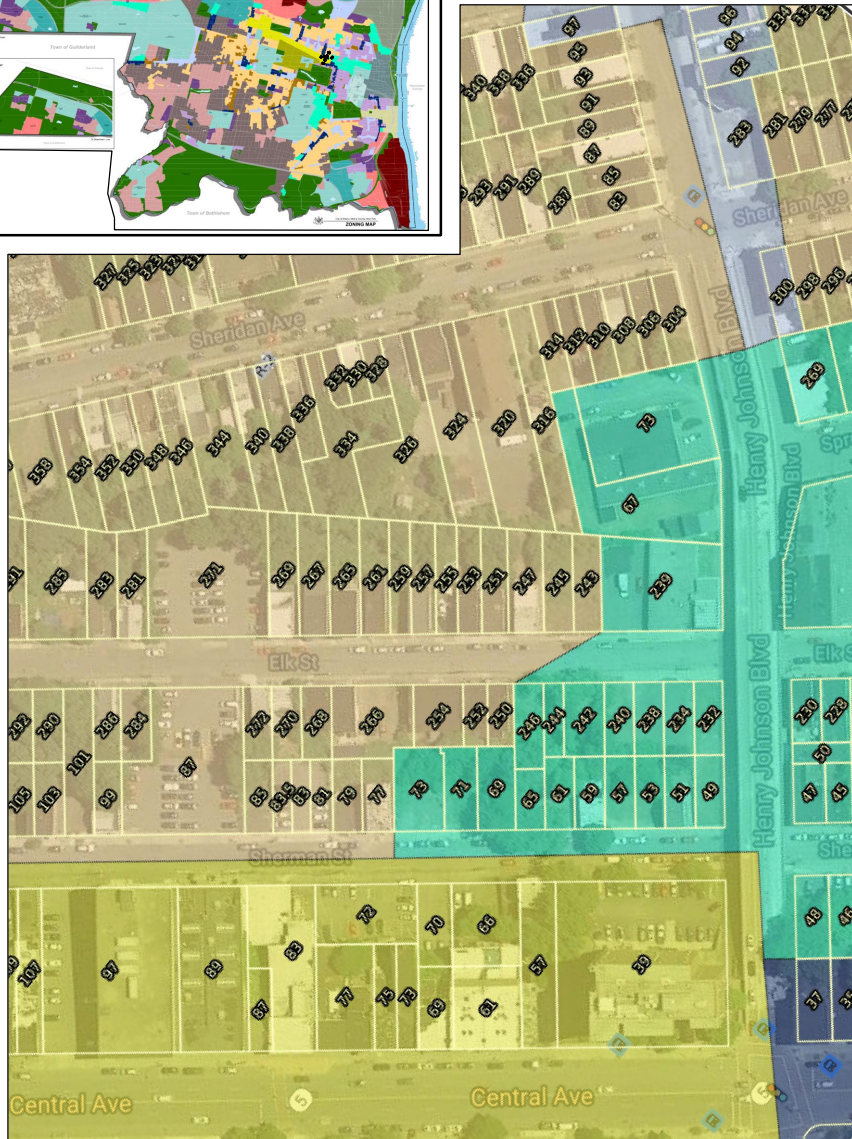
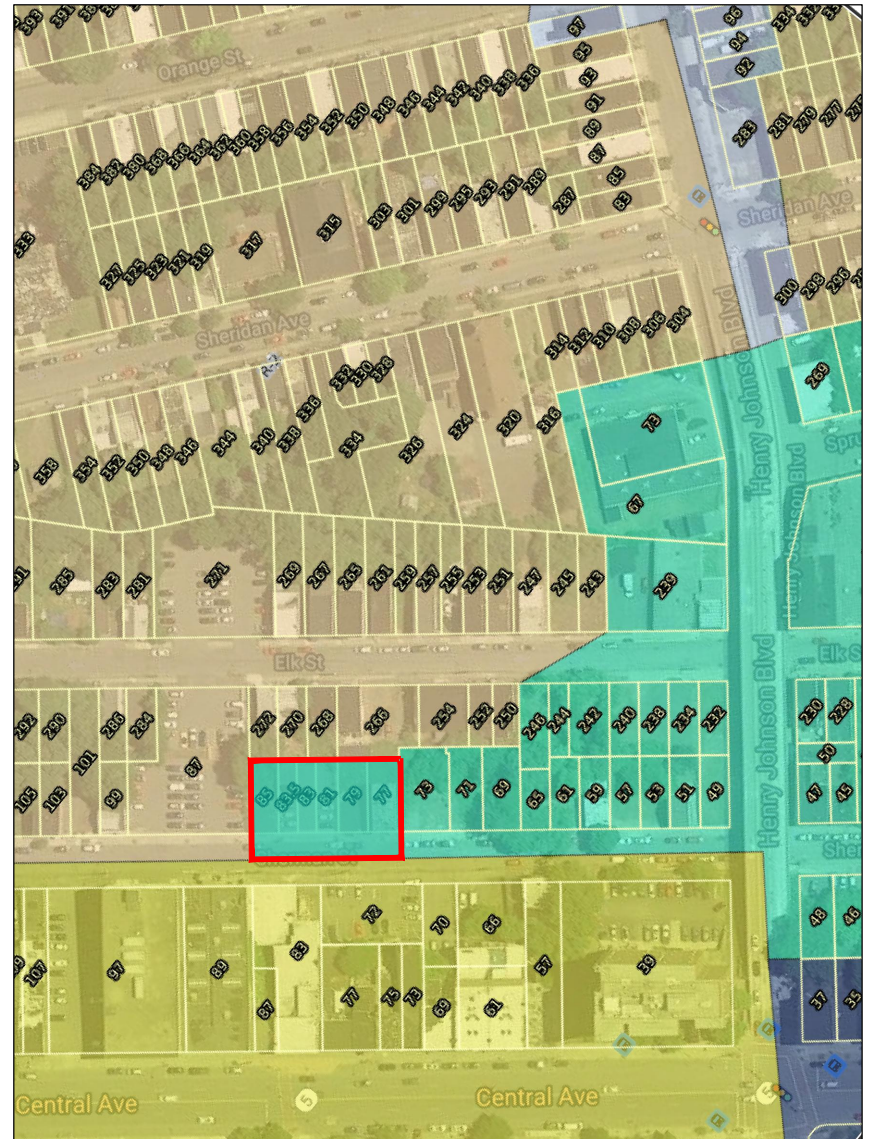


MAP A
EXISTING ZONING



MAP B
PROPOSED ZONING



UNAUTHORIZED ALTERATION OR
ADDITION TO THIS DOCUMENT
IS A VIOLATION OF THE
NYS EDUCATION LAW.
COPYRIGHT LANSING
ENGINEERING, P.C.

- R-2 Residential, Two-Family
- MU-FC Mixed-Use, Form-Based Central Ave
- MU-NE Mixed-Use, Neighborhood Edge
- MU-CU Mixed-Use, Community Urban
- MU-NC Mixed-Use, Neighborhood Center

LEGAL AID SOCIETY PARKING EXPANSION
SHERMAN STREET, CITY OF ALBANY, ALBANY COUNTY, NEW YORK



LANSING
ENGINEERING

2452 STATE ROUTE 9, SUITE 301
MALTA, NY 12020
(518) 899-5243

PROPOSED ZONING CHANGE

PROJ. NO: 890.00
SCALE: 1" = 200'
DATE: 5/5/21

RZM-1
SHEET OF 1