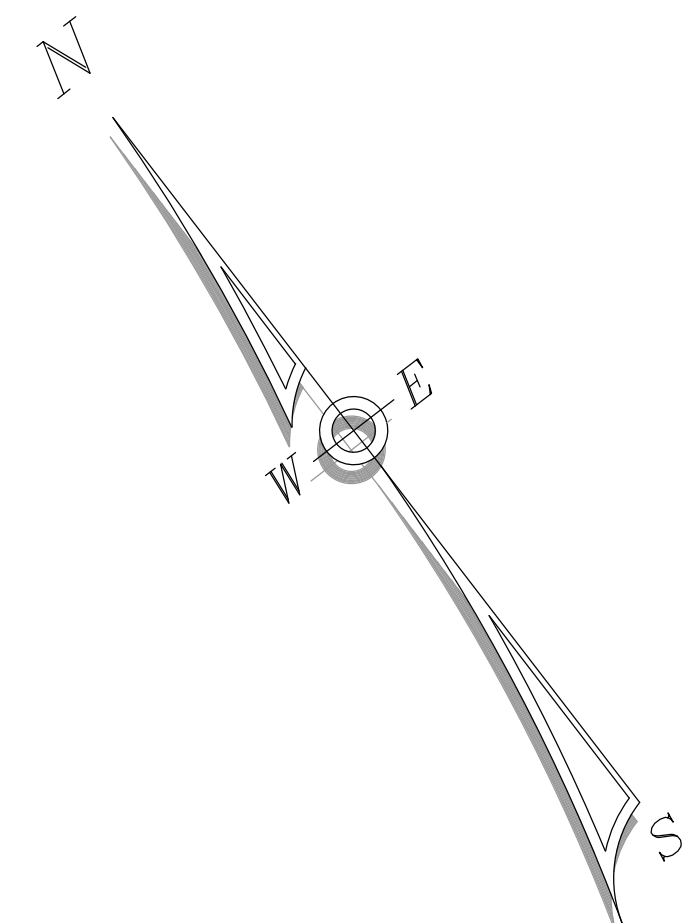


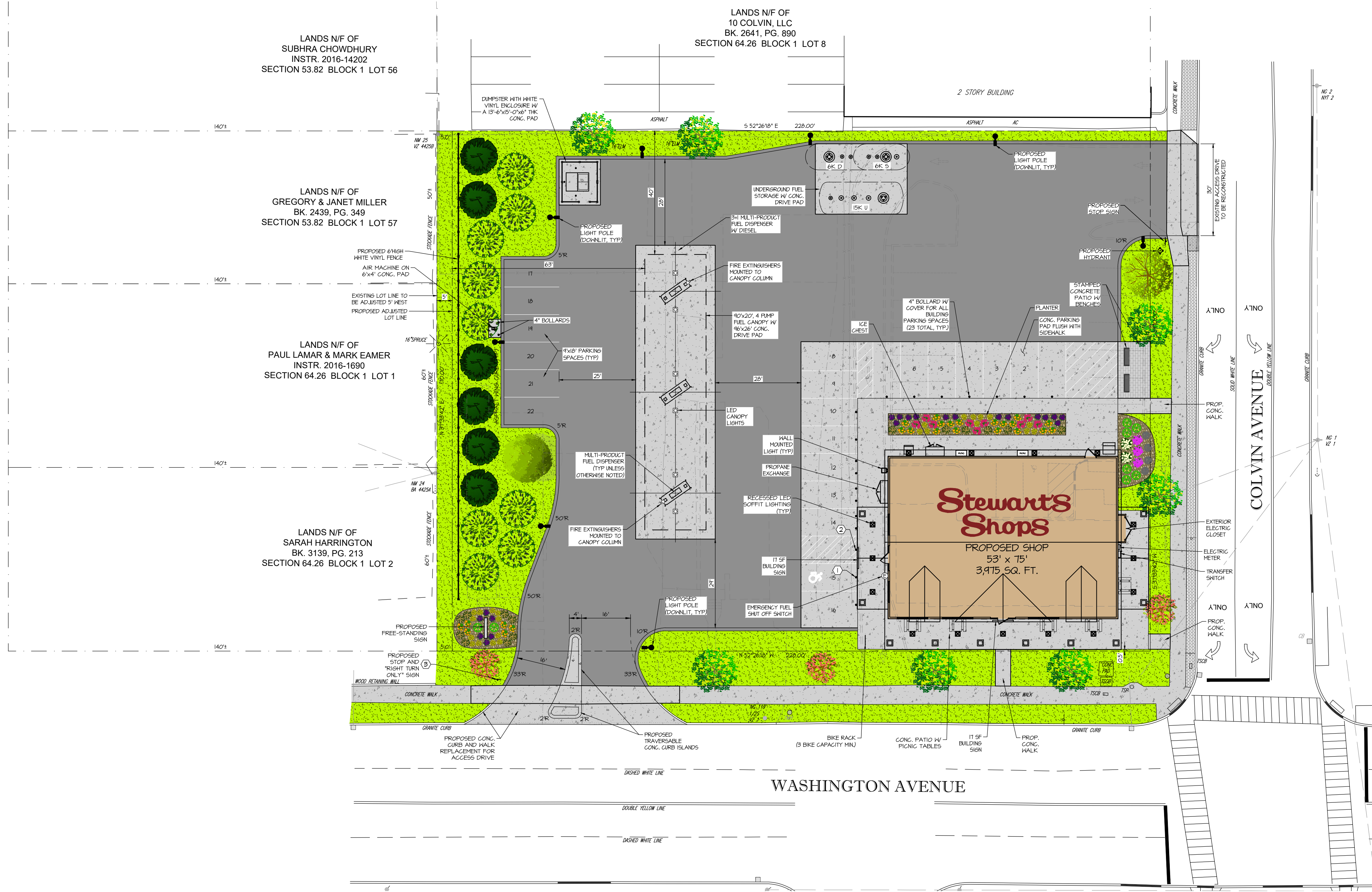


**SITE LOCATION MAP**  
SCALE: N.T.S.

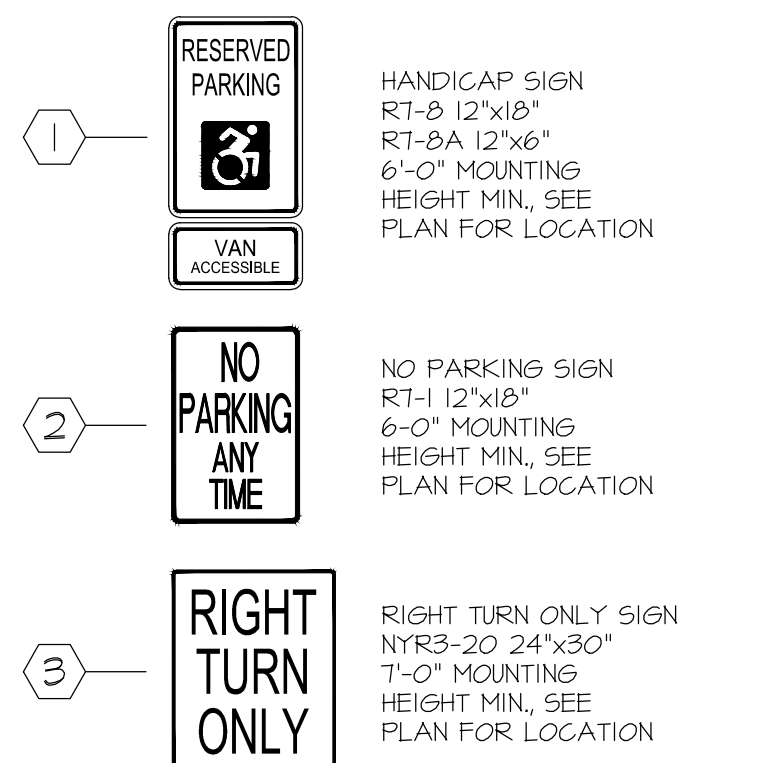


**LEGEND**

PROPERTY LINE	---
FIRE HYDRANT	
WATER VALVE	
GAS VALVE	
SEWER MANHOLE	
SEWER CLEANOUT	
CURB INLET	
CATCH BASIN	
GUY WIRE	
UTILITY POLE	
SIGNPOST	
TRAFFIC SIGNAL CONTROL BOX	
POLE LIGHT	
WELL	
BOLLARD	
IRRIGATION SLEEVE	
OVERHEAD UTILITIES	
WATER SERVICE, 1" TYPE "K" COPPER	
SEWER SERVICE, 4" SDR 26	
STORM PIPE, PROPOSED, HDPE	
STORM PIPE, EXISTING	
STOCKADE FENCE	
CHAINLINK FENCE	
SPLITRAIL FENCE	
U/G ELECTRICAL/TELE SERVICE	
U/G ELECTRICAL CONDUIT	
U/G GAS LINE	
U/G CAMERAL CONDUIT	
DIESEL PRODUCT LINE	
SUPER PRODUCT LINE	
UNLEADED PRODUCT LINE	
EXISTING MAJOR CONTOUR	
EXISTING MINOR CONTOUR	
PROPOSED MAJOR CONTOUR	
PROPOSED MINOR CONTOUR	
PROPOSED SPOT ELEVATION	
EXISTING UNCHANGED SPOT ELEVATION	
NOTES:	
1. SOME FEATURES IN LEGEND MAY NOT HAVE BEEN USED.	
2. DASHED LINES INDICATE NEW WORK.	
3. DOTTED LINES INDICATE REMOVED ITEMS.	



- SIGN KEY:**
- ALL SIGNS ARE TO CONFORM WITH N.Y.S.D.O.T. STANDARD SECTION 645.
  - SIGN POST TO BE SECURED IN BOLLARD WITH SAND
  - SIGNS SHALL BE MOUNTED TO GALVANIZED U CHANNEL POSTS IN THE LOCATIONS INDICATED ON THE PLAN.



CITY OF ALBANY - ALBANY COUNTY  
TAX MAP S.B.L.# 6426-1-345641  
ZONING DISTRICT - MIXED-USE NEIGHBORHOOD CENTER (MU-NC)

VEHICLE FUELING STATION ARE PERMITTED IN THE MU-NC DISTRICT SUBJECT TO A CONDITIONAL USE APPROVAL.

	REQUIRED	PROPOSED
MINIMUM LOT SIZE	N/A	30,760 SQ. FT. (0.94 ACRES)
MINIMUM LOT WIDTH	20 FEET	228 FEET
MAXIMUM LOT COVERAGE	90%	82%
MAXIMUM FRONT SETBACK (COLVIN / EAST)	10 FEET	0.5 FEET
MAXIMUM FRONT SETBACK (WASHINGTON / SOUTH)	10 FEET	0.5 FEET
MINIMUM SIDE SETBACK (WEST)	0 FEET	63 FEET
MINIMUM REAR SETBACK (NORTH)	10 FEET	40 FEET
MAXIMUM BUILDING HEIGHT	3-12 STORIES	1-STORY (21 FEET)
PARKING	1 PER 200 SQ. FT. NET LEASABLE AREA	22 SPACES

**SITE STATISTICS:**

EXISTING SITE USAGE DATA	PROPOSED SITE USAGE DATA
GREENSPACE 14,880 SQ. FT. 30%	GREENSPACE 7,018 SQ. FT. 18%
BUILDING 6,240 SQ. FT. 16%	BUILDING 3,915 SQ. FT. 10%
CONC. / PAVE 19,324 SQ. FT. 46%	CONC. / PAVE 27,767 SQ. FT. 72%

STORE NAME, ABBREVIATION & NO.		COLVIN AVENUE - CLVA - 237	
SITE LOCATION		2 COLVIN AVENUE - ALBANY, NY	
DATE	NO.	REVISIONS	
10/26/20	1	LAYOUT REVISED PER CITY STAFF COMMENTS	
3/12/20	2	REVISED PER CITY COMMENTS	
5/8/20	3	REVISED PER CITY COMMENTS	
7/9/20	4	REVISED PER CITY COMMENTS	
9/2/20	5	SITE # BUILDING REDESIGNED PER CITY COMMENTS	
10/20/20	6	REVISED PER CITY COMMENTS	
DRAWN BY: JR6		SCALE: 1"=20'	
DATE: 12/24/19		DRAWING NO. 5-2	
SARATOGA SPRINGS, NY 12866		TEL: (518)581-1200 FAX: (518)581-1209	
TITLE: PROPOSED SITE PLAN			

ALTERATIONS TO THIS DOCUMENT BY OTHER THAN AN AUTHORIZED LICENSED PROFESSIONAL ENGINEER IS ILLEGAL AND A VIOLATION OF THE NEW YORK STATE EDUCATION LAW