

SIGN A	30" Skechers
Type:	Channel letters w/ remote Power Supplies
Illumination:	Internally Illuminated LED
Square Footage:	84.84 (calculated individually)

SIGN B	30" Skechers
Type:	Channel letters w/ remote Power Supplies
Illumination:	Internally Illuminated LED
Square Footage:	84.84 (calculated individually)

SIGN C	Skechers - Replacement Panel
Type:	3/16" White Polycarbonate Panel with first surface applied Vinyl Graphics
Actual Size:	TBD
Viewable Size:	TBD
Square Footage:	TBD

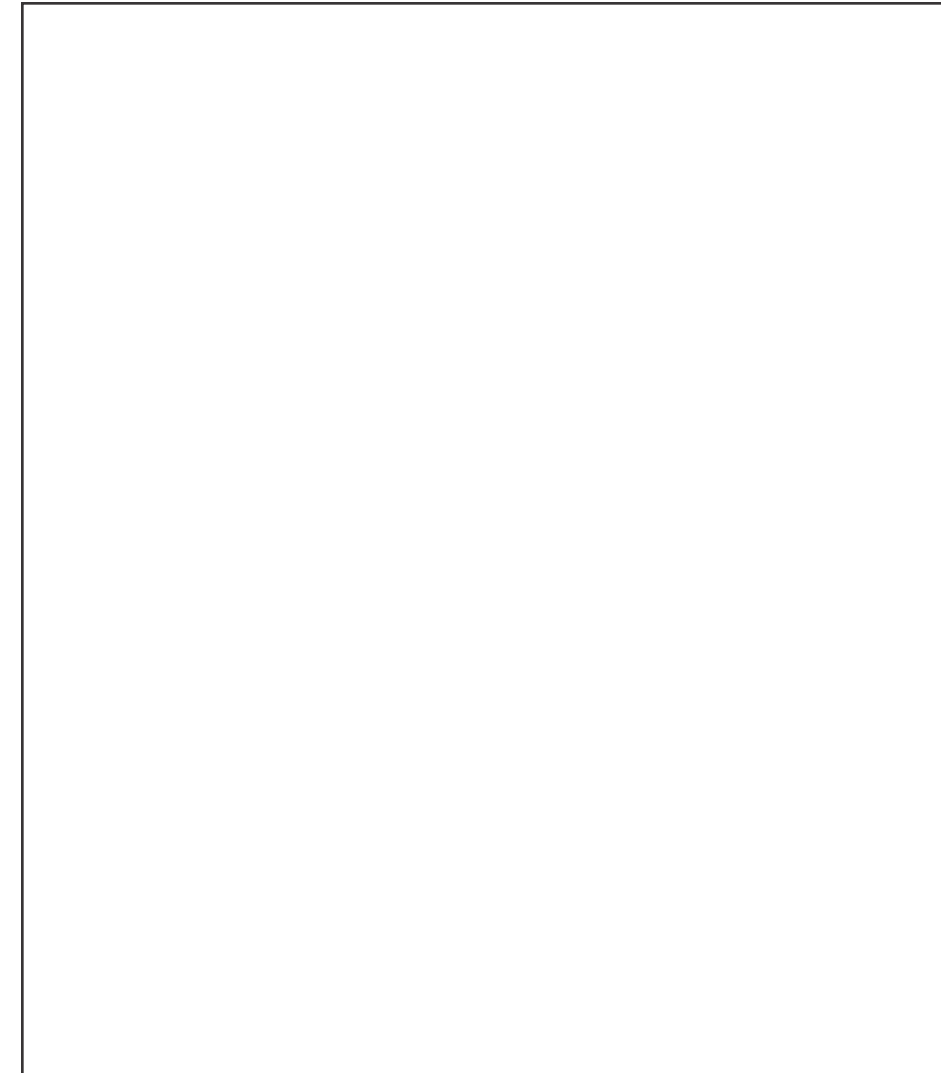


Maximum Sqft.: 32 s. f.

How it's Measured:

Sign area shall be computed by measuring the square or rectangle that will encompass the extreme limits of the writing, graphic representation, emblem, or other display, together with any material or color forming an integral part of the background of the message or display or otherwise used to differentiate the sign from the backdrop or structure against which it is placed, including any supporting framework

Number of signs allowed: 1 per street frontage
Permits are required for the temporary banner



City Code

Landlord Criteria



This rendering is the property of Apex Sign Group. It is for the exclusive use of Apex Sign Group and the party for which it was intended, the requestor. It is an unpublished original drawing not to be distributed, reproduced, or exhibited without the explicit consent of Apex Sign Group. Please contact your account manager for questions regarding this statement.

apexsigngroup.com

Skechers
Crossgates Commons
161 Washington Ave Ext, Spc #204A
Albany, NY 12205

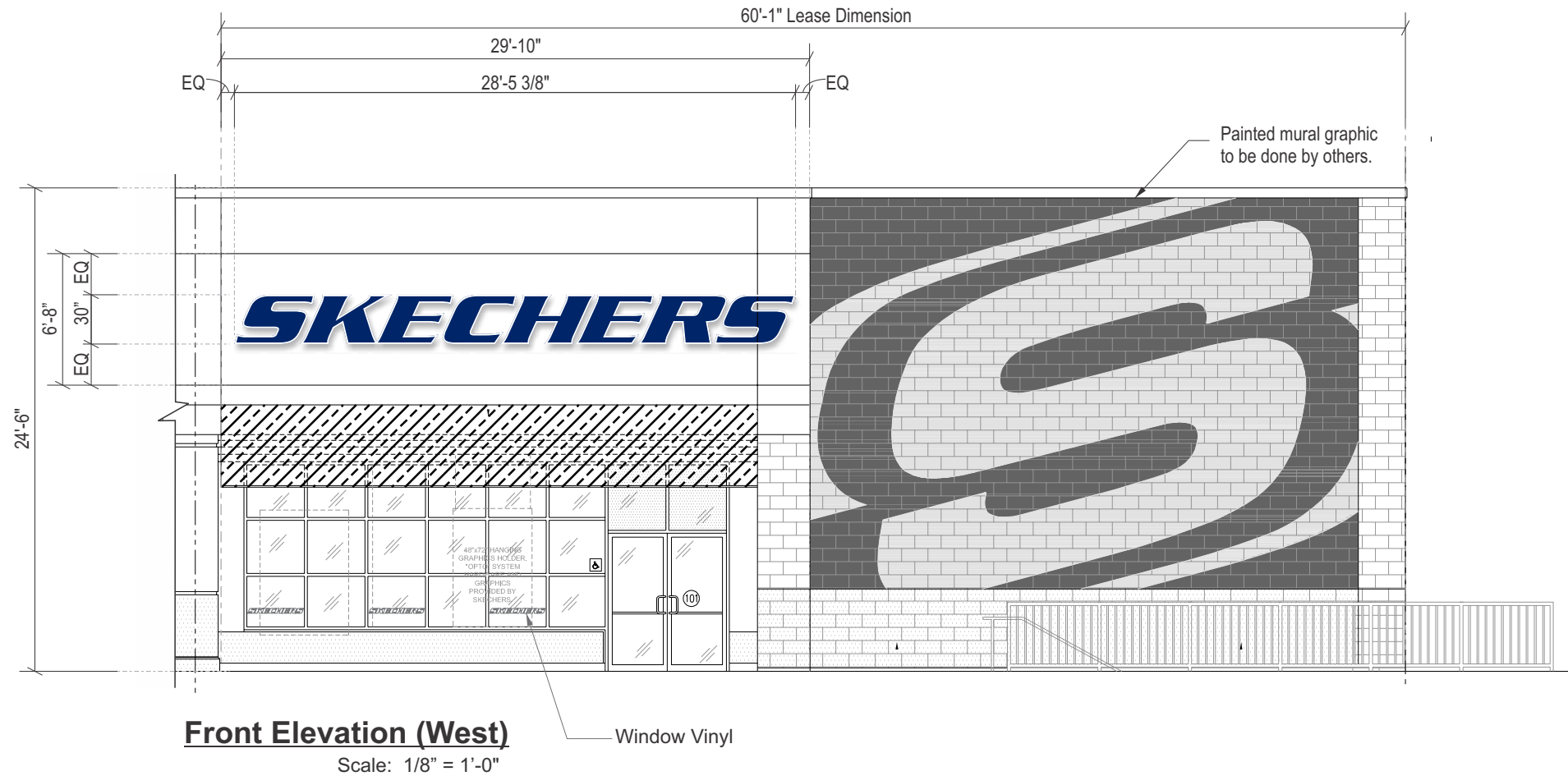
Project ID#: **121841**
Project Mgr: Heather Moore
Designer: Emily Hardy
Created on: 10/17/2019

REVISION

R1	
R2	11/13/19 KF - Calculated square footage as individual letters, adjusted lease line

SIGN A	30" Skechers
Type:	Channel letters w/ remote Power Supplies
Illumination:	Internally Illuminated LED
Square Footage:	84.84 (calculated individually)

Window Vinyl	3" Skechers	
Type:	Applied vinyl	
Illumination:	Non-illuminated	
Square Footage:	.71	QTY (3)



NOTE: DRAWING IS FOR REPRESENTATIONAL PURPOSES ONLY. EXACT DIMENSIONS (FIELD SURVEY) REQUIRED PRIOR TO FABRICATION

Allowable Square Footage this Elevation:	32.00
Formula: Max 32.00	
Actual Square Footage this Elevation:	84.84



This rendering is the property of Apex Sign Group. It is for the exclusive use of Apex Sign Group and the party for which it was intended. It is an unpublished original drawing not to be distributed, reproduced, or exhibited without the explicit consent of Apex Sign Group. Please contact your account manager for questions regarding this statement.
apexsigngroup.com

Skechers
Crossgates Commons
161 Washington Ave Ext, Spc #204A
Albany, NY 12205

Project ID#: 121841
Project Mgr: Heather Moore
Designer: Emily Hardy
Created on: 10/17/2019

REVISION	R1
	R2 11/13/19 KF - Calculated square footage as individual letters, adjusted lease line

SIGN B	30" Skechers
Type:	Channel letters w/ remote Power Supplies
Illumination:	Internally Illuminated LED
Square Footage:	84.84 (calculated individually)



Side Elevation (South)

Scale: 1/8" = 1'-0"

NOTE: DRAWING IS FOR REPRESENTATIONAL PURPOSES ONLY. EXACT DIMENSIONS (FIELD SURVEY) REQUIRED PRIOR TO FABRICATION

Allowable Square Footage this Elevation:	32.00
Formula: Max 32.00	
Actual Square Footage this Elevation:	84.84



This rendering is the property of Apex Sign Group. It is for the exclusive use of Apex Sign Group and the party for which it was intended. It is an unpublished original drawing not to be distributed, reproduced, or exhibited without the explicit consent of Apex Sign Group. Please contact your account manager for questions regarding this statement.

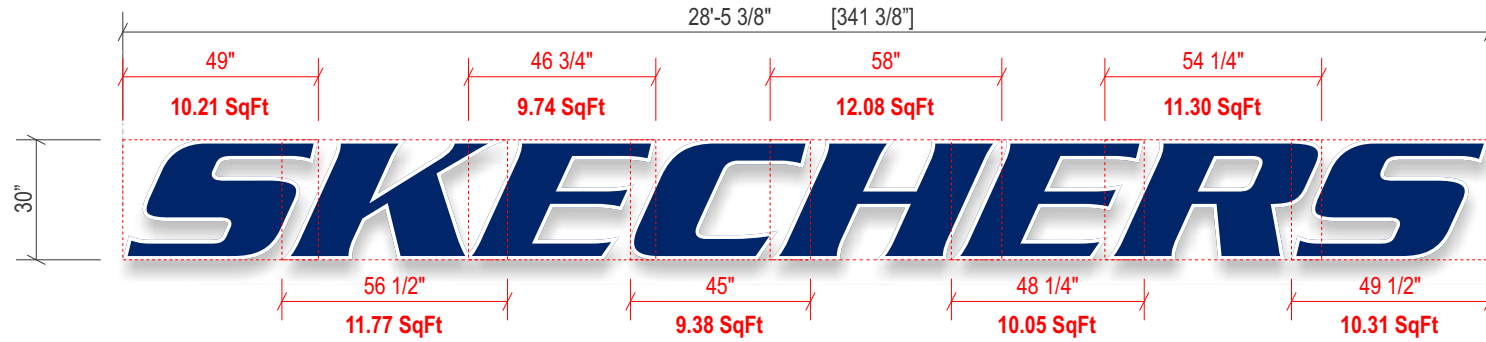
apexsigngroup.com

Skechers
 Crossgates Commons
 161 Washington Ave Ext, Spc #204A
 Albany, NY 12205

Project ID#: 121841
 Project Mgr: Heather Moore
 Designer: Emily Hardy
 Created on: 10/17/2019

REVISION	R1
	R2 11/13/19 KF - Calculated square footage as individual letters, adjusted lease line

SIGN A	30" Skechers
Type:	Channel letters w/ remote Power Supplies
Illumination:	Internally Illuminated LED
Square Footage:	84.84 (calculated individually)



Sign Layout Detail

SK-CL-30-B

15/16" vinyl border

Scale: 1/4" = 1'-0"

A (in)	B (Ft in)	B (in)	Border	Total SQ FT
12	11' - 4 1/2"	136 1/2	3/8"	11.38
14	13' - 3 3/8"	159 3/8	7/16"	15.49
16	15' - 2 1/8"	182 1/8	1/2"	20.24
18	17' - 0 7/8"	204 7/8	9/16"	25.61
24	22' - 9 1/8"	273 1/8	3/4"	45.52
30	28' - 5 3/8"	341 3/8	15/16"	71.12
36	34' - 1 3/4"	409 3/4	1 1/8"	102.44
48	45' - 6 1/4"	546 1/4	1 1/2"	182.08

3M#3630-137 European Blue

Electrical Detail:

- White LED's (Principal)
- (2) 60w Power Supplies
- Total Amps: 1.70
- (1) 20 amp 120V Circuit Req.



Specifications: Channel Letters

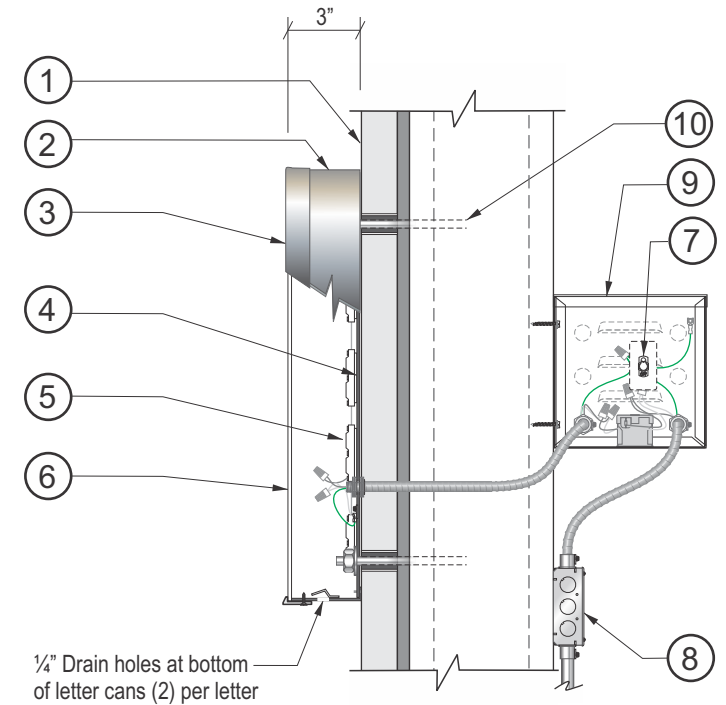
Note: All trim caps to be spliced at top of letters

- Existing Facade: To be determined (Varies per location)
- .040 Aluminum letter returns pre-finished "Brushed Aluminum"
- 1" Jewelite trimcap "Brushed Chrome". Bonded to face, #6 Sheet metal screws to returns
- 0.063" aluminum backs fastened to returns. Seal w/ VOC compliant 360 white latex caulk to prevent moisture penetration. (interior of sign can painted white for maximum illumination)
- White LED's (Principal)
- 3/16" White #7328 Acrylic faces with 3M #3630-137 "European Blue" vinyl overlay. vinyl to be inset, leaving white border
- Disconnect switch UL Outdoor rated toggle type w/ neoprene boot per NEC 600-6
- Primary electrical feed in UL conduit / customer supplied UL junction box
- Power Supplies within UL enclosure (removable lid), 1/4" x 1" min screws
- Mounting Hardware to suit

General Notes:

This sign is to be installed in accordance with the requirements of Article 600 of the National Electrical Code.

- Grounded and bonded per NEC 600.7/NEC 250
- Existing branch circuit in compliance with NEC 600.5, not to exceed 20 amps
- Sign is to be UL listed per NEC 600.3
- UL disconnect switch per NEC 600.6- required per sign component before leaving manufacturer. For multiple signs, a disconnect is permitted but not required for each section
- The location of the disconnect switch after installation shall comply with article 600.6 (A) (1) per NEC



Section @ LED Channel Letter
Front-Lit (Remote) Scale: N.T.S.



This rendering is the property of Apex Sign Group. It is for the exclusive use of Apex Sign Group and the party for which it was intended. The requestor. It is an unpublished original drawing not to be distributed, reproduced, or exhibited without the explicit consent of Apex Sign Group. Please contact your account manager for questions regarding this statement.

apexsigngroup.com

Skechers

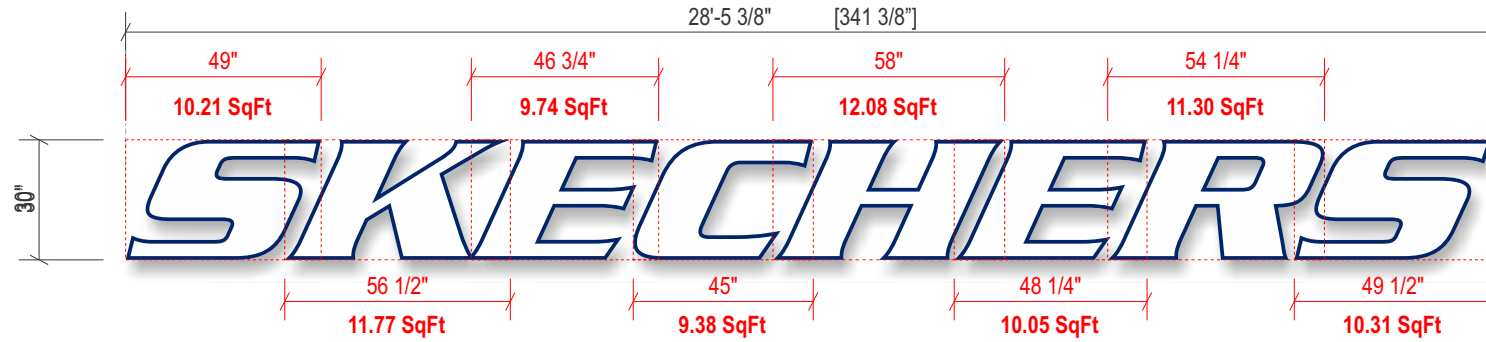
Crossgates Commons
 161 Washington Ave Ext, Spc #204A
 Albany, NY 12205

Project ID#: 121841
 Project Mgr: Heather Moore
 Designer: Emily Hardy
 Created on: 10/17/2019

REVISION

R1
 R2 11/13/19 KF - Calculated square footage as individual letters, adjusted lease line

SIGN B	30" Skechers
Type:	Channel letters w/ remote Power Supplies
Illumination:	Internally Illuminated LED
Square Footage:	84.84 (calculated individually)



Sign Layout Detail
Scale: 1/4" = 1'-0"

SK-CL-30-W 15/16" vinyl border

A (in)	B (Ft in)	B (in)	Border	Total SQ FT
12	11' - 4 1/2"	136 1/2	3/8"	11.38
14	13' - 3 3/8"	159 3/8	7/16"	15.49
16	15' - 2 1/8"	182 1/8	1/2"	20.24
18	17' - 0 7/8"	204 7/8	9/16"	25.61
24	22' - 9 1/8"	273 1/8	3/4"	45.52
30	28' - 5 3/8"	341 3/8	15/16"	71.12
36	34' - 1 3/4"	409 3/4	1 1/8"	102.44
48	45' - 6 1/4"	546 1/4	1 1/2"	182.08

3M#3630-137 European Blue

Electrical Detail:

- White LED's (Principal)
- (2) 60w Power Supplies
- Total Amps: 1.70
- (1) 20 amp 120V Circuit Req.



Specifications: Channel Letters

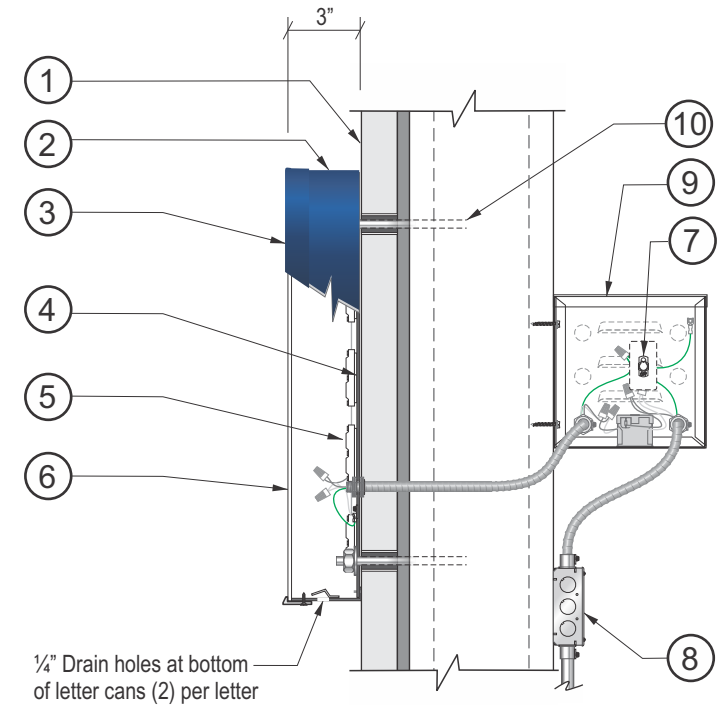
Note: All trim caps to be spliced at top of letters

- Existing Facade: To be determined (Varies per location)
- .040 Aluminum letter returns pre-finished "Heron Blue"
- 1" Jewelite trimcap (Solid Blue) bonded to face, #6 Sheet metal screws to returns (PTM trimcaps)
- 0.063" aluminum backs fastened to returns. Seal w/ VOC compliant 360 white latex caulk to prevent moisture penetration. (interior of sign can painted white for maximum illumination)
- White LED's (Principal)
- 3/16" White #7328 Acrylic faces with 3M #3630-137 "European Blue" vinyl border.
- Disconnect switch UL Outdoor rated toggle type w/ neoprene boot per NEC 600-6
- Primary electrical feed in UL conduit / customer supplied UL junction box
- Power Supplies within UL enclosure (removable lid), 1/4" x 1" min screws
- Mounting Hardware to suit

General Notes:

This sign is to be installed in accordance with the requirements of Article 600 of the National Electrical Code.

- Grounded and bonded per NEC 600.7/NEC 250
- Existing branch circuit in compliance with NEC 600.5, not to exceed 20 amps
- Sign is to be UL listed per NEC 600.3
- UL disconnect switch per NEC 600.6- required per sign component before leaving manufacturer. For multiple signs, a disconnect is permitted but not required for each section
- The location of the disconnect switch after installation shall comply with article 600.6 (A) (1) per NEC



Section @ LED Channel Letter
Front-Lit (Remote) Scale: N.T.S.



This rendering is the property of Apex Sign Group. It is for the exclusive use of Apex Sign Group and the party for which it was intended. It is an unpublished original drawing not to be distributed, reproduced, or exhibited without the explicit consent of Apex Sign Group. Please contact your account manager for questions regarding this statement.

apexsigngroup.com

Skechers

Crossgates Commons
161 Washington Ave Ext, Spc #204A
Albany, NY 12205

Project ID#: 121841
Project Mgr: Heather Moore
Designer: Emily Hardy
Created on: 10/17/2019

REVISION

R1
R2 11/13/19 KF - Calculated square footage as individual letters, adjusted lease line

SIGN C	Skechers - Replacement Panel
Type:	3/16" White Polycarbonate Panel with first surface applied Vinyl Graphics
Actual Size:	TBD
Viewable Size:	TBD
Square Footage:	TBD

NOTE: DRAWING IS FOR REPRESENTATIONAL PURPOSES ONLY. EXACT DIMENSIONS (FIELD SURVEY) REQUIRED PRIOR TO FABRICATION



New Replacement Panel - Existing D/F Monument

QTY 2 (1 SET)

Scale: 3/4" = 1'-0"

Specifications:

1. New 3/16" white polycarbonate
2. First surface applied 3M #3630-137 European Blue vinyl.
3. Existing Retainer (Visual Opening)



This rendering is the property of Apex Sign Group. It is for the exclusive use of Apex Sign Group and the party for which it was intended, the requestor. It is an unpublished original drawing not to be distributed, reproduced, or exhibited without the explicit consent of Apex Sign Group. Please contact your account manager for questions regarding this statement.

apexsigngroup.com

Skechers
 Crossgates Commons
 161 Washington Ave Ext, Spc #204A
 Albany, NY 12205

Project ID#: **121841**
 Project Mgr: Heather Moore
 Designer: Emily Hardy
 Created on: 10/17/2019

REVISION

R1	
R2	11/13/19 KF - Calculated square footage as individual letters, adjusted lease line

Window Vinyl	3" Skechers	
Type:	Applied vinyl	
Illumination:	Non-illuminated	
Square Footage:	.71	QTY (3)



Window Vinyl Detail

QTY (3) Scale: 1 1/2" = 1'-0"

SK-VYL

Specifications: Vinyl

Second surface applied 3M 7725-10 opaque white vinyl.
Applied 30" A.F.F on every other window.



This rendering is the property of Apex Sign Group. It is for the exclusive use of Apex Sign Group and the party for which it was intended, the requestor. It is an unpublished original drawing not to be distributed, reproduced, or exhibited without the explicit consent of Apex Sign Group. Please contact your account manager for questions regarding this statement.

apexsigngroup.com

Skechers
Crossgates Commons
161 Washington Ave Ext, Spc #204A
Albany, NY 12205

Project ID#: **121841**
Project Mgr: Heather Moore
Designer: Emily Hardy
Created on: 10/17/2019

REVISION

R1	
R2	11/13/19 KF - Calculated square footage as individual letters, adjusted lease line

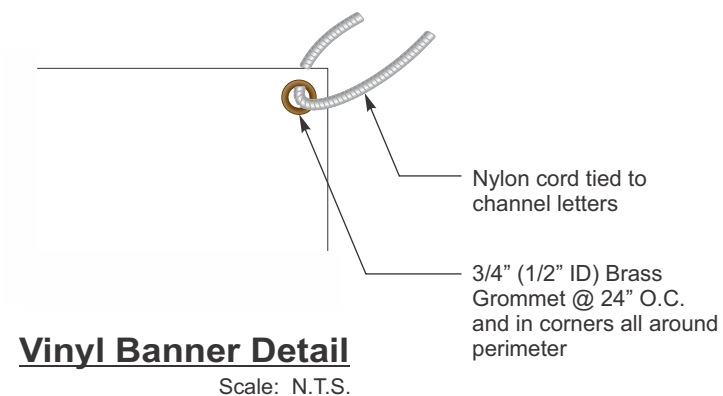
Banner	Skechers COMING SOON
Type:	Exterior Banner
Size:	52" x 216"
Square Footage:	78.00



Side A



Side B



Exterior D/F Banner Layout Detail

Scale: 3/8" = 1'-0"

White vinyl banner material with hem. Banner background to be digitally printed to match PMS#200c Red. White copy is banner substrate material. Grommetted and hemmed around perimeter

SK-BN-CS/NO



This rendering is the property of Apex Sign Group. It is for the exclusive use of Apex Sign Group and the party for which it was intended. The requester. It is an unpublished original drawing not to be distributed, reproduced, or exhibited without the explicit consent of Apex Sign Group. Please contact your account manager for questions regarding this statement.

apexsigngroup.com

Skechers
Crossgates Commons
161 Washington Ave Ext, Spc #204A
Albany, NY 12205

Project ID#: **121841**
Project Mgr: Heather Moore
Designer: Emily Hardy
Created on: 10/17/2019

REVISION	R1
	R2 11/13/19 KF - Calculated square footage as individual letters, adjusted lease line

Interior A	9" Skechers
Type:	S/F Cabinet w/ Push Thru copy
Illumination:	Internally Illuminated LED
Square Footage:	10.64

Interior B	Skechers - MENS
Type:	Suspended D/F Sign
Illumination:	Internally Illuminated ONE SIDE ONLY
Square Footage:	10.33

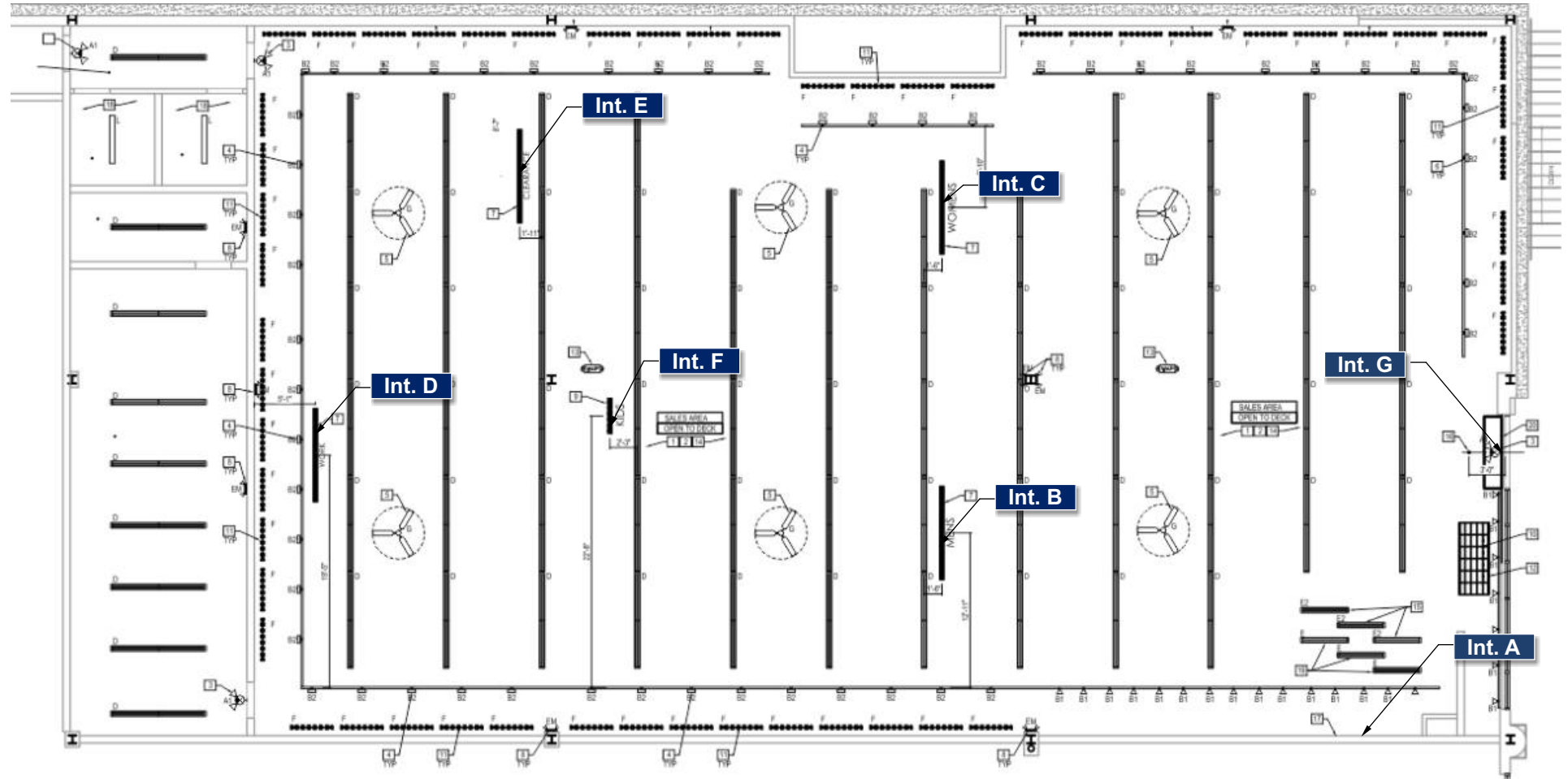
Interior C	Skechers - WOMENS
Type:	Suspended D/F Sign
Illumination:	Internally Illuminated ONE SIDE ONLY
Square Footage:	10.33

Interior D	Skechers - WORK
Type:	Suspended D/F Sign
Illumination:	Internally Illuminated ONE SIDE ONLY
Square Footage:	10.33

Interior E	Skechers - CLEARANCE
Type:	Suspended D/F Sign
Illumination:	Internally Illuminated ONE SIDE ONLY
Square Footage:	10.33

Interior F	36" Skechers Kids Puck Sign
Type:	Suspended D/F Sign
Illumination:	Internally Illuminated ONE SIDE ONLY
Square Footage:	7.07

Interior G	Skechers
Type:	S/F THANK YOU Suspended Sign
Illumination:	Non-illuminated
Square Footage:	5.31



Interior Site Plan

Scale: N.T.S.



This rendering is the property of Apex Sign Group. It is for the exclusive use of Apex Sign Group and the party for which it was intended; the requestor. It is an unpublished original drawing not to be distributed, reproduced, or exhibited without the explicit consent of Apex Sign Group. Please contact your account manager for questions regarding this statement.

apexsigngroup.com

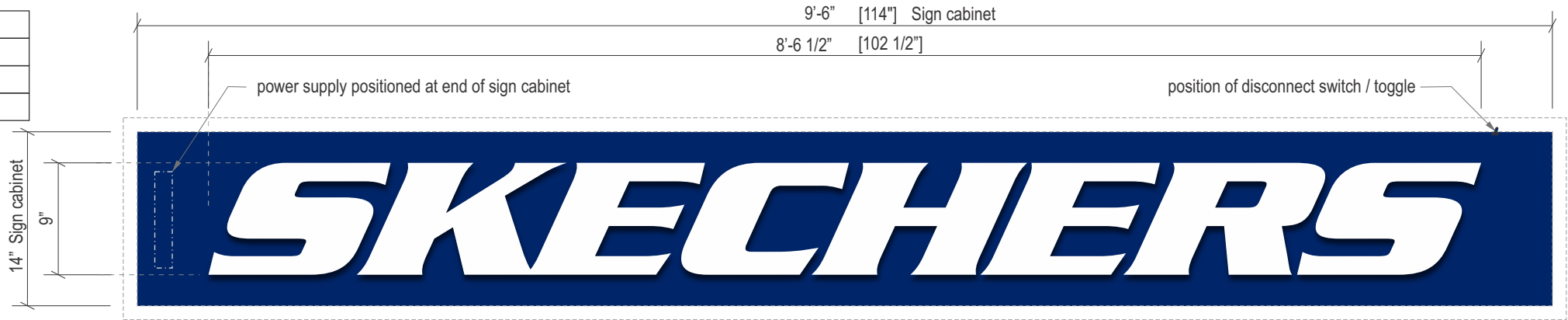
Skechers
 Crossgates Commons
 161 Washington Ave Ext, Spc #204A
 Albany, NY 12205

Project ID#: 121841
 Project Mgr: Heather Moore
 Designer: Emily Hardy
 Created on: 10/17/2019

REVISION

R1
 R2 11/13/19 KF - Calculated square footage as individual letters, adjusted lease line

Interior A	9" Skechers
Type:	S/F Cabinet w/ Push Thru copy
Illumination:	Internally Illuminated LED
Square Footage:	10.64



Sign Layout Detail **SK-CASHWRAP-W cabinet**
Scale: 1" = 1'-0"

Sign cabinet will be installed to existing wall, then cashwrap framing (by others) will surround. This cashwrap framing is removable for access and servicing of the sign cabinet

Note: Revised on 01/16/19 to enlarge cabinet per dimensions provided by client (removing the 1/4" tolerance gap between cabinet and display frame per OPTO display fixture drawing SKX_466_BW - 1.10 and per Signage Solutions drawing 180804-06)

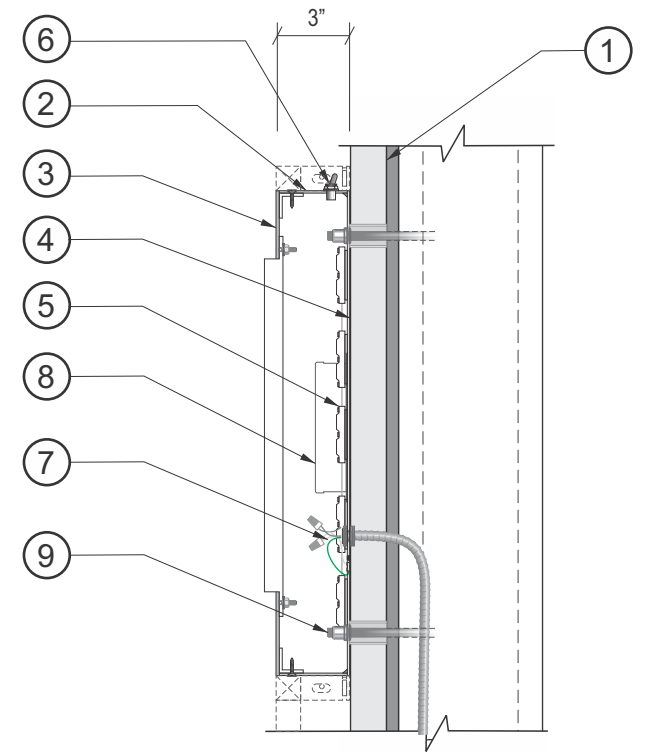
Electrical Detail:

- White LED's (Principal)
- (1) 60w Power Supplies
- Total Amps: 0.85
- (1) 20 amp 120V Circuit Req.



Specifications: Cabinet Sign for Cashwrap

- Existing Facade: TBD
- 0.090" returns painted SW #6524 'Commodore Blue'
- 0.125" Aluminum w/ routed out faces painted SW #6524 'Commodore Blue' w/ 3/4" clear acrylic push-thru copy (flame polished edges), second surface 3M #3635-70 diffuser film
- 0.125" aluminum back pre-finished white
- White LED's (Principal)
- Disconnect switch UL Outdoor rated toggle type w/ neoprene boot per NEC 600-6 (verify placement)
- Primary electrical feed in UL conduit / customer supplied UL junction box
- Power Supplies within UL enclosure (removable lid), 1/4" x 1" min screws
- Mounting hardware to suit



Section @ Cabinet
Scale: N.T.S.

General Notes:

This sign is to be installed in accordance with the requirements of Article 600 of the National Electrical Code.

- Grounded and bonded per NEC 600.7/NEC 250
- Existing branch circuit in compliance with NEC 600.5, not to exceed 20 amps
- Sign is to be UL listed per NEC 600.3
- UL disconnect switch per NEC 600.6- required per sign component before leaving manufacturer. For multiple signs, a disconnect is permitted but not required for each section
- The location of the disconnect switch after installation shall comply with article 600.6 (A) (1) per NEC



This rendering is the property of Apex Sign Group. It is for the exclusive use of Apex Sign Group and the party for which it was intended. The requestor. It is an unpublished original drawing not to be distributed, reproduced, or exhibited without the explicit consent of Apex Sign Group. Please contact your account manager for questions regarding this statement.

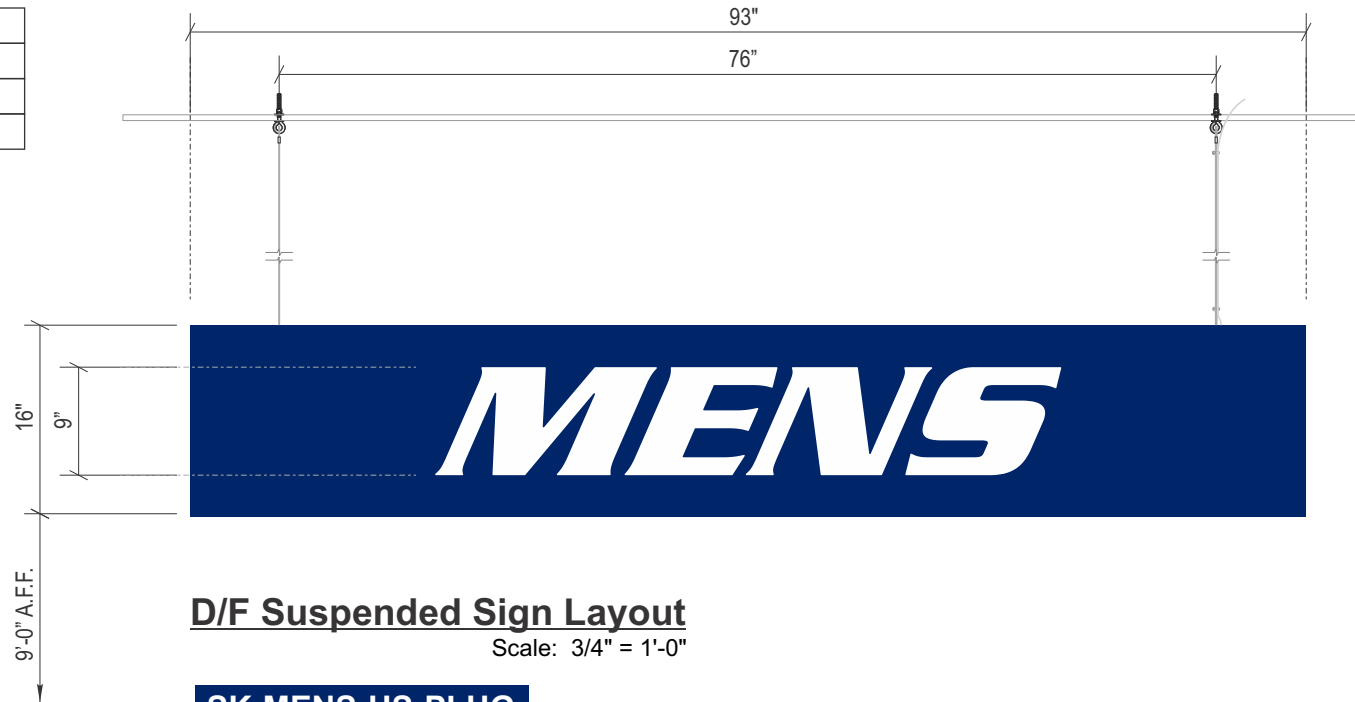
apexsigngroup.com

Skechers
Crossgates Commons
161 Washington Ave Ext, Spc #204A
Albany, NY 12205

Project ID#: 121841
Project Mgr: Heather Moore
Designer: Emily Hardy
Created on: 10/17/2019

REVISION	R1
	R2 11/13/19 KF - Calculated square footage as individual letters, adjusted lease line

Interior B	Skechers - MENS
Type:	Suspended D/F Sign
Illumination:	Internally Illuminated ONE SIDE ONLY
Square Footage:	10.33



D/F Suspended Sign Layout

Scale: 3/4" = 1'-0"

SK-MENS-HS-PLUG

Color Specifications:

■ SW-6524 Commodore Blue/Satin Finish

Electrical Detail:

- White LED's (Principal)
- (1) 60w Power Supplies
- Total Amps: 0.85
- (1) 20 amp 120V Circuit Req.



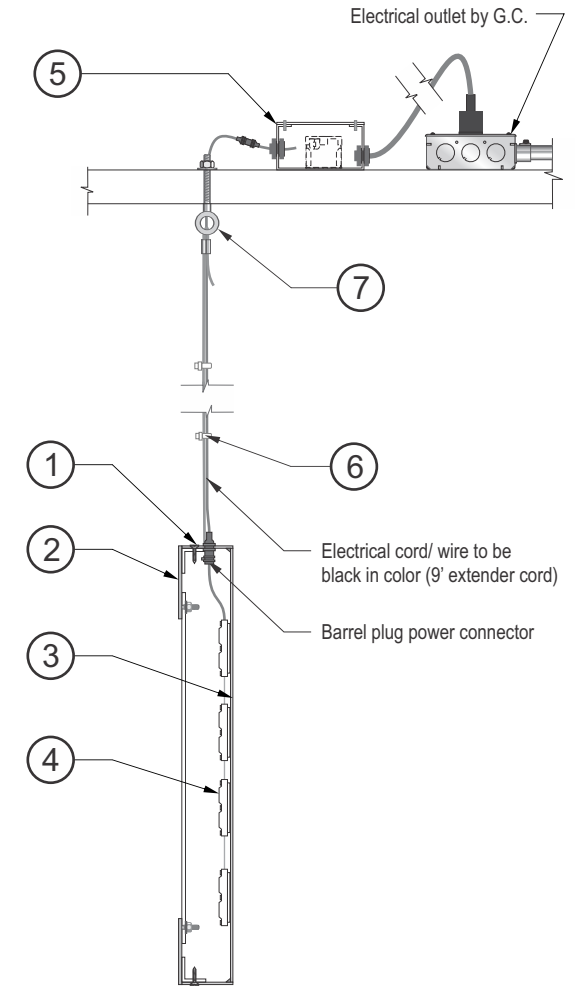
General Notes:

This sign is to be installed in accordance with the requirements of Article 600 of the National Electrical Code.

- Grounded and bonded per NEC 600.7/NEC 250
- Existing branch circuit in compliance with NEC 600.5, not to exceed 20 amps
- Sign is to be UL listed per NEC 600.3
- UL disconnect switch per NEC 600.6- required per sign component before leaving manufacturer. For multiple signs, a disconnect is permitted but not required for each section
- The location of the disconnect switch after installation shall comply with article 600.6 (A) (1) per NEC

Specifications: Suspended sign (Open Ceiling)

- 2" x 0.080" Aluminum returns painted to match: SW-6524 Commodore Blue/Satin Finish
- 0.080" Routed aluminum face painted to match SW-6524 Commodore Blue/Satin Finish:
MENS: to be routed from face with white acrylic backer. 1/4-20 welded stud attachment
 Face mounted w/ #6 counter sunk screws into 1/2" x 1/2" x 1/8" aluminum angle thru return
- 0.080 Aluminum back PTM SW-6524 Commodore Blue/Satin Finish & applied
 White vinyl matching front face design.
- White LED's (Principal)
- Principal PL-PS-60W-DT indoor power supply within metal enclosure (painted black). 5' power cord (black)
- Low voltage wiring w/ clear zip ties to keep taugth (electrical cord/ wire to be black in color)
- 3/16" Eyebolts & 1/8" cable in 4' length w/ #1 Die cast end stop at cabinet



Section @ Suspended Sign

SCALE: N.T.S.



This rendering is the property of Apex Sign Group. It is for the exclusive use of Apex Sign Group and the party for which it was intended. It is an unpublished original drawing not to be distributed, reproduced, or exhibited without the explicit consent of Apex Sign Group. Please contact your account manager for questions regarding this statement.

apexsigngroup.com

Skechers

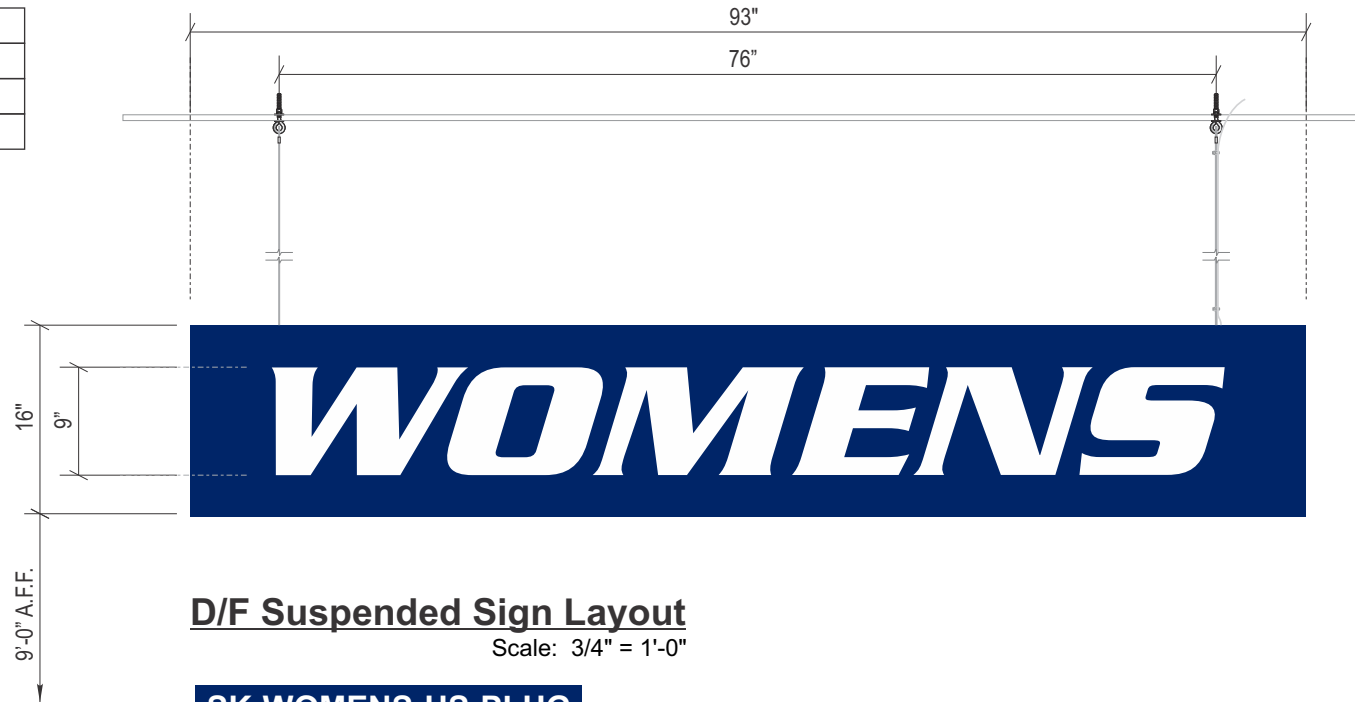
Crossgates Commons
 161 Washington Ave Ext, Spc #204A
 Albany, NY 12205

Project ID#: 121841
 Project Mgr: Heather Moore
 Designer: Emily Hardy
 Created on: 10/17/2019

REVISION

R1	
R2	11/13/19 KF - Calculated square footage as individual letters, adjusted lease line

Interior C	Skechers - WOMENS
Type:	Suspended D/F Sign
Illumination:	Internally Illuminated ONE SIDE ONLY
Square Footage:	10.33



Color Specifications:

■ SW-6524 Commodore Blue/Satin Finish

Electrical Detail:

- White LED's (Principal)
- (1) 60w Power Supplies
- Total Amps: 0.85
- (1) 20 amp 120V Circuit Req.



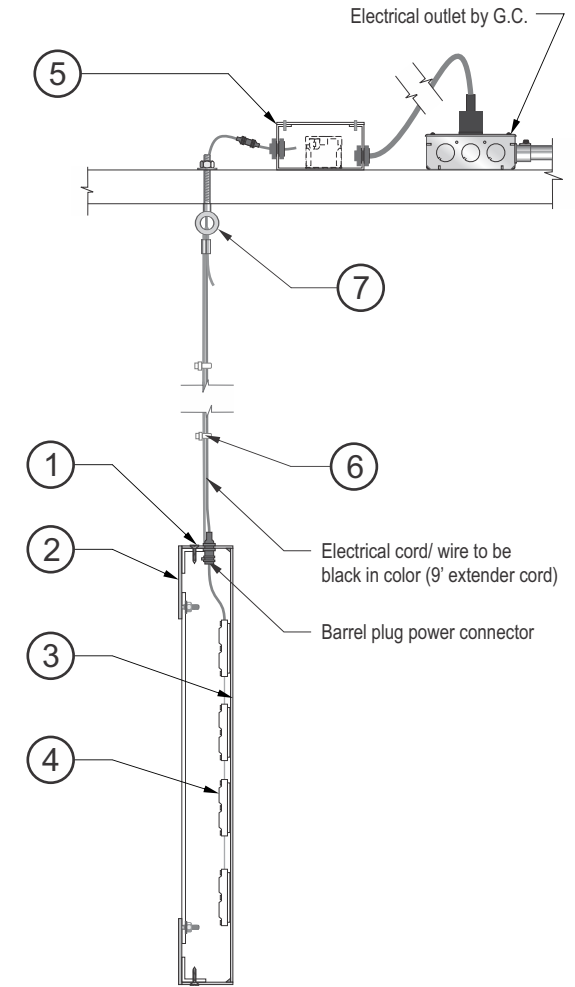
General Notes:

This sign is to be installed in accordance with the requirements of Article 600 of the National Electrical Code.

- Grounded and bonded per NEC 600.7/NEC 250
- Existing branch circuit in compliance with NEC 600.5, not to exceed 20 amps
- Sign is to be UL listed per NEC 600.3
- UL disconnect switch per NEC 600.6- required per sign component before leaving manufacturer. For multiple signs, a disconnect is permitted but not required for each section
- The location of the disconnect switch after installation shall comply with article 600.6 (A) (1) per NEC

Specifications: Suspended sign (Open Ceiling)

- 2" x 0.080" Aluminum returns painted to match: SW-6524 Commodore Blue/Satin Finish
- 0.080" Routed aluminum face painted to match SW-6524 Commodore Blue/Satin Finish:
MENS: to be routed from face with white acrylic backer. 1/4-20 welded stud attachment
 Face mounted w/ #6 counter sunk screws into 1/2" x 1/2" x 1/8" aluminum angle thru return
- 0.080 Aluminum back PTM SW-6524 Commodore Blue/Satin Finish & applied
 White vinyl matching front face design.
- White LED's (Principal)
- Principal PL-PS-60W-DT indoor power supply within metal enclosure (painted black). 5' power cord (black)
- Low voltage wiring w/ clear zip ties to keep taugth (electrical cord/ wire to be black in color)
- 3/16" Eyebolts & 1/8" cable in 4' length w/ #1 Die cast end stop at cabinet



Section @ Suspended Sign

SCALE: N.T.S.



This rendering is the property of Apex Sign Group. It is for the exclusive use of Apex Sign Group and the party for which it was intended. It is an unpublished original drawing not to be distributed, reproduced, or exhibited without the explicit consent of Apex Sign Group. Please contact your account manager for questions regarding this statement.

apexsigngroup.com

Skechers

Crossgates Commons
 161 Washington Ave Ext, Spc #204A
 Albany, NY 12205

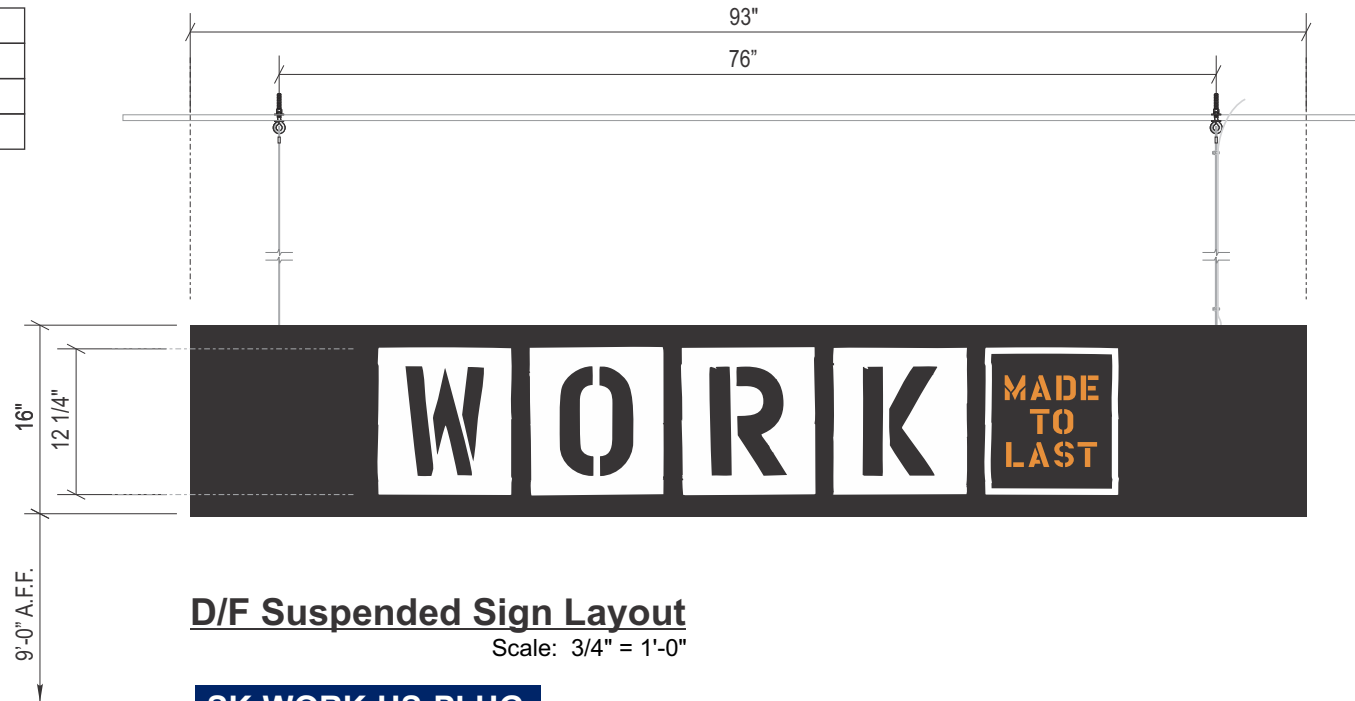
Project ID#: 121841
 Project Mgr: Heather Moore
 Designer: Emily Hardy
 Created on: 10/17/2019

REVISION

R1	
R2	11/13/19 KF - Calculated square footage as individual letters, adjusted lease line

Interior D	Skechers - WORK
Type:	Suspended D/F Sign
Illumination:	Internally Illuminated ONE SIDE ONLY
Square Footage:	10.33

Note: Installed a minimum of 48" off wall



D/F Suspended Sign Layout

Scale: 3/4" = 1'-0"

SK-WORK-HS-PLUG

Color Specifications:

■ 3M 7725-54 Lite Orange Vinyl

Electrical Detail:

- White LED's (Principal)
- (1) 60w Power Supplies
- Total Amps: 0.85
- (1) 20 amp 120V Circuit Req.



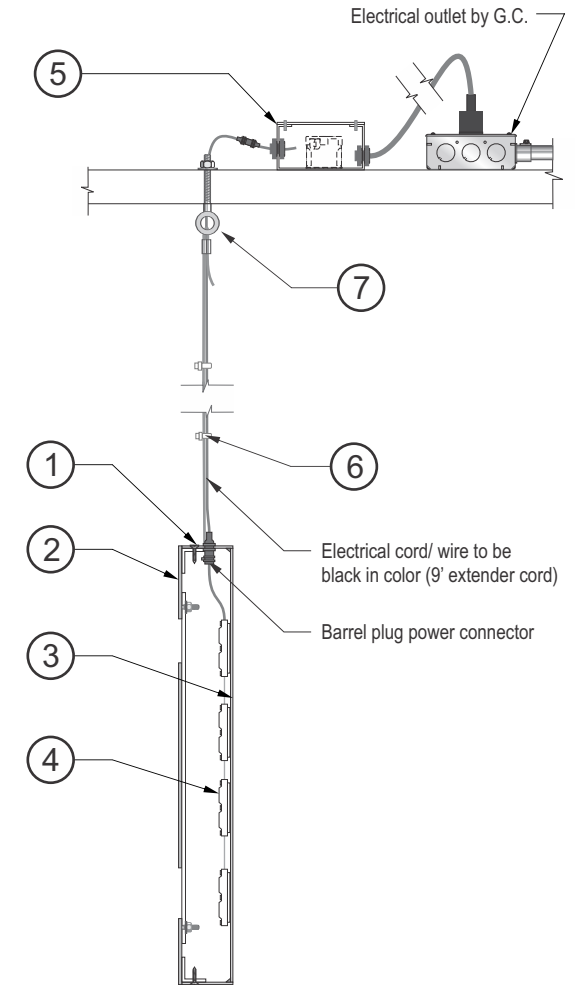
General Notes:

This sign is to be installed in accordance with the requirements of Article 600 of the National Electrical Code.

- Grounded and bonded per NEC 600.7/NEC 250
- Existing branch circuit in compliance with NEC 600.5, not to exceed 20 amps
- Sign is to be UL listed per NEC 600.3
- UL disconnect switch per NEC 600.6- required per sign component before leaving manufacturer. For multiple signs, a disconnect is permitted but not required for each section
- The location of the disconnect switch after installation shall comply with article 600.6 (A) (1) per NEC

Specifications: Suspended sign (Open Ceiling)

- 2" x 0.080" Aluminum returns painted to match: SW-6524 Commodore Blue/Satin Finish
- 0.080" Routed aluminum face painted to match Matthews satin black:
SQUARES: to be routed from face w/ white 1/8" acrylic backer
WORK: to be 1/8" aluminum FCO painted Matthews satin black mounted to white acrylic backer
MADE TO LAST: to be 1/8" aluminum square painted Matthews satin black. Copy to be Routed out to show thru to white back up. Overlay with 3m #7725-54 Lite orange vinyl.
 Aluminum face mounted w/ #6 counter sunk screws into 1/2" x 1/2" x 1/8" aluminum angle thru return. All backers to be attached w/ 1/4-20 welded studs.
- 0.080 Aluminum back PTM SW-6524 Commodore Blue/Satin Finish & applied
 White vinyl matching front face design.
- White LED's (Principal)
- Principal PL-PS-60W-DT indoor power supply within metal enclosure (painted black). 5' power cord (black)
- Low voltage wiring w/ clear zip ties to keep taught (electrical cord/ wire to be black in color)
- 3/16" Eyebolts & 1/8" cable in 4' length w/ #1 Die cast end stop at cabinet



Section @ Suspended Sign

SCALE: N.T.S.



This rendering is the property of Apex Sign Group. It is for the exclusive use of Apex Sign Group and the party for which it was intended. The requestor. It is an unpublished original drawing not to be distributed, reproduced, or exhibited without the explicit consent of Apex Sign Group. Please contact your account manager for questions regarding this statement.

apexsigngroup.com

Skechers

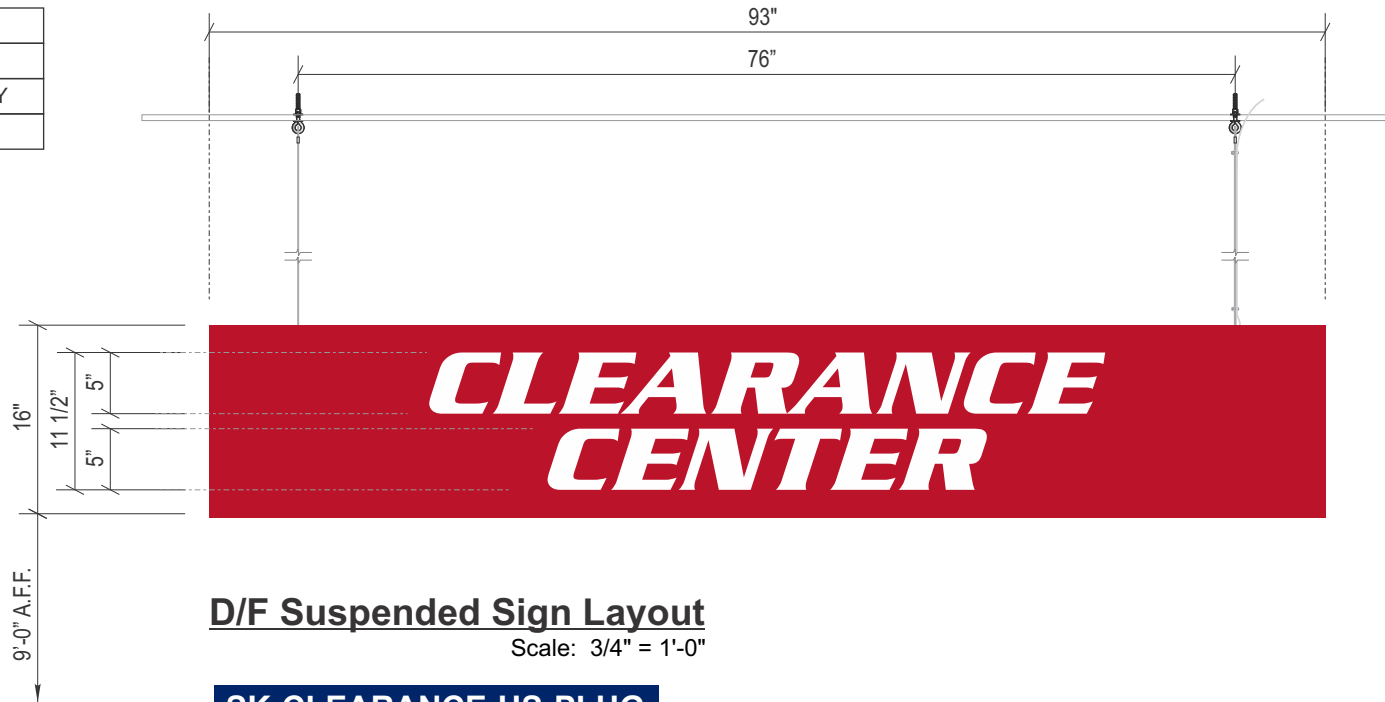
Crossgates Commons
 161 Washington Ave Ext, Spc #204A
 Albany, NY 12205

Project ID#: 121841
 Project Mgr: Heather Moore
 Designer: Emily Hardy
 Created on: 10/17/2019

REVISION

R1	
R2	11/13/19 KF - Calculated square footage as individual letters, adjusted lease line

Interior E	Skechers - CLEARANCE
Type:	Suspended D/F Sign
Illumination:	Internally Illuminated ONE SIDE ONLY
Square Footage:	10.33



D/F Suspended Sign Layout

Scale: 3/4" = 1'-0"

SK-CLEARANCE-HS-PLUG

Color Specifications:

■ PMS #200C Red

Electrical Detail:

- White LED's (Principal)
- (1) 60w Power Supplies
- Total Amps: 0.85
- (1) 20 amp 120V Circuit Req.



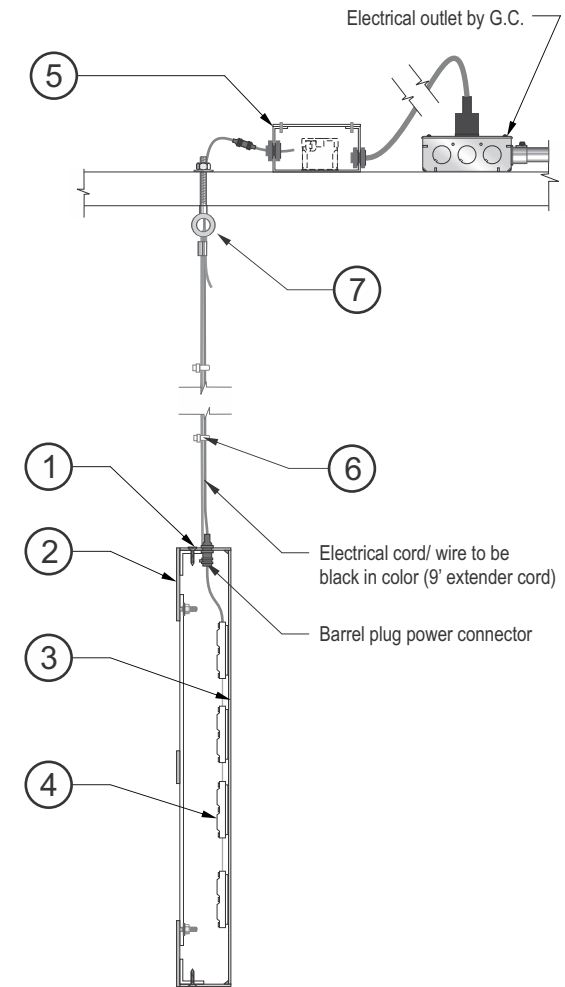
General Notes:

This sign is to be installed in accordance with the requirements of Article 600 of the National Electrical Code.

- Grounded and bonded per NEC 600.7/NEC 250
- Existing branch circuit in compliance with NEC 600.5, not to exceed 20 amps
- Sign is to be UL listed per NEC 600.3
- UL disconnect switch per NEC 600.6- required per sign component before leaving manufacturer. For multiple signs, a disconnect is permitted but not required for each section
- The location of the disconnect switch after installation shall comply with article 600.6 (A) (1) per NEC

Specifications: Suspended sign (Open Ceiling)

- 2" x 0.080" Aluminum returns painted to match PMS #200C Red
- 0.080" Routed aluminum face painted to match PMS #200C Red:
CLEARANCE CENTER: to be routed from face with white acrylic backer
Aluminum face mounted w/ #6 counter sunk screws into 1/2" x 1/2" x 1/8" aluminum angle thru return.
All backers to be attached w/ 1/4-20 welded studs.
- 0.080 Aluminum backside PTM PMS #200C Red & applied white vinyl matching front face design.
- White LED's (Principal)
- Principal PL-PS-60W-DT indoor power supply within metal enclosure (painted black). 5' power cord (black)
- Low voltage wiring w/ clear zip ties to keep taught (electrical cord/ wire to be black in color)
- 3/16" Eyebolts & 1/8" cable in 4' length w/ #1 Die cast end stop at cabinet



Section @ Suspended Sign

SCALE: N.T.S.



This rendering is the property of Apex Sign Group. It is for the exclusive use of Apex Sign Group and the party for which it was intended. The requestor. It is an unpublished original drawing not to be distributed, reproduced, or exhibited without the explicit consent of Apex Sign Group. Please contact your account manager for questions regarding this statement.

apexsigngroup.com

Skechers

Crossgates Commons
161 Washington Ave Ext, Spc #204A
Albany, NY 12205

Project ID#: 121841
Project Mgr: Heather Moore
Designer: Emily Hardy
Created on: 10/17/2019

REVISION

R1	
R2	11/13/19 KF - Calculated square footage as individual letters, adjusted lease line

Interior F	36" Skechers Kids Puck Sign
Type:	Suspended D/F Sign
Illumination:	Internally Illuminated ONE SIDE ONLY
Square Footage:	7.07

SK-KIDS-PUCK-HS-PLUG

Color Specifications:

- Pantone 281C Blue
- SW-6524 Commodore Blue/Satin Finish
- Pantone 382C Green
- 3M 3630-147 Lt.Blue Vinyl
- 3M 7725-10 White Vinyl

Electrical Detail:

- White LED's (Principal)
- (1) 60w Power Supplies
- Total Amps: 0.85
- (1) 20 amp 120V Circuit Req.



General Notes:

This sign is to be installed in accordance with the requirements of Article 600 of the National Electrical Code.

- Grounded and bonded per NEC 600.7/NEC 250
- Existing branch circuit in compliance with NEC 600.5, not to exceed 20 amps
- Sign is to be UL listed per NEC 600.3
- UL disconnect switch per NEC 600.6- required per sign component before leaving manufacturer. For multiple signs, a disconnect is permitted but not required for each section
- The location of the disconnect switch after installation shall comply with article 600.6 (A) (1) per NEC



Puck Sign Layout

Scale: 1" = 1'-0"

Specifications:

1. 1 7/8" x 0.063" (Overall depth 2") Aluminum returns #6 counter sunk screwed to face and painted to match: SW #6524 'Commodore Blue', satin finish
2. 0.125" Routed aluminum pan face painted to match SW #6524 'Commodore Blue' satin finish. Attached to return w/ #6 counter sunk screws
 - Skechers: Routed out from face w/ #7328 white 0.118" plex backer
 - Kids: Routed out from face w/ #7328 white 0.118" plex backer. Overlay w/ digitally printed graphics on clear media w/ clear gloss laminate. Media to extend beyond routed opening. To match PMS 382C Green and PMS 281C Blue
 - Dots: First surface applied vinyl 3M#3630-147 Light European Blue
3. White LED's (Principal)
4. Principal PL-PS-60W-DT indoor power supply within metal enclosure (painted black). 5' power cord (black)
5. Primary electrical feed- black low voltage wiring w/ clear zip ties to keep taught (electrical cord/ wire to be black in color)
6. 3/16" Eyebolts & 1/8" cable in 12' length.
7. 0.125 Aluminum back of puck sign painted to match SW #6524 'Commodore Blue' satin finish, w/ 3M #7725-10 Opaque white vinyl and digitally printed graphics w/ clear gloss laminate. To match PMS 382C Green and PMS 281C Blue

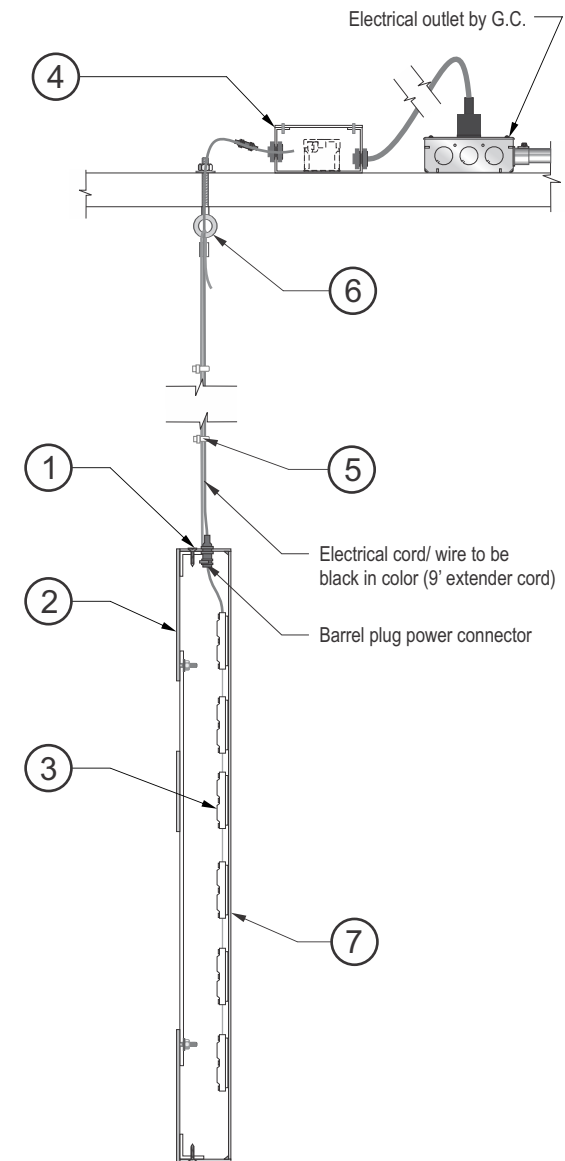
Side View

Scale: 1" = 1'-0"

Rear View

Scale: 1" = 1'-0"

Applied Vinyl to match front side



Section @ Suspended Sign

SCALE: N.T.S.



This rendering is the property of Apex Sign Group. It is for the exclusive use of Apex Sign Group and the party for which it was intended. The requestor. It is an unpublished original drawing not to be distributed, reproduced, or exhibited without the explicit consent of Apex Sign Group. Please contact your account manager for questions regarding this statement.

apexsigngroup.com

Skechers

Crossgates Commons
161 Washington Ave Ext, Spc #204A
Albany, NY 12205

Project ID#: 121841
Project Mgr: Heather Moore
Designer: Emily Hardy
Created on: 10/17/2019

REVISION

R1
R2 11/13/19 KF - Calculated square footage as individual letters, adjusted lease line

Interior G	Skechers
Type:	S/F THANK YOU Suspended Sign
Illumination:	Non-illuminated
Square Footage:	5.31



S/F Suspended Sign Detail

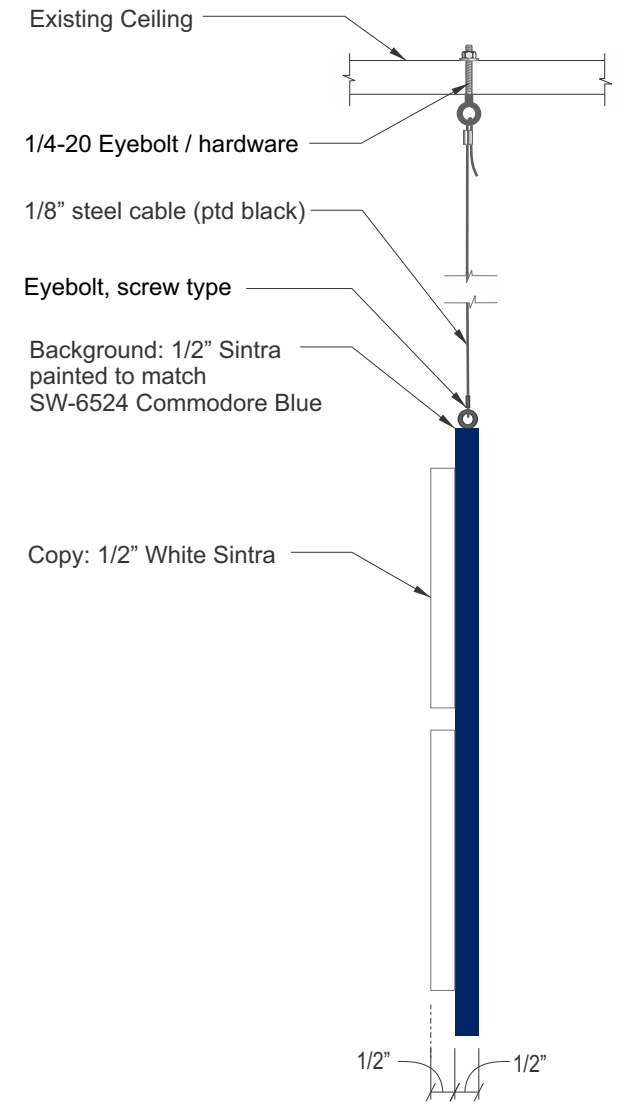
SK-THANKYOU-S

Scale: 1" = 1'-0"

■ SW-6524 Commodore Blue/Satin Finish

Font; Serpentine Demi Bold Italic ('City' copy will change per location)

COPY TO BE APPROVED BY DISTRICT MANAGER FOR REGIONAL APPROPRIATENESS.



Section @ Non-Illum. Sign

Scale: N.T.S.



This rendering is the property of Apex Sign Group. It is for the exclusive use of Apex Sign Group and the party for which it was intended. It is an unpublished original drawing not to be distributed, reproduced, or exhibited without the explicit consent of Apex Sign Group. Please contact your account manager for questions regarding this statement.

apexsigngroup.com

Skechers
 Crossgates Commons
 161 Washington Ave Ext, Spc #204A
 Albany, NY 12205

Project ID#: **121841**
 Project Mgr: Heather Moore
 Designer: Emily Hardy
 Created on: 10/17/2019

REVISION	R1
	R2 11/13/19 KF - Calculated square footage as individual letters, adjusted lease line

Mirror Vinyl	1 1/2" Skechers	
Type:	Applied vinyl on mirror	
Illumination:	Non-illuminated	
Square Footage:	0.17	QTY (5)



Interior Vinyl Detail

QTY (5) Scale: Half Scale

SK-MV

Specifications: Interior Mirror Vinyl

First surface applied 3M #3630-137 European Blue vinyl.
To be installed 2" down from top of interior mirrors (at sales floor or inside fitting rooms)



This rendering is the property of Apex Sign Group. It is for the exclusive use of Apex Sign Group and the party for which it was intended, the requestor. It is an unpublished original drawing not to be distributed, reproduced, or exhibited without the explicit consent of Apex Sign Group. Please contact your account manager for questions regarding this statement.

apexsigngroup.com

Skechers
Crossgates Commons
161 Washington Ave Ext, Spc #204A
Albany, NY 12205

Project ID#: **121841**
Project Mgr: Heather Moore
Designer: Emily Hardy
Created on: 10/17/2019

REVISION	R1
	R2 11/13/19 KF - Calculated square footage as individual letters, adjusted lease line

Vinyl	1 1/4" Skechers	
Type:	Applied vinyl, existing trashcan	
Illumination:	Non-illuminated	
Square Footage:	.12	QTY (8)



Vinyl Detail for Trashcans

QTY (8)

Scale: Half Scale

SK-VYL

Specifications: Vinyl

First surface applied 3M 7725-10 opaque white vinyl. Applied to both sides of trashcan underneath engraved wording.



Proposed



This rendering is the property of Apex Sign Group. It is for the exclusive use of Apex Sign Group and the party for which it was intended, the requestor. It is an unpublished original drawing not to be distributed, reproduced, or exhibited without the explicit consent of Apex Sign Group. Please contact your account manager for questions regarding this statement.

apexsigngroup.com

Skechers
 Crossgates Commons
 161 Washington Ave Ext, Spc #204A
 Albany, NY 12205

Project ID#: **121841**
 Project Mgr: Heather Moore
 Designer: Emily Hardy
 Created on: 10/17/2019

REVISION	R1
	R2 11/13/19 KF - Calculated square footage as individual letters, adjusted lease line