



McFarland Johnson

60 RAILROAD PLACE
SUITE 402
SARATOGA SPRINGS, NEW YORK 12866
P: 518-580-9380 F: 518-580-9383
SaratogaROM@mjinc.com

PROJECT MILESTONE
PRELIMINARY PLANS

NO.	DATE	DESCRIPTION

CLIENT:
ALBANY PORT DISTRICT COMMISSION
ALBANY, NEW YORK

PROJECT:
PORT OF ALBANY SITE INFRASTRUCTURE IMPROVEMENTS: 700 SMITH BLVD

DRAWN	JES
DESIGNED	NSO
CHECKED	AJF
SCALE	1"=40'
DATE	OCTOBER 2021
PROJECT	18641.00

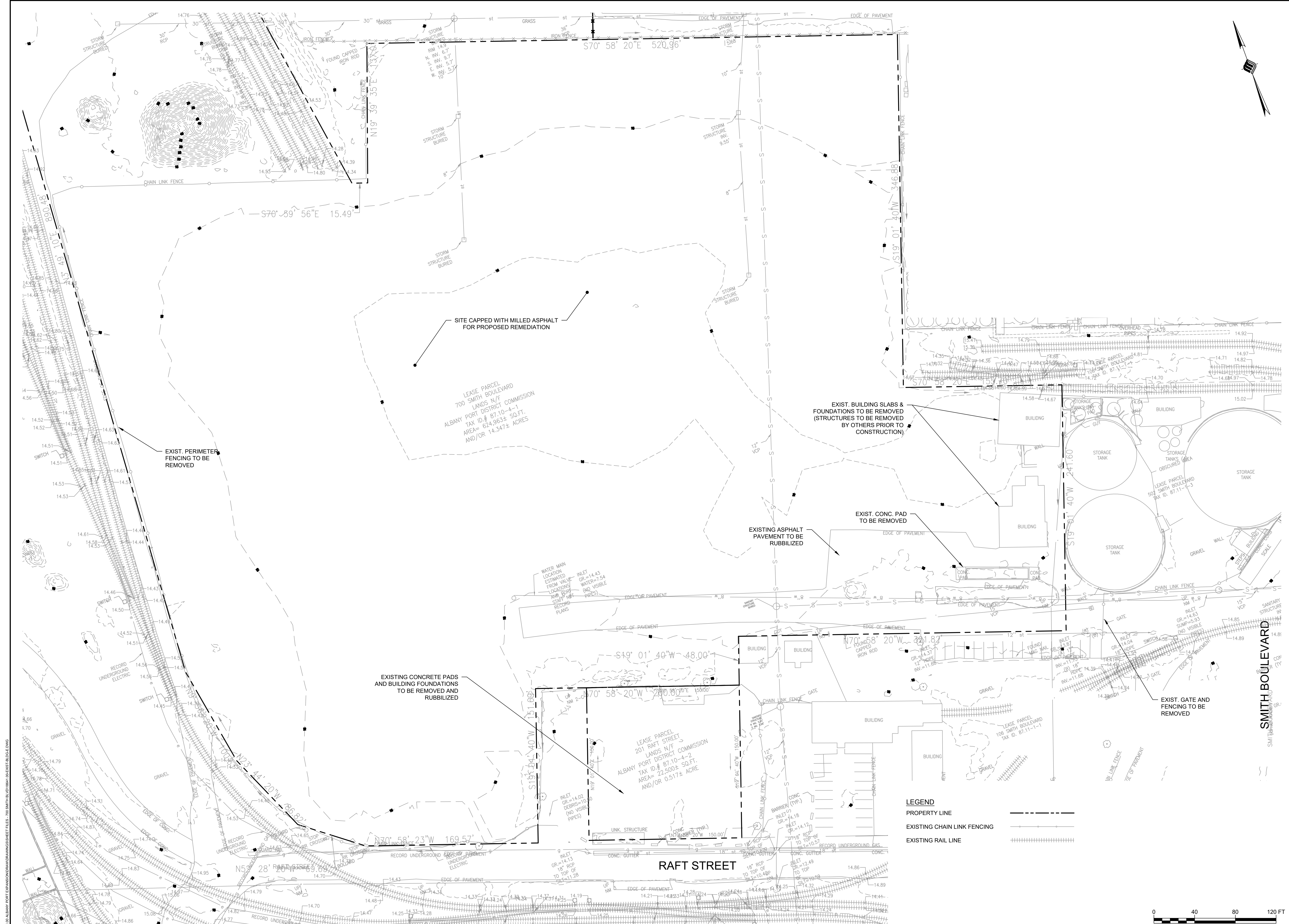
IT IS A VIOLATION OF LAW FOR ANY PERSON, UNLESS THEY ARE ACTING UNDER THE DIRECT OR SUPERVISORY CONTROL OF A LICENSED PROFESSIONAL ENGINEER, ARCHITECT, LANDSCAPE ARCHITECT, OR LAND SURVEYOR, TO ALTER IN ANY MANNER AN ITEM BEARING THE SEAL OR SIGNATURE OF SUCH PROFESSIONAL ENGINEER, ARCHITECT, LANDSCAPE ARCHITECT, OR LAND SURVEYOR. ANY ALTERATION SHALL BE MADE BY THE PROFESSIONAL ENGINEER, ARCHITECT, LANDSCAPE ARCHITECT, OR LAND SURVEYOR. ANY ALTERATION SHALL BE MADE BY THE PROFESSIONAL ENGINEER, ARCHITECT, LANDSCAPE ARCHITECT, OR LAND SURVEYOR. ANY ALTERATION SHALL BE MADE BY THE PROFESSIONAL ENGINEER, ARCHITECT, LANDSCAPE ARCHITECT, OR LAND SURVEYOR.

DRAWING TITLE
EXISTING CONDITIONS & DEMOLITION PLAN

DRAWING NUMBER

EX-01

3 OF 14



N:\PROJECTS\ALBANY PORT EXPANSION\DRAWINGS\DWG FILES\700 SMITH BLVD\01.DWG