

General Notes

- G1. THESE GENERAL NOTES ARE APPLICABLE TO THE ENTIRE CONSTRUCTION DOCUMENT. SET UNLESS OTHERWISE NOTED.
- G2. ALL DIMENSIONS ARE TO FINISH FACE AT EXISTING CONSTRUCTION, TO FINISH FACE AT MASONRY CONSTRUCTION AND TO FACE OF FRAMING AT DRYWALL CONSTRUCTION, UNLESS OTHERWISE NOTED.
- G3. +/- NOTATIONS ARE USED IN DIMENSION STRINGS TO ACCOUNT FOR VARIATIONS BETWEEN DRAWINGS AND FIELD CONDITIONS. GENERAL CONTRACTOR SHALL VERIFY ALL DIMENSIONS DURING LAYOUT AND INFORM ARCHITECT OF ANY DISCREPANCIES OR NECESSARY MODIFICATIONS PRIOR TO PROCEEDING WITH CONSTRUCTION.
- G4. PROVIDE UL LISTED FIRE-RATED FIRE AND SMOKE STOPPING AND/OR INFILL ASSEMBLY AT ALL PENETRATIONS THROUGH FIRE AND SMOKE-RATED CONSTRUCTION AS REQUIRED TO MAINTAIN THE INTEGRITY OF ANY AND ALL FIRE RATED ASSEMBLIES AND SMOKE PARTITIONS.
- G5. PROVIDE FIRE RETARDANT SOLID WOOD OR SHEET STEEL BLOCKING IN ALL WALLS AS REQUIRED FOR THE SECURE AND PROPER INSTALLATION OF ALL FRAMES, TRIM, CASEWORK, FURNITURE, SHELVING, ETC. SEE INTERIOR ELEVATIONS, DETAIL DRAWINGS, CASEWORK AND MILLWORK DRAWINGS, AND EQUIPMENT DRAWINGS TO COORDINATE BLOCKING REQUIREMENTS.
- G6. REVIEW LOCATION OF SWITCHES, CREDENTIAL READERS, AND DOOR ACTUATORS WITH ARCHITECT AND OWNER PRIOR TO ROUGH IN.

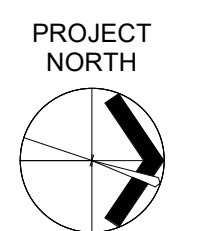
Floor Plan Legend

- DOOR AND FRAME
- OVERHEAD DOOR AND FRAME

General Keyed Notes

- 5' x 8' WINDOW, 36" SILL HEIGHT
- REMOTE EYEWASH NON-PLUMBED PORTABLES, NIC. SUPPLIED BY OWNER, PROVIDE HOOK-UPS, TYPICAL UON
- FIRE EXTINGUISHER NIC, PROVIDED BY OWNER
- FIRE EXTINGUISHER NIC, CABINET TO BE SUPPLIED
- DRINKING FOUNTAIN WITH BOTTLE FILL OUTLET

1 First Floor Plan - Overall
A-101E 1/8" = 1'-0"

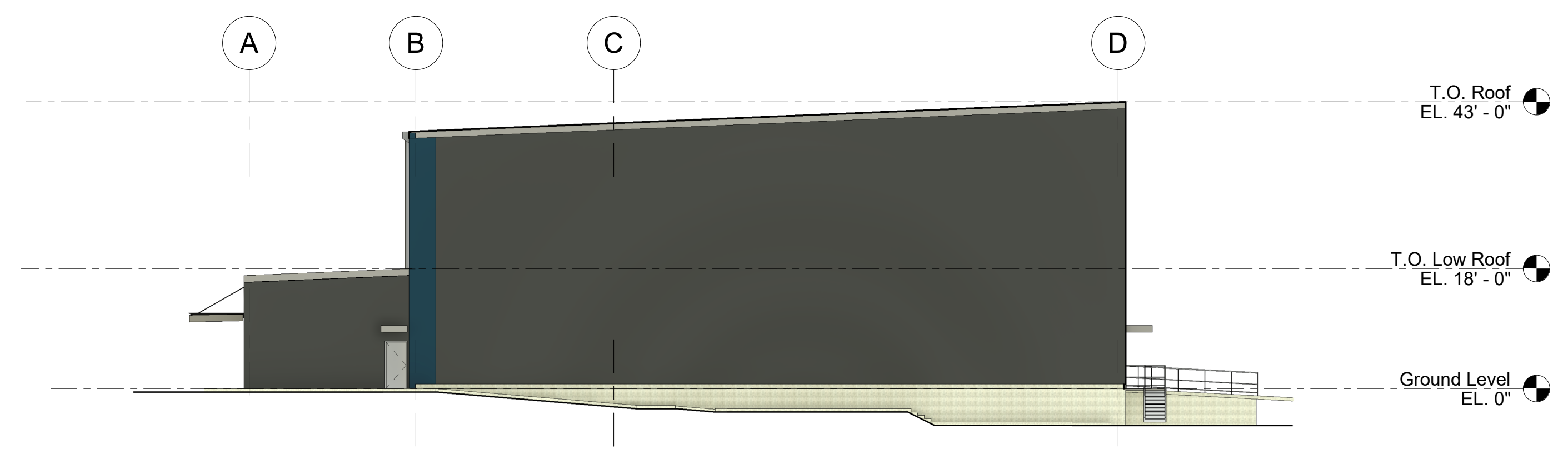


CLIENT: **Albany Port District Commission**
Town of Bethlehem, NY

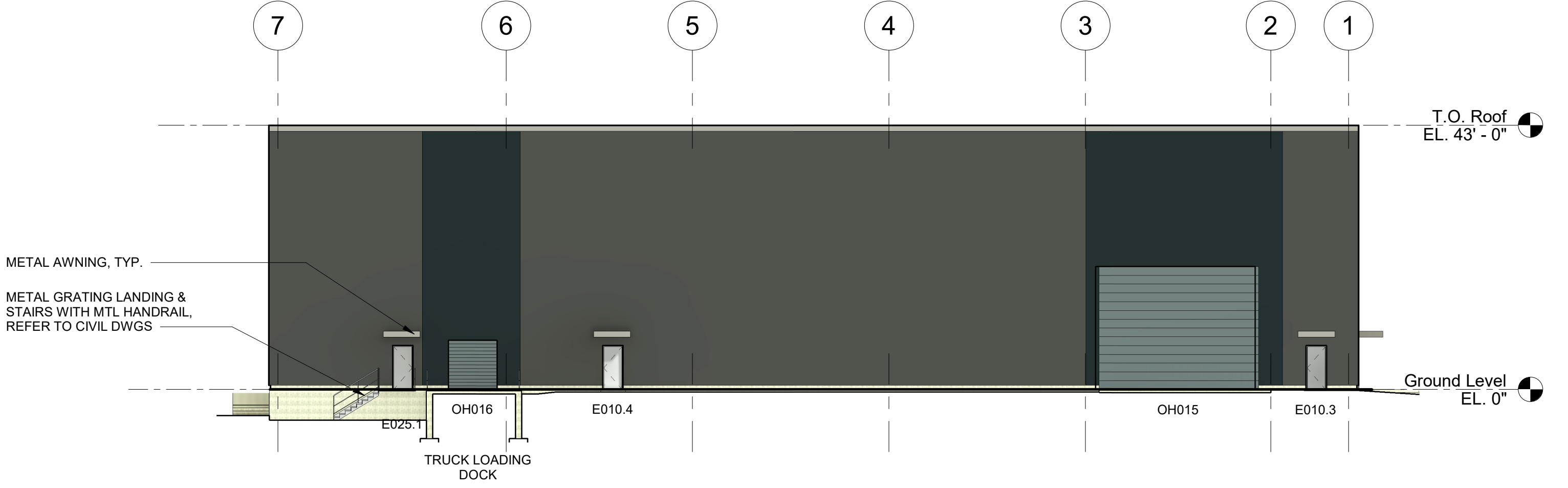
PROJECT: **Marmen-Welcon Tower Manufacturing Plant**
Building E - River Road, Glenmont, NY 12207

DRAWN	
DESIGNED	
CHECKED	
SCALE	AS NOTED
DATE	
PROJECT	

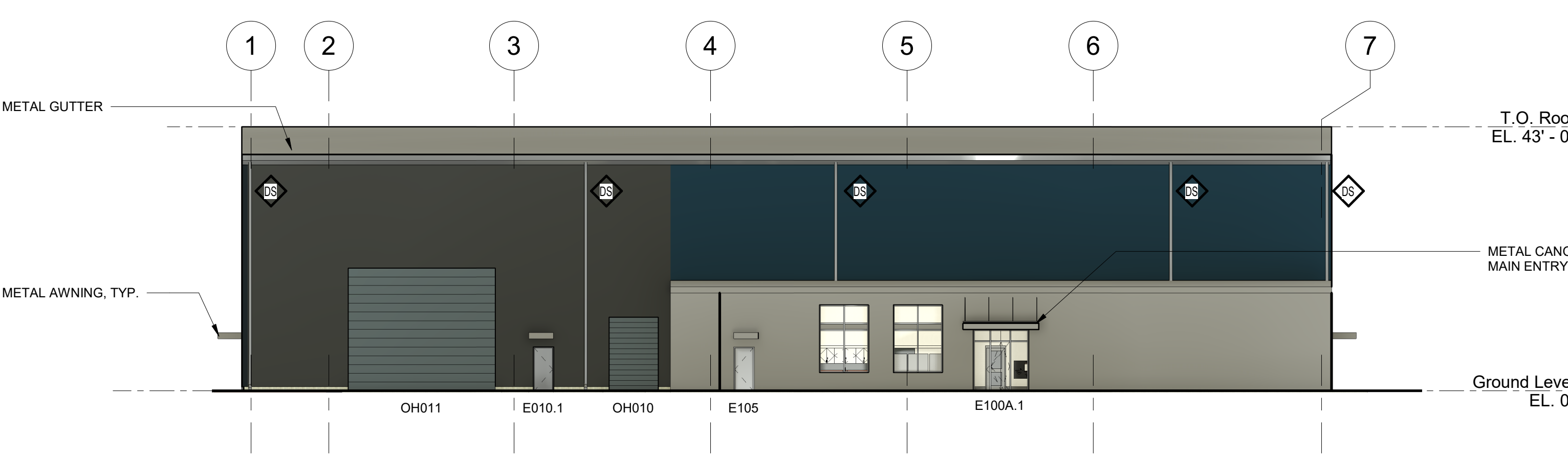
NO. REVISIONS	DATE
DRAWING TITLE	
First Floor Plan - Overall	
DRAWING NUMBER	A-101E



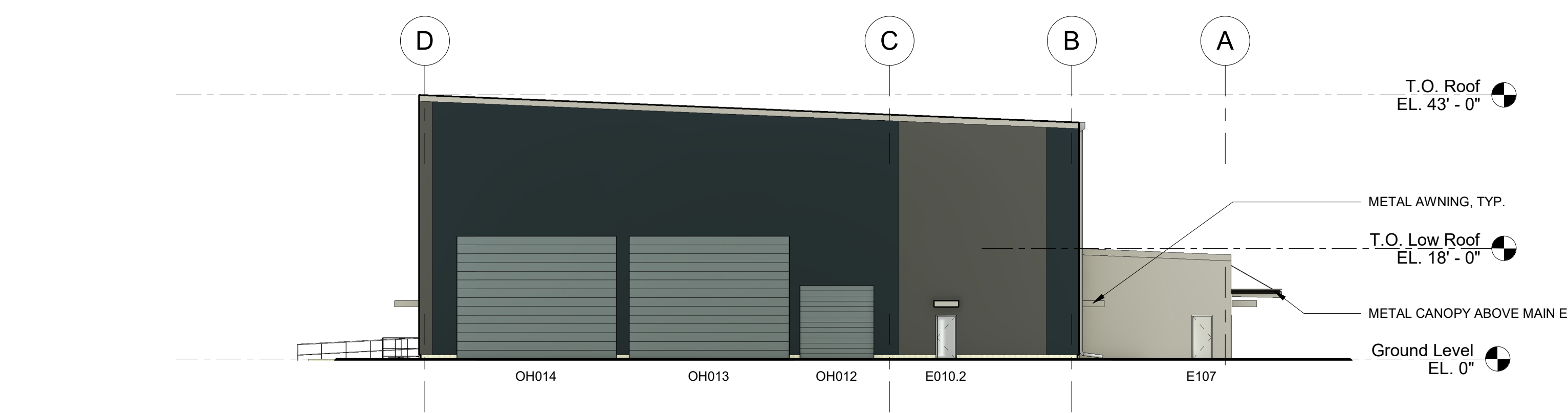
1 North Elevation
 A-201E 1/16" = 1'-0"



2 West Elevation
 A-201E 1/16" = 1'-0"



3 East Elevation
 A-201E 1/16" = 1'-0"



4 South Elevation
 A-201E 1/16" = 1'-0"

Elevation General Keyed Notes

⬡ METAL DOWNSPOUT