



---

## Architecture, Engineering & Construction

City Of Albany  
Department of Planning and Development  
200 Henry Johnson Blvd.  
Albany, NY 12210

RE: 276 Central Ave- ASM Phase 2 - Front Demolishment - **Demolition Debris Diversion Plan**

Following items are the approximate percentage volume of demolished materials that will be donated, recycled and or salvaged as stated for each item.

As shown, approximately 38% of the demolished materials will be donated, recycled and or salvaged. The remaining 62% of the demolished debris will be taken to an approved Landfill.

- 1) Main entrance wood Door & Transom: Will be donated to Salvation Army. 1%





- 2) The front Aluminum Door and storefront windows will be donated to Salvation Army or Recycle Center.  
1%





- 3) Corbels: The wooden Corbels will be removed with care and donated or salvage for re-use. 1%





- 4) Store Front Aluminum Doors & Windows: Will be removed with care and donated to Salvation Army or Recycle Center. 1%





- 5) Second Floor PVC DBL-Hung Windows: Will be removed with care and donated to Salvation Army or at Contractor's Yard for salvage. 1%





- 6) Min-Split wall mounted AC (Interior and Exterior Units): will be donated to Salvation Army or Non-Profit entity.

1%





- 7) Baseboard Heater Over 200ft: Will be removed with care and donated to Salvation Army or to a Metal Recycle Center for salvage or the Contractor's yard for salvage. 2%







- 8) Lobby door: Will be removed with care and donated to Salvation Army or a Non-Profit Organization.  
1%





9) Vinyl Siding: Vinyl siding will be removed and transferred to a Recycle Center.

2%





- 10) PVC Windows: will be remove with care and donated to Salvation Army or Habitat Restore or a Non-Profit entity. 2%



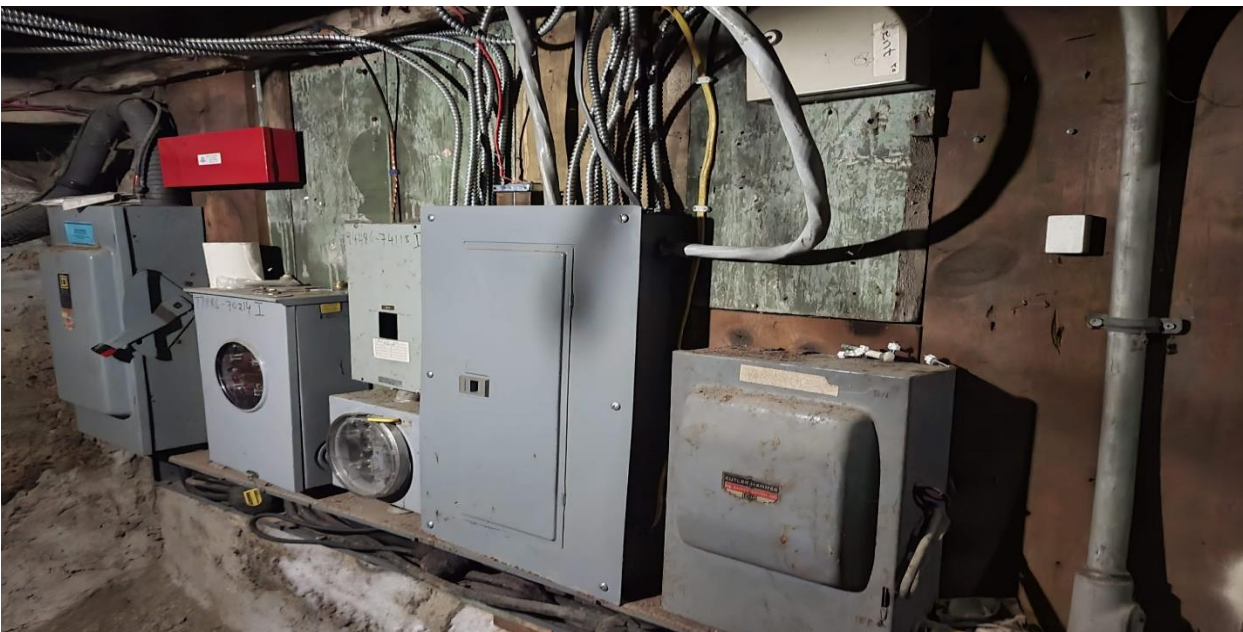




11) Interior Wood Doors total count 9: Will be remove with care and donated to Salvation Army or a Non-Profit entity. 2%



12) Electric Meter Box & Panel: Will be removed with care and donated to Salvation Army or a Non-Profit entity.  
1%





13) Working Boiler: Will be dismantled and donated to a Non-Profit entity or will be taken to a Recycle Center for metal salvage. 1%





- 14) Timber and wood Floor Joists & beams: Will be removed intact and will donated to a Non-Profit entity or be taken to salvage yard or recycling to wood chips. 5%





15) Brick: All bricks in this project will be trucked to a Recycle center to be crushed for Re-Use.

10%





16) Concrete: All concrete foundations and slab in the Basement will be trucked to a Recycle Center to be crushed for Re-Use. 5%

17) Steel: All the steel columns, beams and miscellaneous from the building demolition will be Recycled. 1%

Sincerely,

A handwritten signature in blue ink, appearing to read "Reza Hourmanesh".

Reza Hourmanesh, RA, CE, CDT

CC: File