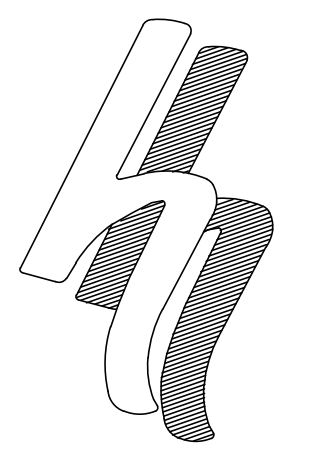
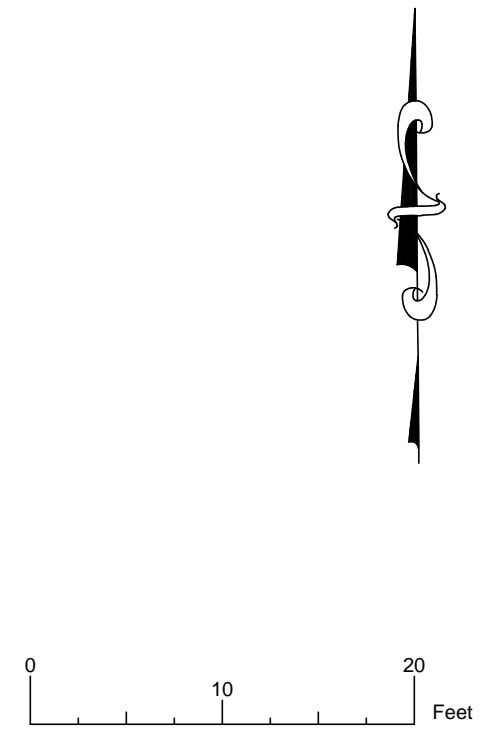


VICINITY MAP
MAP NOT TO SCALE

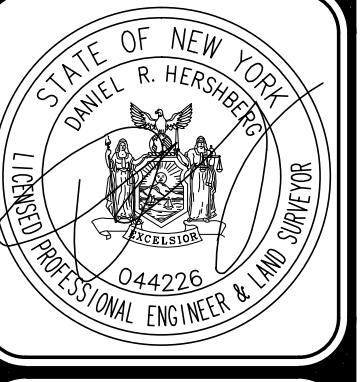
EXISTING SITE COVERAGE STATISTICS			
description	s.f.	acres	%
Total Area	9,306	0.21	100.0
Sub-Total Impervious Area	7,338	0.03	78.9
Building Area	1,279	0.03	13.7
Paved/Conc Area	6,059	0.14	65.1
Green Area	1,968	0.04	21.1

DRAWING INDEX	
DRAWING INDEX	SHEET NAME
C1	EXISTING CONDITIONS
C2	DEMOLITION PLAN
C3	SITE PLAN
C4	SITE DETAILS
C5	UTILITY PLAN
C6	EROSION AND SEDIMENT CONTROL PLAN AND DETAILS
C7	LANDSCAPING PLAN
C8	TRUCK ROUTING PLAN
C9	MAINTENANCE AND PROTECTION OF TRAFFIC PLAN



HERSHBERG & HERSHBERG
Consulting Engineers and Land Surveyors
18 Locust Street
Albany, New York 12203

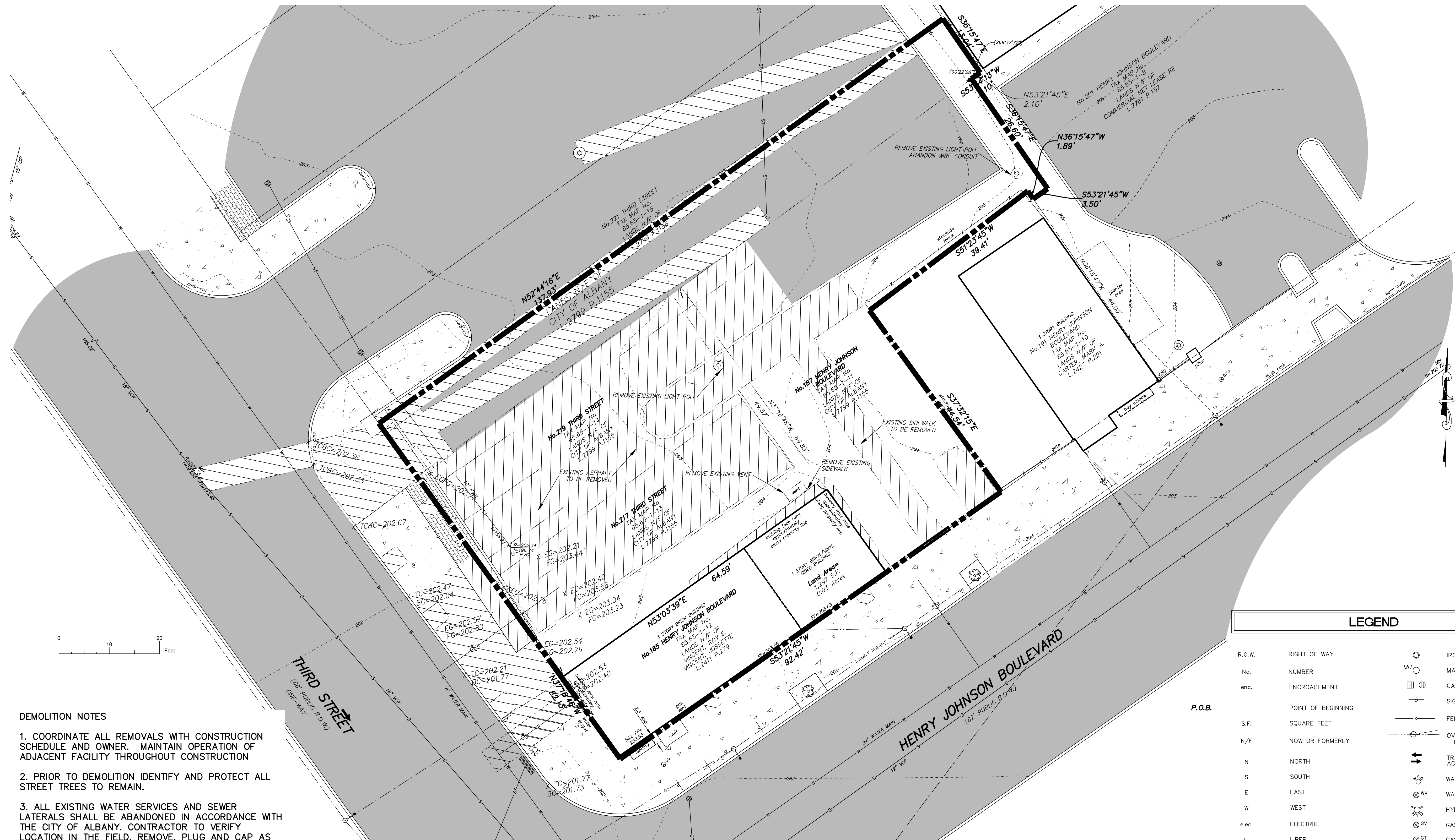
ALTERATION OF THIS DOCUMENT EXCEPT BY A LICENSED PROFESSIONAL ENGINEER OR LAND SURVEYOR, IS ILLEGAL.



DATE	REVISIONS
7/27/2020	GENERAL REVISIONS
8/17/2021	RESPONSE REVISIONS
11/09/2021	COVERAGE STAT
	REVISIONS

EXISTING PLAN FOR
185 HENRY JOHNSON BOULEVARD
CITY OF ALBANY
STATE OF NEW YORK

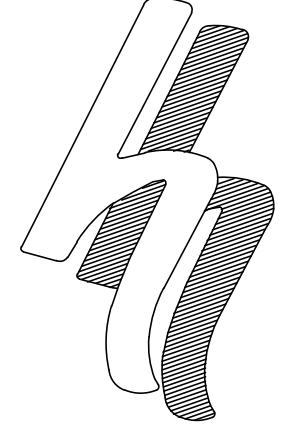
FILE: 200140
SCALE: AS NOTED
DATE: 7/22/20
CHK: DRH
BY: MAB
200140.DWG



DEMOLITION NOTES

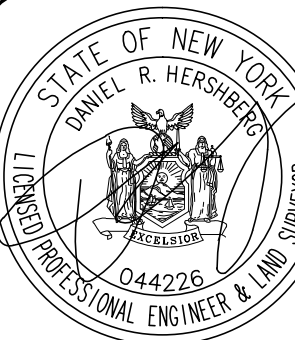
- COORDINATE ALL REMOVALS WITH CONSTRUCTION SCHEDULE AND OWNER. MAINTAIN OPERATION OF ADJACENT FACILITY THROUGHOUT CONSTRUCTION
- PRIOR TO DEMOLITION IDENTIFY AND PROTECT ALL STREET TREES TO REMAIN.
- ALL EXISTING WATER SERVICES AND SEWER LATERALS SHALL BE ABANDONED IN ACCORDANCE WITH THE CITY OF ALBANY. CONTRACTOR TO VERIFY LOCATION IN THE FIELD. REMOVE, PLUG AND CAP AS REQUIRED BY THE CITY OF ALBANY.
- REMOVE, STORE AND PROTECT EXISTING GRANITE CURBING THAT WILL BE REUSED.
- VERIFY ALL UTILITIES WHICH HAVE BEEN ABANDONED ARE NOT ACTIVE. RECONNECT ANY ACTIVE UTILITY LINES FOUND.
- PETROLEUM TANKS, OIL STORAGE TANKS, ETC SHALL BE REMOVED IN ACCORDANCE WITH LOCAL, STATE AND FEDERAL GUIDELINES.
- PRIOR TO THE START OF DEMOLITION, INSTALL TEMPORARY PROPERTY PINS AT ALL CORNERS. PINS TO BE INSTALLED BY A NYS LICENSED SURVEYOR. PINS TO BE MAINTAINED THROUGHOUT THE PROJECT.

LEGEND			
R.O.W.	RIGHT OF WAY	○	IRON ROD
No.	NUMBER	MH ○	MANHOLE
enc.	ENCROACHMENT	⊕	CATCHBASIN
		⊕	SIGN
S.F.	SQUARE FEET	—x—	FENCE LINE
N/F	NOW OR FORMERLY	—○—	OVERHEAD WIRE, UTILITY POLE & GUY WIRE
N	NORTH	↑↑	TRAFFIC FLOW ACCESS AREA
S	SOUTH	⊕	WATER SHUT OFF
E	EAST	⊕w	WATER VALVE
W	WEST	⊕h	HYDRANT
elec.	ELECTRIC	⊕v	GAS VALVE
L	LIBER	⊕t	GAS TEST
P.	PAGE	○	STREET LIGHT
		☆	LIGHT POLE
—SF—	STORM LINE	▒	CONCRETE
—S—	SEWER LINE	■	PAVEMENT
—W—	WATER LINE	▒	BRICK
—G—	GAS LINE	▒	TBR
—UE—	UNDERGROUND ELECTRIC		



HERSHBERG & HERSHBERG
Consulting Engineers and Land Surveyors
18 Locust Street
Albany, New York 12203

ALTERATION OF THIS DOCUMENT EXCEPT BY A LICENSED PROFESSIONAL ENGINEER OR LAND SURVEYOR, IS ILLEGAL.



DATE	REVISIONS
7/27/2020	GENERAL REVISIONS
8/17/2020	RESPONSE REVISIONS
11/09/2021	COVERAGE STATUS

STATE OF NEW YORK
DEMOLITION PLAN FOR 185 HENRY JOHNSON BOULEVARD CITY OF ALBANY STATE OF NEW YORK
FILE: 2001040 SCALE: AS NOTED DATE: 7/22/20 CHK: DRH EY: MAB

C2 OF 9

LEGEND

R.O.W.	RIGHT OF WAY	○	IRON ROD
No.	NUMBER	MH ○	MANHOLE
enc.	ENCROACHMENT	⊕	CATCHBASIN
P.O.B.	POINT OF BEGINNING	—	SIGN
S.F.	SQUARE FEET	—	FENCE LINE
N/F	NOW OR FORMERLY	—	OVERHEAD WIRE, UTILITY POLE & GUY WIRE
N	NORTH	↑↑	TRAFFIC FLOW ACCESS AREA
S	SOUTH	⇄	WATER SHUT OFF
E	EAST	⊗	WATER VALVE
W	WEST	⊗	HYDRANT
elec.	ELECTRIC	⊗	GAS VALVE
L	LIBER	⊗	GAS TEST
P.	PAGE	○	STREET LIGHT
—	STORM LINE	○	LIGHT POLE
—	SEWER LINE	■	CONCRETE
—	WATER LINE	■	PAVEMENT
—	GAS LINE	■	BRICK
—	UNDERGROUND ELECTRIC	—	
—	PROPOSED WATER MAIN		
—	PROPOSED SANITARY SEWER		
—	PROPOSED GAS LINE		
—	PROPOSED STORM SEWER		



NOTES

1. THE CONTRACTOR SHALL OBTAIN A STREET OPENING PERMIT AND A STREET ACCESS APPLICATION (CURB-CUT) FROM THE DEPARTMENT OF GENERAL SERVICES FOR ANY WORK WITHIN THE CITY'S ROW. CONTACT GARY BOHL AT 518-462-3529
2. A GRADING PERMIT WITH BONDS AND INSURANCE ARE REQUIRED. CONTRACTOR TO CONTACT PATRICK MCCUTCHEON, ENGINEERING DEPARTMENT (518-434-2387) FOR APPLICATION AND REVIEW.
3. MTP MAY BE REQUIRED PRIOR TO THE START OF WORK. CONTACT WILLIAM TRUDEAU, APD/TRAFFIC ENGINEERING AND SAFETY AT 518-434-5791.
4. EXISTING WATER AND SEWER LATERALS TO BE USED. THERE ARE NO NEW PROPOSED WATER OR SEWER SERVICES.

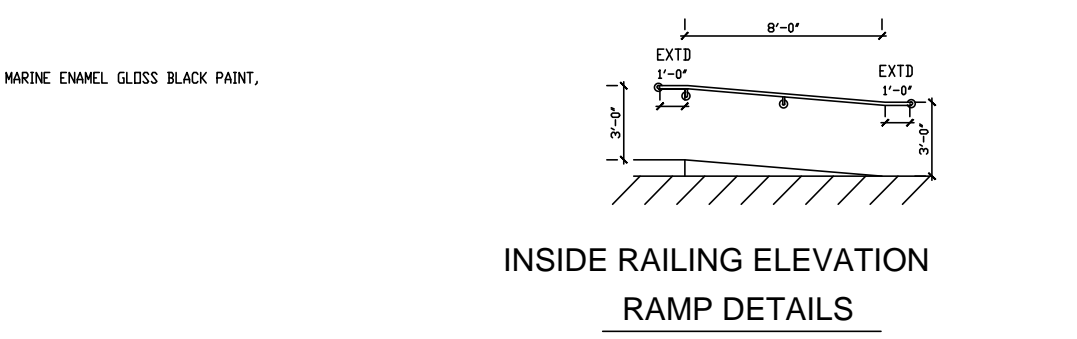
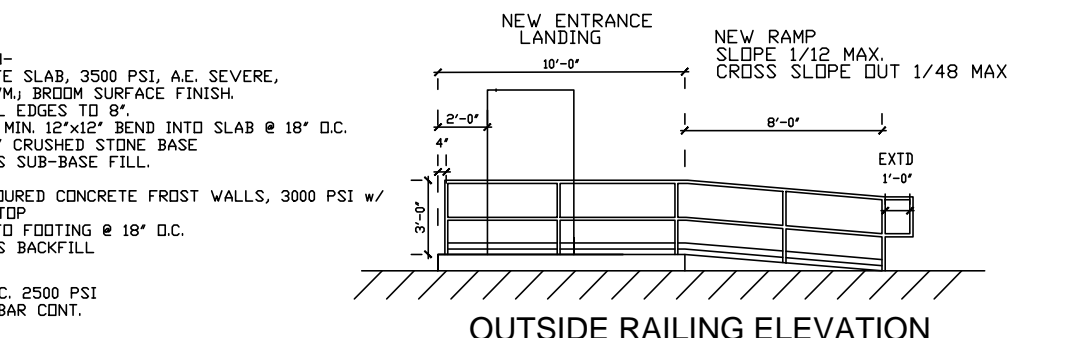
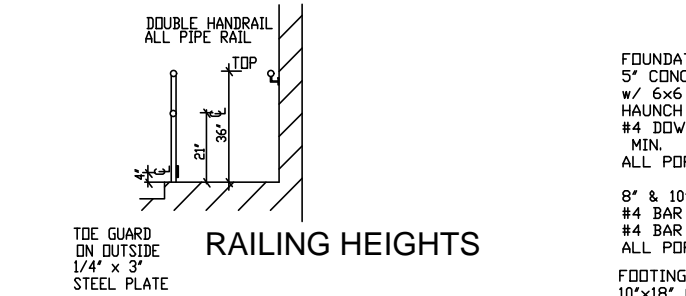
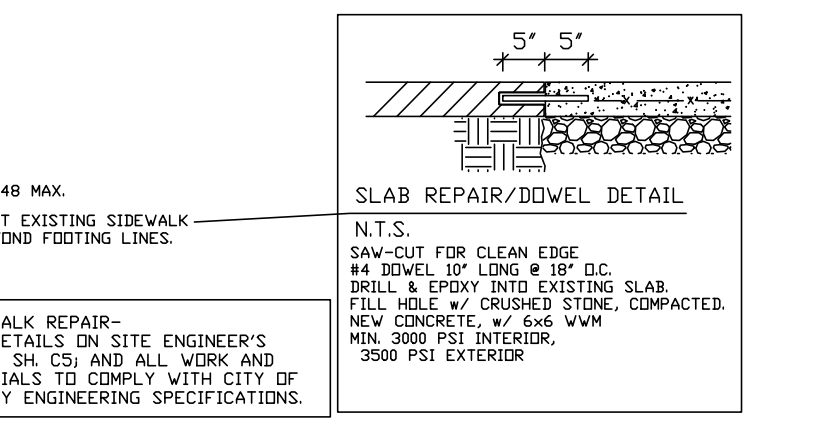
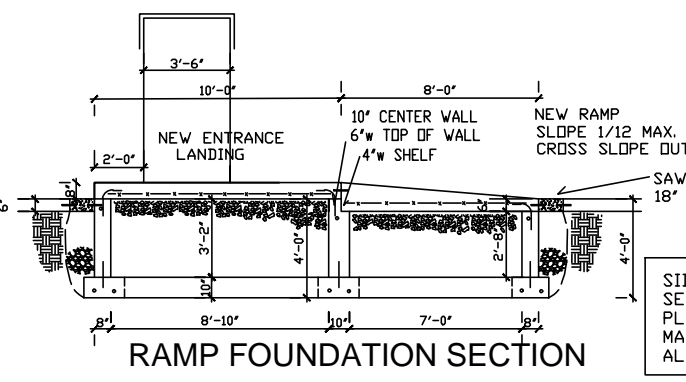
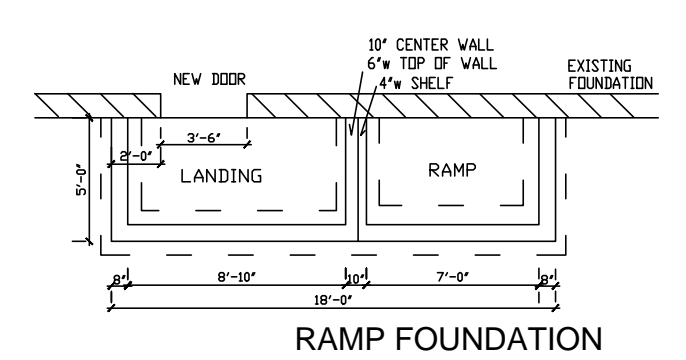
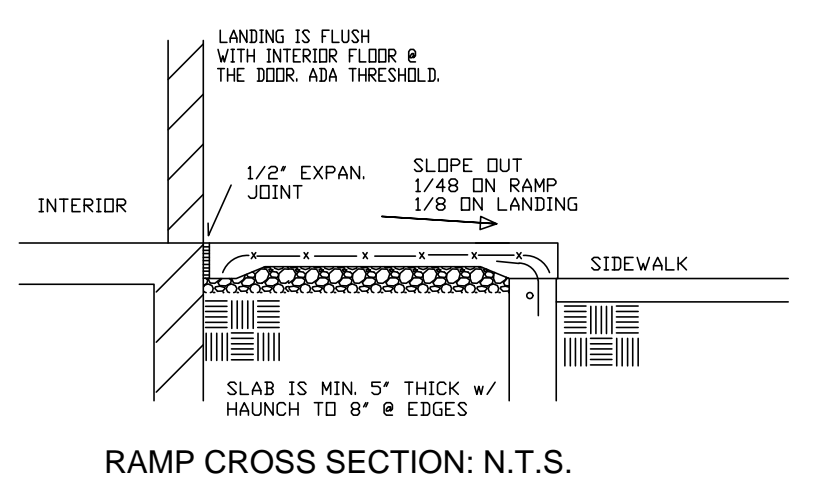
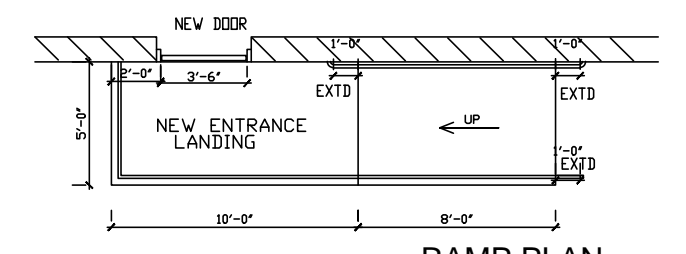
REQUIRED PARKING TABLE VEHICLES			
usage	unit by code	quantity by code	required parking
Residential-Multi Family	5 units	1 per unit	5
Restaurant	4,716 sf	1 per 150 sf	31
reduction for shared parking and proximity to transportation			10% (3 spaces)
reduction for shared parking and proximity to transportation			20% (7 spaces)
total			26
provided			3 on-site 4 on-street

PROPOSED SITE COVERAGE STATISTICS			
description	s.f.	acres	%
Total Area	9,306	0.21	100.0
Sub-Total Impervious Area	8,363	0.19	89.9
Building Area	5,338	0.12	57.4
Pavement and Walkway	3,025	0.07	32.5
Pervious Area	943	0.02	10.1

REQUIRED PARKING TABLE BICYCLES			
usage	unit by code	quantity by code	required parking
Residential-Multi Family	5 units	10% of required vehicles (min.=2)	2
Restaurant	4,716 sf	10% of required vehicles (min.=3)	3
total			5

STREET FURNITURE AND TREES REQUIRED:
 REQUIRED STREET FURNITURE
 SITE FRONTAGES
 HENRY JOHNSON BOULEVARD 92.42
 THIRD STREET 82.13
 TOTAL 174.55

TOTAL PIECES OF STREET FURNITURE REQUIRED 4
 PROVIDED PIECES OF STREET FURNITURE 4
 TREES
 TOTAL STREET TREES REQUIRED 5
 PROVIDED TREES (INCLUDING 2 EXISTING) 5

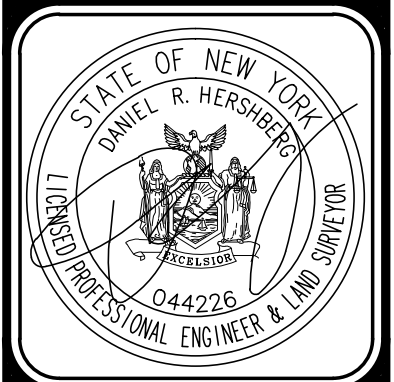


ALL RAILS SHALL BE ADA & NYS CODE COMPLIANT
 ALL STEEL PIPE RAIL, 1-1/4" I.D., SCH. 40
 ALL JOINTS W/REINFORCED CONCRETE
 RAILS & GUARDS TO BE CLEANED, GROUND AND SANDED
 RAILS & GUARDS TO HAVE (1) COAT STANDARD RED OXIDE PRIMER PAINT, AND (2) COATS MARINE ENAMEL GLOSS BLACK PAINT.
 FINISHING MARINE ENAMEL OR SHERWIN WILLIAMS SYSTEM 4000.
 INSTALLATION:
 ATTACH TO CONCRETE w/ PIPE FLANGE AND MIN. (2) STAINLESS STEEL WEDGE OR EPXY BOLTS, 4" FROM EDGE OF CONCRETE
 ATTACH TO WALL w/ STEEL BRACKETS w/ MIN. (2) STAINLESS STEEL MASONRY DR WOOD SCREWS. INSTALL SOLID BLOCKING IN THE FRAMED WALLS.
 CONTRACTOR TO PROVIDE ALL MATERIAL, CONNECTORS, ANCHORS, GROUT, PAINT, ETC. NEEDED FOR A COMPLETE INSTALLATION.

HANDICAP RAMP AND RAIL DETAIL (1/C3)
 NOT TO SCALE

HERSHBERG & HERSHBERG
 Consulting Engineers and Land Surveyors
 18 Locust Street
 Albany, New York 12203

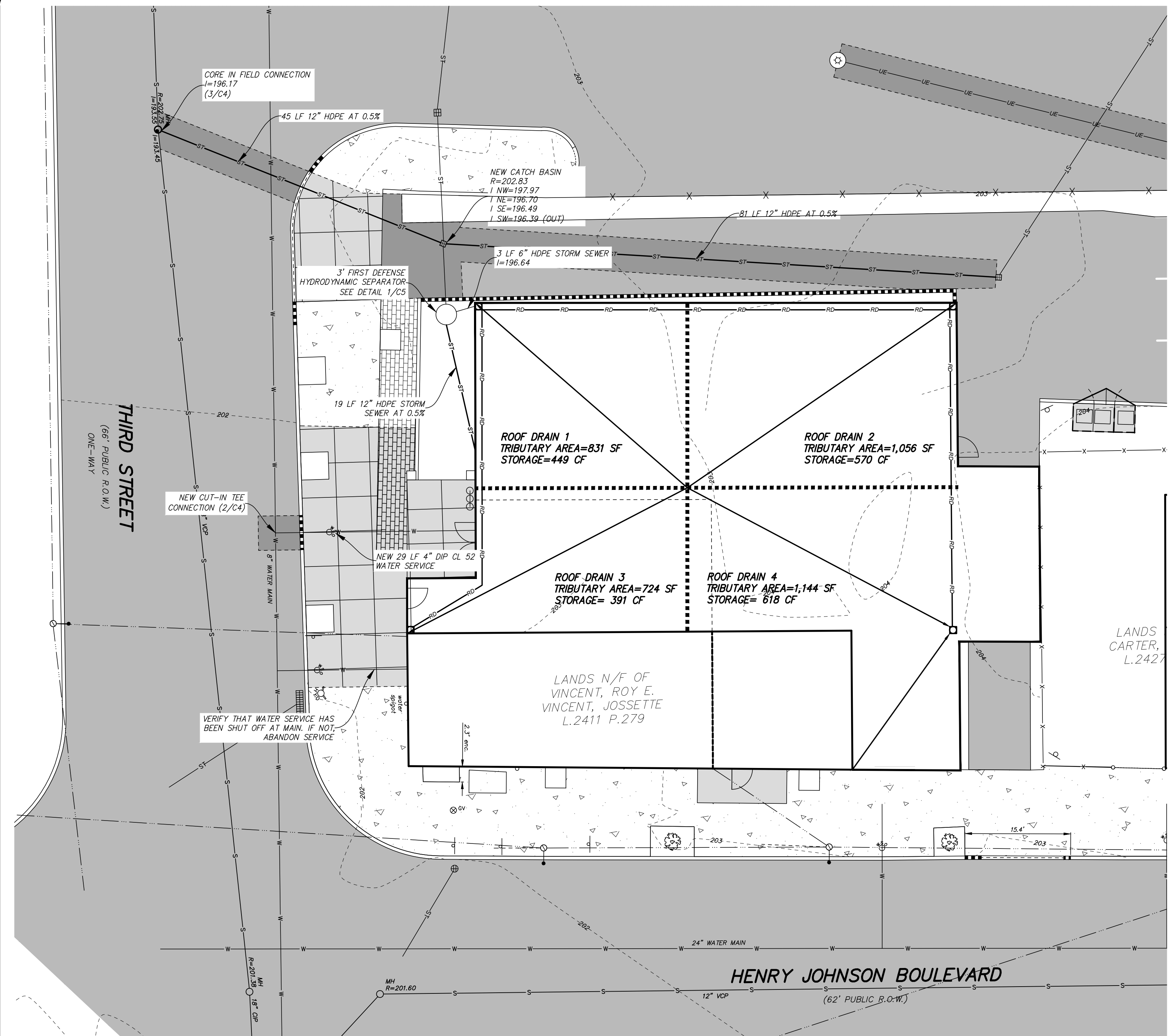
ALTERATION OF THIS DOCUMENT EXCEPT BY A LICENSED PROFESSIONAL ENGINEER OR LAND SURVEYOR, IS ILLEGAL.



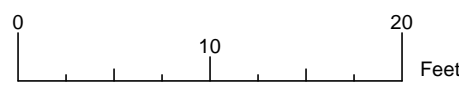
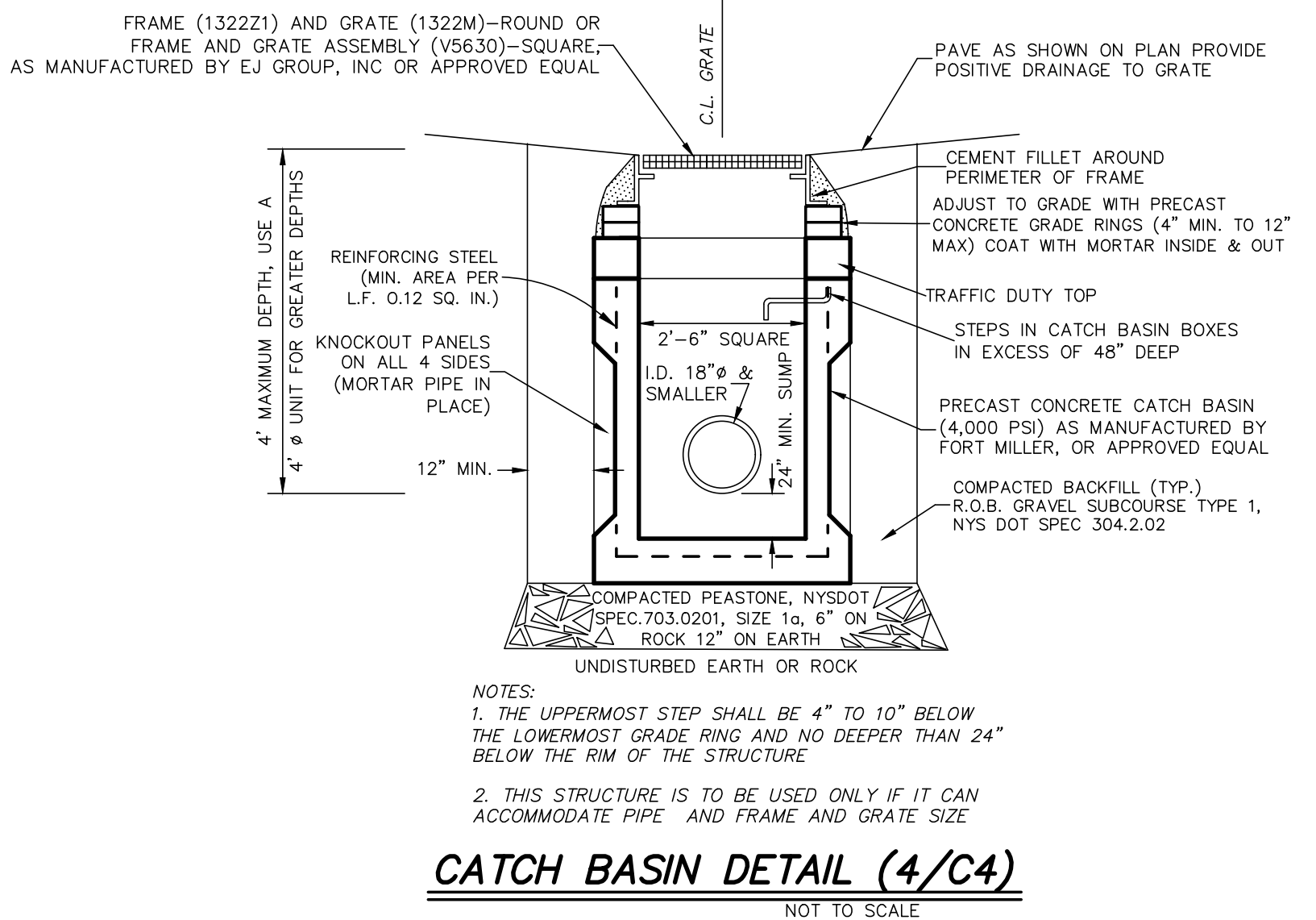
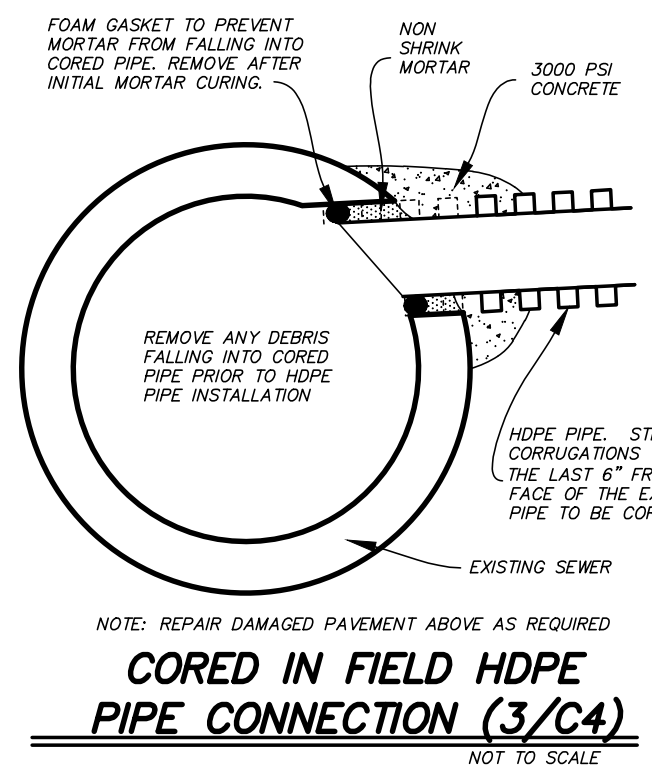
DATE	REVISIONS
7/27/2020	GENERAL REVISIONS
8/17/2020	RESPONSE REVISIONS
11/09/2021	COVERAGE STAT

**SITE PLAN FOR
 185 HENRY JOHNSON BOULEVARD
 CITY OF ALBANY
 STATE OF NEW YORK**

DATE: 7/22/20
 CHECK: DRP
 BY: MAB
 SCALE: AS NOTED
 FILE: 200140



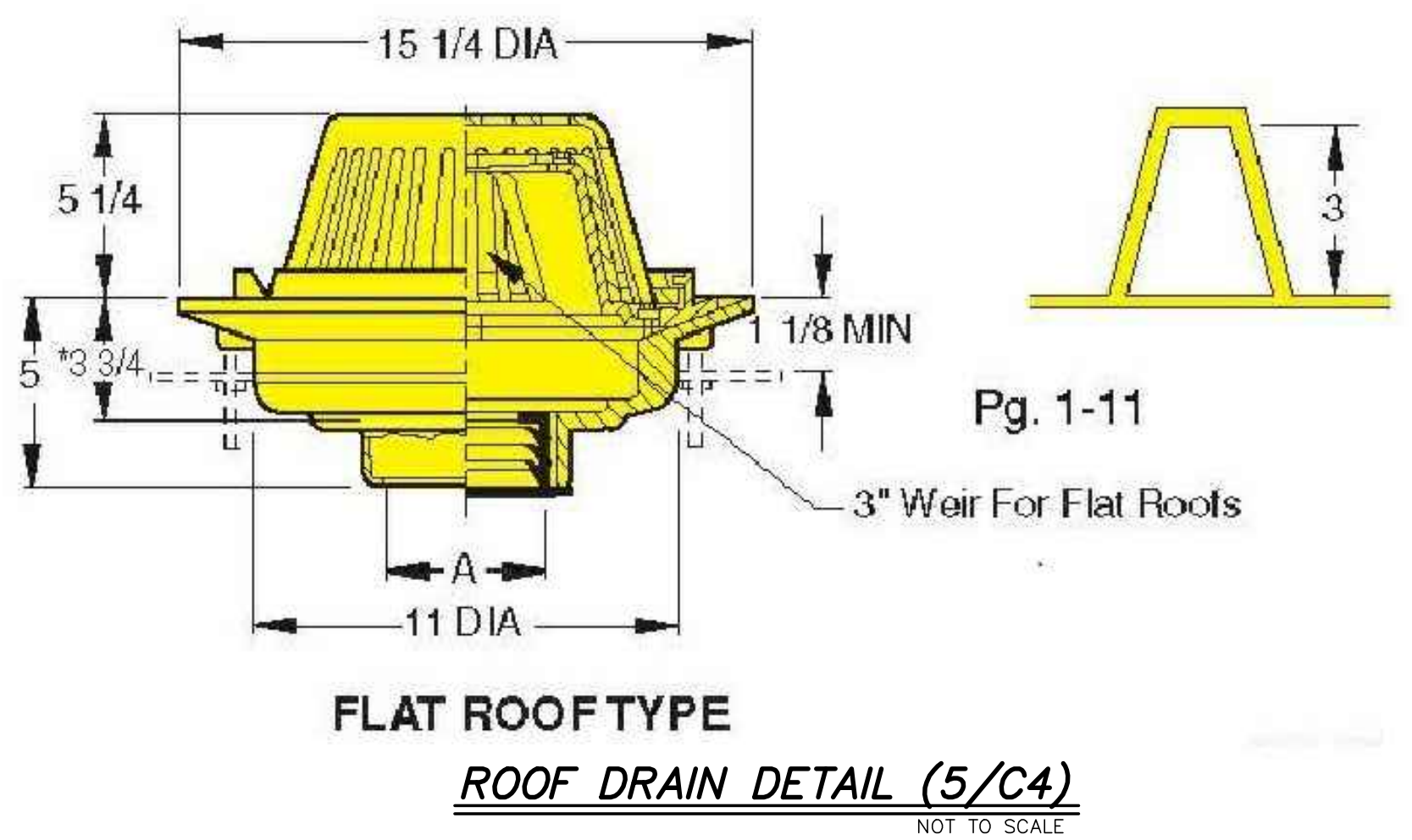
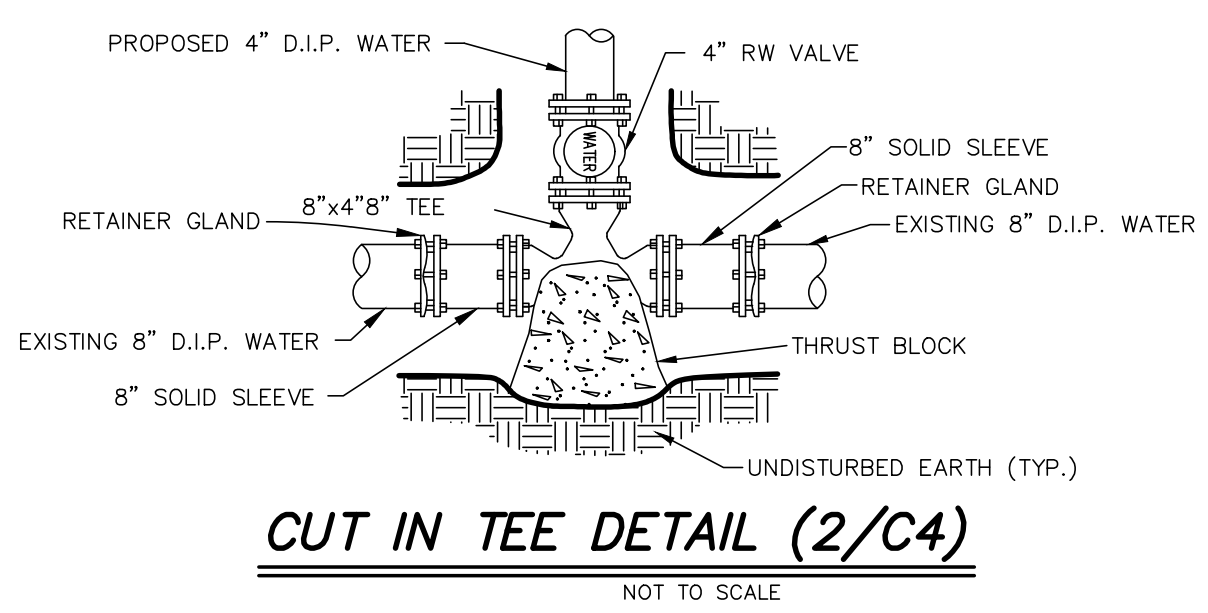
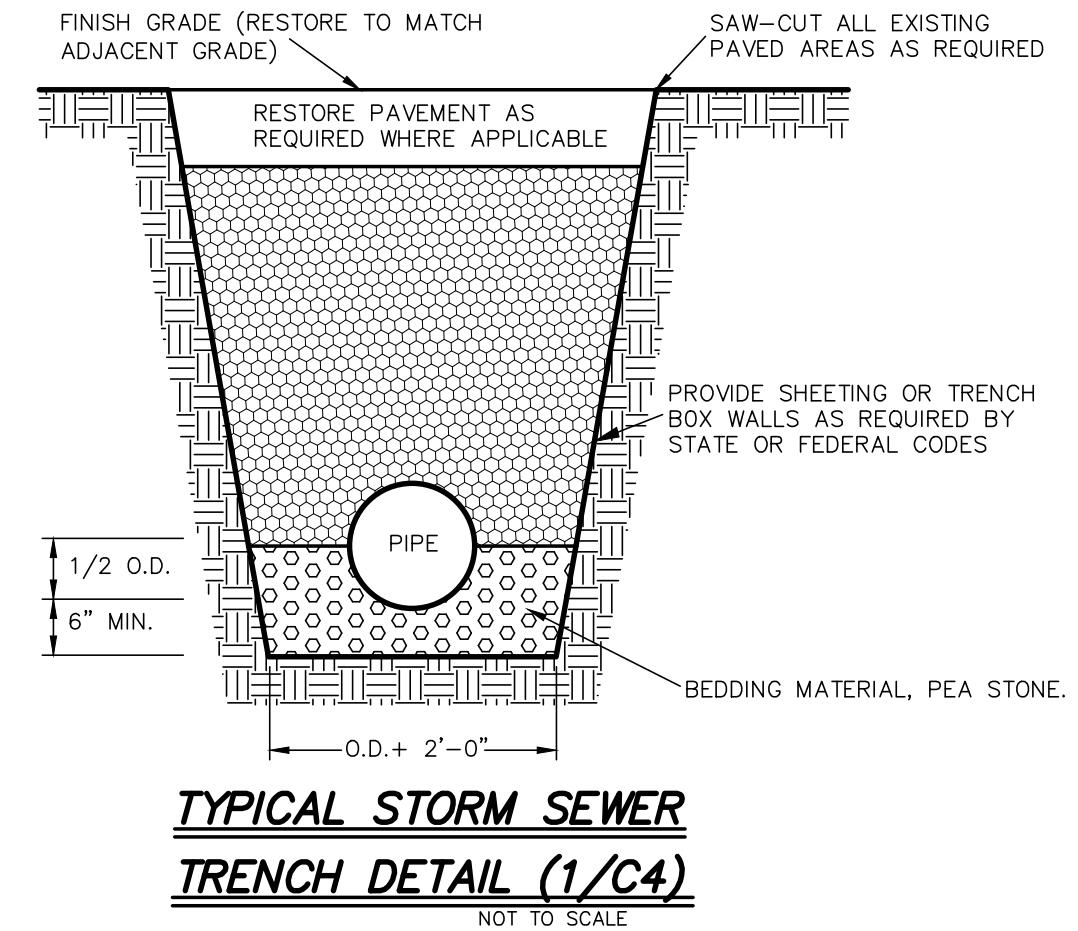
LEGEND			
R.O.W.	RIGHT OF WAY	○	IRON ROD
No.	NUMBER	MH ○	MANHOLE
enc.	ENCROACHMENT	⊕	CATCHBASIN
P.O.B.	POINT OF BEGINNING	—	SIGN
S.F.	SQUARE FEET	—X—	FENCE LINE
N/F	NOW OR FORMERLY	—○—	OVERHEAD WIRE, UTILITY POLE & GUY WIRE
N	NORTH	↔	TRAFFIC FLOW ACCESS AREA
S	SOUTH	⊗	WATER SHUT OFF
E	EAST	⊗W	WATER VALVE
W	WEST	⊗V	HYDRANT
elec.	ELECTRIC	⊗GT	GAS VALVE
L	LIBER	⊗	GAS TEST
P.	PAGE	○	STREET LIGHT
—ST—	STORM LINE	⊙	LIGHT POLE
—S—	SEWER LINE	■	CONCRETE
—W—	WATER LINE	■	PAVEMENT
—G—	GAS LINE	■	BRICK
—UE—	UNDERGROUND ELECTRIC		
—W—	PROPOSED WATER MAIN		
—S—	PROPOSED SANITARY SEWER		
—G—	PROPOSED GAS LINE		
—ST—	PROPOSED STORM SEWER		



ROOF DRAIN TRIBUTARY AREA STORAGE		
ROOF DRAIN	AREA (SF)	STORAGE VOLUME (CF)
ROOF DRAIN 1	831	449
ROOF DRAIN 2	1,056	570
ROOF DRAIN 3	724	391
ROOF DRAIN 4	1,144	618
TOTAL	3,755	2028

NOTES

1. EXISTING WATER AND SEWER LATERALS TO BE USED. THERE ARE NO NEW PROPOSED WATER OR SEWER SERVICES.



HERSHBERG & HERSHBERG
Consulting Engineers and Land Surveyors
18 Locust Street
Albany, New York 12203

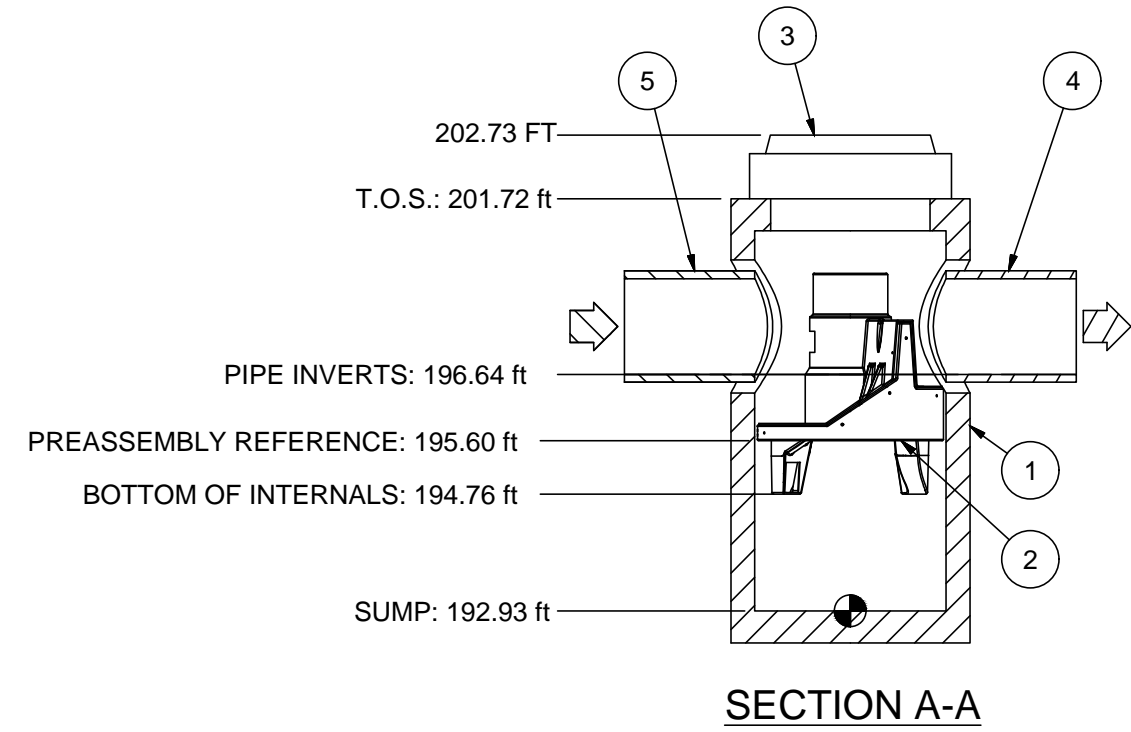
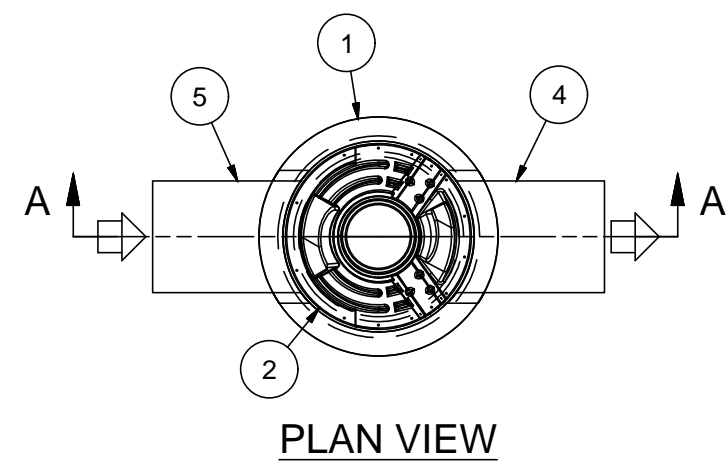
ALTERATION OF THIS DOCUMENT EXCEPT BY A LICENSED PROFESSIONAL ENGINEER OR LAND SURVEYOR, IS ILLEGAL.

DATE	REVISIONS
7/27/2020	GENERAL REVISIONS
8/17/2021	RESPONSE REVISIONS
11/09/2021	COVERAGE STAT

UTILITY PLAN AND DETAILS FOR
 185 HENRY JOHNSON BOULEVARD
 CITY OF ALBANY
 STATE OF NEW YORK

FILE: 200140
 SCALE: AS NOTED
 BY: MAB
 CHECK: DRH
 DATE: 7/22/20
 200140.DWG

C4 OF 9



HYDRO FRAME AND COVER (INCLUDED)
GRADE RINGS BY OTHERS AS REQUIRED

PRODUCT SPECIFICATION:

1. PEAK HYDRAULIC FLOW: 15.0 cfs (424 l/s)
2. MIN SEDIMENT STORAGE CAPACITY: 0.4 cu. yd. (0.3 cu. m.)
3. OIL STORAGE CAPACITY: 125 gal. (473 liters)
4. MAXIMUM INLET/OUTLET PIPE DIAMETERS: 18 in. (450 mm)
5. THE TREATMENT SYSTEM SHALL USE AN INDUCED VORTEX TO SEPARATE POLLUTANTS FROM STORMWATER RUNOFF.
6. FOR MORE PRODUCT INFORMATION INCLUDING REGULATORY ACCEPTANCES, PLEASE VISIT <https://hydro-int.com/en/products/first-defense>

GENERAL NOTES:

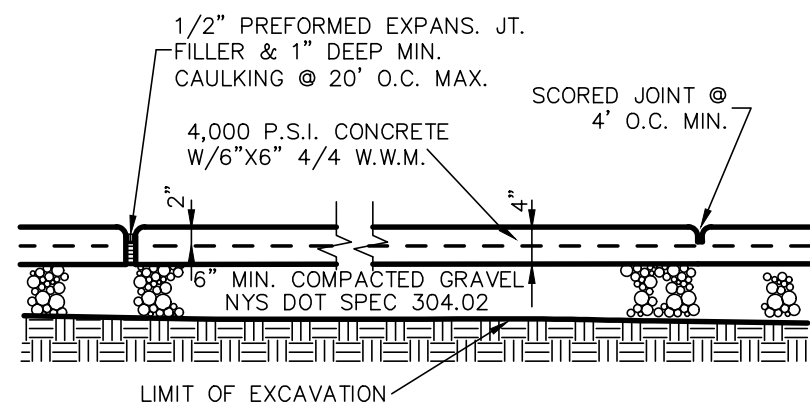
1. General Arrangement drawings only. Contact Hydro International for site specific drawings.
2. The diameter of the inlet and outlet pipes may be no more than 18".
3. Multiple inlet pipes possible (refer to project plan).
4. Inlet/outlet pipe angle can vary to align with drainage network (refer to project plan.s)
5. Peak flow rate and minimum height limited by available cover and pipe diameter.
6. Larger sediment storage capacity may be provided with a deeper sump depth.

ANY WARRANTY GIVEN BY HYDRO INTERNATIONAL WILL APPLY ONLY TO THOSE ITEMS SUPPLIED BY IT. ACCORDINGLY HYDRO INTERNATIONAL CANNOT ACCEPT ANY RESPONSIBILITY FOR ANY STRUCTURE, PLANT, OR EQUIPMENT, OR THE PERFORMANCE THEREOF, DESIGNED, BUILT, MANUFACTURED, OR SUPPLIED BY ANY THIRD PARTY. HYDRO INTERNATIONAL HAS A POLICY OF CONTINUOUS DEVELOPMENT AND RESERVE THE RIGHT TO AMEND THE SPECIFICATION. HYDRO INTERNATIONAL CANNOT ACCEPT LIABILITY FOR PERFORMANCE OF ITS EQUIPMENT (OR ANY PART THEREOF), IF THE EQUIPMENT IS SUBJECT TO CONDITIONS OUTSIDE ANY DESIGN SPECIFICATION. HYDRO INTERNATIONAL OWNS THE COPYRIGHT OF THIS DRAWING, WHICH IS SUPPLIED IN CONFIDENCE. IT MUST NOT BE USED FOR ANY PURPOSE OTHER THAN THAT FOR WHICH IT IS SUPPLIED AND MUST NOT BE REPRODUCED, IN WHOLE OR IN PART, WITHOUT PRIOR PERMISSION IN WRITING FROM HYDRO INTERNATIONAL.

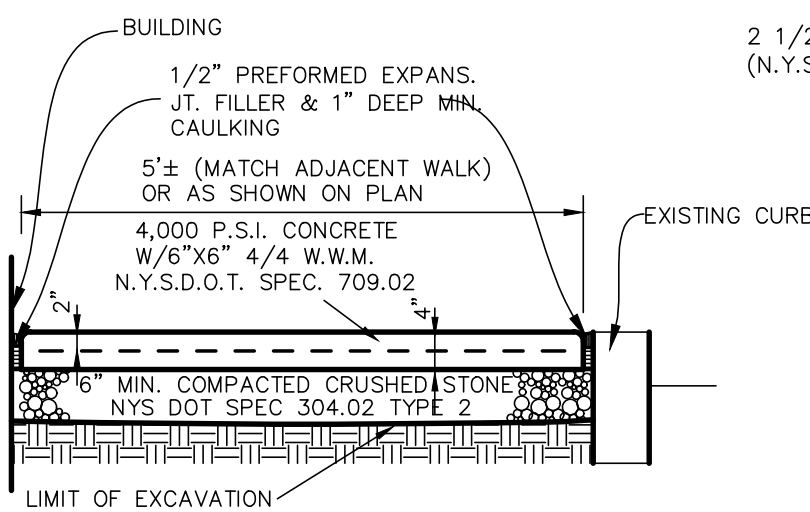
FIRST DEFENSE HYDRODYNAMIC SEPARATOR DETAIL (1/C5)
NOT TO SCALE

PARTS LIST				
ITEM	QTY	SIZE (in)	SIZE (mm)	DESCRIPTION
1	1	36	900	I.D. PRECAST MANHOLE
2	1			INTERNAL COMPONENTS (PRE-INSTALLED)
3	1	30	750	FRAME AND COVER (ROUND)
4	1	18 (MAX)	450 (MAX)	OUTLET PIPE (BY OTHERS)
5	1	18 (MAX)	450 (MAX)	INLET PIPE (BY OTHERS)

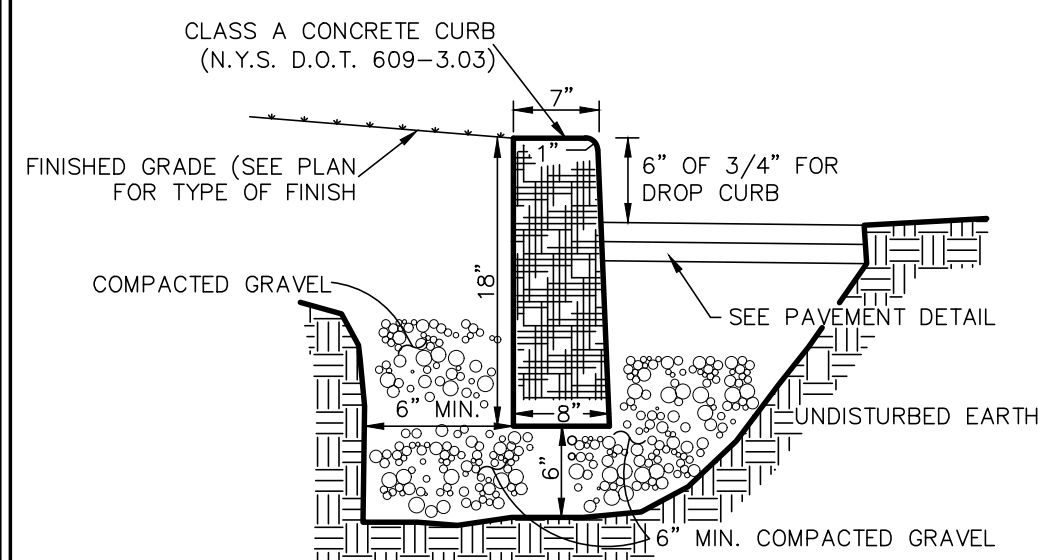
- NOTES:**
1. SIDEWALK SLOPE FROM BUILDING WALL TO CURB TO BE 1/8" PER FOOT
 2. SIDEWALK FINISH TO BE MAGNESIUM FLOAT FINISH
 3. CONCRETE WALK TO CONFORM TO CITY OF ALBANY ENGINEERING SPECIFICATIONS
 4. CONCRETE USED SHALL HAVE AN AIR CONTENT OF 5% MIN. TO 7% MAX. AND A SLUMP OF THREE INCHES MIN. TO FIVE INCHES MAX.
 5. ALL CONCRETE SIDEWALK REPLACEMENT SHALL BE TO FULL PANEL LIMITS. PARTIAL REPLACEMENTS WILL NOT BE ALLOWED.
 6. EXPANSION JOINTS TO BE PLACED BETWEEN ADJACENT SLABS, AT BUILDING LINE OR PENETRATING STRUCTURES.
 7. ALL CURBING SHALL BE RESET OR REPLACED AS REQUIRED IN ACCORDANCE WITH CITY DETAILS.



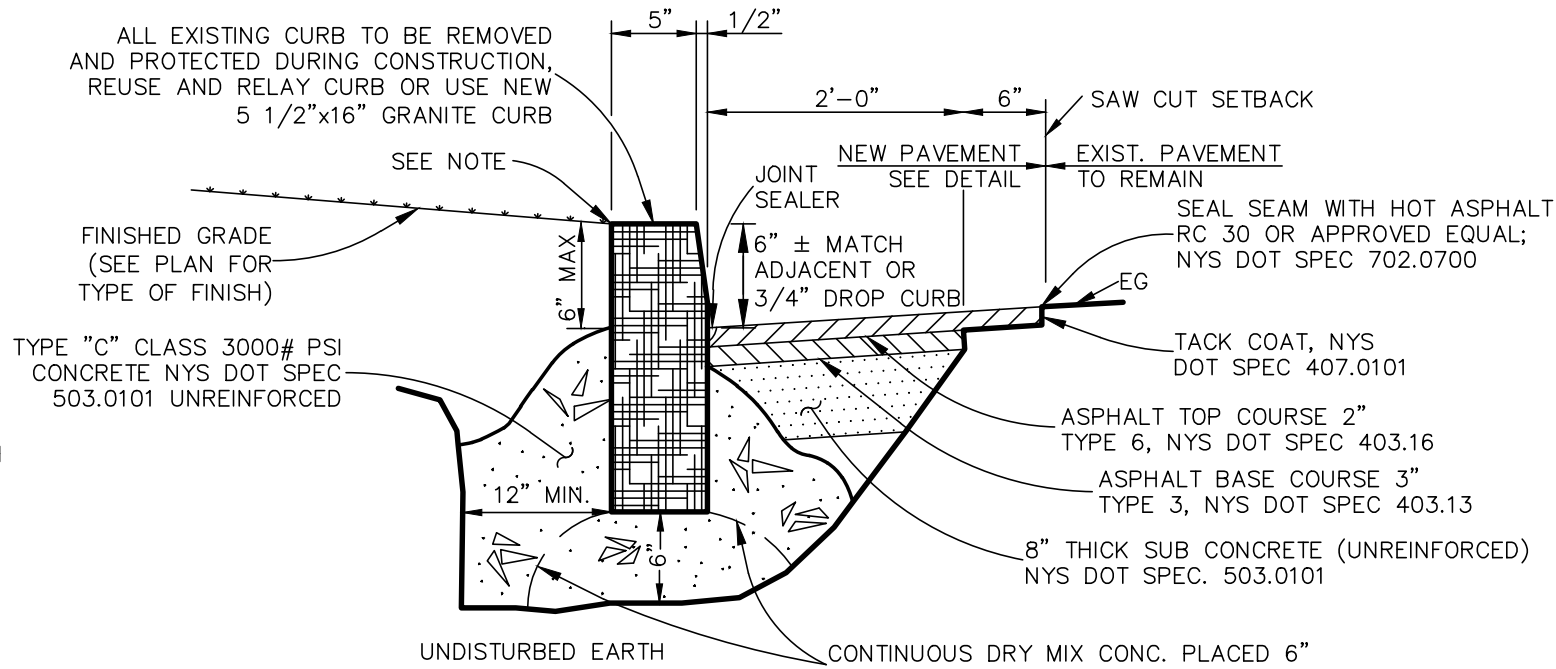
LONGITUDINAL SECTION CONCRETE WALK REPAIR DETAIL IN CITY R.O.W. (3/C5)
NOT TO SCALE



CROSS SECTION CONCRETE WALK REPAIR DETAIL IN CITY R.O.W. (3/C5)
NOT TO SCALE



CONCRETE CURB (CAST IN PLACE) DETAIL (6/C5)
NOT TO SCALE



NEW OR RELAY CURB DETAIL (CITY R.O.W.) (5/C5)
NOT TO SCALE

PROJECTION

IF IN DOUBT ASK

COMMENTS:

1. MANHOLE WALL AND SLAB THICKNESSES ARE NOT TO SCALE.
2. CONTACT HYDRO INTERNATIONAL FOR A BOTTOM OF STRUCTURE ELEVATION PRIOR TO SETTING FIRST DEFENSE MANHOLE.
3. CONTRACTOR TO CONFIRM RIM, PIPE INVERTS, PIPE DIA. AND PIPE ORIENTATION PRIOR TO RELEASE OF UNIT TO FABRICATION.

DATE: 11/8/2019 SCALE: NTS

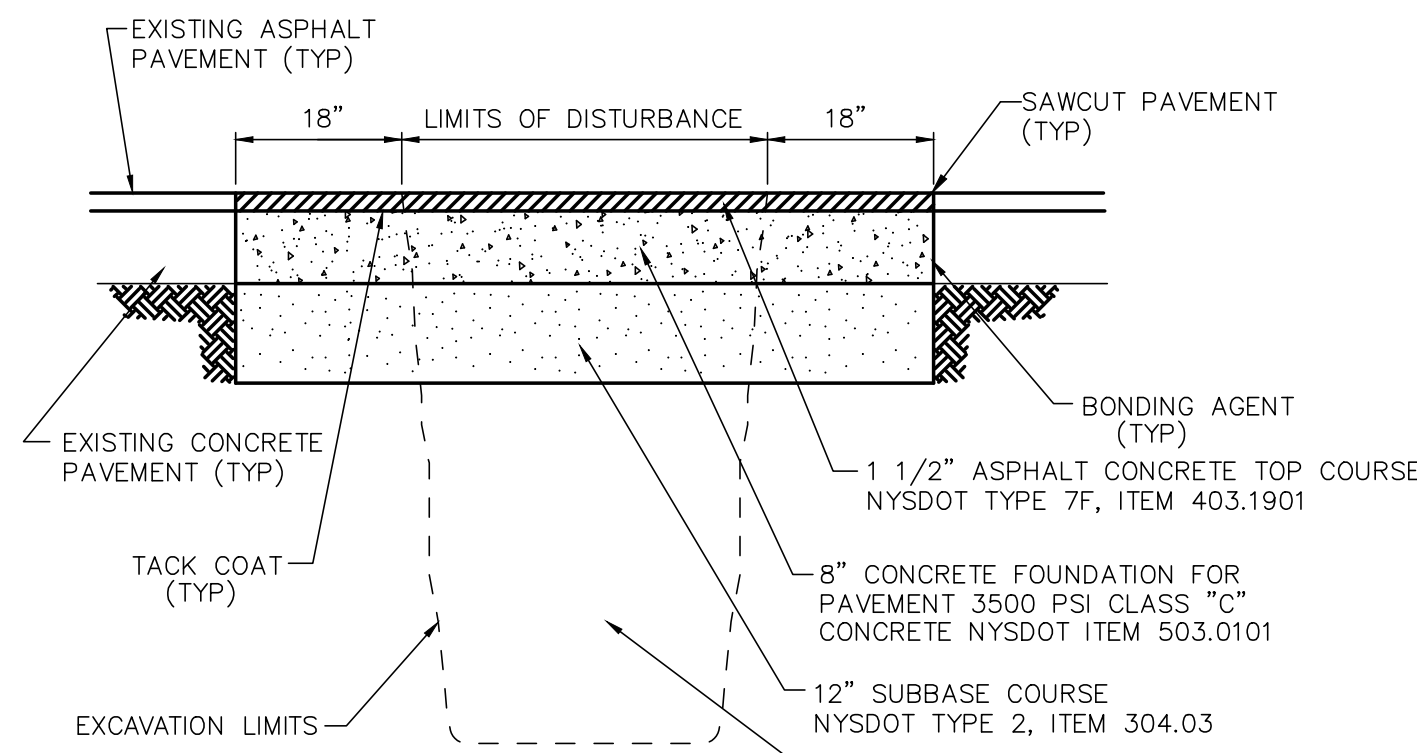
DRAWN BY: JLL3 CHECKED BY: APPROVED BY:

3/4" DIAMETER

FIRST DEFENSE HIGH CAPACITY

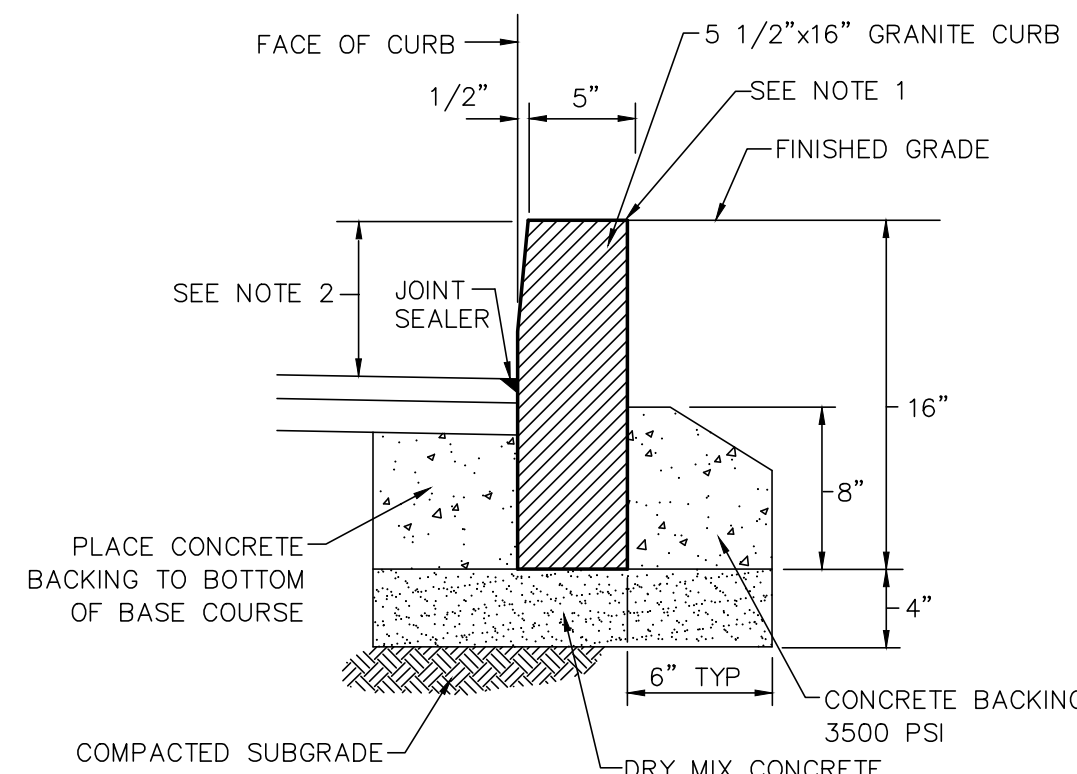
GENERAL ARRANGEMENT

Hydro International
hydro-int.com
HYDRO INTERNATIONAL



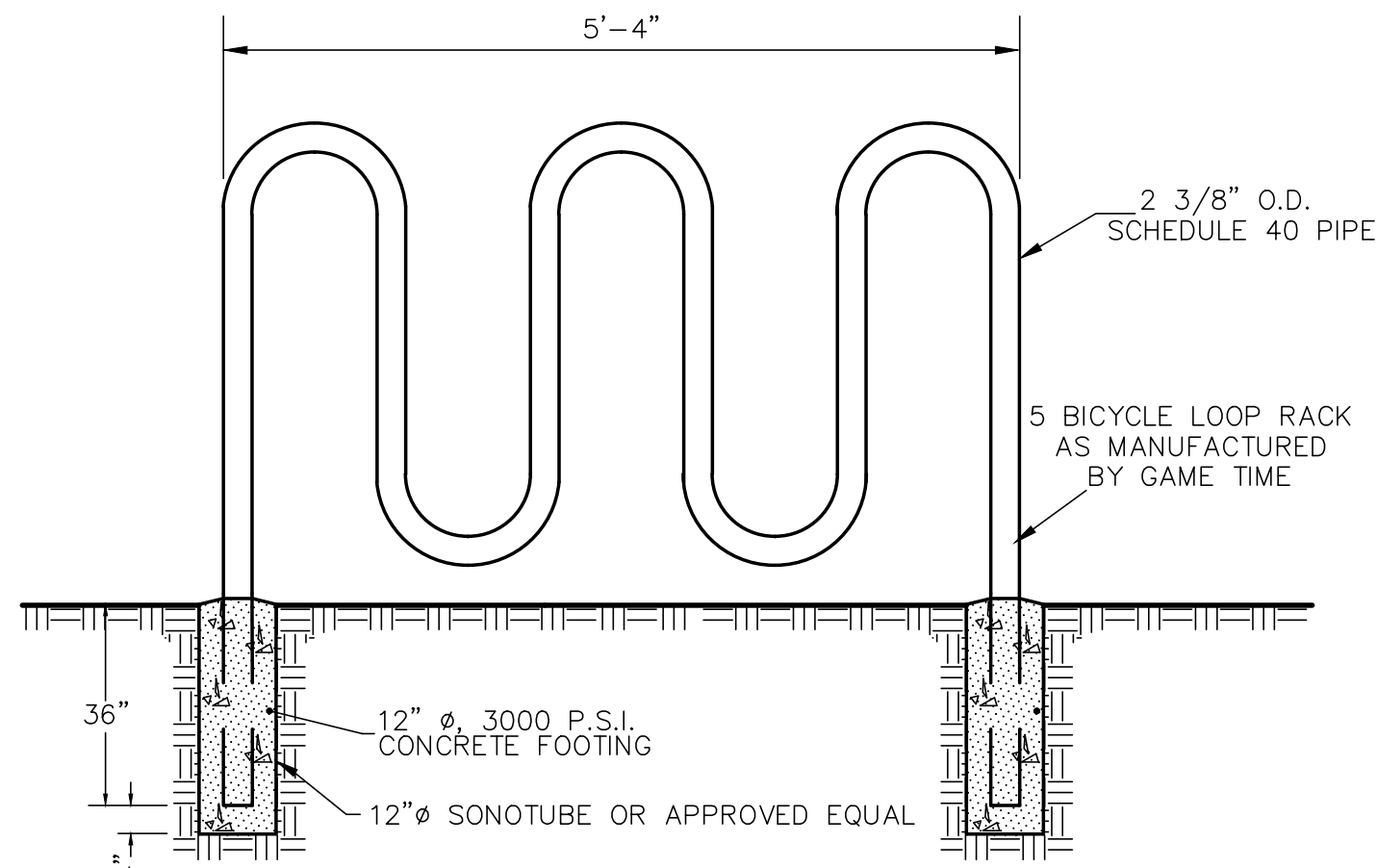
- NOTE:**
1. IF LIMITS OF TRENCHING EXCEEDS 50 FEET, CONTRACTOR SPECIFICATIONS SHALL COMPLETE CURB TO CURB MILLING PER CITY DETAILS
 2. ALL PAVEMENT MARKINGS DISTURBED SHALL BE RESTORED TO THE SATISFACTION OF THE CITY
 3. ALL JOINTS TO BE SEALED WITH ASPHALT EMULSION (AC-20) NYSDOT ITEM 702-0500

STREET RESTORATION CONCRETE PAVEMENT DETAIL (CITY R.O.W.) (2/C5)
NOT TO SCALE

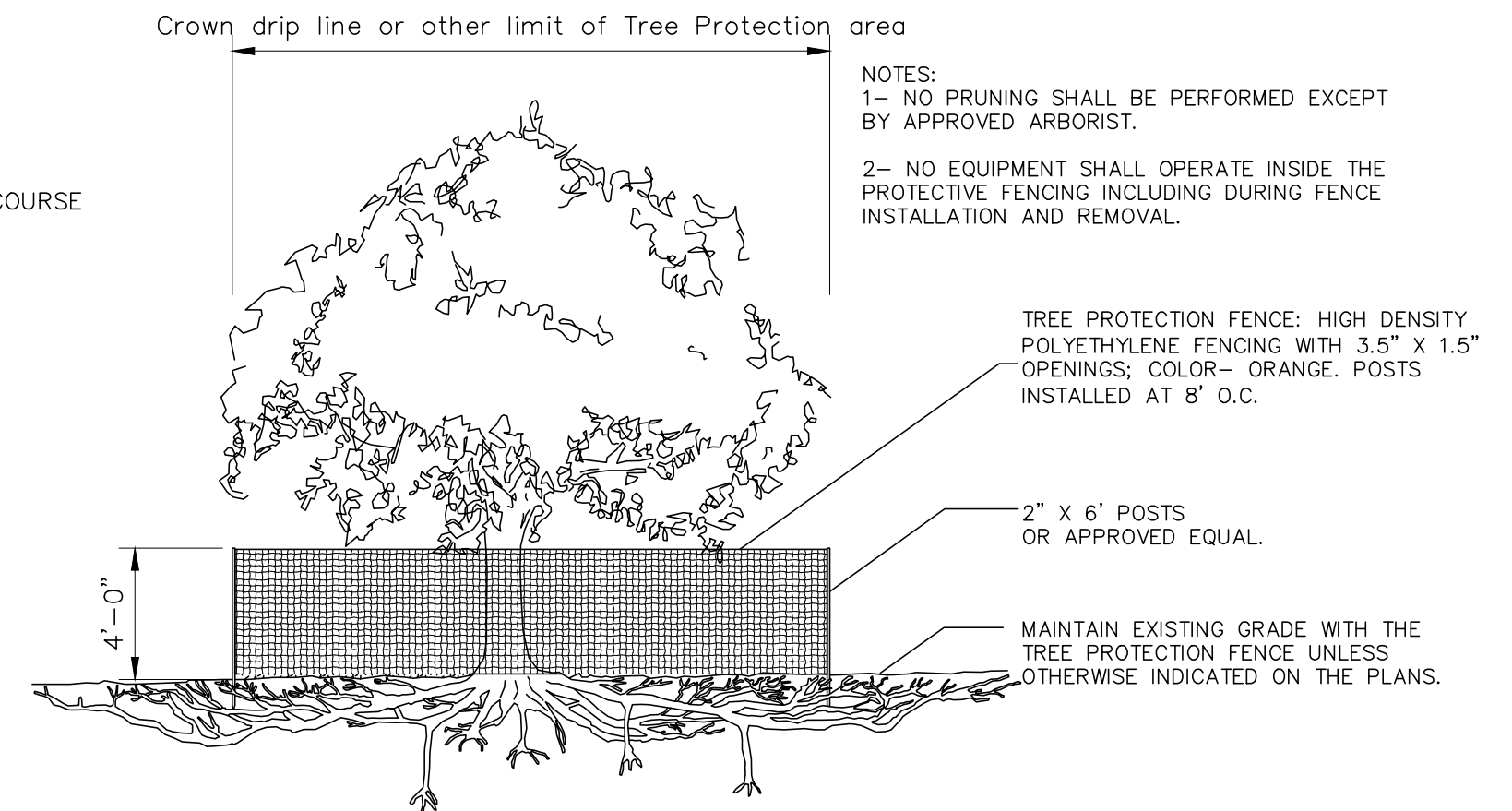


- NOTE:**
1. EXPANSION JOINT MATERIAL SHALL BE INSTALLED WHEN CURB IS SET AGAINST NEW OR EXISTING SIDEWALK AS ORDERED BY THE ENGINEER.
 2. FOR NEW CONSTRUCTION, A 6" CURB REVEAL SHALL BE MAINTAINED, FOR CURB REPLACEMENT OR RESETING, MATCH EXISTING REVEAL

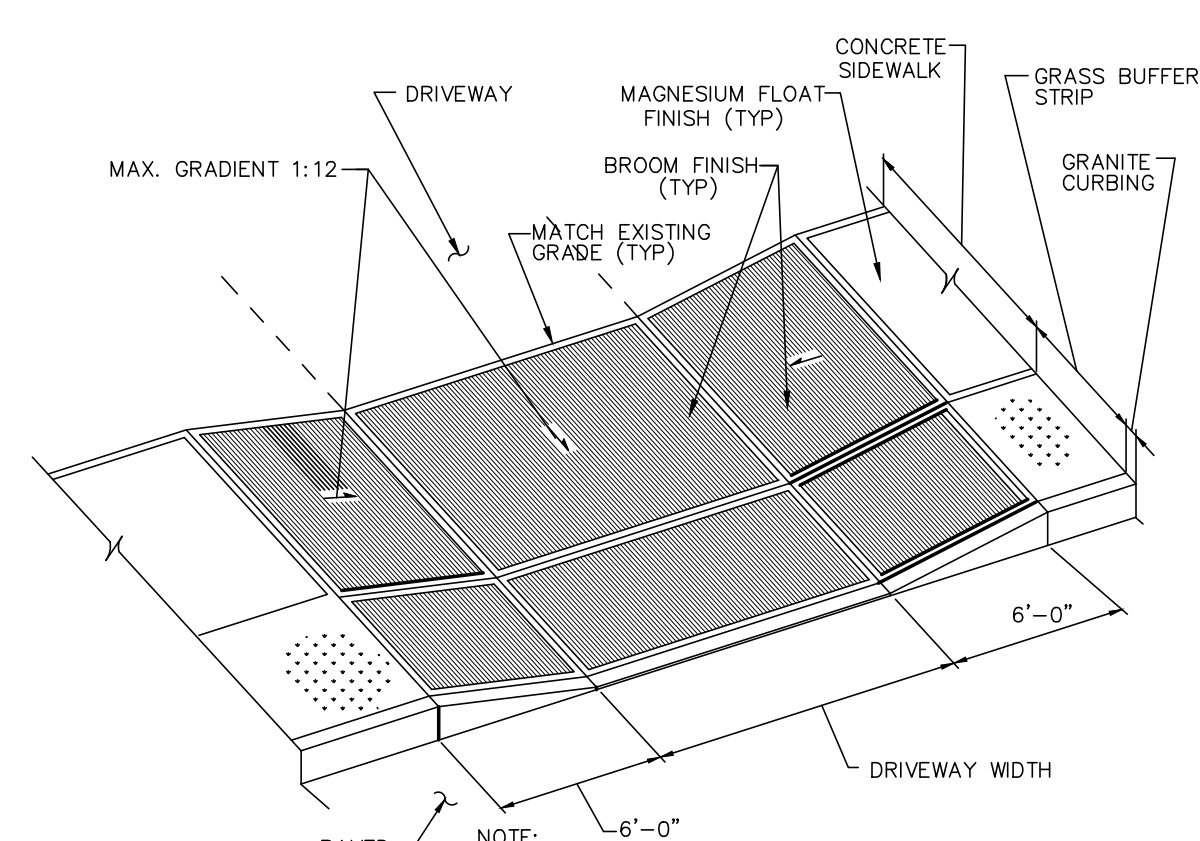
GRANITE CURB INSTALLATION DETAIL (8/C5)
NOT TO SCALE



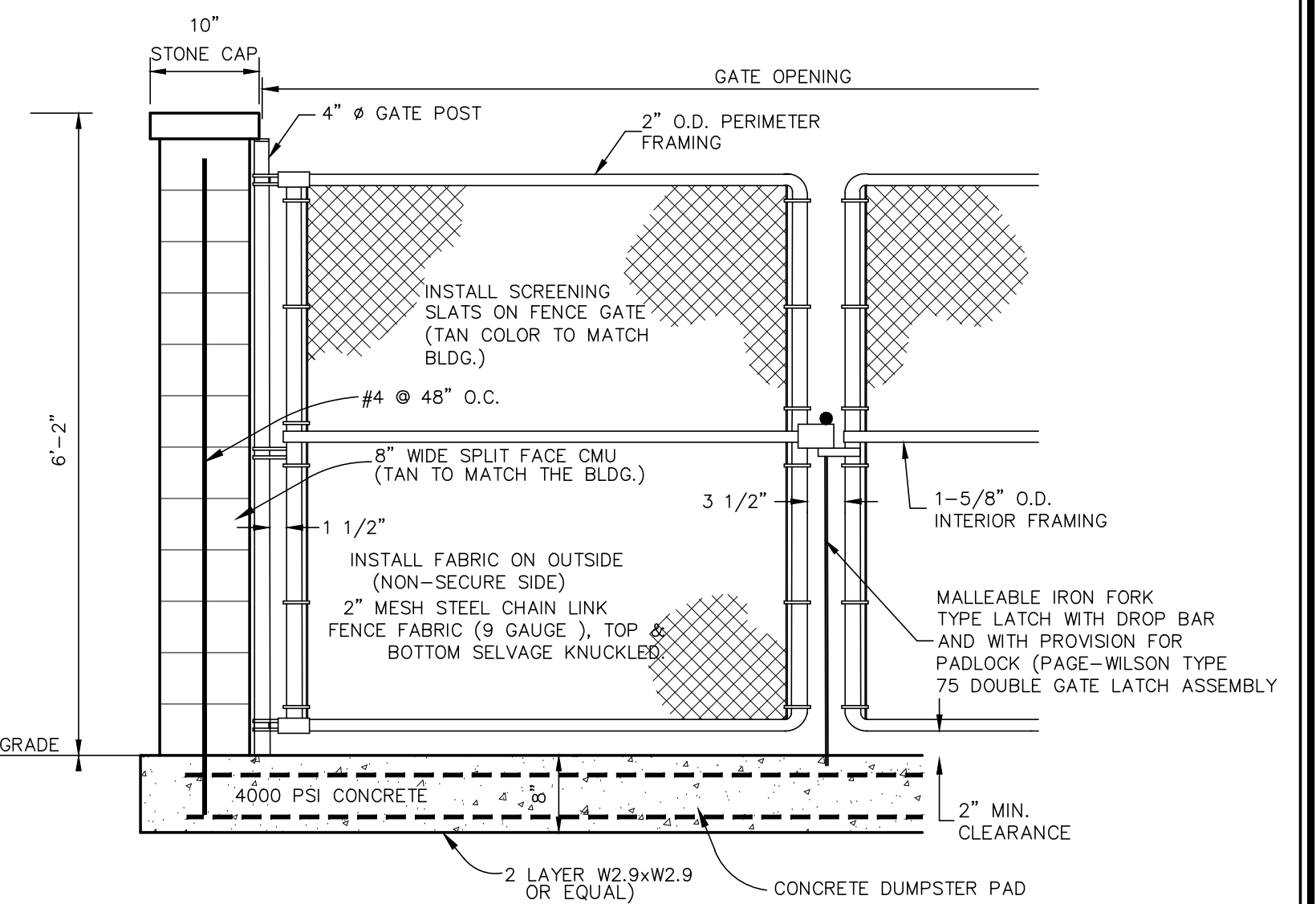
BICYCLE LOOP RACK DETAIL (10/C5)
NOT TO SCALE



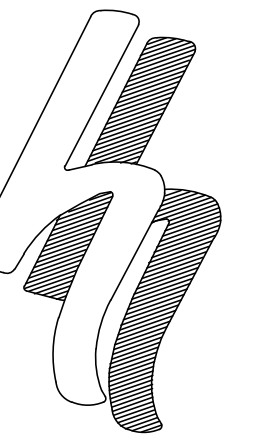
TREE PROTECTION DETAIL (7/C5)
NOT TO SCALE



DRIVEWAY/SIDEWALK DROP CURB WITH BUFFER STRIP DETAIL (9/C5)
NOT TO SCALE



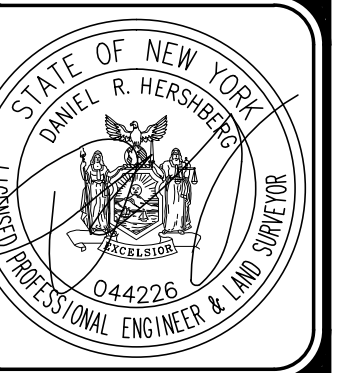
DUMPSTER ENCLOSURE & GATE DETAIL (11/C5)
NOT TO SCALE



HERSHBERG & HERSHBERG
Consulting Engineers and Land Surveyors

18 Locust Street
Albany, New York 12203

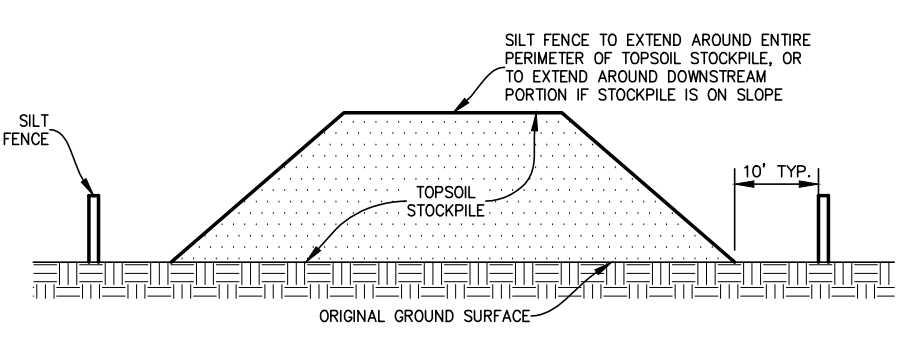
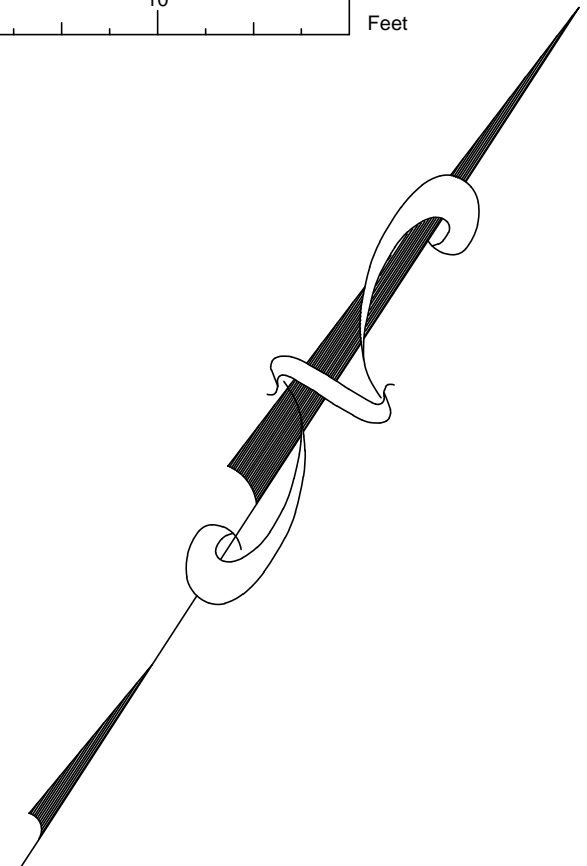
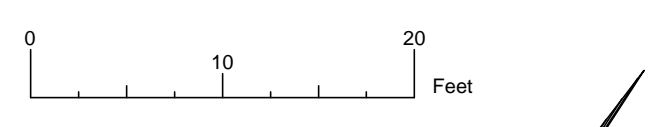
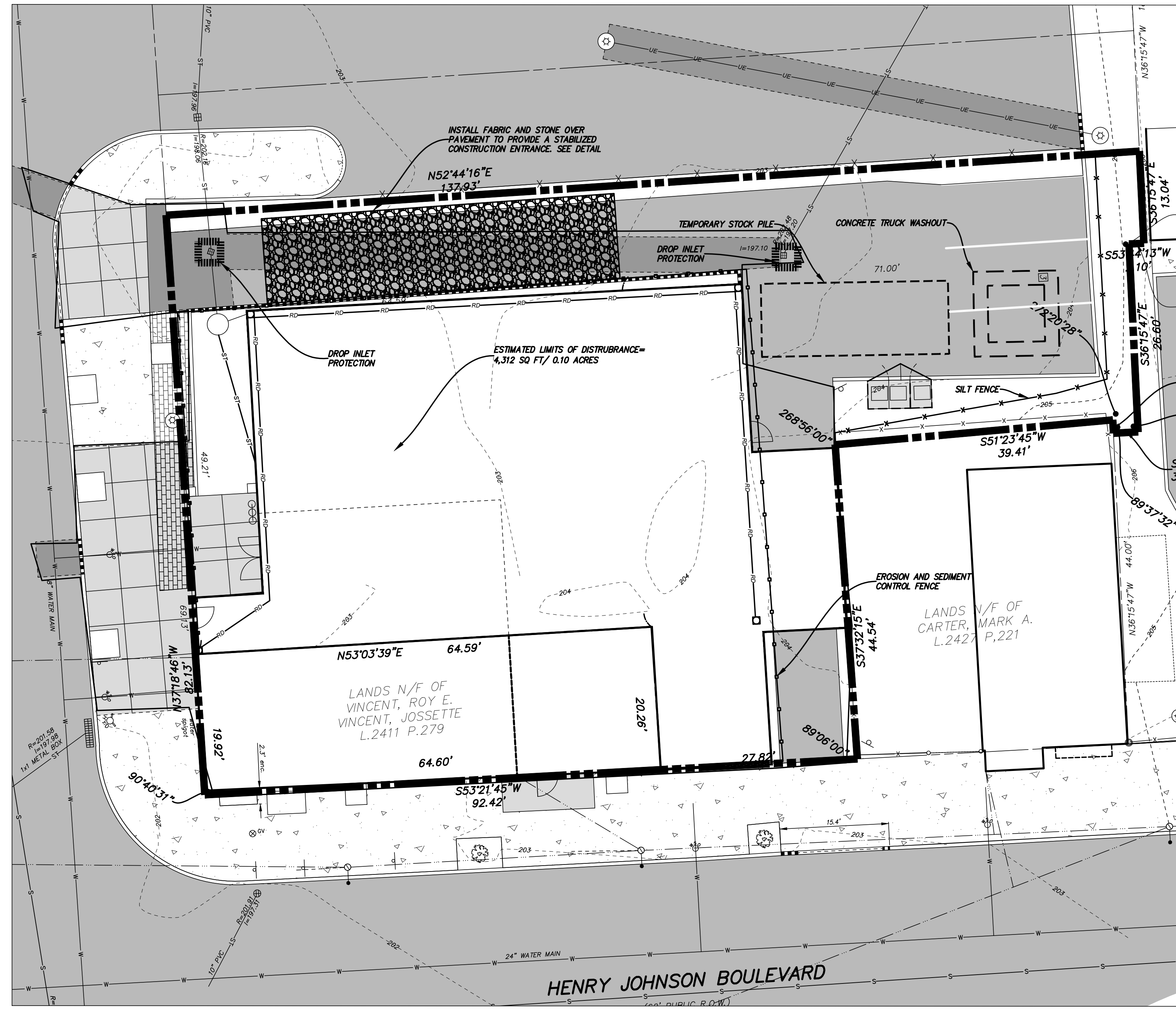
ALTERATION OF THIS DOCUMENT EXCEPT BY A LICENSED PROFESSIONAL ENGINEER OR LAND SURVEYOR, IS ILLEGAL



DATE	REVISIONS
7/27/2020	GENERAL REVISIONS
8/17/2020	RESPONSE REVISIONS
11/19/2021	COVERAGE STATE

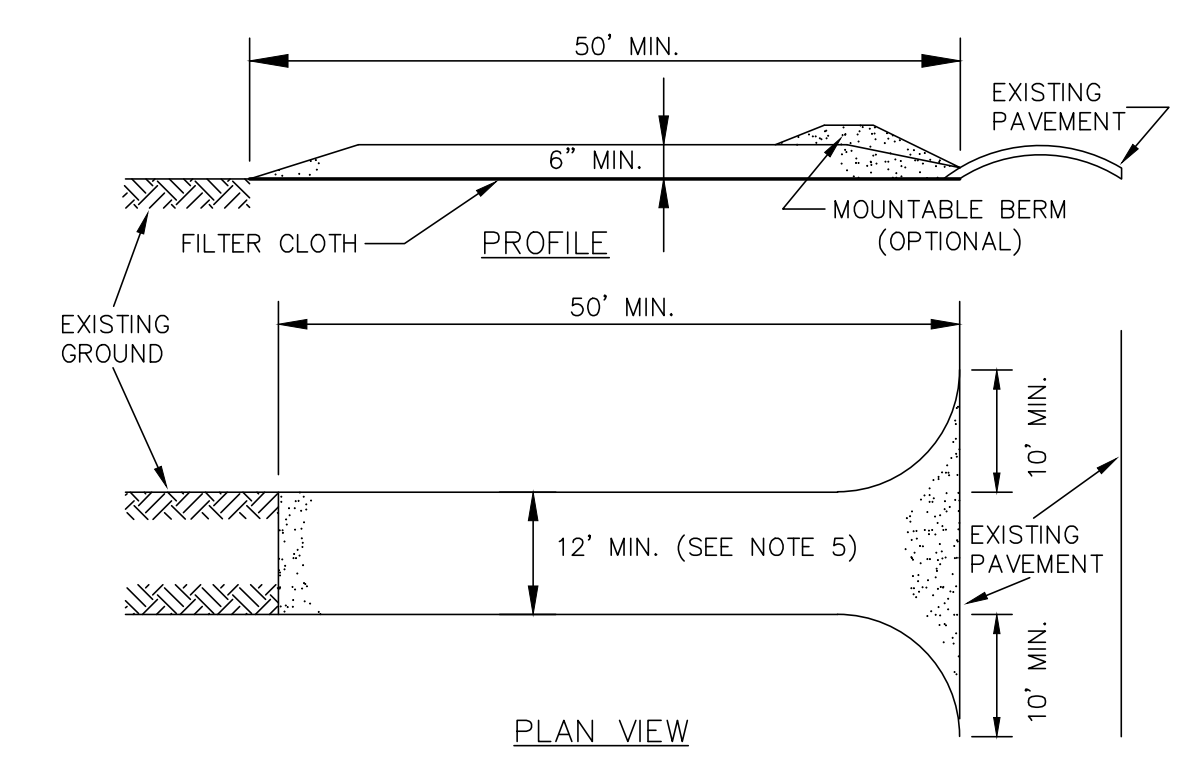
DETAILS FOR
185 HENRY JOHNSON BOULEVARD
CITY OF ALBANY
STATE OF NEW YORK

SCALE: AS NOTED
BY: MAB
CHK: DRH
DATE: 7/22/20
FILE: 200140



TEMPORARY TOPSOIL STOCKPILE DETAIL
NOT TO SCALE

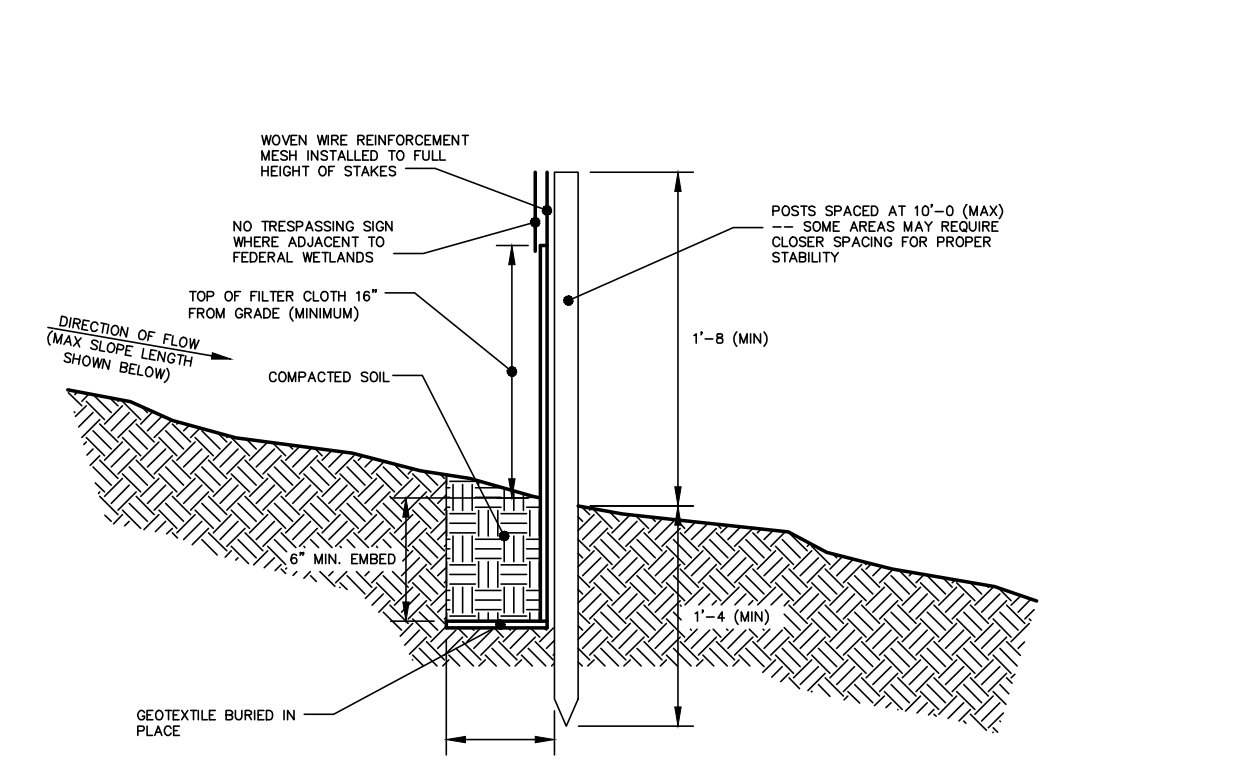
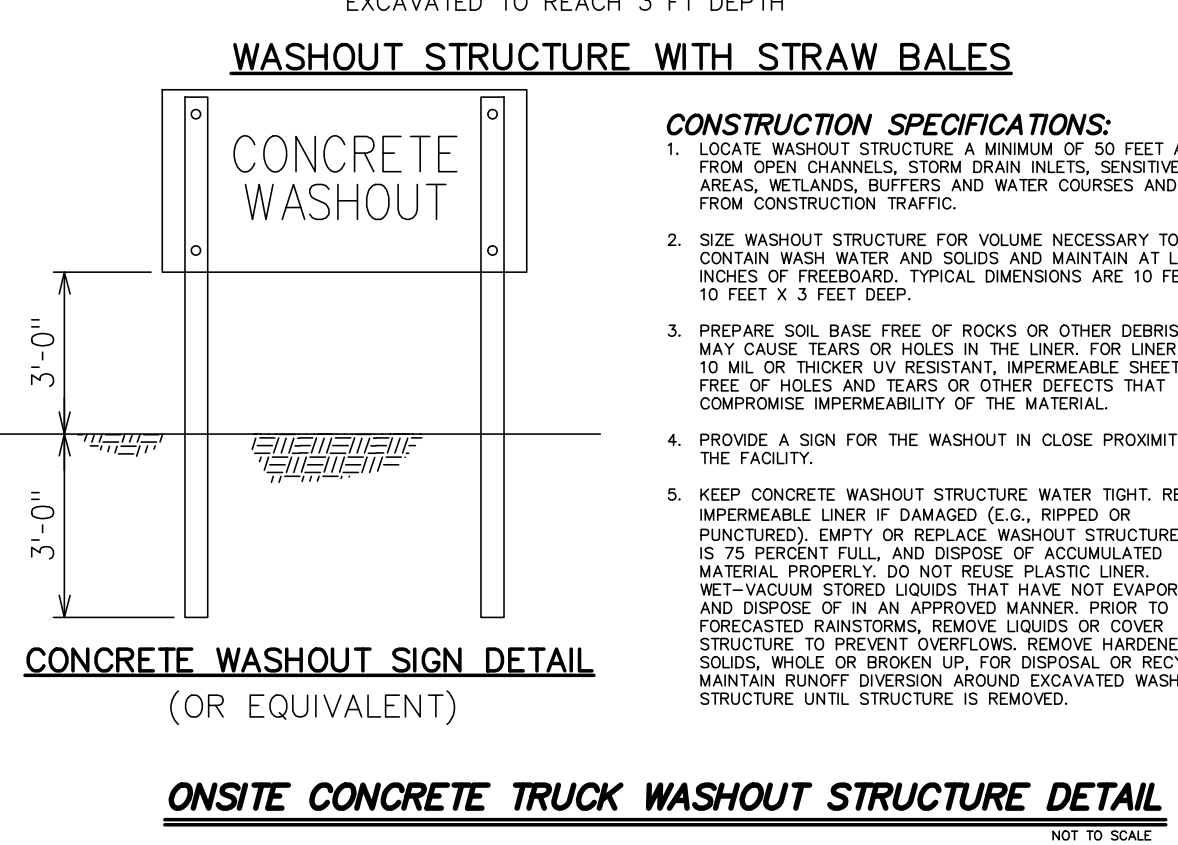
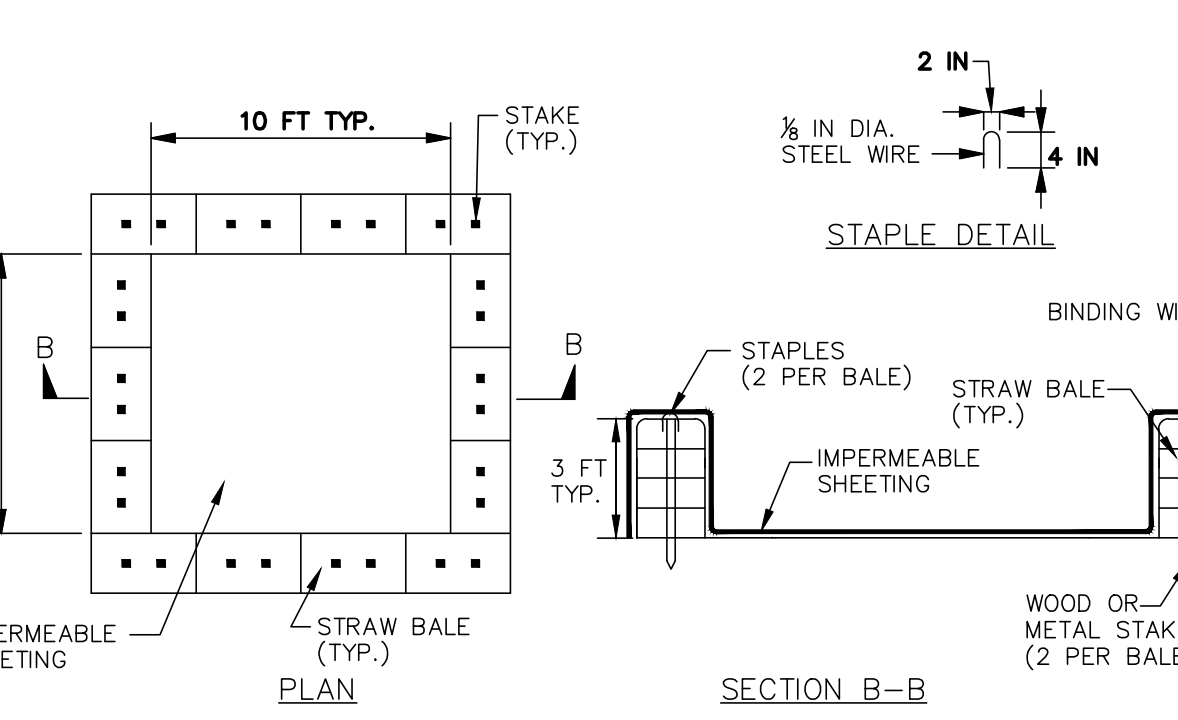
NOTES:
1. AN ON-SITE DRAINAGE SWALE SHALL BE LOCATED BETWEEN THE TOPSOIL STOCKPILE AND OFF-SITE PROPERTY.
2. REFERENCE IS MADE TO THE SILT FENCE DETAIL FOR MATERIALS AND INSTALLATION METHODS.
3. IF THE STOCKPILE IS TO REMAIN FOR MORE THAN 14 DAYS, IT SHALL BE STABILIZED WITH BURLAP MATTING OR SEEDED WITHIN 7 DAYS OF COMPLETION TO MINIMIZE EROSION.
4. INSPECTION OF SILT FENCES SHALL BE AT LEAST ONCE PER WEEK AND AFTER RAIN EVENTS IN EXCESS OF 1/2". REPAIR OR REPLACEMENT SHALL BE MADE PROMPTLY AS NEEDED.
5. SEDIMENT TRAPPED BY THE FENCES SHALL BE REMOVED AND PROPERLY DISPOSED OF WHENEVER SIGNIFICANT ACCUMULATION OCCURS.
6. SILT FENCES SHALL BE MAINTAINED IN PLACE UNTIL TOPSOIL STOCKPILE HAS BEEN ELIMINATED AND SHALL BE REMOVED ONLY WHEN DIRECTED BY THE CITY.



CONSTRUCTION SPECIFICATIONS:

- INSTALL CONSTRUCTION ACCESS IN ACCORDANCE WITH "NEW YORK STANDARDS AND SPECIFICATIONS FOR EROSION AND SEDIMENT CONTROL", SECTION 7A.
- STONE SIZE - USE 2" STONE, OR RECLAIMED OR RECYCLED CONCRETE EQUIVALENT.
- LENGTH - NOT LESS THAN 50 FEET (EXCEPT ON A SINGLE RESIDENCE LOT WHERE A 30 FOOT MINIMUM LENGTH WOULD APPLY).
- THICKNESS - NOT LESS THAN (6) INCHES.
- WIDTH - TWELVE (12) FOOT MINIMUM, BUT NOT LESS THAN THE FULL WIDTH AT POINTS WHERE INGRESS OR EGRESS OCCURS. IF CONSTRUCTED AS THE ONLY ENTRANCE TO THE SITE, WIDTH SHALL BE TWENTY-FOUR (24) FEET.
- STABILIZATION FABRIC - WILL BE PLACED OVER THE ENTIRE AREA PRIOR TO PLACING OF STONE.
- SURFACE WATER - ALL SURFACE WATER FLOWING OR DIVERTED TOWARD CONSTRUCTION ENTRANCES SHALL BE PIPED ACROSS THE ENTRANCE. IF PIPING IS IMPRACTICAL, A MOUNTABLE BERM WITH 5:1 SLOPES WILL BE PERMITTED.
- MAINTENANCE - THE ACCESS SHALL BE MAINTAINED IN A CONDITION WHICH WILL PREVENT TRACKING OR FLOWING OF SEDIMENT ONTO PUBLIC RIGHTS-OF-WAY. ALL SEDIMENT SPILLED, DROPPED, WASHED OR TRACKED ONTO PUBLIC RIGHTS-OF-WAY MUST BE REMOVED IMMEDIATELY.
- WHEN WASHING IS REQUIRED, IT SHALL BE DONE ON AN AREA STABILIZED WITH STONE AND WHICH DRAINS ONTO AN APPROVED SEDIMENT TRAPPING DEVICE.
- PERIODIC INSPECTION AND NEEDED MAINTENANCE SHALL BE PROVIDED AFTER EACH RAIN.

STABILIZED CONSTRUCTION ACCESS DETAIL
NOT TO SCALE



CONSTRUCTION SPECIFICATIONS FOR FABRICATED SILT FENCE

- INSTALL SILT FENCE IN ACCORDANCE WITH THE JULY 2016 "NEW YORK STANDARDS AND SPECIFICATIONS FOR EROSION AND SEDIMENT CONTROL".
- WOVEN WIRE FENCE TO BE FASTENED SECURELY TO FENCE POSTS WITH WIRE TIES OR STAPLES. POSTS SHALL BE STEEL EITHER "T" OR "U" TYPE OR HARDWOOD.
- FILTER CLOTH TO BE TO BE FASTENED SECURELY TO WOVEN WIRE FENCE WITH TIES SPACED EVERY 24" AT TOP AND MID SECTION. FENCE SHALL BE WOVEN WIRE, 6" MAX. MESH OPENING.
- WHEN TWO SECTIONS OF FILTER CLOTH ADJOIN EACH OTHER THEY SHALL BE OVERLAPPED BY SIX INCHES AND FOLDED. FILTER CLOTH SHALL BE EITHER FILTER X, MIRAFI 100X, STABILINKA T140N, OR APPROVED EQUIVALENT.
- PREFABRICATED UNITS SHALL MEET THE MINIMUM REQUIREMENTS SHOWN.
- MAINTENANCE SHALL BE PERFORMED AS NEEDED AND MATERIAL REMOVED WHEN "BULGES" DEVELOP IN THE SILT FENCE.

DESIGN CRITERIA:

- DESIGN COMPUTATIONS ARE NOT REQUIRED FOR INSTALLATIONS OF 1 MONTH OR LESS. LONGER INSTALLATION PERIODS SHOULD BE DESIGNED FOR EXPECTED RUNOFF.
- ALL SILT FENCES SHALL BE PLACED AS CLOSE TO THE AREA AS POSSIBLE, BUT AT LEAST 10 FEET FROM THE TOE OF A SLOPE STEEPER THAN 3H:1V, TO ALLOW FOR MAINTENANCE AND ROLL DOWN. THE AREA BEYOND THE FENCE MUST BE UNDISTURBED OR STABILIZED.
- THE TYPE OF SILT FENCE SPECIFIED FOR EACH LOCATION ON THE PLAN SHALL NOT EXCEED THE MAXIMUM SLOPE LENGTH AND MAXIMUM FENCE LENGTH REQUIREMENTS SHOWN IN THE FOLLOWING TABLE:

Slope	Steepness	Slope Length/Fence Length (ft.)		
		Standard (SF)	Reinforced (RSF)	Super (SSF)
<2%	≤5:1	300/1500	N/A	N/A
2-10%	5:1 to 10:1	125/1000	250/2000	300/2500
10-20%	10:1 to 5:1	100/750	150/1000	200/1000
20-33%	5:1 to 3:1	60/500	60/750	100/1000
33-50%	3:1 to 2:1	40/250	40/500	100/500
>50%	>2:1	20/125	30/175	50/250

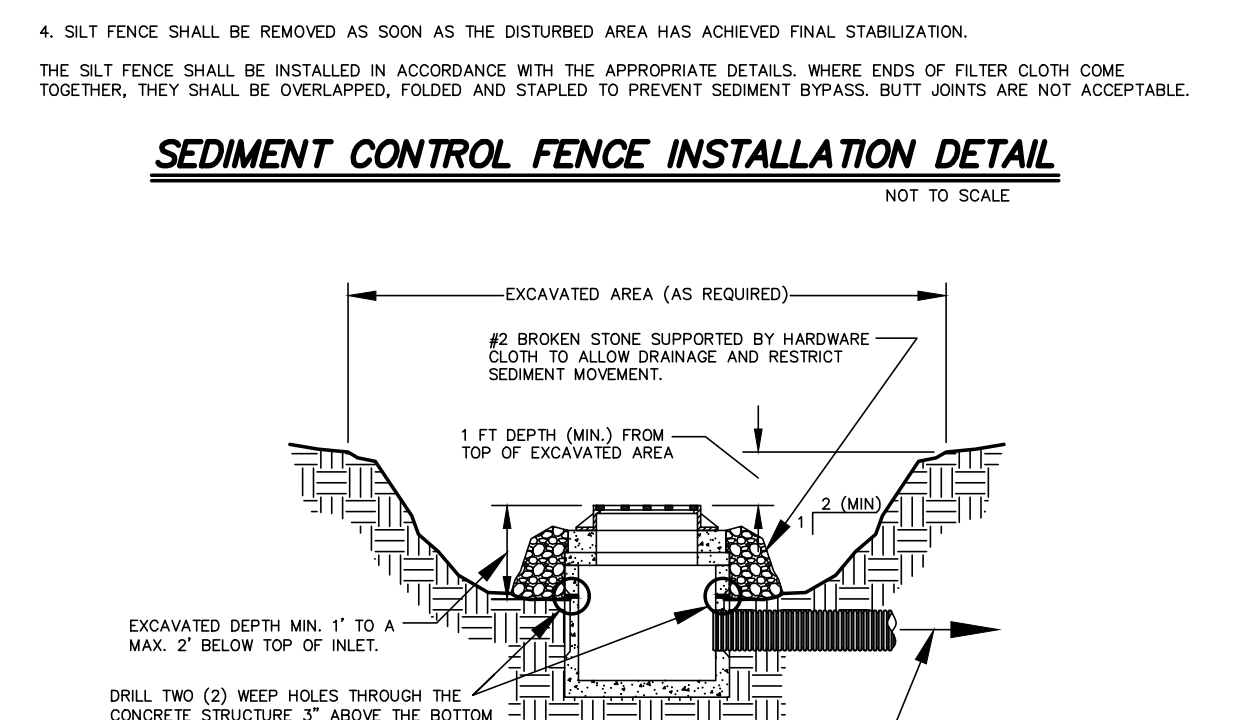
SILT FENCE JOINT DETAIL
NOT TO SCALE

1. DESIGN COMPUTATIONS ARE NOT REQUIRED FOR INSTALLATIONS OF 1 MONTH OR LESS. LONGER INSTALLATION PERIODS SHOULD BE DESIGNED FOR EXPECTED RUNOFF.

2. ALL SILT FENCES SHALL BE PLACED AS CLOSE TO THE AREA AS POSSIBLE, BUT AT LEAST 10 FEET FROM THE TOE OF A SLOPE STEEPER THAN 3H:1V, TO ALLOW FOR MAINTENANCE AND ROLL DOWN. THE AREA BEYOND THE FENCE MUST BE UNDISTURBED OR STABILIZED.

3. THE TYPE OF SILT FENCE SPECIFIED FOR EACH LOCATION ON THE PLAN SHALL NOT EXCEED THE MAXIMUM SLOPE LENGTH AND MAXIMUM FENCE LENGTH REQUIREMENTS SHOWN IN THE FOLLOWING TABLE:

SEDIMENT CONTROL FENCE INSTALLATION DETAIL
NOT TO SCALE



CONSTRUCTION SPECIFICATIONS:

- INSTALL INLET PROTECTION IN ACCORDANCE WITH THE JULY 2016 "NEW YORK STANDARDS AND SPECIFICATIONS FOR EROSION AND SEDIMENT CONTROL".
- CLEAR THE AREA OF ALL DEBRIS THAT WILL HINDER EXCAVATION.
- GRADE APPROACH TO THE INLET UNIFORMLY AROUND THE BASIN.
- WEEP HOLES SHALL BE PROTECTED BY 2" STONE OR GRAVEL.
- UPON STABILIZATION OF CONTRIBUTING DRAINAGE AREA, SEAL WEEP HOLES, FILL EXCAVATION WITH STABLE SOIL TO FINAL GRADE, COMPACT IT PROPERLY AND STABILIZE WITH PERMANENT SEEDING.
- THE MAXIMUM DRAINAGE AREA SHALL BE 1 ACRE.

DESIGN CRITERIA:

LIMIT THE DRAINAGE AREA TO THE INLET DEVICE TO ONE (1) ACRE. EXCAVATED SIDE SLOPES SHALL BE NO STEEPER THAN 2:1. THE MINIMUM DEPTH SHALL BE 1 FOOT AND THE MAXIMUM DEPTH 2 FEET AS MEASURED FROM THE CREST OF THE INLET STRUCTURE. SHAPE THE EXCAVATED BASIN TO FIT CONDITIONS WITH THE LONGEST DIMENSION ORIENTED TOWARD THE LONGEST INFLOW AREA TO PROVIDE MAXIMUM TRAP EFFICIENCY. THE CAPACITY OF THE EXCAVATED BASIN SHOULD BE ESTABLISHED TO CONTAIN 900 CUBIC FEET PER ACRE OF DISTURBED AREA. WEEP HOLES, PROTECTED BY FABRIC AND STONE, SHOULD BE PROVIDED FOR DRAINING THE TEMPORARY POOL.

INSPECT AND CLEAN THE EXCAVATED BASIN AFTER EVERY STORM. SEDIMENT SHOULD BE REMOVED WHEN 50 PERCENT OF THE STORAGE VOLUME IS ACHIEVED. THIS MATERIAL SHOULD BE INCORPORATED INTO THE SITE IN A STABILIZED MANNER.

HERSHBERG & HERSHBERG
Consulting Engineers and Land Surveyors
18 Locust Street
Albany, New York 12203

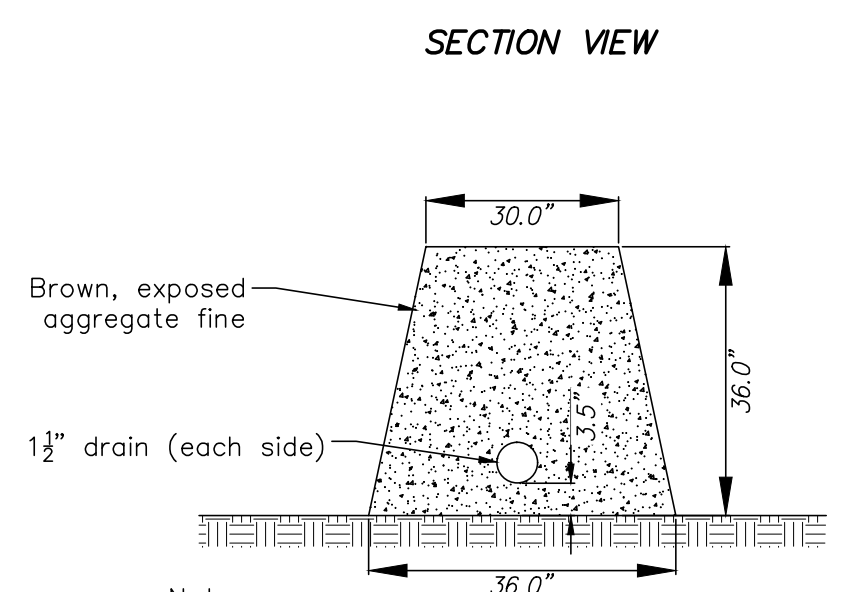
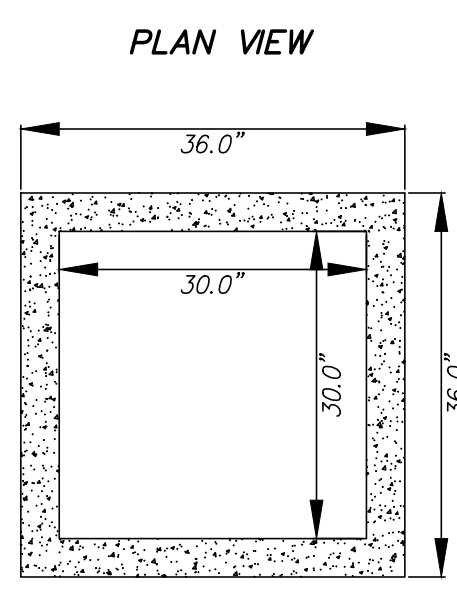
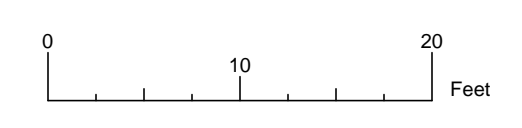
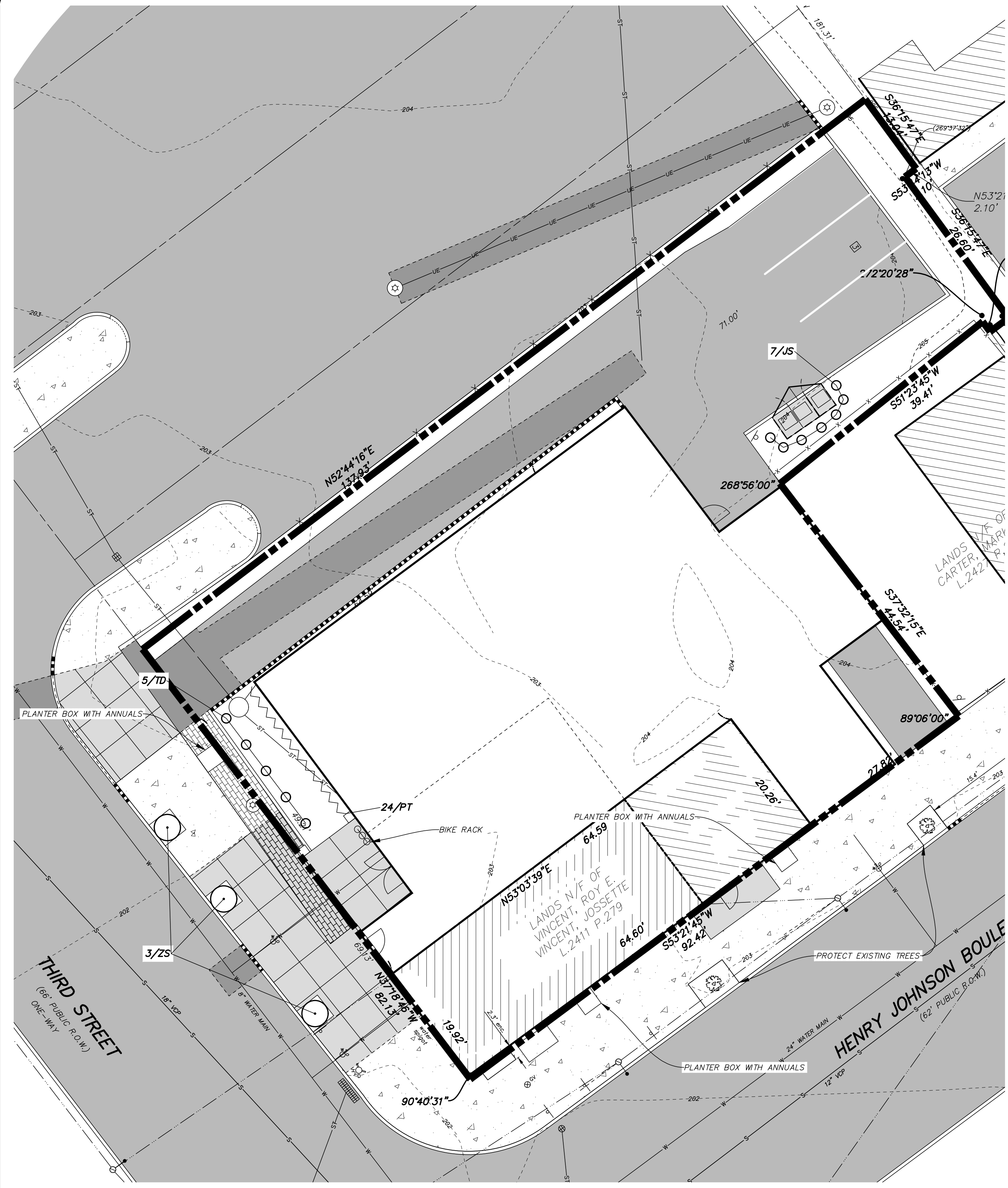
ALTERATION OF THIS DOCUMENT EXCEPT BY A LICENSED PROFESSIONAL ENGINEER OR LAND SURVEYOR, IS ILLEGAL.

REVISIONS	DATE	REMARKS
GENERAL REVISIONS	7/27/2020	
RESPONSE REVISIONS	8/17/2020	
COVERAGE STATUS	11/09/2021	

EROSION AND SEDIMENT CONTROL PLAN FOR
185 HENRY JOHNSON BOULEVARD
CITY OF ALBANY
STATE OF NEW YORK

SCALE: AS NOTED
DATE: 7/22/20
CHKD: DRH
BY: MAB
FILE: 200140

C6 OF 9

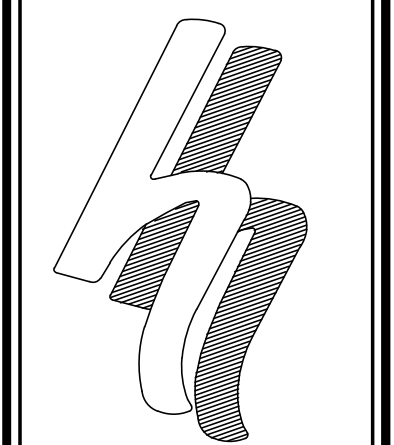


PLANTER BOX DETAIL
NOT TO SCALE

LEGEND

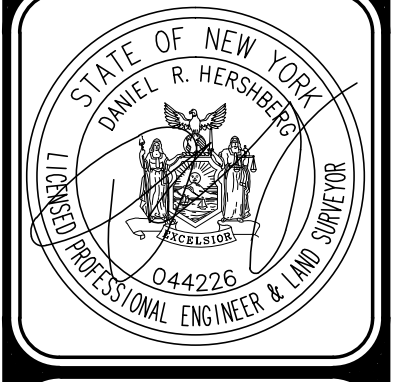
R.O.W.	RIGHT OF WAY	○	IRON ROD
No.	NUMBER	MH ○	MANHOLE
enc.	ENCROACHMENT	⊕	CATCHBASIN
P.O.B.	POINT OF BEGINNING	⊕	SIGN
S.F.	SQUARE FEET	—X—	FENCE LINE
N/F	NOW OR FORMERLY	—○—	OVERHEAD WIRE, UTILITY POLE & GUY WIRE
N	NORTH	↔	TRAFFIC FLOW ACCESS AREA
S	SOUTH	⊕	WATER SHUT OFF
E	EAST	⊕	WATER VALVE
W	WEST	⊕	HYDRANT
elec.	ELECTRIC	⊕	GAS VALVE
L	LIBER	⊕	GAS TEST
P	PAGE	○	STREET LIGHT
—ST—	STORM LINE	☆	LIGHT POLE
—S—	SEWER LINE		
—W—	WATER LINE		
—G—	GAS LINE		
—UE—UE—	UNDERGROUND ELECTRIC		
—W—	PROPOSED WATER MAIN		
—S—	PROPOSED SANITARY SEWER		
—G—	PROPOSED GAS LINE		
—ST—	PROPOSED STORM SEWER		
		■	CONCRETE
		■	PAVEMENT
		■	BRICK

PLANT MATERIAL SCHEDULE					
SYM	BOTANICAL NAME	COMMON NAME	SIZE	AMT	COMMENTS
TREES					
ZS	ZELKOVA SERRATA	JAPANESE ZELKOVA	2 1/2" - 3" CAL.	3	B & B
GROUND COVER					
PT	PACHYSANDRA TERMINALIS	PACHYSANDRA	2 YR. ROOTED CUTTINGS	24	CONTAINER GROWN
SHRUBS					
JS	JUNIPERUS CHINENSIS 'SPARTAN'	SPARTAN JUNIPER	6'-8" HT.	7	B & B
TD	TAXUS X MEDIA 'DENSIFORMIS'	DENSE SPREADING YEW	24" HT.	5	B & B



HERSHBERG & HERSHBERG
Consulting Engineers and Land Surveyors
18 Locust Street
Albany, New York 12203

ALTERATION OF THIS DOCUMENT EXCEPT BY A LICENSED PROFESSIONAL ENGINEER OR LAND SURVEYOR, IS ILLEGAL.



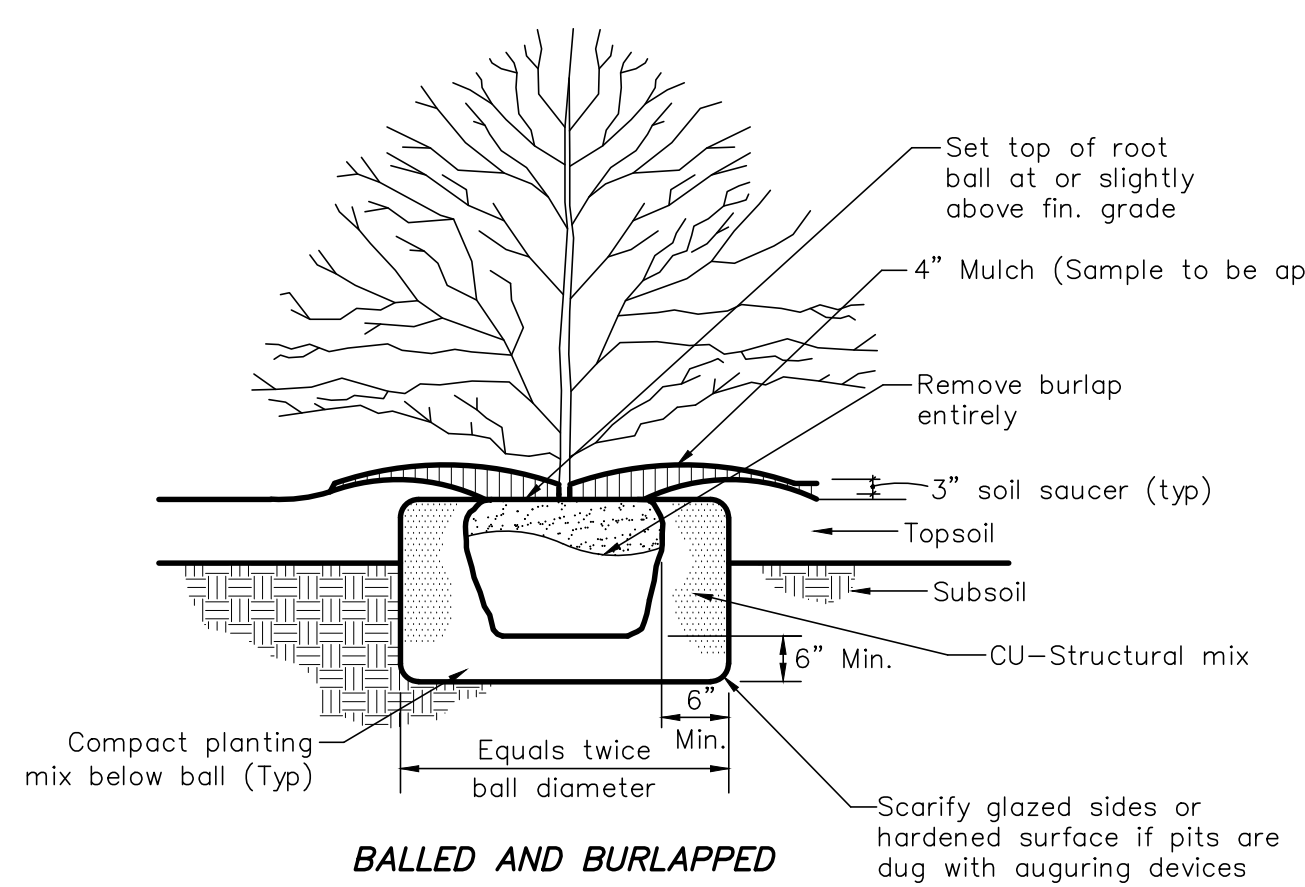
DATE	REVISIONS
7/27/2020	GENERAL REVISIONS
8/17/2020	RESPONSE REVISIONS
11/09/2021	COVERAGE STATUS

REVISIONS

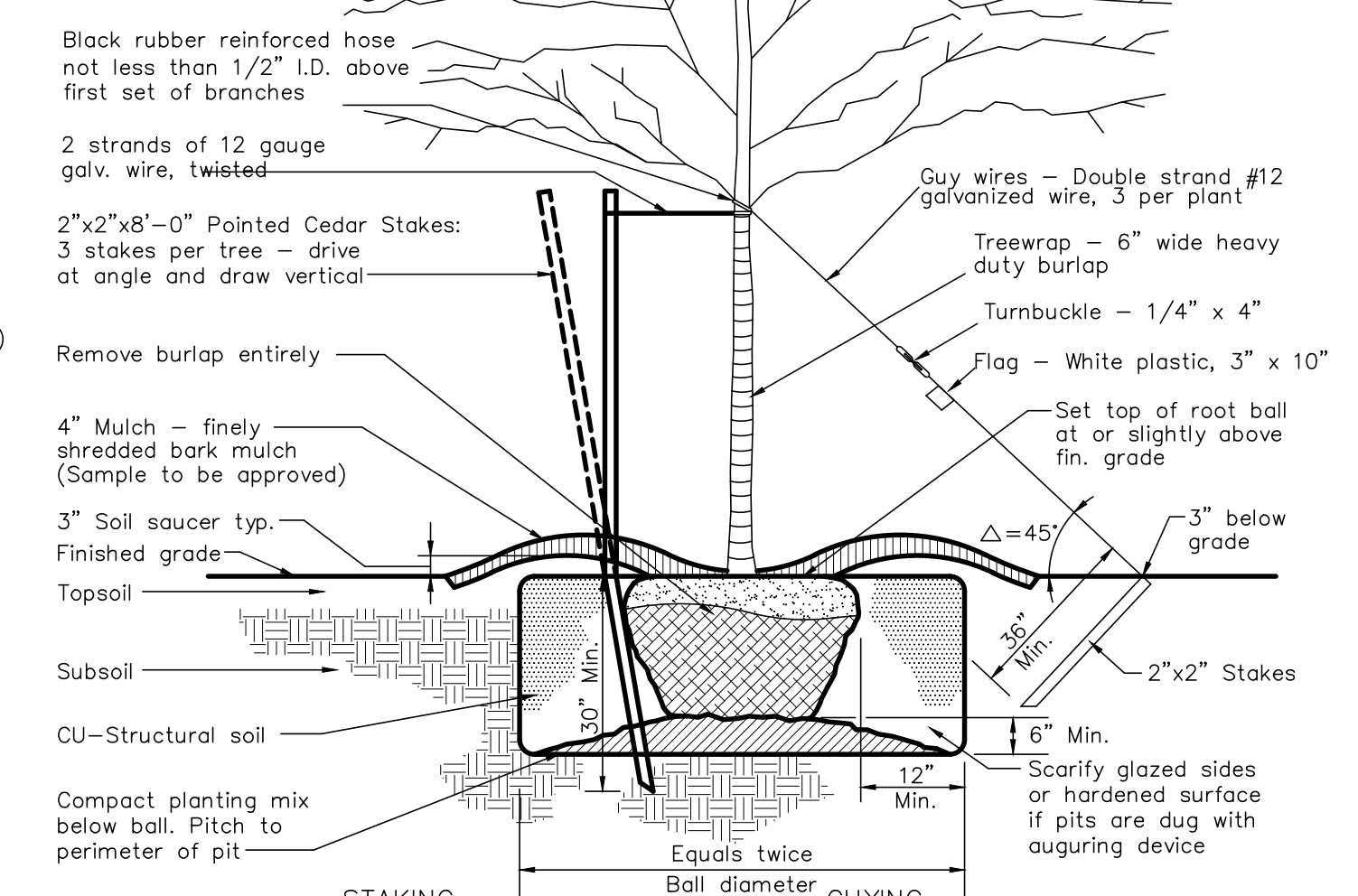
**LANDSCAPING PLAN FOR
185 HENRY JOHNSON BOULEVARD
CITY OF ALBANY
STATE OF NEW YORK**

FILE: 200140
SCALE: AS NOTED
DATE: 7/22/20
CHK: DRP
BY: MAB
200140.DWG

Pruning shall be in accordance with approved horticultural standards in order to preserve the natural form of the specific plants. If applicable & approved by the landscape architect, one-fourth to one-third of the wood shall be removed by thinning out to balance root loss due to transplanting.

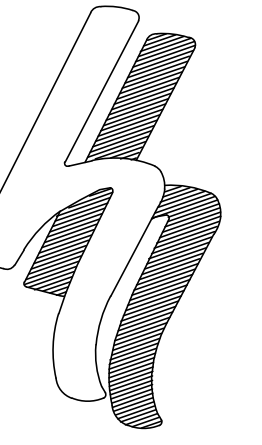


SHRUB PLANTING DETAIL
NOT TO SCALE



TREE PLANTING DETAIL
NOT TO SCALE

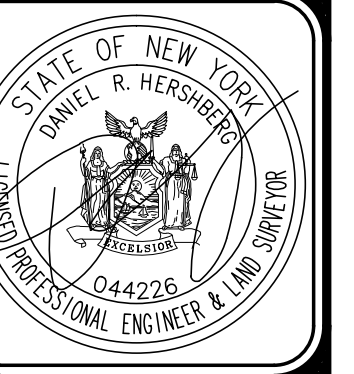
Notes:
1. In areas of mass planting, continuously excavate and mulch entire bed.
2. Do not add fertilizer to planting mix for fall planting.



HERSHBERG & HERSHBERG
Consulting Engineers and Land Surveyors

18 Locust Street
Albany, New York 12203

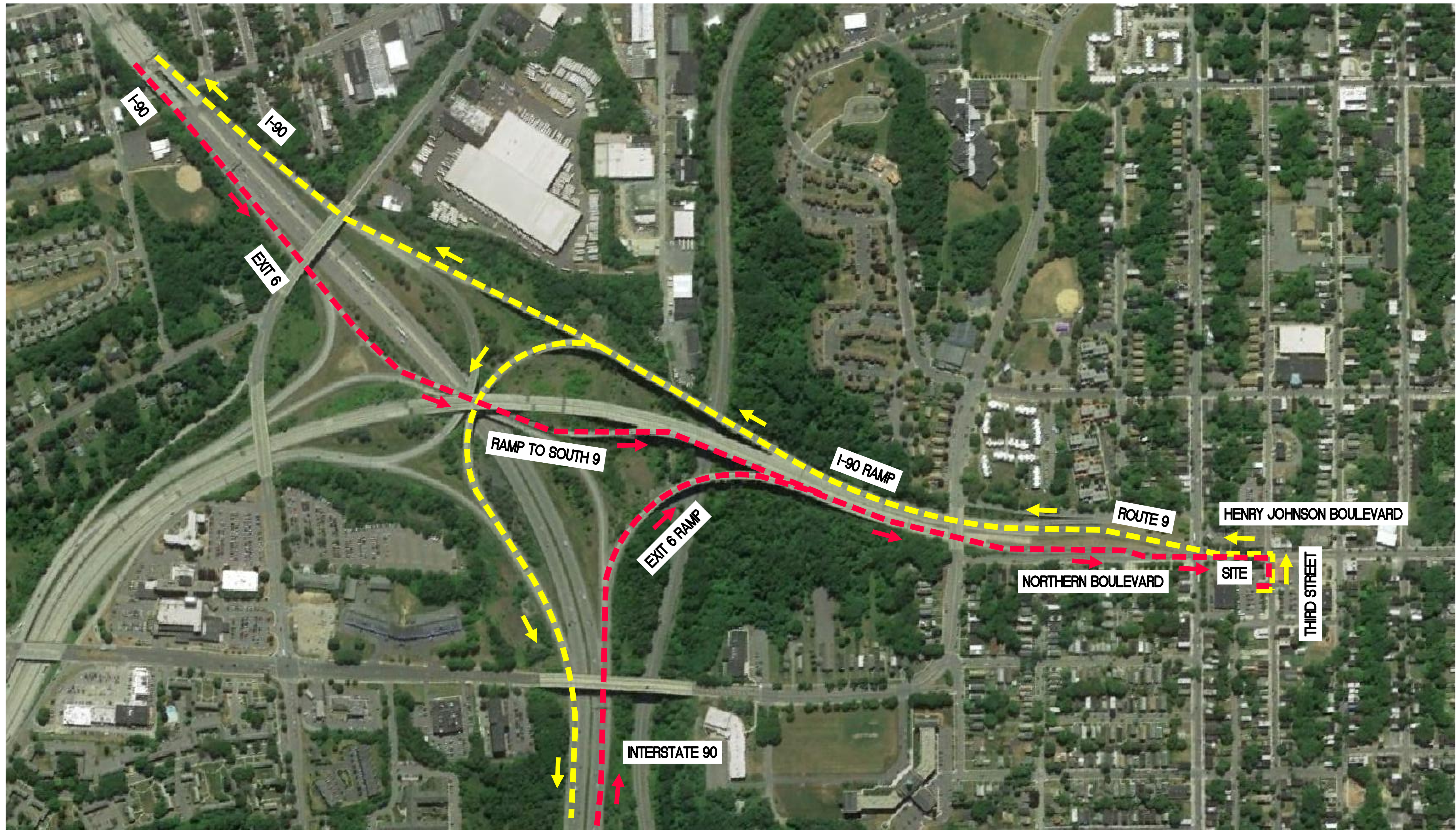
ALTERATION OF THIS DOCUMENT EXCEPT BY A LICENSED PROFESSIONAL ENGINEER OR LAND SURVEYOR, IS ILLEGAL.



REMARKS	DATE
GENERAL REVISIONS	7/27/2020
RESPONSE REVISIONS	8/17/2021
COVERAGE STATUS	11/09/2021
REVISIONS	

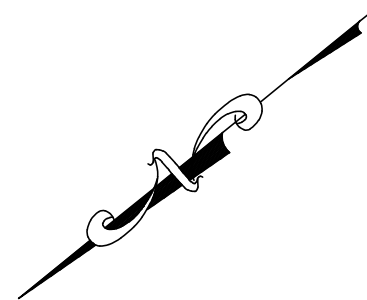
TRUCK ROUTING PLAN FOR
185 HENRY JOHNSON BOULEVARD
CITY OF ALBANY
STATE OF NEW YORK

FILE: 200140
SCALE: AS NOTED
BY: MAB
CHK: DRH
DATE: 7/22/20
200140.DWG



LEGEND

- - - - - INGRESS ROUTE
- - - - - EGRESS ROUTE



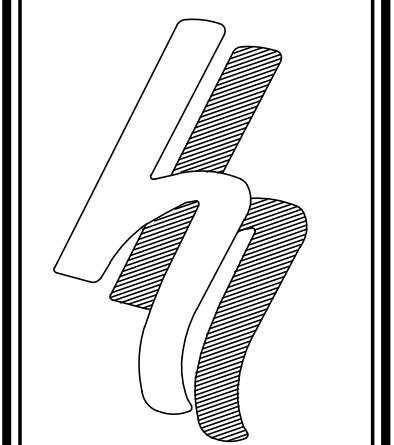


LEGEND

R.O.W.	RIGHT OF WAY	○	IRON ROD
No.	NUMBER	MH ○	MANHOLE
enc.	ENCROACHMENT	⊕	CATCHBASIN
P.O.B.	POINT OF BEGINNING	⊕	SIGN
S.F.	SQUARE FEET	—X—	FENCE LINE
N/F	NOW OR FORMERLY	—○—	OVERHEAD WIRE, UTILITY POLE & GUY WIRE
N	NORTH	↕	TRAFFIC FLOW ACCESS AREA
S	SOUTH	⊕	WATER SHUT OFF
E	EAST	⊕W	WATER VALVE
W	WEST	⊕V	HYDRANT
elec.	ELECTRIC	⊕G	GAS VALVE
L.	LIBER	⊕T	GAS TEST
P.	PAGE	○	STREET LIGHT
—ST—	STORM LINE	☆	LIGHT POLE
—S—	SEWER LINE	▒	CONCRETE
—W—	WATER LINE	■	PAVEMENT
—G—	GAS LINE	■	BRICK
—UE—UE—	UNDERGROUND ELECTRIC		
—W—	PROPOSED WATER MAIN		
—S—	PROPOSED SANITARY SEWER		
—G—	PROPOSED GAS LINE		
—ST—	PROPOSED STORM SEWER		

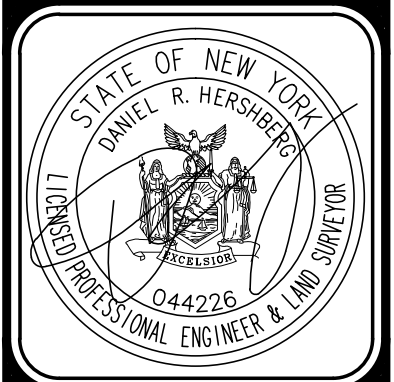
LEGEND

▽	CONE
⊕	FLAGGER
4	SIGN



HERSHBERG & HERSHBERG
 Consulting Engineers and Land Surveyors
 18 Locust Street
 Albany, New York 12203

ALTERATION OF THIS DOCUMENT EXCEPT BY A LICENSED PROFESSIONAL ENGINEER OR LAND SURVEYOR, IS ILLEGAL.



DATE	REVISIONS
7/27/2020	GENERAL REVISIONS
8/17/2020	RESPONSE REVISIONS
11/09/2021	COVERAGE STAT

MAINTENANCE AND PROTECTION OF TRAFFIC NOTES

- MAINTENANCE AND PROTECTION OF TRAFFIC SHALL BE PROVIDED IN ACCORDANCE WITH SECTION 619 OF THE JANUARY 1, 2019 NYS STANDARD SPECIFICATIONS AND THE NEW YORK STATE MANUAL OF UNIFORM TRAFFIC CONTROL DEVICES (M.U.T.C.D.) DATED MAY 2012 AND ALL OTHER APPLICABLE PROVISIONS CONTAINED IN THIS CONTRACT. ALL SIGN NUMBERS REFER TO THE M.U.T.C.D.
- THE FINAL RESPONSIBILITY FOR THE PROTECTION OF THE TRAVELING PUBLIC AND HIS OWN PERSONNEL SHALL REST WITH THE CONTRACTOR.
- PRIOR TO THE START OF WORK, THE CONTRACTOR MAY SUBMIT ANY PROPOSED CHANGES TO THE TRAFFIC CONTROL PLAN TO THE ENGINEER FOR APPROVAL. ANY CHANGE WHICH ALTERS THE BASIC CONCEPT OF THE PLAN MUST BE APPROVED BY THE REGIONAL DIRECTOR OR HIS DESIGNEE.
- VEHICLES AND CONSTRUCTION EQUIPMENT BELONGING TO THE CONTRACTOR OR THE CONTRACTOR'S EMPLOYEES SHALL BE MOVED A MINIMUM OF 30 FEET FROM THE EDGE OF PAVEMENT DURING NON-WORKING HOURS.
- DURING WORKING HOURS, NO CONSTRUCTION MATERIAL MAY BE STORED ON THE ROADWAY OR ROADBED EXCEPT IN A PROTECTED WORK ZONE.
- THE CONTRACTOR SHALL MAINTAIN ACCESS TO ALL PROPERTIES IN THE VICINITY OF THE PROJECT SITE AT ALL TIMES.
- SIGN LOCATIONS SHOWN ON THE PLANS ARE APPROXIMATE. ACTUAL LOCATION SHALL BE ADAPTED TO PREVAILING CONDITIONS.
- SIGNS THAT ARE NOT APPLICABLE SHALL BE COVERED OR OBSCURED FROM SIGHT.
- THE W20-7 FLAGGER SIGN SHALL BE USED WHENEVER FLAGGING OCCURS FOR MORE THAN A BRIEF PERIOD OF TIME. THE SIGN SHALL BE PROMPTLY REMOVED, COVERED OR FACED AWAY FROM TRAFFIC WHEN THE FLAGGING OPERATION CEASES.
- THE CONTRACTOR SHALL BE RESPONSIBLE FOR MAINTAINING ALL TRAFFIC CONTROL DEVICES REQUIRED DURING CONSTRUCTION AND MAKING SURE ALL SIGNS, CONES AND DRUMS ARE IN PLACE AND IN GOOD CONDITION.
- THE CONTRACTOR SHALL MAINTAIN ALL EXISTING SIGNS FOR THE DURATION OF THE PROJECT OR UNTIL NEW REPLACEMENT SIGNS ARE INSTALLED. ALL COSTS TO WORK AROUND, REPLACE ON TEMPORARY POSTS OR TO TEMPORARILY RELOCATE EXISTING SIGNS SHALL BE INCLUDED IN THE PRICE BID FOR ITEM 619.01 - BASIC MAINTENANCE & PROTECTION OF TRAFFIC.
- LENGTH OF TAPERS SHOWN ON THE MAINTENANCE AND PROTECTION OF TRAFFIC GENERAL PLAN SHALL BE DETERMINED FROM SECTION 6C.08 OF THE M.U.T.C.D.. CONE SPACING SHALL BE DETERMINED FROM SECTION 6F.64 OF THE M.U.T.C.D..
- NO ATTEMPT HAS BEEN MADE TO SHOW THE LOCATION OF ANY UNDERGROUND UTILITIES WHICH MAY EXIST WITHIN OR ADJACENT TO THE PROJECT AREA. PRIOR TO THE UTILIZATION OF THE INFORMATION SHOWN HERON, U.F.P.O. SHOULD BE NOTIFIED (811) FOR THE VERIFICATION OF THE EXISTENCE OF ANY AND ALL SUCH UTILITIES.
- IT SHALL BE BE THE CONTRACTOR'S SOLE RESPONSIBILITY FOR ANY DAMAGE INCURRED DURING EXCAVATION OPERATIONS. ALL COSTS RELATED TO THE REPAIR OF DAMAGED UTILITIES SHALL BE BORNE BY THE CONTRACTOR AT NO ADDITIONAL COST TO THE OWNER.
- ALL CONSTRUCTION SIGNS SHALL BE PAID FOR UNDER ITEM 619.02. CONSTRUCTION SIGN MATERIALS SHALL COMPLY WITH SECTION 619-2 OF THE NYSDOT STANDARD SPECIFICATIONS.
- WORK ZONES LEFT OVERNIGHT SHALL BE PROTECTED WITH THE APPROPRIATE WARNING SIGNS SUPPLEMENTED WITH TYPE "A" LOW INTENSITY WARNING LIGHTS. DRUMS OR BARRICADES SHALL BE USED FOR CHANNELIZATION. TWO-WAY TRAVEL SHALL BE PROVIDED DURING NON-WORKING HOURS.

GENERAL NOTES

- ACCESS FOR CITY'S MAINTENANCE STAFF/REPRESENTATIVES MUST BE MAINTAINED AT ALL TIMES TO THE TRAFFIC SIGNAL EQUIPMENT AT THIS INTERSECTION.
- CONTRACTOR MUST PROTECT THE TRAFFIC SIGNAL EQUIPMENT BOTH ABOVE AND BELOW EXISTING GRADE, AT THIS INTERSECTION, FROM DAMAGE FROM WORK ACTIVITIES AT THIS SITE.
- DAMAGE TO CITY SIDEWALKS, CURBS, AND ROADWAYS WILL BE THE SOLE RESPONSIBILITY OF THE DEVELOPER AND CONTRACTORS.
- DEVELOPER AND CONTRACTORS ARE RESPONSIBLE FOR CALLING THE OFFICE OF THE CHIEF SUPERVISOR OF TRAFFIC ENGINEERING TO ARRANGE FOR PARKING RESTRICTIONS FOR THE PROJECT. ANY FEE FOR THE PARKING OR METER SPACES WILL BE THE RESPONSIBILITY OF THE DEVELOPER/CONTRACTOR. METER PARKING IS ON BROADWAY AND NON-METER PARKING IS ON LIVINGSTON AVE.
- ONCE APPROVED THIS PLAN WILL REMAIN IN PLACE FOR THE DURATION OF THE PROJECT UNLESS A MODIFIED PLAN IS SUBMITTED AND APPROVED BY THE OFFICE OF CHIEF SUPERVISOR OF TRAFFIC ENGINEERING.
- PER BILL TRUDEAU; KEEP 2 LANES OPEN ON COLVIN AVENUE AND PROVIDE BUSHES TO KEEP TRAFFIC FROM CROSSING OVER GRASS MEDIAN ON ANTHONY STREET.

CONSTRUCTION SIGNS - ITEM 619.02

TEXT	M.U.T.C.D. NO.	APPROX. AREA (S.F.)
SIDEWALK CLOSED	R9-9	24" X 12" (2.0 S.F.)
SIDEWALK CLOSED CROSS HERE	R9-11	24" X 12" (2.0 S.F.)
END CONSTRUCTION	G20-2	24" X 60" (10.0 S.F.)
CONSTRUCTION AHEAD	CUSTOM	36" X 36" (9.0 S.F.)

**MAINTENANCE AND PROTECTION OF TRAFFIC PLAN FOR
 185 HENRY JOHNSON BOULEVARD
 CITY OF ALBANY
 STATE OF NEW YORK**

FILE: 200140 SCALE: AS NOTED DATE: 7/22/20 CHECK: DRH BY: MAB