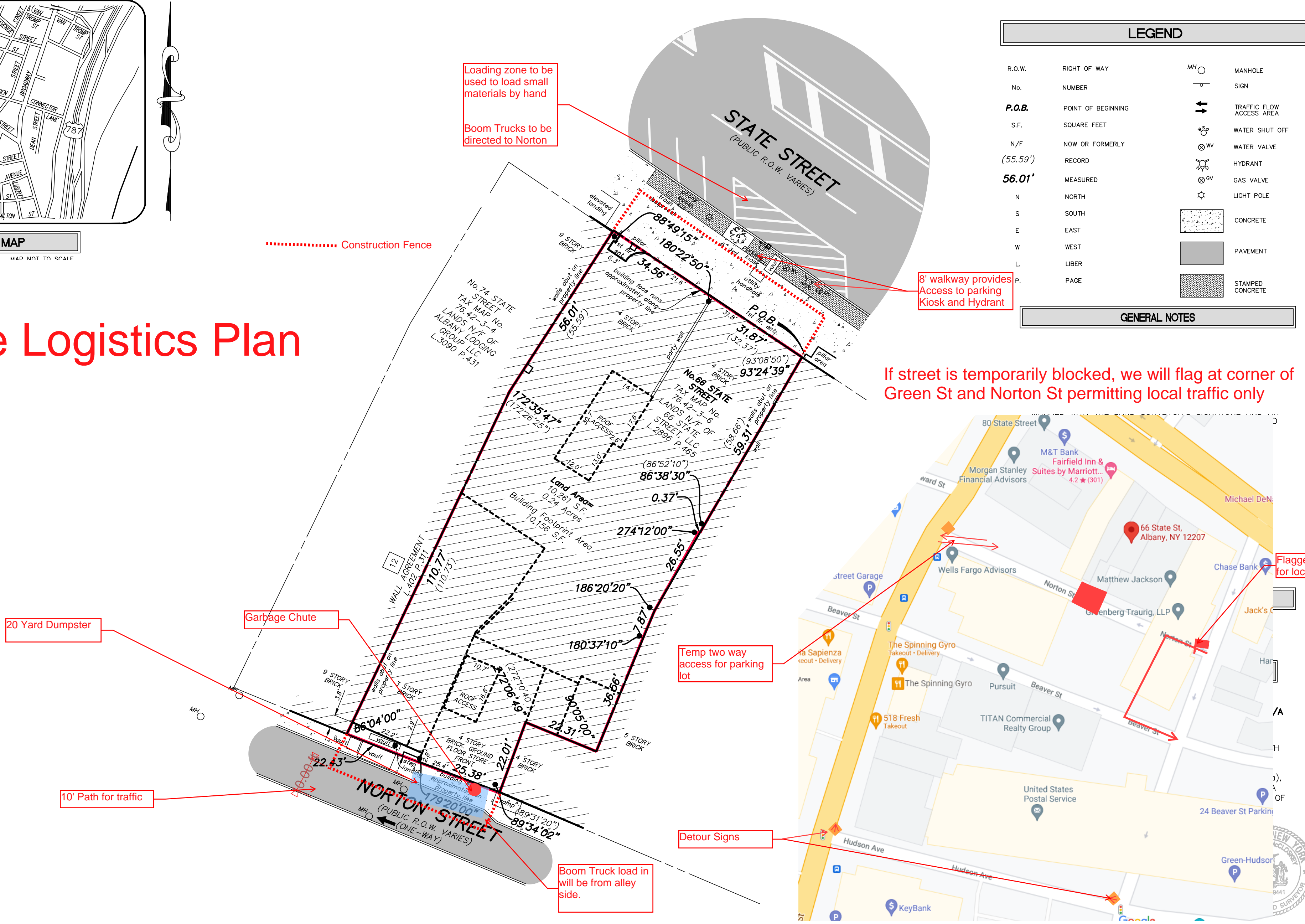


VICINITY MAP  
MAP NOT TO SCALE

# 66 State Logistics Plan



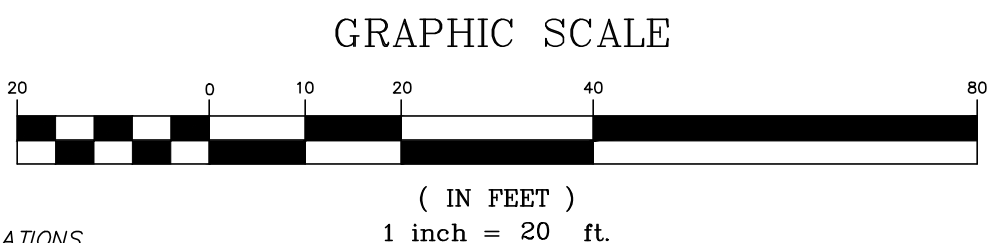
LEGEND			
R.O.W.	RIGHT OF WAY	MH	MANHOLE
No.	NUMBER	—	SIGN
P.O.B.	POINT OF BEGINNING	↔	TRAFFIC FLOW ACCESS AREA
S.F.	SQUARE FEET	⊗	WATER SHUT OFF
N/F	NOW OR FORMERLY	⊗	WATER VALVE
(55.59')	RECORD	⊗	HYDRANT
56.01'	MEASURED	⊗	GAS VALVE
N	NORTH	⊗	LIGHT POLE
S	SOUTH	▒	CONCRETE
E	EAST	▒	PAVEMENT
W	WEST	▒	STAMPED CONCRETE
L	LIBER		
P.	PAGE		

GENERAL NOTES

ZONING INFORMATION

MU-DT MIXED USE DOWNTOWN DISTRICT

MIN. FRONT YARD	10 FEET
MIN. SIDE YARD	0 FEET
MIN. REAR YARD	0 FEET
MAX. BUILDING HEIGHT	N/A
MAX. LOT COVERAGE	100%



Markup by Redburn Property Services LLC on Hershberg & Hershberg (H&H) Survey.  
H&H bears no responsibility for markup

ZONING INFORMATION ADOPTED FROM: CITY OF ALBANY USDO- DATED APRIL 2017.  
SETBACK LINES DEPICT CURRENT ZONING REGULATIONS AND DO NOT NECESSARILY CORRESPOND WITH REGULATIONS WHEN SUBJECT PARCEL WAS DEVELOPED

**ALTA/ACSM LAND TITLE SURVEY**

MAP SHOWING LOCATION OF BUILDINGS AND IMPROVEMENTS WITH REFERENCE TO PROPERTY LINES OF

**No.66 STATE STREET**

CITY OF ALBANY COUNTY OF ALBANY, STATE OF NEW YORK

ALTERATION OF THIS DOCUMENT, EXCEPT BY A LICENSED PROFESSIONAL ENGINEER OR LAND SURVEYOR, IS ILLEGAL.

REVISIONS:

DATE: 4/20/2021    SCALE: 1"=20'    BY: AVC    CHK: GRT    MAP No.: 210132

**HERSHBERG & HERSHBERG**  
Consulting Engineers and Land Surveyors  
18 Locust Street  
Albany, New York 12203  
Ph. (518) 459-3096  
Fax (518) 459-5683  
E-mail: hershberg@aol.com