

SERIES 2000A DOUBLE HUNG WINDOWS

TEST SIZE W x H	AAMA RATING	AIR INFILTRATION	DESIGN PRESSURE	WATER RESISTANCE	U-VALUE	SHGC	VT
56" x 91"	CW-PG50	≤0.30 cfm/ft ²	50 psf	7.5 psf	0.37-0.60	0.17-0.60	0.31-0.62



TABLE OF CONTENT

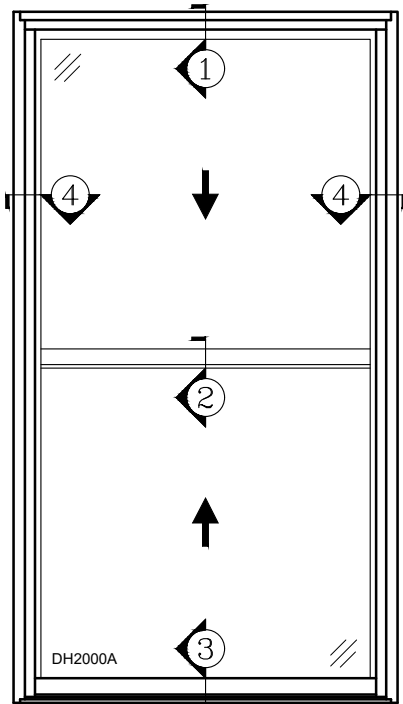
- INTRODUCTION -P1
- SECTION DETAILS -P2
- MULLION -P3-P4
- NAIL FIN -P5
- FACE FLANGE -P6-P7
- TRIPLE GLAZING -P7
- A/C ORIEL KIT -P8-P9

FEATURES

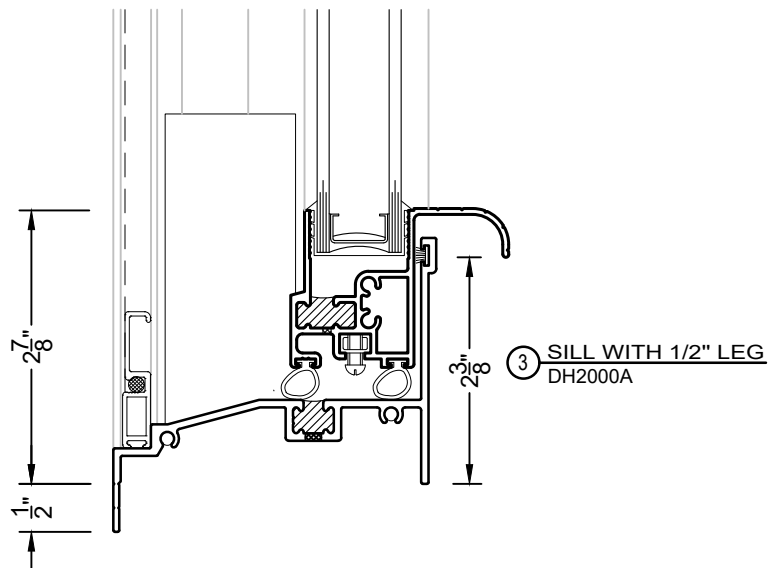
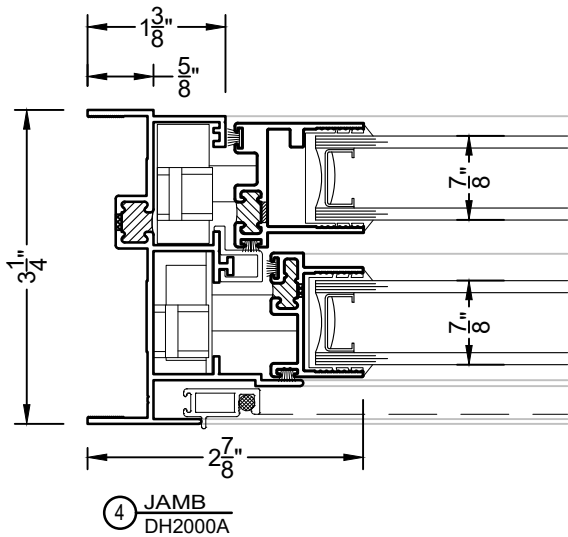
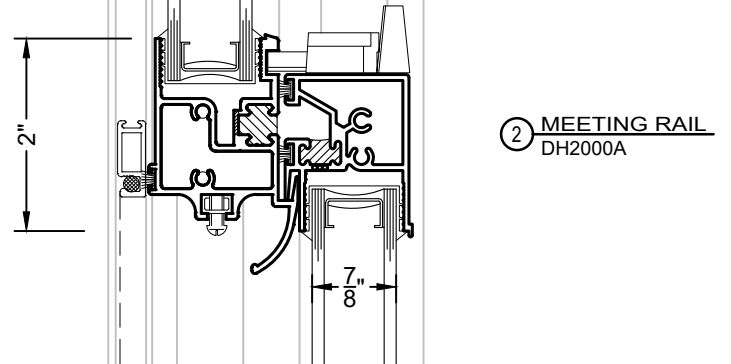
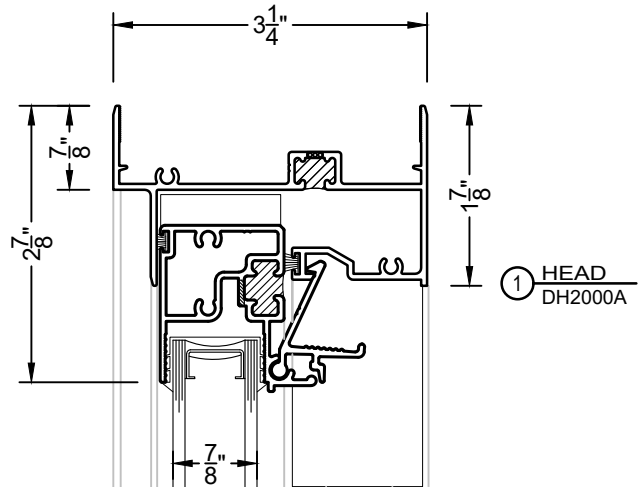
- ALUMINUM THERMAL-BREAK DOUBLE HUNG TILT WINDOW
- 3-1/4" FRAME DEPTH
- 7/8" DOUBLE PANE INSULATED GLASS
- AAMA 2604 POWDER COAT PAINT
- EQUAL SIGHTLINE DESIGN
- SLOPED SILL
- SILL WITH 1/2" EXTERIOR LEG
- TILT SASH WITH TILT LATCH
- CONTINUOUS LIFT HANDLE ON BOTTOM SASH
- ANTI-DRIFT HEAD CLIP LOCK
- MEETING RAIL LOCK
- SPIRAL BALANCES
- INSTALLATION SCREWS

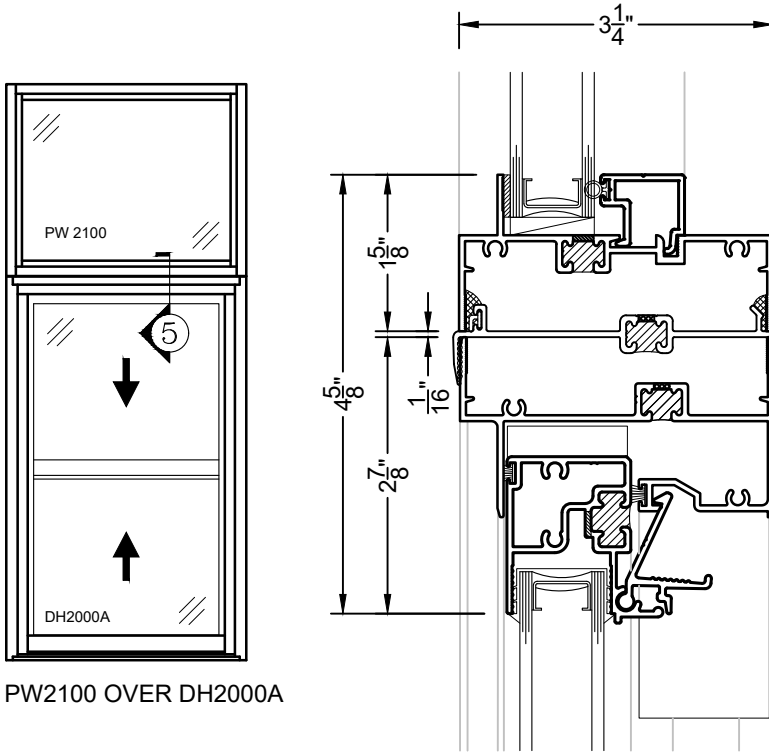
OPTIONAL SELECTIONS

- LOW-E COATING & ARGON FILLED IGU
- SILL WITH EQUAL LEG
- 1-1/4" NAILING FIN (1-1/8" SETBACK)
- FACE FLANGE WITH VARIOUS SIZE
- CUSTOM FINISH AND CUSTOM COLORS
- GRIDS
- BLOCK & TACKLE OR ULTRA LIFT BALANCES
- OTHER OPTIONAL ACCESSORIES
- A/C ORIEL KIT
- HALF OR FULL SCREEN
- SASH STOPS



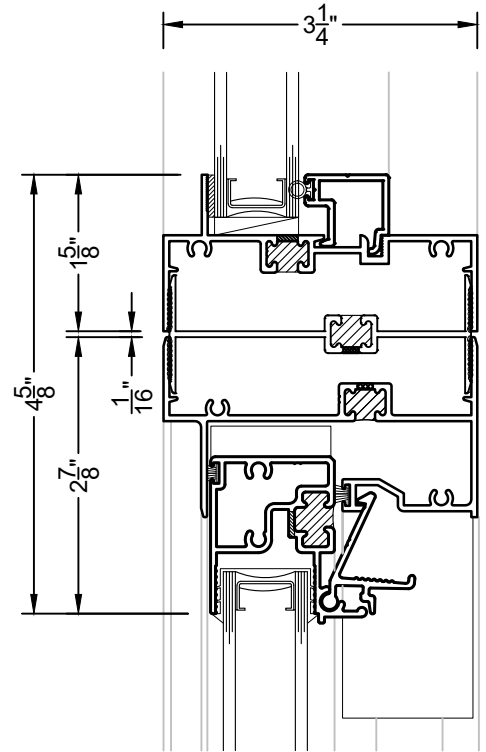
2000A DOUBLE HUNG



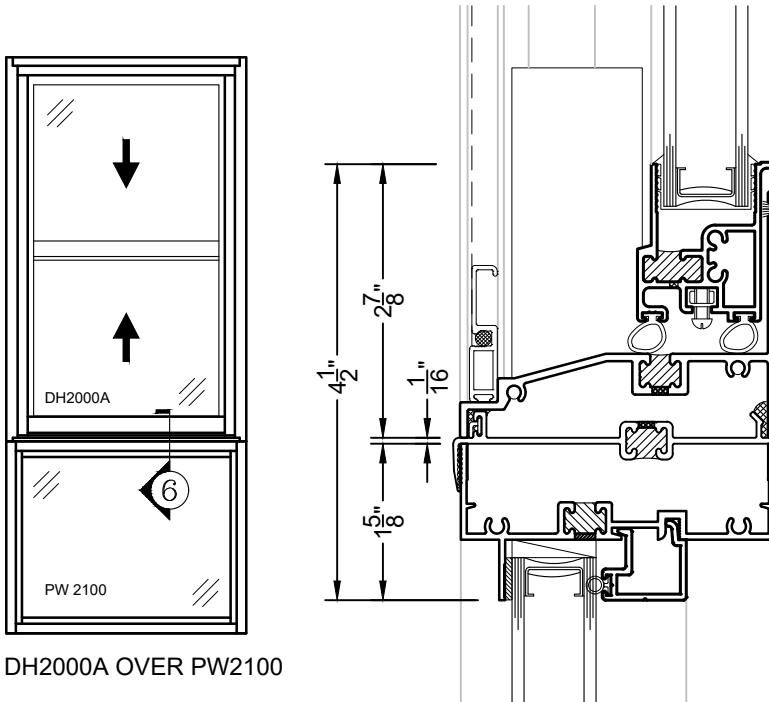


PW2100 OVER DH2000A

5 STACK MULLION
 PW2100 OVER DH2000A

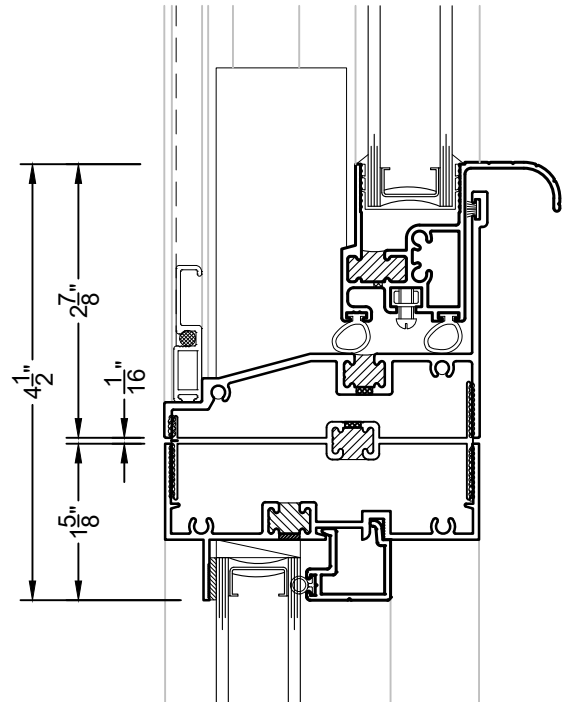


5A H MULLION
 PW2100 OVER DH2000A

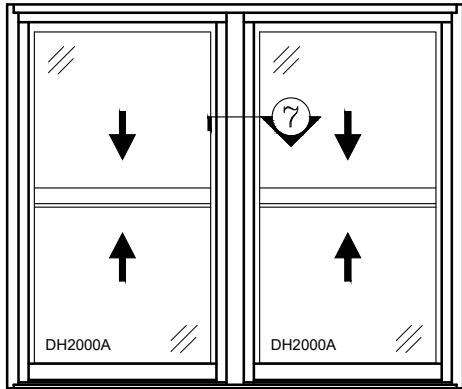


DH2000A OVER PW2100

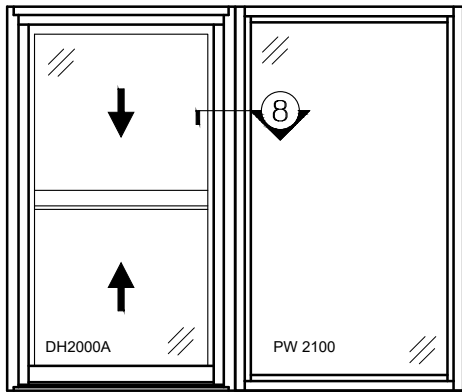
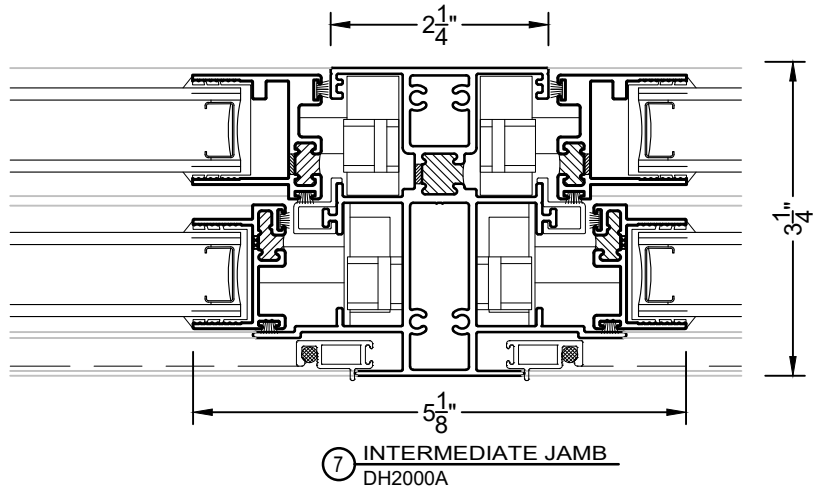
6 STACK MULLION
 DH2000A OVER PW2100



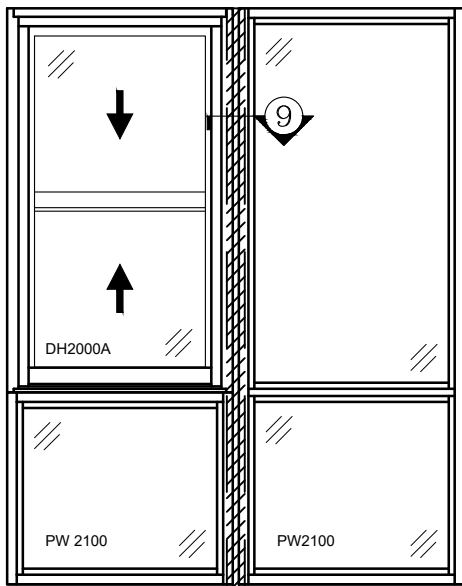
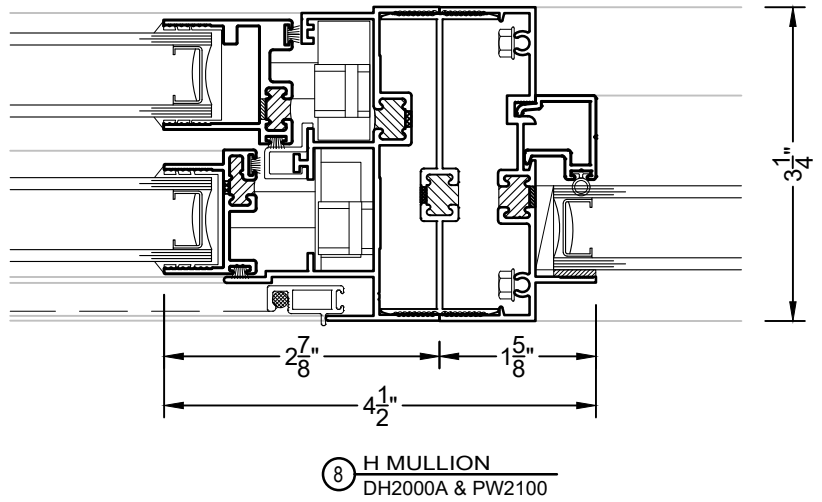
6A SHORT LEG H MULLION
 DH2000A OVER PW2100



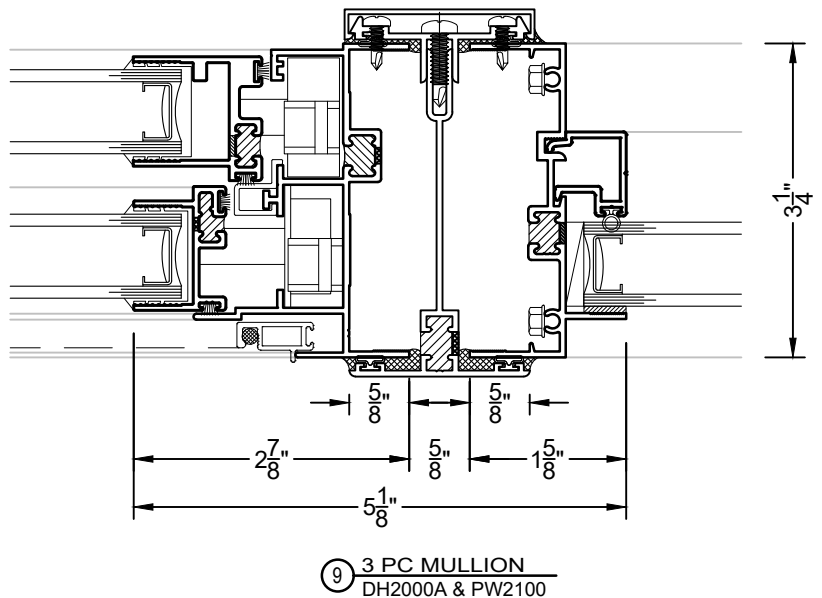
2000A TWIN DOUBLE HUNG



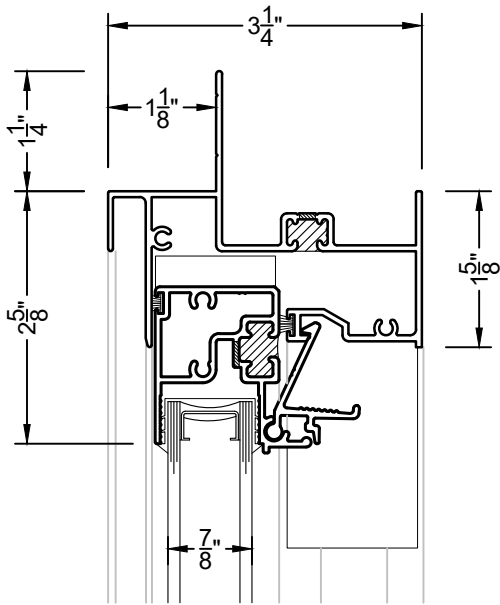
DH2000A & PW2100



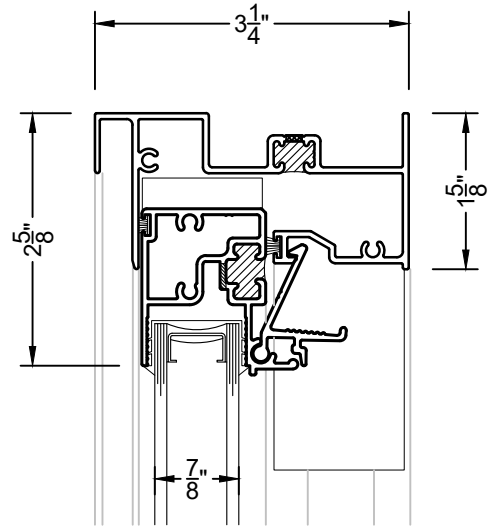
DH2000A OVER PW2100 &
 PW2100T W/ 3PC MULLION



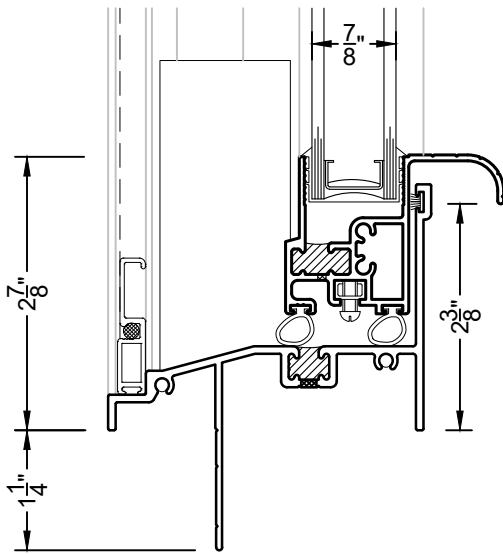
VER: 2020.03



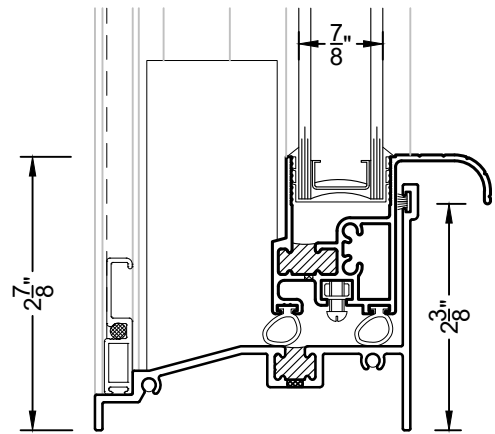
① NAILING FIN HEAD
DH2000A



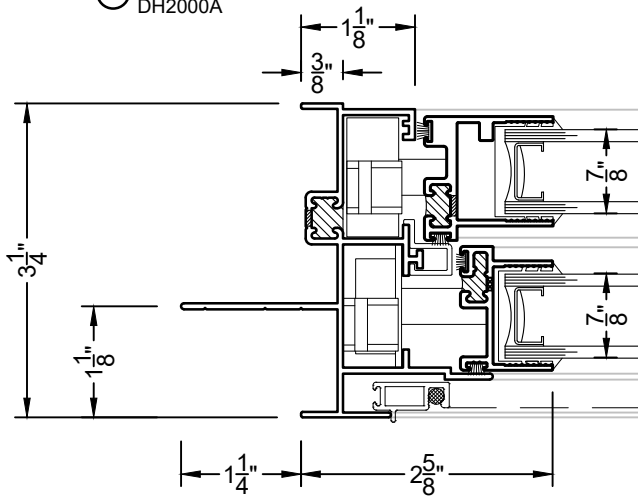
①A NAILING FIN HEAD W/O FIN
DH2000A



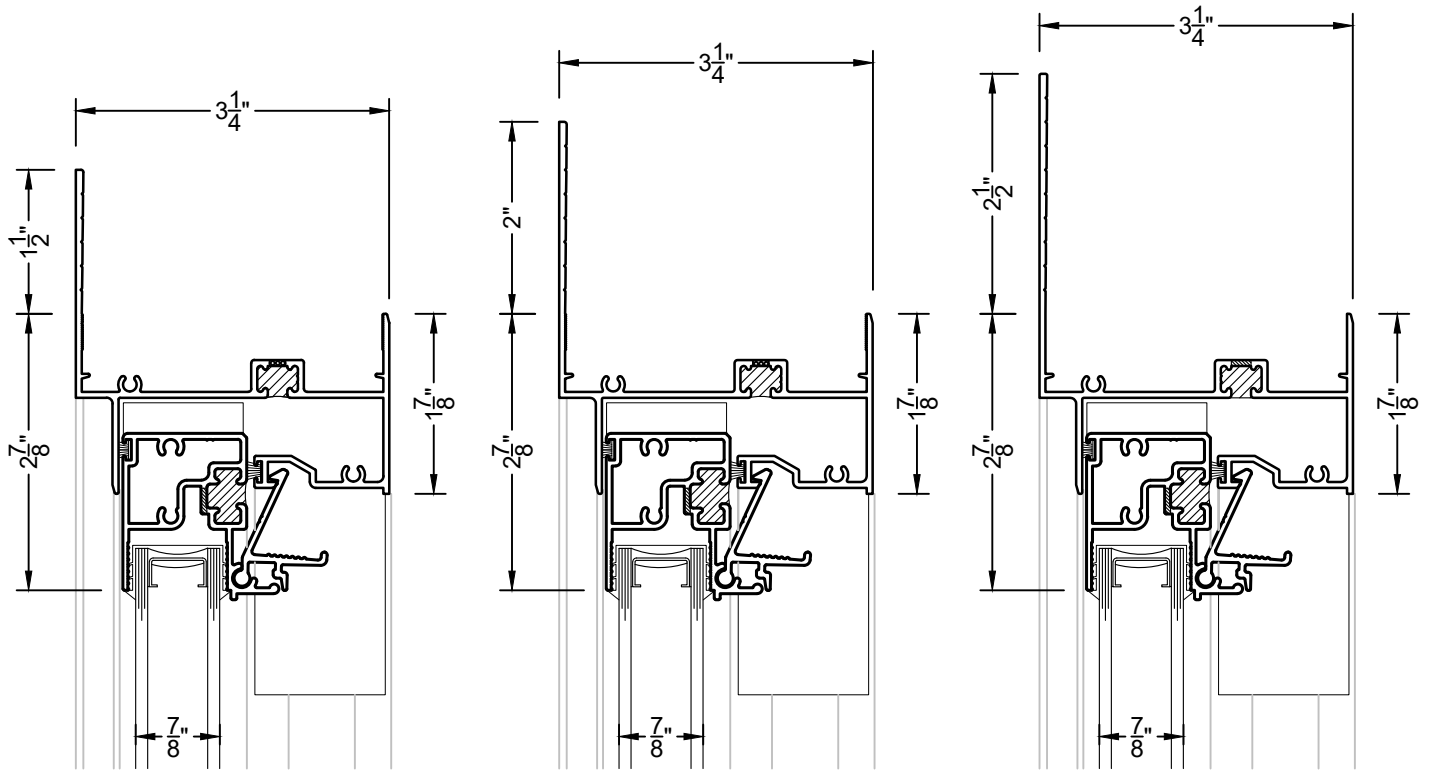
② NAILING FIN SILL
DH2000A



②A SILL WITH EQUAL LEG
DH2000A



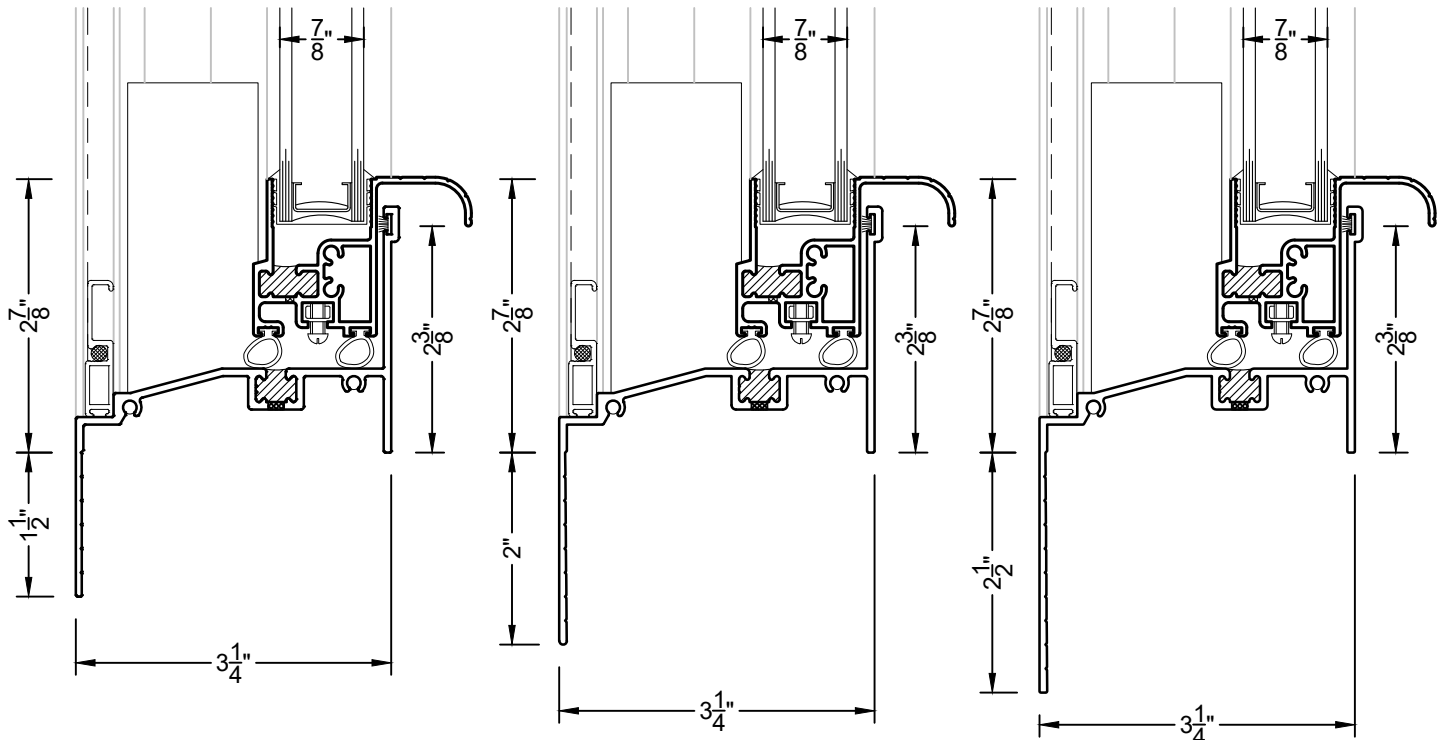
③ NAILING FIN JAMB
DH2000A



① 1-1/2" FLANGE HEAD
DH2000A

①A 2" FLANGE HEAD
DH2000A

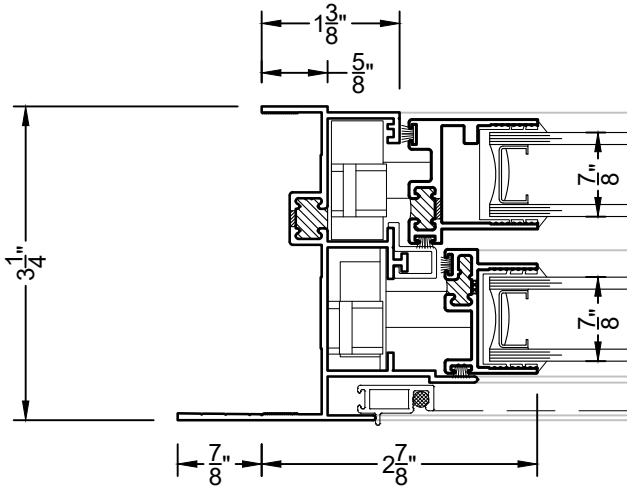
①B 2-1/2" FLANGE HEAD
DH2000A



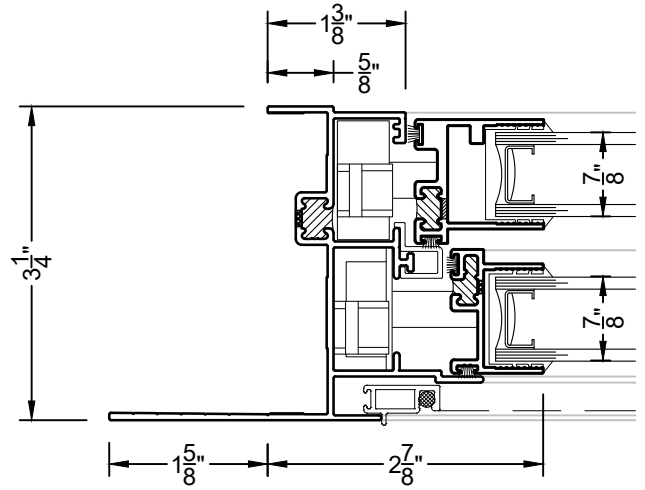
② 1-1/2" FLANGE SILL
DH2000A

②A 2" FLANGE SILL
DH2000A

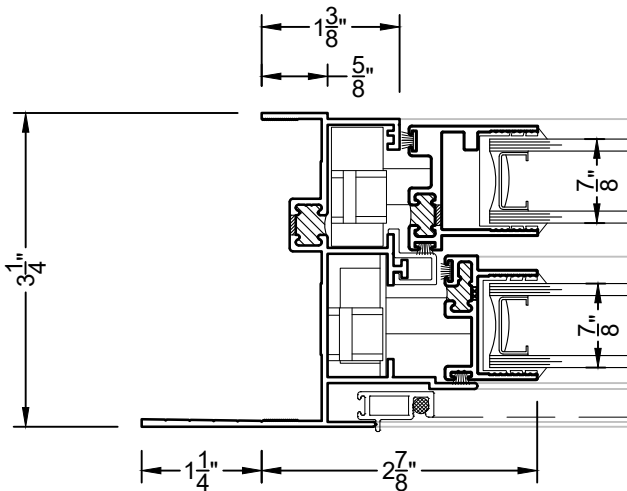
②B 2-1/2" FLANGE SILL
DH2000A



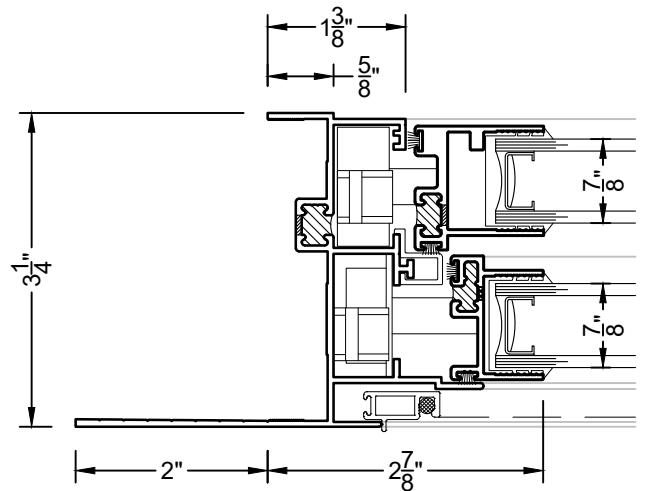
③ 7/8" FLANGE JAMB
 DH2000A



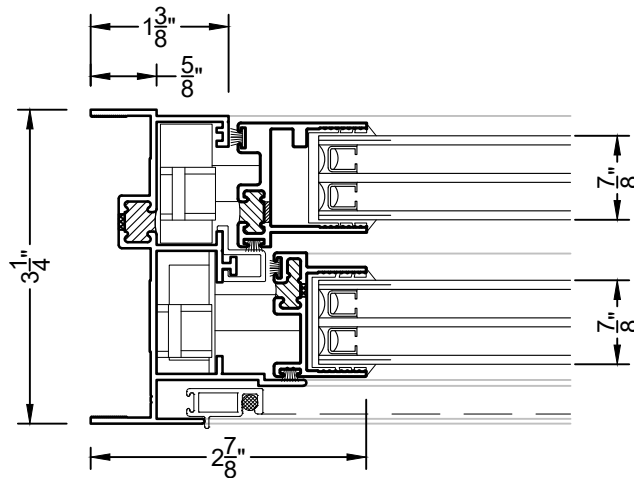
③B 1-5/8" FLANGE JAMB
 DH2000A



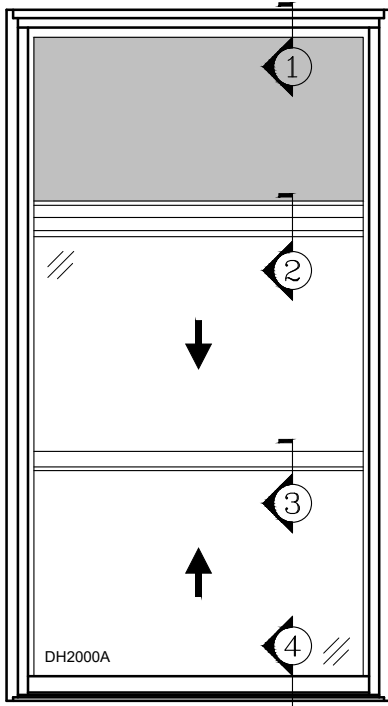
③A 1-1/4" FLANGE JAMB
 DH2000A



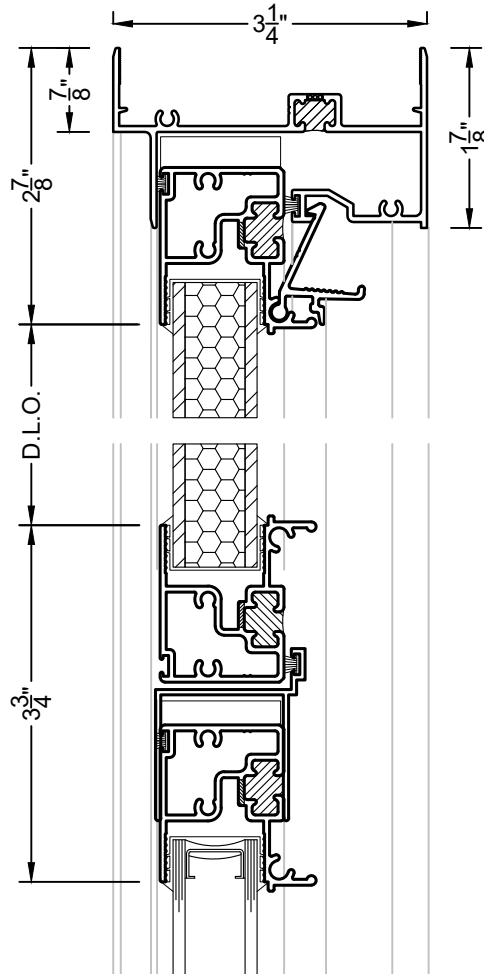
③C 2" FLANGE JAMB
 DH2000A



③D JAMB W/ TRIPLE GLAZING
 DH2000A

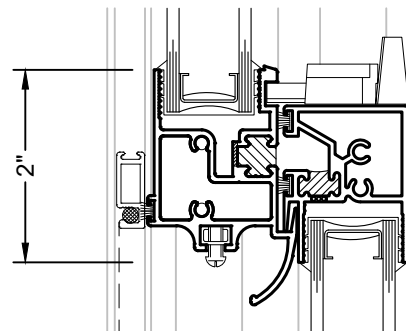


DH2000A WITH A/C ORIEL KIT
 AT TOP SASH

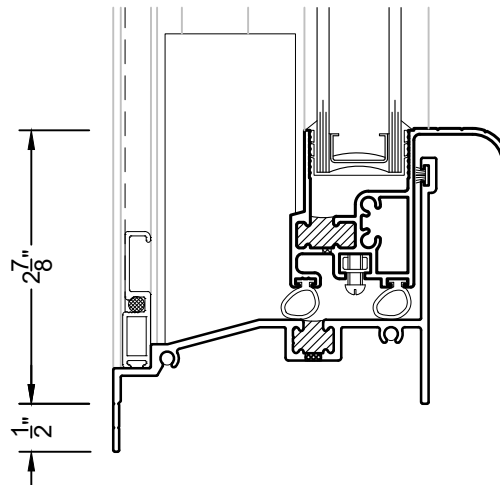


① HEAD
 DH2000A

② AC KIT
 DH2000A



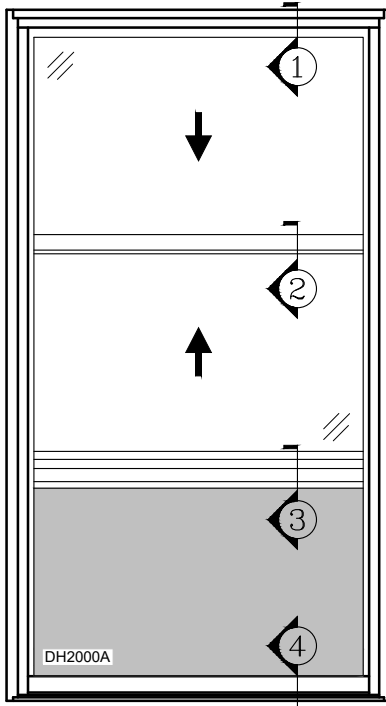
③ MEETING RAIL
 DH2000A



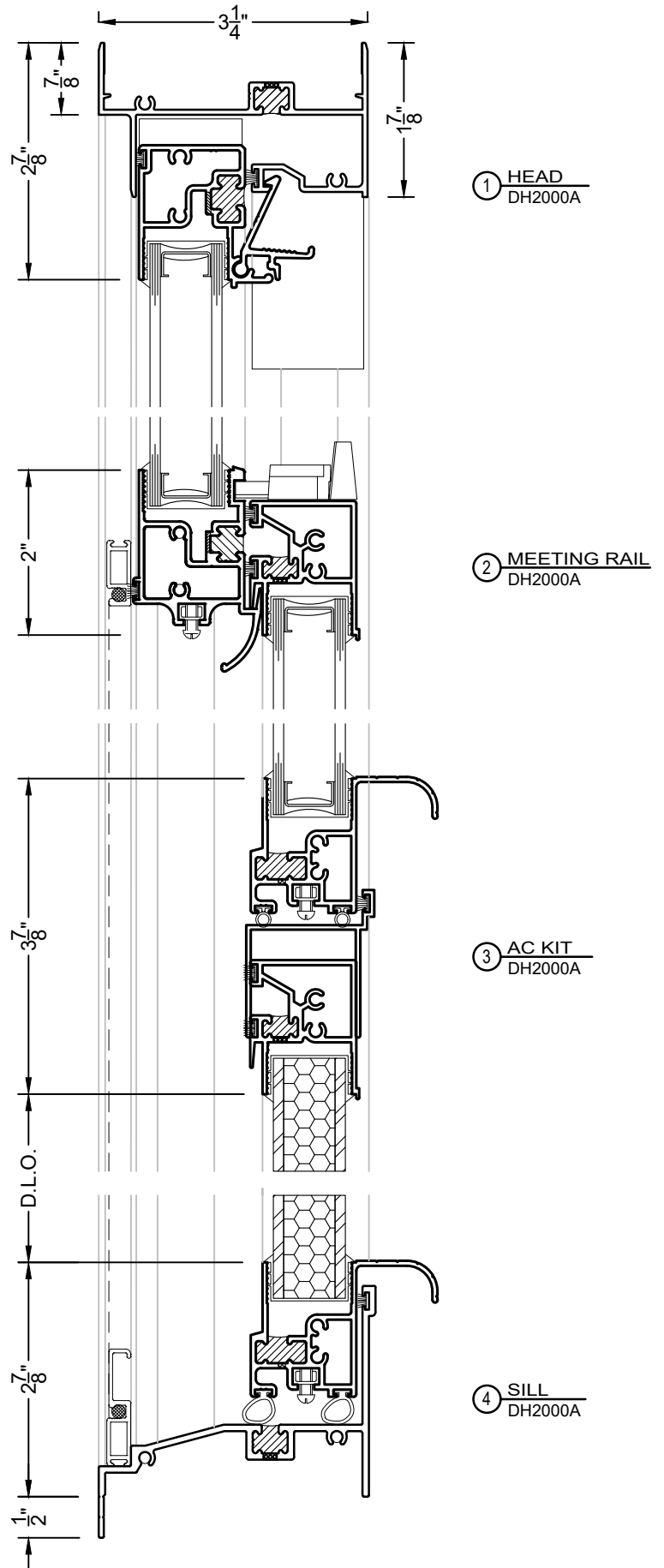
④ SILL
 DH2000A

VER: 2020.03

NO WATER PERFORMANCE
 WARRANTY FOR A/C ORIEL KIT.
 PLEASE CONTACT YOUR SALE REP.
 FOR MORE INFORMATION.



DH2000A WITH A/C ORIEL KIT
 AT BOTTOM SASH



VER: 2020.03

NO WATER PERFORMANCE
 WARRANTY FOR A/C ORIEL KIT.
 PLEASE CONTACT YOUR SALE REP.
 FOR MORE INFORMATION.

SERIES 2100 FIXED WINDOWS

TEST SIZE W x H	AAMA RATING	AIR INFILTRATION	DESIGN PRESSURE	WATER RESISTANCE	U- FACTOR	SHGC	VT
60" x 72"	CW-PG65	≤0.10 cfm/ft ²	65 psf	9.75 psf	0.30-0.54	0.22-0.70	0.37-0.72
48 ¹ / ₂ " x 84"	CW-PG90	≤0.10 cfm/ft ²	90 psf	12psf			



TABLE OF CONTENT

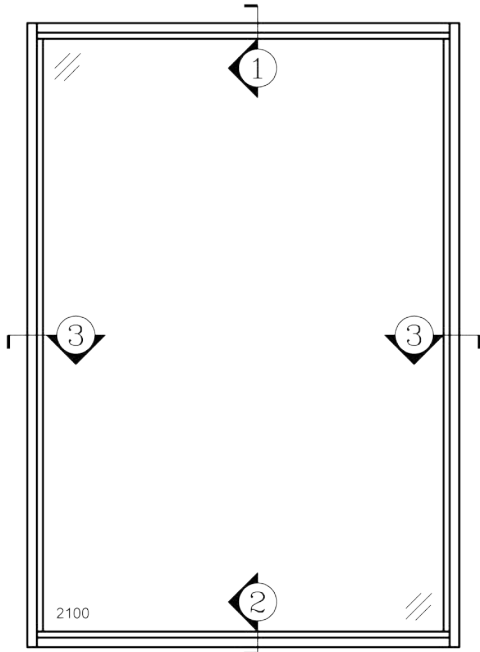
- INTRODUCTION -P1
- SECTION DETAILS -P2
- MULLION -P3-P4
- NAILING FIN -P5
- FACE FLANGE -P6-P8
- ARCHITECTURAL SHAPE -P9

FEATURES

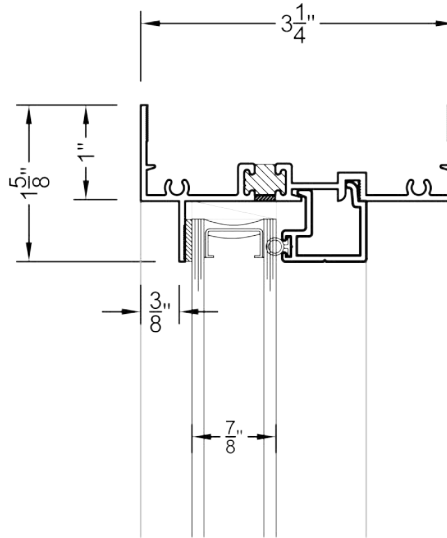
- ALUMINUM THERMAL-BREAK FIXED WINDOW
- 3-1/4" FRAME DEPTH
- 7/8" DOUBLE PANE INSULATED GLASS
- AAMA 2604 POWDER COAT PAINT

OPTIONAL SELECTIONS

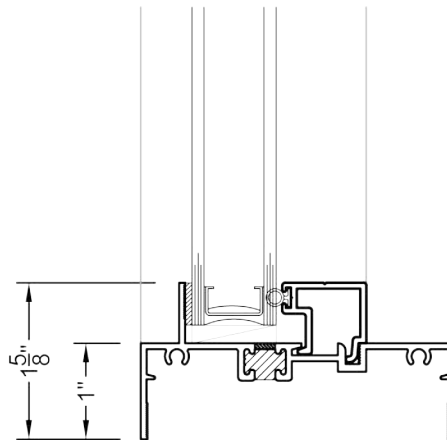
- LOW-E COATING & ARGON FILLED IGU
- 1" INSULATED GLASS
- 1-1/4" NAILING FIN (1-1/8" SETBACK)
- FACE FLANGE WITH VARIOUS SIZE
- CUSTOM FINISH AND CUSTOM COLOR
- GRIDS
- LOUVER SYSTEM
- ARCHITECTURAL SHAPES
- OTHER OPTIONAL ACCESSORIES



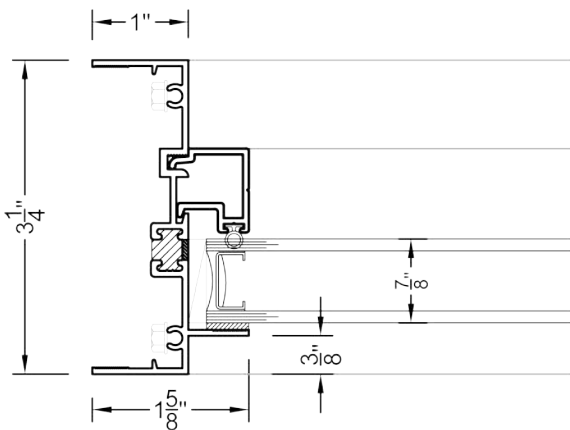
2100 PICTURE WINDOW



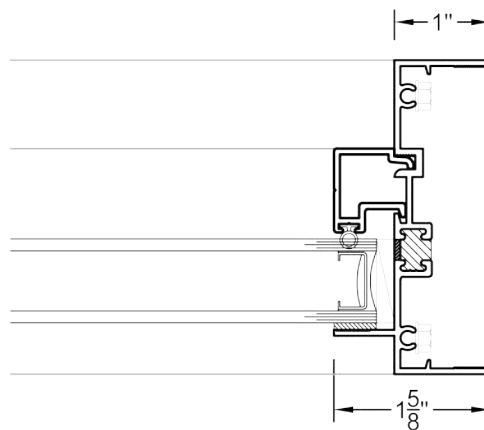
① HEAD
PW2100



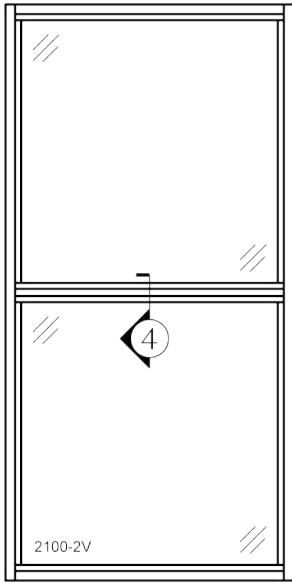
② SILL
PW2100



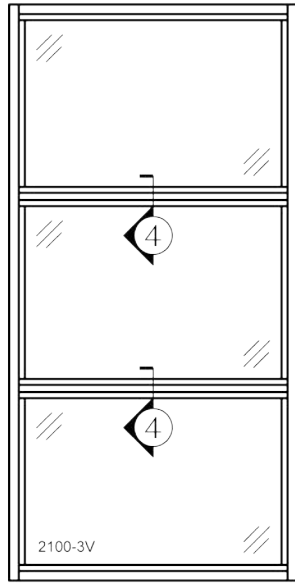
③ JAMB
PW2100



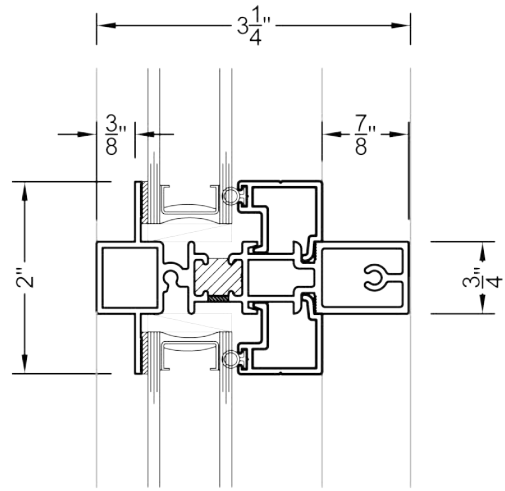
③ JAMB
PW2100



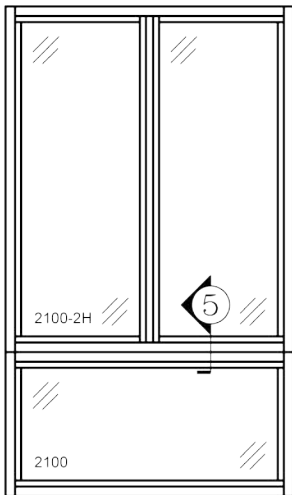
PW2100-2V VERTICAL 2 LITE



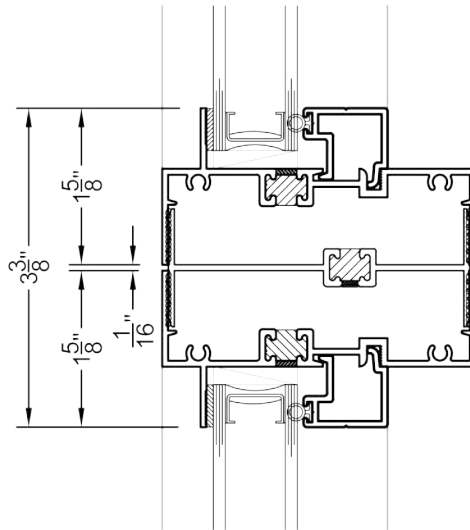
PW2100-3V VERTICAL 3 LITE



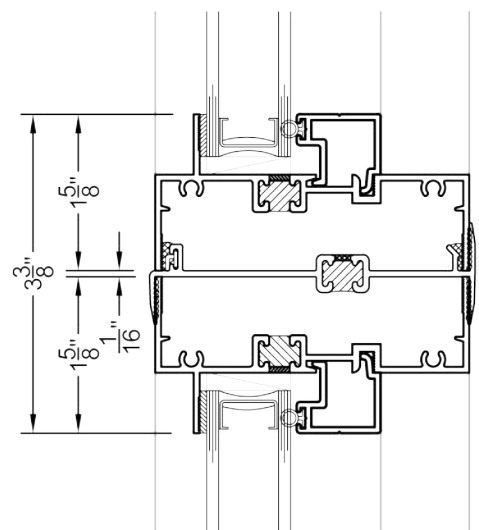
④ T IMPOST
 PW2100



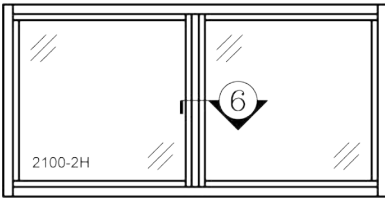
PW2100-2H OVER PW2100



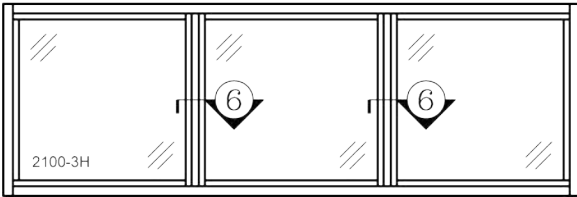
⑤ H MULLION
 PW2100 OVER PW2100



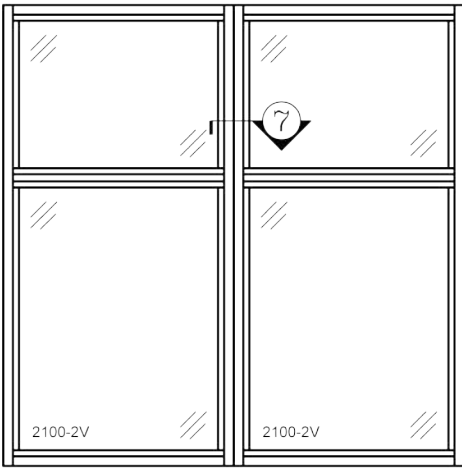
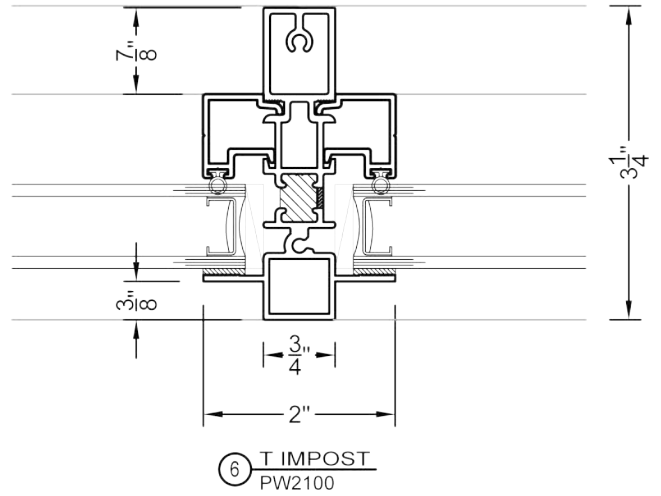
⑤A STACK MULLION
 PW2100 OVER PW2100



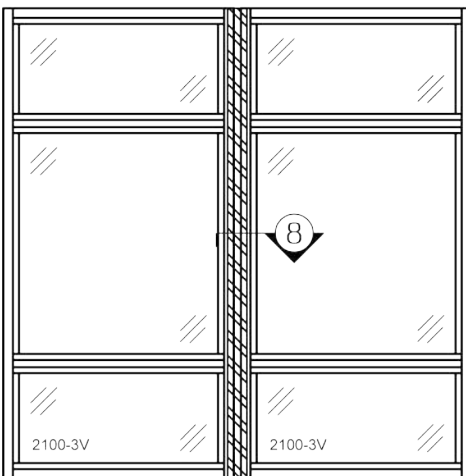
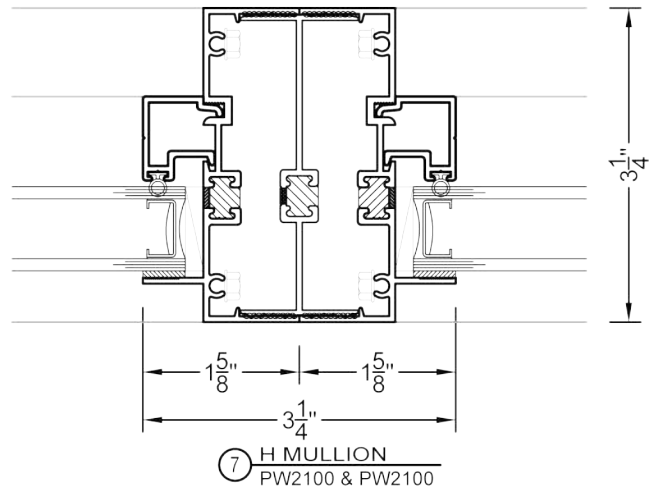
PW2100-2H HORIZONTAL 2 LITE



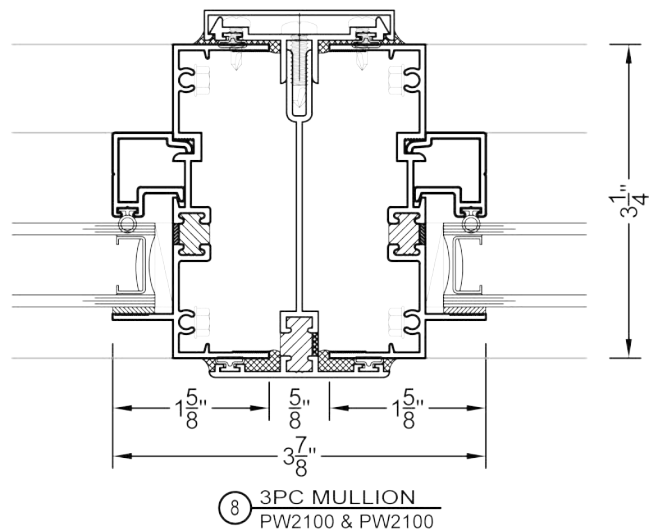
PW2100-3H HORIZONTAL 3 LITE



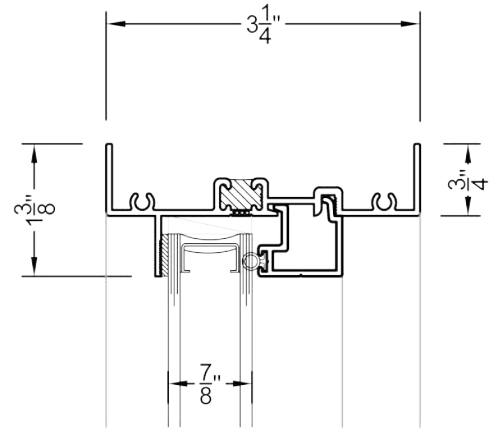
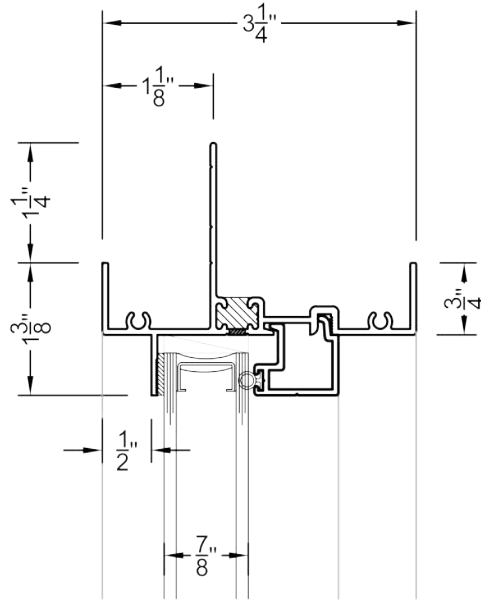
PW2100-2V & PW2100-2V WITH
 H MULLION



PW2100-3V & PW2100-3V WITH 3PC
 MULLION

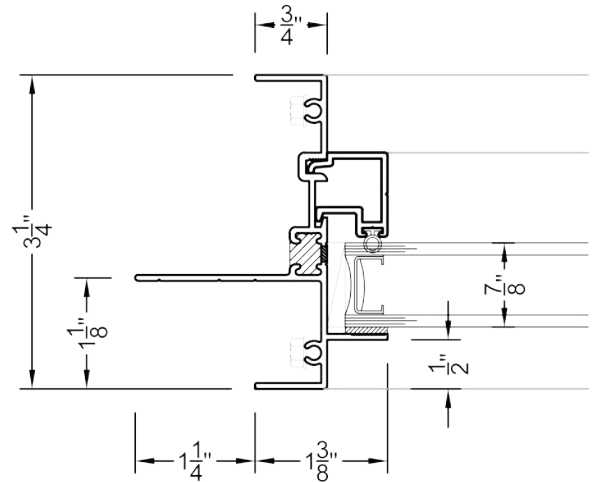
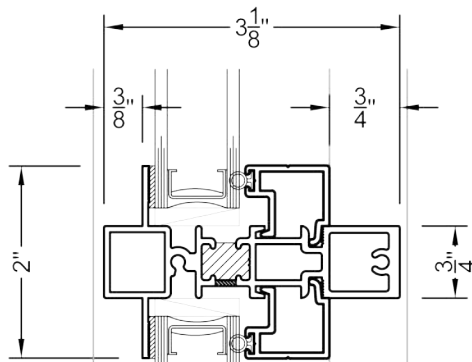


① NAILING FIN HEAD
 PW2100N



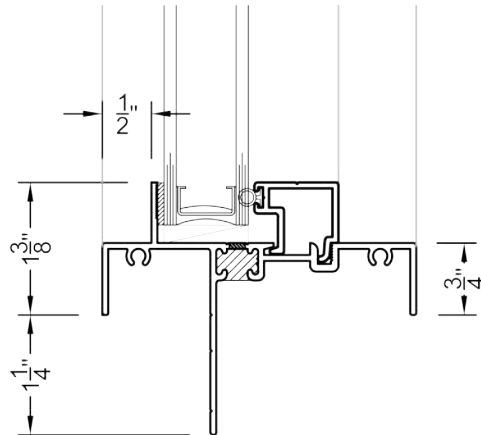
①A NAILING FRAME W/O FIN
 PW2100N

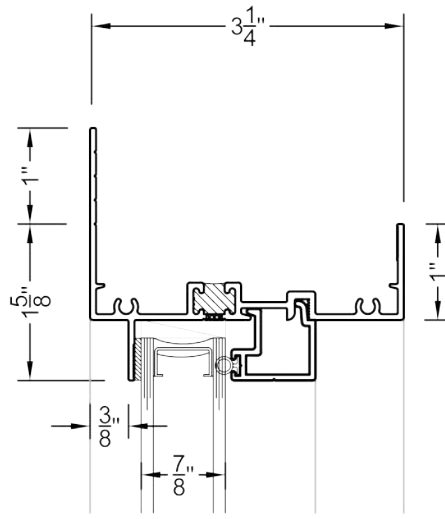
② T IMPOST
 PW2100N



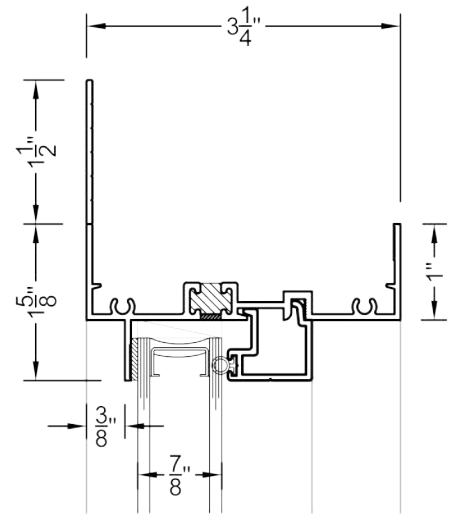
④ NAILING FIN JAMB
 PW2100N

③ NAILING FIN SILL
 PW2100N

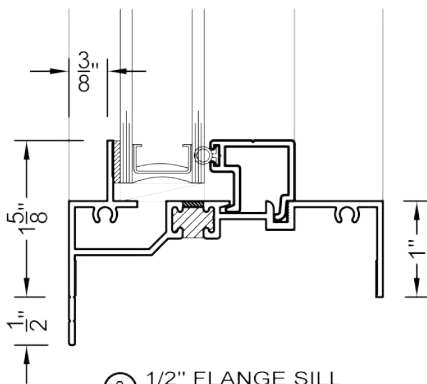




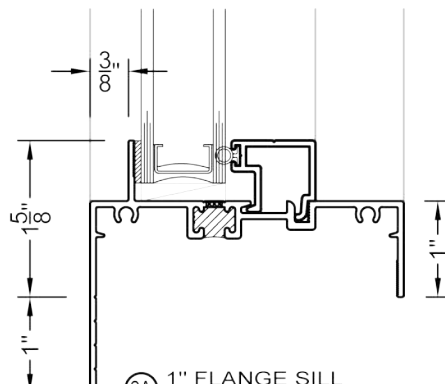
1A 1" FLANGE HEAD
PW2100



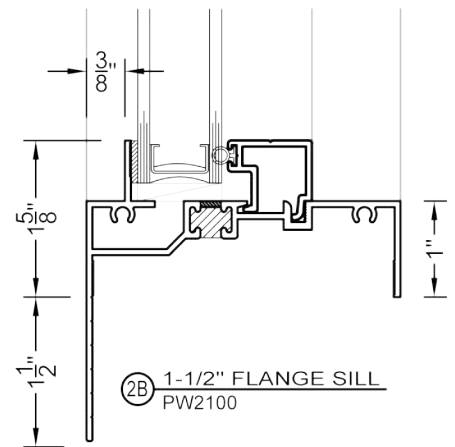
1B 1-1/2" FLANGE HEAD
PW2100



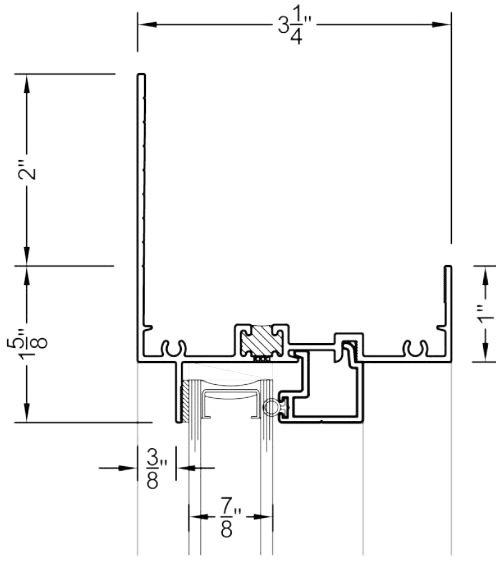
2 1/2" FLANGE SILL
PW2100



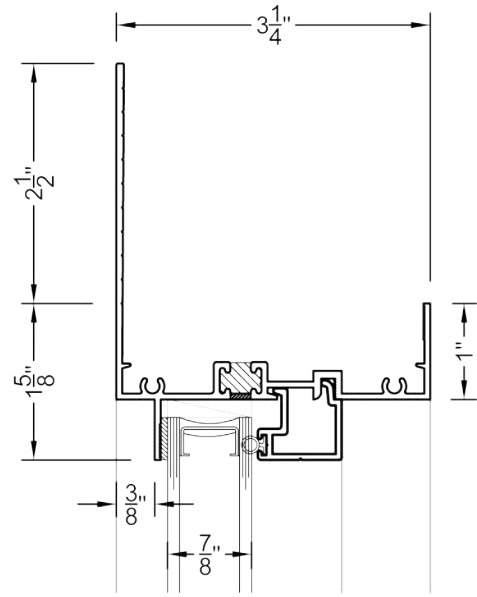
2A 1" FLANGE SILL
PW2100



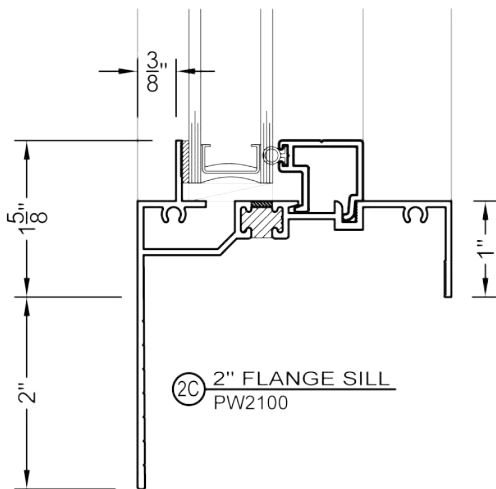
2B 1-1/2" FLANGE SILL
PW2100



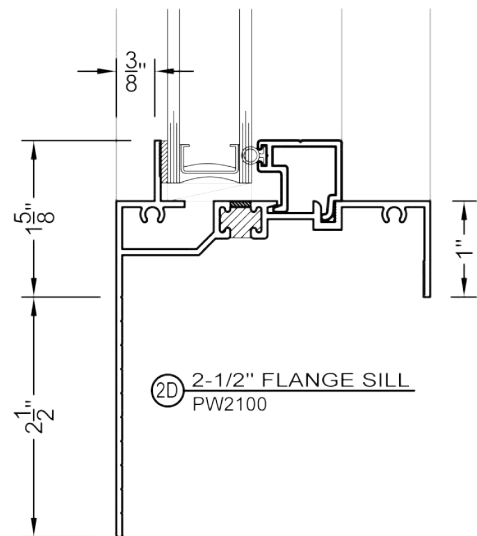
①C 2" FLANGE HEAD
 PW2100



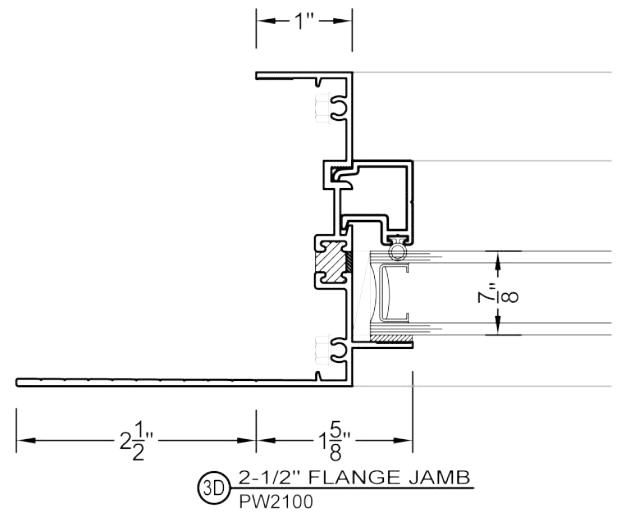
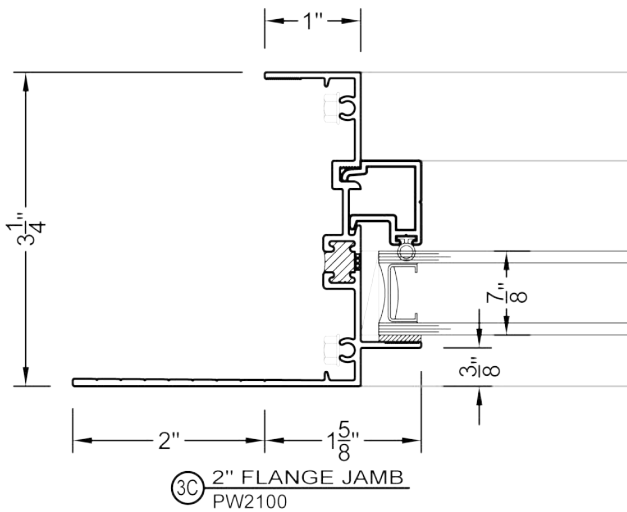
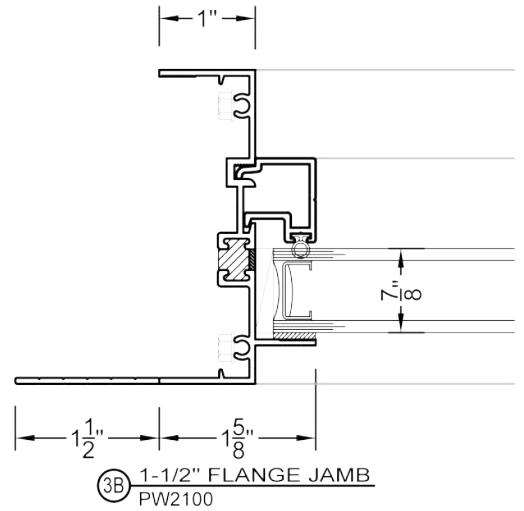
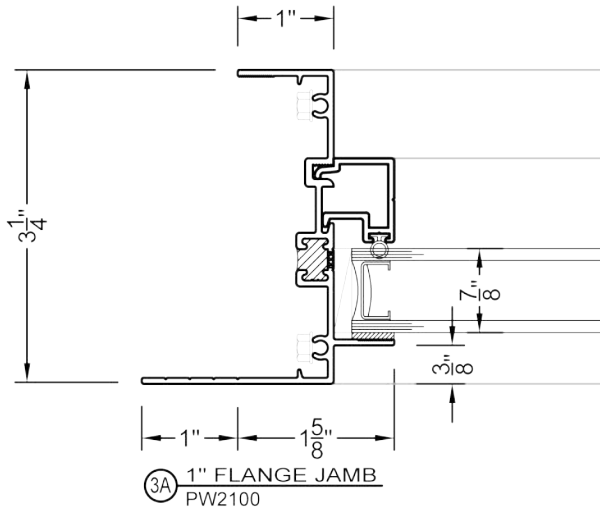
①D 2-1/2" FLANGE HEAD
 PW2100

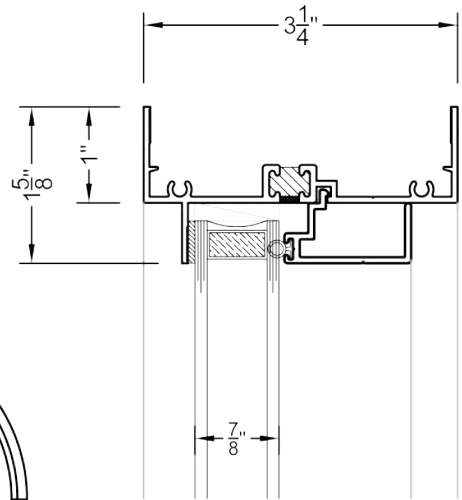
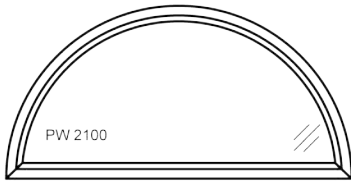


②C 2" FLANGE SILL
 PW2100

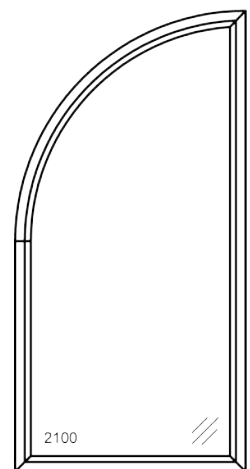
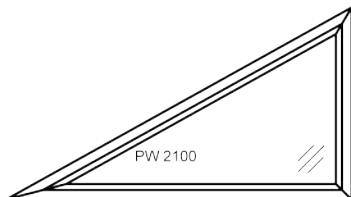
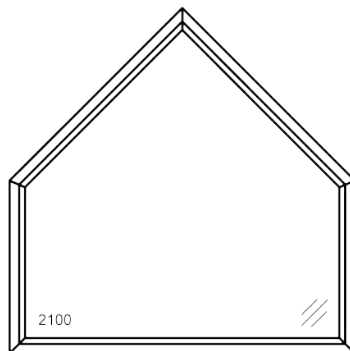
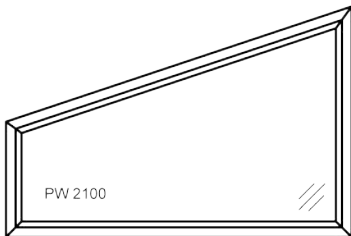
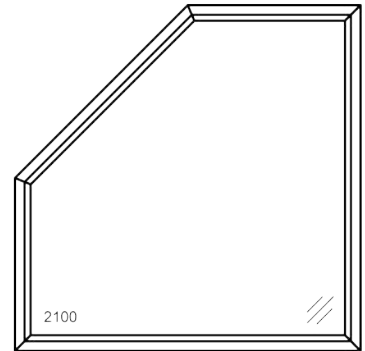
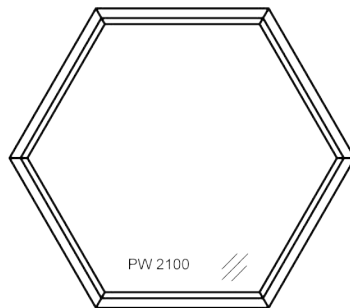
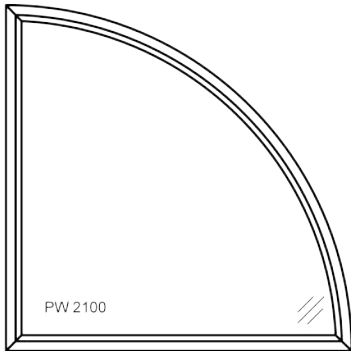
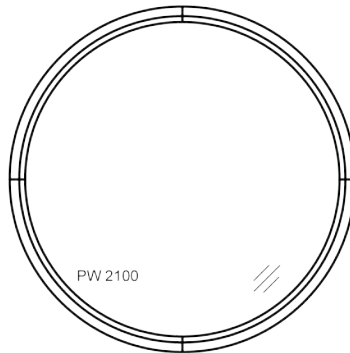
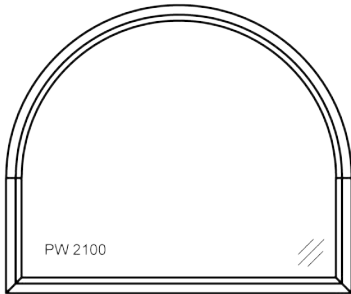


②D 2-1/2" FLANGE SILL
 PW2100





① ARCHITECTURAL SHAPE
 PW2100



VER: 2020.03

Architectural Colors for Aluminum Products

FINAL COLOR SELECTION SHOULD BE MADE FROM ACTUAL COLOR CHIPS

Bronze

White

Beige

Black

Ivory

Seawolf Beige

Simulated Anodized
Champagne

Simulated Anodized
Silver

Medium Gray

Charcoal Gray

Green

Aged Copper

Fairfax Brown

Red

River Rouge Red

Colonial Blue

NOTE: These colors are merely a few available from Crystal architectural products. Please contact your sales representative for more detailed information. These samples are as close as possible to actual color offered, within the limitations of color chip reproduction. Upcharge and Extended lead time apply based on quantity. Please ask your representative for more details.

► WHY POWDER COATING IS CRYSTAL'S CHOICE OF FINISH?

Powder coating is an advanced method of applying a decorative and protective finish to a wide range of materials and products that are used by both industries and consumers.

Powder coating is the fastest-growing finishing technology in North America, representing over 10% of all industrial finishing applications.

Powder coating gives consumers, businesses, and industry one of the most economical longest-lasting, and most color-durable quality finishes available.

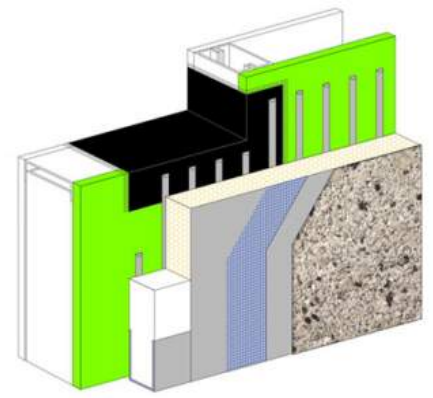
Powder coating is also highly protective of our environment. While liquid finishes contain solvents which have pollutants known as volatile organic compounds (VOC's), powder coating contains no solvents. Thus, there is no longer a need for finishers to buy costly pollution control equipment. In addition, most powder coating over-spray that does not adhere to the part can be retrieved and reused, virtually eliminating the waste commonly found in liquid finishing processes.

Queens, NY (HQ)
 St. Louis, MO
 Scranton, PA

P: 800.472.9988 F: 718.460.4594
 P: 636.305.7880 F: 636.305.7881
 P: 570.276.8000 F: 570.563.5313

Cleveland, OH
 Chicago, IL
 Riverside, CA

P: 440.871.8694 F: 440.871.8690
 P: 773.376.6688 F: 773.376.6868
 P: 951.779.9300 F: 951-779-6300



Since its introduction to the United States in 1969, Outsulation has become the standard of the industry by fulfilling requirements for design freedom, energy efficiency, weatherability, durability, beauty and cost effectiveness. The system has proven itself time and time again, over a broad range of applications and in climates from arctic to tropical. Though Dryvit has made many product improvements during that period, a key component, continuous insulation, has remained unchanged. Today, the Outsulation System continues to provide the rock-solid foundation for Dryvit's family of performance-based systems. In fact, one of every eleven commercial buildings in the United States is clad with Dryvit Outsulation. The Outsulation System is a proven high-performance cladding used all over the world and on a multitude of building configurations. It remains one of the most popular and effective cladding options available in commercial construction for all building uses.

DS447

A SYSTEM WITH MANY BENEFITS

Design freedom: The design options of the Outsulation System are virtually endless. Expanded polystyrene (EPS) can be cut or grooved to various shapes and surface patterns, is very light in weight and installs easily over a variety of substrates.

Energy efficiency: EPS acts as an insulating blanket (continuous insulation) on the outside of the building, where it is most effective, adding an additional R3.85 per inch to your wall assembly. Heating or cooling costs are demonstrably lower using Outsulation in lieu of other exterior materials.

Weatherability: Outsulation's system components provide a rainscreen of protection against wind and water – in all weather conditions. Dryvit's products are formulated to provide the utmost in weather protection.

Durability: An integral part of the system, fiberglass reinforcing mesh is available in a number of different strengths, meeting design requirements for impact resistance in virtually any location. The total wall system provides unsurpassed long-term durability.

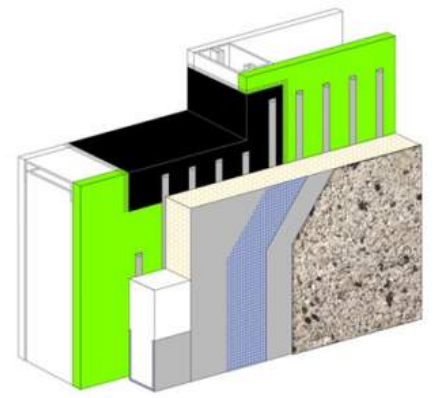
Beauty: Dryvit finishes are available in a wide array of textures. Colors? Your imagination is the limit. Even the look of natural stone, granite and brick is possible! All Dryvit finishes use Dirt Pickup Resistant (DPR) chemistry, ensuring the highest standard of weather, chemical and fade resistance.

Cost effective: Outsulation is easily adapted to complex project details. Installation is rapid, and routine maintenance is minimal. Outsulation is by far the most cost-effective exterior solution for almost any building – which is why it is the most widely used exterior cladding in commercial construction today.

Testing: As the pioneer and leader in construction technology, Dryvit has always considered stringent testing important; the Outsulation family of systems is no different. The Outsulation System has been fully tested on the widest possible spectrum of tests and is fully code compliant. Moreover, because Dryvit is the only manufacturer in its class, with all of its plants ISO 9001:2015 and ISO 14001:2015 certified, you know that Dryvit products are manufactured to the highest standards of quality and consistency. For more information on specific test criteria and results, please call customer service at the number listed below.

OUTSULATION®

An Exterior Wall Insulation and Finish System with Continuous Insulation



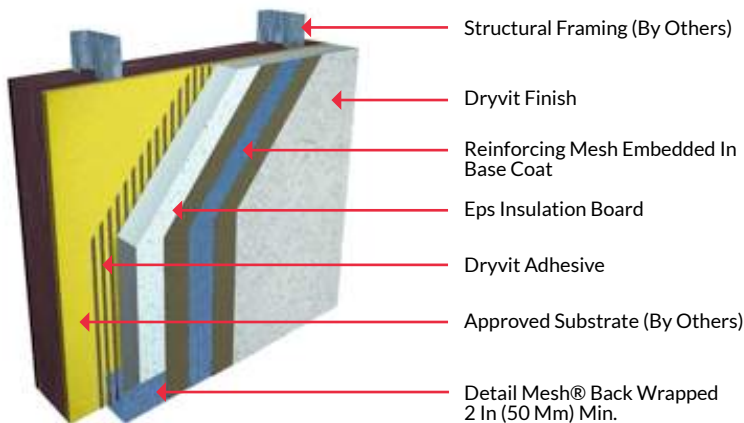
VERSATILE

The Outsulation System is extremely versatile and can accommodate a wide variety of design criteria. Specific requirements may call for different attachment methods, enhanced substrate protection or panelization. Outsulation is easily "modified" to meet these and other specific project needs. In fact, today there is almost no project which uses a "standard" system. When a job calls for something "out of the ordinary," Outsulation is often the best (if not the only) solution. Dryvit architectural sales managers, engineers and technical service representatives are ready to assist and offer suggestions. As well, Dryvit has a nationwide network of experienced and knowledgeable distributors to help with design, samples and installer recommendations.

THE OUTSULATION FAMILY OF PERFORMANCE-BASED SYSTEMS

Outsulation has performed admirably in North America for over 50 years and in Europe for 55. Market demand has created the need to engineer additional versions of the traditional system, which provide additional levels of protection against the elements and provide a means of egress for incidental moisture that may, for a variety of reasons, get behind the wall system. These engineered, tested systems include Outsulation Plus MD, Outsulation MD, Outsulation PE, and Infinity® which, along with "original" Outsulation, gives Dryvit the most comprehensive system solutions to any project needs. Architects can now specify exactly the right level of performance to suit the clients' demands.

DS447



Information contained in this product sheet conforms to the standard detail recommendations and specifications for the installation of Dryvit Systems, Inc. products as of the date of publication of this document and is presented in good faith. Dryvit Systems, Inc. assumes no liability, expressed or implied, as to the architecture, engineering or workmanship of any project. To ensure that you are using the latest, most complete information, contact Dryvit Systems, Inc.

For more information on [Dryvit Systems](#) or [Continuous Insulation](#), visit these links.

Printed in USA. Issued 10-04-16
©Dryvit Systems, Inc. 1998



Dryvit Systems, Inc.
One Energy Way | West Warwick, RI 02893
(800) 556-7752 | www.dryvit.com



VALE

FRP ENTRANCE SYSTEMS



UNEQUALLED IN DOOR - ABILITY



VALE DOORS

409 MACDADE BLVD..

COLLINGDALE, PA 19023

WWW.VALEDOORS.COM

E-MAIL: SALES@VALEDOORS.COM

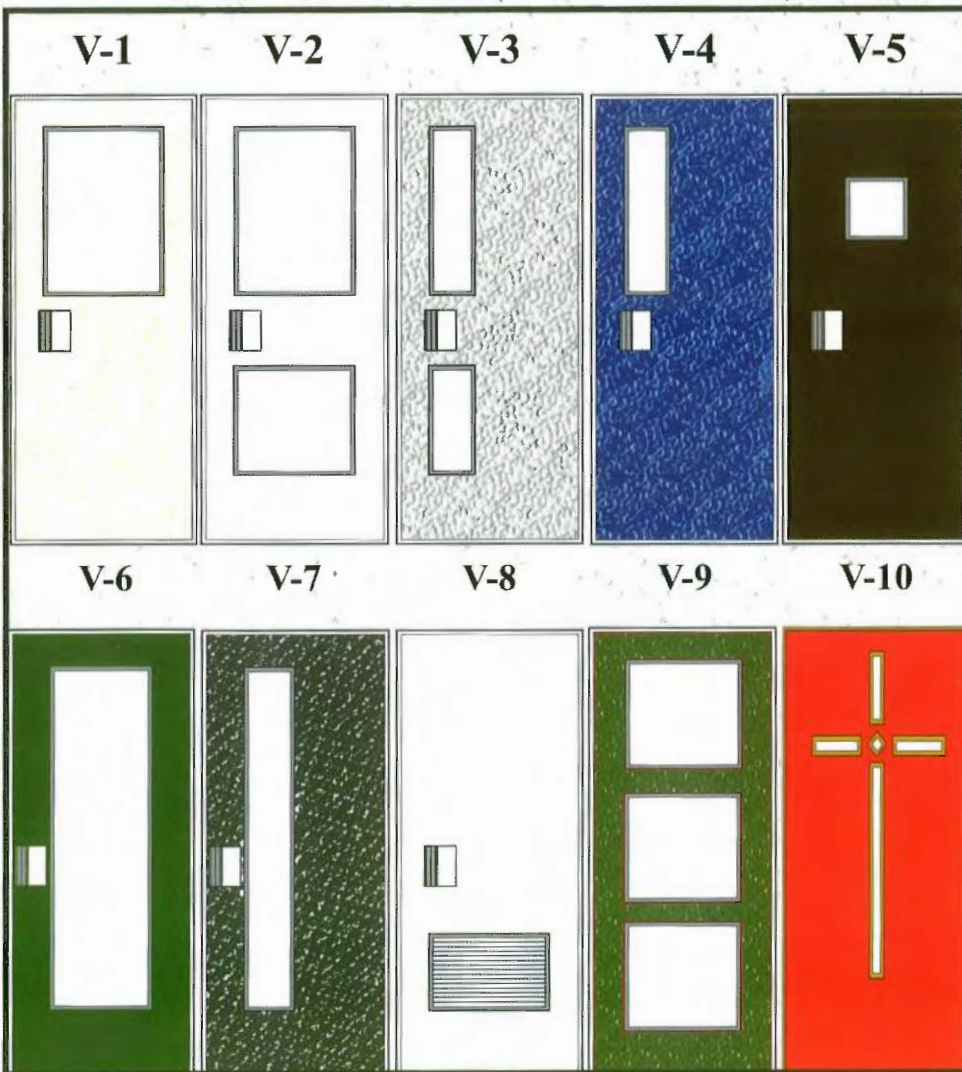
PH: 610-586-6500

FAX: 610-586-3580

Styles & Colors



13 Standard Colors (White Not Shown) Custom Colors Also Available



Custom Styles Also Available



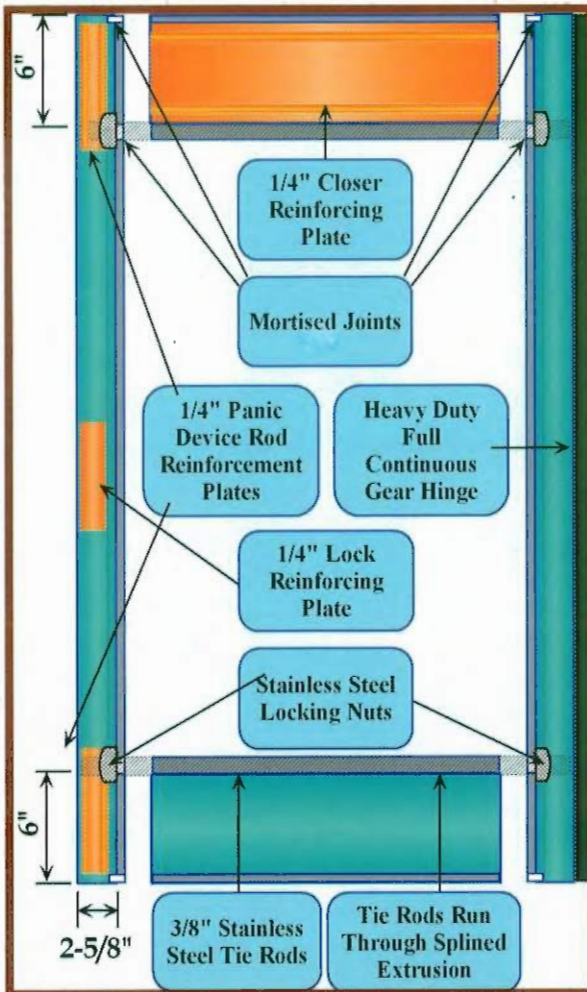
Unlimited Glass Area



Trim Available in: Dk. Bronze Anodized, Clear Satin Anodized, and Optional Painted Finishes

Leaves The Competition Behind

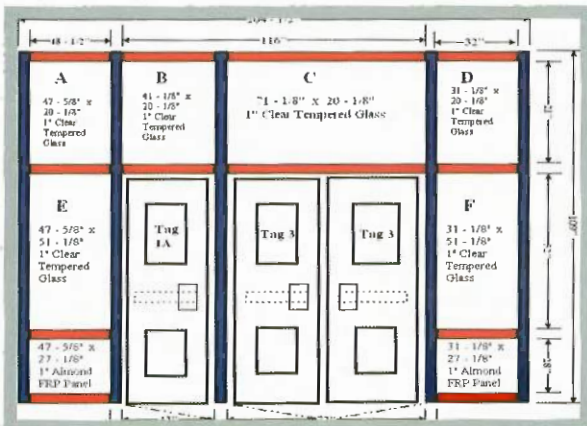
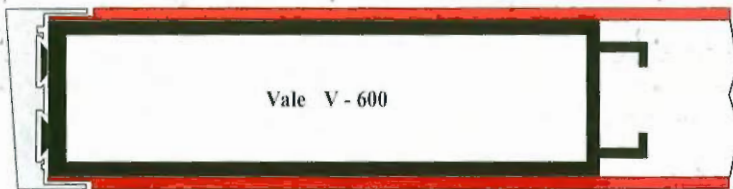
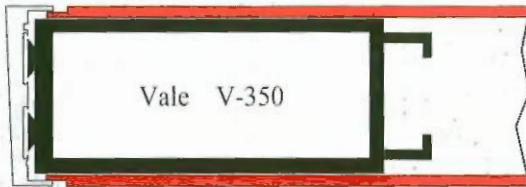
Here's Why



- Full 6" top rails, one piece .125" wall tube
- Full 6" bottom rails, one piece .125" wall tube
- Closer pull off 8,000lbs.
- Full .250" thick hardware reinforcement
- Single or Dual stainless steel tie rods
- 10 year warranty (25 year available)
- Twin pile sweeps
- Adjustable sweeps available
- Fire rated doors available, 20 to 90 minutes
- Infill panels available, 1" to 2"
- .032 core liners available
- Lite kits for 1/4" or 1" glazing in a variety of styles



Vale Sub Structure & Framing



Available Frame Sizes

- | | | |
|-------------|-------------|-----------------|
| 2" x 4" | 2" x 6" | 4 1/2" x 4 1/2" |
| 2" x 4 1/2" | 2" x 8" | 4" x 6" |
| 2" x 5" | 4" x 4 1/2" | 4 1/2" x 3 1/4" |