

VICINITY MAP
MAP NOT TO SCALE

LEGEND

R.O.W.	RIGHT OF WAY	MH	MANHOLE
No.	NUMBER	CB	CATCHBASIN
P.O.B.	POINT OF BEGINNING	—	SIGN
S.F.	SQUARE FEET	—	FENCE LINE
N/F	NOW OR FORMERLY	—	OVERHEAD WIRE, UTILITY POLE & GUY WIRE
N	NORTH	—	TRAFFIC FLOW ACCESS AREA
S	SOUTH	—	WATER SHUT OFF
E	EAST	—	WATER VALVE
W	WEST	—	HYDRANT
L	LIBER	—	GAS VALVE
P.	PAGE	—	STREET LIGHT
—ST—	STORM LINE	—	CONCRETE
—S—	SEWER LINE	—	PAVEMENT
—W—	WATER LINE	—	
—G—	GAS LINE	—	
—UE—	UNDERGROUND ELECTRIC	—	

**EXISTING SITE COVERAGE STATISTICS
LEASED AREA**

description	s.f.	acres	%
Total Area	22,338	0.51	100.0
Sub-Total Impervious Area	9,315	0.21	41.7
Building Area	0	0.00	0.0
Paved/Conc Area	9,315	0.21	41.7
Green Area	13,023	0.30	58.3

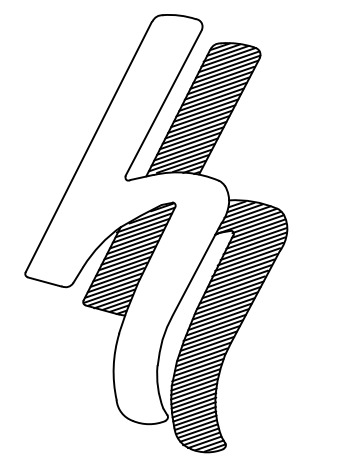
**EXISTING SITE COVERAGE STATISTICS
TOTAL AREA**

description	s.f.	acres	%
Total Area	119,475	2.74	100.0
Sub-Total Impervious Area	86,635	1.99	58.3
Building Area	11,836	0.27	8.1
Paved/Conc Area	74,799	1.72	51.2
Green Area	32,640	0.75	27.5

DRAWING INDEX

DRAWING INDEX	SHEET NAME
C1	EXISTING CONDITIONS
C2	DEMOLITION PLAN
C3	SITE PLAN
C4	SITE DETAILS
C5	UTILITY PLAN
C6	UTILITY DETAILS 1
C7	UTILITY DETAILS 2
C8	EROSION AND SEDIMENT CONTROL PLAN
C9	EROSION AND SEDIMENT CONTROL DETAILS
C10	LANDSCAPING PLAN
C11	MAINTENANCE AND PROTECTION OF TRAFFIC PLAN
C12	TRUCK ROUTING PLAN
C13	OVERALL AREA PLAN

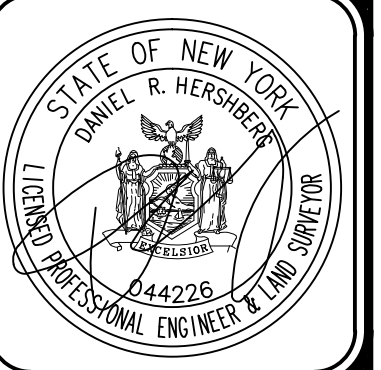
FOR MUNICIPAL APPROVAL ONLY-NOT INTENDED FOR CONSTRUCTION



HERSHBERG & HERSHBERG
Consulting Engineers and Land Surveyors

18 Locust Street
Albany, New York 12203

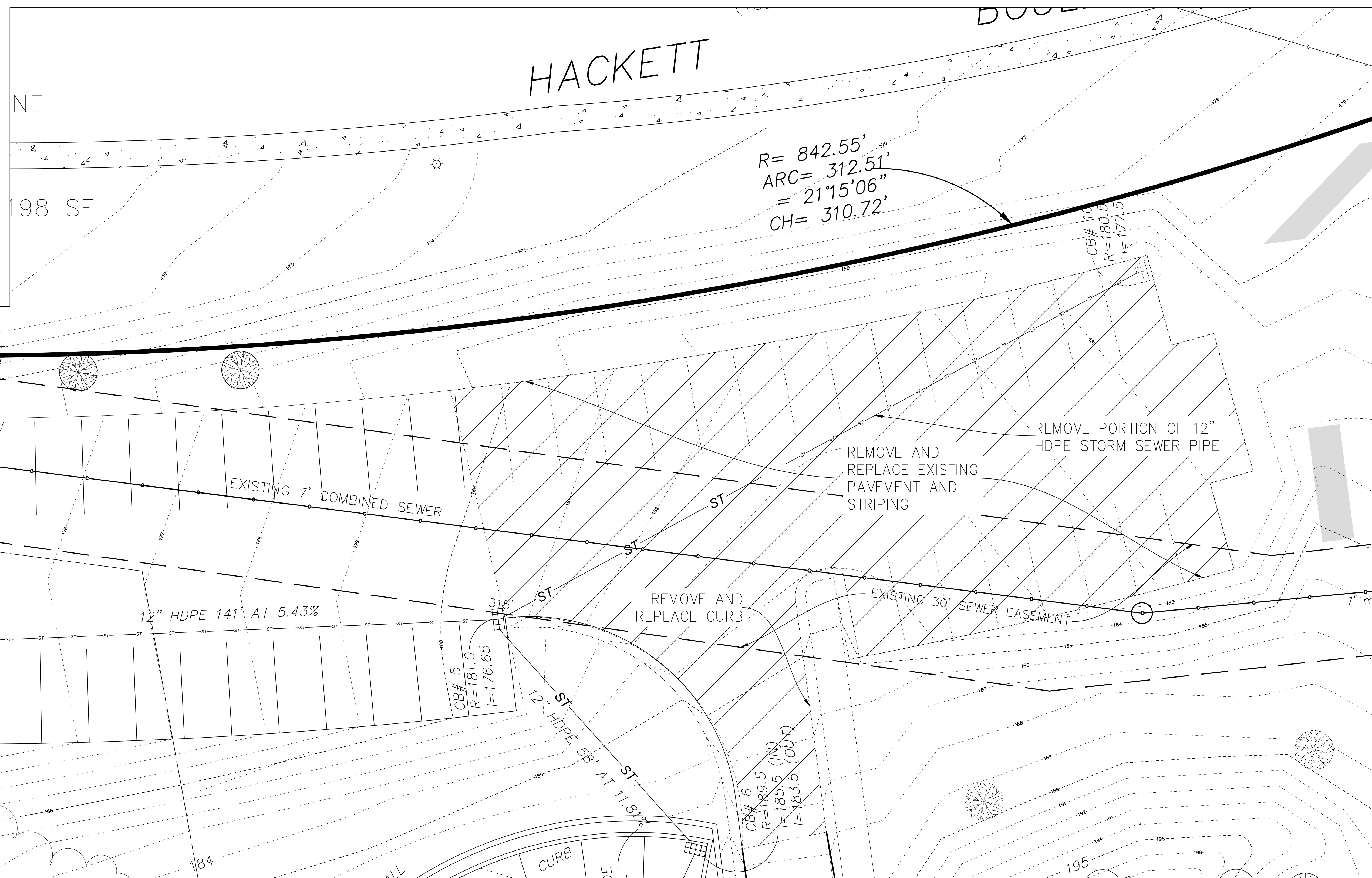
ALTERATION OF THIS DOCUMENT EXCEPT BY A LICENSED PROFESSIONAL ENGINEER OR LAND SURVEYOR, IS ILLEGAL



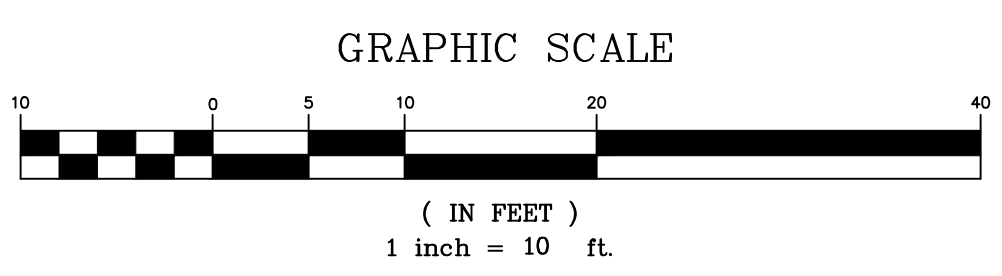
DATE	REVISIONS

EXISTING CONDITIONS PLAN
22 HOLLAND AVENUE
CITY OF ALBANY, STATE OF NEW YORK

LEGEND			
R.O.W.	RIGHT OF WAY	MHO	MANHOLE
No.	NUMBER	CB	CATCHBASIN
P.O.B.	POINT OF BEGINNING	SIGN	SIGN
S.F.	SQUARE FEET	FENCE LINE	FENCE LINE
N/F	NOW OR FORMERLY	OVERHEAD WIRE, UTILITY POLE & GUY WIRE	OVERHEAD WIRE, UTILITY POLE & GUY WIRE
N	NORTH	TRAFFIC FLOW ACCESS AREA	TRAFFIC FLOW ACCESS AREA
S	SOUTH	WATER SHUT OFF	WATER SHUT OFF
E	EAST	WATER VALVE	WATER VALVE
W	WEST	HYDRANT	HYDRANT
L	LIBER	GAS VALVE	GAS VALVE
P.	PAGE	STREET LIGHT	STREET LIGHT
ST	STORM LINE	CONCRETE	CONCRETE
S	SEWER LINE	NEW PAVEMENT	NEW PAVEMENT
W	WATER LINE		
G	GAS LINE		
UE	UNDERGROUND ELECTRIC		
- - -	PROPOSED CONTOURS		

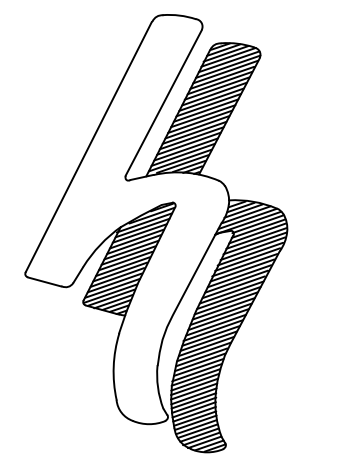


$$\begin{aligned}
 R &= 842.55' \\
 \text{ARC} &= 312.51' \\
 &= 21^{\circ}15'06'' \\
 \text{CH} &= 310.72'
 \end{aligned}$$



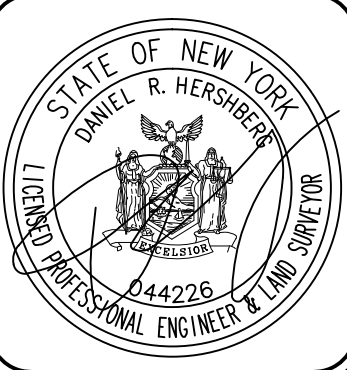
DEMOLITION NOTES

- COORDINATE ALL REMOVALS WITH CONSTRUCTION SCHEDULE AND OWNER. MAINTAIN OPERATION OF EXISTING FACILITY THROUGHOUT CONSTRUCTION.
- VERIFY ALL UTILITIES WHICH HAVE BEEN ABANDONED ARE NOT ACTIVE. RECONNECT ANY ACTIVE UTILITY LINES FOUND.



HERSHBERG & HERSHBERG
 Consulting Engineers and Land Surveyors
 18 Locust Street
 Albany, New York 12203

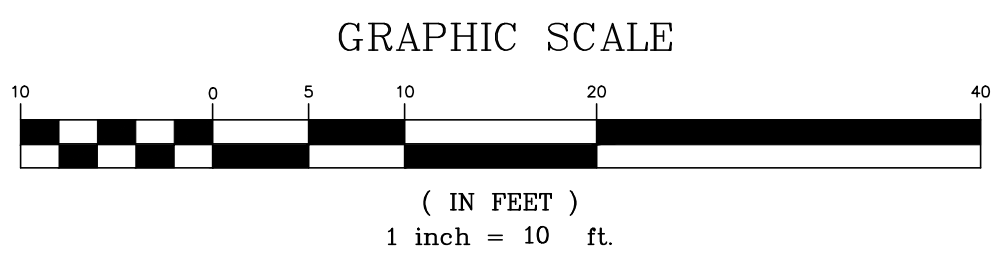
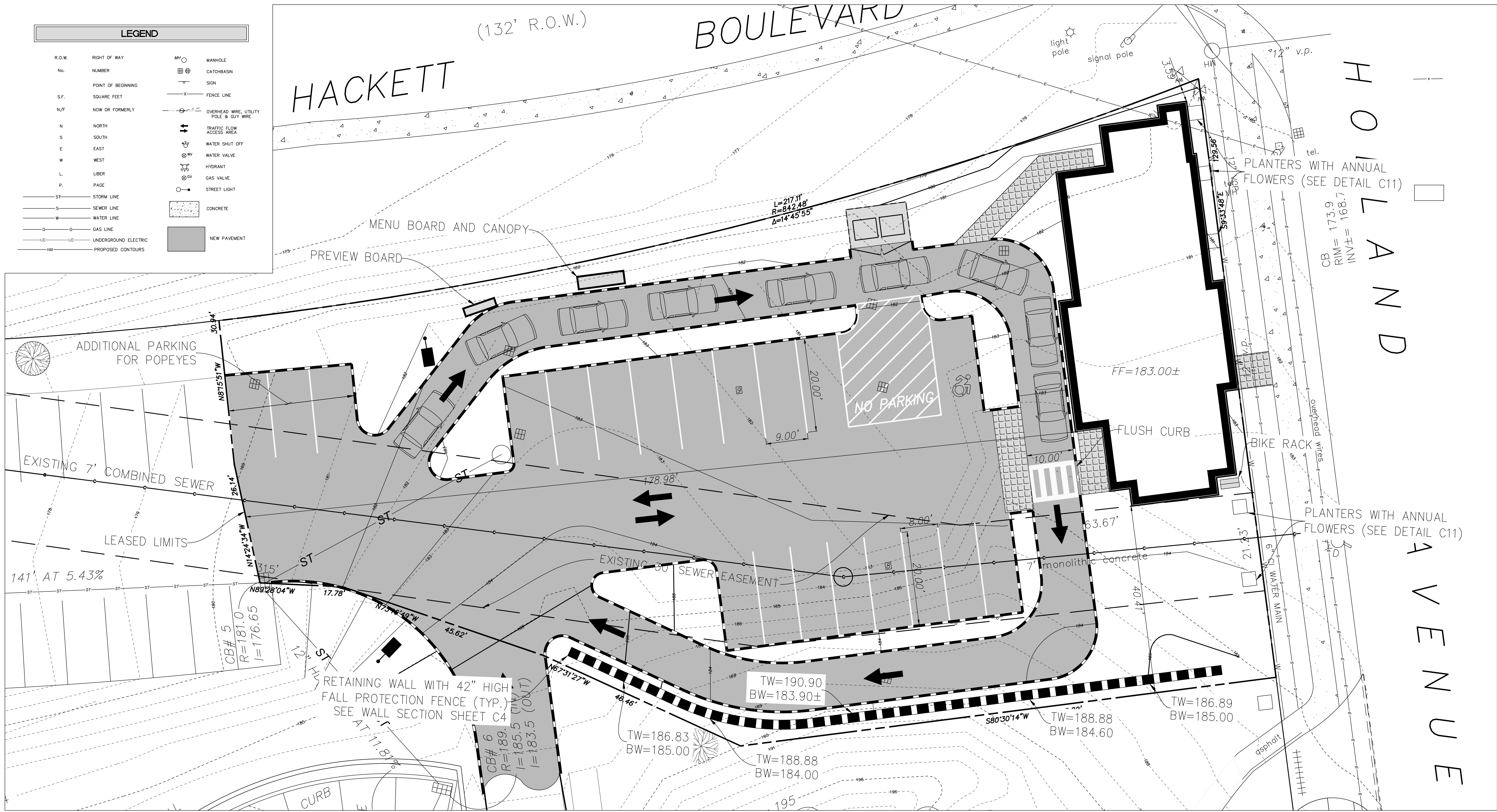
ALTERATION OF THIS DOCUMENT EXCEPT BY A LICENSED PROFESSIONAL ENGINEER OR LAND SURVEYOR, IS ILLEGAL.



DATE	REVISIONS

DEMOLITION PLAN
22 HOLLAND AVENUE
CITY OF ALBANY, STATE OF NEW YORK

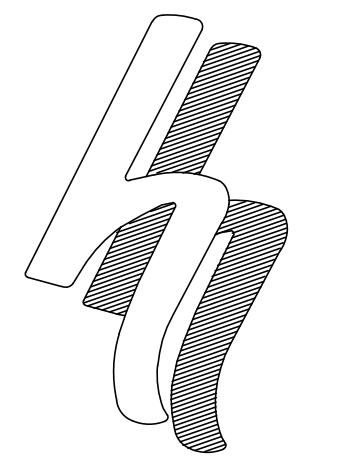
LEGEND			
R.O.W.	RIGHT OF WAY	MHO	MANHOLE
No.	NUMBER	CB	CATCHBASIN
S.F.	SQUARE FEET	ST	SIGN
N/F	NOW OR FORMERLY	---	FENCE LINE
N	NORTH	---	OVERHEAD WIRE, UTILITY POLE & GUY WIRE
S	SOUTH	---	TRAFFIC FLOW ACCESS AREA
E	EAST	---	WATER SHUT OFF
W	WEST	---	WATER VALVE
L	LIBER	---	HYDRANT
P.	PAGE	---	GAS VALVE
ST	STORM LINE	---	STREET LIGHT
S	SEWER LINE	---	CONCRETE
W	WATER LINE	---	NEW PAVEMENT
G	GAS LINE	---	
UE	UNDERGROUND ELECTRIC	---	
---	PROPOSED CONTOURS	---	



PARKING TABLE:

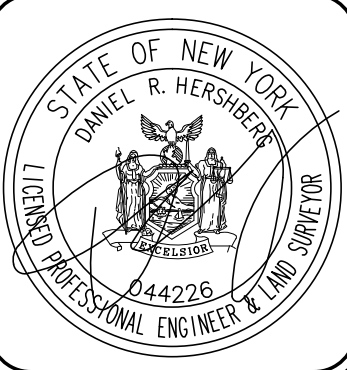
REQUIRED PARKING RESTAURANT (2472 SF)	1 PER 150 SF	17
SUBTOTAL		17
TOTAL PARKING PROVIDED		20
TOTAL REQUIRED		17
OUTDOOR BICYCLE PARKING		3

PROPOSED SITE COVERAGE STATISTICS LEASED AREA			
description	s.f.	acres	%
Total Area	22,338	0.51	100.0
Sub-Total Impervious Area	15,580	0.36	69.7
Building Area	2,472	0.06	11.1
Paved/Conc Area	13,108	0.30	58.6
Green Area	6,632	0.15	30.3



HERSHBERG & HERSHBERG
Consulting Engineers and Land Surveyors
18 Locust Street
Albany, New York 12203

ALTERATION OF THIS DOCUMENT EXCEPT BY A LICENSED PROFESSIONAL ENGINEER OR LAND SURVEYOR, IS ILLEGAL

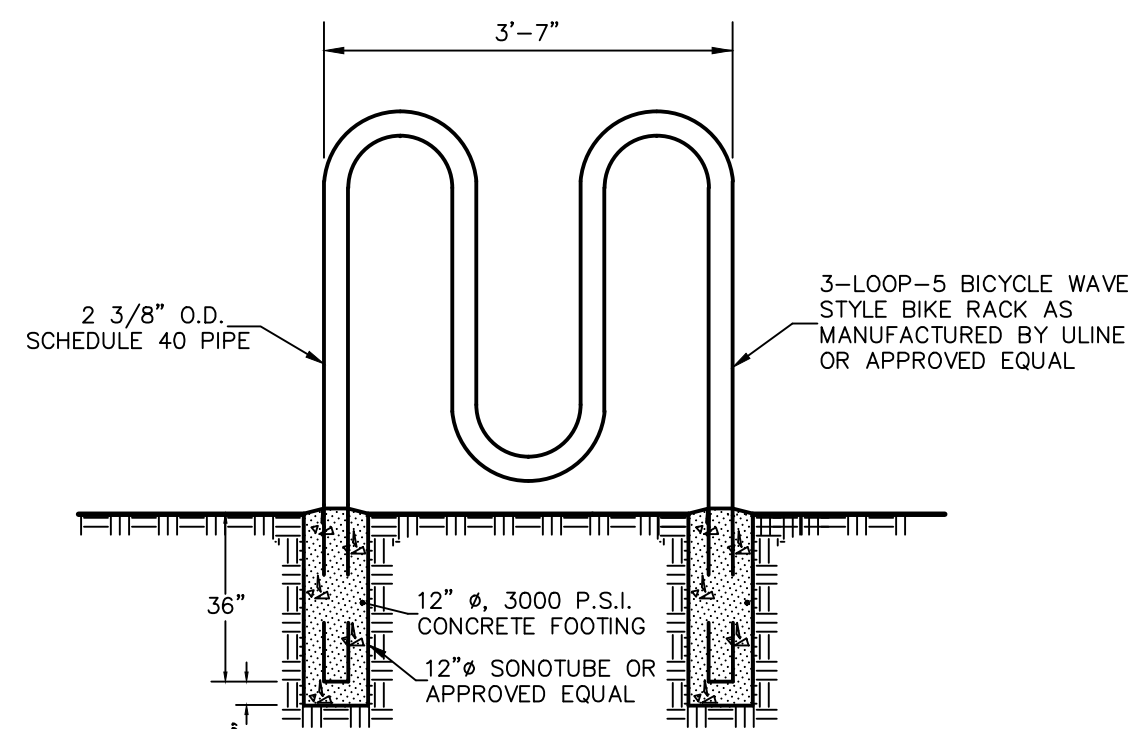


DATE	REVISIONS

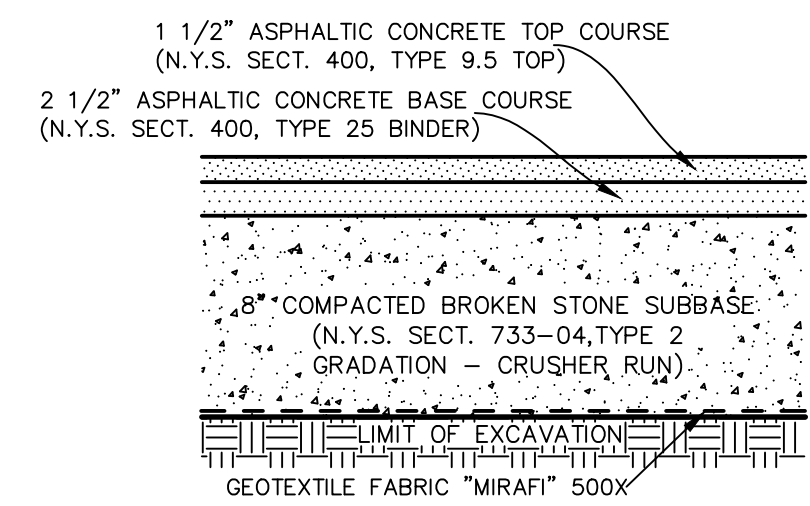
SITE PLAN
22 HOLLAND AVENUE
CITY OF ALBANY, STATE OF NEW YORK

DATE: 9/14/20
CHK: DRH
BY: MJP
SCALE: AS NOTED
FILE: 200233

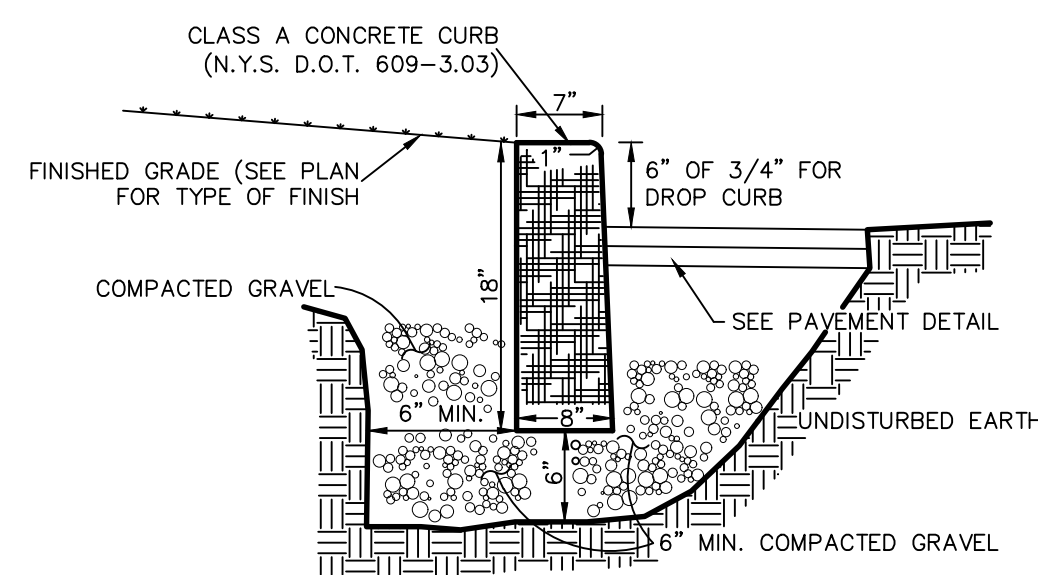
FOR MUNICIPAL APPROVAL ONLY-NOT INTENDED FOR CONSTRUCTION



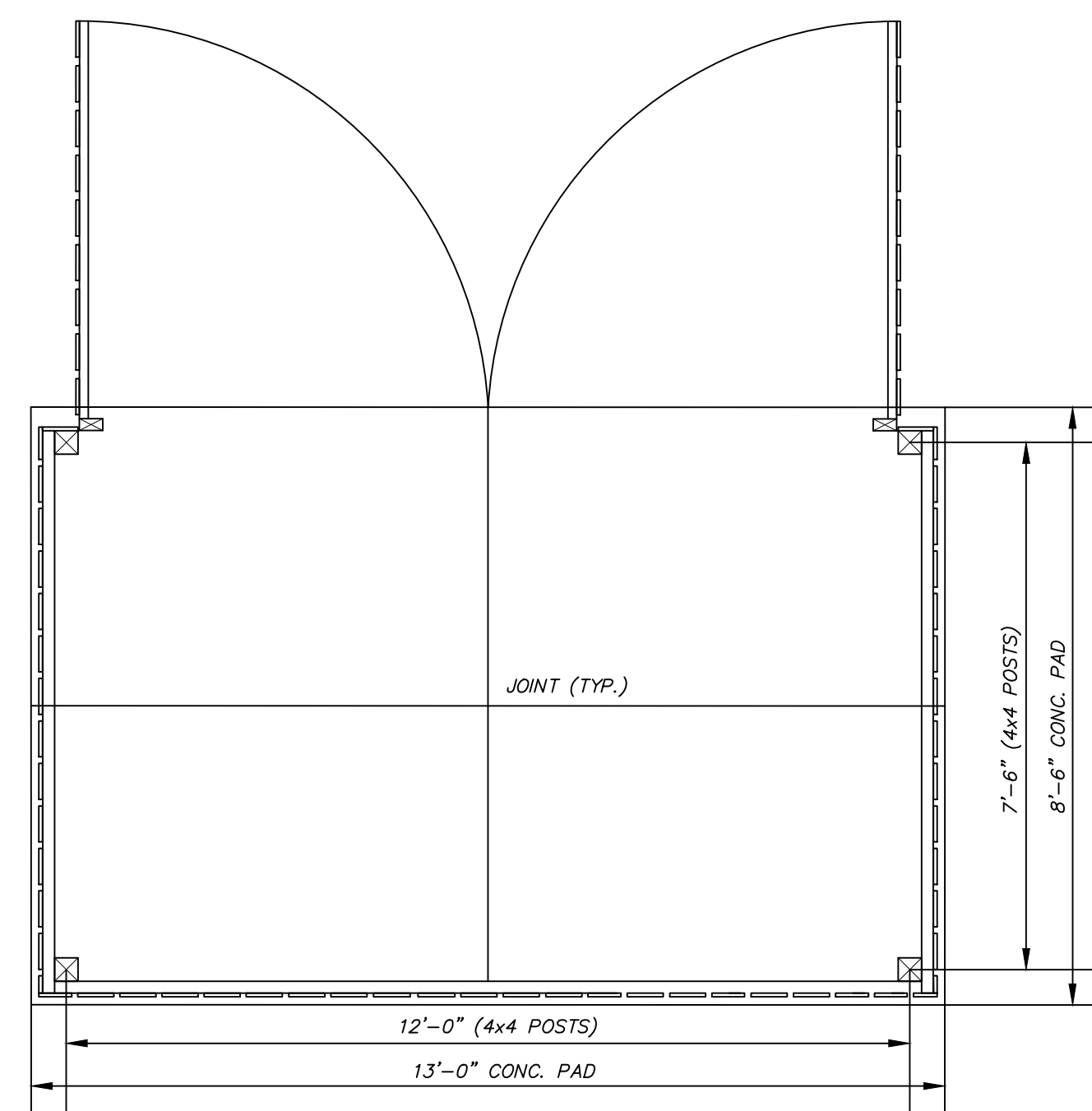
BICYCLE LOOP RACK DETAIL
NOT TO SCALE



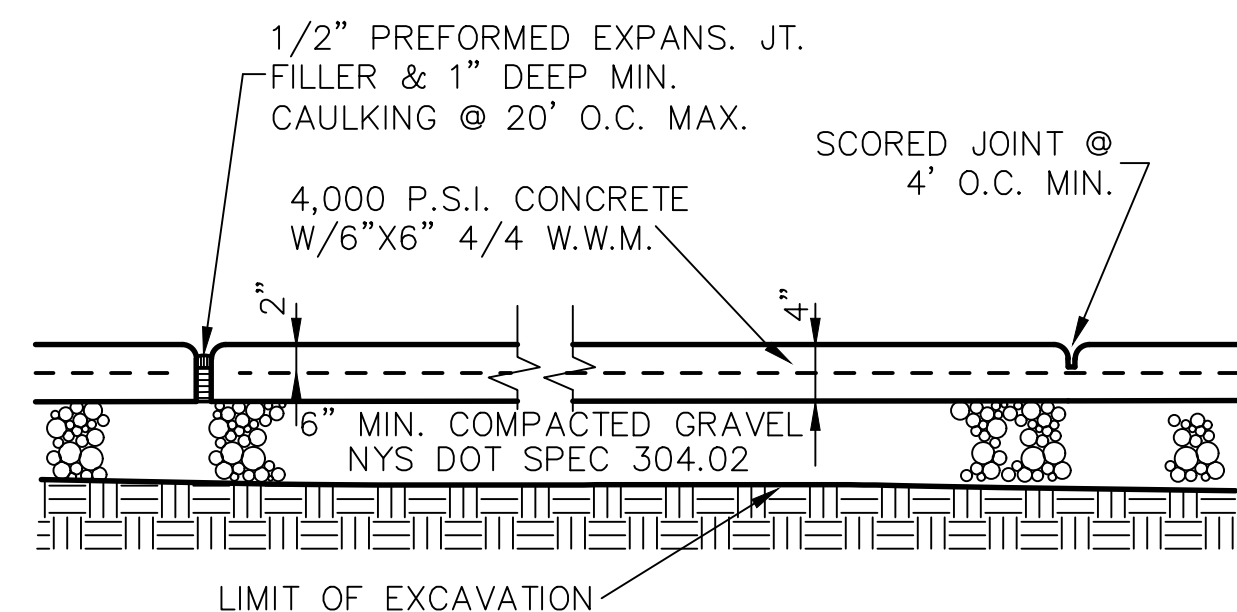
PAVEMENT DETAIL
NOT TO SCALE



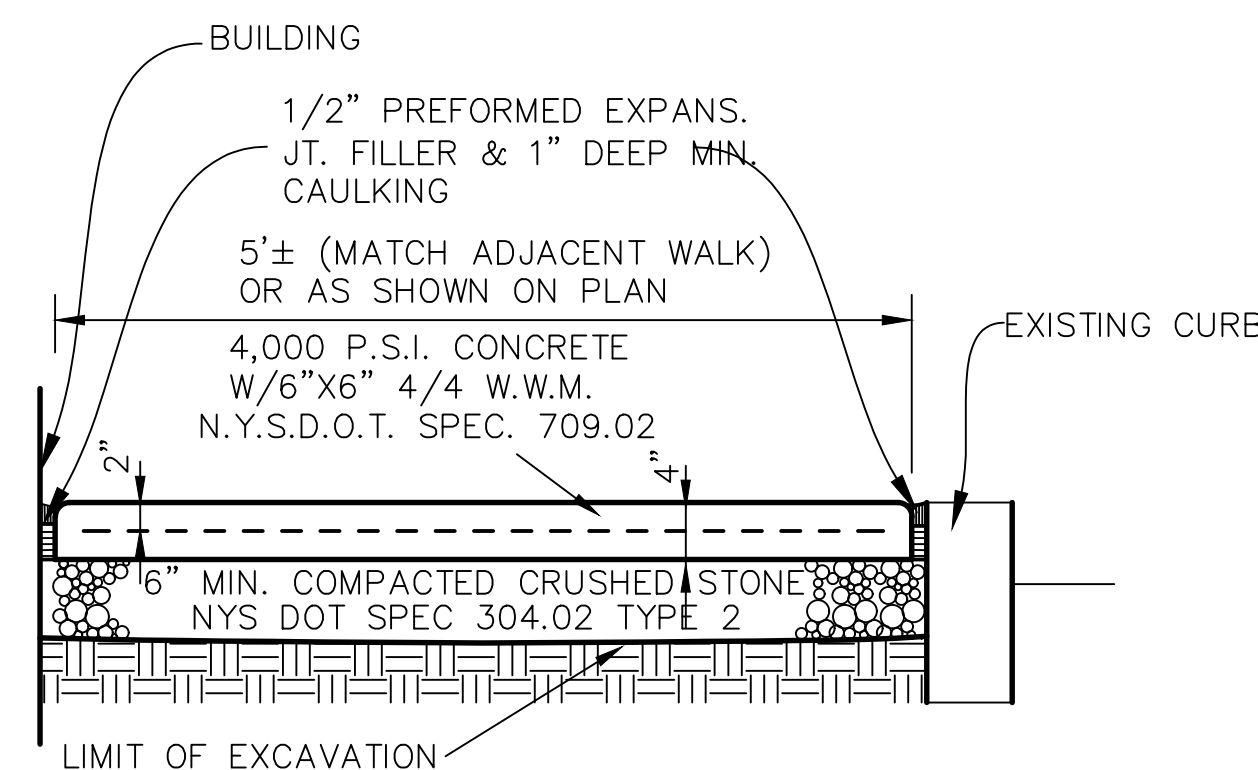
**CONCRETE CURB
(CAST IN PLACE) DETAIL**
NOT TO SCALE



TRASH ENCLOSURE
NOT TO SCALE



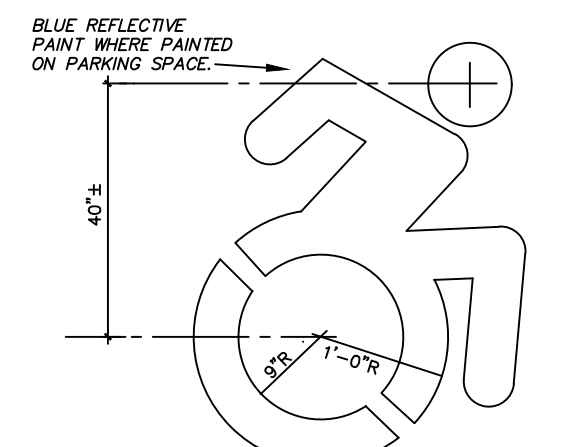
LONGITUDINAL SECTION



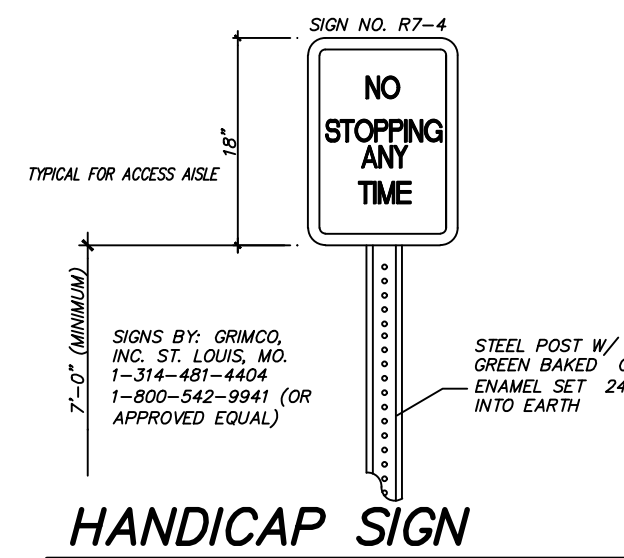
CROSS SECTION

CONCRETE WALK

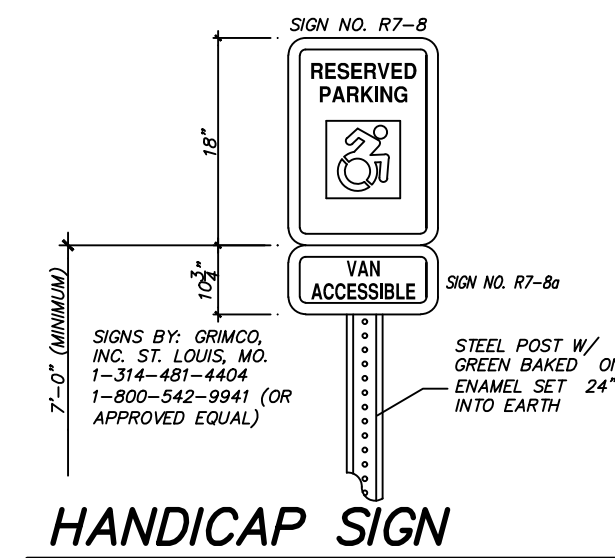
NOT TO SCALE



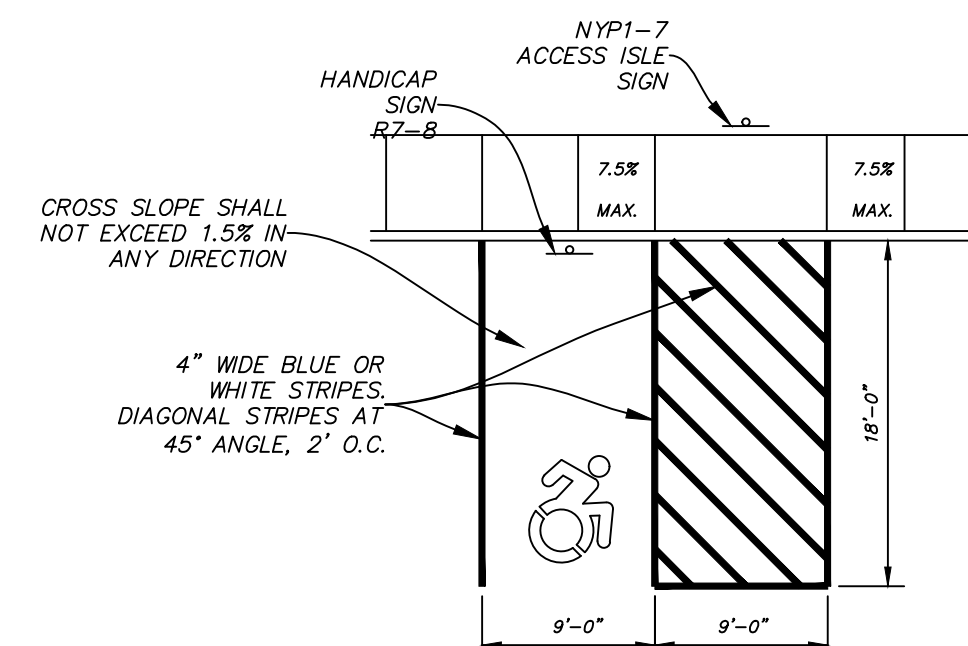
HANDICAP SYMBOL
NOT TO SCALE



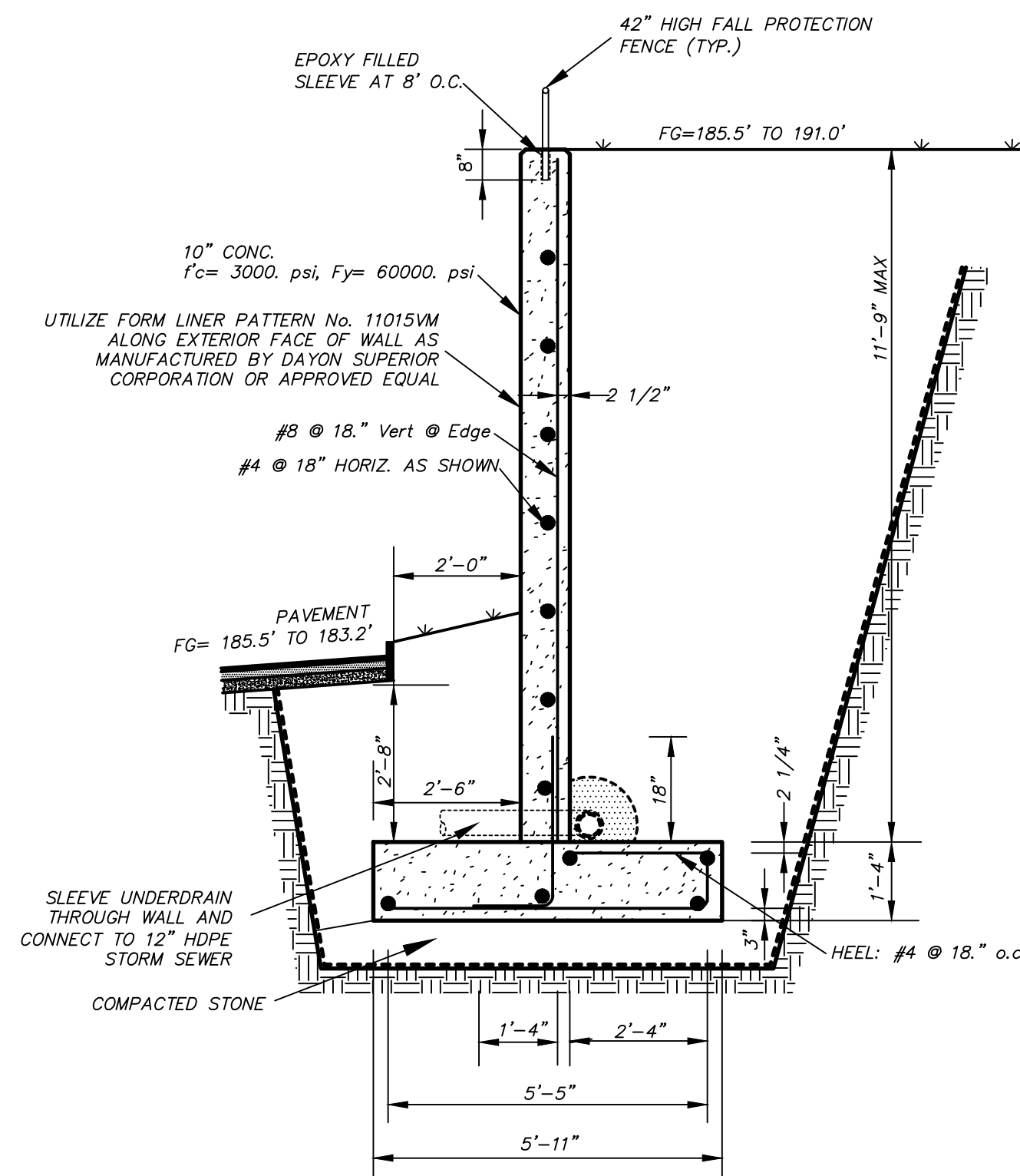
HANDICAP SIGN



HANDICAP SIGN



HANDICAPPED PAVEMENT STRIPING DETAIL
NOT TO SCALE

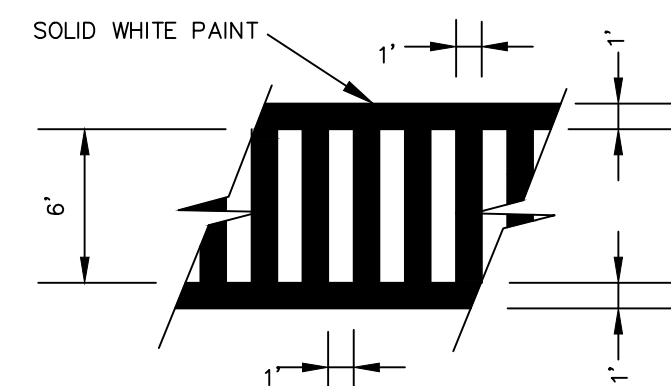


NOTE: MINIMUM OVERLAP ON REBARS TO BE 18"

- RAILING NOTES:
1. RAIL TO BE SET IN A GALVANIZED STEEL SLEEVE WITH EPOXY FILLER
 2. SUBMIT SHOP DRAWINGS FOR ALL MATERIALS TO BE USED AT RAILINGS FOR APPROVAL
 3. ALL HANDRAILS SHALL BE FINISHED WITH 1 COAT RUSTPROOF & 2 COATS OF EXTERIOR BASE ENAMEL, COMPATIBLE WITH GALVANIZED COATING. COLOR TO BE SELECTED BY THE ARCHITECT.

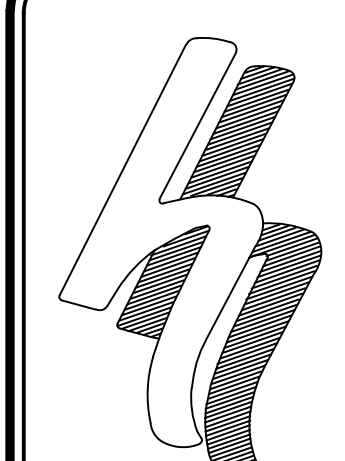
CONCRETE WALL

NOT TO SCALE



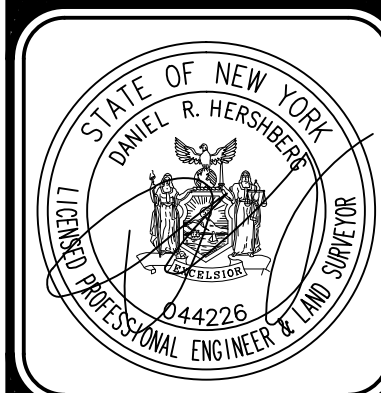
CROSSWALK MARKING

NOT TO SCALE



HERSHBERG & HERSHBERG
Consulting Engineers and Land Surveyors
18 Locust Street
Albany, New York 12203

ALTERATION OF THIS DOCUMENT EXCEPT BY A LICENSED PROFESSIONAL ENGINEER OR LAND SURVEYOR, IS ILLEGAL

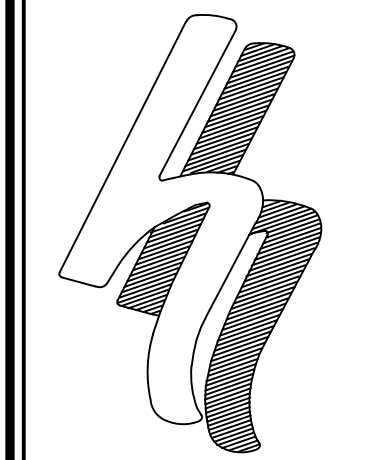
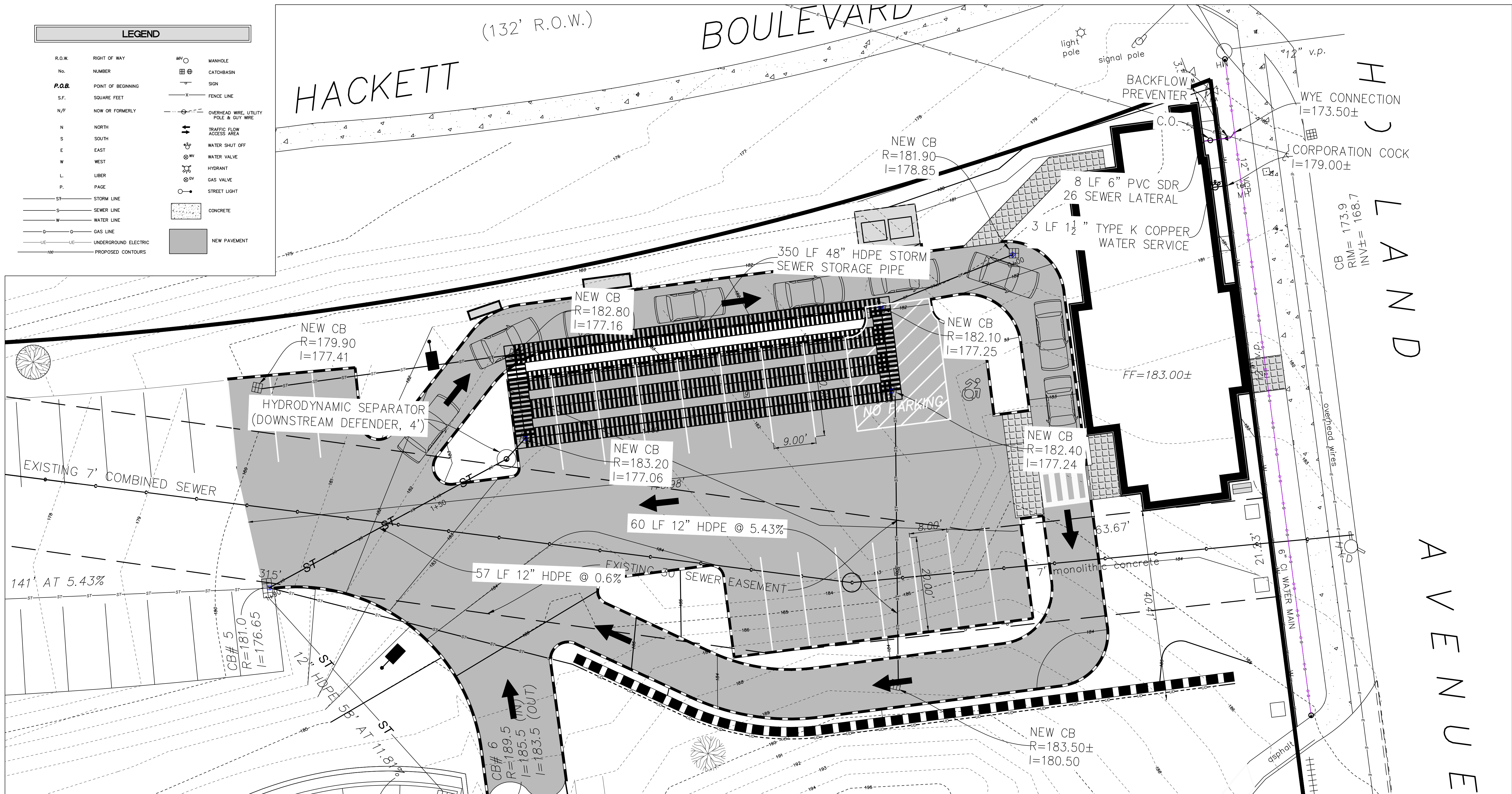


DATE	REVISIONS

SITE PLAN DETAILS
22 HOLLAND AVENUE
CITY OF ALBANY, STATE OF NEW YORK

SCALE: AS NOTED
DATE: 9/14/20
CHK: DRH
BY: MJB
FILE: 200233

LEGEND			
R.O.W.	RIGHT OF WAY	MHO	MANHOLE
No.	NUMBER	CB	CATCHBASIN
P.O.B.	POINT OF BEGINNING	—	SIGN
S.F.	SQUARE FEET	—	FENCE LINE
N/F	NOW OR FORMERLY	—	OVERHEAD WIRE, UTILITY POLE & GUY WIRE
N	NORTH	—	TRAFFIC FLOW ACCESS AREA
S	SOUTH	—	WATER SHUT OFF
E	EAST	—	WATER VALVE
W	WEST	—	HYDRANT
L	LIBER	—	GAS VALVE
P.	PAGE	—	STREET LIGHT
ST	STORM LINE	—	CONCRETE
S	SEWER LINE	—	NEW PAVEMENT
W	WATER LINE	—	
G	GAS LINE	—	
UE	UNDERGROUND ELECTRIC	—	
—	PROPOSED CONTOURS	—	



HERSHBERG & HERSHBERG
 Consulting Engineers and Land Surveyors
 18 Locust Street
 Albany, New York 12203

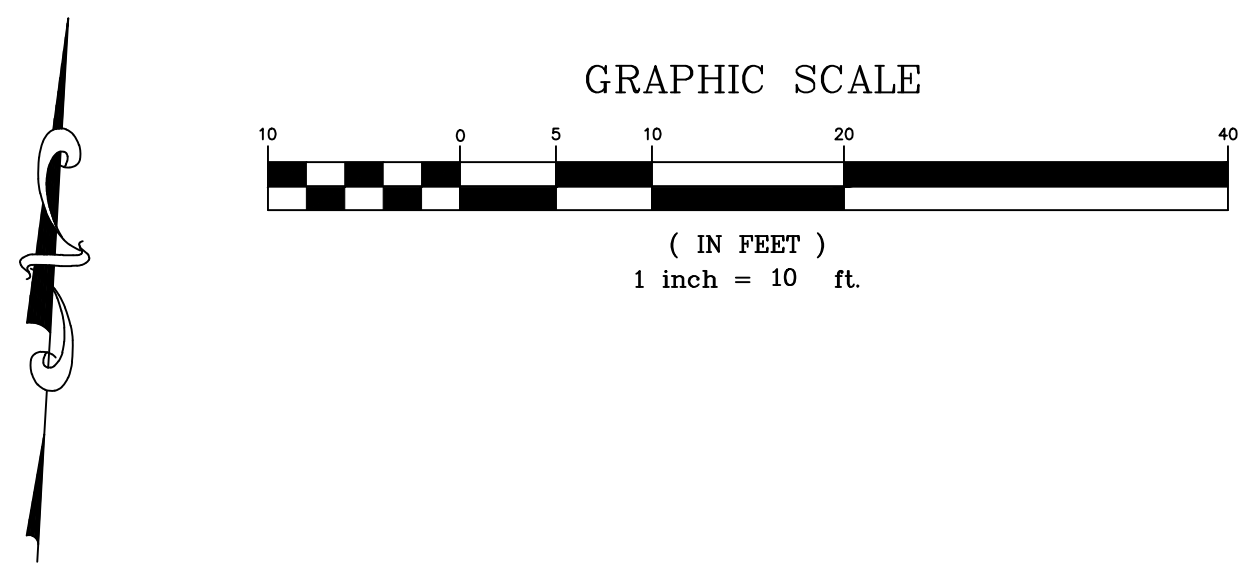
ALTERATION OF THIS DOCUMENT EXCEPT BY A LICENSED PROFESSIONAL ENGINEER OR LAND SURVEYOR, IS ILLEGAL



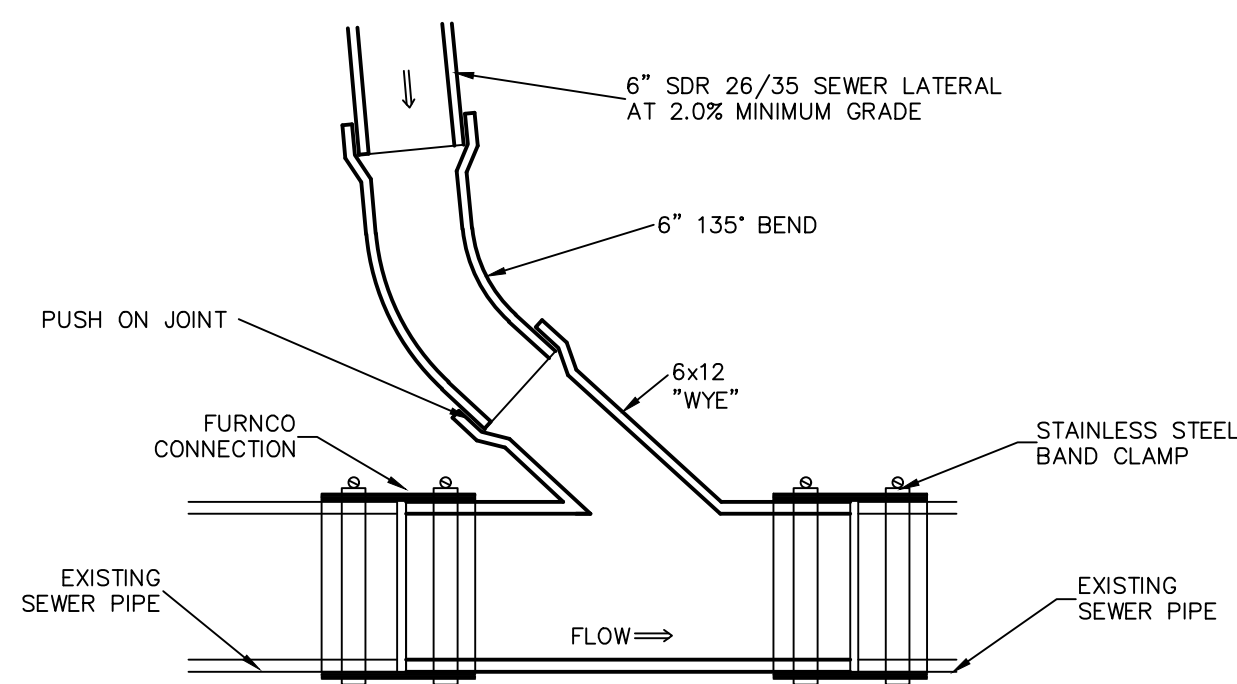
DATE	REVISIONS

UTILITY PLAN
 22 HOLLAND AVENUE
 CITY OF ALBANY, STATE OF NEW YORK

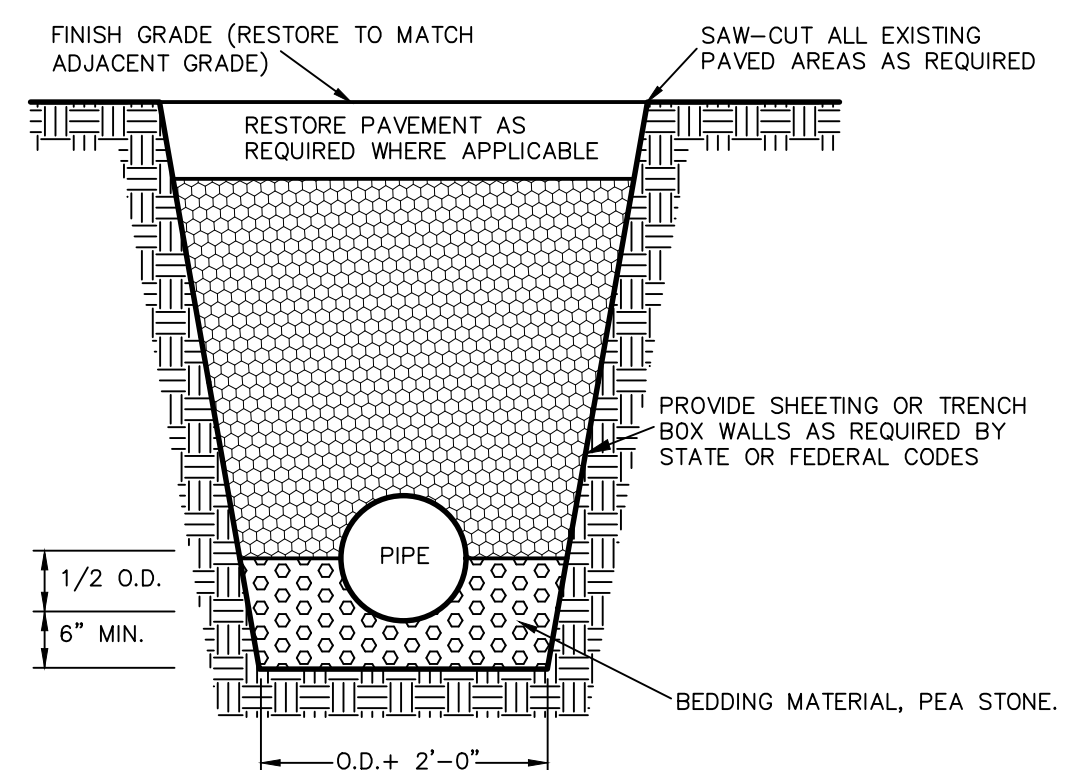
SCALE: AS NOTED
 DATE: 9/14/20
 FILE: 200233



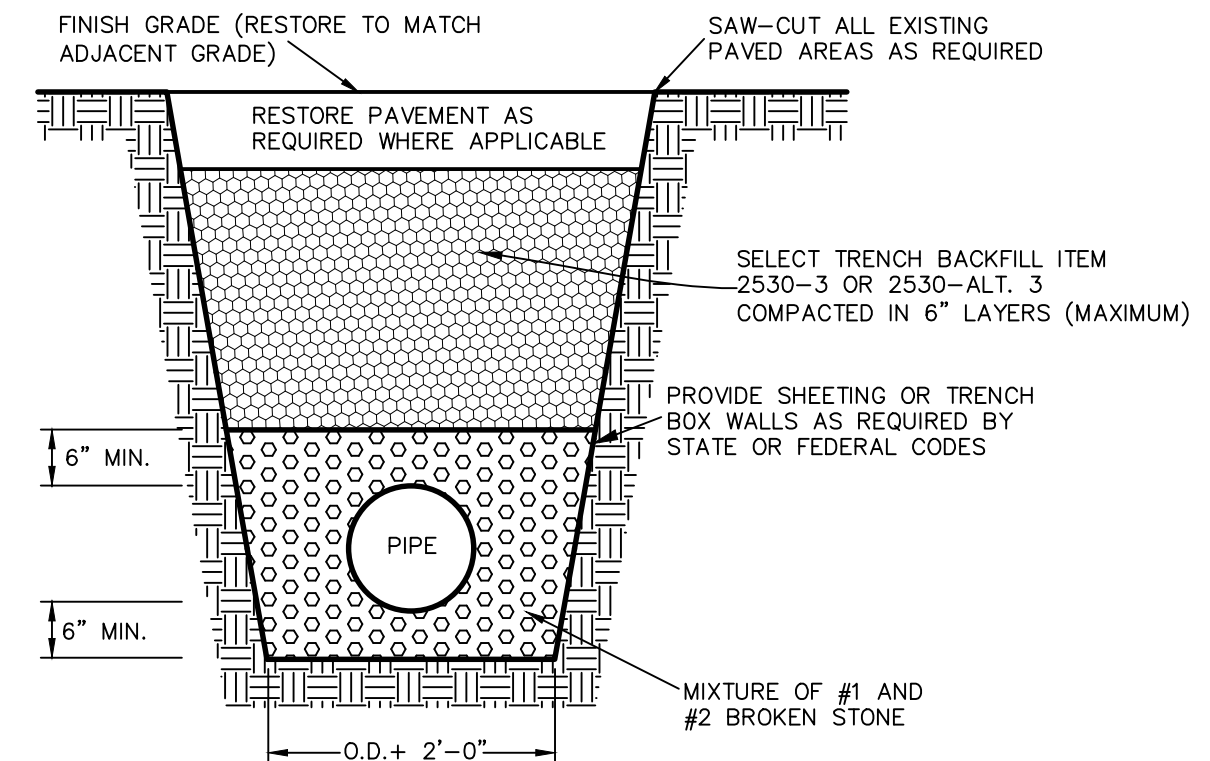
FOR MUNICIPAL APPROVAL ONLY-NOT INTENDED FOR CONSTRUCTION



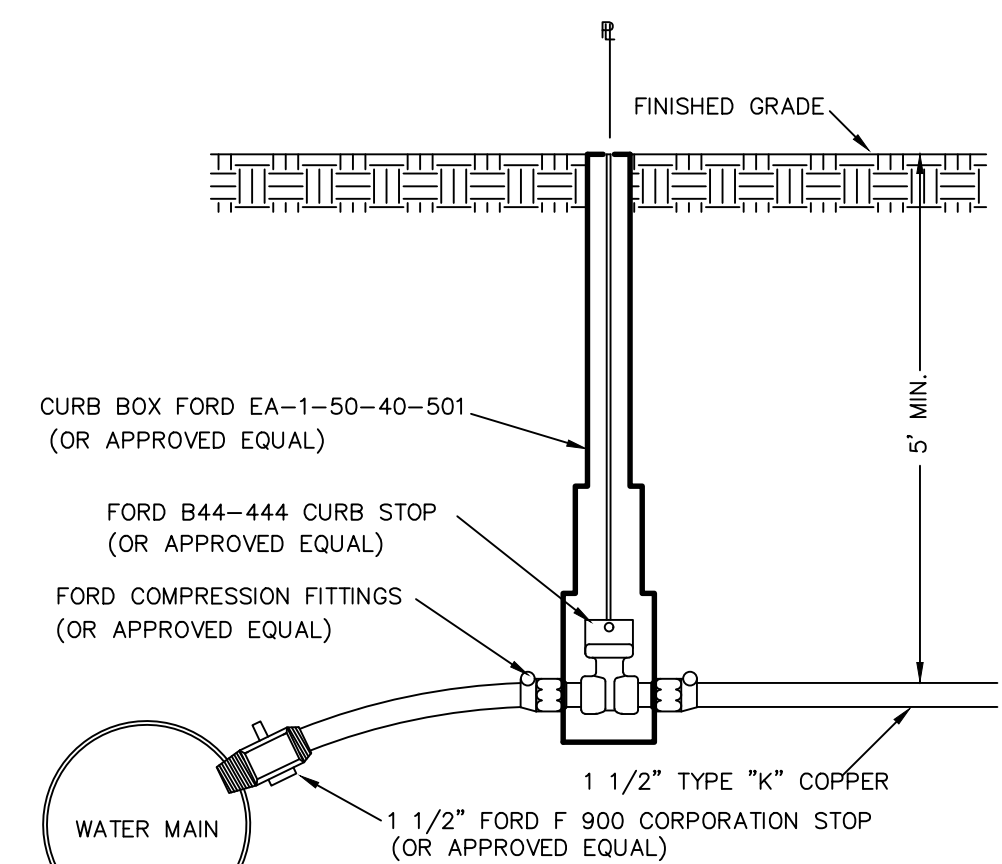
PLAN SECTION WYE CONNECTION DETAIL
NOT TO SCALE



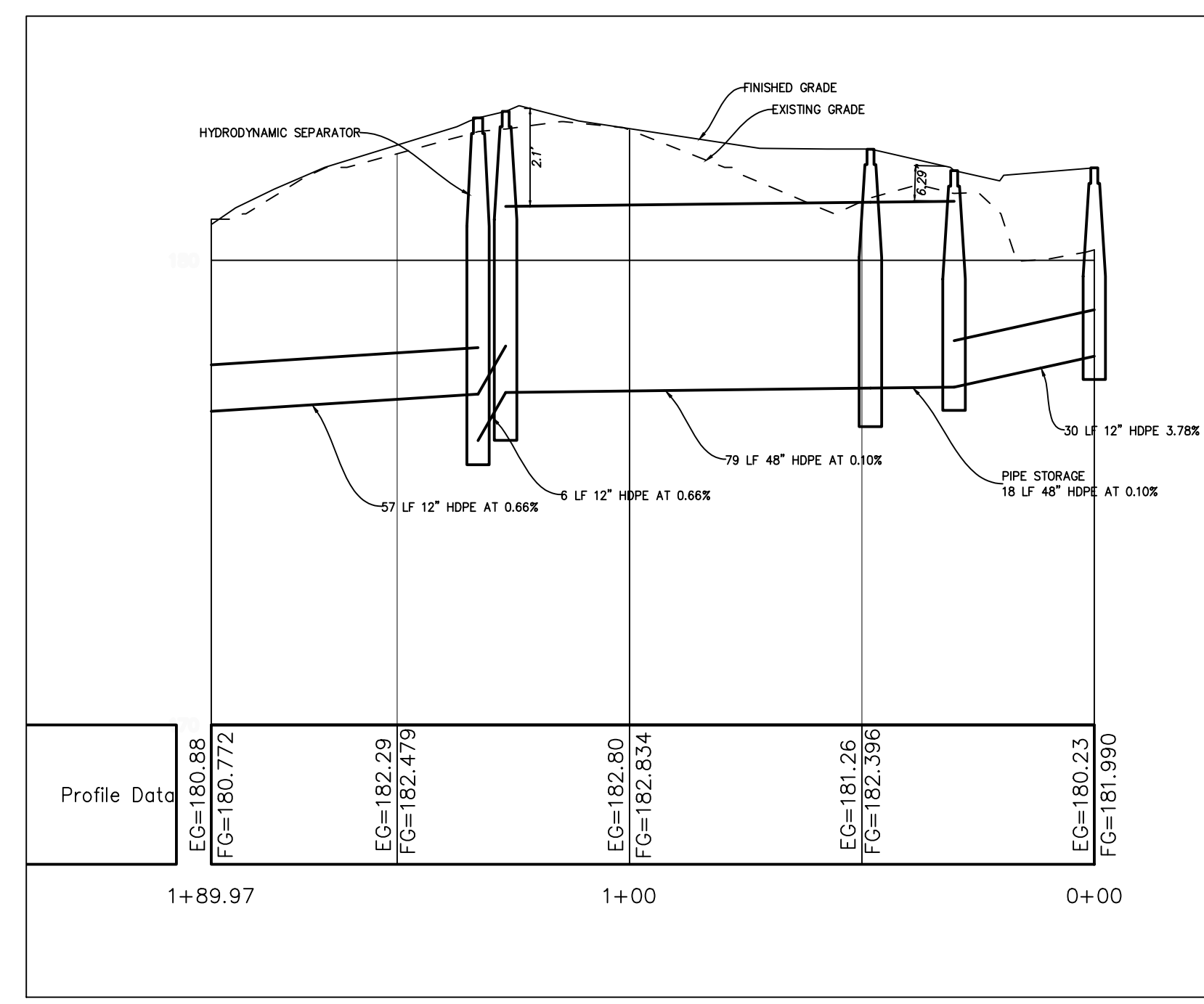
TYPICAL STORM SEWER TRENCH DETAIL
NOT TO SCALE



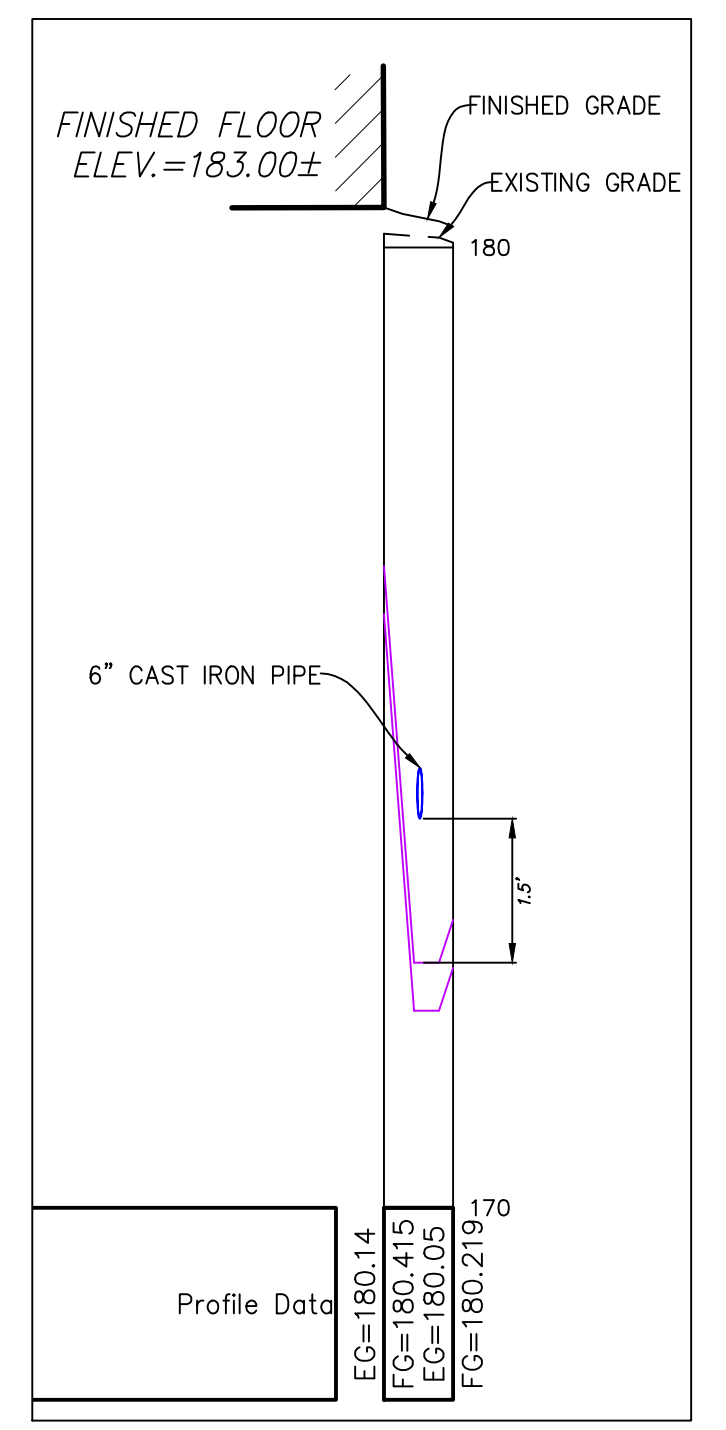
TYPICAL SANITARY SEWER TRENCH DETAIL
NOT TO SCALE



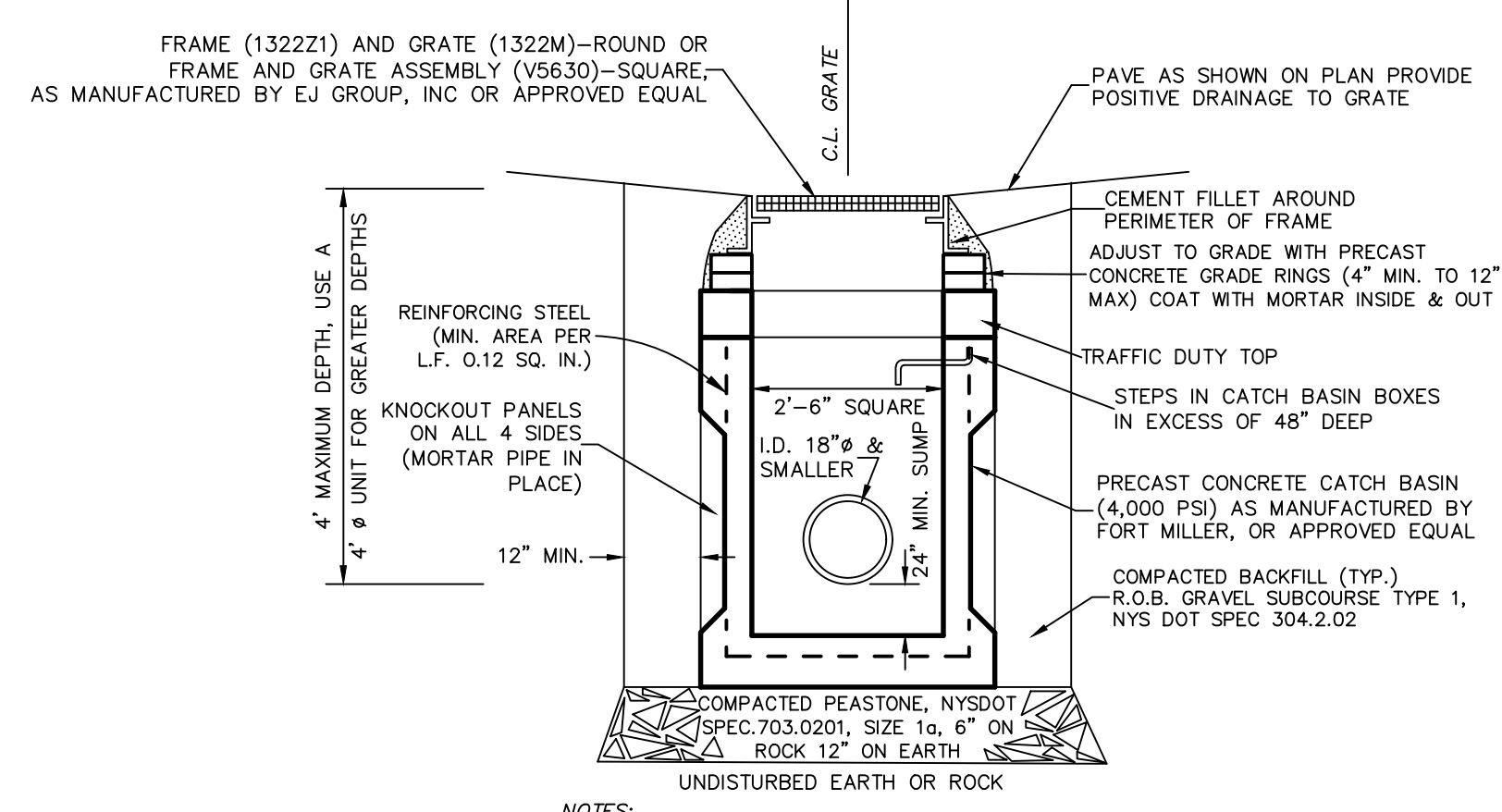
WATER SERVICE DETAIL
NOT TO SCALE



STORM SEWER STORAGE
SCALE: (V) 1"=3' SCALE: (H) 1"=30'

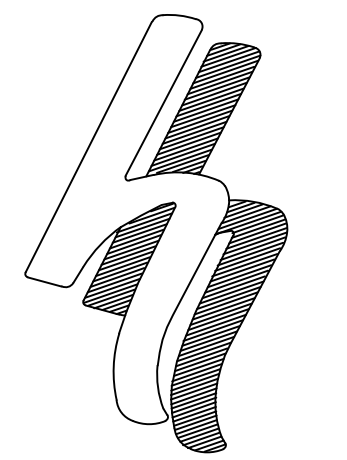


SEWER LATERAL PROFILE
SCALE: (V) 1"=2' SCALE: (H) 1"=20'



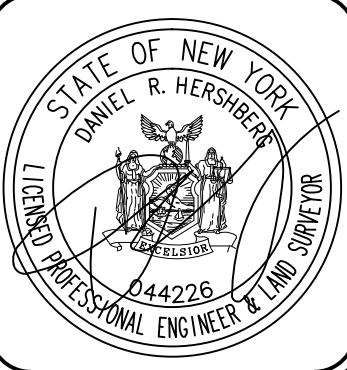
NOTES:
1. THE UPPERMOST STEP SHALL BE 4" TO 10" BELOW THE LOWERMOST GRADE RING AND NO DEEPER THAN 24" BELOW THE RIM OF THE STRUCTURE.
2. THIS STRUCTURE IS TO BE USED ONLY IF IT CAN ACCOMMODATE PIPE AND FRAME AND GRATE SIZE

CATCH BASIN DETAIL
NOT TO SCALE



HERSHBERG & HERSHBERG
Consulting Engineers and Land Surveyors
18 Locust Street
Albany, New York 12203

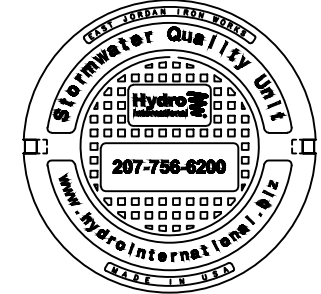
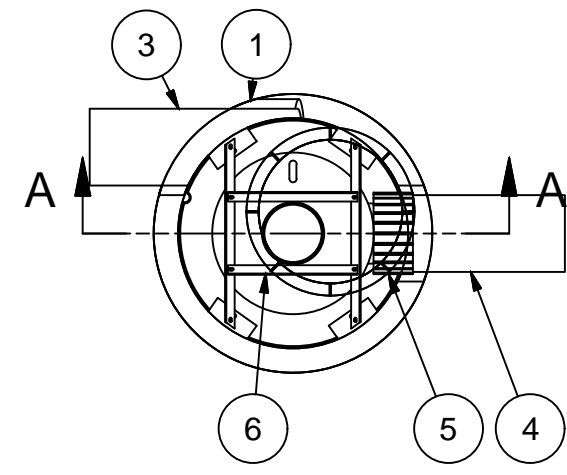
ALTERATION OF THIS DOCUMENT EXCEPT BY A LICENSED PROFESSIONAL ENGINEER OR LAND SURVEYOR, IS ILLEGAL



DATE	REVISIONS

UTILITY DETAILS
22 HOLLAND AVENUE
CITY OF ALBANY, STATE OF NEW YORK

SCALE: AS NOTED
BY: MJP
CHK: DRH
DATE: 9/14/20
200233-6.DWG



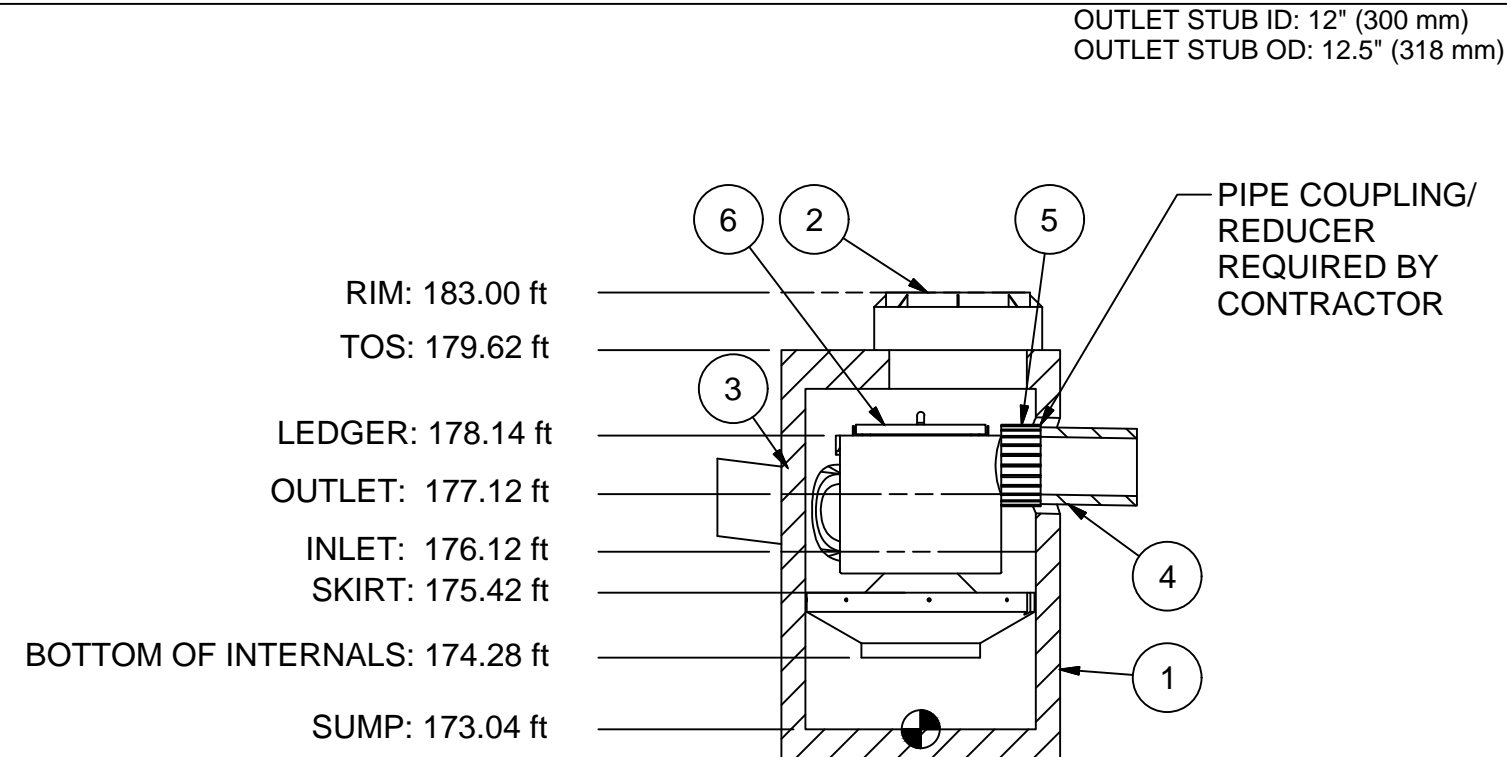
HYDRO FRAME AND COVER (INCLUDED)
GRADE RINGS BY OTHERS AS REQUIRED

EQUIPMENT PERFORMANCE

The stormwater treatment unit shall adhere to the hydraulic parameters given in the chart below and provide the removal efficiencies and storage capacities as follows:

1. The treatment system shall use an induced vortex to separate pollutants from stormwater runoff.
2. Peak Hydraulic Capacity: 3.0 cfs (85 l/s)
3. Sediment Storage Capacity: 0.70 cu. yd. (0.53 cu. m)
4. Continuous Oil Storage Capacity: 70 gal. (265 liters)
5. Sediment shall be stored in a zone that is isolated from the main flow path and protected from reentrainment by a benching skirt.
6. For more product information including regulatory acceptances, please visit <https://hydro-int.com/en/products/downstream-defender>

ANY WARRANTY GIVEN BY HYDRO INTERNATIONAL WILL APPLY ONLY TO THOSE ITEMS SUPPLIED BY IT. ACCORDINGLY HYDRO INTERNATIONAL CANNOT ACCEPT ANY RESPONSIBILITY FOR ANY STRUCTURE, PLANT, OR EQUIPMENT, (OR THE PERFORMANCE THERE OF) DESIGNED, BUILT, MANUFACTURED, OR SUPPLIED BY ANY THIRD PARTY. HYDRO INTERNATIONAL HAS A POLICY OF CONTINUOUS DEVELOPMENT AND RESERVE THE RIGHT TO AMEND THE SPECIFICATION. HYDRO INTERNATIONAL CANNOT ACCEPT LIABILITY FOR PERFORMANCE OF ITS EQUIPMENT, (OR ANY PART THEREOF), IF THE EQUIPMENT IS SUBJECT TO CONDITIONS OUTSIDE ANY DESIGN SPECIFICATION. HYDRO INTERNATIONAL OWNS THE COPYRIGHT OF THIS DRAWING, WHICH IS SUPPLIED IN CONFIDENCE. IT MUST NOT BE USED FOR ANY PURPOSE OTHER THAN THAT FOR WHICH IT IS SUPPLIED AND MUST NOT BE REPRODUCED, IN WHOLE OR IN PART, WITHOUT PRIOR PERMISSION IN WRITING FROM HYDRO INTERNATIONAL.



STONE BASE PER PROJECT SPECIFICATIONS
SECTION A-A

NOTE: NOT FOR CONSTRUCTION. CONTACT HYDRO FOR SITE SPECIFIC DETAIL

PARTS LIST				
ITEM	QTY	SIZE (in)	SIZE (mm)	DESCRIPTION
1	1	48	1200	PRECAST MANHOLE (BY HYDRO VIA PRECASTER)
2	1	30	750	FRAME AND COVER
3	1	12 (MAX)	300 (MAX)	INLET PIPE (BY OTHERS)
4	1	12 (MAX)	300 (MAX)	OUTLET PIPE (BY OTHERS)
5	1			PIPE COUPLING (BY OTHERS)
6	1			INTERNAL COMPONENTS (PRE-INSTALLED)

OUTLET STUB ID: 12" (300 mm)
OUTLET STUB OD: 12.5" (318 mm)

IF IN DOUBT ASK

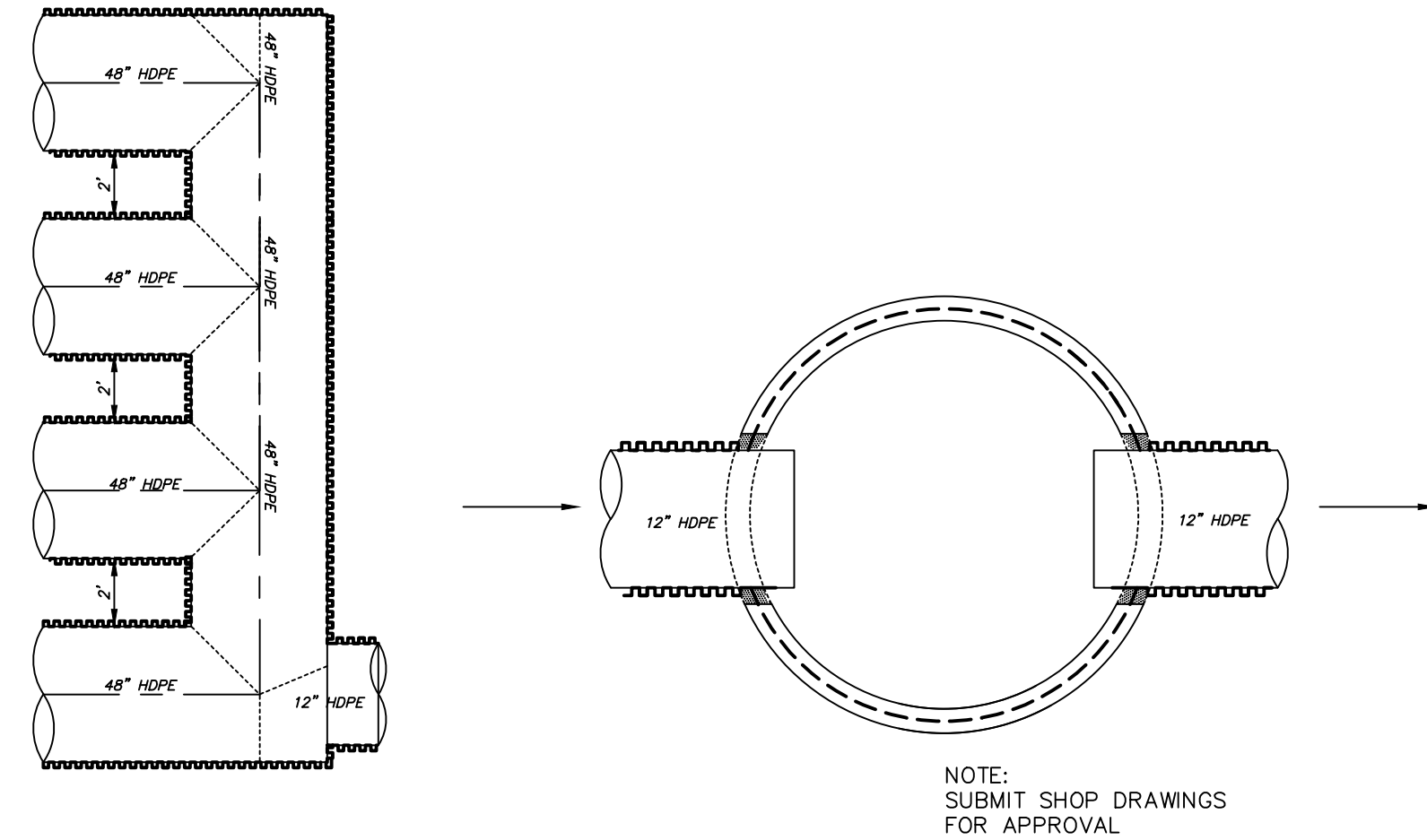
COMMENTS:
1. MANHOLE WALL AND SLAB THICKNESSES ARE NOT TO SCALE.
2. CONTACT HYDRO INTERNATIONAL FOR A BOTTOM OF STRUCTURE ELEVATION PRIOR TO SETTING DOWNSTREAM DEFENDER MANHOLE.

DATE: 11/8/2019 SCALE: NTS
DRAWN BY: GW CHECKED BY: APPROVED BY:
Title: 4ft-DIAMETER DOWNSTREAM DEFENDER



DO NOT SCALE DRAWING UNLESS OTHERWISE SPECIFIED. DIMENSIONS ARE IN INCHES.
LINEAR: 000-0126 = ±0.04in 001-1200 = ±1" 012-0246 = ±0.06in 024-0486 = ±0.08in 048-1206 = ±0.15in 1206 >>> = ±0.20in
ANGULAR: 001-1200 = ±1° 101-2400 = ±0.5° 2400 >>> = ±0.25°

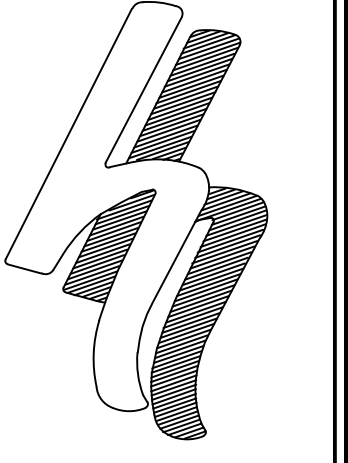
WEIGHT: N/A MATERIAL:
REFERENCE NUMBER:
DRAWING NO.: 4 GA-DWG
SHEET SIZE: B SHEET: 1 OF 1



PLAN HYDRODYNAMIC SEPARATOR PIPING DETAIL
NOT TO SCALE

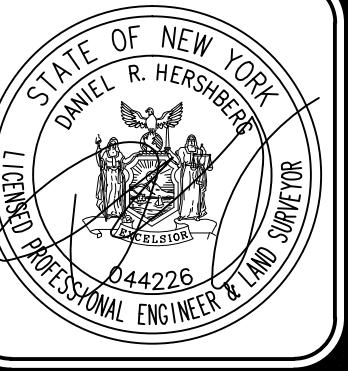
NOTE: SUBMIT SHOP DRAWINGS FOR APPROVAL

DOWN STREAM DEFENDER (4' I.D.) DETAIL
NOT TO SCALE



HERSHBERG & HERSHBERG
Consulting Engineers and Land Surveyors
18 Locust Street
Albany, New York 12203

ALTERATION OF THIS DOCUMENT EXCEPT BY A LICENSED PROFESSIONAL ENGINEER OR LAND SURVEYOR, IS ILLEGAL



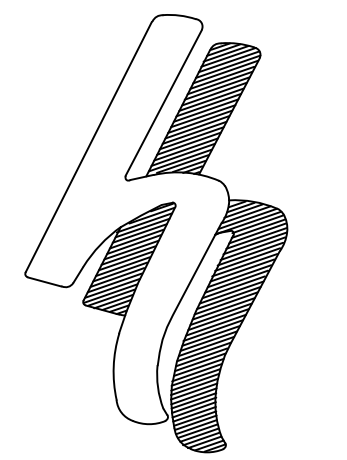
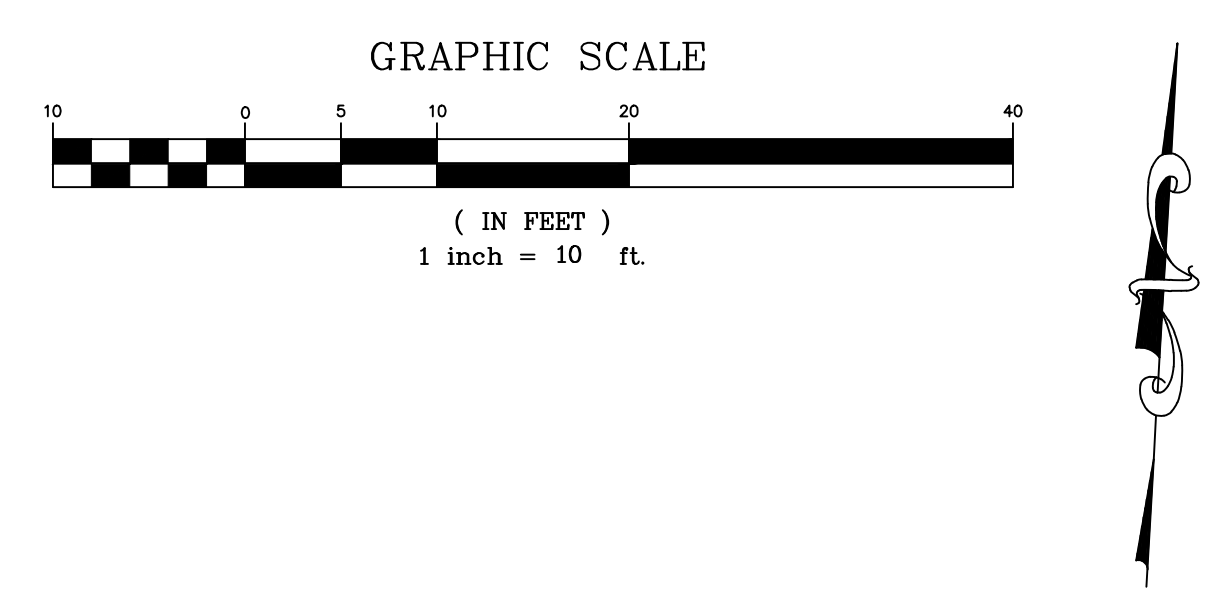
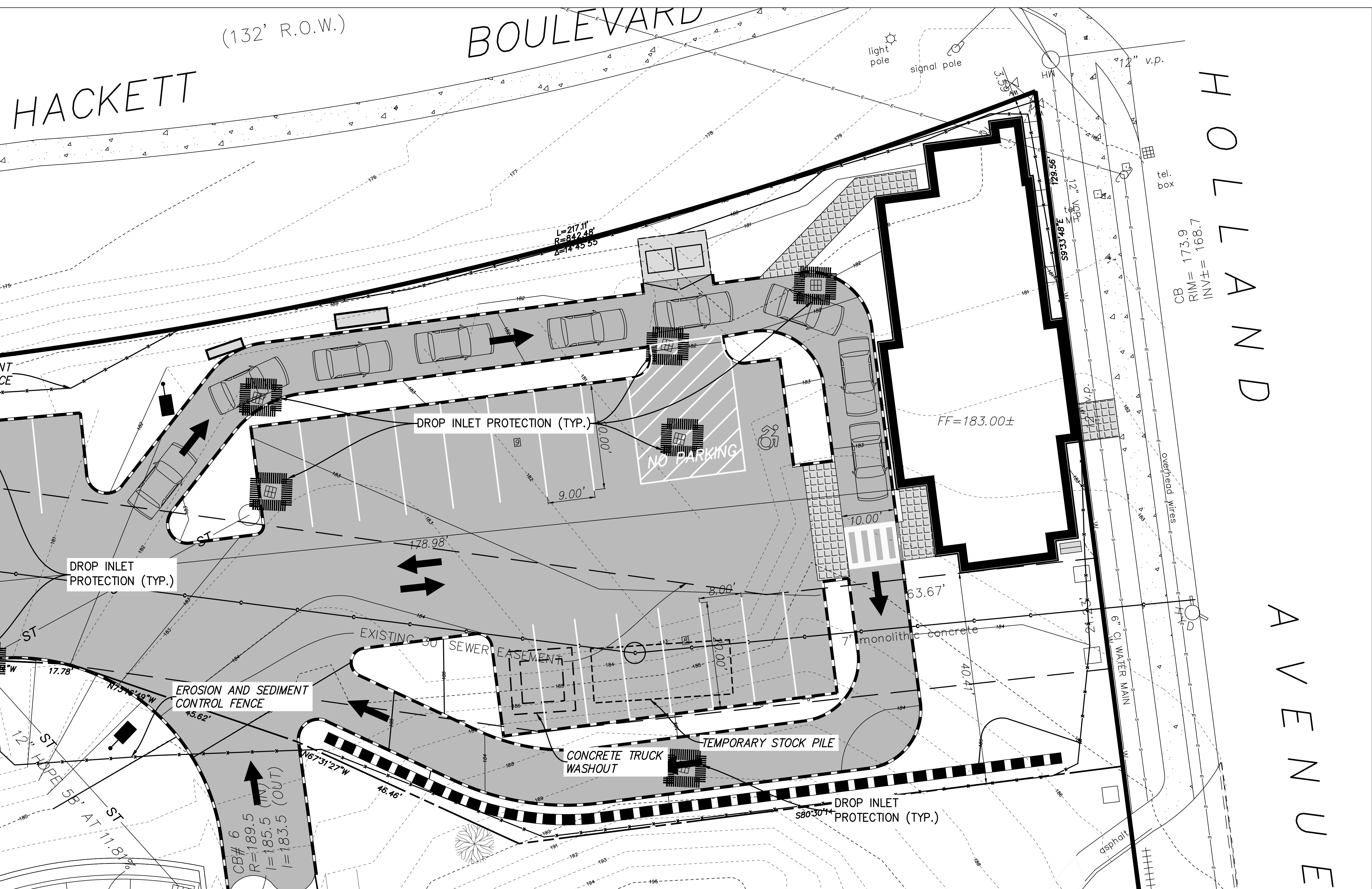
DATE	REVISIONS

UTILITY DETAILS
22 HOLLAND AVENUE
CITY OF ALBANY, STATE OF NEW YORK

FILE: 200233
SCALE: AS NOTED
BY: MAB
CHK: DRH
DATE: 9/14/20
200233-6.DWG

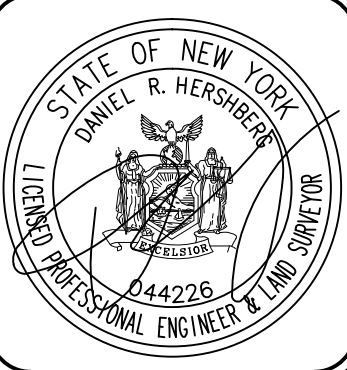
LEGEND

- | | | | |
|--------|----------------------|-----|--|
| R.O.W. | RIGHT OF WAY | MHO | MANHOLE |
| No. | NUMBER | CB | CATCHBASIN |
| P.O.B. | POINT OF BEGINNING | — | SIGN |
| S.F. | SQUARE FEET | — | FENCE LINE |
| N/F | NOW OR FORMERLY | — | OVERHEAD WIRE, UTILITY POLE & GUY WIRE |
| N | NORTH | — | TRAFFIC FLOW ACCESS AREA |
| S | SOUTH | — | WATER SHUT OFF |
| E | EAST | — | WATER VALVE |
| W | WEST | — | HYDRANT |
| L | LIBER | — | GAS VALVE |
| P. | PAGE | — | STREET LIGHT |
| ST | STORM LINE | — | CONCRETE |
| S | SEWER LINE | — | NEW PAVEMENT |
| W | WATER LINE | — | |
| G | GAS LINE | — | |
| UE | UNDERGROUND ELECTRIC | — | |
| — | PROPOSED CONTOURS | — | |



HERSHBERG & HERSHBERG
 Consulting Engineers and Land Surveyors
 18 Locust Street
 Albany, New York 12203

ALTERATION OF THIS DOCUMENT EXCEPT BY A LICENSED PROFESSIONAL ENGINEER OR LAND SURVEYOR, IS ILLEGAL

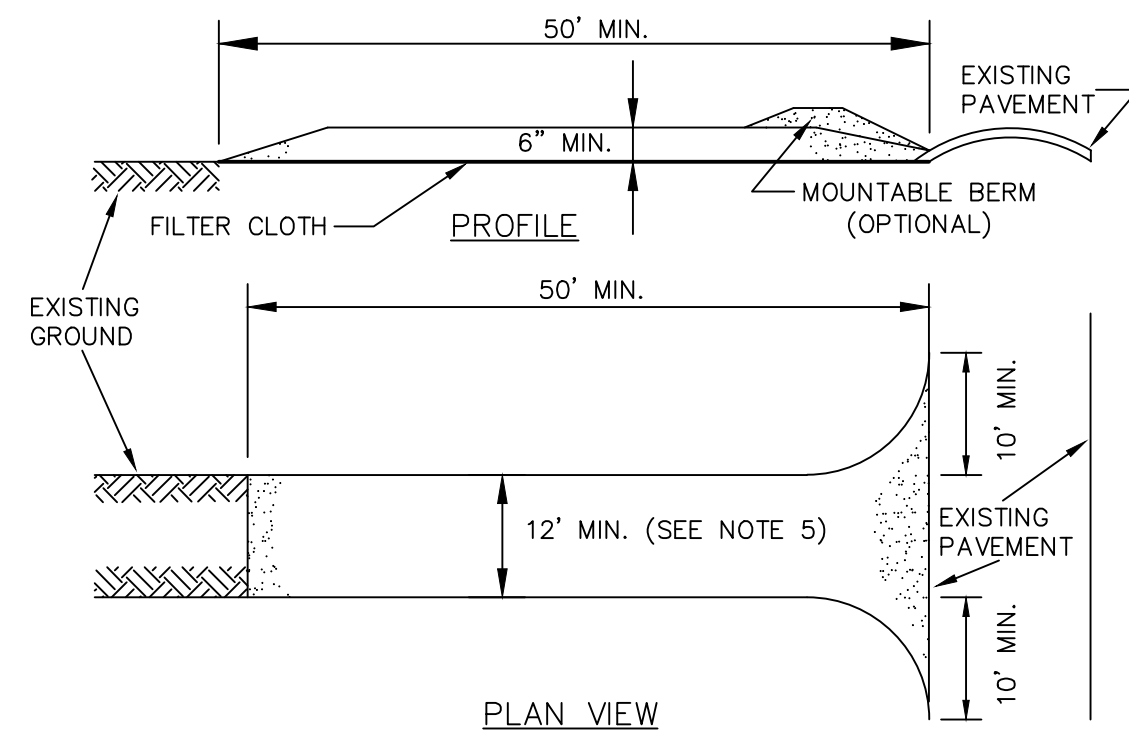


DATE	REVISIONS

EROSION AND SEDIMENT CONTROL PLAN
 22 HOLLAND AVENUE
 CITY OF ALBANY, STATE OF NEW YORK

SCALE: AS NOTED
 DATE: 9/14/20
 CHK: DRH
 BY: MJB
 FILE: 200233

FOR MUNICIPAL APPROVAL ONLY-NOT INTENDED FOR CONSTRUCTION

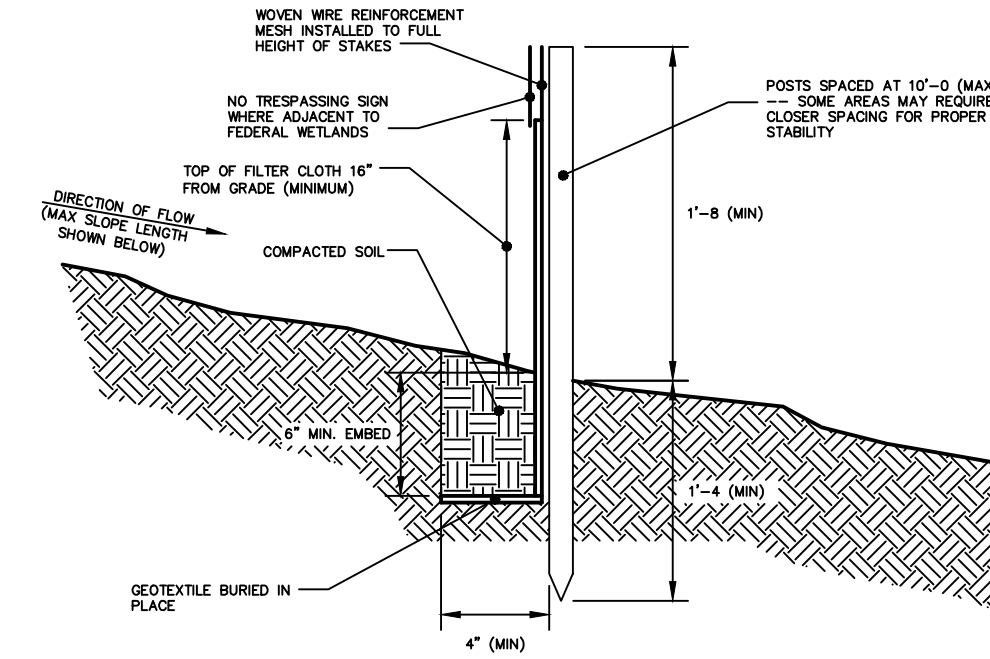


CONSTRUCTION SPECIFICATIONS:

- INSTALL CONSTRUCTION ACCESS IN ACCORDANCE WITH "NEW YORK STANDARDS AND SPECIFICATIONS FOR EROSION AND SEDIMENT CONTROL", SECTION 7A.
- STONE SIZE -USE 2" STONE, OR RECLAIMED OR RECYCLED CONCRETE EQUIVALENT.
- LENGTH - NOT LESS THAN 50 FEET (EXCEPT ON A SINGLE RESIDENCE LOT WHERE A 30 FOOT MINIMUM LENGTH WOULD APPLY).
- THICKNESS- NOT LESS THAN (6) INCHES.
- WIDTH - TWELVE (12) FOOT MINIMUM, BUT NOT LESS THAN THE FULL WIDTH AT POINTS WHERE INGRESS OR EGRESS OCCURS. IF CONSTRUCTED AS THE ONLY ENTRANCE TO THE SITE, WIDTH SHALL BE TWENTY-FOUR (24) FEET.
- STABILIZATION FABRIC - WILL BE PLACED OVER THE ENTIRE AREA PRIOR TO PLACING OF STONE.
- SURFACE WATER - ALL SURFACE WATER FLOWING OR DIVERTED TOWARD CONSTRUCTION ENTRANCES SHALL BE PIPED ACROSS THE ENTRANCE. IF PIPING IS IMPRACTICAL, A MOUNTABLE BERM WITH 5:1 SLOPES WILL BE PERMITTED.
- MAINTENANCE - THE ACCESS SHALL BE MAINTAINED IN A CONDITION WHICH WILL PREVENT TRACKING DR FLOWING OF SEDIMENT ONTO PUBLIC RIGHTS-OF-WAY. ALL SEDIMENT SPILLED, DROPPED, WASHED OR TRACKED ONTO PUBLIC RIGHTS-OF-WAY MUST BE REMOVED IMMEDIATELY.
- WHEN WASHING IS REQUIRED, IT SHALL BE DONE ON AN AREA STABILIZED WITH STONE AND WHICH DRAINS ONTO AN APPROVED SEDIMENT TRAPPING DEVICE.
- PERIODIC INSPECTION AND NEEDED MAINTENANCE SHALL BE PROVIDED AFTER EACH RAIN.

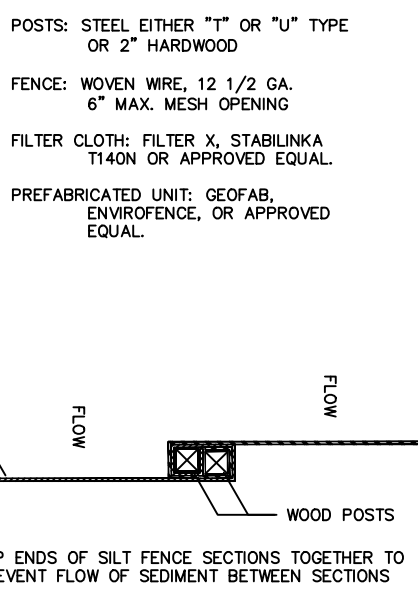
STABILIZED CONSTRUCTION ACCESS DETAIL

NOT TO SCALE



CONSTRUCTION SPECIFICATIONS FOR FABRICATED SILT FENCE

- INSTALL SILT FENCE IN ACCORDANCE WITH THE JULY 2016 "NEW YORK STANDARDS AND SPECIFICATIONS FOR EROSION AND SEDIMENT CONTROL".
- WOVEN WIRE FENCE TO BE FASTENED SECURELY TO FENCE POSTS WITH WIRE TIES OR STAPLES. POSTS SHALL BE STEEL EITHER "1" OR "1/2" TYPE OR HARDWOOD.
- FILTER CLOTH TO BE TO BE FASTENED SECURELY TO WOVEN WIRE FENCE WITH TIES SPACED EVERY 24" AT TOP AND MID SECTION. FENCE SHALL BE WOVEN WIRE, 6" MAX. MESH OPENING.
- WHEN TWO SECTIONS OF FILTER CLOTH ADJOIN EACH OTHER THEY SHALL BE OVERLAPPED BY 6" INCHES AND FOLDED. FILTER CLOTH SHALL BE EITHER FILTER X, MIRARI 100X, STABILINKA T140N, OR APPROVED EQUIVALENT.
- PREFABRICATED UNITS SHALL MEET THE MINIMUM REQUIREMENTS SHOWN.
- MAINTENANCE SHALL BE PERFORMED AS NEEDED AND MATERIAL REMOVED WHEN "BULGES" DEVELOP IN THE SILT FENCE.



SILT FENCE JOINT DETAIL

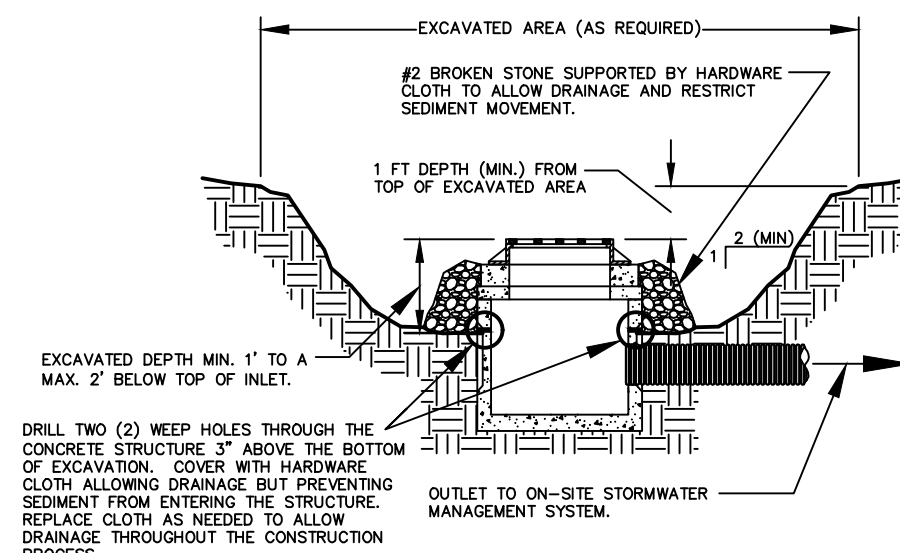
DESIGN CRITERIA:

- DESIGN COMPUTATIONS ARE NOT REQUIRED FOR INSTALLATIONS OF 1 MONTH OR LESS. LONGER INSTALLATION PERIODS SHOULD BE DESIGNED FOR EXPECTED RUNOFF.
- ALL SILT FENCES SHALL BE PLACED AS CLOSE TO THE AREA AS POSSIBLE, BUT AT LEAST 10 FEET FROM THE TOE OF A SLOPE. STREETS SHALL BE 36" V. TO ALLOW FOR MAINTENANCE AND ROLL DOWN. THE AREA BEYOND THE FENCE MUST BE UNDISTURBED OR STABILIZED.
- THE TYPE OF SILT FENCE SPECIFIED FOR EACH LOCATION ON THE PLAN SHALL NOT EXCEED THE MAXIMUM SLOPE LENGTH AND MAXIMUM FENCE LENGTH REQUIREMENTS SHOWN IN THE FOLLOWING TABLE:

Slope	Steepness	Standrd (SF)	Slope Length/Fence Length (ft)	Reinforced (RSF)	Super (SSF)
<2%	<5:1	300/1500	N/A	N/A	N/A
2-10%	5:1 to 10:1	125/2000	250/2000	300/2500	300/2500
10-20%	10:1 to 5:1	100/750	150/1000	200/1000	200/1000
20-33%	5:1 to 3:1	60/500	60/750	100/1000	100/1000
33-50%	3:1 to 2:1	40/250	70/350	100/500	100/500
>50%	>2:1	20/125	30/175	50/250	50/250

STANDARD SILT FENCE (SF) IS FABRIC ROLLS STAPLED TO WOODEN STAKES DRIVEN 16 INCHES IN THE GROUND.
 REINFORCED SILT FENCE (RSF) IS FABRIC PLACED AGAINST WELDED WIRE FABRIC WITH ANCHORED STEEL POSTS DRIVEN 16 INCHES IN THE GROUND.
 SUPER SILT FENCE (SSF) IS FABRIC PLACED AGAINST CHAIN LINK FENCE AS SUPPORT BACKING WITH POSTS DRIVEN 3 FEET IN THE GROUND.

SILT FENCE SHALL BE REMOVED AS SOON AS THE DISTURBED AREA HAS ACHIEVED FINAL STABILIZATION.
 THE SILT FENCE SHALL BE INSTALLED IN ACCORDANCE WITH THE APPROPRIATE DETAILS, WHERE ENDS OF FILTER CLOTH COME TOGETHER, THEY SHALL BE OVERLAPPED, FOLDED AND STAPLED TO PREVENT SEDIMENT BYPASS, BUT JOINTS ARE NOT ACCEPTABLE.



CONSTRUCTION SPECIFICATIONS:

- INSTALL INLET PROTECTION IN ACCORDANCE WITH THE JULY 2016 "NEW YORK STANDARDS AND SPECIFICATIONS FOR EROSION AND SEDIMENT CONTROL".
- CLEAR THE AREA OF ALL DEBRIS THAT WILL HINDER EXCAVATION.
- GRADE APPROACH TO THE INLET UNIFORMLY AROUND THE BASIN.
- WEEP HOLES SHALL BE PROTECTED BY 2" STONE OR GRAVEL.
- UPON STABILIZATION OF CONTRIBUTING DRAINAGE AREA, SEAL WEEP HOLES, FILL EXCAVATION WITH STABLE SOIL TO FINAL GRADE, COMPACT IT PROPERLY AND STABILIZE WITH PERMANENT SEEDING.
- THE MAXIMUM DRAINAGE AREA SHALL BE 1 ACRE.

DESIGN CRITERIA:

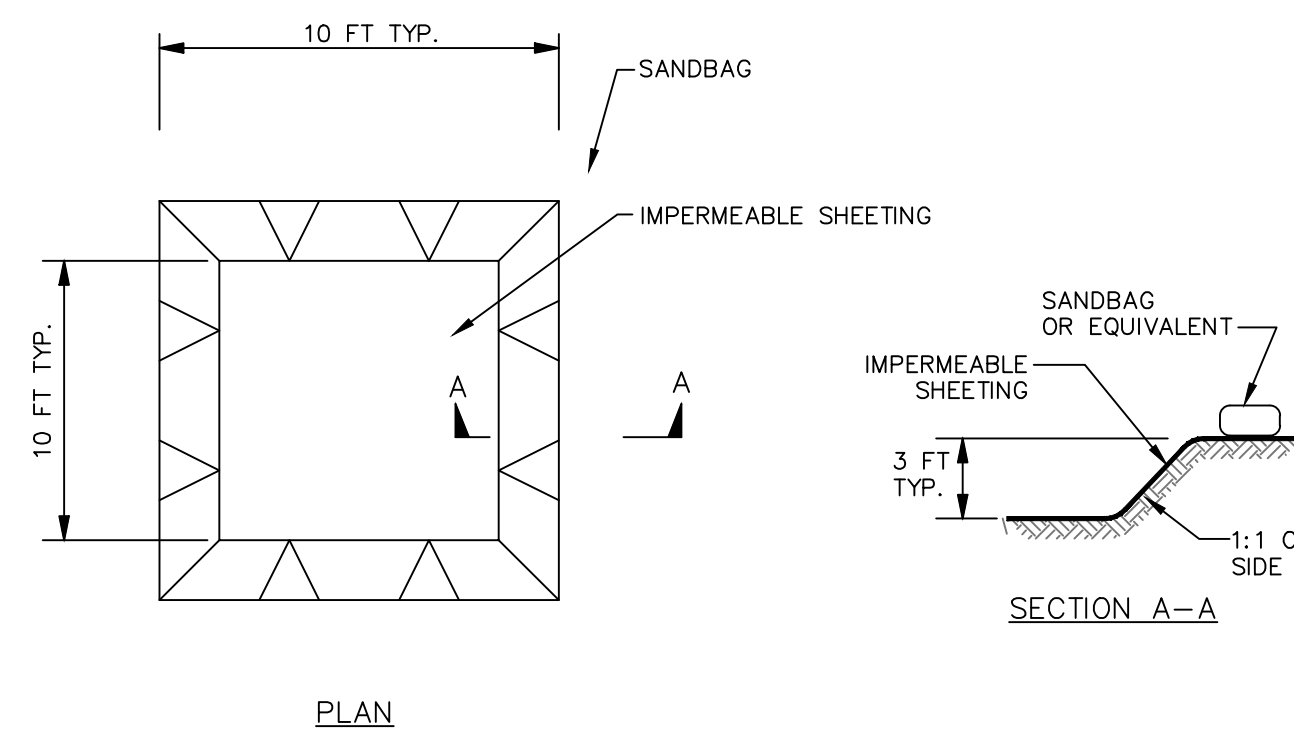
LIMIT THE DRAINAGE AREA TO THE INLET DEVICE TO ONE (1) ACRE. EXCAVATED SIDE SLOPES SHALL BE NO STEEPER THEN 2:1. THE MINIMUM DEPTH SHALL BE 1 FOOT AND THE MAXIMUM DEPTH 2 FEET AS MEASURED FROM THE CREST OF THE INLET STRUCTURE. SHAPE THE EXCAVATED BASIN TO FIT CONDITIONS WITH THE LONGEST DIMENSION ORIENTED TOWARD THE LONGEST INFLOW AREA TO PROVIDE MAXIMUM TRAP EFFICIENCY. THE CAPACITY OF THE EXCAVATED BASIN SHOULD BE ESTABLISHED TO CONTAIN 900 CUBIC FEET PER ACRE OF DISTURBED AREA. WEEP HOLES, PROTECTED BY FABRIC AND STONE, SHOULD BE PROVIDED FOR DRAINING THE TEMPORARY POOL.
 INSPECT AND CLEAN THE EXCAVATED BASIN AFTER EVERY STORM. SEDIMENT SHOULD BE REMOVED WHEN 50 PERCENT OF THE STORAGE VOLUME IS ACHIEVED. THIS MATERIAL SHOULD BE INCORPORATED INTO THE SITE IN A STABILIZED MANNER.

EXCAVATED DROP INLET PROTECTION

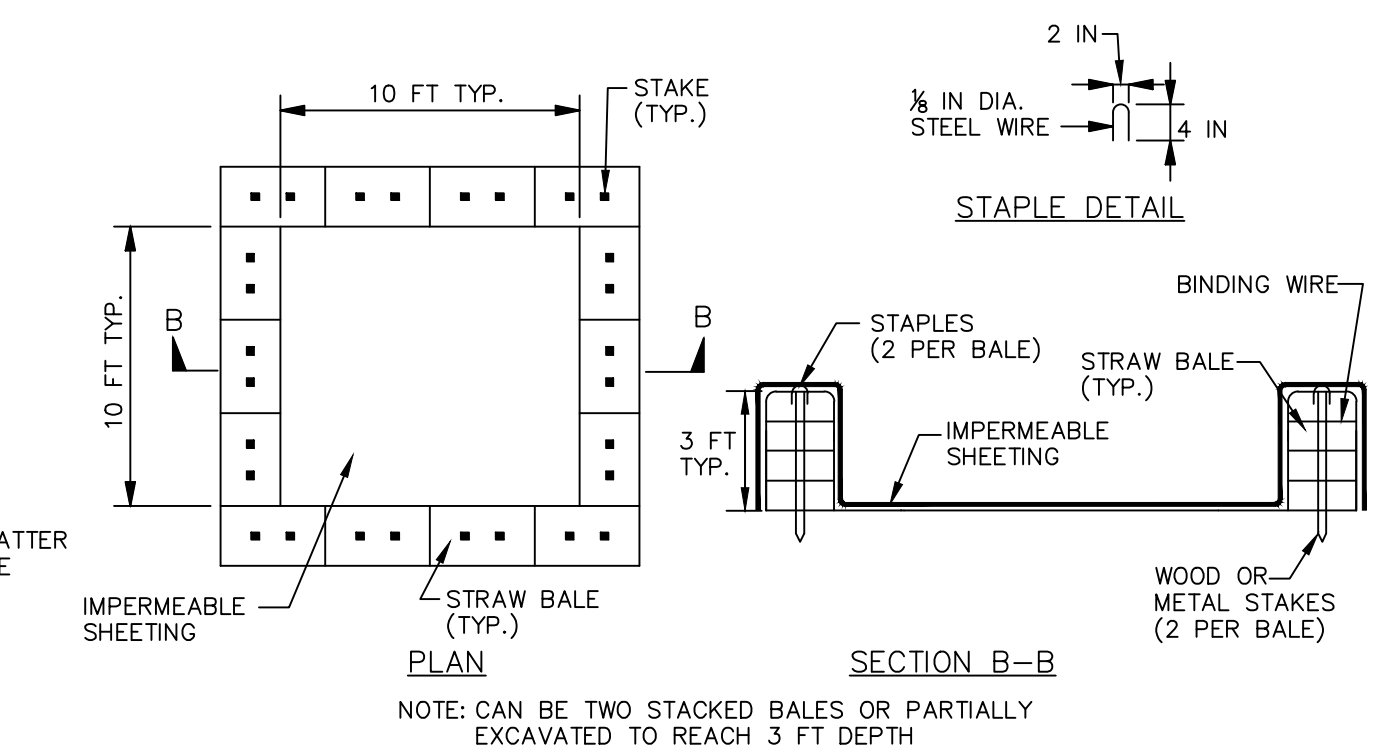
NOT TO SCALE

SEDIMENT CONTROL FENCE INSTALLATION DETAIL

NOT TO SCALE



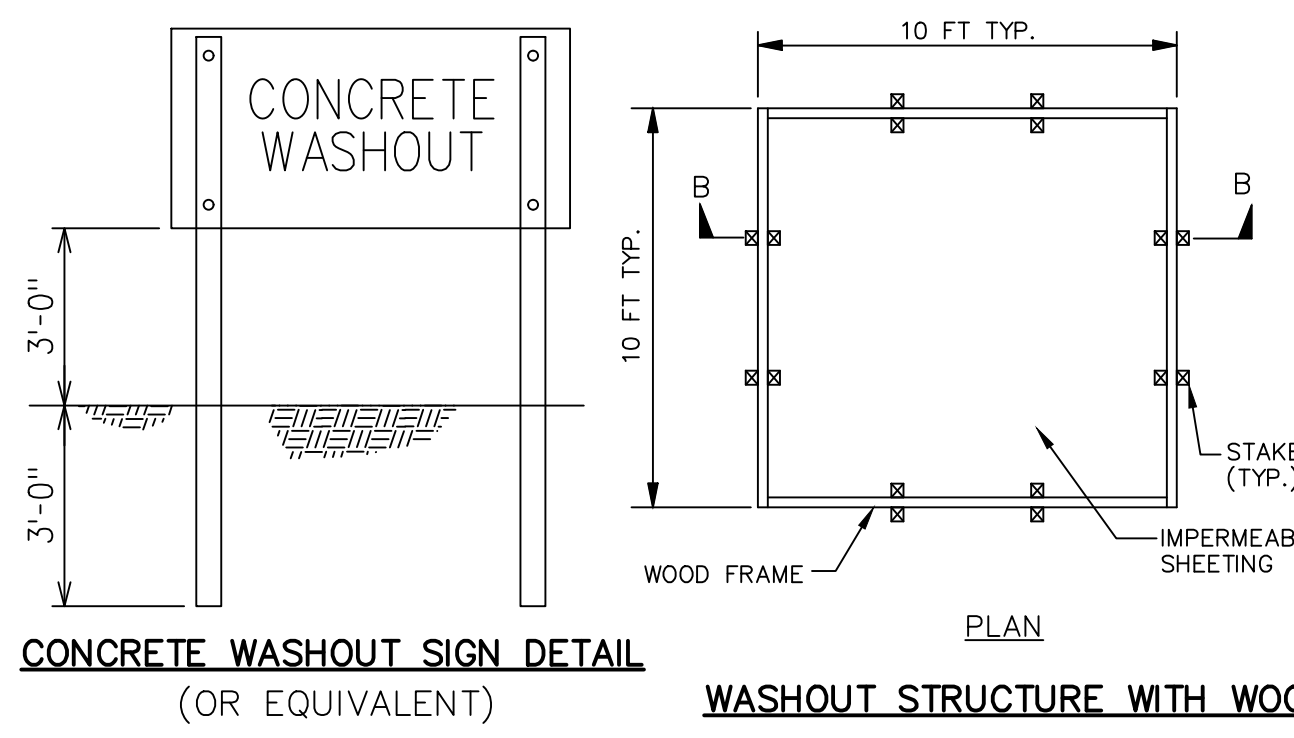
EXCAVATED WASHOUT STRUCTURE



WASHOUT STRUCTURE WITH STRAW BALES

CONSTRUCTION SPECIFICATIONS

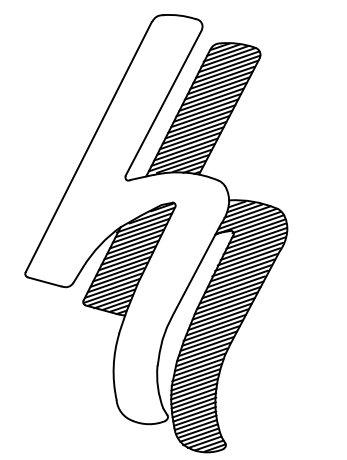
- LOCATE WASHOUT STRUCTURE A MINIMUM OF 50 FEET AWAY FROM OPEN CHANNELS, STORM DRAIN INLETS, SENSITIVE AREAS, WETLANDS, BUFFERS AND WATER COURSES AND AWAY FROM CONSTRUCTION TRAFFIC.
- SIZE WASHOUT STRUCTURE FOR VOLUME NECESSARY TO CONTAIN WASH WATER AND SOLIDS AND MAINTAIN AT LEAST 4 INCHES OF FREEBOARD. TYPICAL DIMENSIONS ARE 10 FEET X 10 FEET X 3 FEET DEEP.
- PREPARE SOIL BASE FREE OF ROCKS OR OTHER DEBRIS THAT MAY CAUSE TEARS OR HOLES IN THE LINER. FOR LINER, USE 10 MIL OR THICKER UV RESISTANT, IMPERMEABLE SHEETING, FREE OF HOLES AND TEARS OR OTHER DEFECTS THAT COMPROMISE IMPERMEABILITY OF THE MATERIAL.
- PROVIDE A SIGN FOR THE WASHOUT IN CLOSE PROXIMITY TO THE FACILITY.
- KEEP CONCRETE WASHOUT STRUCTURE WATER TIGHT. REPLACE IMPERMEABLE LINER IF DAMAGED (E.G., RIPPED OR PUNCTURED). EMPTY OR REPLACE WASHOUT STRUCTURE THAT IS 75 PERCENT FULL, AND DISPOSE OF ACCUMULATED MATERIAL PROPERLY. DO NOT REUSE PLASTIC LINER. WET-VACUUM STORED LIQUIDS THAT HAVE NOT EVAPORATED AND DISPOSE OF IN AN APPROVED MANNER. PRIOR TO FORECASTED RAINSTORMS, REMOVE LIQUIDS OR COVER STRUCTURE TO PREVENT OVERFLOWS. REMOVE HARDENED SOLIDS, WHOLE OR BROKEN UP, FOR DISPOSAL OR RECYCLING. MAINTAIN RUNOFF DIVERSION AROUND EXCAVATED WASHOUT STRUCTURE UNTIL STRUCTURE IS REMOVED.



WASHOUT STRUCTURE WITH WOOD PLANKS

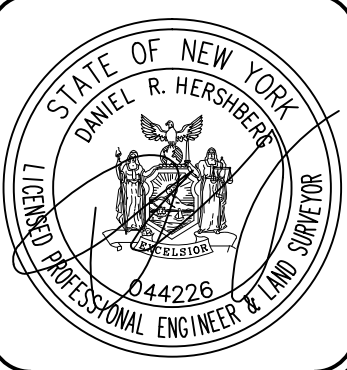
ONSITE CONCRETE TRUCK WASHOUT STRUCTURE DETAIL

NOT TO SCALE



HERSHBERG & HERSHBERG
 Consulting Engineers and Land Surveyors
 18 Locust Street
 Albany, New York 12203

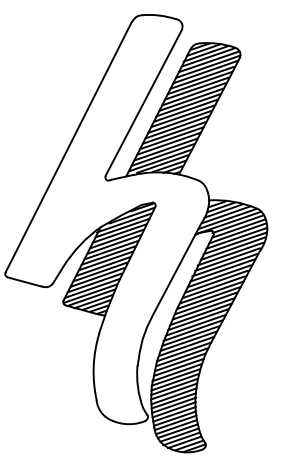
ALTERATION OF THIS DOCUMENT EXCEPT BY A LICENSED PROFESSIONAL ENGINEER OR LAND SURVEYOR, IS ILLEGAL



DATE	REVISIONS

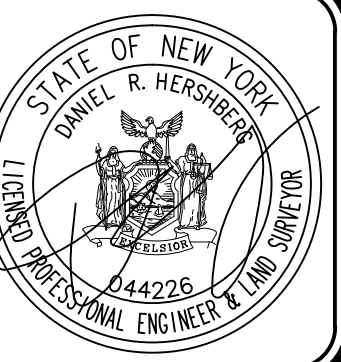
EROSION AND SEDIMENT CONTROL DETAILS
 22 HOLLAND AVENUE
 CITY OF ALBANY, STATE OF NEW YORK

SCALE: AS NOTED
 DATE: 9/14/20
 CHK: DRH
 BY: MJB
 200233-6.DWG
 FILE: 200233



HERSHBERG & HERSHBERG
 Consulting Engineers and Land Surveyors
 18 Locust Street
 Albany, New York 12203

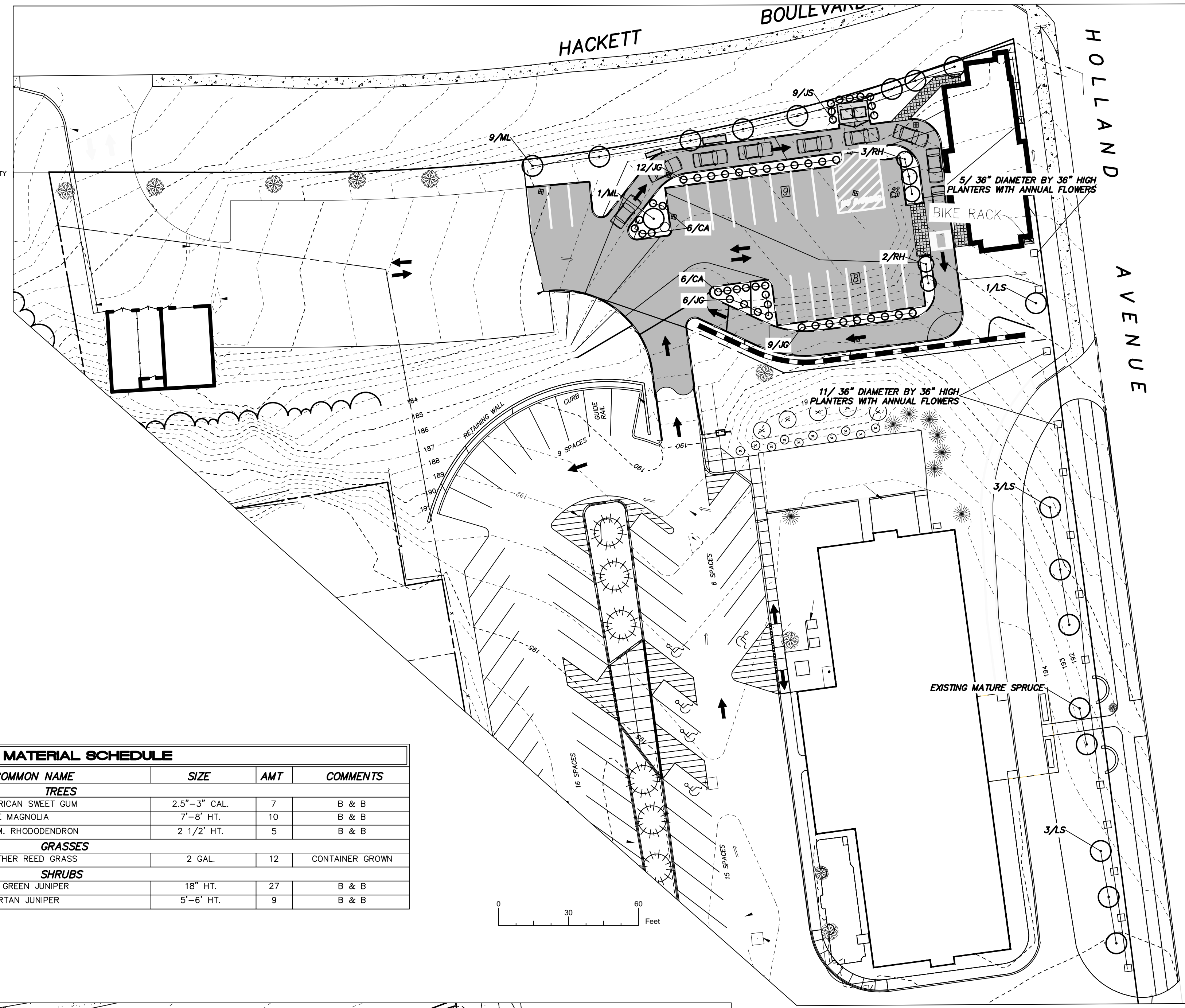
ALTERATION OF THIS DOCUMENT EXCEPT BY A LICENSED PROFESSIONAL ENGINEER OR LAND SURVEYOR, IS ILLEGAL



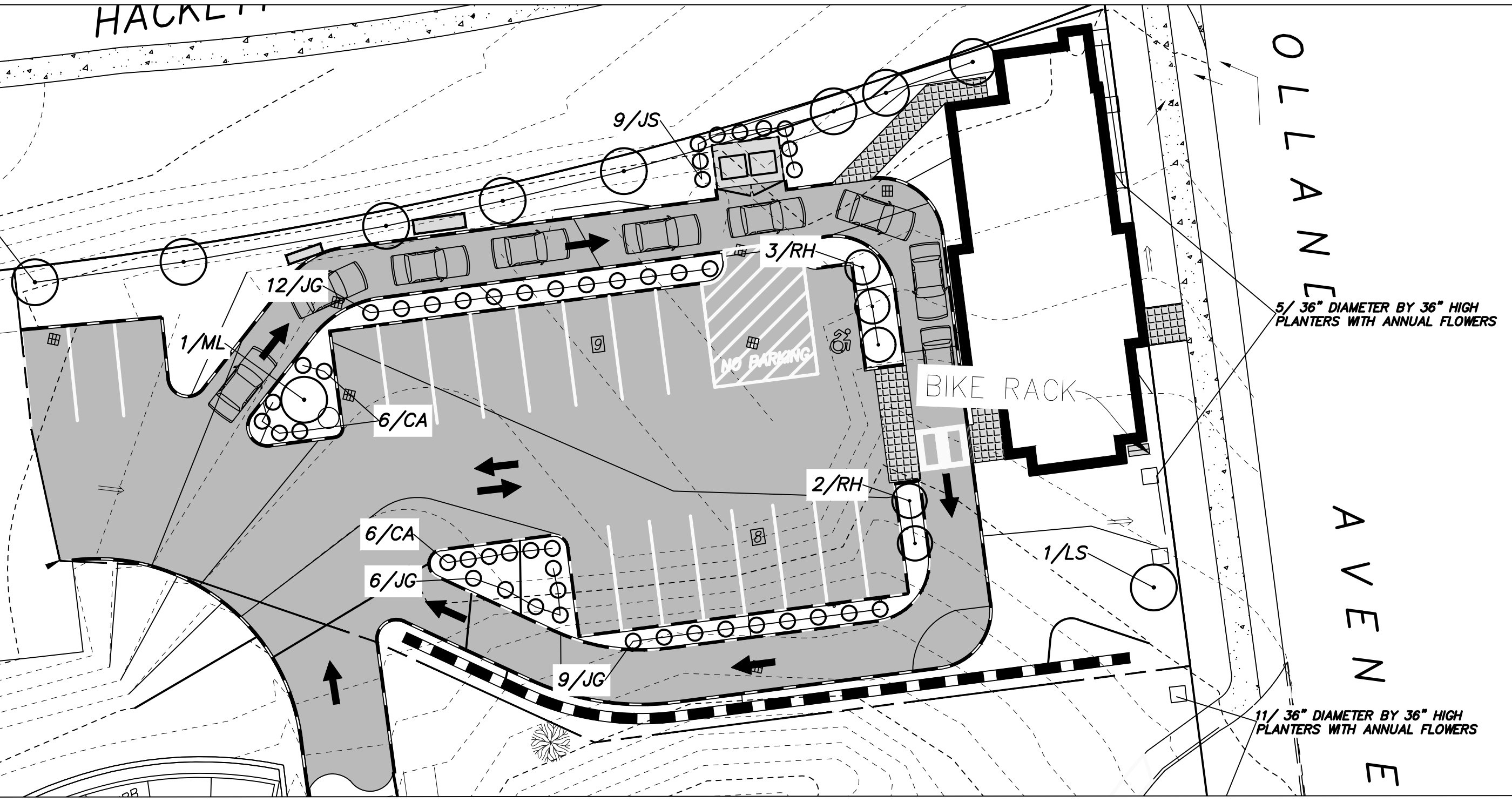
DATE	REVISIONS

LANDSCAPING PLAN FOR
 22 HOLLAND AVENUE
 ALBANY, N.Y.

LEGEND			
R.O.W.	RIGHT OF WAY	M/O	MANHOLE
No.	NUMBER	CB	CATCHBASIN
P.O.B.	POINT OF BEGINNING	SL	SIGN
S.F.	SQUARE FEET	FL	FENCE LINE
N/F	NOW OR FORMERLY	OW	OVERHEAD WIRE, UTILITY POLE & GUY WIRE
N	NORTH	TF	TRAFFIC FLOW ACCESS AREA
S	SOUTH	WS	WATER SHUT OFF
E	EAST	WV	WATER VALVE
W	WEST	HY	HYDRANT
L	LIBER	GV	GAS VALVE
P.	PAGE	SL	STREET LIGHT
ST	STORM LINE	CON	CONCRETE
SW	SEWER LINE	PAV	PAVEMENT
W	WATER LINE		
G	GAS LINE		
UE	UNDERGROUND ELECTRIC		

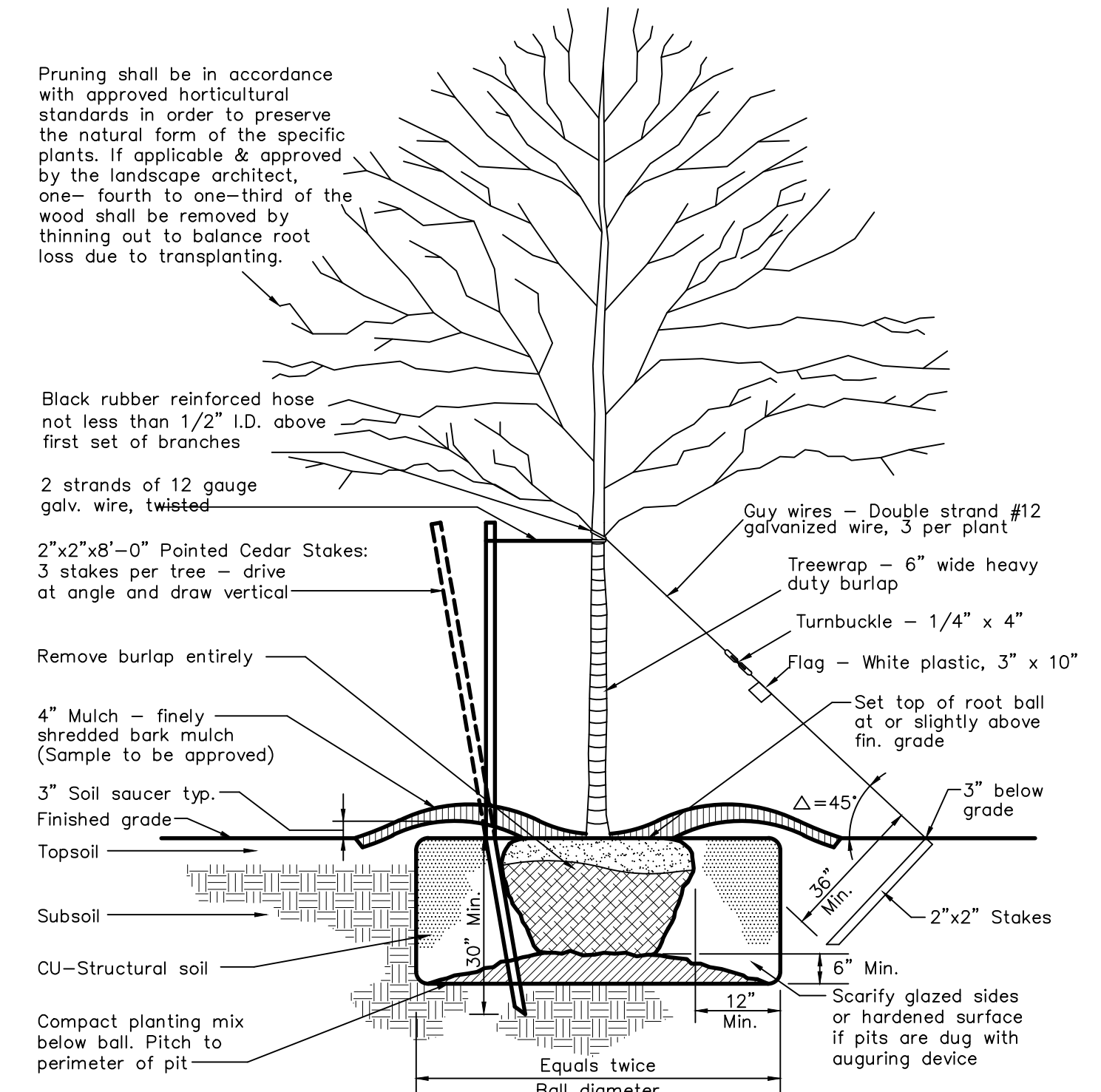


PLANT MATERIAL SCHEDULE					
SYM	BOTANICAL NAME	COMMON NAME	SIZE	AMT	COMMENTS
TREES					
LS	LIQUIDAMBAR STYRACIFLUA	AMERICAN SWEET GUM	2.5"-3" CAL.	7	B & B
ML	MAGNOLIA LILIFLORA	JANE MAGNOLIA	7"-8" HT.	10	B & B
RH	RHODODENDRON 'P.J.M.'	P.J.M. RHODODENDRON	2 1/2' HT.	5	B & B
GRASSES					
CA	CALAMAGROSTIS X ACUTIFLORA 'KARL FOERSTER'	FEATHER REED GRASS	2 GAL.	12	CONTAINER GROWN
SHRUBS					
JG	JUNIPERUS CHINENSIS 'SEA GREEN'	SEA GREEN JUNIPER	18" HT.	27	B & B
JS	JUNIPERUS CHINENSIS 'SPARTAN'	SPARTAN JUNIPER	5'-6" HT.	9	B & B

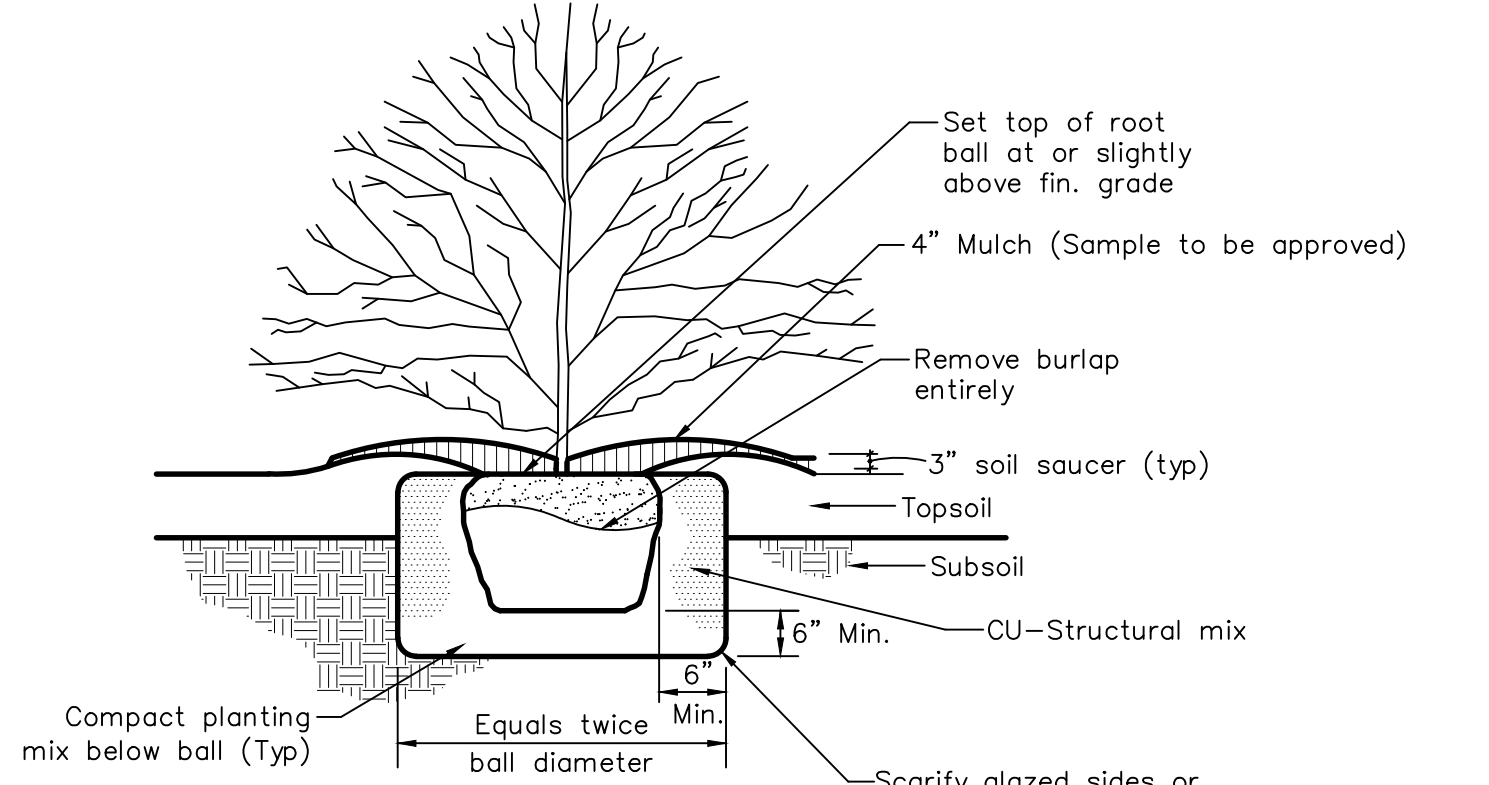


OVERALL LANDSCAPING
 SCALE: 1"=30'

STREET FURNITURE REQUIRED AT 22 HOLLAND AVENUE	
SITE FRONTAGES	L.F.
TOTAL #22	855
LEASE PARCEL	329
BALANCE OF #22	526
TOTAL PIECES OF STREET FURNITURE REQUIRED AT 1 PER 50 FEET	
DIVISION OF STREET FURNITURE	
REQUIRED FOR LEASE PARCEL	6
REQUIRED BALANCE FOR #22	11
LANDSCAPE REQUIREMENTS AT 22 HOLLAND AVENUE	
EXISTING TREES	#
TOTAL #22	10
LEASE PARCEL	1
BALANCE OF #22	9
DIVISION OF ADDITIONAL TREES	
REQUIRED TOTAL #22 - EXISTING	14
REQUIRED LEASE PARCEL - EXISTING	8
REQUIRED BALANCE OF #22	6

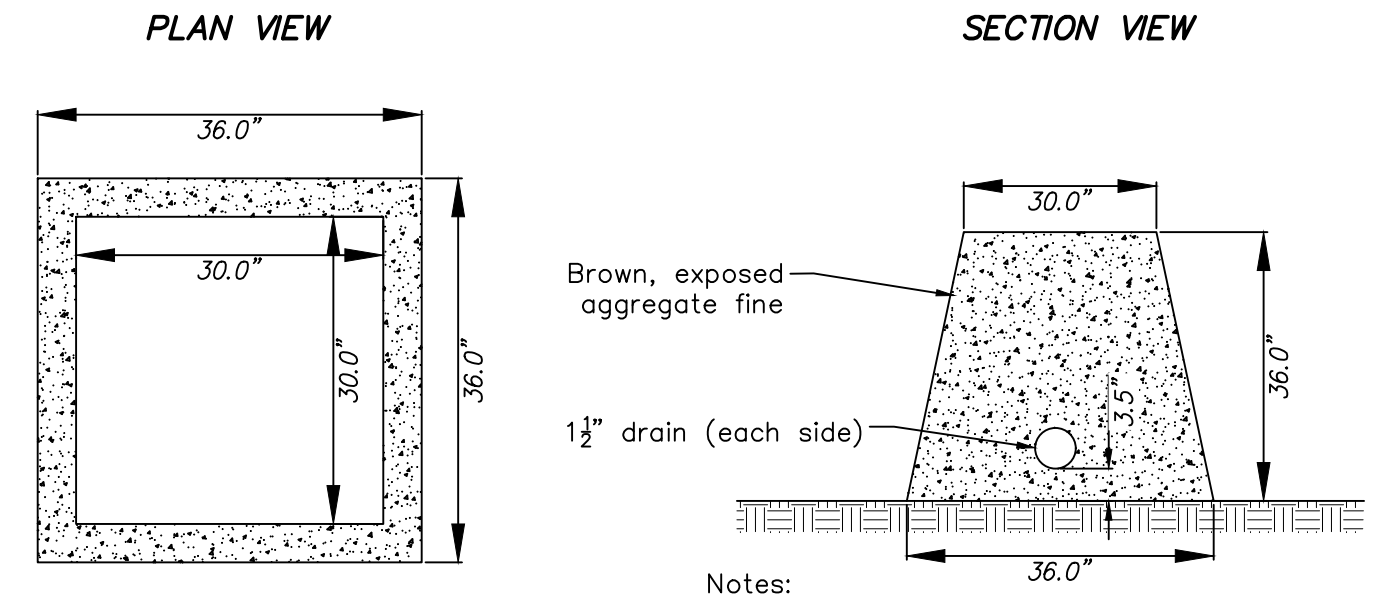


TREE PLANTING DETAIL
 NOT TO SCALE



SHRUB PLANTING DETAIL
 NOT TO SCALE

Notes:
 1. In areas of mass planting, continuously excavate and mulch entire bed.
 2. Do not add fertilizer to planting mix for fall planting.



PLANTER BOX DETAIL
 NOT TO SCALE

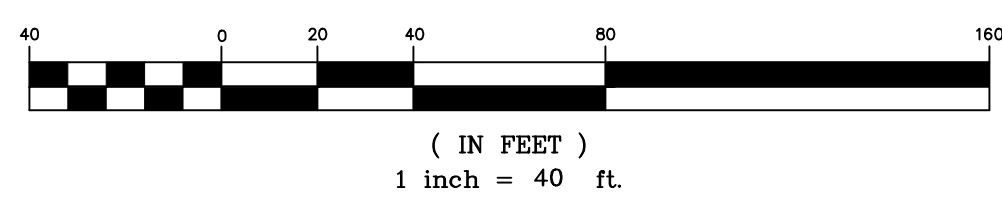
FOR MUNICIPAL APPROVAL ONLY-NOT INTENDED FOR CONSTRUCTION

DATE: 9/14/20
 CHK: DRH
 BY: MJB
 SCALE: 1"=30'
 FILE: 200233

LEGEND

R.O.W.	RIGHT OF WAY	MHO	MANHOLE
No.	NUMBER	CB	CATCHBASIN
P.O.B.	POINT OF BEGINNING	S	SIGN
S.F.	SQUARE FEET	FL	FENCE LINE
N/F	NOW OR FORMERLY	OW	OVERHEAD WIRE, UTILITY POLE & GUY WIRE
N	NORTH	TA	TRAFFIC FLOW ACCESS AREA
S	SOUTH	WS	WATER SHUT OFF
E	EAST	WV	WATER VALVE
W	WEST	HY	HYDRANT
L	LIBER	GV	GAS VALVE
P.	PAGE	SL	STREET LIGHT
ST	STORM LINE	CON	CONCRETE
S	SEWER LINE	NP	NEW PAVEMENT
W	WATER LINE		
G	GAS LINE		
UE	UNDERGROUND ELECTRIC		
100	PROPOSED CONTOURS		

GRAPHIC SCALE

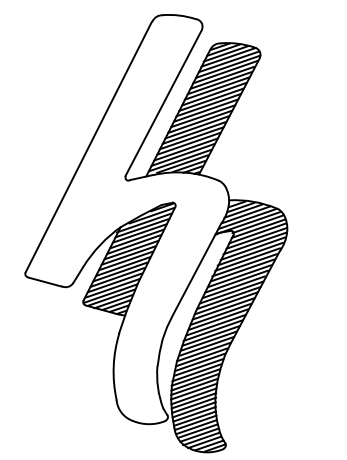


GENERAL NOTES

1. ACCESS FOR CITY'S MAINTENANCE STAFF/REPRESENTATIVES MUST BE MAINTAINED AT ALL TIMES TO THE TRAFFIC SIGNAL EQUIPMENT AT THIS INTERSECTION.
2. DAMAGE TO CITY SIDEWALKS, CURBS, AND ROADWAYS WILL BE THE SOLE RESPONSIBILITY OF THE DEVELOPER AND CONTRACTORS.
3. DEVELOPER AND CONTRACTORS ARE RESPONSIBLE FOR CALLING THE OFFICE OF THE CHIEF SUPERVISOR OF TRAFFIC ENGINEERING TO ARRANGE FOR PARKING RESTRICTIONS FOR THE PROJECT. ANY FEE FOR THE PARKING OR METER SPACES WILL BE THE RESPONSIBILITY OF THE DEVELOPER/CONTRACTOR. METER PARKING IS ON BROADWAY AND NON-METER PARKING IS ON LIVINGSTON AVE.
4. ONCE APPROVED THIS PLAN WILL REMAIN IN PLACE FOR THE DURATION OF THE PROJECT UNLESS A MODIFIED PLAN IS SUBMITTED AND APPROVED BY THE OFFICE OF CHIEF SUPERVISOR OF TRAFFIC ENGINEERING.

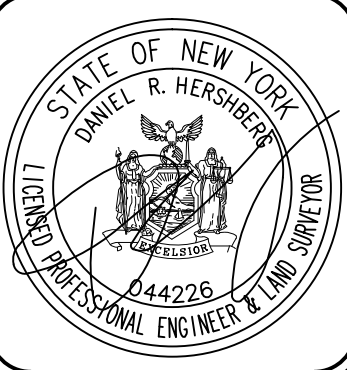
CONSTRUCTION SIGNS — ITEM 619.02

TEXT	M.U.T.C.D. NO.	APPROX. AREA (S.F.)
	R9-9	24" X 12" (2.0 S.F.)
	R9-11	24" X 12" (2.0 S.F.)



HERSHBERG & HERSHBERG
 Consulting Engineers and Land Surveyors
 18 Locust Street
 Albany, New York 12203

ALTERATION OF THIS DOCUMENT EXCEPT BY A LICENSED PROFESSIONAL ENGINEER OR LAND SURVEYOR, IS ILLEGAL

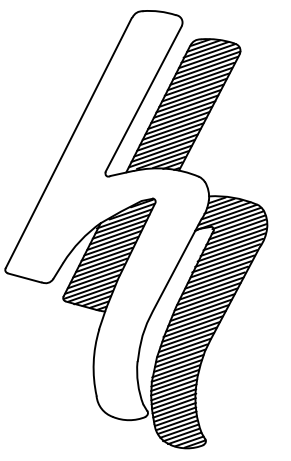
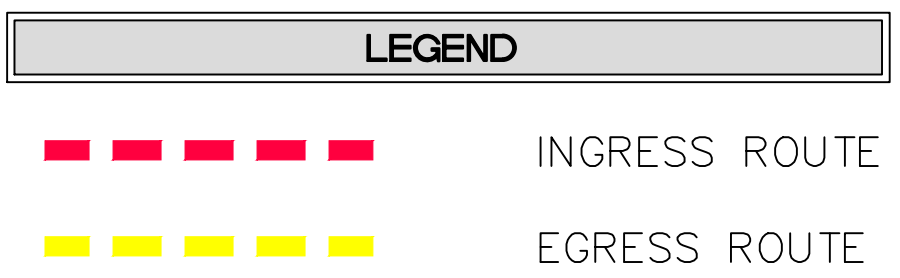


DATE	REVISIONS

MAINTENANCE AND PROTECTION OF TRAFFIC PLAN
22 HOLLAND AVENUE
CITY OF ALBANY, STATE OF NEW YORK

FILE: 2002233
 SCALE: AS NOTED
 BY: AS
 CHK: DRH
 DATE: 9/14/20
 200233-6.DWG

FOR MUNICIPAL APPROVAL ONLY-NOT INTENDED FOR CONSTRUCTION

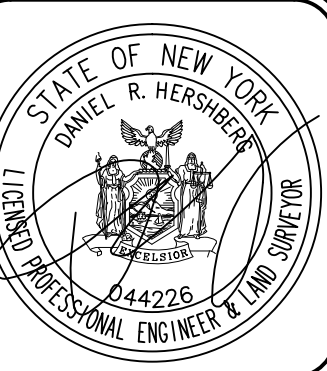


**HERSHBERG
&
HERSHBERG**

Consulting Engineers
and Land Surveyors

18 Locust Street
Albany, New York 12203

ALTERATION OF THIS
DOCUMENT EXCEPT BY A
LICENSED PROFESSIONAL
ENGINEER OR LAND
SURVEYOR, IS ILLEGAL

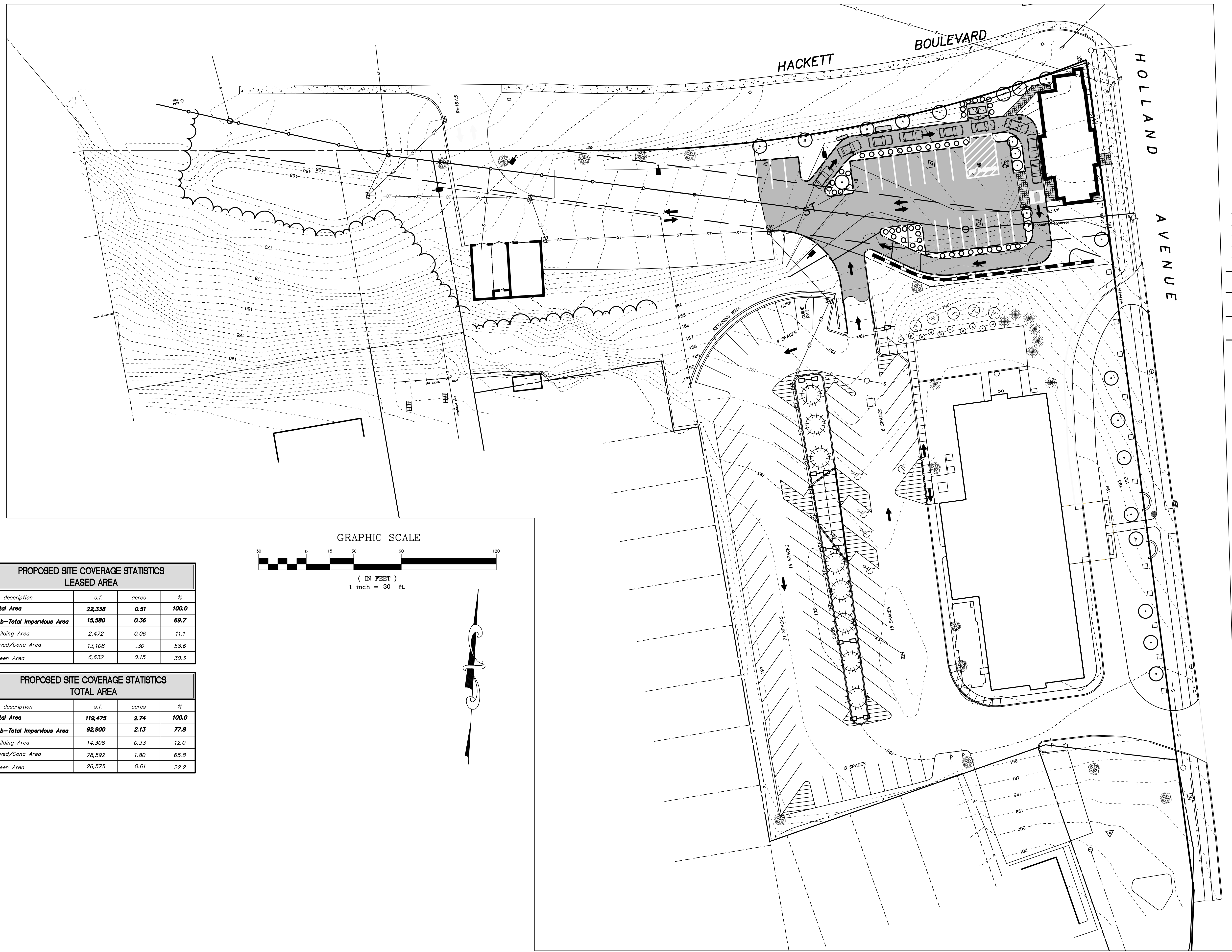


REVISIONS	DATE	REMARKS

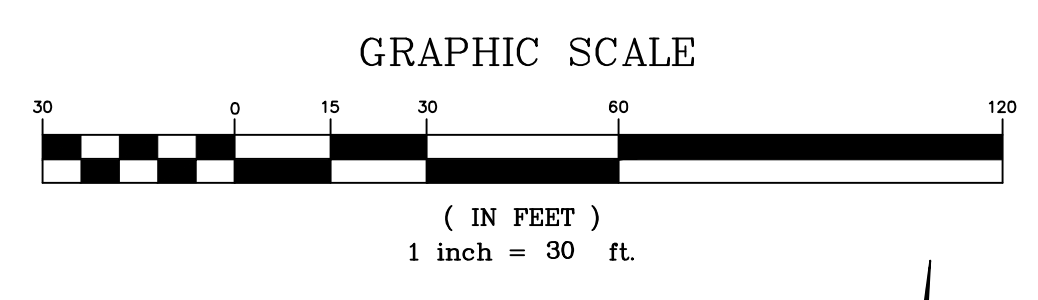
TRUCK ROUTING PLAN
22 HOLLAND AVENUE
CITY OF ALBANY, STATE OF NEW YORK

FILE: 200233 SCALE: AS NOTED BY: MB CHK: DPH DATE: 9/14/20 200233-6.DWG

FOR MUNICIPAL APPROVAL ONLY-NOT INTENDED FOR CONSTRUCTION

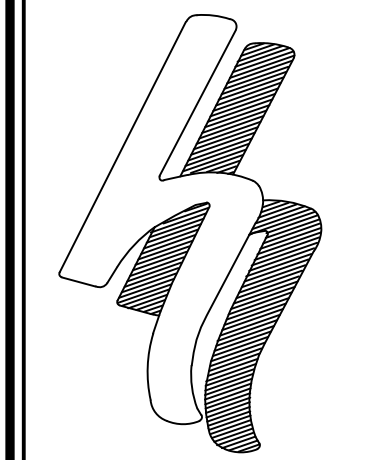


LEGEND			
R.O.W.	RIGHT OF WAY	MHO	MANHOLE
No.	NUMBER	CB	CATCHBASIN
P.O.B.	POINT OF BEGINNING	S	SIGN
S.F.	SQUARE FEET	-X-	FENCE LINE
N/F	NOW OR FORMERLY	---○---	OVERHEAD WIRE, UTILITY POLE & GUY WIRE
N	NORTH	↑	TRAFFIC FLOW ACCESS AREA
S	SOUTH	↓	WATER SHUT OFF
E	EAST	↻	WATER VALVE
W	WEST	⊕	HYDRANT
L	LIBER	⊗	GAS VALVE
P.	PAGE	○	STREET LIGHT
ST	STORM LINE	▒	CONCRETE
S	SEWER LINE	■	PAVEMENT
W	WATER LINE		
G	GAS LINE		
UE	UNDERGROUND ELECTRIC		
ST	NEW STORM SEWER		
W	NEW WATER MAIN		
W	WATER SHUT OFF		
W	CHECK VALVE		
W	NEW SANITARY SEWER FORCE MAIN		
W	NEW SANITARY SEWER GRAVITY MAIN		
IN	INCREASER		
-100	PROPOSED CONTOURS		



PROPOSED SITE COVERAGE STATISTICS LEASED AREA			
description	s.f.	acres	%
Total Area	22,338	0.51	100.0
Sub-Total Impervious Area	15,580	0.36	69.7
Building Area	2,472	0.06	11.1
Paved/Conc Area	13,108	.30	58.6
Green Area	6,632	0.15	30.3

PROPOSED SITE COVERAGE STATISTICS TOTAL AREA			
description	s.f.	acres	%
Total Area	118,475	2.74	100.0
Sub-Total Impervious Area	92,900	2.13	77.8
Building Area	14,308	0.33	12.0
Paved/Conc Area	78,592	1.80	65.8
Green Area	26,575	0.61	22.2



HERSHBERG & HERSHBERG
Consulting Engineers and Land Surveyors
18 Locust Street
Albany, New York 12203

ALTERATION OF THIS DOCUMENT EXCEPT BY A LICENSED PROFESSIONAL ENGINEER OR LAND SURVEYOR, IS ILLEGAL.



DATE	REVISIONS

OVERALL PLAN
22 HOLLAND AVENUE
ALBANY, N.Y.

DATE: 9/14/20
CHK: DRH
BY: MJB
SCALE: 1"=30'
FILE: 200233

FOR MUNICIPAL APPROVAL ONLY-NOT INTENDED FOR CONSTRUCTION