

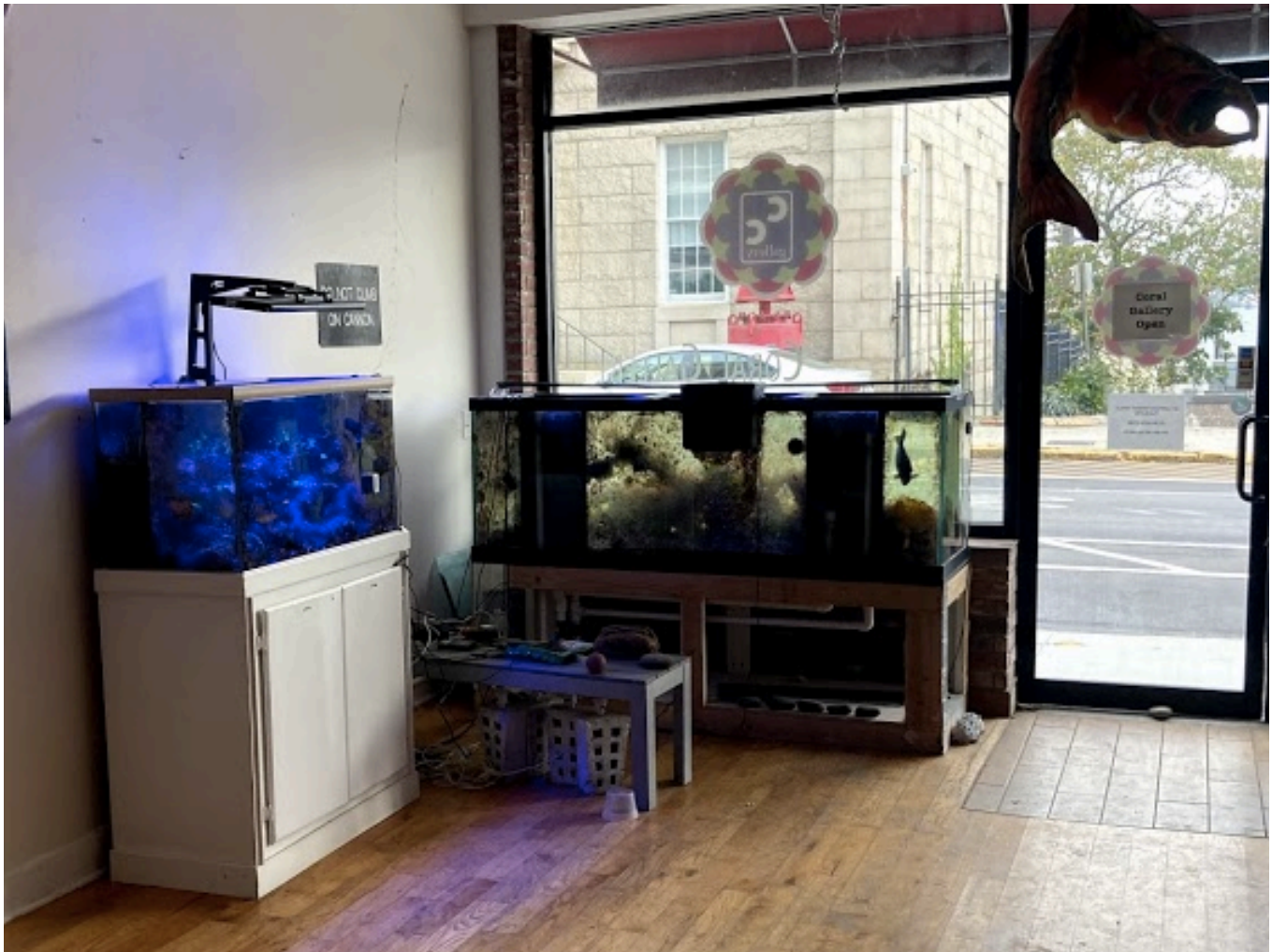
CapitalCoral Inc

Photographs of current operation in New London, CT
and proposed layout for new project at 20 Colvin
Avenue, Albany, NY

Note- layout will be significantly different. See last
page for proposed setup.

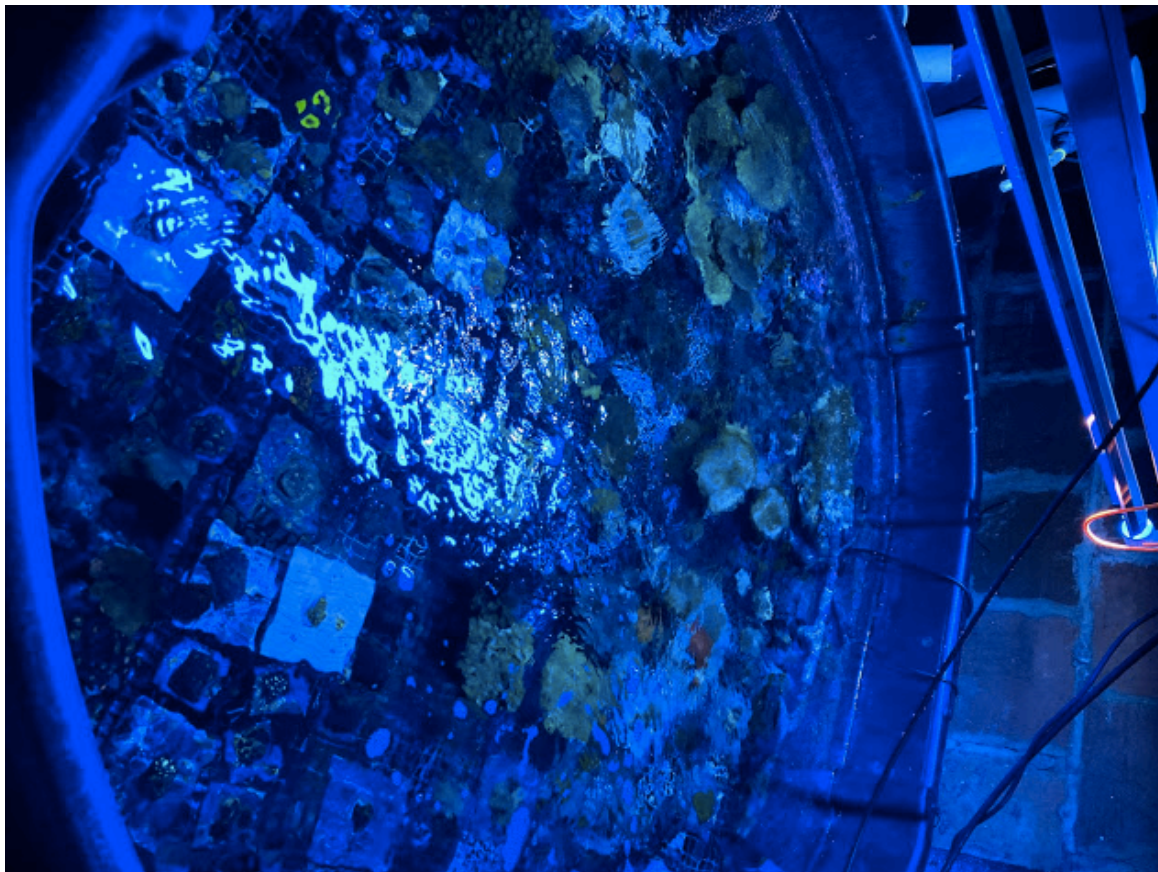
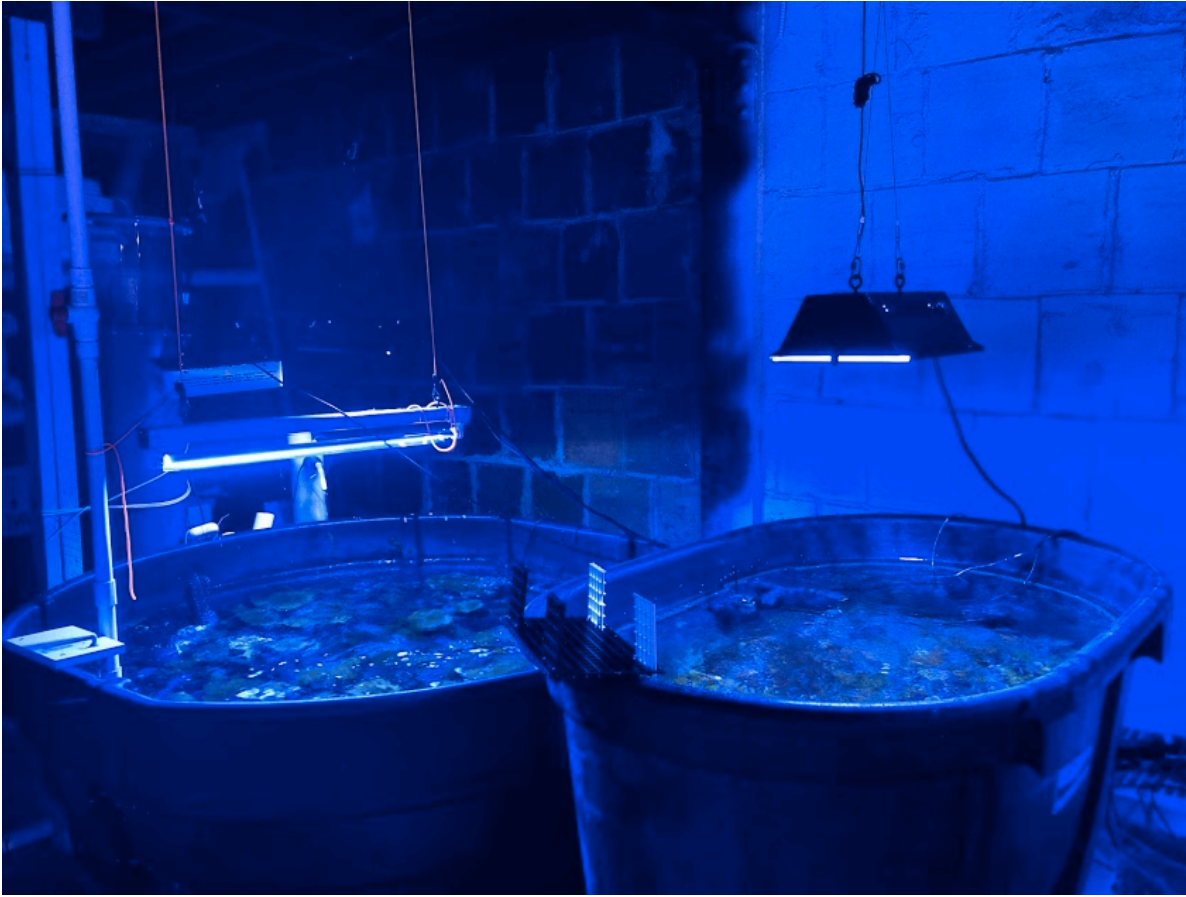
Upper Level

Layout of current operation necessitated splitting between the ground floor and the basement to provide adequate square footage. Main system in basement tied to majority of upper system.



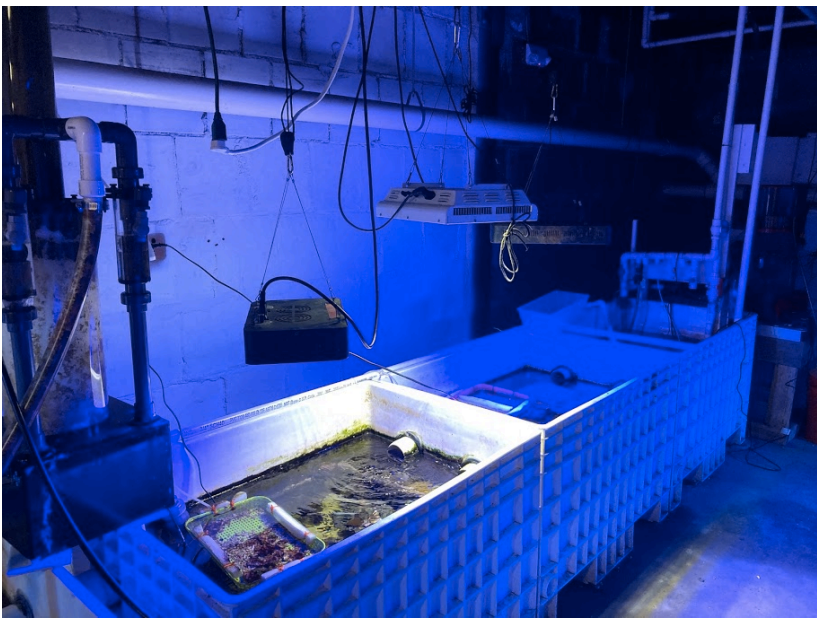
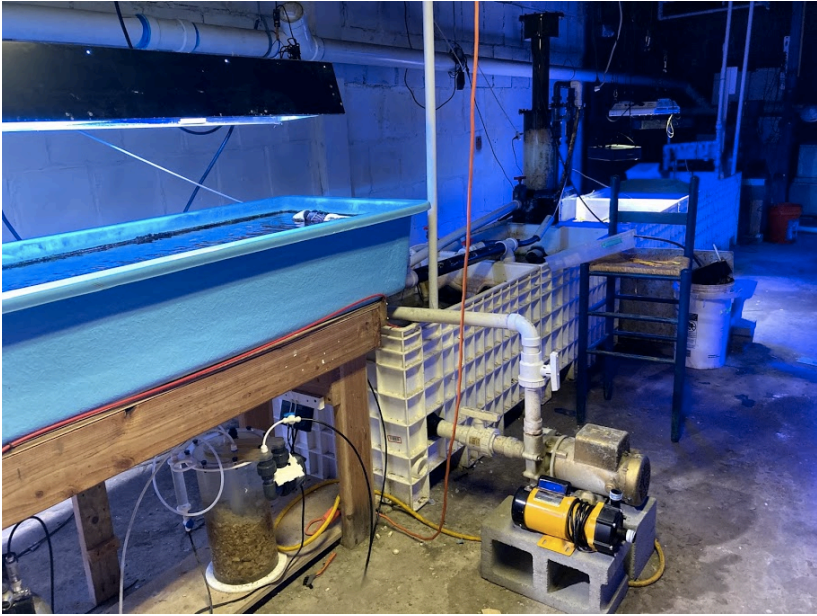


Basement

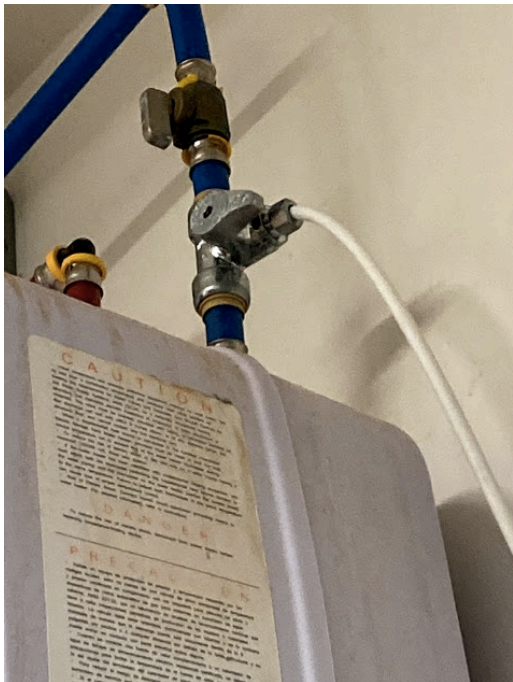




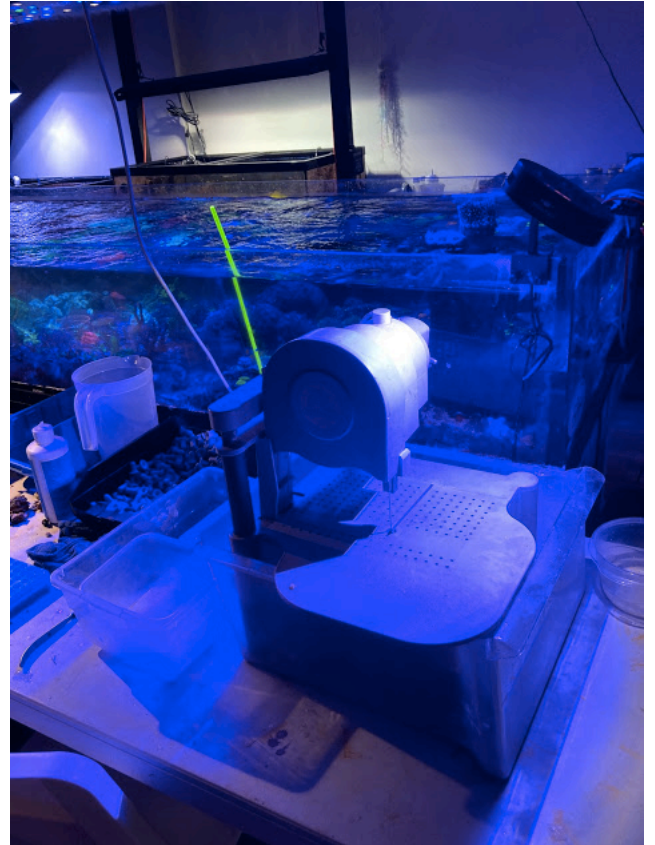
Basement



Water Purification and seawater mixing.



Coral Propagation tools



20 Colvin Avenue



Layout Warehouse 1

Layout Warehouse 2