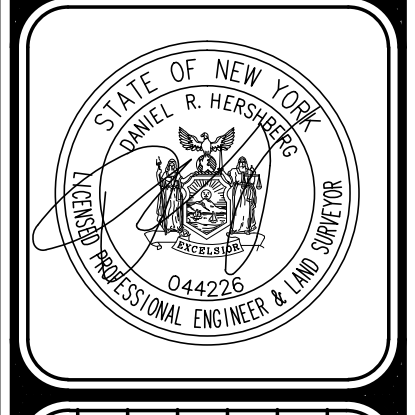


HERSHBERG & HERSHBERG
 Consulting Engineers and Land Surveyors
 18 Locust Street
 Albany, New York 12203

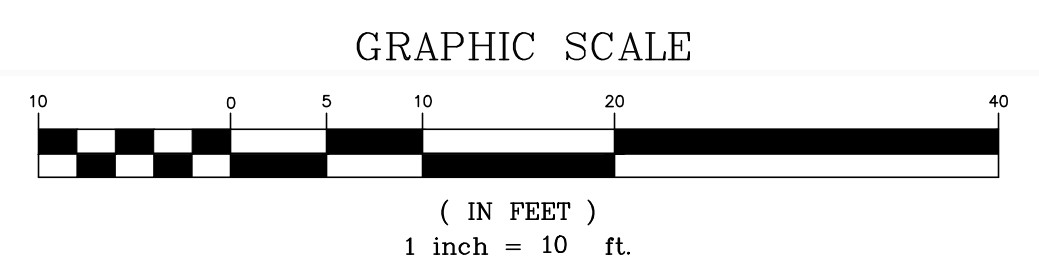
ALTERATION OF THIS DOCUMENT EXCEPT BY A LICENSED PROFESSIONAL ENGINEER OR LAND SURVEYOR, IS ILLEGAL.

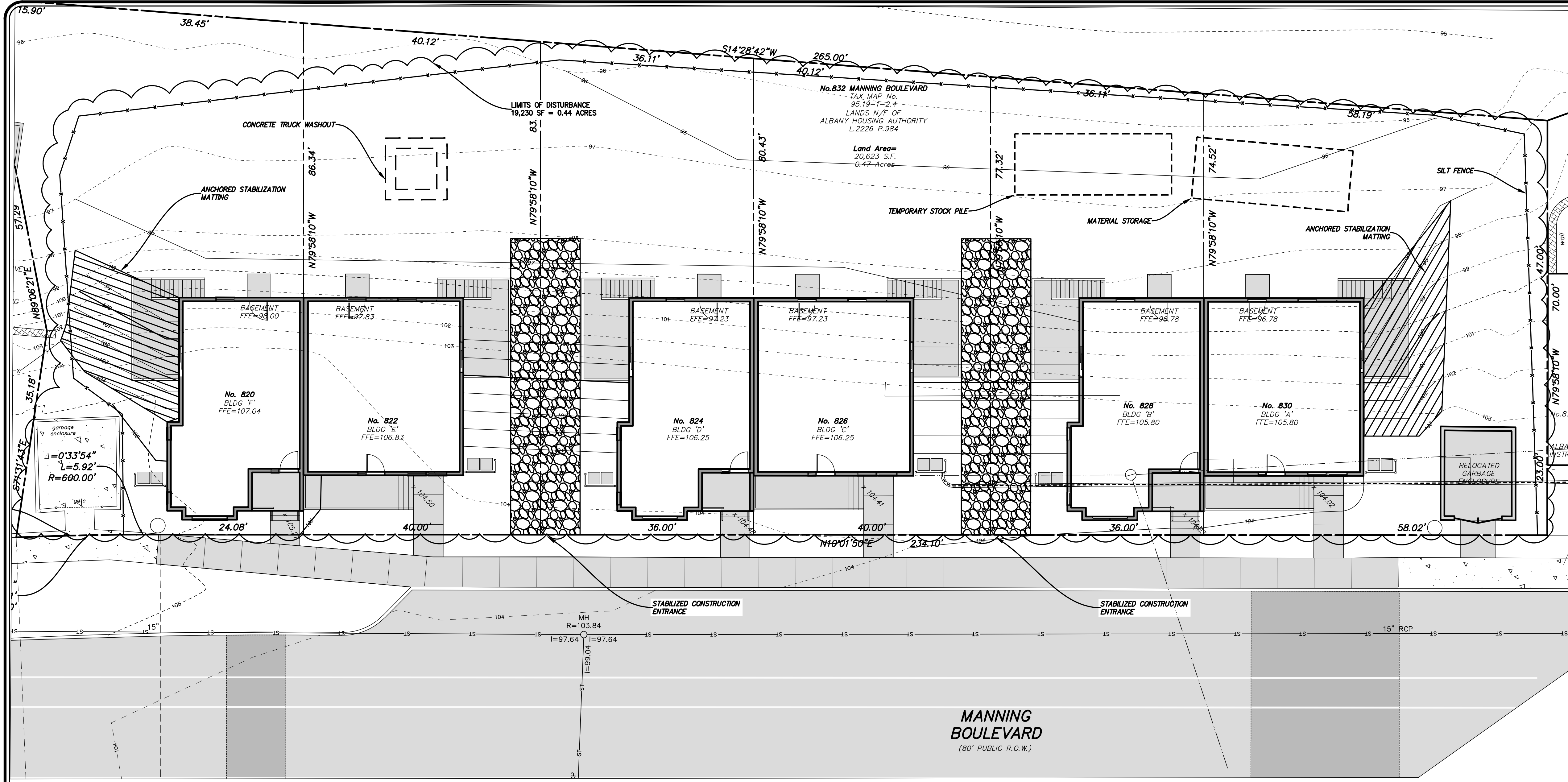


REVISIONS	DATE	REMARKS
	10/15/20	

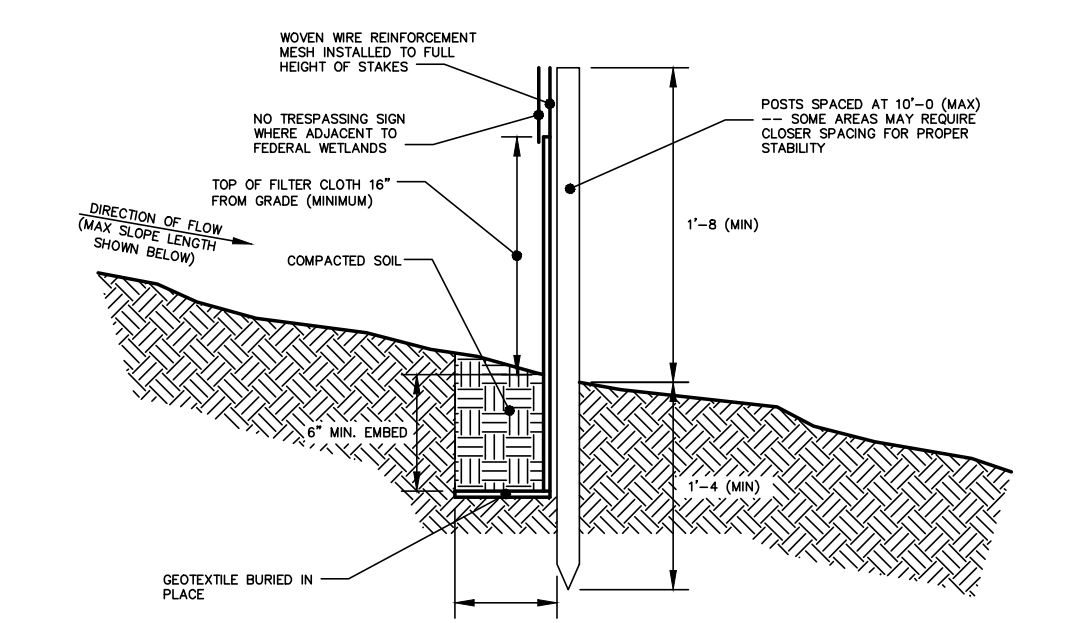
EXISTING CONDITIONS FOR
 832 MANNING BOULEVARD
 CITY OF ALBANY, ALBANY COUNTY, NEW YORK

FILE: 200102
 SCALE: 1"=10'
 GY: MLW
 CHK: DRH
 DATE: 4/29/20
 200102-2.DWG





LEGEND			
R.O.W.	RIGHT OF WAY	MHO	MANHOLE
No.	NUMBER	CB	CATCHBASIN
P.O.B.	POINT OF BEGINNING	—	SIGN
S.F.	SQUARE FEET	—	FENCE LINE
N/F	NOW OR FORMERLY	—	OVERHEAD WIRE, UTILITY POLE & GUY WIRE
N	NORTH	—	TRAFFIC FLOW ACCESS AREA
S	SOUTH	—	WATER SHUT OFF
E	EAST	—	WATER VALVE
W	WEST	—	HYDRANT
L	LIBER	—	GAS VALVE
P.	PAGE	—	STREET LIGHT
ST	STORM LINE	—	CONCRETE
SE	SEWER LINE	—	NEW PAVEMENT
W	WATER LINE	—	
G	GAS LINE	—	
UE	UNDERGROUND ELECTRIC	—	
—	PROPOSED CONTOURS	—	



- CONSTRUCTION SPECIFICATIONS FOR FABRICATED SILT FENCE**
- INSTALL SILT FENCE IN ACCORDANCE WITH THE JULY 2010 "NEW YORK STANDARDS AND SPECIFICATIONS FOR EROSION AND SEDIMENT CONTROL".
 - WOVEN WIRE FENCE TO BE FASTENED SECURELY TO WOODEN POSTS WITH WIRE TIES OR STAPLES. POSTS SHALL BE STEEL EITHER 1" OR 1 1/2" TYPE OR HARDWOOD.
 - FILTER CLOTH TO BE TO BE FASTENED SECURELY TO WOVEN WIRE FENCE WITH TIES SPACED EVERY 24" AT TOP AND MID SECTION. FENCE SHALL BE WOVEN WIRE, 6" MAX. MESH OPENING.
 - WHEN TWO SECTIONS OF FILTER CLOTH ADJOIN EACH OTHER THEY SHALL BE OVERLAPPED BY SIX INCHES AND FOLDED. FILTER CLOTH SHALL BE EITHER FILTER X, MIRA1 100K, STABILINKA T140N, OR APPROVED EQUIVALENT.
 - PREFABRICATED UNITS SHALL MEET THE MINIMUM REQUIREMENTS SHOWN.
 - MAINTENANCE SHALL BE PERFORMED AS NEEDED AND MATERIAL REMOVED WHEN "BOLUSES" DEVELOP IN THE SILT FENCE.

DESIGN CRITERIA:

1. DESIGN COMPUTATIONS ARE NOT REQUIRED FOR INSTALLATIONS OF 1 MONTH OR LESS. LONGER INSTALLATION PERIODS SHOULD BE DESIGNED FOR EXPECTED RUNOFF.

2. ALL SILT FENCES SHALL BE PLACED AS CLOSE TO THE AREA AS POSSIBLE, BUT AT LEAST 10 FEET FROM THE TOE OF A SLOPE STEEPER THAN 3H:1V TO ALLOW FOR MAINTENANCE AND ROLL DOWN. THE AREA BEYOND THE FENCE MUST BE UNDISTURBED OR STABILIZED.

3. THE TYPE OF SILT FENCE SPECIFIED FOR EACH LOCATION ON THE PLAN SHALL NOT EXCEED THE MAXIMUM SLOPE LENGTH AND MAXIMUM FENCE LENGTH REQUIREMENTS SHOWN IN THE FOLLOWING TABLE.

Slope	Steepness	Slope Length/Fence Length (ft.)		
		Standard (SF)	Reinforced (RSF)	Super (SSF)
<2%	<5:1	300/1500	N/A	N/A
2-10%	5:1 to 10:1	125/1000	250/2000	300/2500
10-20%	10:0 to 5:1	100/750	150/1000	200/1000
20-33%	5:1 to 3:1	60/750	80/750	100/1000
33-50%	3:1 to 2:1	40/250	70/350	100/500
>50%	>2:1	20/125	30/175	50/250

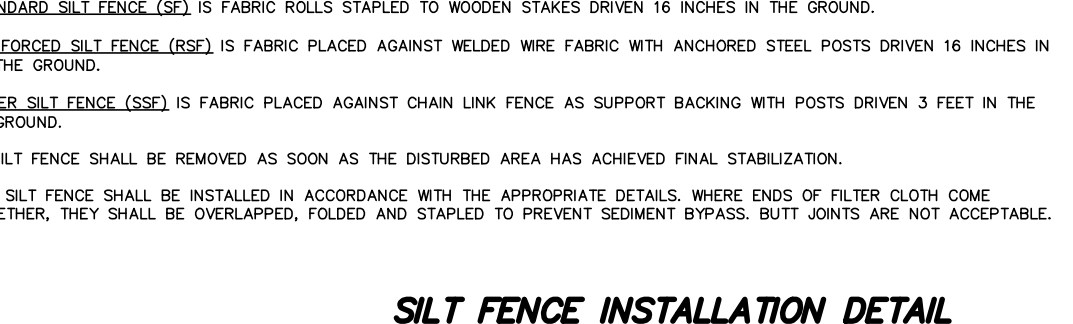
STANDARD SILT FENCE (SF) IS FABRIC ROLLS STAPLED TO WOODEN STAKES DRIVEN 16 INCHES IN THE GROUND.

REINFORCED SILT FENCE (RSF) IS FABRIC PLACED AGAINST WELDED WIRE FABRIC WITH ANCHORED STEEL POSTS DRIVEN 16 INCHES IN THE GROUND.

SUPER SILT FENCE (SSF) IS FABRIC PLACED AGAINST CHAIN LINK FENCE AS SUPPORT BACKING WITH POSTS DRIVEN 3 FEET IN THE GROUND.

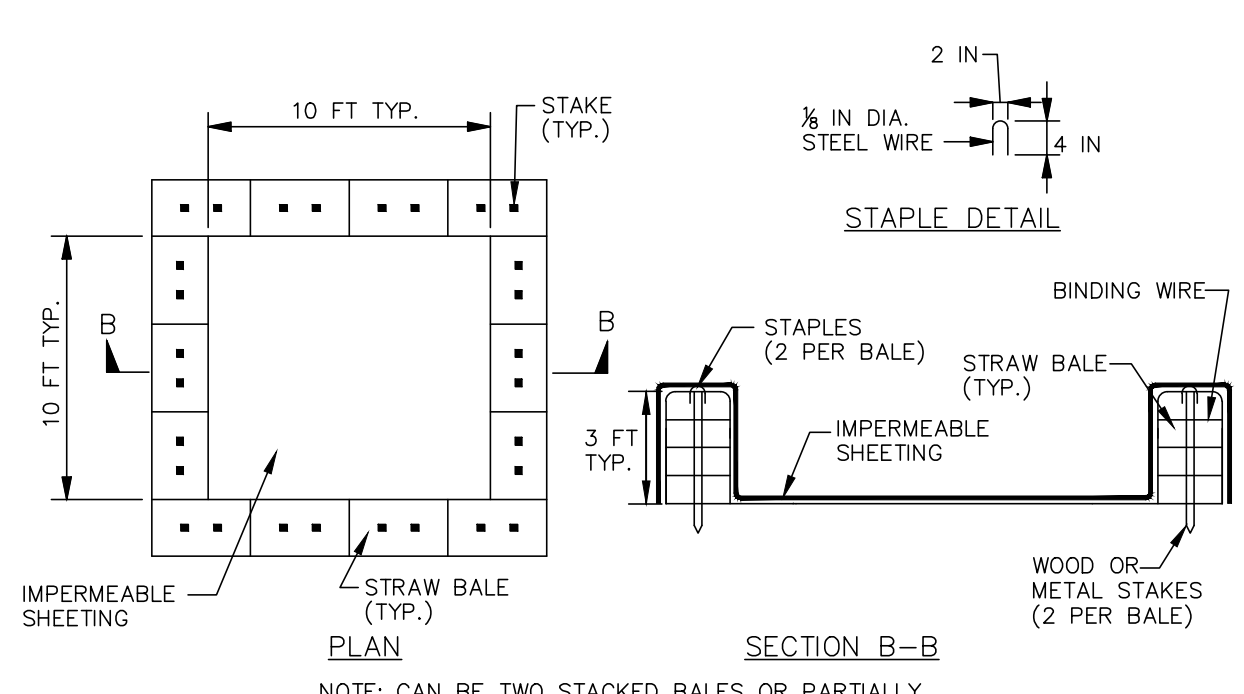
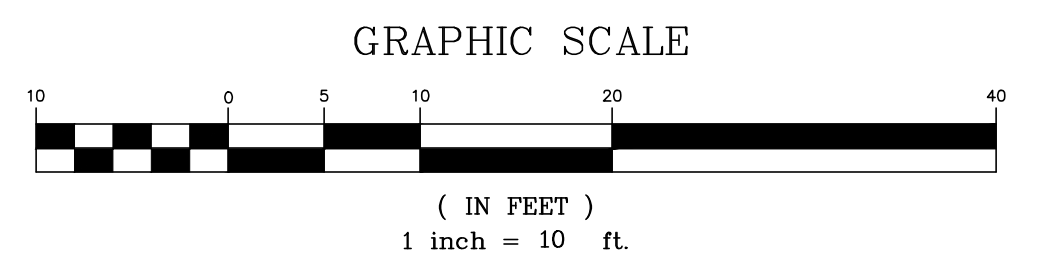
4. SILT FENCE SHALL BE REMOVED AS SOON AS THE DISTURBED AREA HAS ACHIEVED FINAL STABILIZATION.

THE SILT FENCE SHALL BE INSTALLED IN ACCORDANCE WITH THE APPROPRIATE DETAILS WHERE ENDS OF FILTER CLOTH COME TOGETHER, THEY SHALL BE OVERLAPPED, FOLDED AND STAPLED TO PREVENT SEDIMENT BYPASS. BUTT JOINTS ARE NOT ACCEPTABLE.

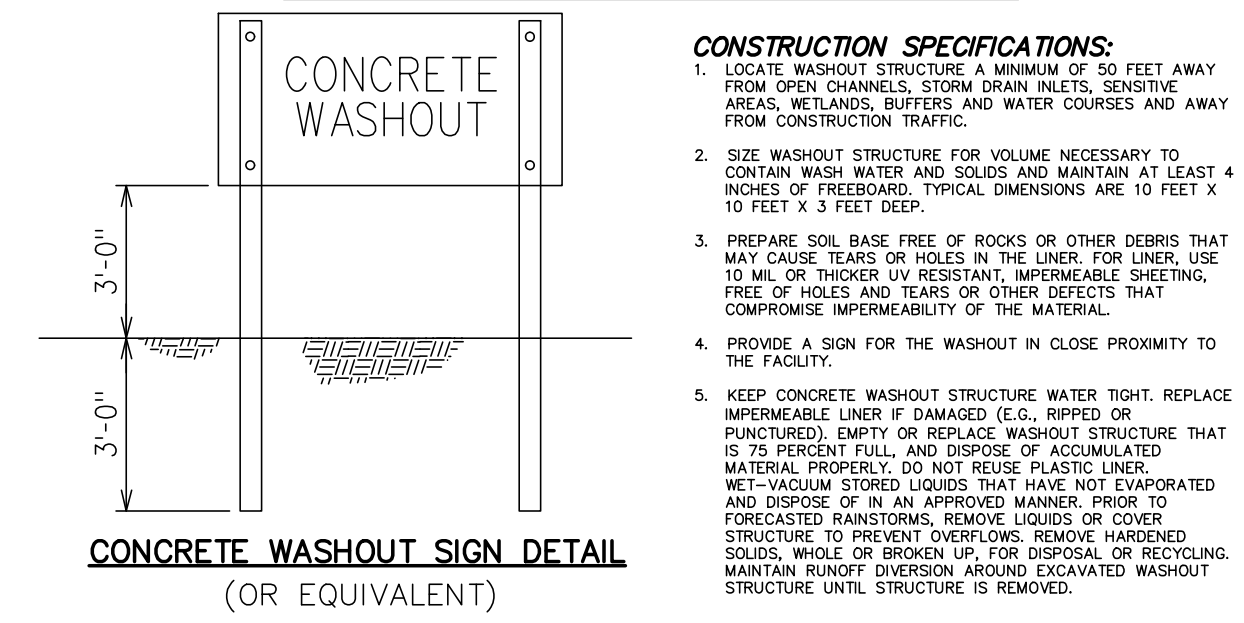


SILT FENCE INSTALLATION DETAIL
NOT TO SCALE

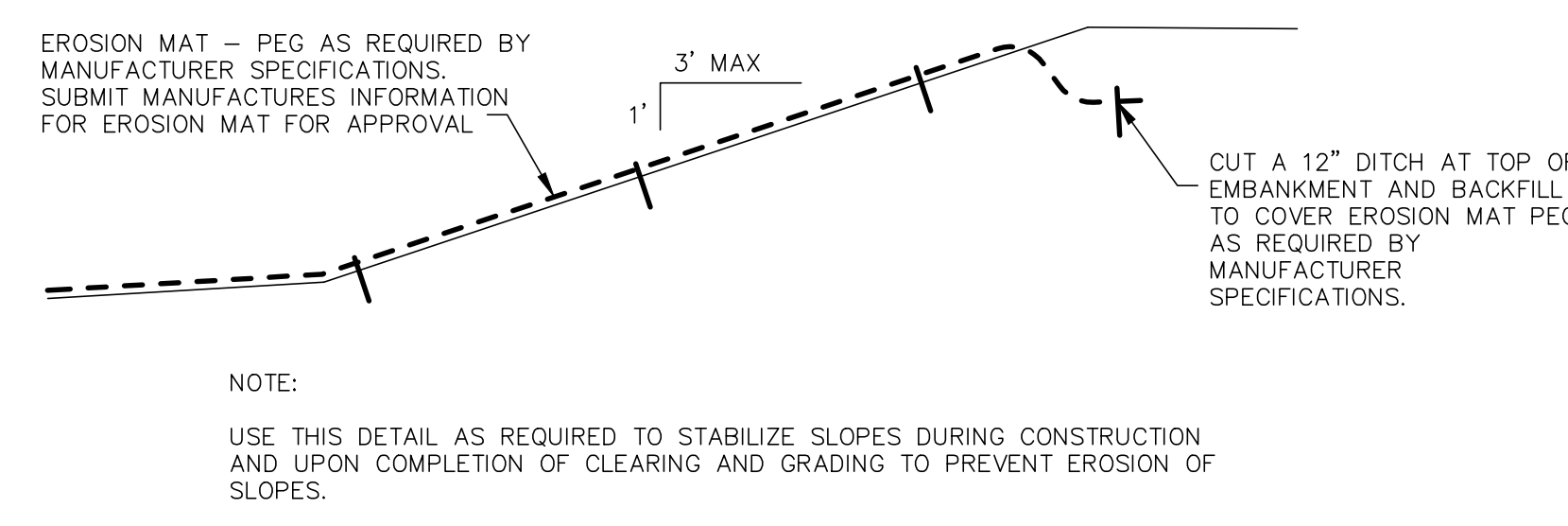
MANNING BOULEVARD
(80' PUBLIC R.O.W.)



ANCHORED STABILIZATION MATTING DETAIL
NOT TO SCALE



ONSITE CONCRETE TRUCK WASHOUT STRUCTURE DETAIL
NOT TO SCALE



TEMPORARY TOPSOIL STOCKPILE DETAIL
NOT TO SCALE

CONSTRUCTION SEQUENCING AND SEDIMENTATION AND EROSION CONTROL DURING CONSTRUCTION

- THE CONSTRUCTION SEQUENCE FOR THIS PROJECT WILL BE GOVERNED BY THE EROSION AND SEDIMENT CONTROL PLAN.
- CONSTRUCTION SEQUENCE**
- COMMENCE WORK ON SITE: WITHIN 10 DAYS OF PRE-CONSTRUCTION MEETING
 - INSTALL SEDIMENTATION FENCE AS INDICATED ON THE PLAN. PRIOR TO COMMENCEMENT OF ANY GRADING - FENCE TO REMAIN IN PLACE UNTIL ALL AREAS ARE STABILIZED.
 - GRADE AND PREPARE CONSTRUCTION ACCESS. PRIOR TO COMMENCEMENT OF ANY GRADING - CONSTRUCTION ENTRANCE TO REMAIN IN PLACE UNTIL ALL AREAS ARE STABILIZED.
 - THE EXISTING PAVEMENT MUST BE KEPT SWEEP CLEAN TO AVOID TRACKING MATERIALS ONTO ANY STREETS. CONTINUOUSLY FROM INCEPTION TO COMPLETION OF STABILIZATION OR FILING OF NOTICE OF TERMINATION.
 - MAINTAIN THIS AREA CLEAN OF DEBRIS AND VERIFY CONDITION AND SAFETY OF STORAGE OF MATERIALS LISTED BELOW. REQUIRES DAILY INSPECTION.
- CONSTRUCTION MATERIALS, CHEMICALS OR CONSTRUCTION DEBRIS MUST BE STORED IN SEALED RECEPTACLES, TRAILERS OR BUILDINGS. ANY STORAGE PILES OF MATERIALS MEANT FOR INSTALLATION (I.E. SAND, ETC.) MUST BE SURROUNDED BY SEDIMENTATION FENCE. THE LIST OF ANTICIPATED MATERIALS STORED ON SITE DURING CONSTRUCTION IS PROVIDED BELOW AND MUST BE UPDATED IF ANY ADDITIONAL MATERIALS ARE UTILIZED.**
- SELECT FILL
 - CONCRETE STRUCTURES
 - PIPES
 - PIPE SOLVENTS
 - CONCRETE FOR BUILDING
 - ROOFING MATERIALS FOR BUILDING
 - METAL MATERIALS FOR BUILDING
 - BUILDING MATERIALS FOR BUILDING
 - MSDS SHEETS MUST BE AVAILABLE ON SITE FOR ALL MATERIALS USED OR IMPORTED TO THE SITE.
 - ANY CHEMICAL SPILLS MUST BE CONTAINED IMMEDIATELY ON SITE AND REPORTED TO NYSDEC.
 - OIL AND GREASE SPILLS FROM EQUIPMENT SHALL BE TREATED IMMEDIATELY.
 - RESTORE PAVEMENT AND LAWNS. PRIOR TO FILING OF NOTICE OF TERMINATION.
 - FINE GRADE LANDSCAPE BEDS. PRIOR TO FILING OF NOTICE OF TERMINATION.
 - PLACE LANDSCAPE MATERIALS. PRIOR TO FILING OF NOTICE OF TERMINATION.
 - SEED AND MULCH. PRIOR TO FILING OF NOTICE OF TERMINATION.
 - OBTAIN APPROVAL ON NOTICE OF TERMINATION FROM MS4 COORDINATOR AFTER SITE HAS ACHIEVED 80% GRASS COVER. PRIOR TO FILING OF NOTICE OF TERMINATION.
 - FILE NOTICE OF TERMINATION.

HERSHBERG & HERSHBERG
Consulting Engineers and Land Surveyors
18 Locust Street
Albany, New York 12203

ALTERATION OF THIS DOCUMENT EXCEPT BY A LICENSED PROFESSIONAL ENGINEER OR LAND SURVEYOR, IS ILLEGAL.

STATE OF NEW YORK
JAMES R. HERSHBERG
LICENSED PROFESSIONAL ENGINEER & LAND SURVEYOR
044276

DATE	REVISIONS
10/15/20	
12/18/20	

REVISIONS

DATE: 10/15/20, 12/18/20

REVISIONS: REVISIONS

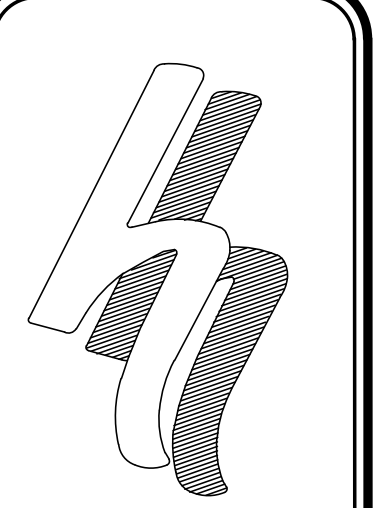
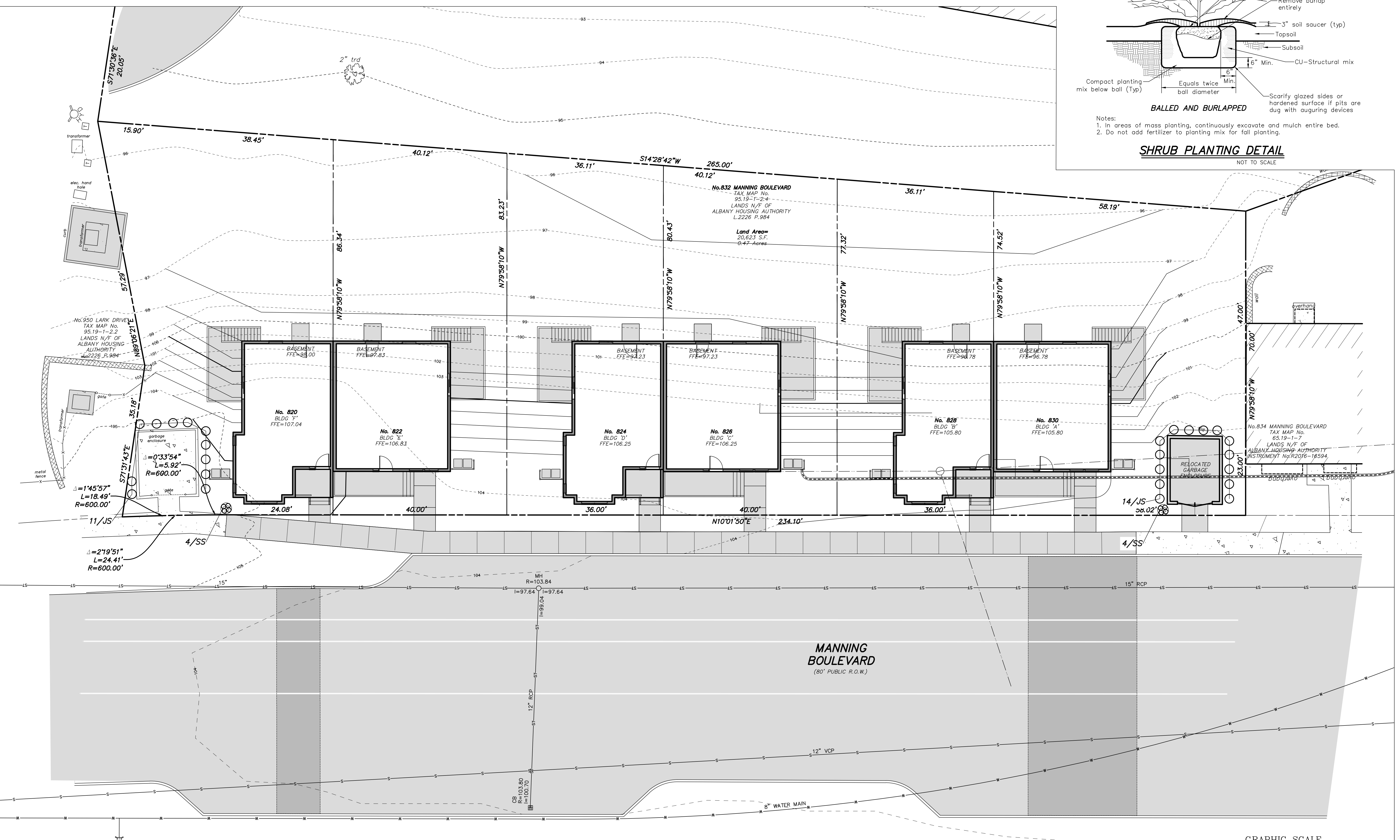
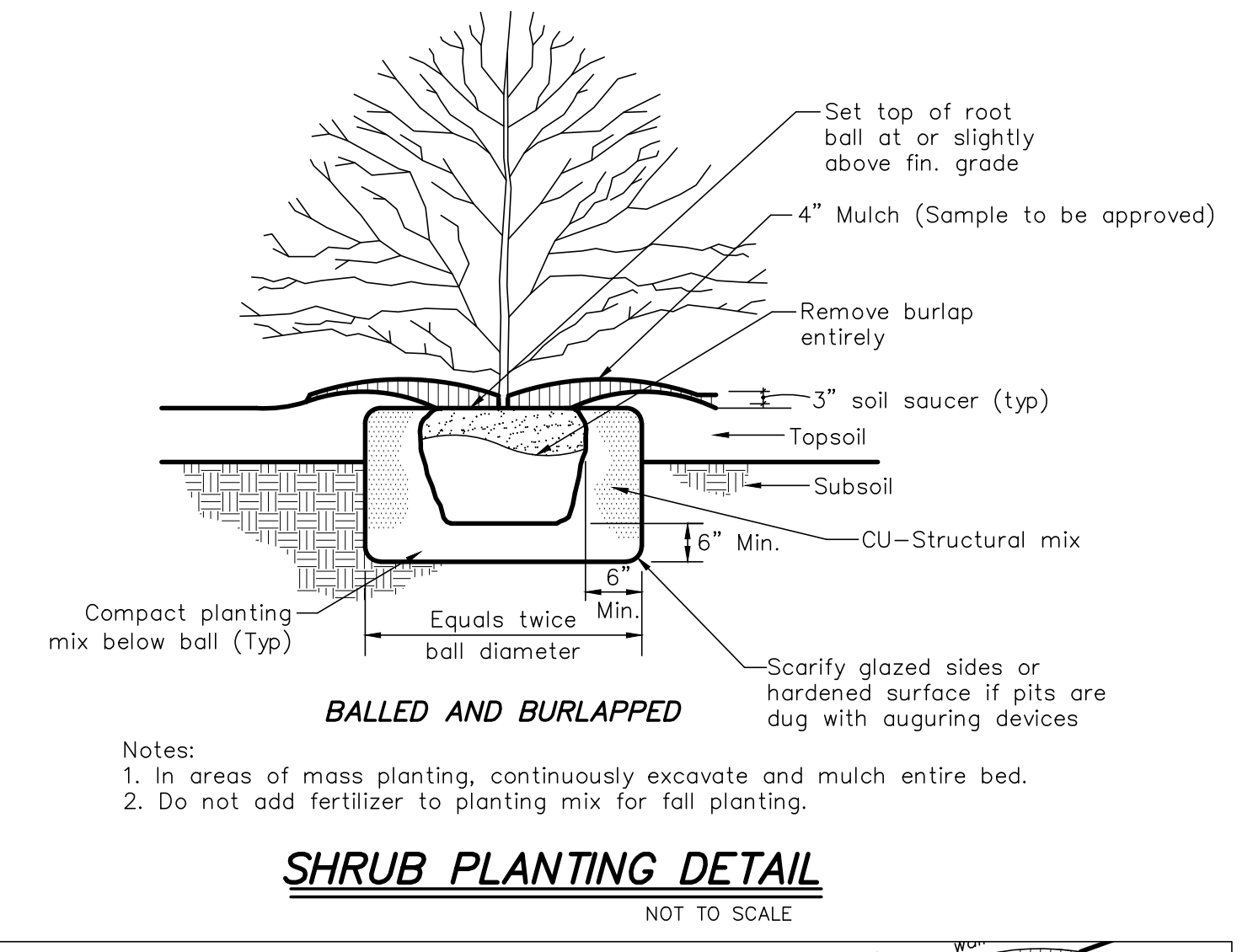
REVISIONS

EROSION AND SEDIMENT CONTROL PLAN FOR 832 MANNING BOULEVARD CITY OF ALBANY, ALBANY COUNTY, NEW YORK

FILE: 200102
DATE: 4/28/20
CHK: DRH
GUY: MLW
SCALE: 1"=10'
200102-2.DWG

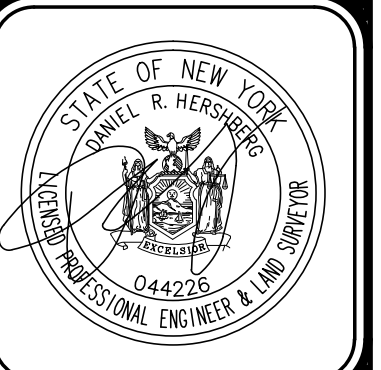
C4

PLANT MATERIAL SCHEDULE					
SYM	BOTANICAL NAME	COMMON NAME	SIZE	AMT	COMMENTS
GRASSES					
SS	SCHIZACHYRIUM SCOPARIUM	LITTLE BLUE STEM	#1 CONTAINER	8	CONTAINER GROWN
SHRUBS					
JS	JUNIPERUS CHINENSIS 'SPARTAN'	SPARTAN JUNIPER	5'-6" HT.	25	B & B



HERSHBERG & HERSHBERG
Consulting Engineers and Land Surveyors
18 Locust Street
Albany, New York 12203

ALTERATION OF THIS DOCUMENT EXCEPT BY A LICENSED PROFESSIONAL ENGINEER OR LAND SURVEYOR, IS ILLEGAL.



DATE	REVISIONS
10/15/20	
12/18/20	

LANDSCAPING PLAN FOR
832 MANNING BOULEVARD
CITY OF ALBANY, ALBANY COUNTY, NEW YORK

FILE: 200102
SCALE: 1"=10'
DATE: 4/28/20
CHKG: DRH
DWT: MLW
200102-2.DWG



CONSTRUCTION SIGNS – ITEM 619.02

TEXT	M.U.T.C.D. NO.	APPROX. AREA (S.F.)
	W20-7	36" X 36" (9.0 S.F.)
	R8-3A	24" X 30" (5.0 S.F.)
	G20-2	24" X 60" (10.0 S.F.)



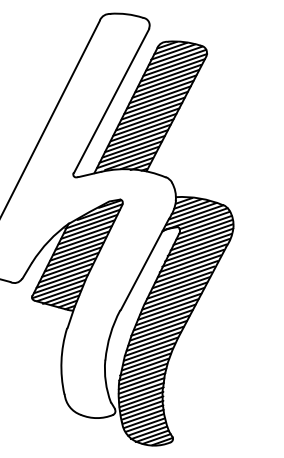
MUTCD TTC SIGN: "CONSTRUCTION AHEAD"
NOT TO SCALE

GENERAL NOTES

1. ACCESS FOR CITY'S MAINTENANCE STAFF/REPRESENTATIVES MUST BE MAINTAINED AT ALL TIMES TO THE TRAFFIC SIGNAL EQUIPMENT AT THIS INTERSECTION.
2. DAMAGE TO CITY SIDEWALKS, CURBS, AND ROADWAYS WILL BE THE SOLE RESPONSIBILITY OF THE DEVELOPER AND CONTRACTORS.
3. DEVELOPER AND CONTRACTORS ARE RESPONSIBLE FOR CALLING THE OFFICE OF THE CHIEF SUPERVISOR OF TRAFFIC ENGINEERING TO ARRANGE FOR PARKING RESTRICTIONS FOR THE PROJECT. ANY FEE FOR THE PARKING OR METER SPACES WILL BE THE RESPONSIBILITY OF THE DEVELOPER/CONTRACTOR. METER PARKING IS ON BROADWAY AND NON-METER PARKING IS ON LIVINGSTON AVE.
4. ONCE APPROVED THIS PLAN WILL REMAIN IN PLACE FOR THE DURATION OF THE PROJECT UNLESS A MODIFIED PLAN IS SUBMITTED AND APPROVED BY THE OFFICE OF CHIEF SUPERVISOR OF TRAFFIC ENGINEERING.

LEGEND

	CONE
	FLAGGER
	PLASTIC DRUM
	JERSEY BARRIER
	SIGN
	WORK AREA



HERSHBERG & HERSHBERG

Consulting Engineers and Land Surveyors

18 Locust Street
Albany, New York 12203

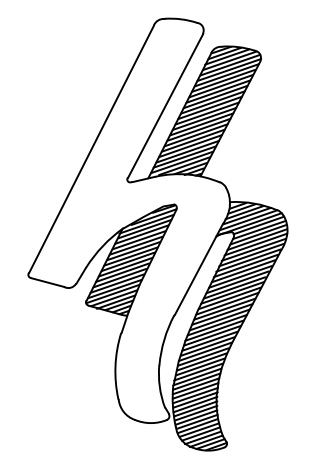
ALTERATION OF THIS DOCUMENT EXCEPT BY A LICENSED PROFESSIONAL ENGINEER OR LAND SURVEYOR, IS ILLEGAL.



DATE	REVISIONS
10/15/20	
12/16/20	

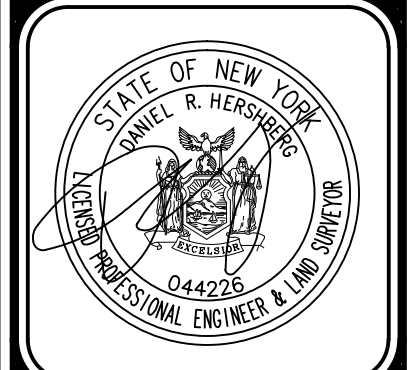
**MAINTENANCE AND PROTECTION OF TRAFFIC PLAN FOR
832 MANNING BOULEVARD
CITY OF ALBANY, ALBANY COUNTY, NEW YORK**

FILE: 200102 SCALE: AS NOTED DATE: 4/28/20 CHK: DRH GY: MLW



HERSHBERG & HERSHBERG
 Consulting Engineers and Land Surveyors
 18 Locust Street
 Albany, New York 12203

ALTERATION OF THIS DOCUMENT EXCEPT BY A LICENSED PROFESSIONAL ENGINEER OR LAND SURVEYOR, IS ILLEGAL.



REVISIONS	DATE	REMARKS
10/15/20		
12/18/20		



GENERAL NOTES

- ACCESS FOR CITY'S MAINTENANCE STAFF/REPRESENTATIVES MUST BE MAINTAINED AT ALL TIMES TO THE TRAFFIC SIGNAL EQUIPMENT AT THIS INTERSECTION.
- DAMAGE TO CITY SIDEWALKS, CURBS, AND ROADWAYS WILL BE THE SOLE RESPONSIBILITY OF THE DEVELOPER AND CONTRACTORS.
- DEVELOPER AND CONTRACTORS ARE RESPONSIBLE FOR CALLING THE OFFICE OF THE CHIEF SUPERVISOR OF TRAFFIC ENGINEERING TO ARRANGE FOR PARKING RESTRICTIONS FOR THE PROJECT. ANY FEE FOR THE PARKING OR METER SPACES WILL BE THE RESPONSIBILITY OF THE DEVELOPER/CONTRACTOR. METER PARKING IS ON BROADWAY AND NON-METER PARKING IS ON LIVINGSTON AVE.
- ONCE APPROVED THIS PLAN WILL REMAIN IN PLACE FOR THE DURATION OF THE PROJECT UNLESS A MODIFIED PLAN IS SUBMITTED AND APPROVED BY THE OFFICE OF CHIEF SUPERVISOR OF TRAFFIC ENGINEERING.

LEGEND	
	CONE
	FLAGGER
	PLASTIC DRUM
	JERSEY BARRIER
	SIGN
	WORK AREA

MAINTENANCE AND PROTECTION OF TRAFFIC NOTES

- MAINTENANCE AND PROTECTION OF TRAFFIC SHALL BE PROVIDED IN ACCORDANCE WITH SECTION 619 OF THE JANUARY 1, 2019 NYS STANDARD SPECIFICATIONS AND THE NEW YORK STATE MANUAL OF UNIFORM TRAFFIC CONTROL DEVICES (M.U.T.C.D.) DATED MAY 2012 AND ALL OTHER APPLICABLE PROVISIONS CONTAINED IN THIS CONTRACT. ALL SIGN NUMBERS REFER TO THE M.U.T.C.D.
- THE FINAL RESPONSIBILITY FOR THE PROTECTION OF THE TRAVELING PUBLIC AND HIS OWN PERSONNEL SHALL REST WITH THE CONTRACTOR.
- PRIOR TO THE START OF WORK, THE CONTRACTOR MAY SUBMIT ANY PROPOSED CHANGES TO THE TRAFFIC CONTROL PLAN TO THE ENGINEER FOR APPROVAL. ANY CHANGE WHICH ALTERS THE BASIC CONCEPT OF THE PLAN MUST BE APPROVED BY THE REGIONAL DIRECTOR OR HIS DESIGNEE.
- VEHICLES AND CONSTRUCTION EQUIPMENT BELONGING TO THE CONTRACTOR OR THE CONTRACTOR'S EMPLOYEES SHALL BE MOVED A MINIMUM OF 30 FEET FROM THE EDGE OF PAVEMENT DURING NON-WORKING HOURS.
- DURING WORKING HOURS, NO CONSTRUCTION MATERIAL MAY BE STORED ON THE ROADWAY OR ROADBED EXCEPT IN A PROTECTED WORK ZONE.
- THE CONTRACTOR SHALL MAINTAIN ACCESS TO ALL PROPERTIES IN THE VICINITY OF THE PROJECT SITE AT ALL TIMES.
- SIGN LOCATIONS SHOWN ON THE PLANS ARE APPROXIMATE. ACTUAL LOCATION SHALL BE ADAPTED TO PREVAILING CONDITIONS.
- SIGNS THAT ARE NOT APPLICABLE SHALL BE COVERED OR OBSCURED FROM SIGHT.
- THE W20-7 FLAGGER SIGN SHALL BE USED WHENEVER FLAGGING OCCURS FOR MORE THAN A BRIEF PERIOD OF TIME. THE SIGN SHALL BE PROMPTLY REMOVED, COVERED OR FACED AWAY FROM TRAFFIC WHEN THE FLAGGING OPERATION CEASES.
- THE CONTRACTOR SHALL BE RESPONSIBLE FOR MAINTAINING ALL TRAFFIC CONTROL DEVICES REQUIRED DURING CONSTRUCTION AND MAKING SURE ALL SIGNS, CONES AND DRUMS ARE IN PLACE AND IN GOOD CONDITION.
- THE CONTRACTOR SHALL MAINTAIN ALL EXISTING SIGNS FOR THE DURATION OF THE PROJECT OR UNTIL NEW REPLACEMENT SIGNS ARE INSTALLED. ALL COSTS TO WORK AROUND, REPLACE ON TEMPORARY POSTS OR TO TEMPORARILY RELOCATE EXISTING SIGNS SHALL BE INCLUDED IN THE PRICE BID FOR ITEM 619.01 - BASIC MAINTENANCE & PROTECTION OF TRAFFIC.
- LENGTH OF TAPERS SHOWN ON THE MAINTENANCE AND PROTECTION OF TRAFFIC GENERAL PLAN SHALL BE DETERMINED FROM SECTION 6C.08 OF THE M.U.T.C.D.. CONE SPACING SHALL BE DETERMINED FROM SECTION 6F.64 OF THE M.U.T.C.D..
- NO ATTEMPT HAS BEEN MADE TO SHOW THE LOCATION OF ANY UNDERGROUND UTILITIES WHICH MAY EXIST WITHIN OR ADJACENT TO THE PROJECT AREA. PRIOR TO THE UTILIZATION OF THE INFORMATION SHOWN HERON, U.F.P.O. SHOULD BE NOTIFIED (811) FOR THE VERIFICATION OF THE EXISTENCE OF ANY AND ALL SUCH UTILITIES.
- IT SHALL BE BE THE CONTRACTOR'S SOLE RESPONSIBILITY FOR ANY DAMAGE INCURRED DURING EXCAVATION OPERATIONS. ALL COSTS RELATED TO THE REPAIR OF DAMAGED UTILITIES SHALL BE BORNE BY THE CONTRACTOR AT NO ADDITIONAL COST TO THE OWNER.
- ALL CONSTRUCTION SIGNS SHALL BE PAID FOR UNDER ITEM 619.02. CONSTRUCTION SIGN MATERIALS SHALL COMPLY WITH SECTION 619-2 OF THE NYSOT STANDARD SPECIFICATIONS.
- WORK ZONES LEFT OVERNIGHT SHALL BE PROTECTED WITH THE APPROPRIATE WARNING SIGNS SUPPLEMENTED WITH TYPE "A" LOW INTENSITY WARNING LIGHTS. DRUMS OR BARRICADES SHALL BE USED FOR CHANNELIZATION. TWO-WAY TRAVEL SHALL BE PROVIDED DURING NON-WORKING HOURS.

**MAINTENANCE AND PROTECTION OF TRAFFIC PLAN (PHASE A) FOR
 852 MANNING BOULEVARD
 CITY OF ALBANY, ALBANY COUNTY, NEW YORK**



END
CONSTRUCTION

SIDEWALK
DETOUR

CONSTRUCTION FENCE

SIDEWALK
DETOUR

FLAGGER

SECURITY FENCE ON
JERSEY BARRIERS

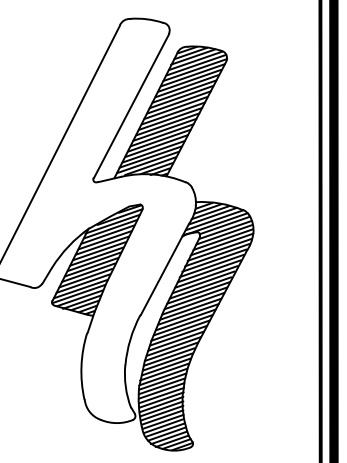
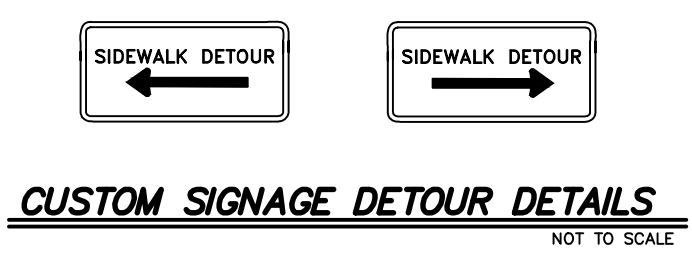
FLAGGER

CONSTRUCTION FENCE

END
CONSTRUCTION

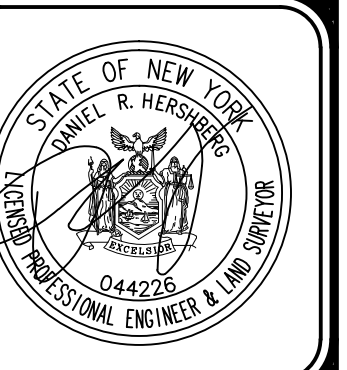
LEGEND	
	CONE
	FLAGGER
	PLASTIC DRUM
	JERSEY BARRIER
	SIGN
	WORK AREA

- GENERAL NOTES**
1. ACCESS FOR CITY'S MAINTENANCE STAFF/REPRESENTATIVES MUST BE MAINTAINED AT ALL TIMES TO THE TRAFFIC SIGNAL EQUIPMENT AT THIS INTERSECTION.
 2. CONTRACTOR MUST PROTECT THE TRAFFIC SIGNAL EQUIPMENT BOTH ABOVE AND BELOW EXISTING GRADE, AT THIS INTERSECTION, FROM DAMAGE FROM WORK ACTIVITIES AT THIS SITE.
 3. WHERE PEDESTRIANS ARE DIVERTED INTO THE TEMPORARY WALKWAY BEHIND THE CONCRETE BARRIER, ADA COMPLIANT RAMPS MUST BE INSTALLED AT THE TRANSITIONS FROM SIDEWALK TO THE NEW PATH. THESE RAMPS MUST BE MAINTAINED AT ALL TIMES DURING THE PROJECT.
 4. DAMAGE TO CITY SIDEWALKS, CURBS, AND ROADWAYS WILL BE THE SOLE RESPONSIBILITY OF THE DEVELOPER AND CONTRACTORS.
 5. DEVELOPER AND CONTRACTORS ARE RESPONSIBLE FOR CALLING THE OFFICE OF THE CHIEF SUPERVISOR OF TRAFFIC ENGINEERING TO ARRANGE FOR PARKING RESTRICTIONS FOR THE PROJECT. ANY FEE FOR THE PARKING OR METER SPACES WILL BE THE RESPONSIBILITY OF THE DEVELOPER/CONTRACTOR. METER PARKING IS ON BROADWAY AND NON-METER PARKING IS ON LIVINGSTON AVE.
 6. ONCE APPROVED THIS PLAN WILL REMAIN IN PLACE FOR THE DURATION OF THE PROJECT UNLESS A MODIFIED PLAN IS SUBMITTED AND APPROVED BY THE OFFICE OF CHIEF SUPERVISOR OF TRAFFIC ENGINEERING.
 7. DAMAGE TO CITY SIDEWALKS, CURBS, AND ROADWAYS WILL BE THE SOLE RESPONSIBILITY OF THE DEVELOPER AND CONTRACTORS.



HERSHBERG & HERSHBERG
Consulting Engineers and Land Surveyors
18 Locust Street
Albany, New York 12203

ALTERATION OF THIS DOCUMENT EXCEPT BY A LICENSED PROFESSIONAL ENGINEER OR LAND SURVEYOR, IS ILLEGAL.



REVISIONS	DATE	REMARKS
	10/15/20	
	12/18/20	

**MAINTENANCE AND PROTECTION OF TRAFFIC PLAN (PHASE B) FOR
832 MANNING BOULEVARD
CITY OF ALBANY, ALBANY COUNTY, NEW YORK**

FILE: 200102
SCALE: AS NOTED
CHK: DRH
BY: MLW
DATE: 4/28/20
200102-2.DWG