

LEGEND

PROPOSED DECIDUOUS TREE

PROPOSED CONIFEROUS TREE

PROPOSED SHRUBS & PERENNIALS

AREAS TO BE PLANTED WITH SOD

SYNTHETIC TURF DECK IN DECK RECREATION AREAS

GRASS AND PERENNIAL MIX FOR DECK PLANTERS AND GREEN ROOF MODULES

LANDSCAPE EDGING

NOTE: PLANT KEYS ARE LOCATED ON SHEET L401.

- NOTES:
1. LANDSCAPE CONTRACTOR SHALL VERIFY FINAL SELECTION OF PLANT MATERIALS WITH THE LANDSCAPE ARCHITECT PRIOR TO INSTALLATION.
 2. REFER TO L100, L101 AND L102 FOR LANDSCAPE EDGING LAYOUT.
 3. PRIOR TO TREE AND SHRUB INSTALLATION ALL UNDERGROUND UTILITY LOCATIONS SHOULD BE VERIFIED BY HAND EXCAVATION. TREES SHOULD BE PLANTED A MINIMUM OF 5' FROM ALL UNDERGROUND UTILITIES WHEREVER POSSIBLE. REFER TO ELECTRICAL PLAN AND COORDINATE WITH PROJECT ELECTRICIAN FOR NEW ELECTRICAL WORK.
 4. APPLICABLE STANDARDS "AMERICAN STANDARD FOR NURSERY STOCK" BY THE AMERICAN ASSOCIATION OF NURSERYMEN" AND "STANDARD PLANT NAMES" BY THE AMERICAN JOINT COMMITTEE ON HORTICULTURAL NOMENCLATURE, ARE A PART OF THIS SPECIFICATION. ALL PLANTS SHALL BE NURSERY GROWN, NOT GATHERED IN THE FIELD.
 5. ALL PLANTING AREAS, UNLESS OTHERWISE NOTED SHALL RECEIVE MIN. 3" OF FINE SHREDDED CEDAR MULCH THAT SHALL BE APPROVED BY LANDSCAPE ARCHITECT BY SUBMITTAL.
 6. ALL DISTURBED AREAS WITHIN PROJECT LIMITS NOT COVERED WITH PAVEMENT OR PLANTING/MULCH BED OR SOD, SHALL BE SMOOTH GRADED, WITH 3" TOPSOIL AND SEEDED.
 7. PROPOSED AND EXISTING TREES TO BE LIMBED UP AND PRUNED AS DIRECTED BY LANDSCAPE ARCHITECT.
 8. THE CONTRACTOR SHALL PROPERLY WATER, MOW AND OTHERWISE MAINTAIN ANY AND ALL NEWLY SEEDED GRASS WITHIN THE LIMIT OF WORK AREA UNTIL ESTABLISHED AT A HEIGHT OF 3". AFTER GRASS IS ESTABLISHED, IF PROJECT HAS NOT YET BEEN COMPLETED, LAWN SHALL BE MAINTAINED AT A MAXIMUM HEIGHT OF 2 1/2" UNTIL FINAL ACCEPTANCE OF THE CONTRACT AS PER SPECIFICATIONS.

1415 Washington Avenue Plant Key					
QUANTITY	SYMBOL	BOTANICALNAME	COMMONNAME	INSTALLSIZE	COMMENTS
10	AA	Amelanchier X 'Autumn Brilliance'	Autumn Brilliance Serviceberry	1.75-2" Cal.	MULTI-TRUNK FORM
4	AH	Amelanchier arborea 'Robin Hill'	Robin Hill Serviceberry	2.5-3" Cal.	SINGLE TRUNK TREE FORM
58	AH	Amsonia 'Hubrichtii'	Hubrichtii Blue Star	#1 Cont.	
28	AM	Alchemilla mollis	Lady's Mantle	#1 Cont.	
97	AN	Amsonia 'Blue Ice'	Blue Star	#1 Cont.	
63	AP	Allium afatanense 'Purple Sensation'	Purple Sensation Allium	Bulb	
6	BN	Betula nigra	River Birch	6-8' Heavy Clump	
1	BP	Betula papyrifera	Paper Birch	10-12' Clump	MULTI-STEM
36	CK	Calamagrostis x acutifolia 'Karl Foerster'	Karl Foerster Feather Reed Grass	#1 Cont.	
29	EC	Echinacea purpurea	Purple Coneflower	#1 Cont.	
16	EF	Eupatorium fistulosum	Joe Pye Weed	#1 Cont.	
5	GT	Gleditsia triacanthos inermis 'Shademaster'	Shademaster Thornless Honey Locust	2.5-3" Cal.	
29	HC	Hemerocallis 'Chicago Apache'	Chicago Apache Daylily	#1 Cont.	
19	HH	Hemerocallis 'Hyperion'	Hyperion Daylily	#1 Cont.	
1	LS	Liquidambar styraciflua 'Rotundiloba'	Sweetgum (Fruitless)	2 - 2.5" Cal.	Fruitless
7	MA	Malus 'Adirondack'	Adirondack Crabapple	2.5-3" Cal.	small red berries, disease and pest resistant
14	MP	Myrica pensylvanica	Northern Bayberry	#5 Cont.	
10	NR	Nepeta racemosa 'Walker's Low'	Walker's Low Catmint	#1 Cont.	
2	NS	Nyssa sylvatica	Blackgum	2-2.5" Cal.	
24	PA	Perovskia atriplicifolia	Russian Sage	#1 Cont.	
1	PB	Platanus x acerifolia 'Bloodgood'	Bloodgood London Plane Tree	3-3.5" Cal.	
8	PE	Populus tremula 'Erecta'	Columnar Swedish Aspen	10-12' B & B	
13	PH	Pennisetum alpecuroides 'Hamel'	Hamel Fountain Grass	#2 Cont.	
3	PR	Pinus rigida	Pitch Pine	2" Cal.	
1	QN	Quercus prinoides	Dwarf Chestnut Oak	2" Cal.	
1	SA	Sassafras albidum	Sassafras	2" Cal.	
10	SC	Salvia 'Caradonna'	Caradonna Sage	#1 Cont.	
16	SH	Stachys officinalis 'Hummelo'	Betony	#1 Cont.	
21	SO	Spiraea thunbergii 'Ogon'	Mellow Yellow Ogon Spirea	#3 Cont.	
6	SR	Syringa reticulata amurensis japonica	Japanese Tree Lilac	2.3-3" Cal.	
90	SS	Schizachyrium scoparium	Little Bluestem	#1 Cont.	
44	ST	Spiraea betulifolia 'Tor'	Birchleaf Spirea	#3 Cont.	
6	UP	Ulmus americana 'Princeton'	Princeton American Elm	2-2.5" Cal.	

1 Entry Area Planting Plan
L2 SCALE: 1' = 10'-0"

ENLARGED DETAIL

1/2" BLACK PLASTIC HOSE
NO.11 GA. GALV. WIRE, COIL EACH END TIGHTLY ALLOW FOR ADEQUATE TRUNK MOVEMENT

TRIM BRANCHES TO RETAIN NATURAL FORM OF TREE; DO NOT INJURE BRANCH COLLAR
WRAP TRUNKS OF THIN BARKED TREES WITH APPROVED TREE WRAP AT APPROPRIATE TIME OF YEAR FOR THE AREA
CROWN OF ROOT BALL SHALL BEAR SAME RELATIONSHIP TO FINISHED GRADE AS IT DID TO PREVIOUS GRADE
MULCH OVER ENTIRE PLANTING HOLE, KEEP AWAY FROM TRUNK MULCH RING TO EXTEND TO LIMIT OF CANOPY AT TIME OF INSTALLATION
PROVIDE (2) 3"-4" MIN. DIA. CEDAR STAKES 4' LONG OUTSIDE ROOT BALL WITH ONE ON SIDE OF PREVAILING WINDS (OPTIONAL)
CREATE RAISED SAUCER AROUND EDGE OF ROOT BALL
BACKFILL WITH NATIVE SOIL
FINISHED GRADE
CUT AND REMOVE TOP 1/3 OF BURLAP, TWINE AND WIRE BASKET FROM ROOT BALL
B&B ROOT BALL
EXISTING SUB-GRADE, TO AVOID SETTLING DO NOT EXCAVATE BENEATH ROOT BALL

STAKE TREES 18-24" ABOVE FINISH GRADE

NOTES:

1. DO NOT DAMAGE MAIN ROOTS OR DESTROY ROOT BALL WHEN INSTALLING TREE STAKE.
2. WATER THOROUGHLY AFTER INSTALLATION.
3. REMOVE TREE RINGS AND STAKES ONE YEARS AFTER INSTALLATION.
4. PROVIDE DRAINAGE FOR PLANTING PIT IF IN IMPERMEABLE SOIL.
5. ALL MULCH BEDS SHALL BE NO LESS THAN THE DIAMETER OF THE TREE CANOPY.

2 Tree Planting Detail
L2 SCALE: 3/8" = 1'-0"

CLEANLY PRUNE ONLY DAMAGED, DISEASED AND/OR WEAK BRANCHES
FINISHED GRADE AROUND PLANT TO BE THE SAME AS ORIGINAL GRADE OF PLANT
MULCH OVER ENTIRE PLANTING HOLE
CREATE SAUCER AROUND ROOT BALL
BACKFILL WITH NATIVE SOIL
FINISHED GRADE
CAREFULLY REMOVE TOP 1/3 OF BURLAP OR CONTAINER (IF CONTAINER IS NON- ORGANIC REMOVE COMPLETELY)
CUT SEVERAL SLITS IN ORGANIC CONTAINER TO FACILITATE ROOT PENETRATION
EXISTING SUB-GRADE, TO AVOID SETTLING DO NOT EXCAVATE DEEPER THAN ROOTS

NOTES:

1. WATER THOROUGHLY AFTER INSTALLATION.
2. FOR PLANTING BED INSTALLATION EXCAVATE ENTIRE SHRUB BED AS SHOWN ON PROJECT DRAWINGS.

3 Shrub Planting Detail
L2 SCALE: N.T.S.

FINISHED GRADE AROUND PLANT TO BE THE SAME AS ORIGINAL GRADE OF PLANT
MULCH OVER ENTIRE PLANTING HOLE
SPREAD MULCH EVENLY AROUND PLANTING BACKFILL WITH NATIVE SOIL
FINISHED GRADE
CAREFULLY REMOVE FROM CONTAINER EXISTING SUB-GRADE, TO AVOID SETTLING DO NOT EXCAVATE DEEPER THAN ROOTS

NOTES:

1. WATER THOROUGHLY AFTER INSTALLATION.
2. FOR PLANTING BED INSTALLATION EXCAVATE ENTIRE SHRUB BED AS SHOWN ON PROJECT DRAWINGS.

4 Groundcover Planting Detail
L2 SCALE: N.T.S.



LAndArt Studio
1118 Morningside Avenue
Schenectady, NY 12309
518.952.0531

Seal



Issues and Revisions

Project:
STUDENT HOUSING

1415 washington Avenue
Albany, New York

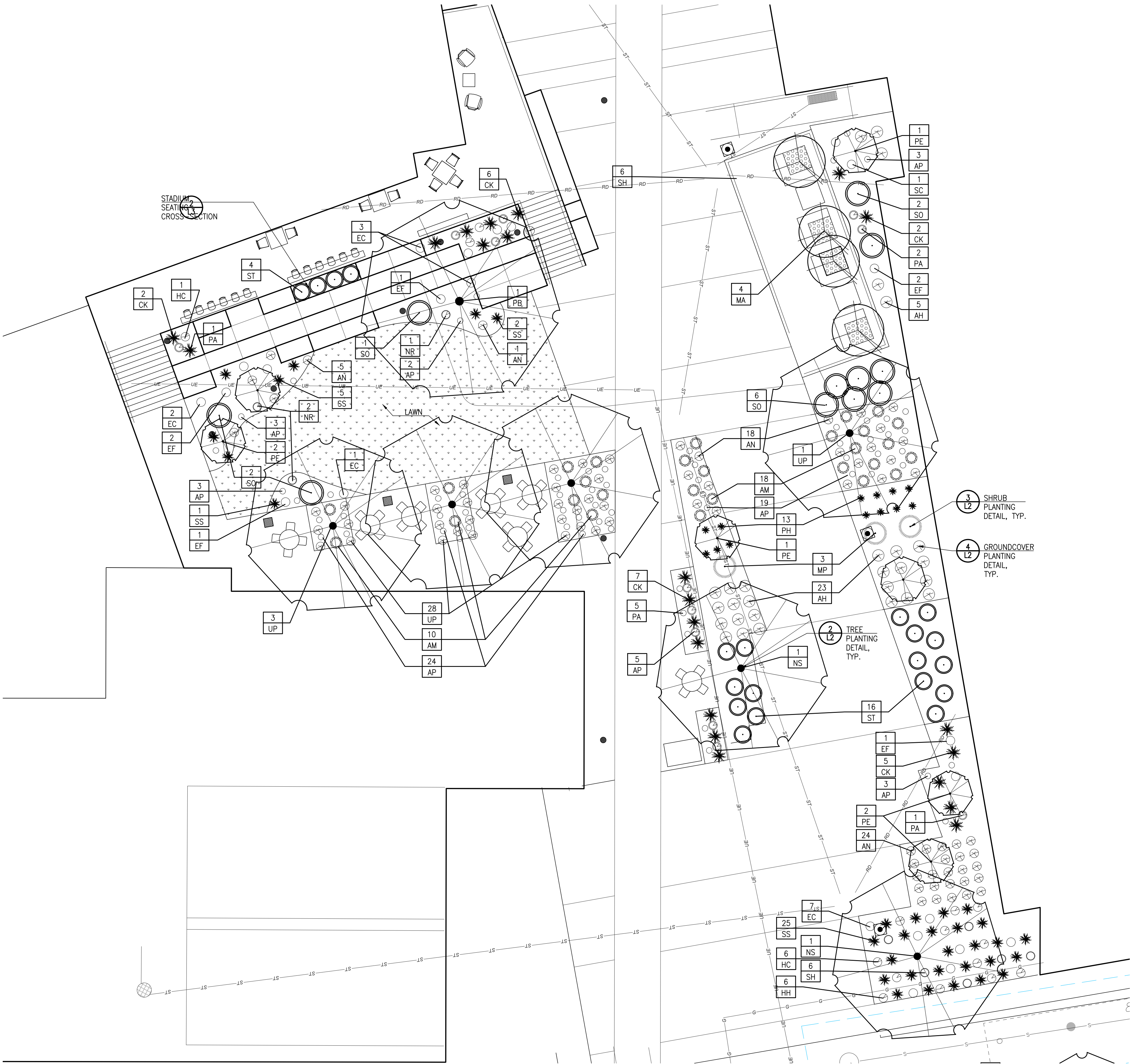
February 10, 2021

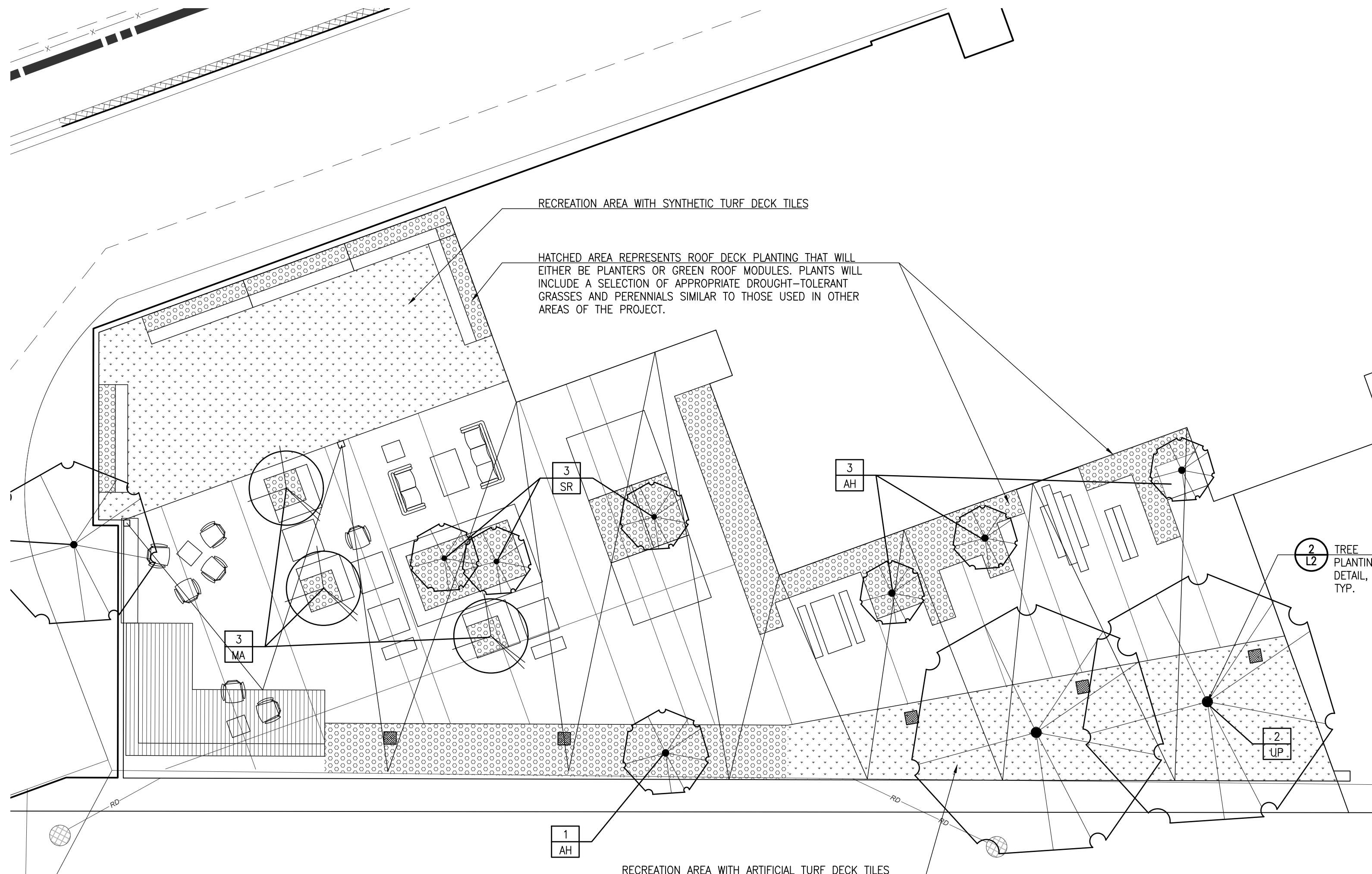
NOT FOR CONSTRUCTION

Date:

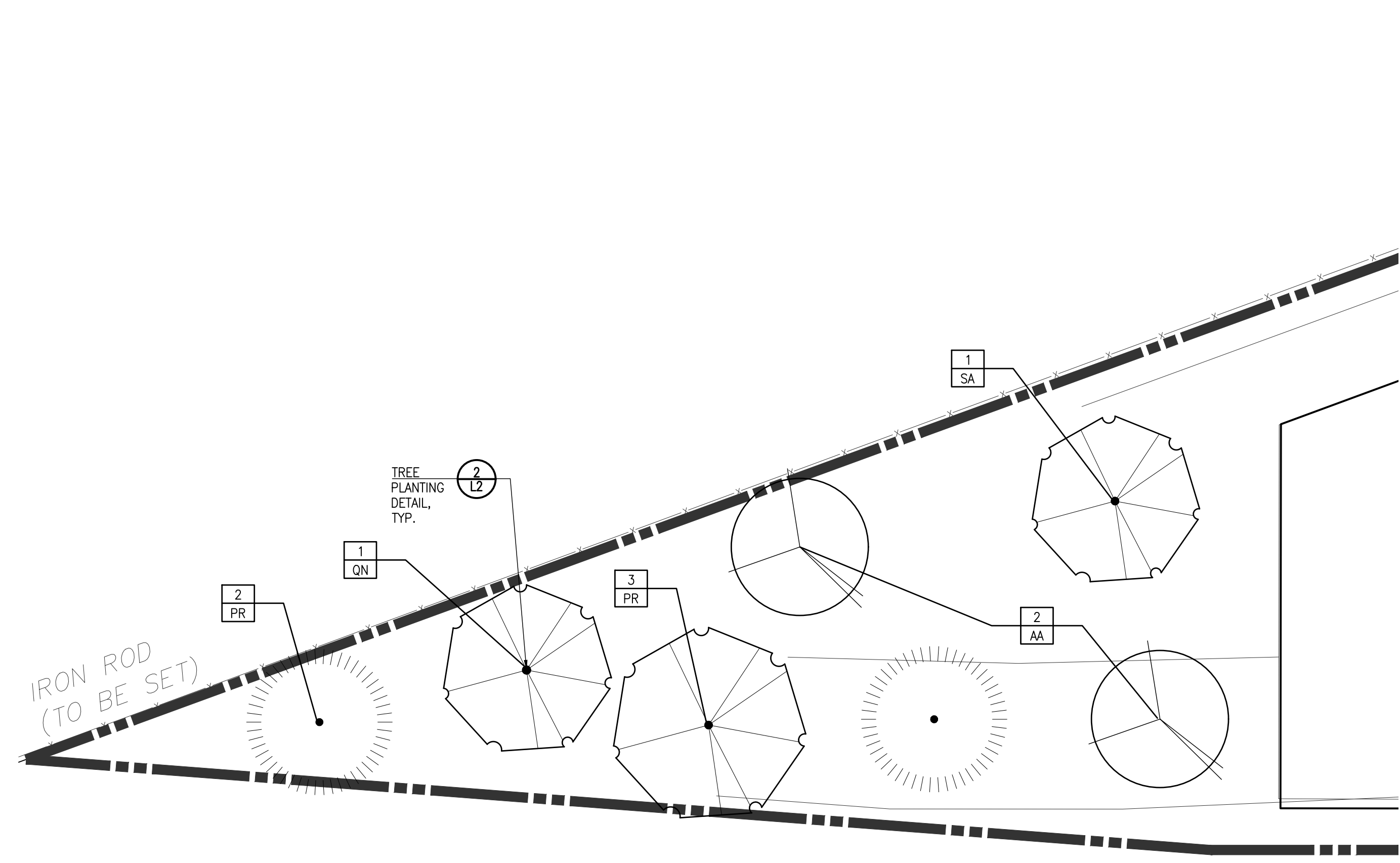
Sheet Title:
Planting Plan and Details

L2

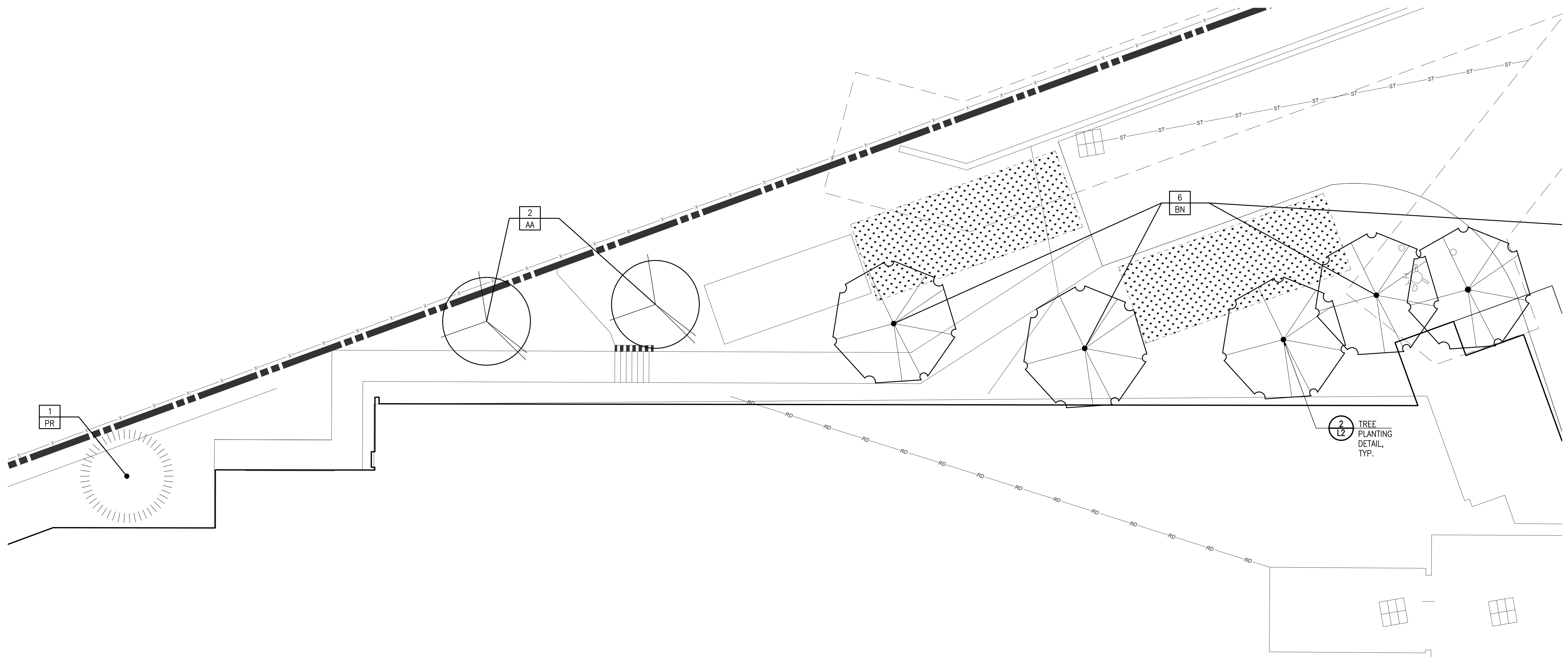




1 Backyard Roof Garden Planting Plan
L4 SCALE: 1" = 10'-0"



3 Western Corner Planting Plan
L4 SCALE: 1" = 10'-0"



2 Northwestern Edge Planting Plan
L4 SCALE: 1" = 10'-0"

LEGEND

	PROPOSED DECIDUOUS TREE		AREAS TO BE PLANTED WITH SOD
	PROPOSED CONIFEROUS TREE		SYNTHETIC TURF DECK IN DECK RECREATION AREAS
	PROPOSED SHRUBS & PERENNIALS		GRASS AND PERENNIAL MIX FOR DECK PLANTERS AND GREEN ROOF MODULES
			LANDSCAPE EDGING

NOTES

1. SEE L101 FOR PLANTING NOTES.
2. THE PLANT KEY CAN BE FOUND ON SHEETS L400 AND L401. THE KEYS ARE THE SAME AND ARE SHOWN TWICE FOR CONVENIENCE. NOTE THAT THE QUANTITIES REQUIRED SHOULD BE AS SHOWN ON A SINGLE CHART AND SHOULD NOT BE DUPLICATED.



LAndArt Studio
1118 Morningside Avenue
Schenectady, NY 12309
518.952.0531

Seal



ARCHITECT OF RECORD



Scenic Investments
OWNER

Issues and Revisions

Project:
STUDENT HOUSING

1415 Washington Avenue
Albany, New York

February 10, 2021

NOT FOR CONSTRUCTION

Date:

Sheet Title:

Planting Plan and Details

L4