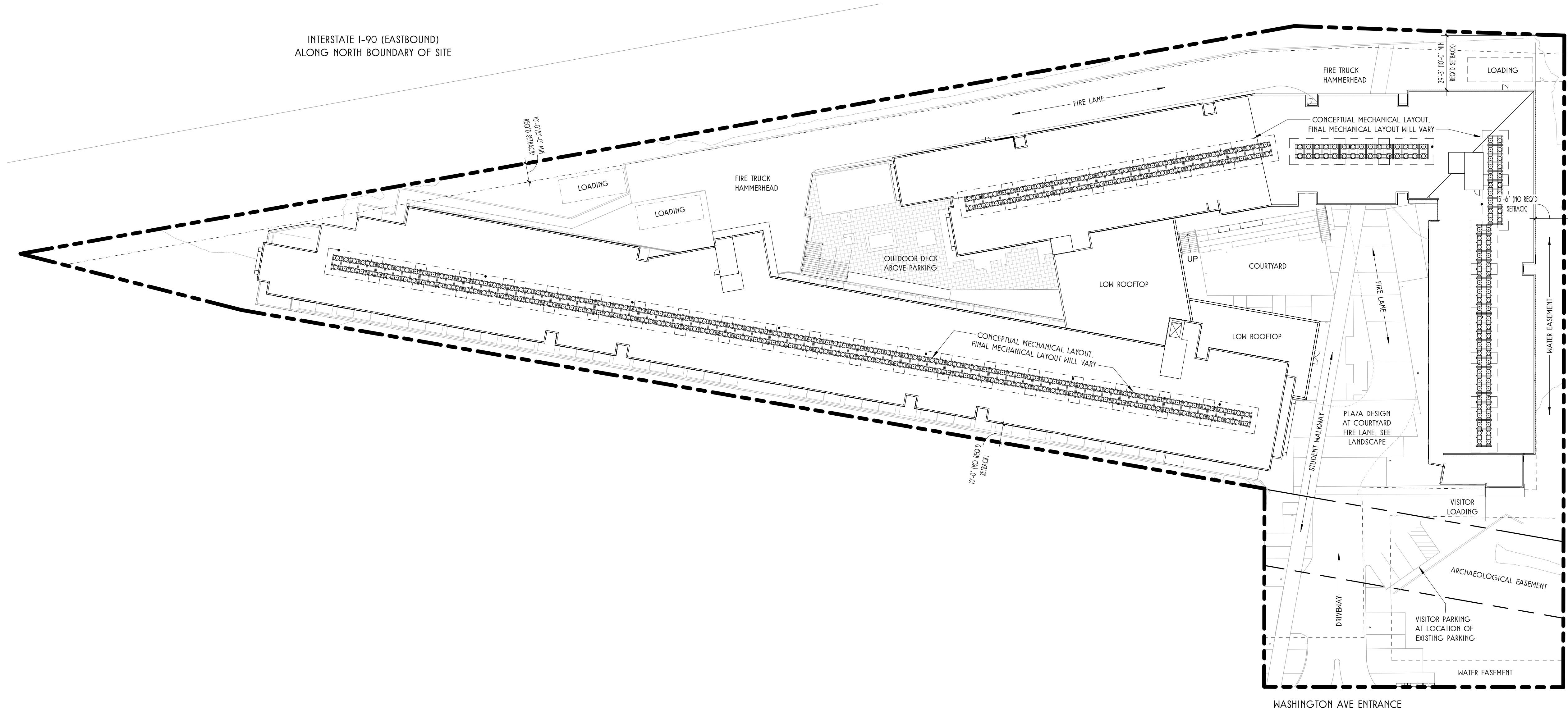


1 SITE PLAN
1 1/32" = 1'-0"



Student Housing 1415 Washington, Albany NY, 12207

2021.02.12

Revisions:		
Date	No.	Remarks

SITE PLAN

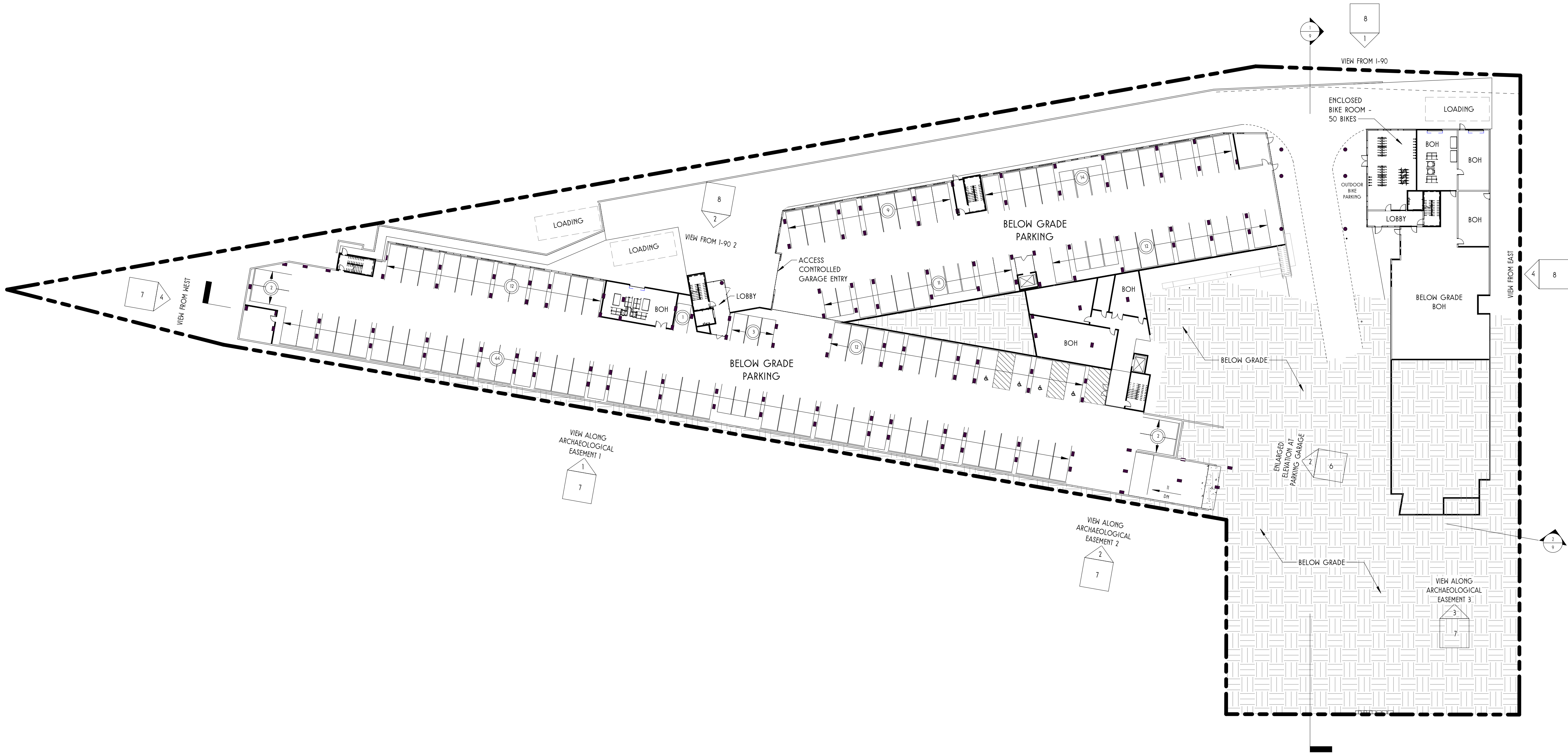
Student Housing
1415 Washington,
Albany NY, 12207

2021.02.12

Revisions:		
Date	No.	Remarks

BASEMENT LEVEL
PLAN

2



1 BASEMENT LEVEL PLAN
2 1/32" = 1'-0"



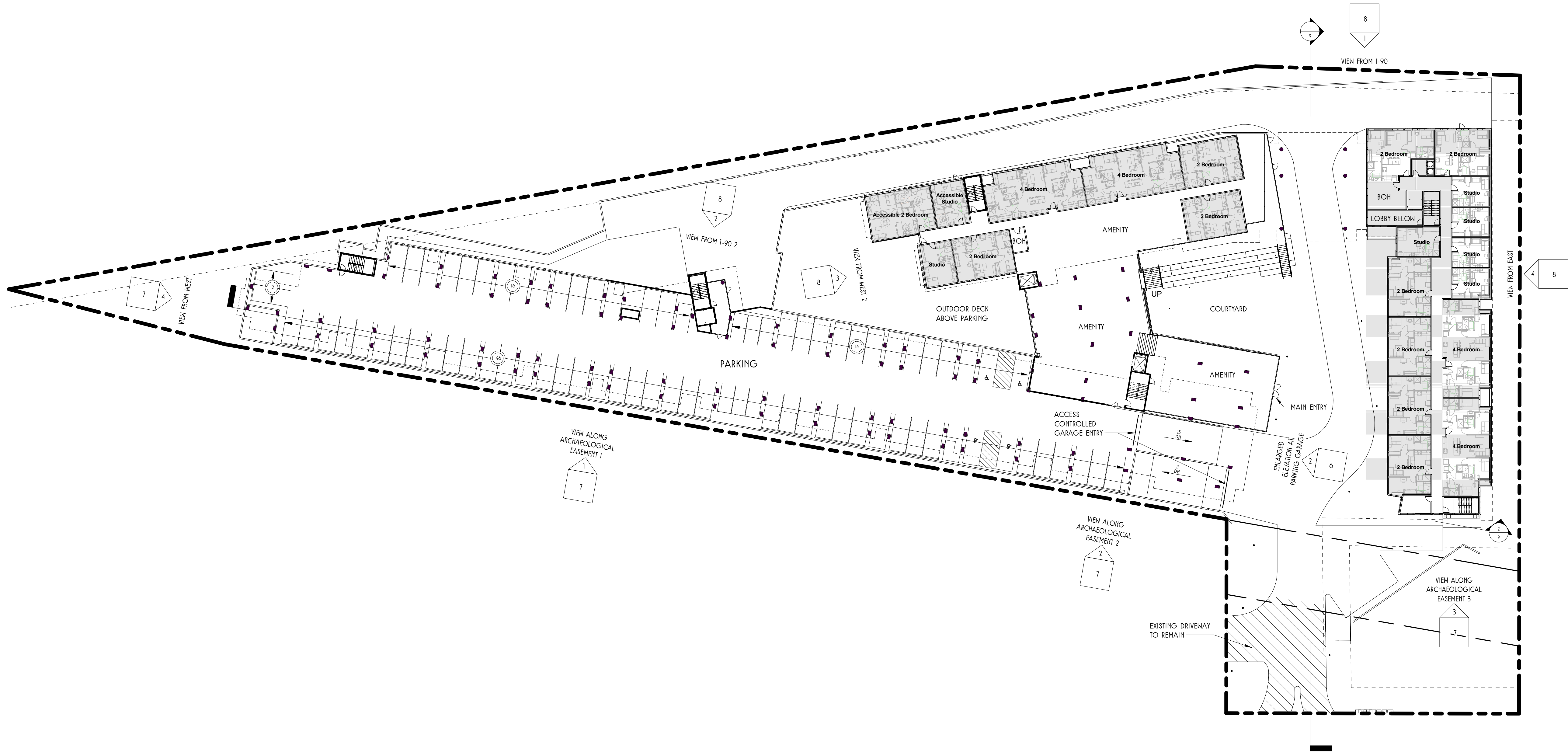
Student Housing
1415 Washington,
Albany NY, 12207

2021.02.12

Revisions:		
Date	No.	Remarks

GROUND LEVEL
PLAN

3



1
3 GROUND FLOOR PLAN
1/32" = 1'-0"



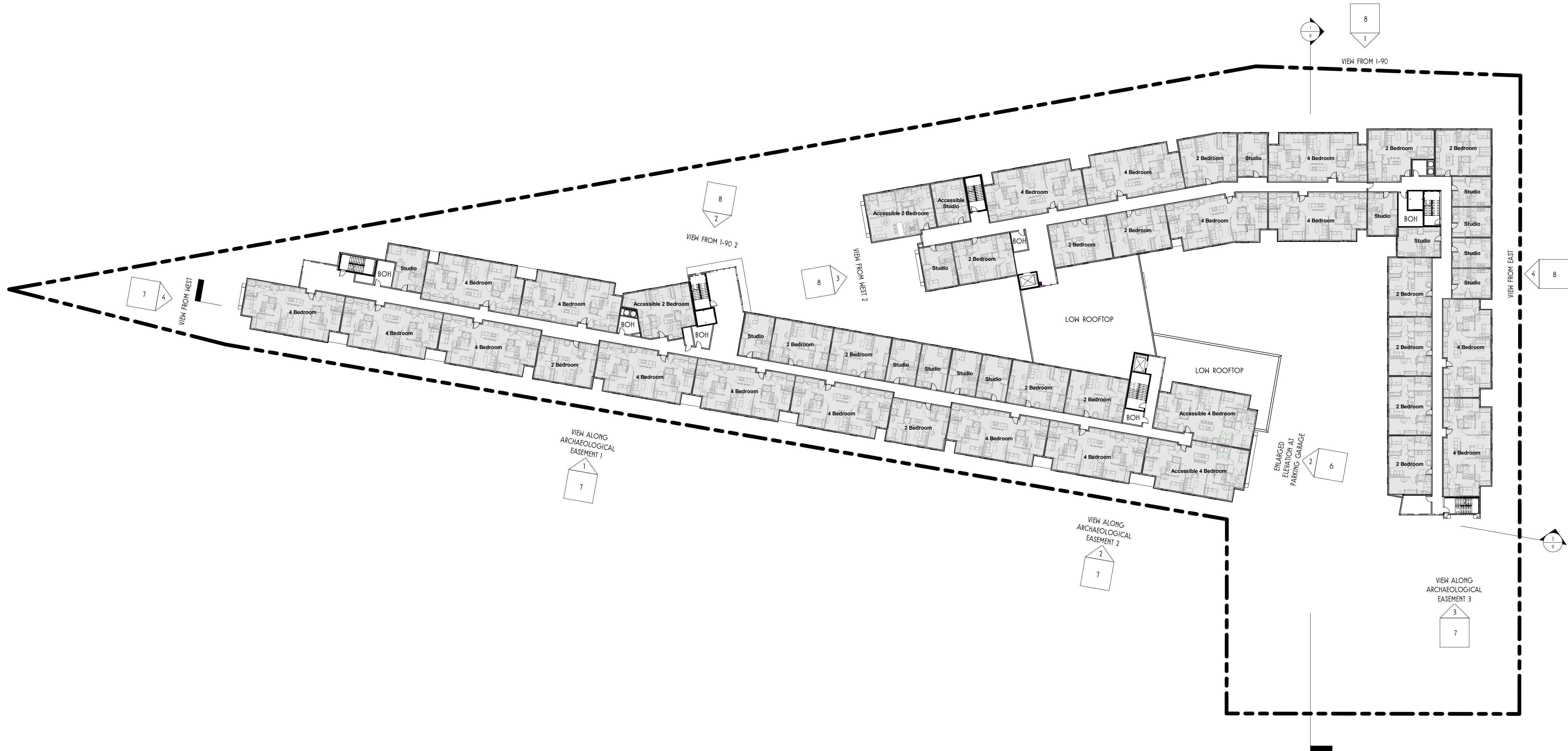
Student Housing
1415 Washington,
Albany NY, 12207

2021.02.12

Revisions:		
Date	No.	Remarks

TYPICAL PLAN
(LEVELS 2-5)

4



1
4
TYPICAL PLAN (LEVELS 2-5)
1/32" = 1'-0"



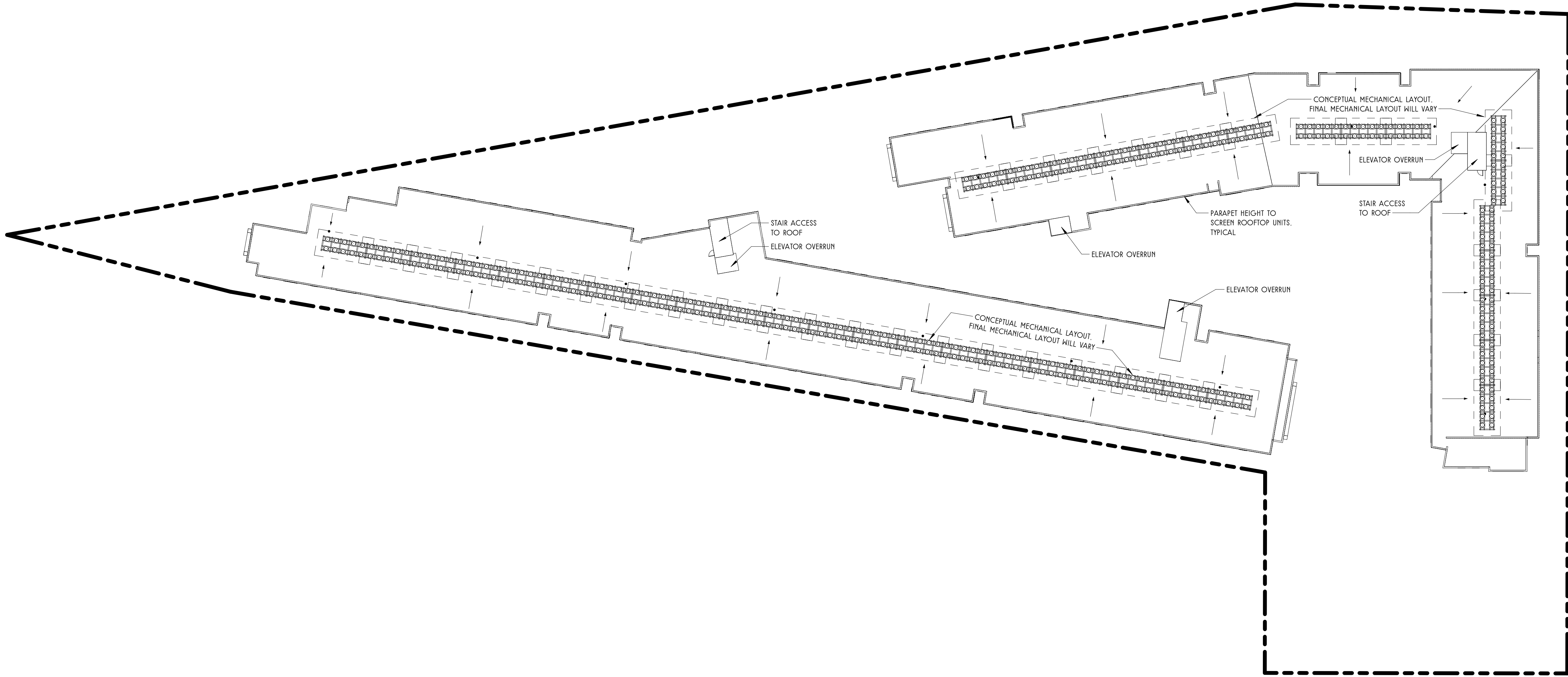
Student Housing
1415 Washington,
Albany NY, 12207

2021.02.12

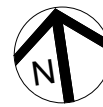
Revisions:
Date No. Remarks

ROOF PLAN

5



1 ROOF PLAN
5 1/32" = 1'-0"



MATERIALS

Colors are an approximation

MAT 1



FIBER CEMENT PANEL
Vertical board and batten

MAT 2



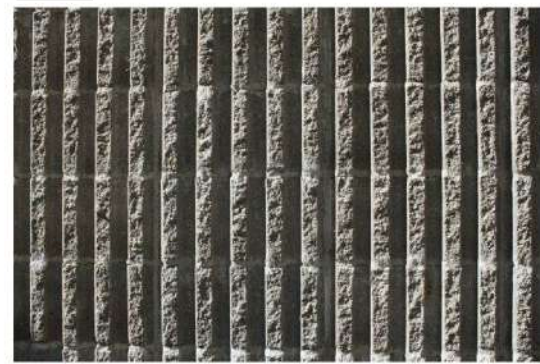
FIBER CEMENT PANEL
Horizontal boards

MAT 3



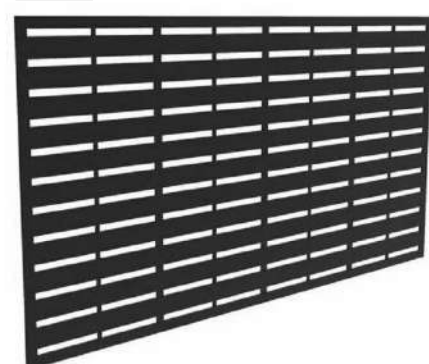
STOREFRONT GLAZING
Translucent panels
Spandrel panels

MAT 4



CONCRETE MASONRY BLOCK
Split rib (fluted)

MAT 5



DECORATIVE METAL SCREEN

MAT 6



EIFS

MAT 7



COMPOSITE WINDOW

MAT 8



SWISSPEARL FIBER CEMENT PANEL

PRECEDENT IMAGES

Representative images of materials used on example projects



MAT 3



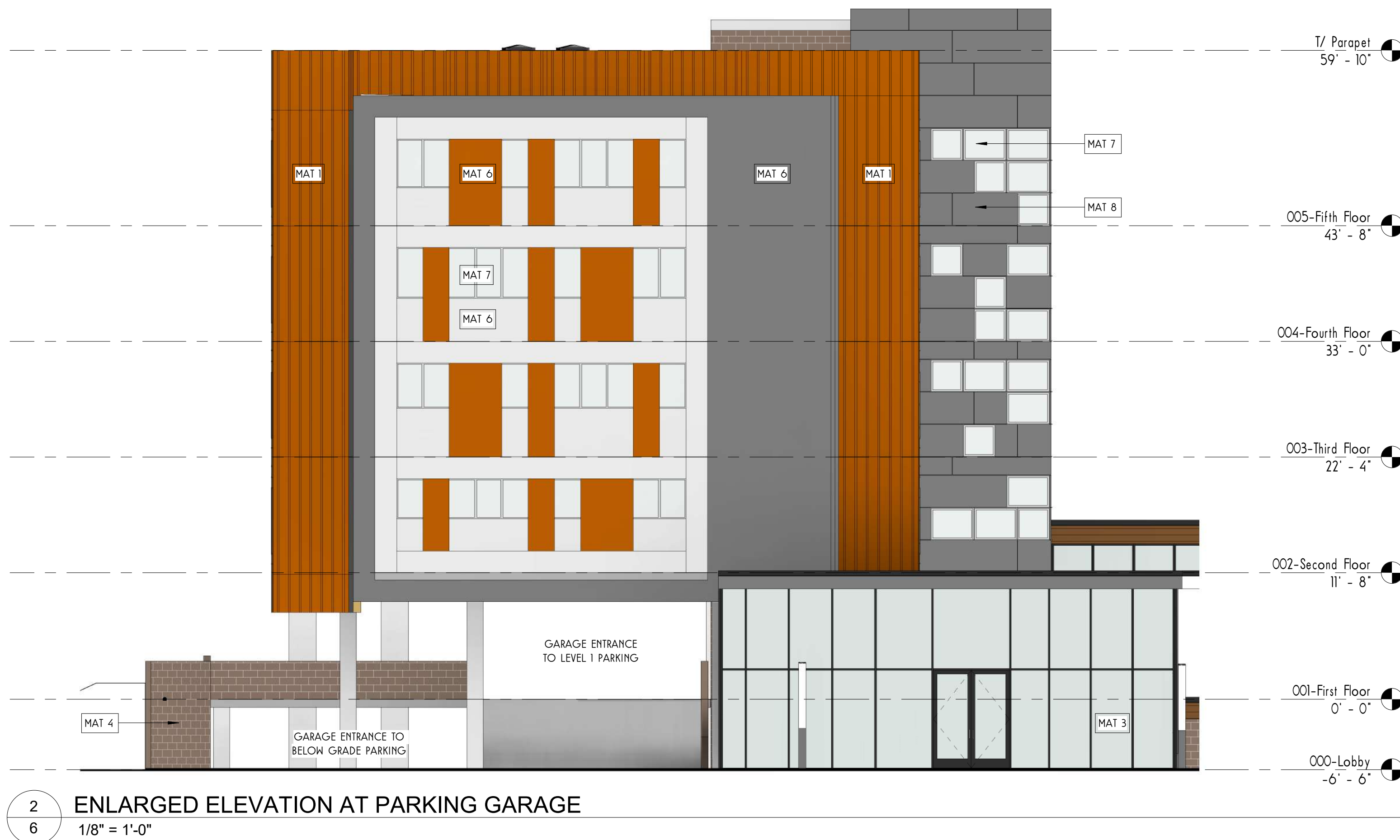
MAT 6



MAT 4



MAT 6



2
6

ENLARGED ELEVATION AT PARKING GARAGE
1/8" = 1'-0"



1
6

ENLARGED ELEVATION AT NORTH LOADING AREA
1/8" = 1'-0"

SA+R
SHEARS ADKINS ROCKMORE

1550 WYNKOOP ST. SUITE 100
DENVER CO, 80202
PHONE: 303.436.9551 FAX: 303.296.0946



Student Housing
1415 Washington,
Albany NY, 12207

2021.02.12

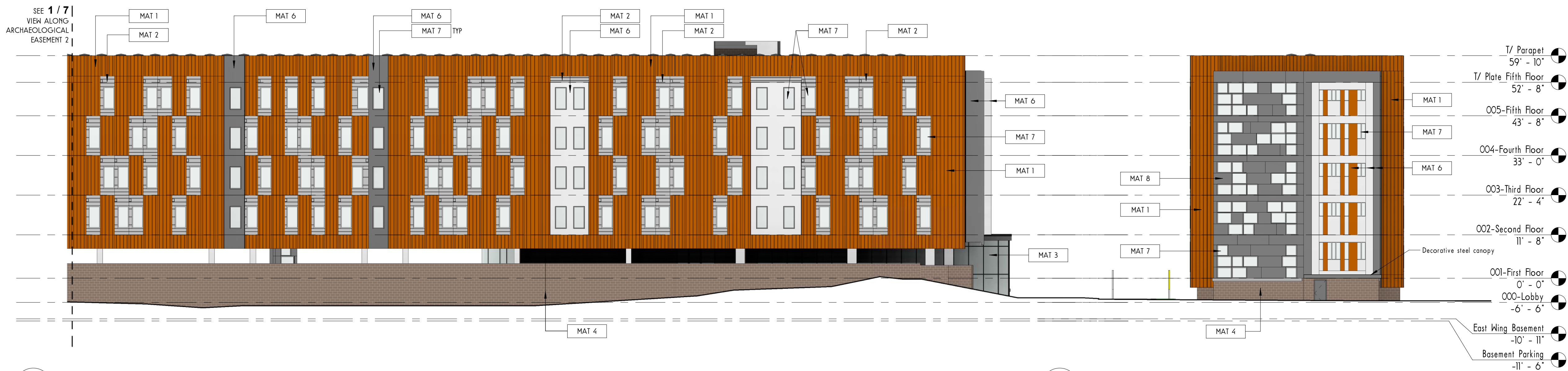
Revisions:
Date No. Remarks

EXTERIOR
MATERIALS

6



1
7
VIEW ALONG ARCHAEOLOGICAL EASEMENT 1
1/16" = 1'-0"

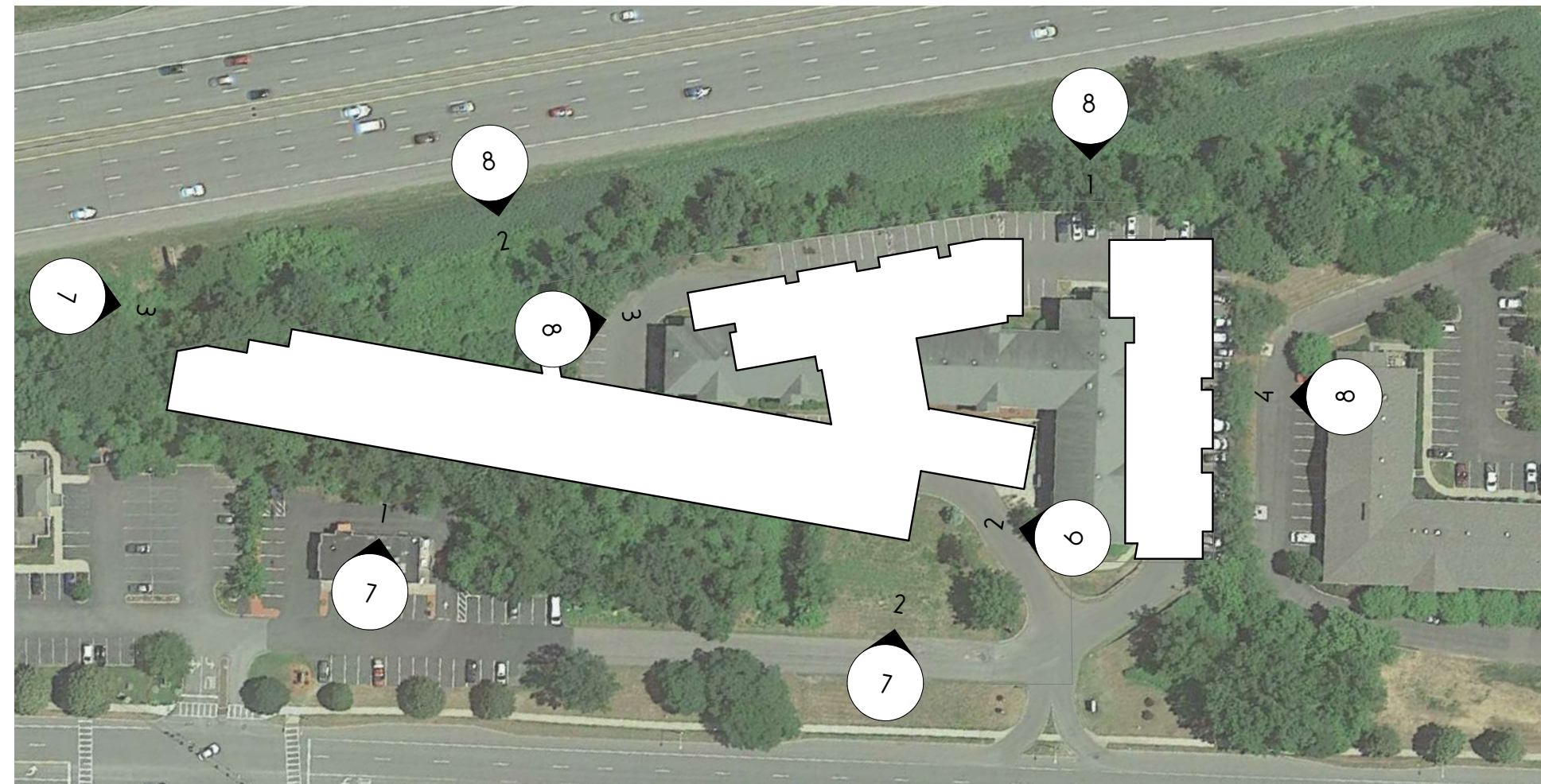


2
7
VIEW ALONG ARCHAEOLOGICAL EASEMENT 2
1/16" = 1'-0"

3
7
VIEW ALONG ARCHAEOLOGICAL EASEMENT 3
1/16" = 1'-0"



4
7
VIEW FROM WEST
1/16" = 1'-0"



Student Housing
1415 Washington,
Albany NY, 12207

2021.02.12

Revisions:		
Date	No.	Remarks

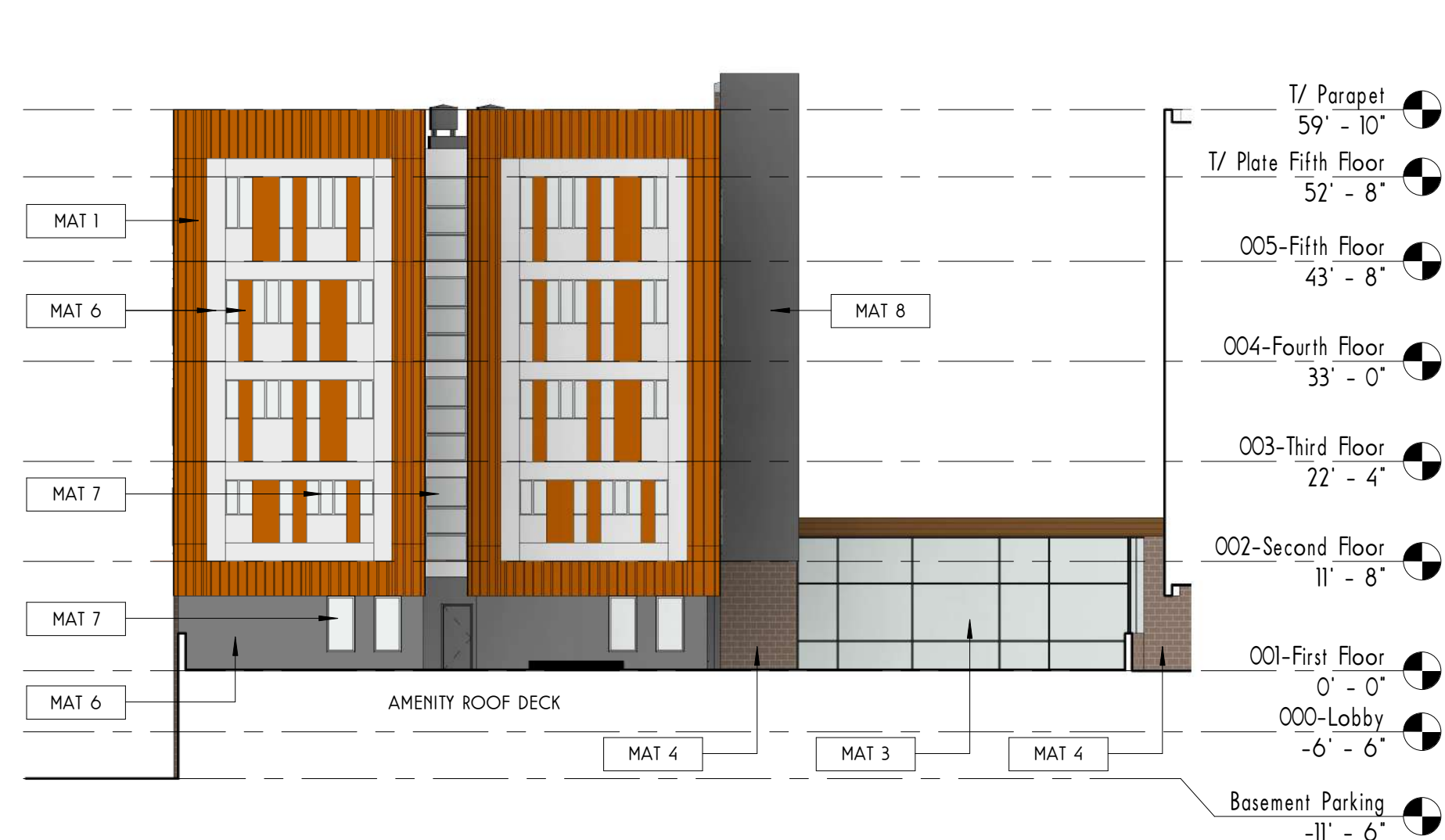
ELEVATIONS



1
8 VIEW FROM I-90
1/16" = 1'-0"



2
8 VIEW FROM I-90
1/16" = 1'-0"



3
8 VIEW FROM WEST
1/16" = 1'-0"



4
8 VIEW FROM EAST
1/16" = 1'-0"

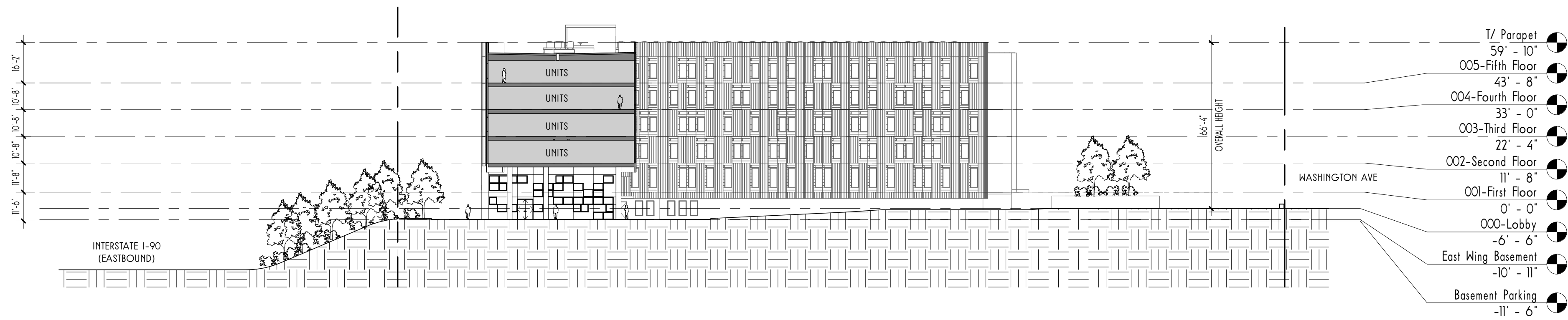
Student Housing

1415 Washington,
Albany NY, 12207

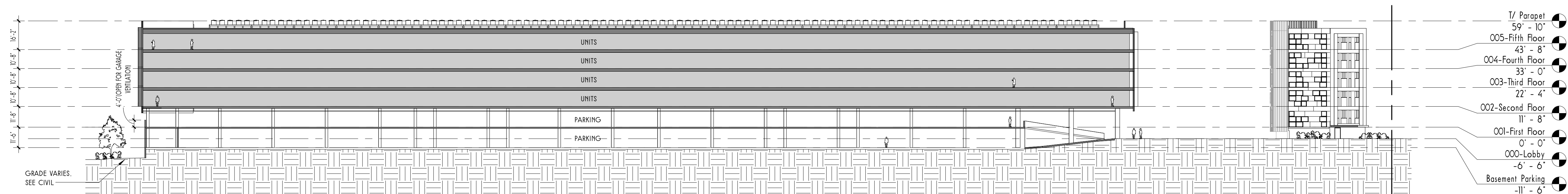
2021.02.12

Revisions:		
Date	No.	Remarks

ELEVATIONS



1 NORTH/SOUTH SECTION
1/32" = 1'-0"



2 WEST/EAST SECTION
1/32" = 1'-0"

Student Housing
1415 Washington,
Albany NY, 12207

2021.02.12

Revisions:		
Date	No.	Remarks

SECTIONS

Student Housing
1415 Washington,
Albany NY, 12207

2021.02.12

Revisions:
Date No. Remarks

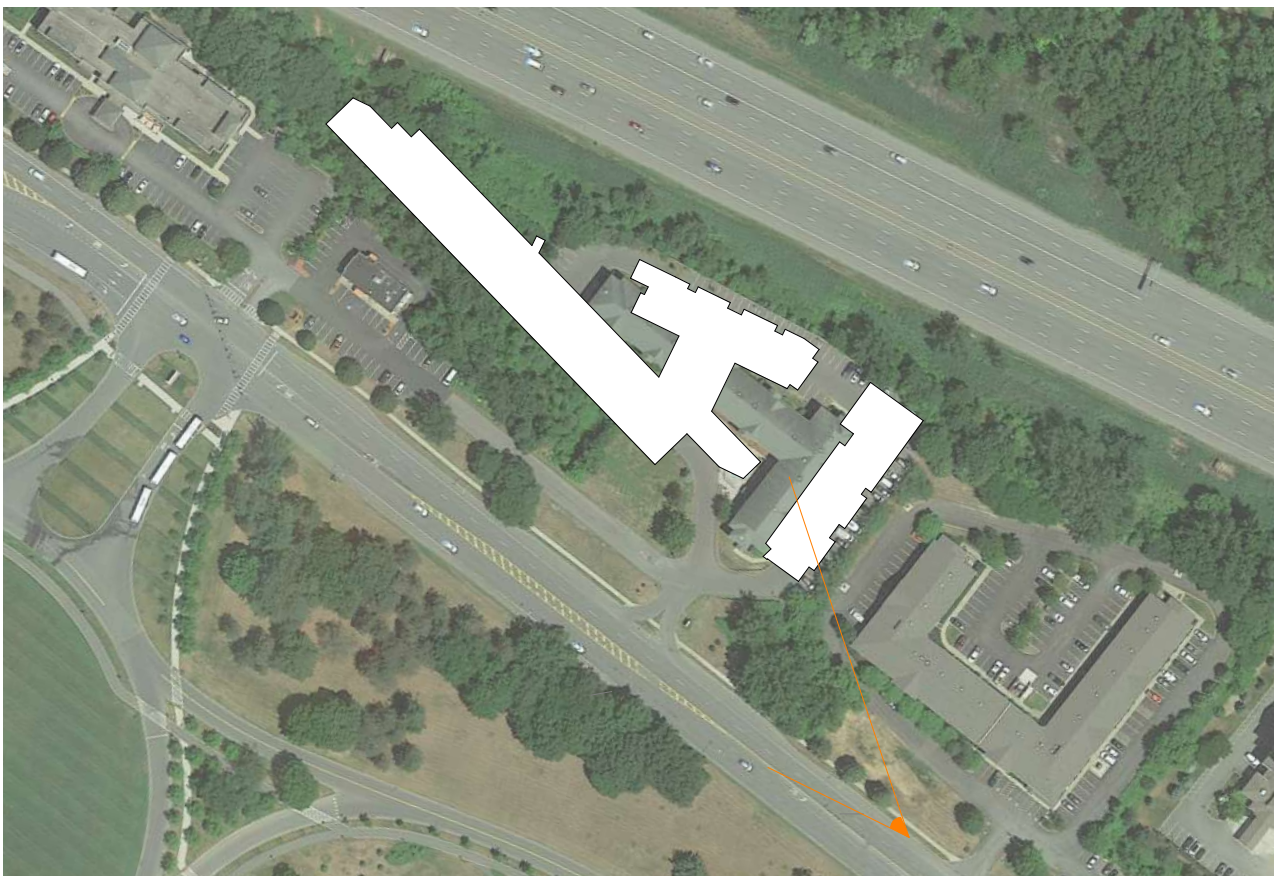
RENDERINGS



BEFORE - AERIAL VIEW



AFTER



VIEW KEY

Student Housing
1415 Washington,
Albany NY, 12207

2021.02.12

Revisions:
Date No. Remarks

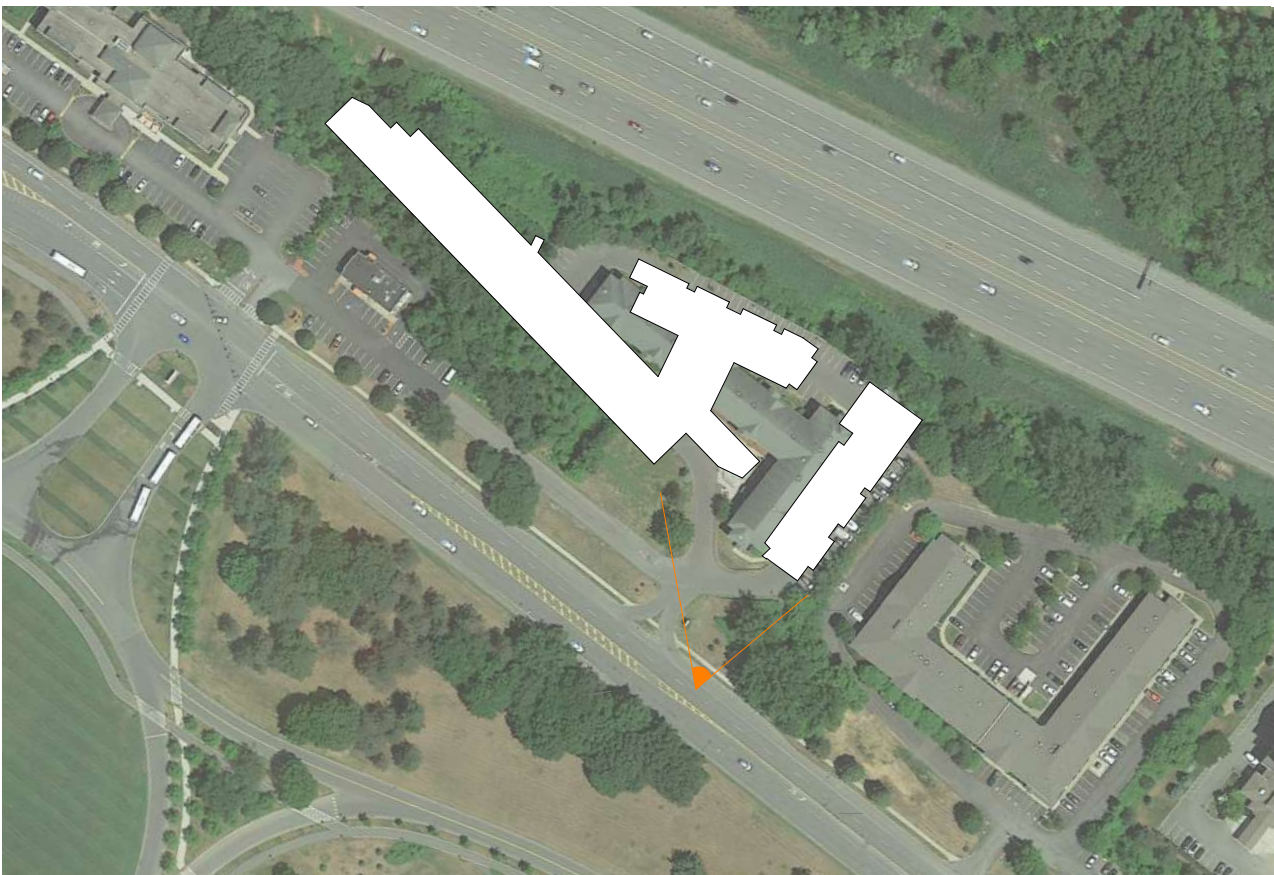
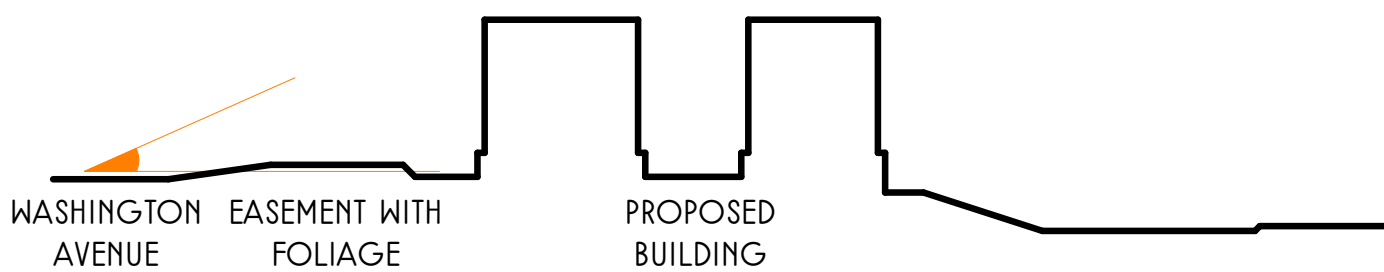
RENDERINGS



BEFORE VIEW FROM WASHINGTON AVENUE



AFTER



VIEW KEY

Student Housing
1415 Washington,
Albany NY, 12207

2021.02.12

Revisions:
Date No. Remarks

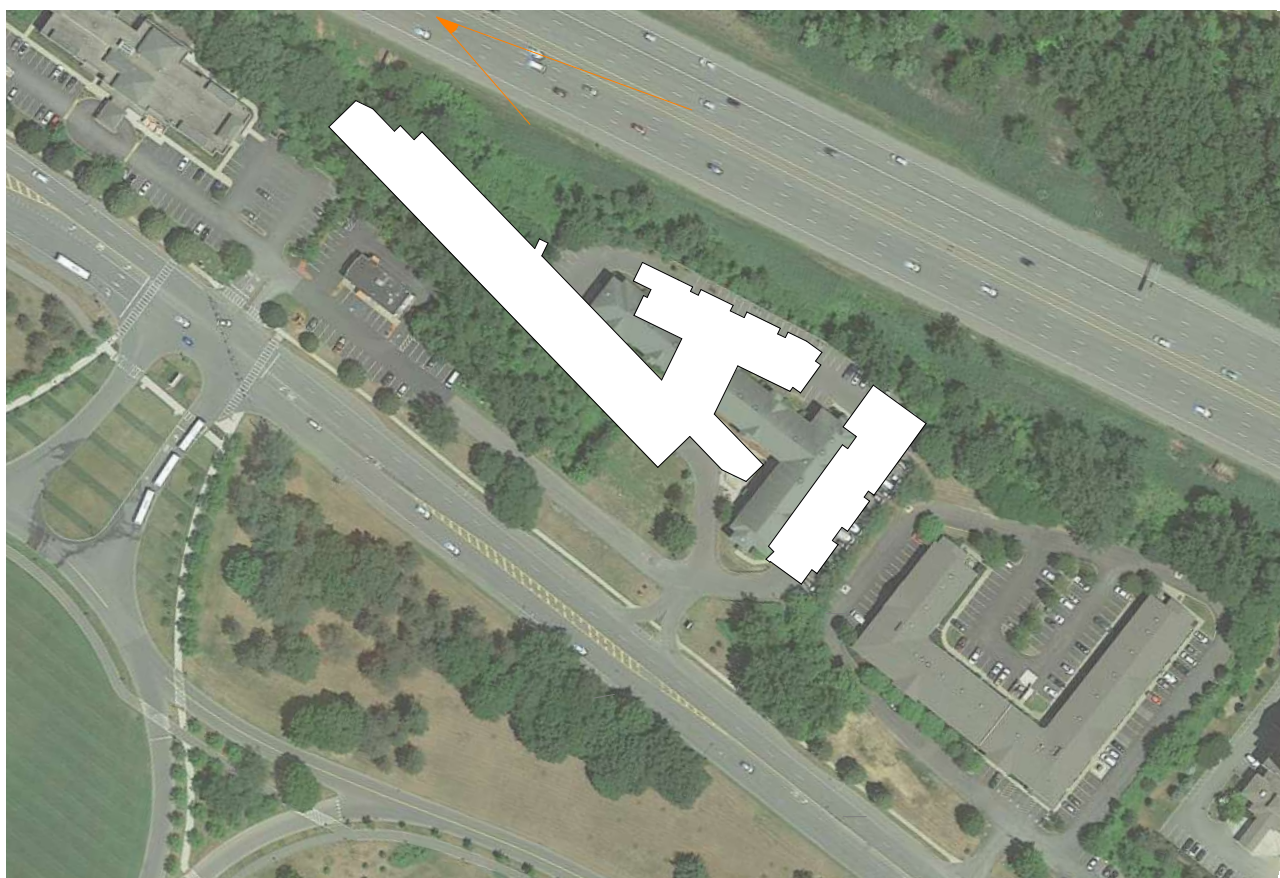
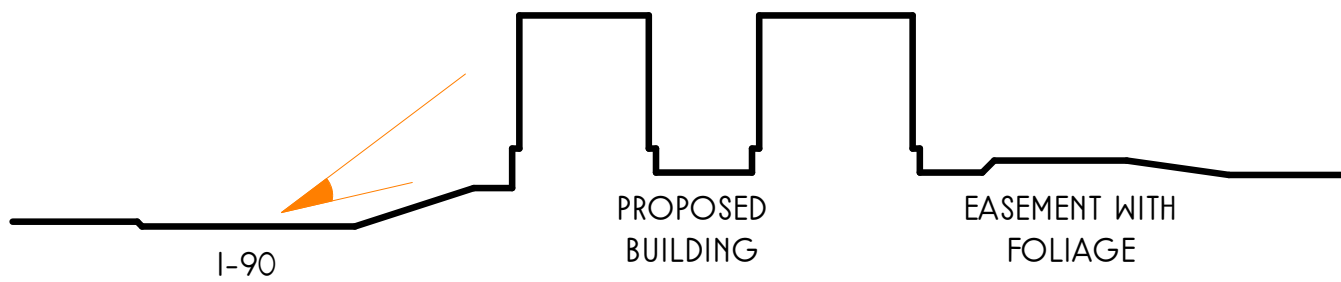
RENDERINGS



BEFORE VIEW FACING EAST ON I-90



AFTER



VIEW KEY

Student Housing
1415 Washington,
Albany NY, 12207

2021.02.12

Revisions:
Date No. Remarks

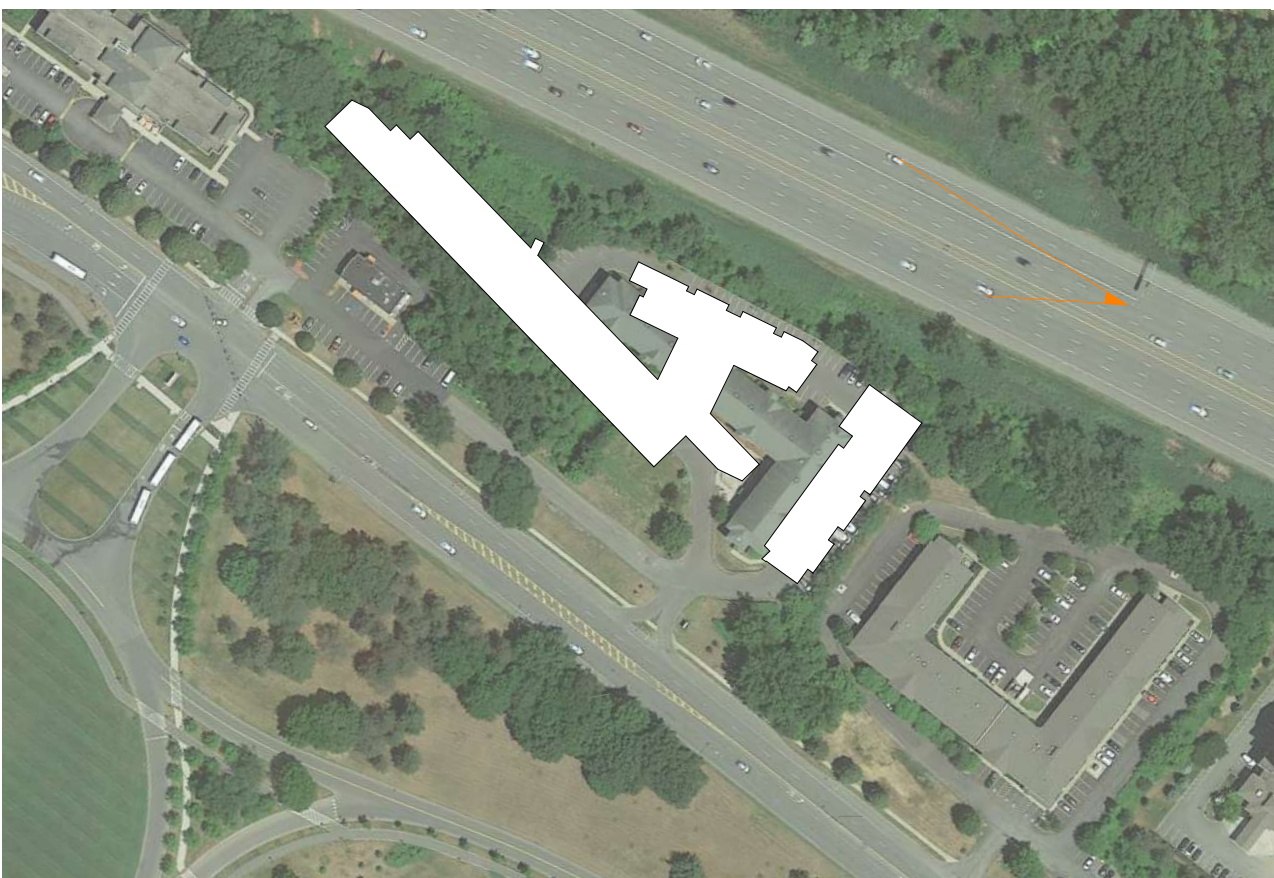
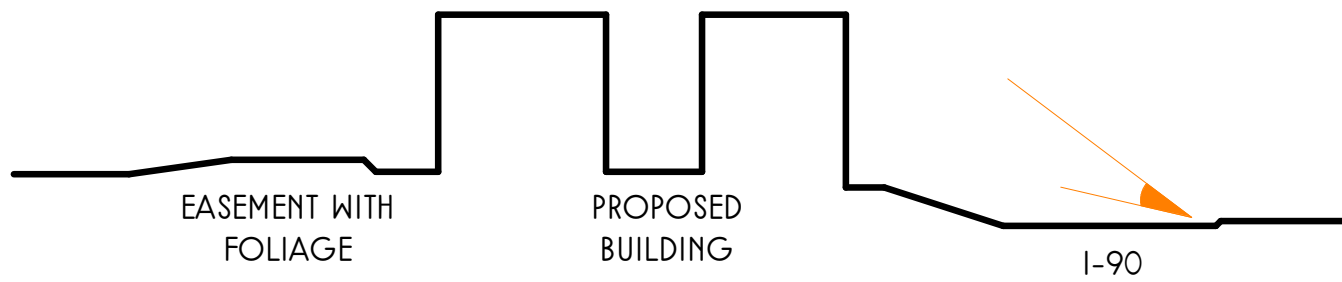
RENDERINGS



BEFORE VIEW FACING WEST ON I-90



AFTER



VIEW KEY

Student Housing
1415 Washington,
Albany NY, 12207

2021.02.12

Revisions:
Date No. Remarks

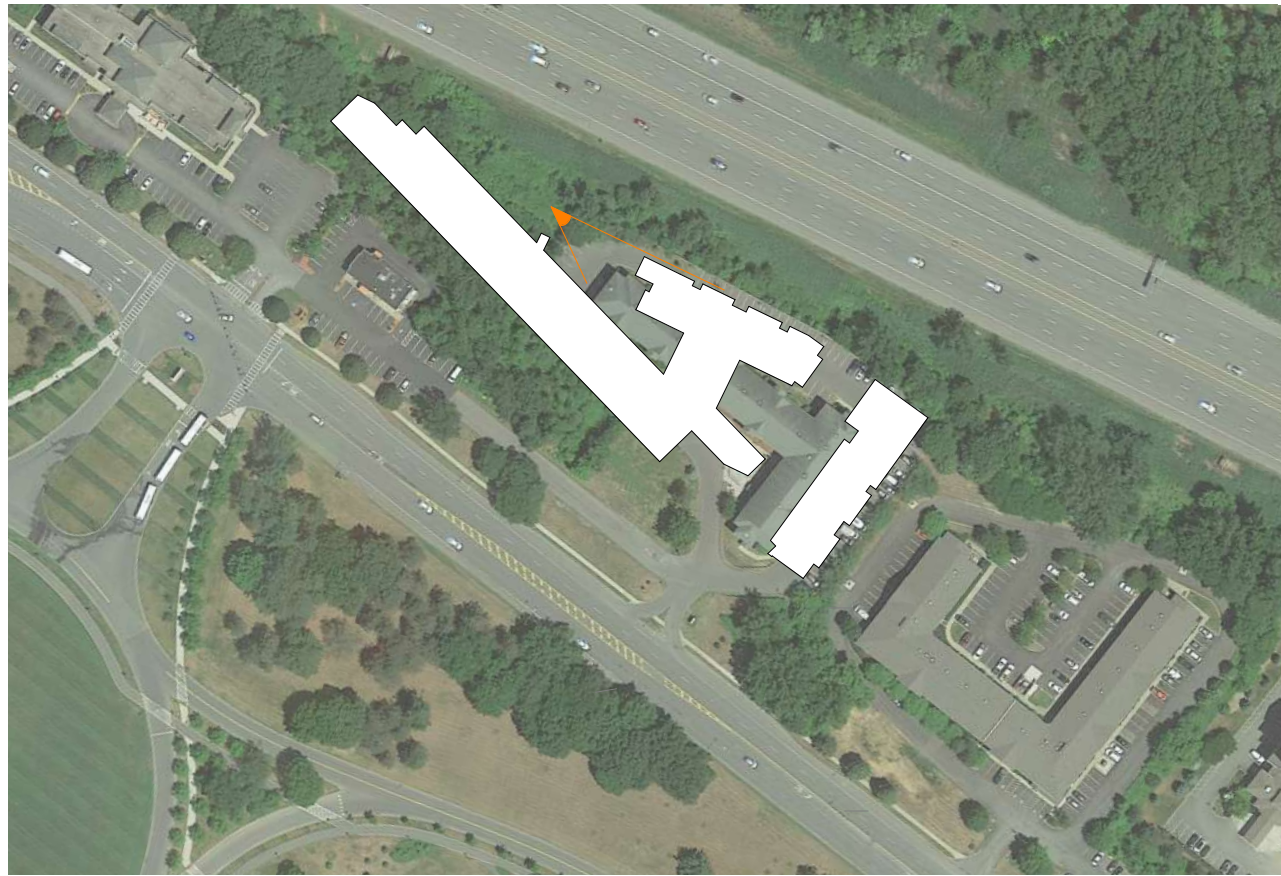
RENDERINGS



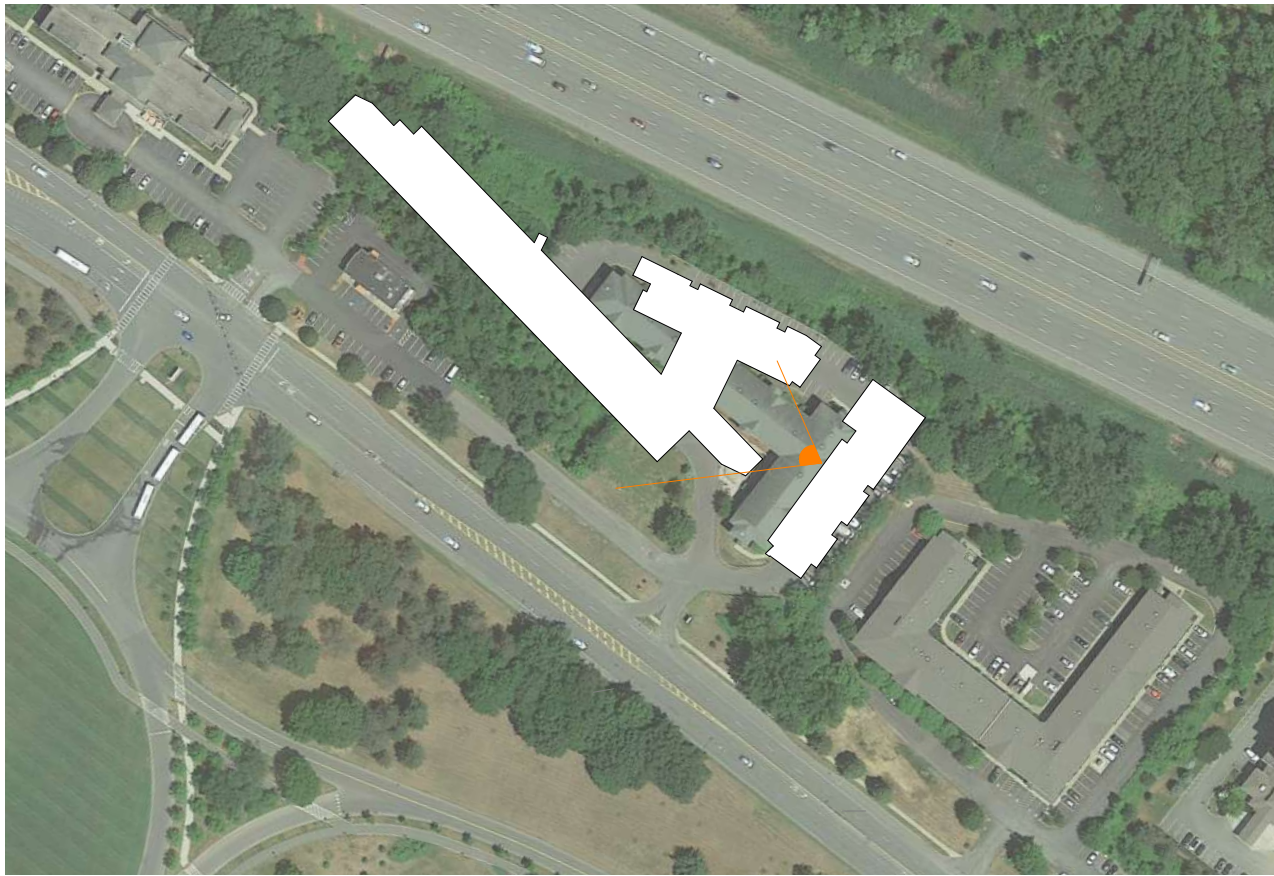
VIEW FACING EAST AT PLAZA



VIEW AT COURTYARD



VIEW KEY



VIEW KEY