

The WOMAN'S CLUB of ALBANY

LANDING #1 and RAMP #1:
WOOD TO MATCH PORCH FLOOR
DECKING. NEW PIPE RAILINGS, TYP.

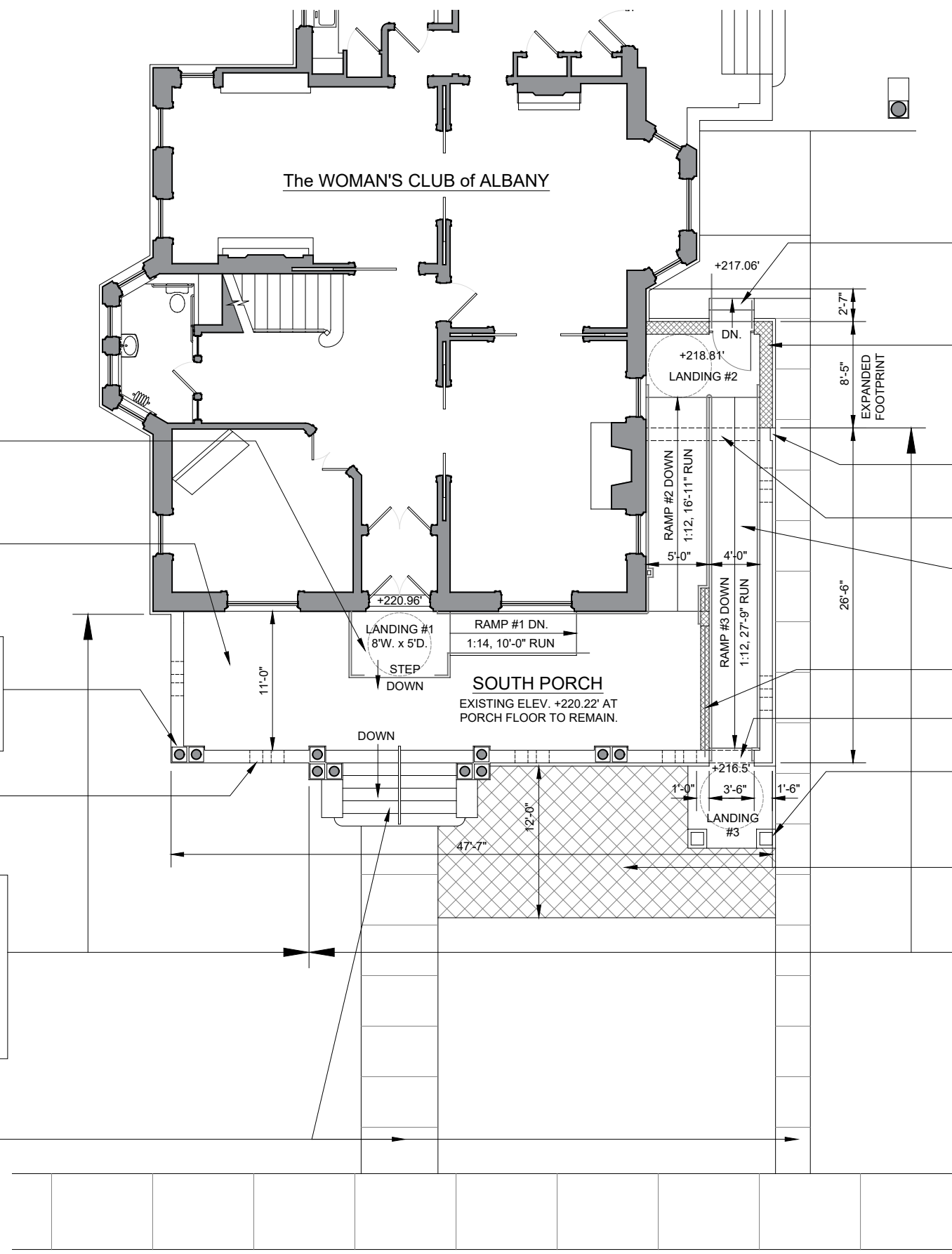
REBUILD PORCH FLOOR:
NEW T&G WOOD DECKING
(MAHOGANY, CLEAR FINISH)
on NEW P.T. WOOD FRAMING.

RESTORE and PAINT ALL SOUTH
PORCH COLUMNS and WOOD WORK
BELOW ROOF EDGE (EXCLUDES
PORCH CEILING).

INSTALL NEW WOOD FRAMES
and SCREENS AT ALL CRAWL
SPACE OPENINGS, TYPICAL.

RESTORE PORCH WEST WALL and
PORTION OF SOUTH WALL WEST OF
FRONT STONE STAIRS:
REPOINT and RESET BRICK AS
REQUIRED. REMOVE and RESET
STONE CAP OVER NEW COPPER
THRU-WALL FLASHING.

DISMANTLE and REBUILD FRONT
STONE STAIRS. RESTORE RAILING.
RESTORE STONE WALKWAYS.



ALTERNATE 'A':
STONE STAIR, 3 RISERS.

PORCH EXTENSION TO
MATCH EXISTING.

RECESS BRICK AT THIS LOCATION
TO DEMARK ORIGINAL PORCH
TERMINATION.

REMOVE PORCH NORTH WALL.

TINTED CONCRETE (TO MATCH COLOR OF
WOOD DECK) AT EXPOSED RAMP SECTIONS
and LANDINGS. INCLUDE ELECTRIC HEAT
TRACE BELOW CONCRETE.

NEW BRICK PORCH WALL, PIER and GUARD RAILS.

3'-6" WIDE NEW OPENING FOR RAMP ACCESS.

ALTERNATE 'B':
(2) PIERS: STONE BASE, 12"x12" BRICK,
STONE CAP MATCHING EXISTING, LED
LIGHT FIXTURE.

ALTERNATE 'C':
CONCRETE PAVING, 12' WIDE.

DISMANTLE and REBUILD PORCH EAST
WALL and PORTION OF SOUTH WALL, FROM
FOUNDATION UP. RESET STONE CAP OVER
NEW COPPER THRU-WALL FLASHING.

PARTIAL FIRST FLOOR PLAN
SOUTH PORCH FLOOR PLAN
SCALE 3/32"=1'-0"



ARCHITECT: **MARILYN KAPLAN**
PRESERVATION ARCHITECTURE
43 MARION AVENUE ALBANY, NY 12203 518.459.6460

PROPOSED SOUTH PORCH RESTORATION
and NEW ACCESSIBLE RAMP at
THE WOMAN'S CLUB OF ALBANY, INC.
725 MADISON AVENUE ALBANY, NY 12208

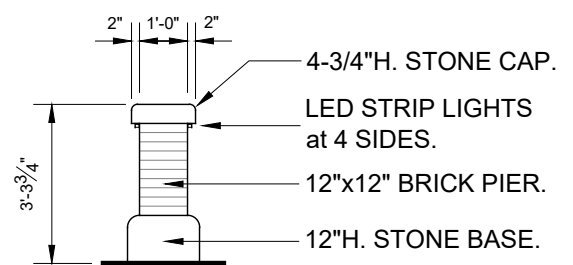
DATE 7/15/2020

SCALE 3/32"=1'-0"

DWG. No.

A1

DWG. 1 of 3



ALTERNATE 'B' - PIER with LIGHTS:
 STONE BASE, STONE CAP and BRICK
 TO MATCH EXISTING.
 SCALE 1/4"=1'-0"

SOUTH ELEVATION
 SCALE 3/32"=1'-0"



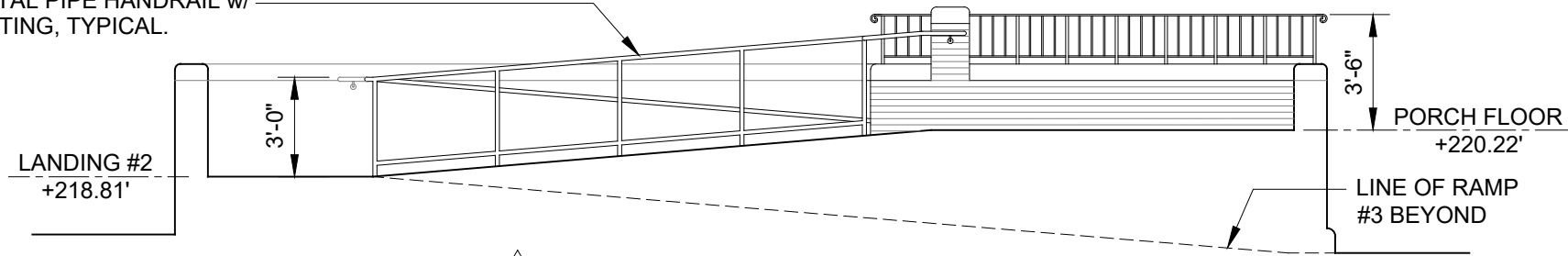
EAST ELEVATION
 SCALE 3/32"=1'-0"

ARCHITECT: **MARILYN KAPLAN**
PRESERVATION ARCHITECTURE
 43 MARION AVENUE ALBANY, NY 12203 518.459.6460

PROPOSED SOUTH PORCH RESTORATION
 and NEW ACCESSIBLE RAMP at
THE WOMAN'S CLUB OF ALBANY, INC.
 725 MADISON AVENUE ALBANY, NY 12208

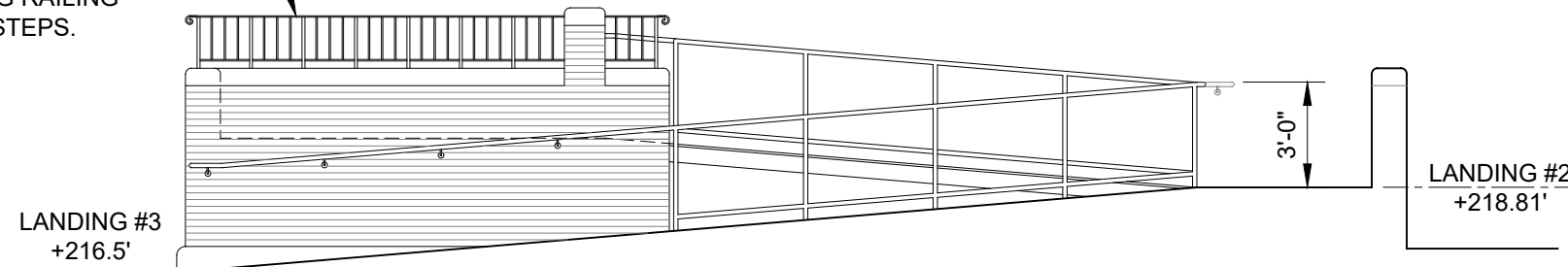
DATE 7/15/2020
 SCALE AS NOTED
 DWG. No. **A2**
 DWG. 2 of 3

1/4" DIA. METAL PIPE HANDRAIL w/
BLACK COATING, TYPICAL.



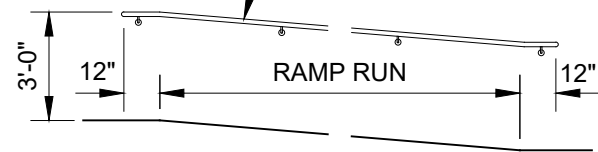
A RAMP #2 - LOOKING EAST
SCALE 3/16"=1'-0"

PAINTED BLACK
ORNAMENTAL STEEL
GUARD RAIL, 1/2"x3/8" TO
MATCH DIMENSIONS
OF EXISTING RAILING
AT FRONT STEPS.



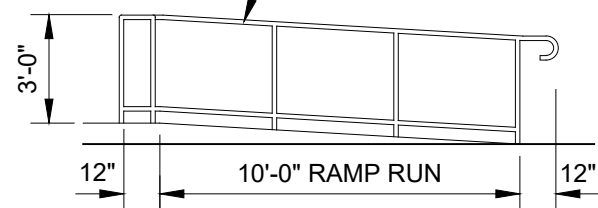
B RAMP #3 - LOOKING WEST
SCALE 3/16"=1'-0"

1/4" DIA. METAL PIPE WALL
MOUNTED HANDRAIL w/
BLACK COATING, w/
BRACKETS at 48"oc MAX.,
TYPICAL.

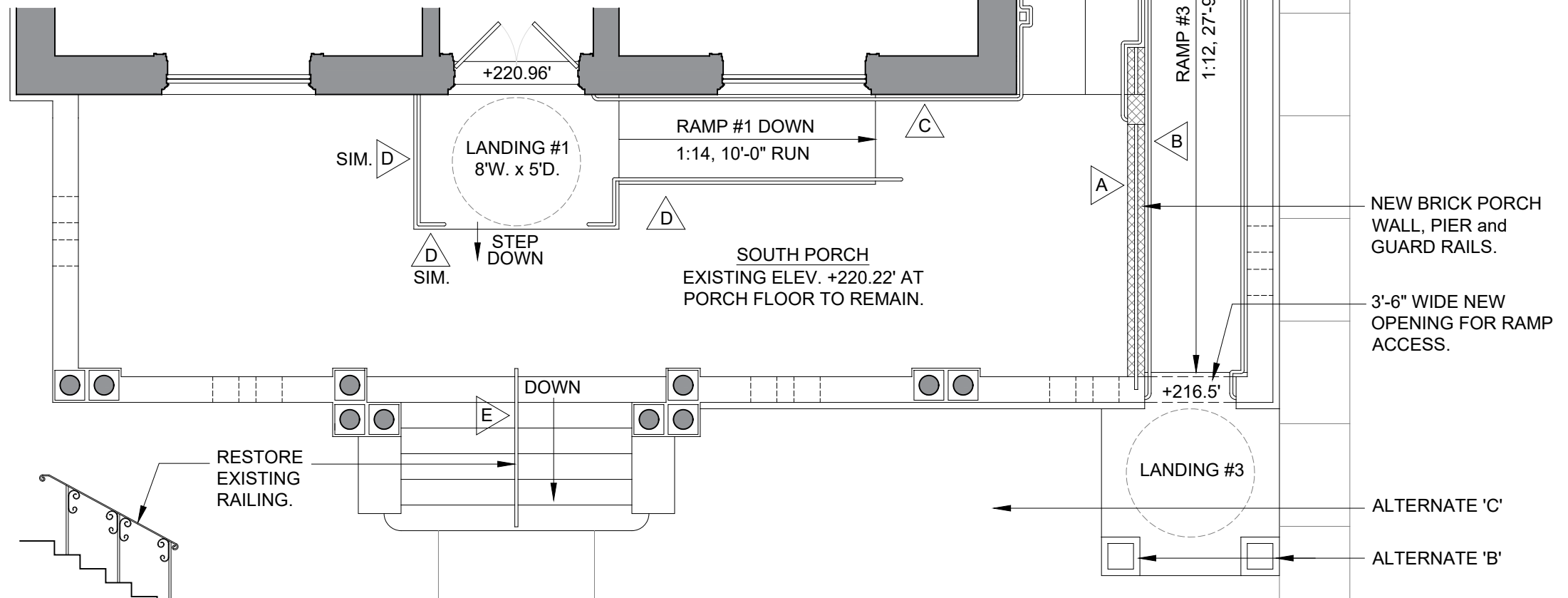


C TYP. HANDRAIL at WALL
SCALE 3/16"=1'-0"

1/4" DIA. METAL PIPE
HANDRAIL w/ BLACK
COATING, TYPICAL.



D RAMP #1 (SOUTH)
SCALE 3/16"=1'-0"



E EXISTING RAILING
SCALE 3/16"=1'-0"

SOUTH PORCH / RAMPS and RAILINGS PLAN
SCALE 3/16"=1'-0"



ALTERNATE 'A'

PORCH EXTENSION
TO MATCH EXISTING.

NEW BRICK PORCH
WALL, PIER and
GUARD RAILS.

3'-6" WIDE NEW
OPENING FOR RAMP
ACCESS.

ALTERNATE 'C'

ALTERNATE 'B'

ARCHITECT: **MARILYN KAPLAN**
PRESERVATION ARCHITECTURE

43 MARION AVENUE ALBANY, NY 12203 518.459.6460

PROPOSED SOUTH PORCH RESTORATION
and NEW ACCESSIBLE RAMP at
THE WOMAN'S CLUB OF ALBANY, INC.
725 MADISON AVENUE ALBANY, NY 12208

DATE 7/15/2020

SCALE AS NOTED

DWG. No.

A3

DWG. 3 of 3