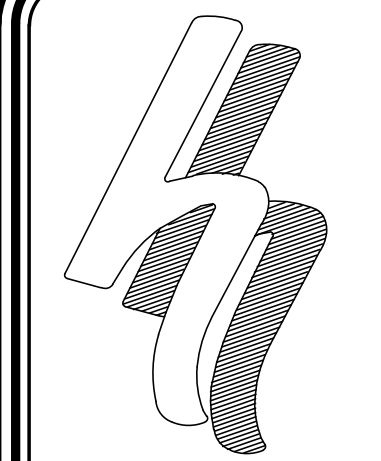
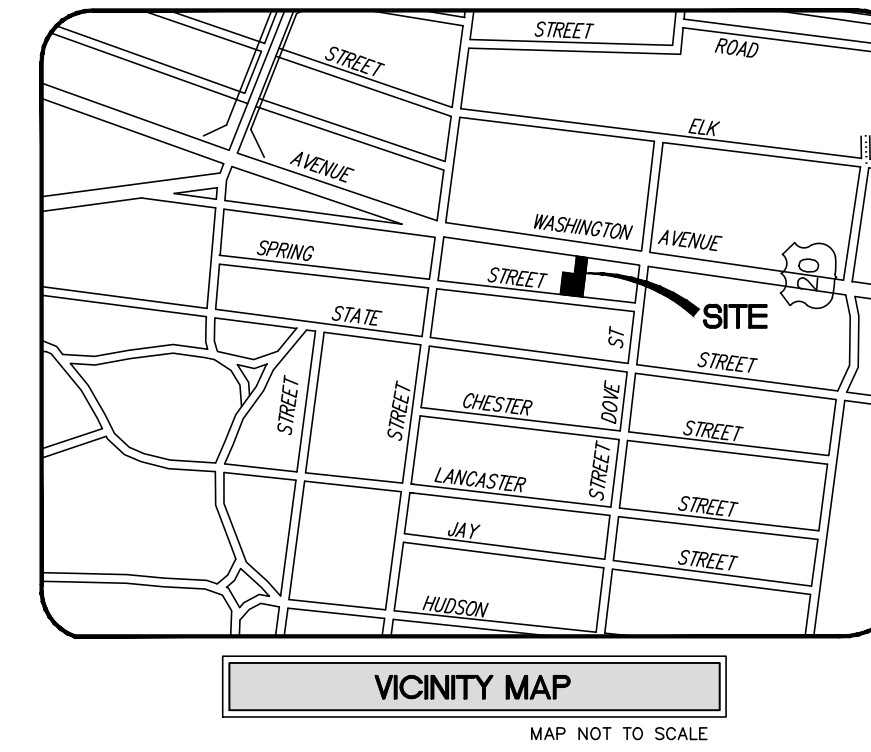
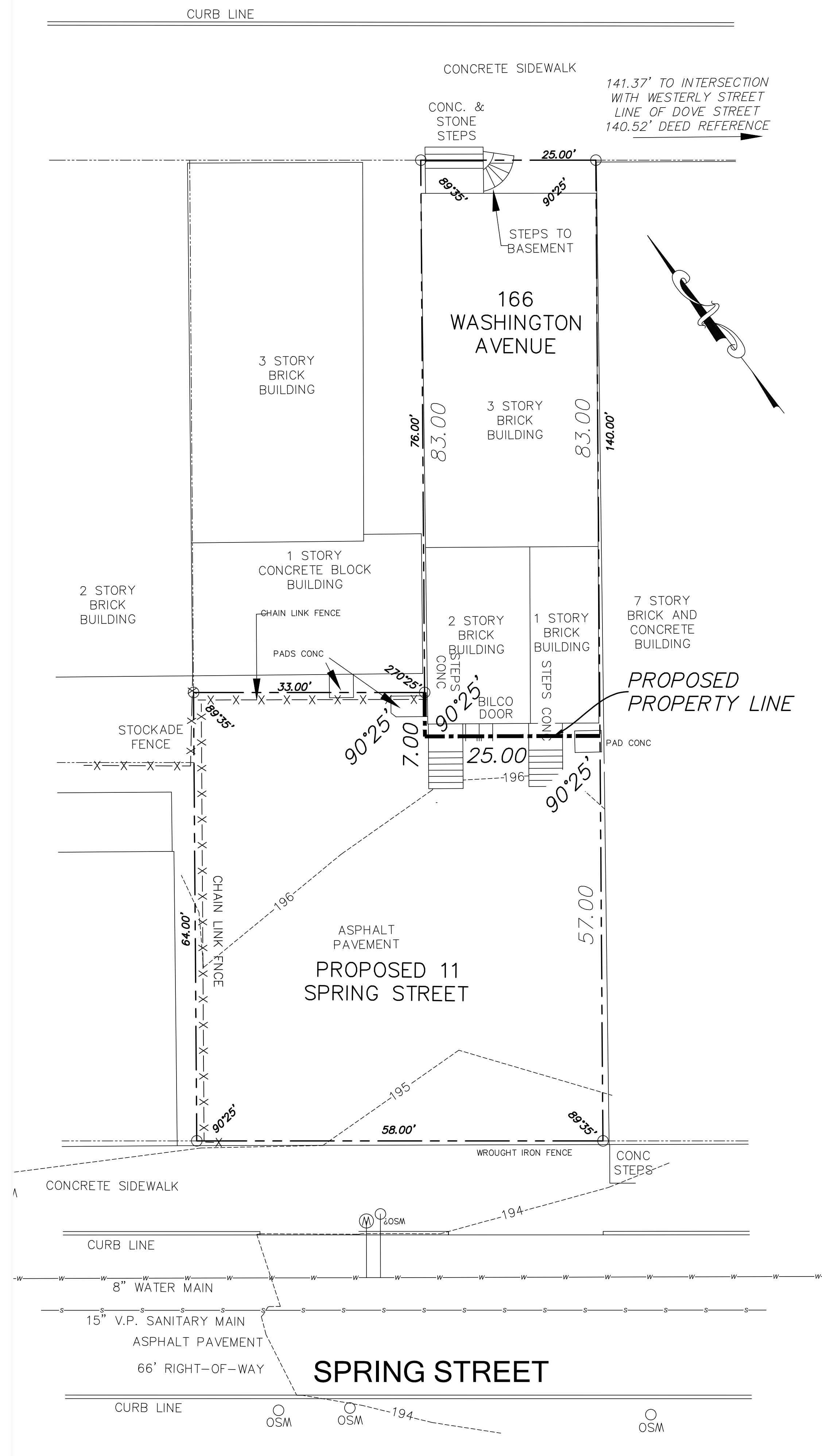
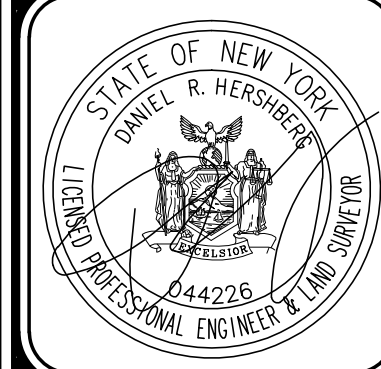


WASHINGTON AVENUE



HERSHBERG & HERSHBERG
 Consulting Engineers and Land Surveyors
 18 Locust Street
 Albany, New York 12203

ALTERATION OF THIS DOCUMENT EXCEPT BY A LICENSED PROFESSIONAL ENGINEER OR LAND SURVEYOR, IS ILLEGAL



DATE	REVISIONS

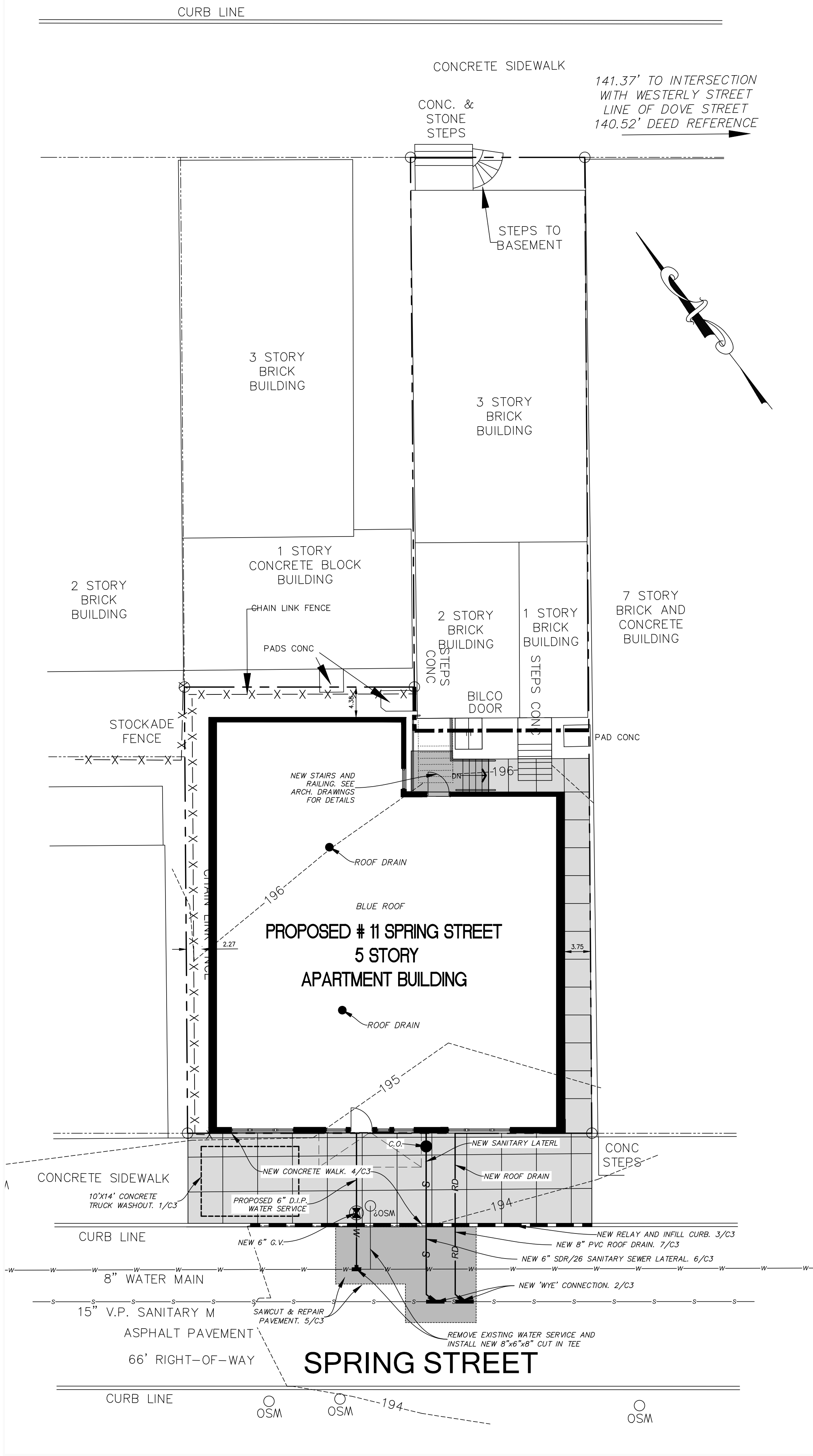
EXISTING CONDITIONS
 PROPOSED APARTMENTS
#11 SPRING STREET
 ALBANY, NEW YORK

FILE: 180218
 SCALE: 1"=10'
 DATE: 8/5/19
 CHK: DBH
 180218-1.DWG

FOR MUNICIPAL APPROVAL ONLY-NOT INTENDED FOR CONSTRUCTION

C1

WASHINGTON AVENUE



EXISTING SITE COVERAGE STATISTICS

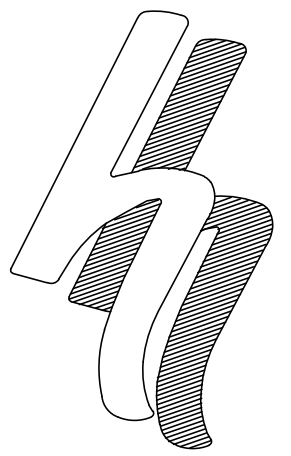
DESCRIPTION	S.F.	ACRES	%
GROSS SITE AREA	5,612	0.128	100.00%
IMPERVIOUS AREA	5,420	0.124	96.6
BUILDING COVERAGE	1,871	0.042	33.3
PAVEMENT/SIDEWALK COVERAGE	3,549	0.081	63.3
PERVIOUS AREA	192	0.004	3.4

PROPOSED SITE COVERAGE STATISTICS #166 WASHINGTON AVENUE

DESCRIPTION	S.F.	ACRES	%
GROSS SITE AREA	2,056	0.047	100.00%
IMPERVIOUS AREA	1,952	0.044	94.9
BUILDING COVERAGE	1,871	0.044	91.0
PAVEMENT/SIDEWALK COVERAGE	81	0.001	3.9
PERVIOUS AREA	104	0.002	5.1

PROPOSED SITE COVERAGE STATISTICS #11 SPRING STREET

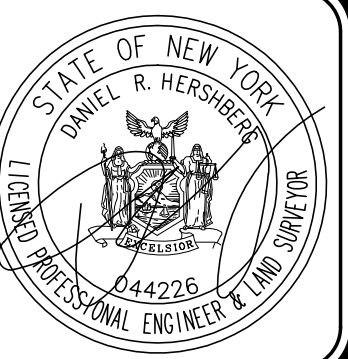
DESCRIPTION	S.F.	ACRES	%
GROSS SITE AREA	3,552	0.081	100.00%
IMPERVIOUS AREA	3,175	0.072	89.4
BUILDING COVERAGE	2,819	0.064	79.4
PAVEMENT/SIDEWALK COVERAGE	356	0.008	10.0
PERVIOUS AREA	377	0.009	10.6



HERSHBERG & HERSHBERG

Consulting Engineers and Land Surveyors
18 Locust Street
Albany, New York 12203

ALTERATION OF THIS DOCUMENT EXCEPT BY A LICENSED PROFESSIONAL ENGINEER OR LAND SURVEYOR, IS ILLEGAL



DATE	REVISIONS

SITE PLAN
 PROPOSED APARTMENTS
 #11 SPRING STREET
 ALBANY, NEW YORK
 FILE: 180218
 SCALE: 1"=10'
 CHK: DBH
 DATE: 8/6/19
 180218-1.DWG

FOR MUNICIPAL APPROVAL ONLY-NOT INTENDED FOR CONSTRUCTION

C2

Concrete Washout System

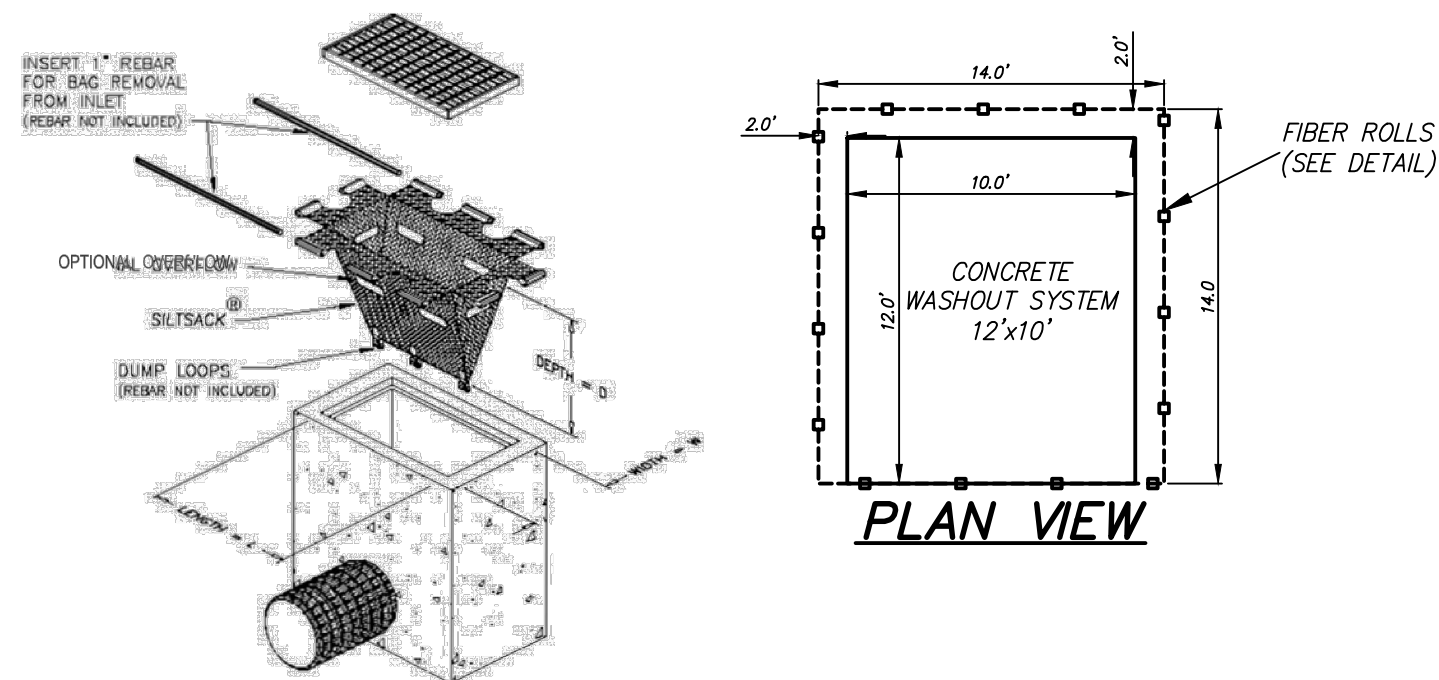


The Vinyl-Con Concrete Washout System is a vinyl container with a PVC framework and filter system for washing out concrete and pump trucks on the jobsite. The system is designed to hold 6 1/2 yds. of material, equivalent to washing out more than 30 concrete trucks. Manufactured by RTC Environmental Solutions. 530-589-2007.

Seam:

Surround with double layer of hay bales. Add the sign

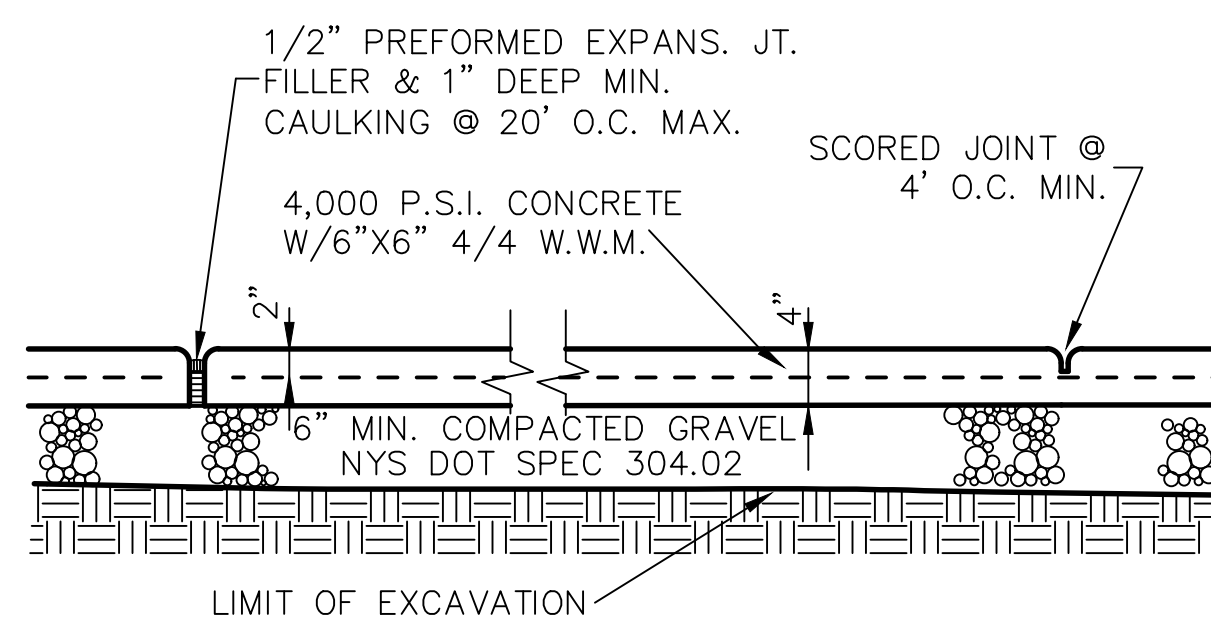
Silt Sack for CB



1/C3 CONCRETE WASHOUT SYSTEM DETAIL NOT TO SCALE

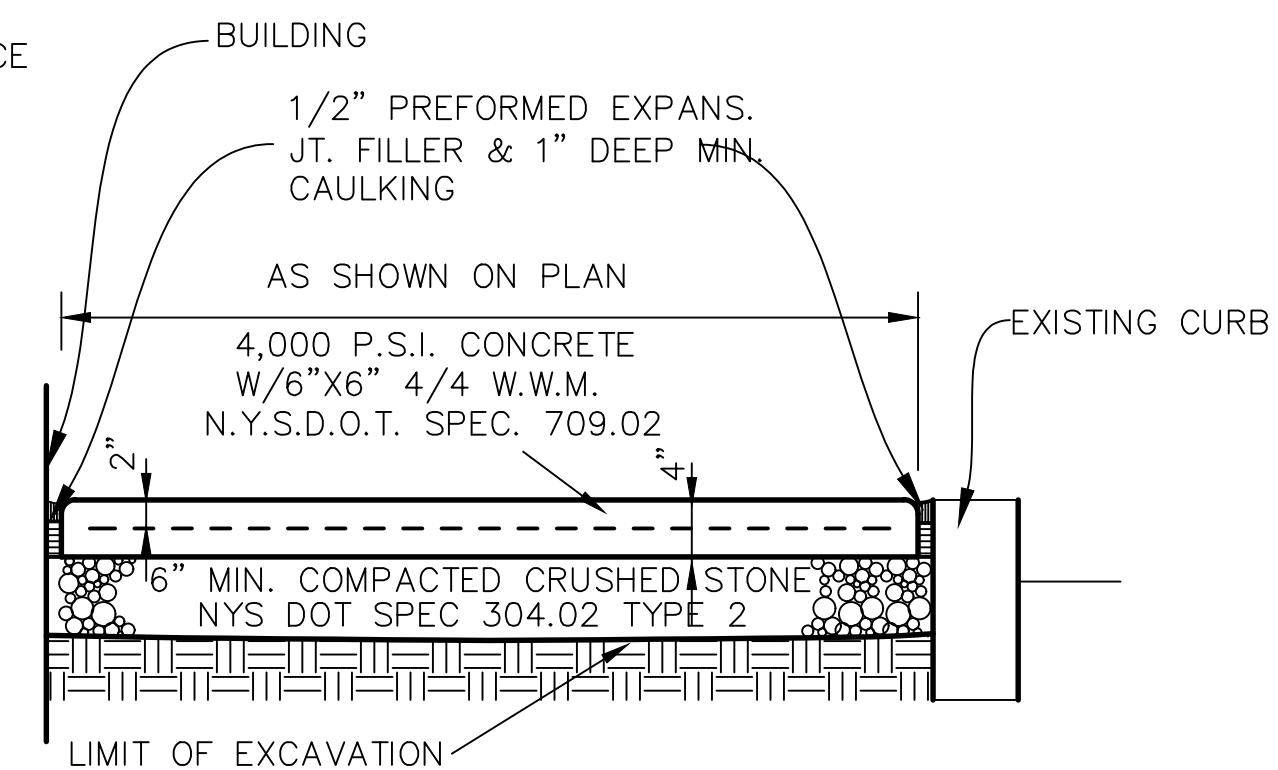
NOTES:

1. SIDEWALK SLOPE FROM BUILDING WALL TO CURB TO BE 1/8" PER FOOT
2. SIDEWALK FINISH TO BE MAGNESIUM FLOAT FINISH
3. CONCRETE WALK TO CONFORM TO CITY OF ALBANY ENGINEERING SPECIFICATIONS
4. CONCRETE USED SHALL HAVE AN AIR CONTENT OF 5% MIN. TO 7% MAX., AND A SLUMP OF THREE INCHES MIN. TO FIVE INCHES MAX.
5. ALL CONCRETE SIDEWALK REPLACEMENT SHALL BE TO FULL PANEL LIMITS. PARTIAL REPLACEMENTS WILL NOT BE ALLOWED.
6. EXPANSION JOINTS TO BE PLACED BETWEEN ADJACENT SLABS, AT BUILDING LINE OR PENETRATING STRUCTURES.
7. ALL CURBING SHALL BE RESET OR REPLACED AS REQUIRED IN ACCORDANCE WITH CITY DETAILS.



LONGITUDINAL SECTION

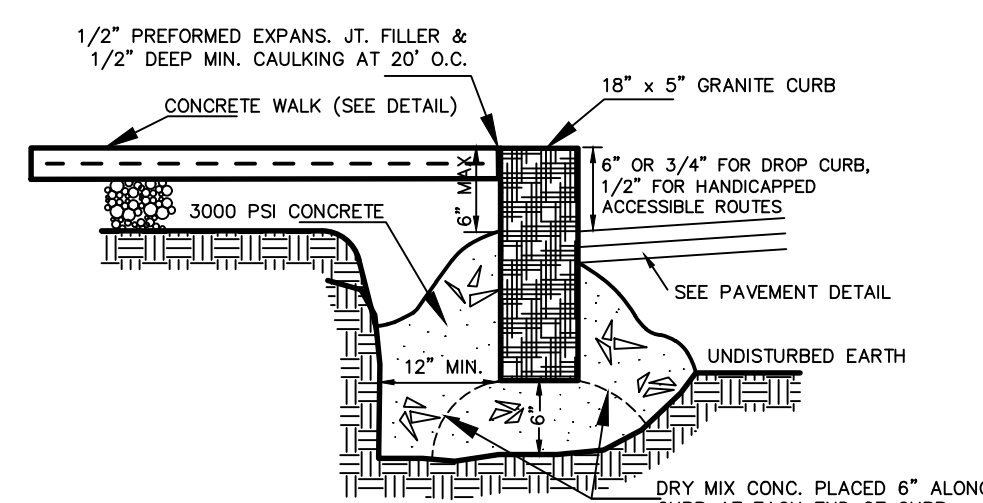
4/C3



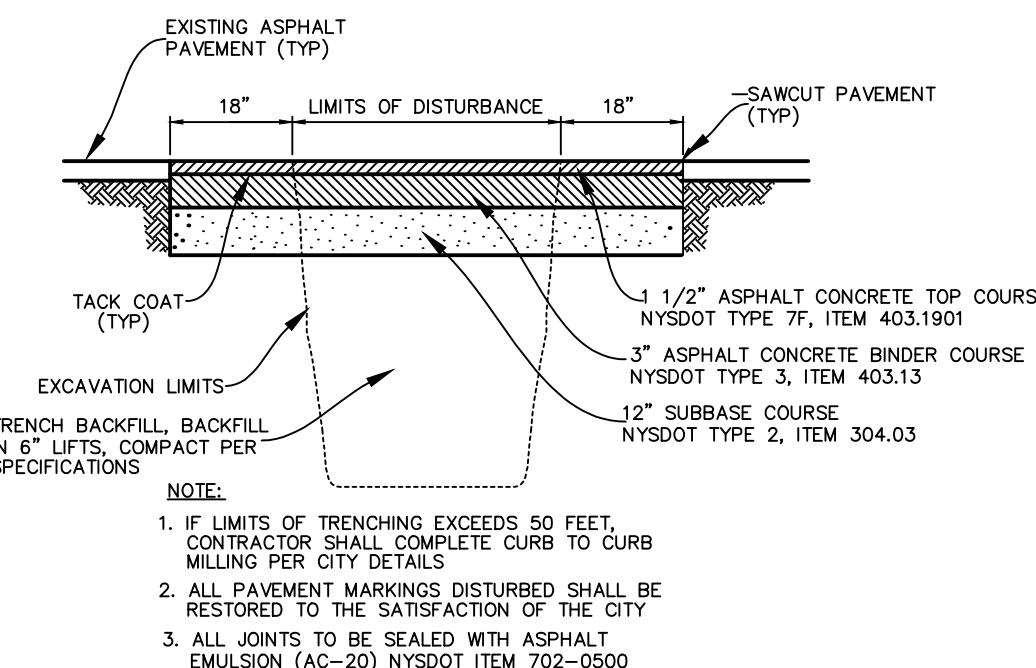
CROSS SECTION

CONCRETE WALK REPAIR DETAIL IN CITY R.O.W.

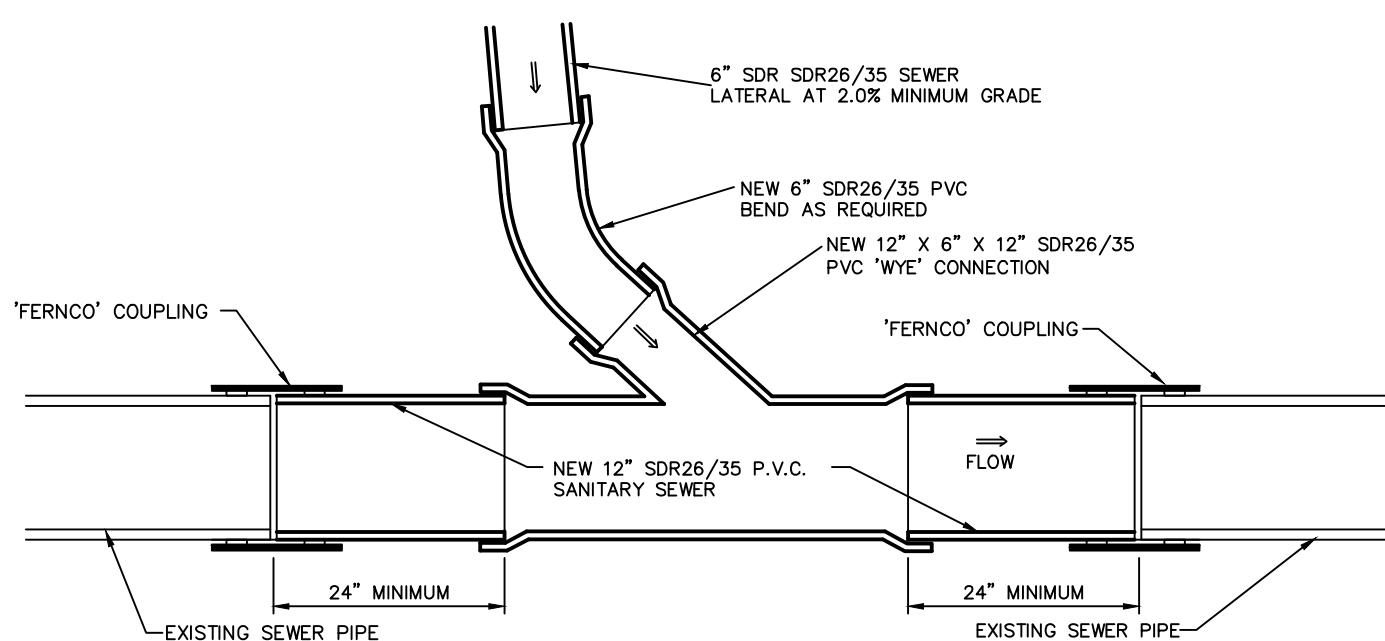
NOT TO SCALE



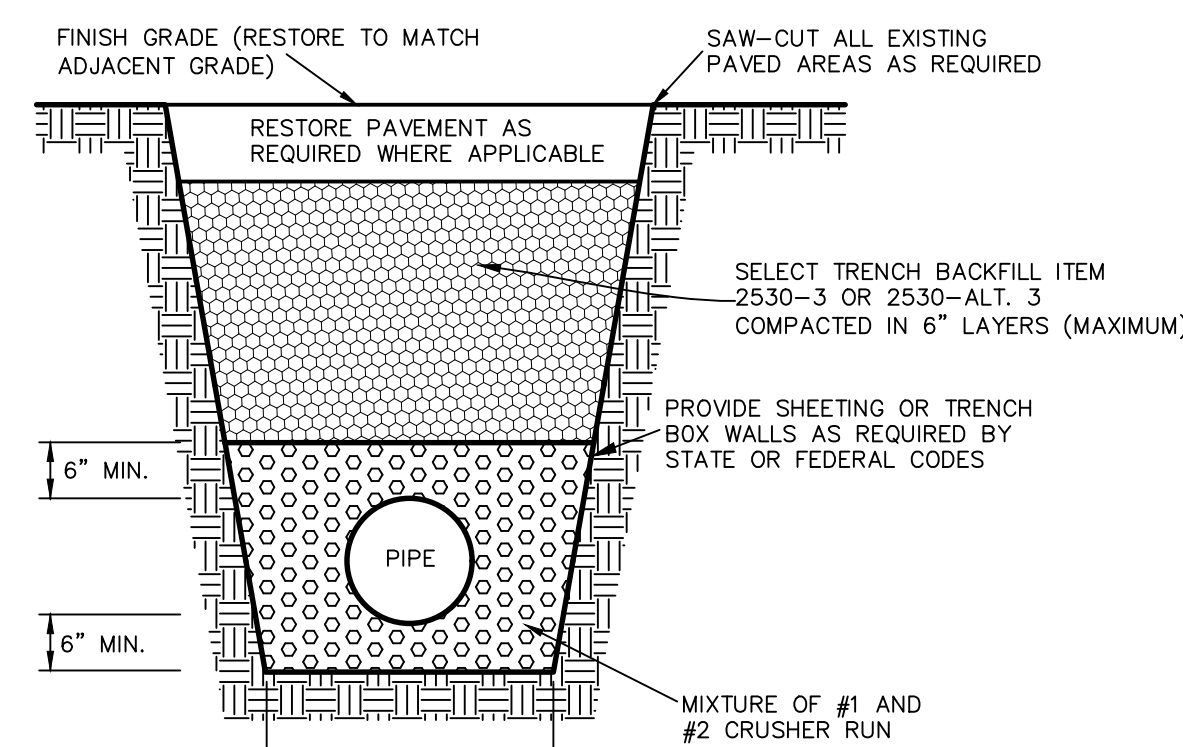
3/C3 NEW OR RELAY GRANITE CURB DETAIL NOT TO SCALE



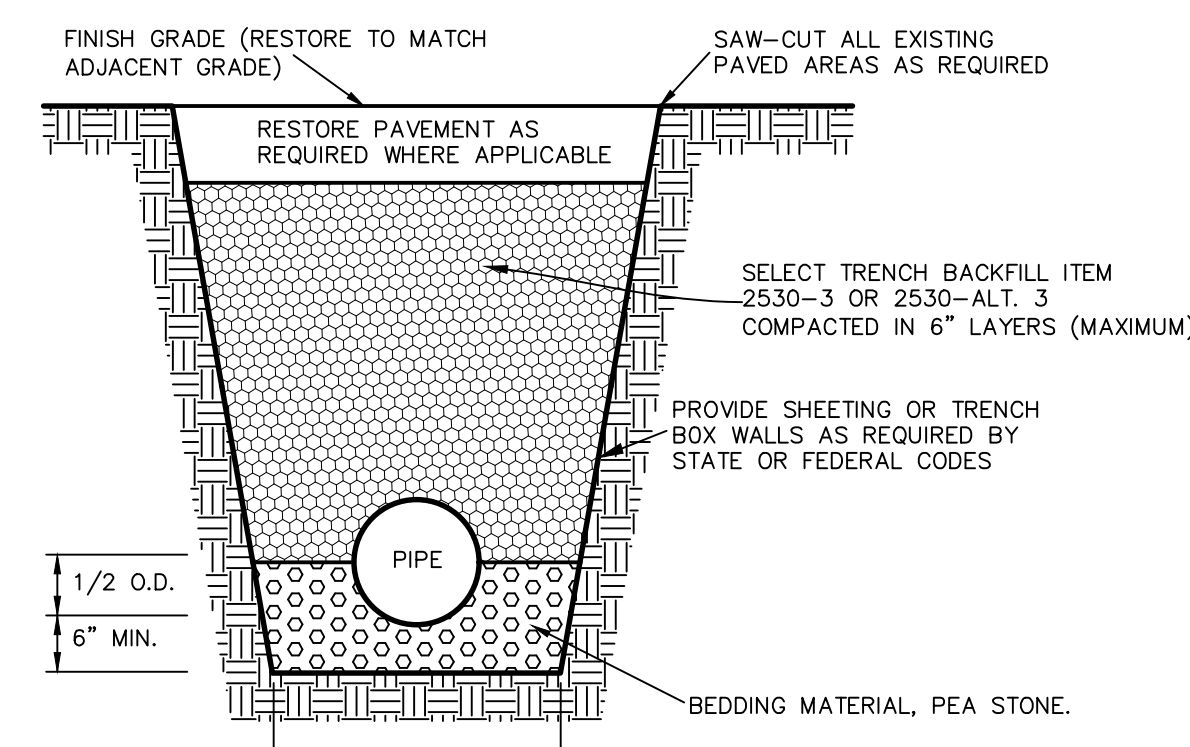
5/C3 STREET RESTORATION ASPHALT PAVEMENT DETAIL NOT TO SCALE



2/C3 PLAN SECTION CUT IN WYE DETAIL NOT TO SCALE

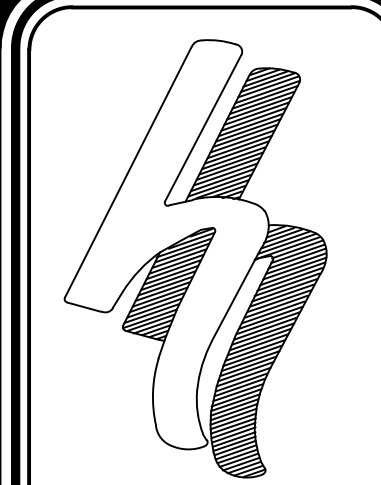


6/C3 TYPICAL SANITARY SEWER TRENCH DETAIL NOT TO SCALE



7/C3 TYPICAL STORM SEWER TRENCH DETAIL NOT TO SCALE

FOR MUNICIPAL APPROVAL ONLY-NOT INTENDED FOR CONSTRUCTION

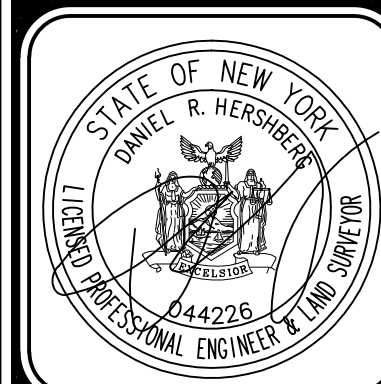


HERSHBERG & HERSHBERG

Consulting Engineers and Land Surveyors

18 Locust Street
Albany, New York 12203

ALTERATION OF THIS DOCUMENT EXCEPT BY A LICENSED PROFESSIONAL ENGINEER OR LAND SURVEYOR, IS ILLEGAL



DATE	REVISIONS

DETAILS
 PROPOSED APARTMENTS
 #11 SPRING STREET
 ALBANY, NEW YORK

180218-1.DWG

DATE: 8/6/19

CHK: DBH

BY: AS

SCALE: NTS

FILE: 180218

C3