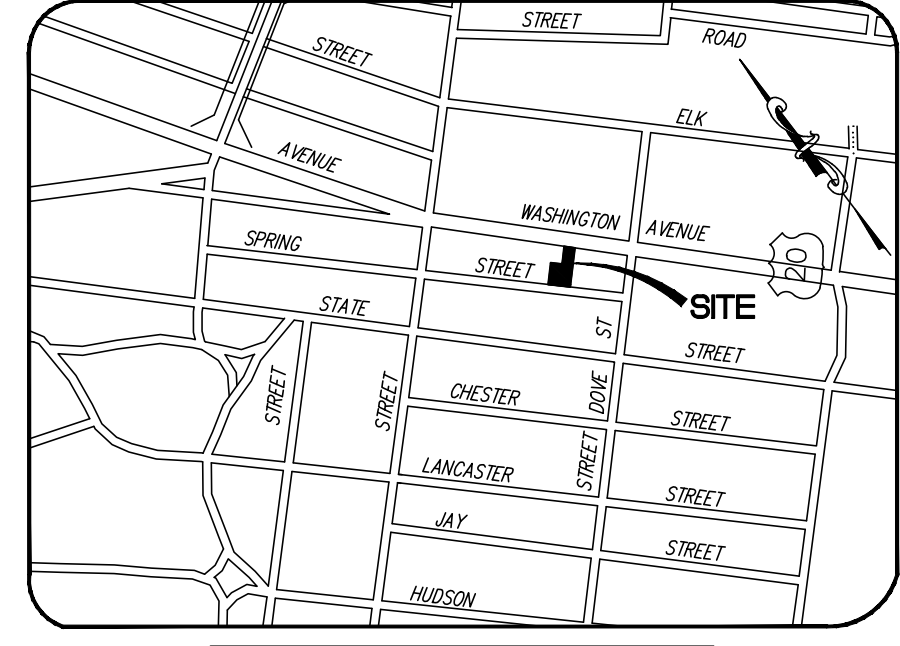
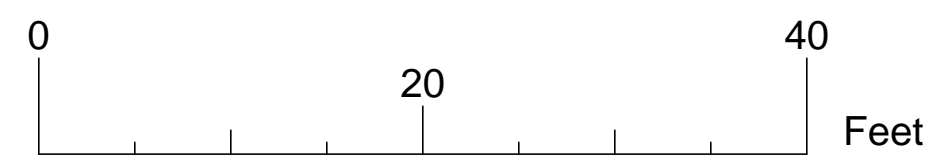
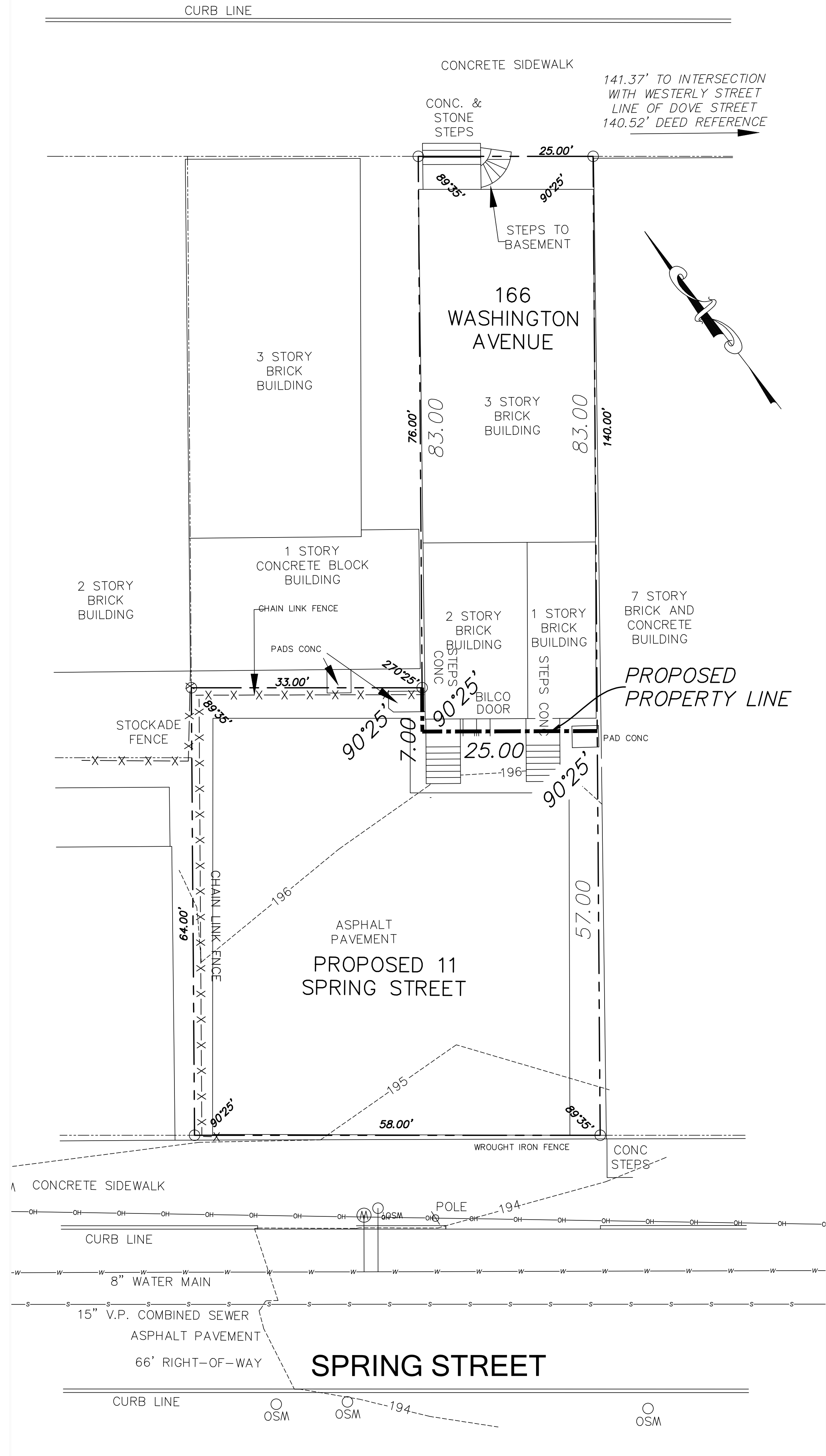
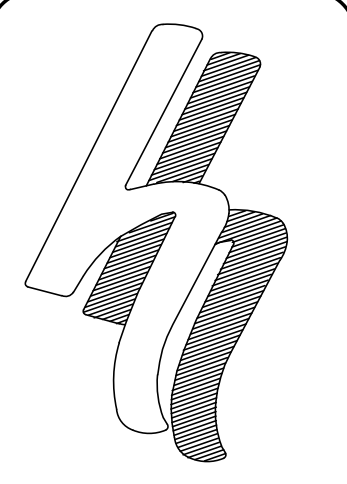


WASHINGTON AVENUE

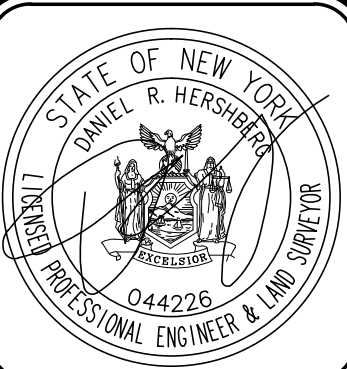


LEGEND	
	UTILITY POLE
	WATER SHUTOFF
	HYDRANT
	WATER VALVE



HERSHBERG & HERSHBERG
Consulting Engineers and Land Surveyors
18 Locust Street
Albany, New York 12203

ALTERATION OF THIS DOCUMENT EXCEPT BY A LICENSED PROFESSIONAL ENGINEER OR LAND SURVEYOR, IS ILLEGAL.



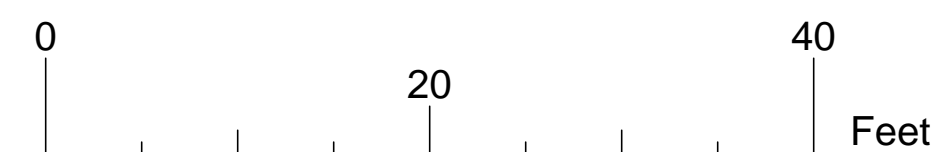
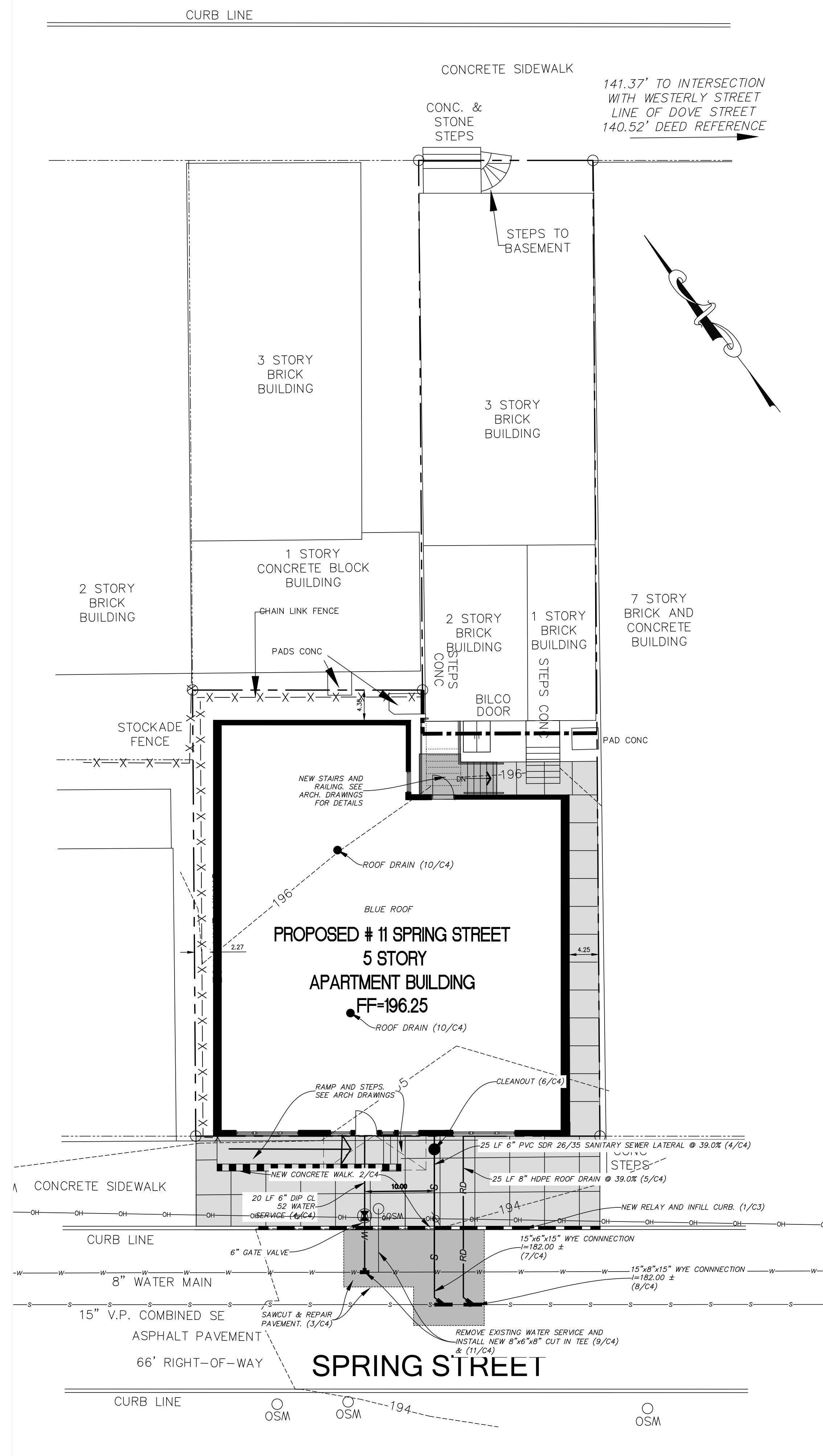
DATE	REVISIONS
10/4/19	COMMENT LETTERS
12/2/19	GENERAL COMMENTS
12/19/19	GENERAL REVISIONS
4/17/20	ACCESS REVISED

EXISTING CONDITIONS
PROPOSED APARTMENTS
#11 SPRING STREET
ALBANY, NEW YORK

FILE: 190218 SCALE: 1"=10' CHK: DRH BY: AS DATE: 8/25/19

C1

WASHINGTON AVENUE



NOTES

- 48 HOURS NOTICE MUST BE GIVEN TO DEPARTMENT OF WATER FOR INSPECTIONS FOR THE SANITARY, WATER AND STORMWATER UTILITIES.
- PRESSURE AND LEAKAGE TESTING OF THE WATER SERVICE SHALL BE WITNESSED BY DEPARTMENT STAFF AND ACCEPTABLE BACTERIOLOGICAL TEST MUST BE SUBMITTED AND ACCEPTED BY THE DEPARTMENT PRIOR TO FINAL OF THE NEW WATER SERVICE.
- PRIOR TO USE, ALL WATER LINES MUST BE CHLORINATED AND HAVE A BACTERIOLOGICAL TEST PERFORMED IN ACCORDANCE WITH CITY OF ALBANY STANDARDS.
- ALBANY WATER DEPARTMENT MUST TAP THEIR OWN MAINS.
- FIRE SPRINKLER SYSTEM WILL BE DESIGNED UNDER NFPA 13R. THE FIRE SERVICE WILL BE A 4" SERVICE WITH WATTS LF709 DOUBLE CHECK VALVES. POTABLE WATER SERVICE WILL BE A 2" SERVICE WITH WATTS LF719 DOUBLE CHECK VALVES.

EXISTING SITE COVERAGE STATISTICS

DESCRIPTION	S.F.	ACRES	%
GROSS SITE AREA	5,612	0.128	100.00%
IMPERVIOUS AREA	5,420	0.124	96.6
BUILDING COVERAGE	1,871	0.042	33.3
PAVEMENT/SIDEWALK COVERAGE	3,549	0.081	63.3
PERVIOUS AREA	192	0.004	3.4

PROPOSED SITE COVERAGE STATISTICS #166 WASHINGTON AVENUE

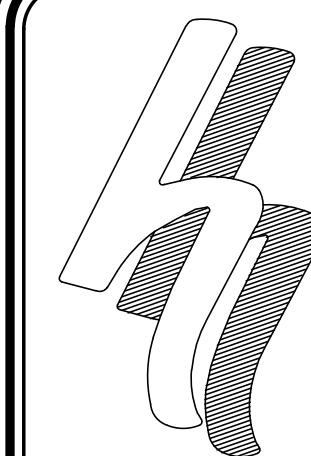
DESCRIPTION	S.F.	ACRES	%
GROSS SITE AREA	2,056	0.047	100.00%
IMPERVIOUS AREA	1,952	0.044	94.9
BUILDING COVERAGE	1,871	0.044	91.0
PAVEMENT/SIDEWALK COVERAGE	81	0.001	3.9
PERVIOUS AREA	104	0.002	5.1

PROPOSED SITE COVERAGE STATISTICS #11 SPRING STREET

DESCRIPTION	S.F.	ACRES	%
GROSS SITE AREA	3,552	0.081	100.00%
IMPERVIOUS AREA	3,175	0.072	89.4
BUILDING COVERAGE	2,819	0.064	79.4
PAVEMENT/SIDEWALK COVERAGE	356	0.008	10.0
PERVIOUS AREA	377	0.009	10.6

LEGEND

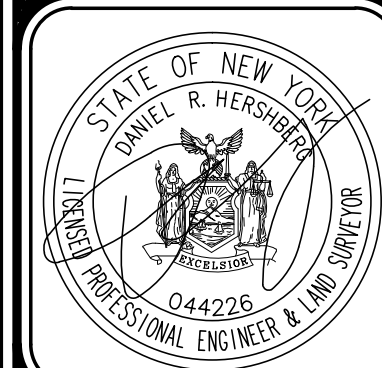
- UTILITY POLE
- WATER SHUTOFF
- HYDRANT
- WATER VALVE
- PROPOSED WATER SERVICE
- PROPOSED SANITARY SEWER
- PROPOSED ROOF DRAIN
- PROPOSED ROOF DRAIN LOCATION
- NEW PAVEMENT
- NEW CONCRETE WALK



HERSHBERG & HERSHBERG
Consulting Engineers
and Land Surveyors

18 Locust Street
Albany, New York 12203

ALTERATION OF THIS DOCUMENT EXCEPT BY A LICENSED PROFESSIONAL ENGINEER OR LAND SURVEYOR, IS ILLEGAL.

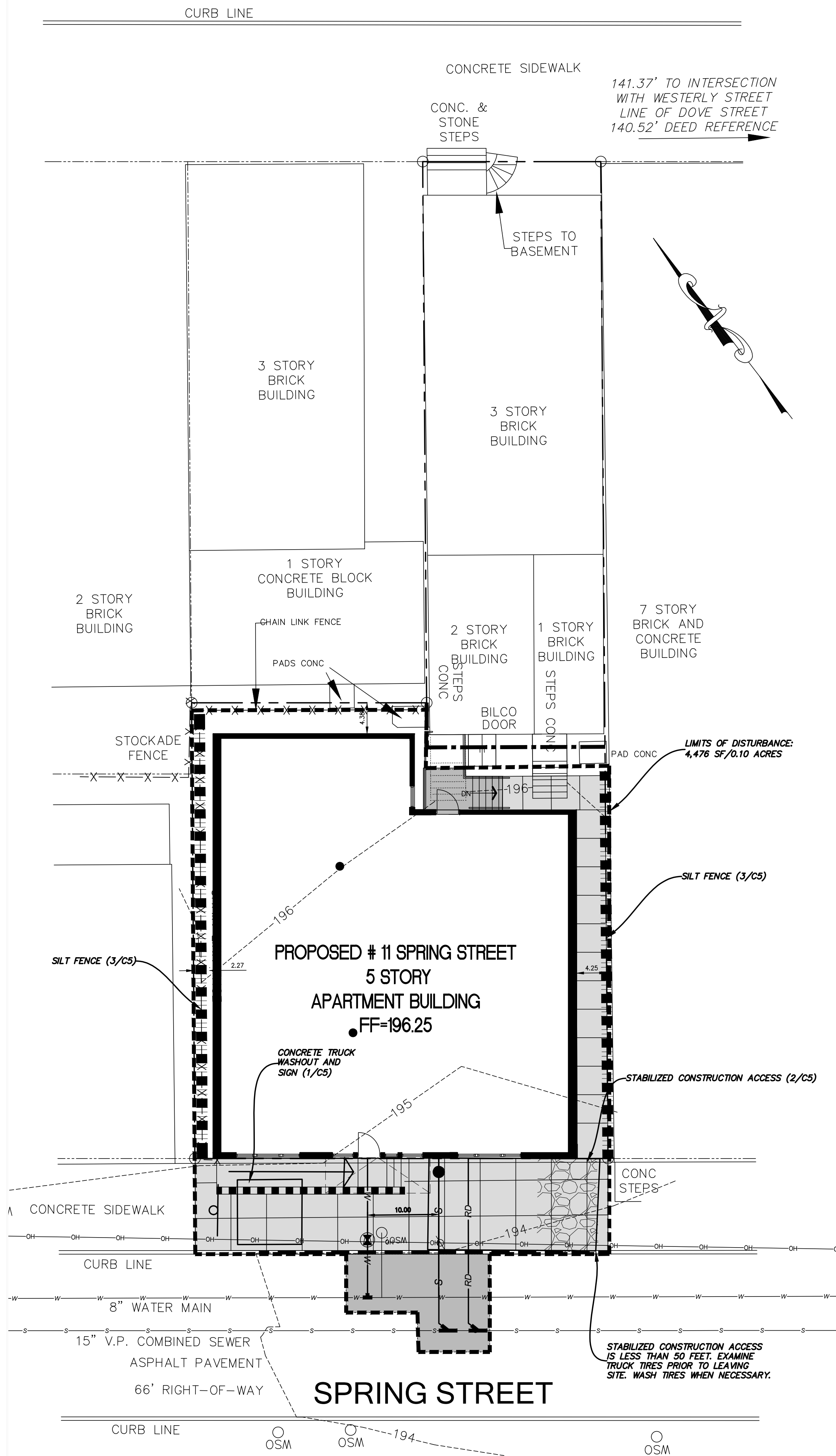


DATE	REVISIONS
10/4/19	COMMENT LETTERS
12/2/19	AND COMMENTS
12/19/19	GENERAL REVISIONS
4/7/20	ACCESS REVISED
4/29/20	ELECTRICAL LINE RELOCATION

SITE PLAN
PROPOSED APARTMENTS
#11 SPRING STREET
ALBANY, NEW YORK

FILE: 190218 SCALE: 1"=10' CHK: DRH DATE: 8/6/19 BY: AS

WASHINGTON AVENUE

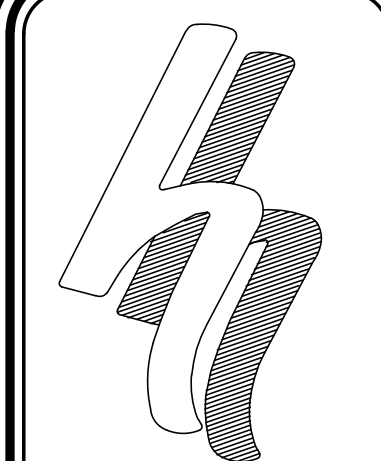


LEGEND

- UTILITY POLE
- WATER SHUTOFF
- HYDRANT
- WATER VALVE
- PROPOSED WATER SERVICE
- PROPOSED SANITARY SEWER
- PROPOSED ROOF DRAIN
- PROPOSED ROOF DRAIN LOCATION
- NEW PAVEMENT
- NEW CONCRETE WALK

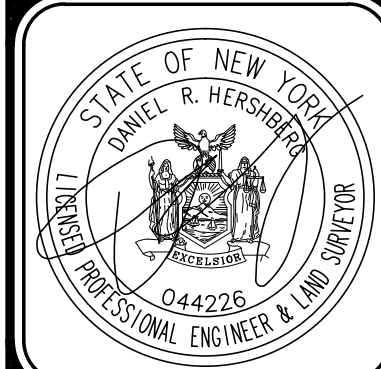
ESC LEGEND

- SILT FENCE
- LIMITS OF DISTURBANCE
- TEMPORARY SEDIMENT CONTROL TRAP CONTOURS
- TEMPORARY PERIMETER SWALE
- DROP INLET PROTECTION
- FUELING AREA
- STOCKPILE, STAGING, AND MATERIAL STORAGE AREA



HERSHBERG & HERSHBERG
 Consulting Engineers and Land Surveyors
 18 Locust Street
 Albany, New York 12203

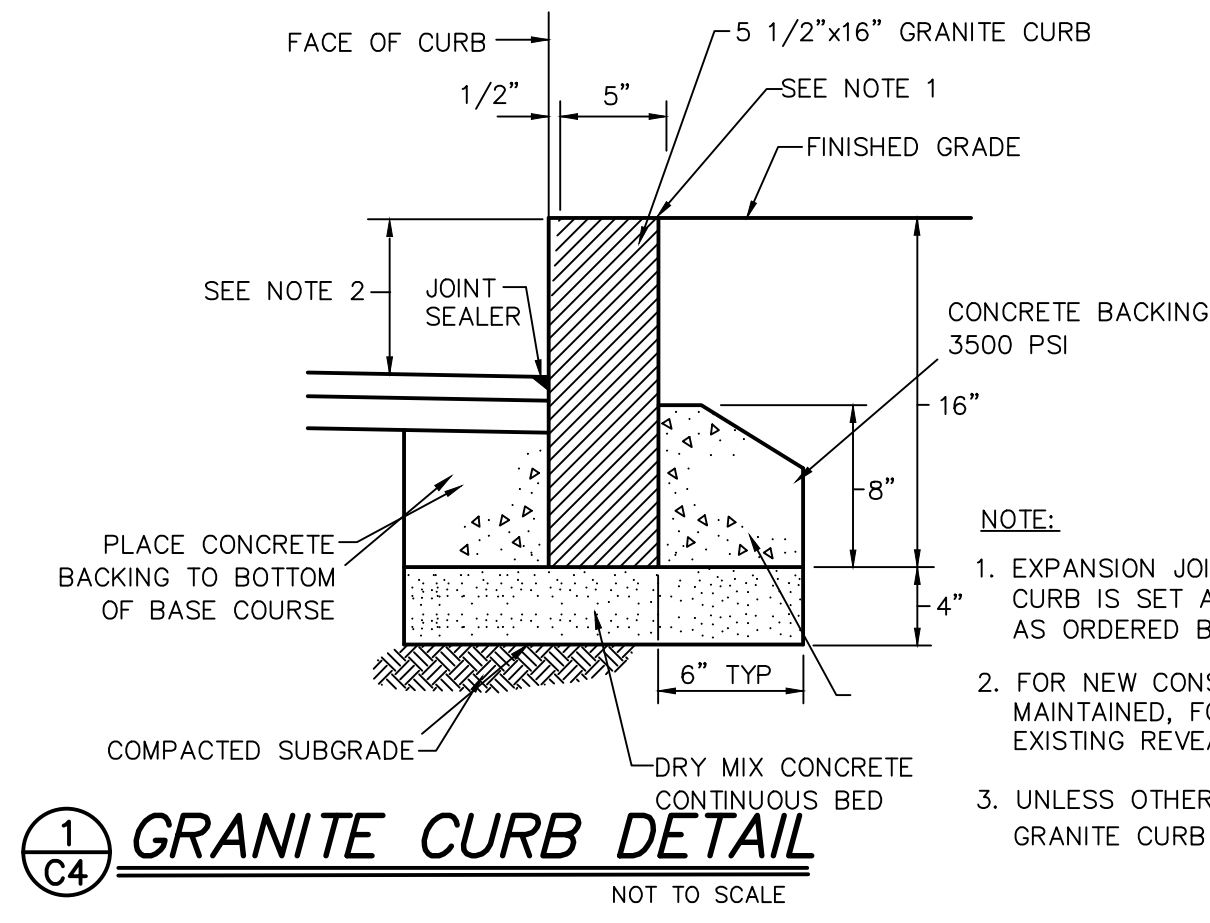
ALTERATION OF THIS DOCUMENT EXCEPT BY A LICENSED PROFESSIONAL ENGINEER OR LAND SURVEYOR, IS ILLEGAL.



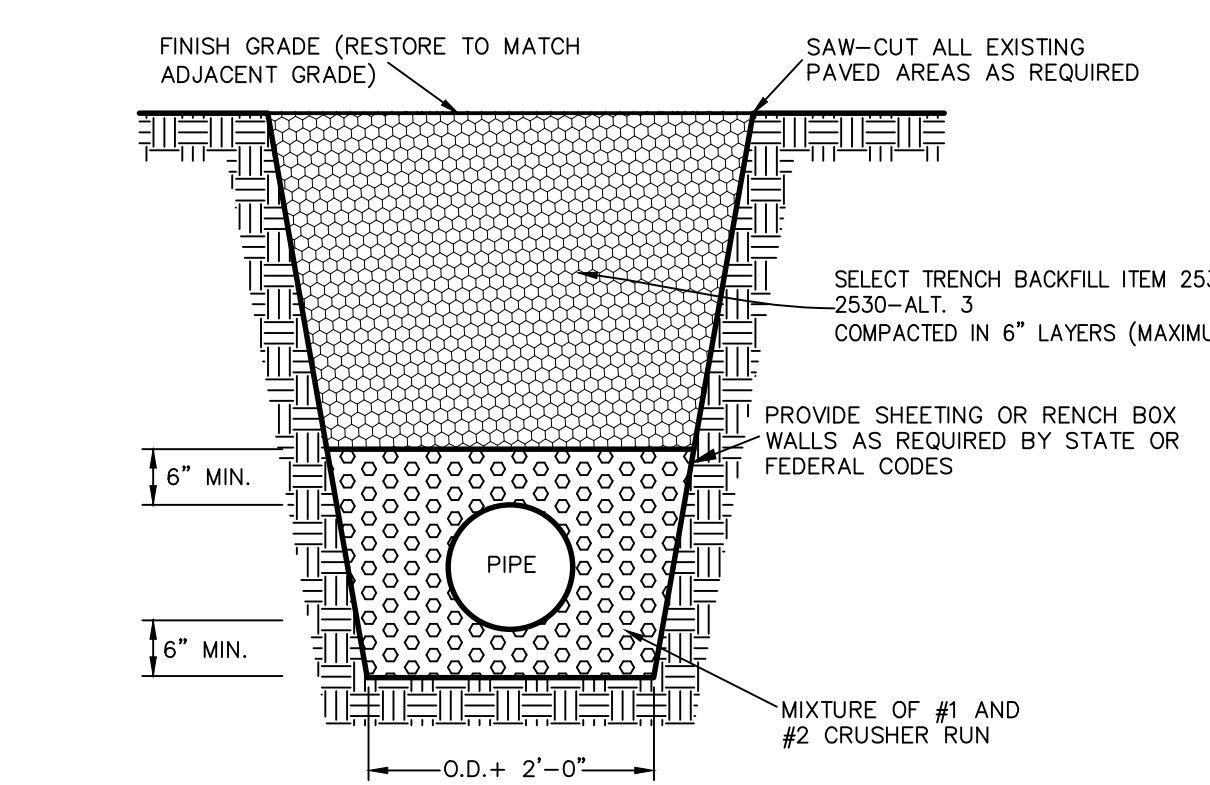
DATE	REVISIONS
10/4/19	COMMENT LETTERS
12/2/19	GENERAL REVISIONS
12/19/19	ACCESS REVISIONS
4/7/20	ELECTRICAL LINE RELOCATION
4/29/20	

EROSION AND SEDIMENT CONTROL PLAN
PROPOSED APARTMENTS
#11 SPRING STREET
ALBANY, NEW YORK

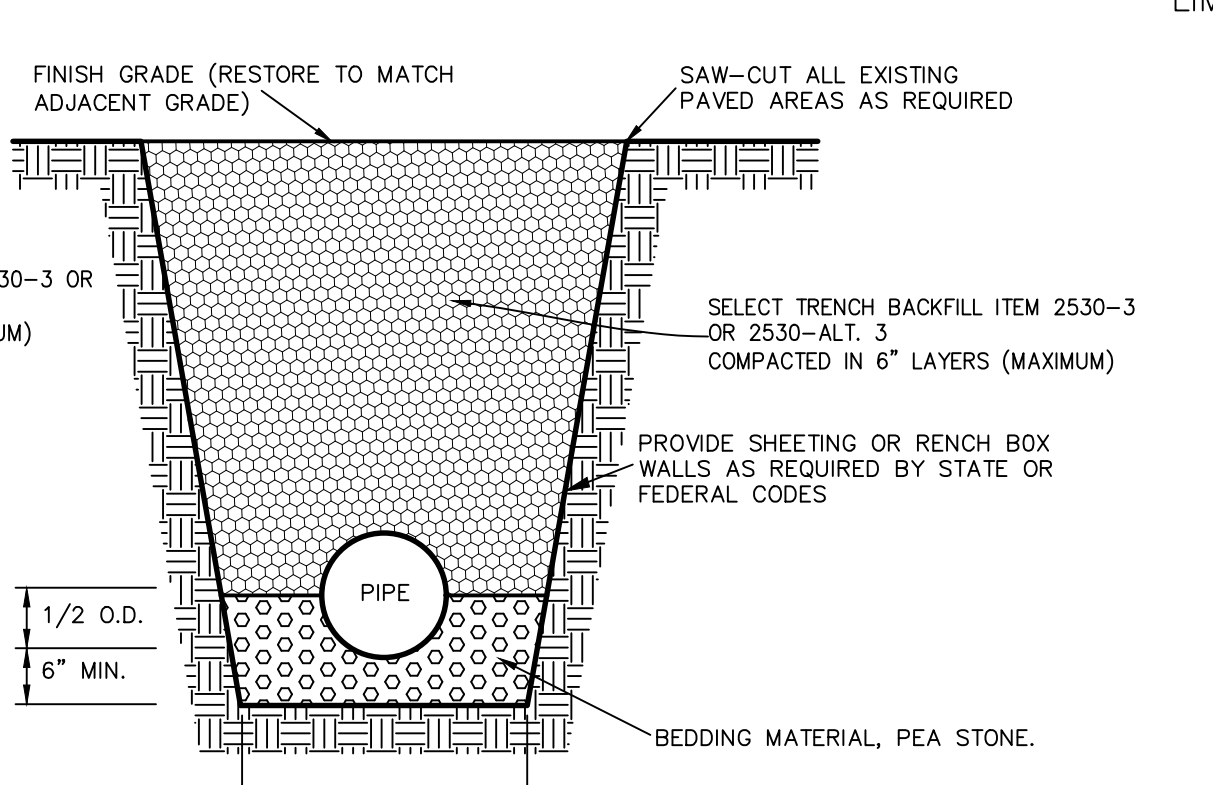
FILE: 190218
 SCALE: 1"=10'
 BY: AS
 CHK: DRH
 DATE: 9/20/19
 190218-1.DWG



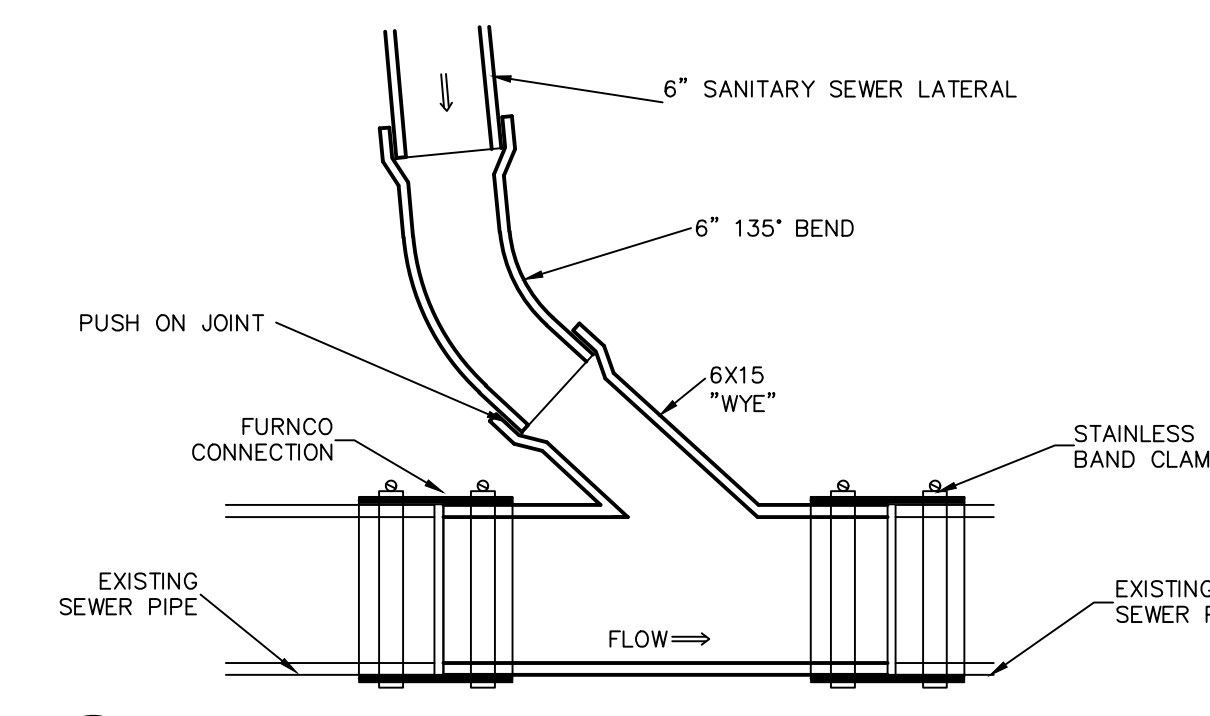
1 C4 GRANITE CURB DETAIL
NOT TO SCALE



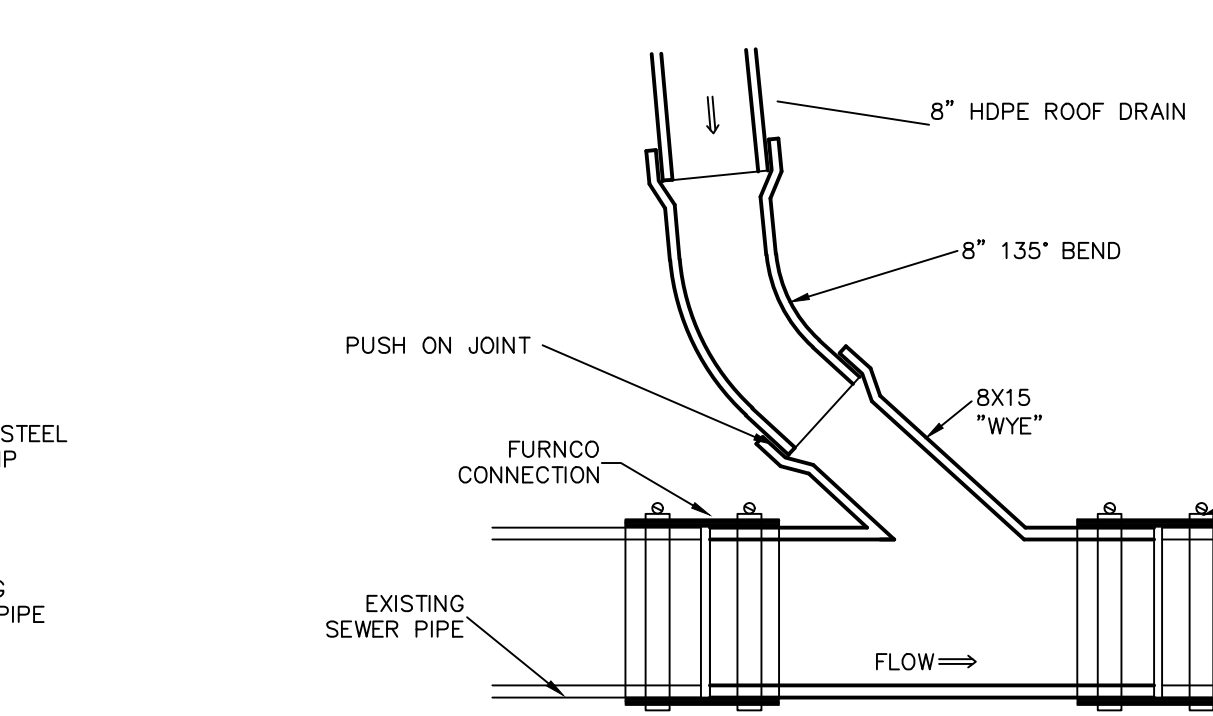
4 C4 TYPICAL SANITARY SEWER & WATER MAIN TRENCH DETAIL
NOT TO SCALE



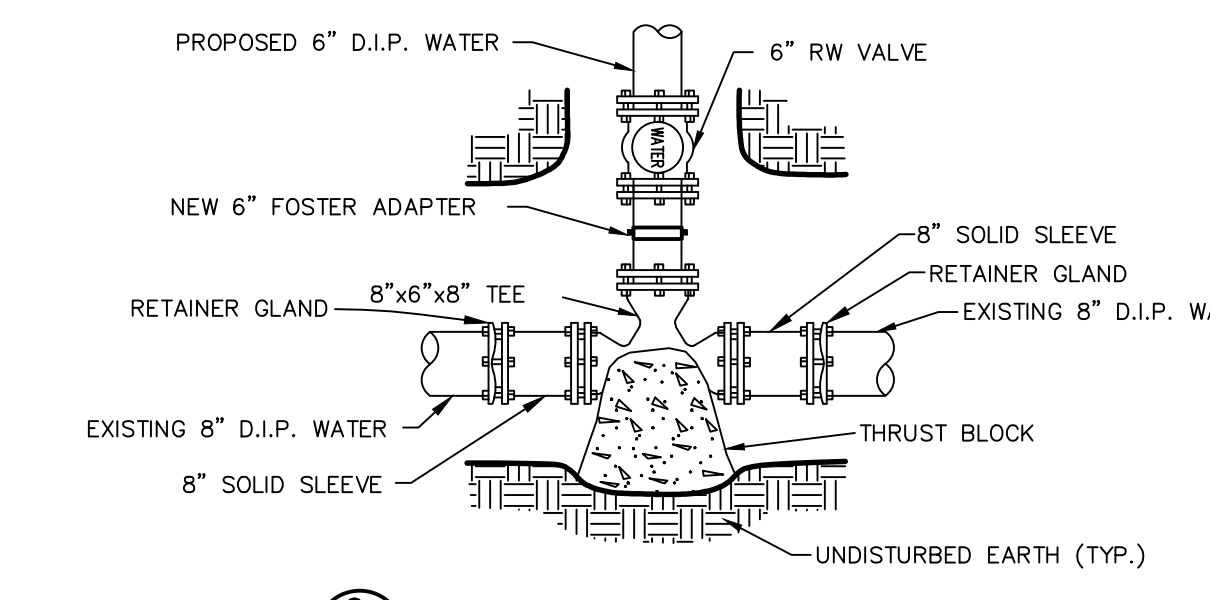
5 C4 TYPICAL STORM SEWER TRENCH DETAIL
NOT TO SCALE



7 C4 PLAN SECTION WYE CONNECTION DETAIL
NOT TO SCALE

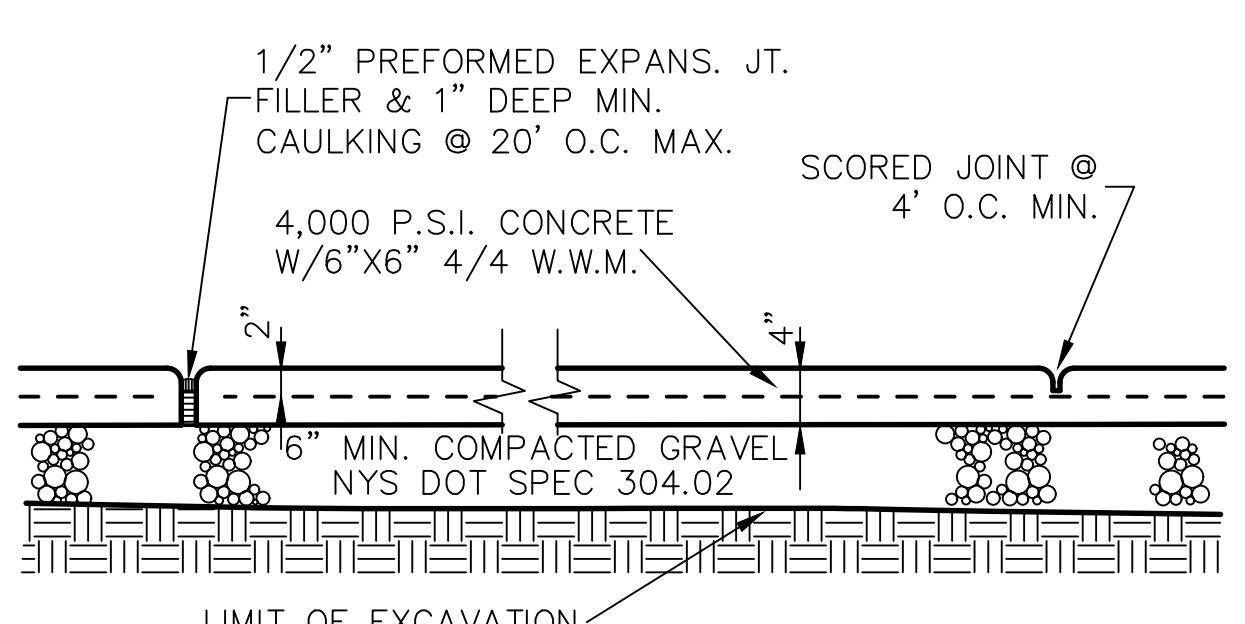


8 C4 PLAN SECTION WYE CONNECTION DETAIL
NOT TO SCALE

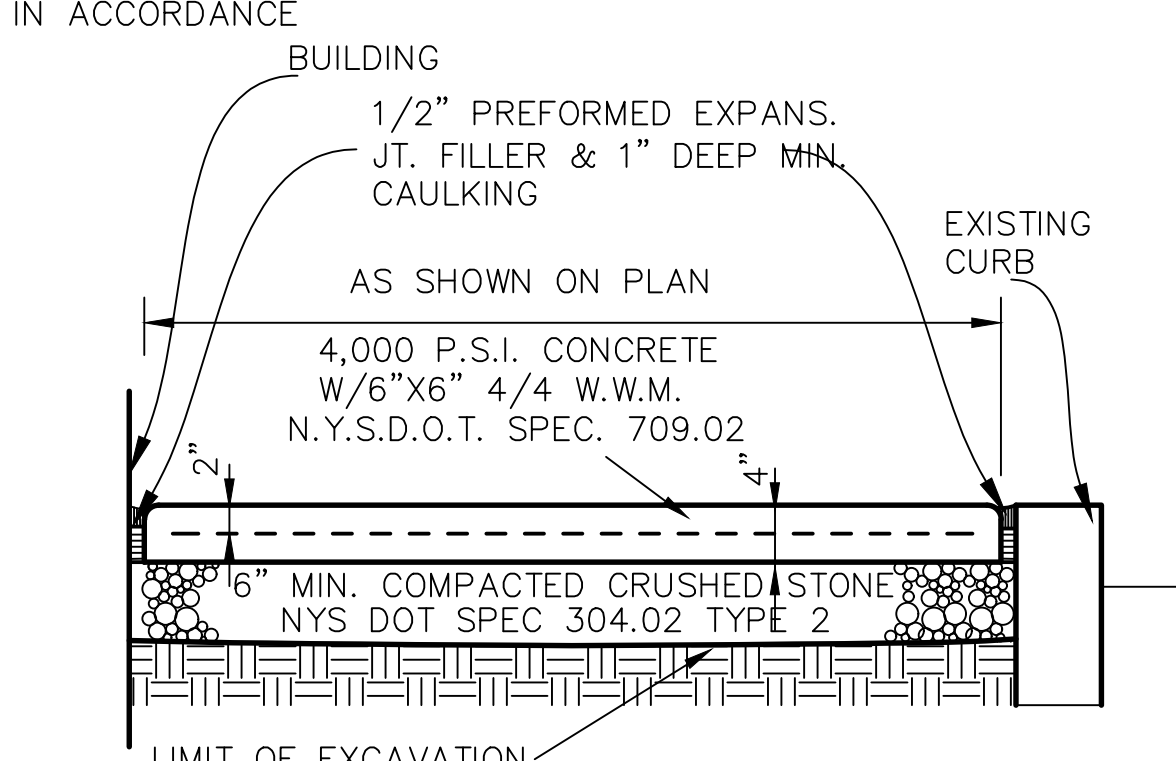


9 C4 CUT IN TEE DETAIL
NOT TO SCALE

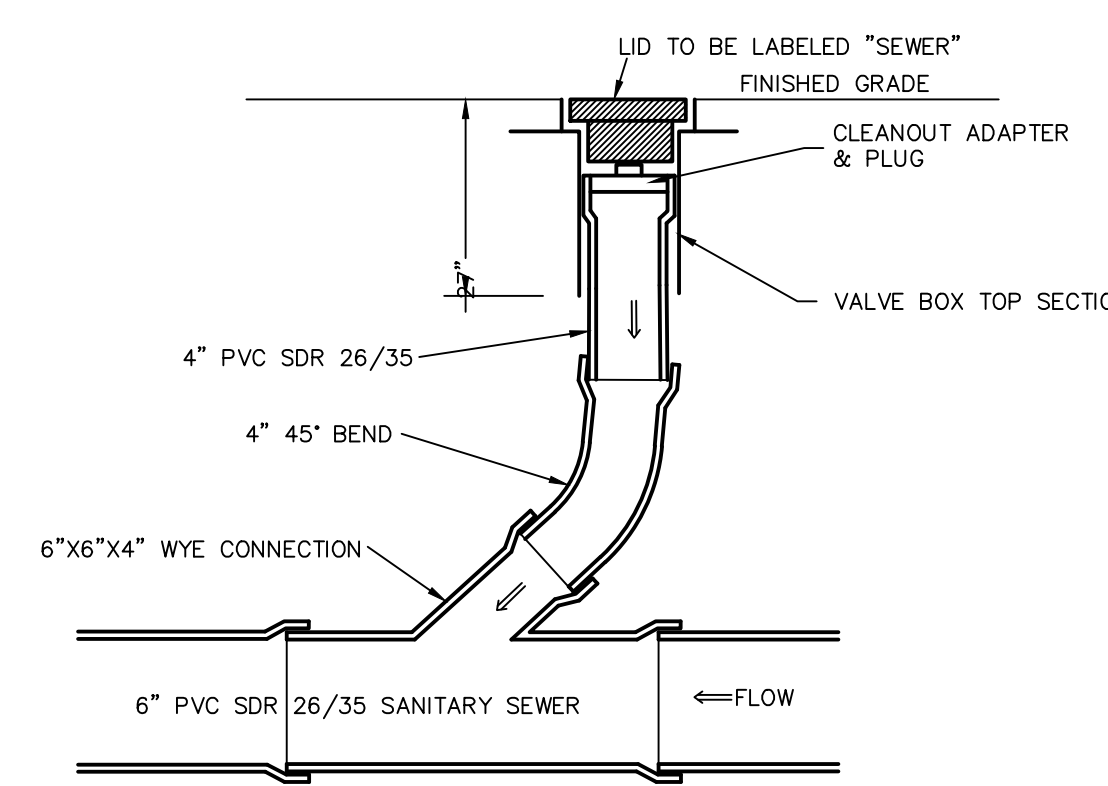
- NOTES:
- SIDEWALK SLOPE FROM BUILDING WALL TO CURB TO BE 1/8" PER FOOT
 - SIDEWALK FINISH TO BE MAGNESIUM FLOAT FINISH
 - CONCRETE WALK TO CONFORM TO CITY OF ALBANY ENGINEERING SPECIFICATIONS
 - CONCRETE USED SHALL HAVE AN AIR CONTENT OF 5% MIN. TO 7% MAX., AND A SLUMP OF THREE INCHES MIN. TO FIVE INCHES MAX.
 - ALL CONCRETE SIDEWALK REPLACEMENT SHALL BE TO FULL PANEL LIMITS. PARTIAL REPLACEMENTS WILL NOT BE ALLOWED.
 - EXPANSION JOINTS TO BE PLACED BETWEEN ADJACENT SLABS, AT BUILDING LINE OR PENETRATING STRUCTURES.
 - ALL CURBING SHALL BE RESET OR REPLACED AS REQUIRED IN ACCORDANCE WITH CITY DETAILS.



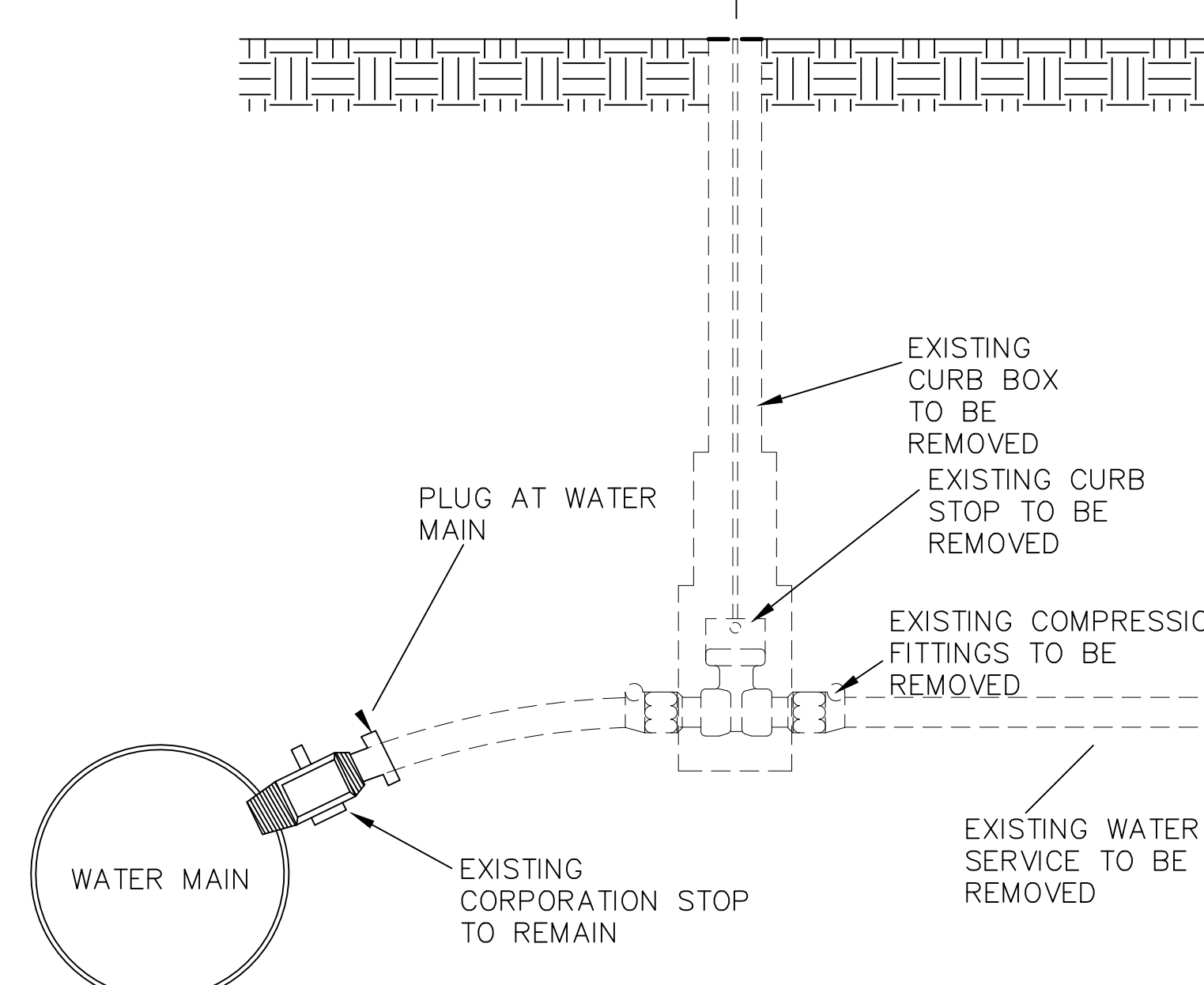
2 C4 LONGITUDINAL SECTION CONCRETE WALK REPAIR DETAIL IN CITY R.O.W.
NOT TO SCALE



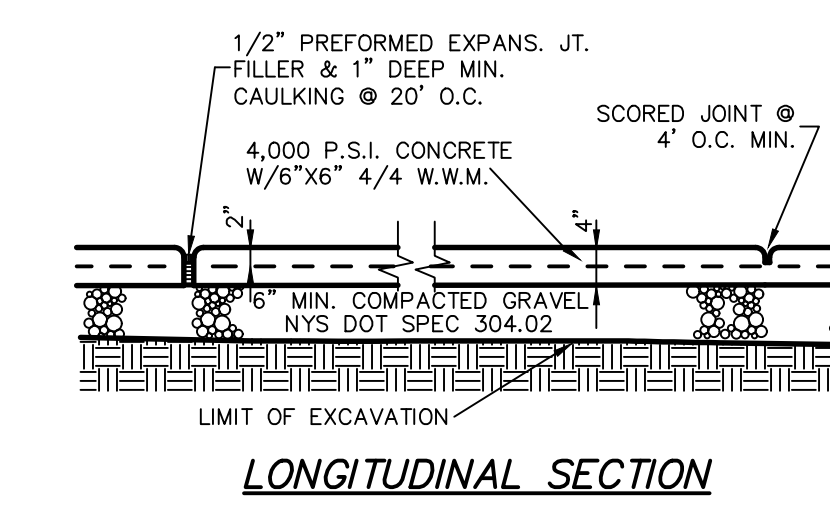
3 C4 CROSS SECTION STREET RESTORATION ASPHALT PAVEMENT DETAIL
NOT TO SCALE



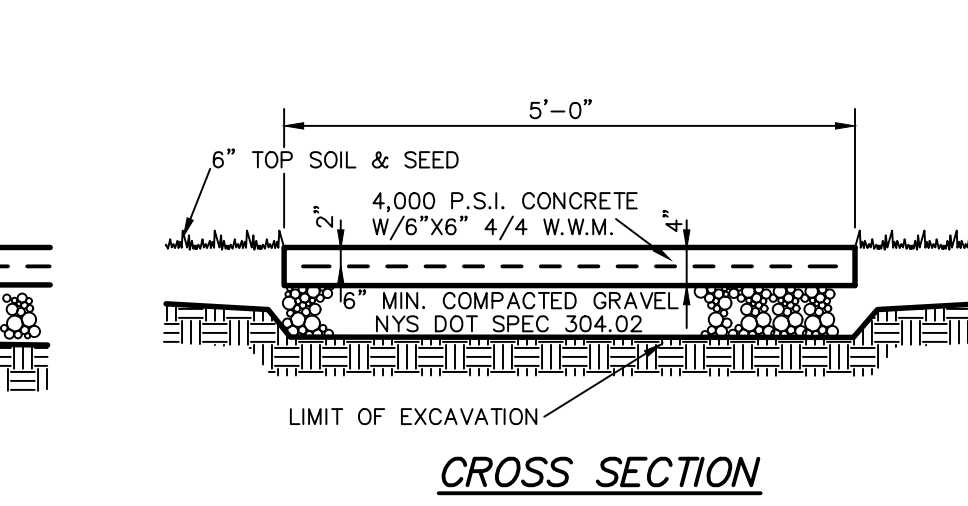
6 C4 IN LINE CLEANOUT DETAIL
NOT TO SCALE



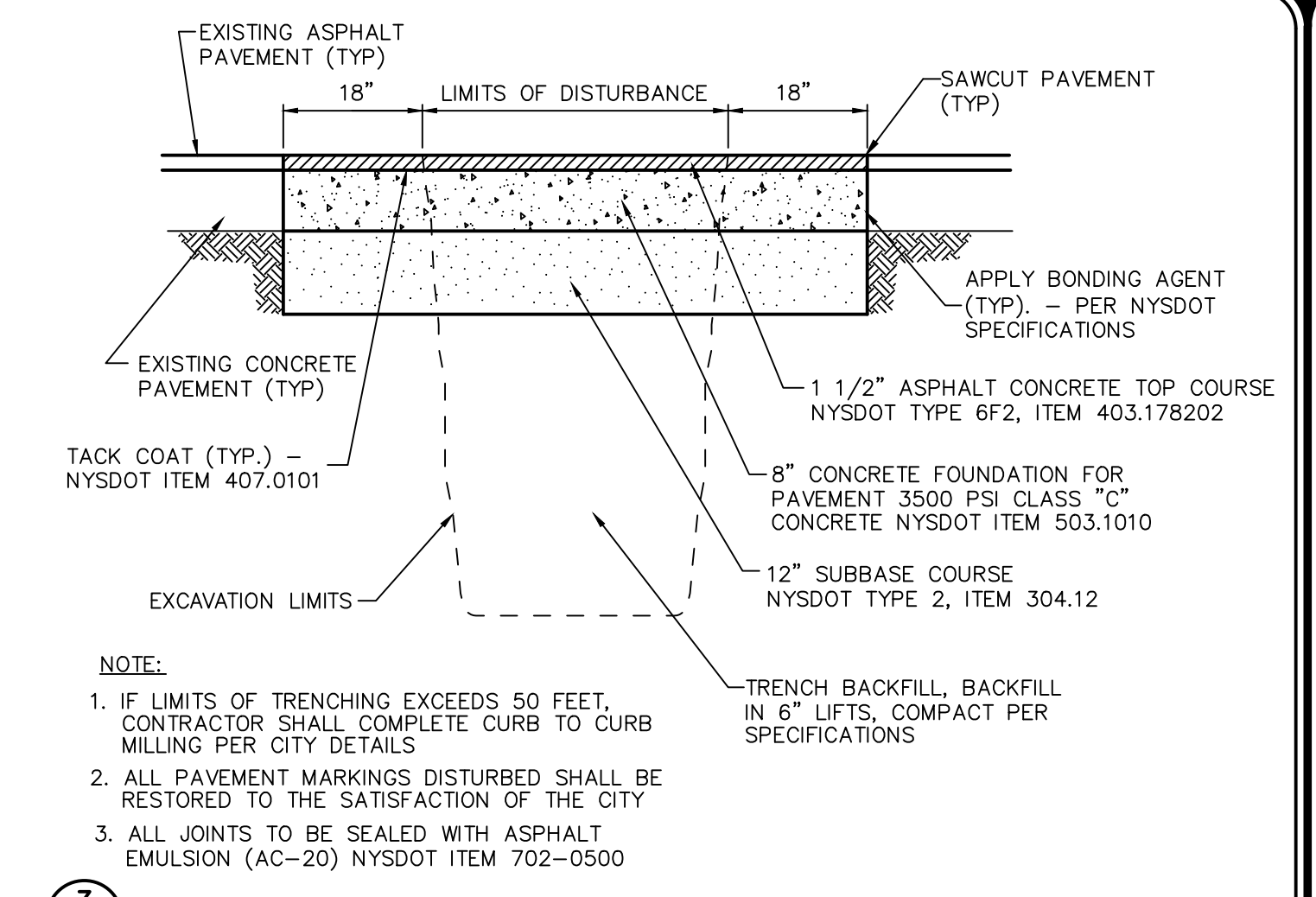
11 C4 WATER SERVICE ABANDONMENT DETAIL
NOT TO SCALE



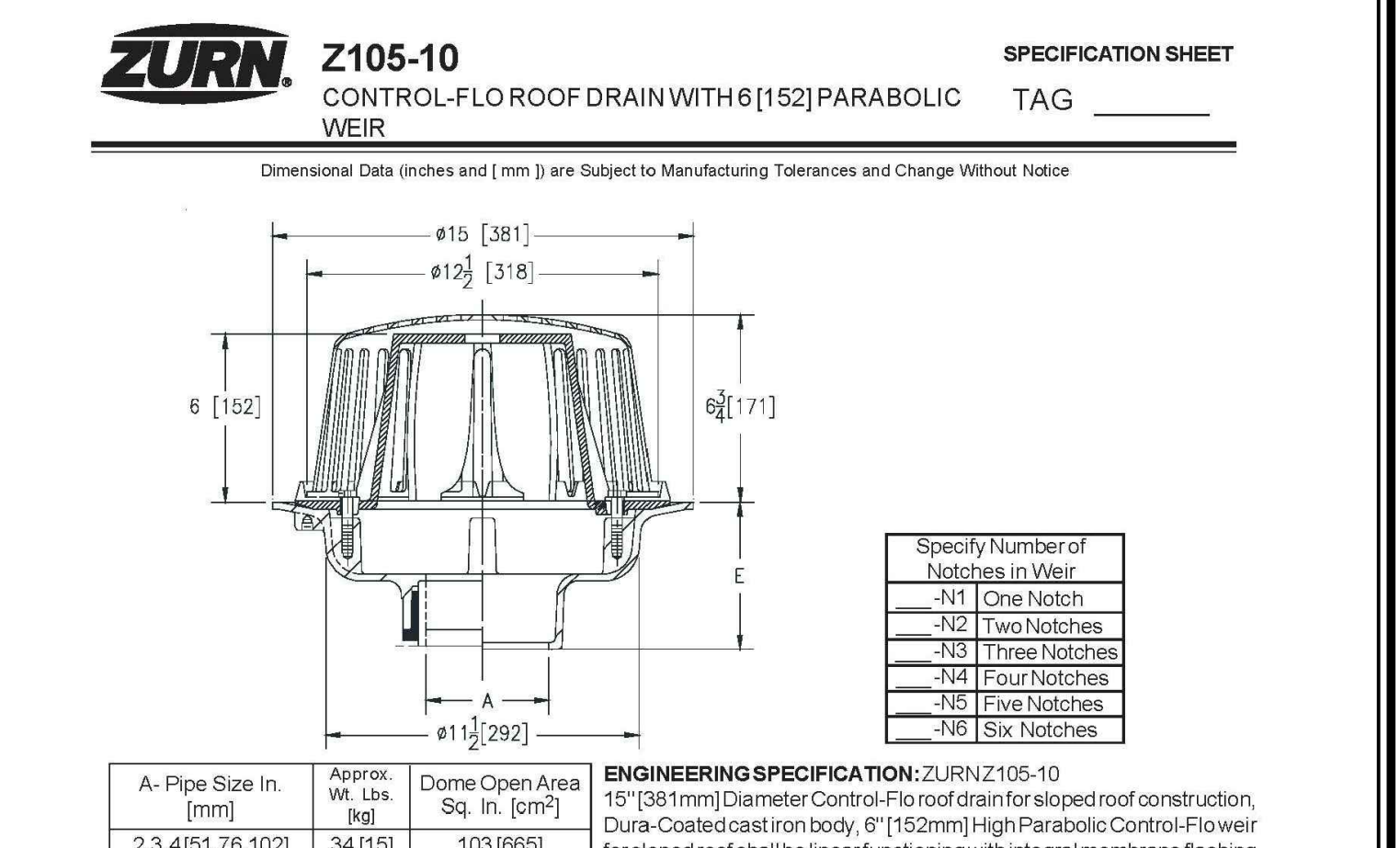
10 C4 LONGITUDINAL SECTION ROOF DRAIN FOR BLUE ROOF DETAIL
NOT TO SCALE



12 C4 CROSS SECTION CONCRETE WALK DETAIL
NOT TO SCALE



3 C4 STREET RESTORATION ASPHALT PAVEMENT DETAIL
NOT TO SCALE



ZURN Z105-10 CONTROL-FLO ROOF DRAIN WITH 6[152] PARABOLIC WEIR

Dimensional Data (inches and [mm]) are Subject to Manufacturing Tolerances and Change Without Notice

PIPE SIZE	APPROX. W. LBS. [kg]	DOME OPEN AREA SQ. IN. [CMF]	OUTLET	BODY HT. DIM.
3, 4 [51, 76, 102]	34 [15]	103 [665]	IC Inside Caulk	5-1/4 [133]
2, 3, 4 [51, 76, 102]			NH No-Hub	5-1/4 [133]
2, 3, 4 [51, 76, 102]			NL Neo-Loc	4-9/16 [116]

ENGINEERING SPECIFICATION: ZURN Z105-10 15" [381mm] Diameter Control-Flo roof drain for sloped roof construction, Dura-Coated cast iron body, 6" [152mm] High Parabolic Control-Flo weir for sloped roof shall be linear functioning with integral membrane flashing clamp/gravel guard. All data shall be verified proportional to flow rates. Each notch will allow 10 GPM of flow per inch of rainwater build up above the drain.

OPTIONS: (Check/specify appropriate options)

PREFIXES: ZA D.C.C.I. Body with 6-3/4 [171] High Aluminum Dome; ZC D.C.C.I. Body with 6-3/4 [171] High Cast Iron Dome*

SUFFIXES: C Underdeck Clamp; DP Top-Set Deck Plate (Replaces both C & R); E Static Extension 1 [25] thru 4 [102] (Specify Ht.); EA Adjustable Extension Assembly 2-1/8 [54] thru 3-1/2 [89]; G Galvanized Cast Iron; R Roof Sump Receiver; TC Neo-Loc Test Cap Gasket (2,3,4 [51,76,102] NL Bottom Outlet Only); VP Vandal Proof Secured Top

* Regularly furnished unless otherwise specified.

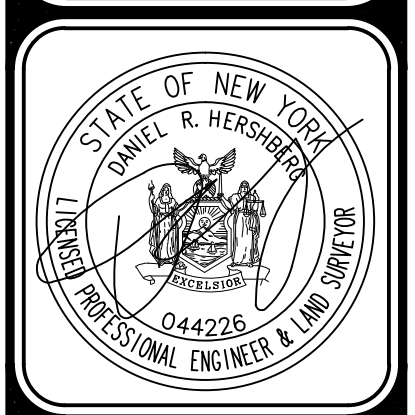
Zurn Industries, LLC | Specification Drainage Operation
1801 Pittsburgh Avenue, Erie, PA, U.S.A. 16502 Ph: 855-665-9878, Fax: 814-454-7929
In Canada | Zurn Industries Limited
3544 Nashua Drive, Mississauga, Ontario L4V 1L2 Ph: 905-405-8272, Fax: 905-405-1292
www.zurn.com

Rev. B
Date: 09/26/2017
C.N. No. 138160
Prod. | Dwg. No. Z105-10

10 C4 ROOF DRAIN FOR BLUE ROOF DETAIL
NOT TO SCALE

HERSHBERG & HERSHBERG
Consulting Engineers and Land Surveyors
18 Locust Street
Albany, New York 12203

ALTERATION OF THIS DOCUMENT EXCEPT BY A LICENSED PROFESSIONAL ENGINEER OR LAND SURVEYOR, IS ILLEGAL



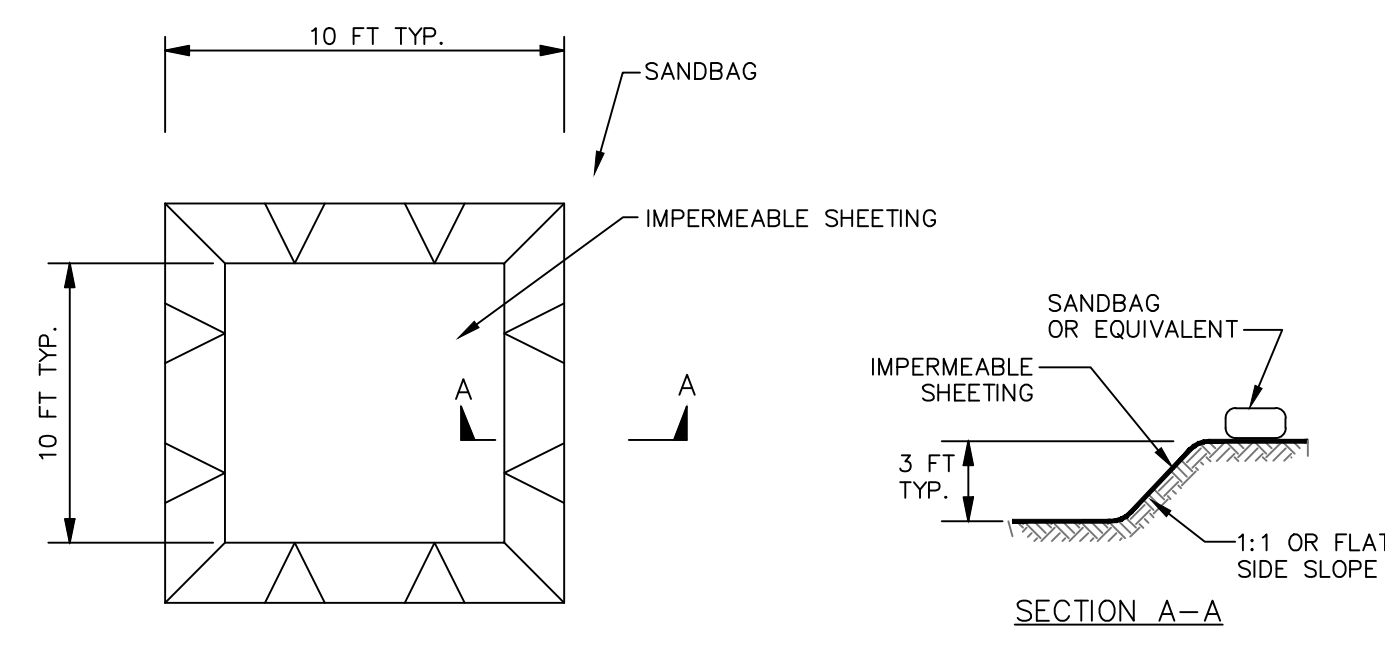
DATE	REVISIONS
10/4/19	GENERAL COMMENTS
12/2/19	GENERAL REVISIONS
12/19/19	ACCESS REVISED
4/7/20	STREET RESTORATION DET. REVISED
7/21/20	

REVISIONS

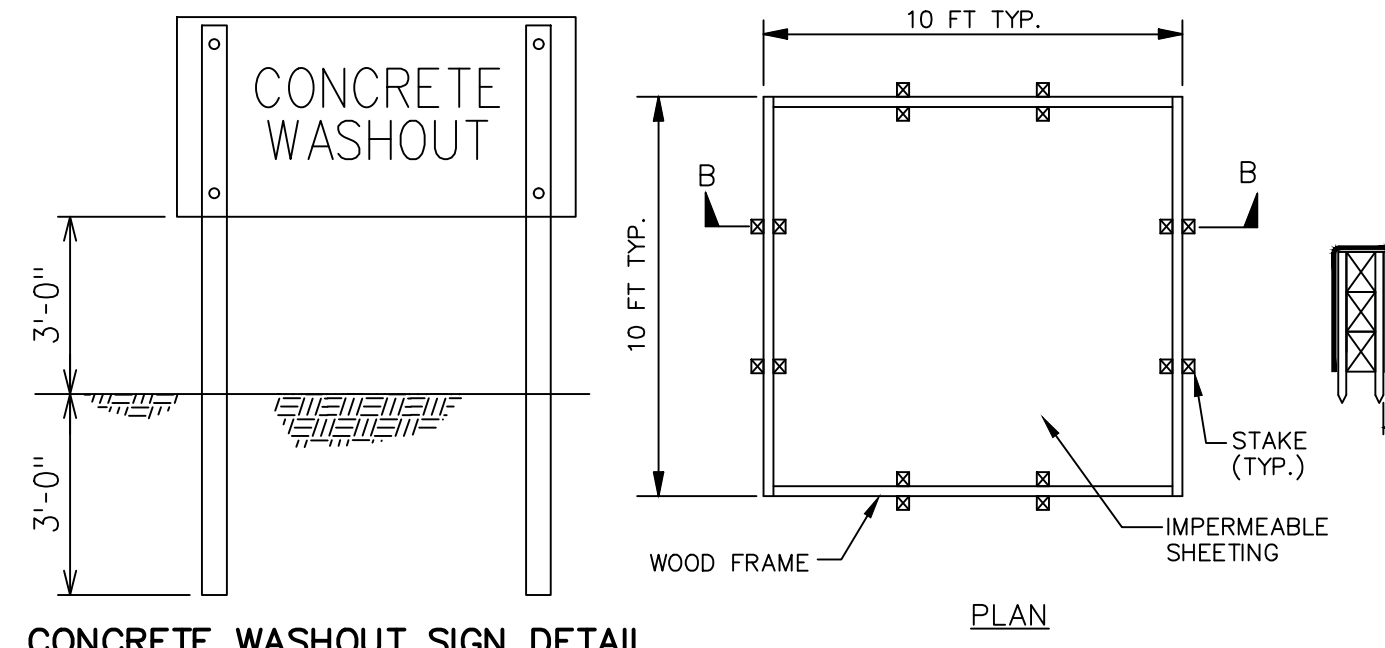
DETAILS
PROPOSED APARTMENTS
#11 SPRING STREET
ALBANY, NEW YORK

DATE: 9/20/19
CHK: DRH
BY: AS
SCALE: N/S
FILE: 190218

C4

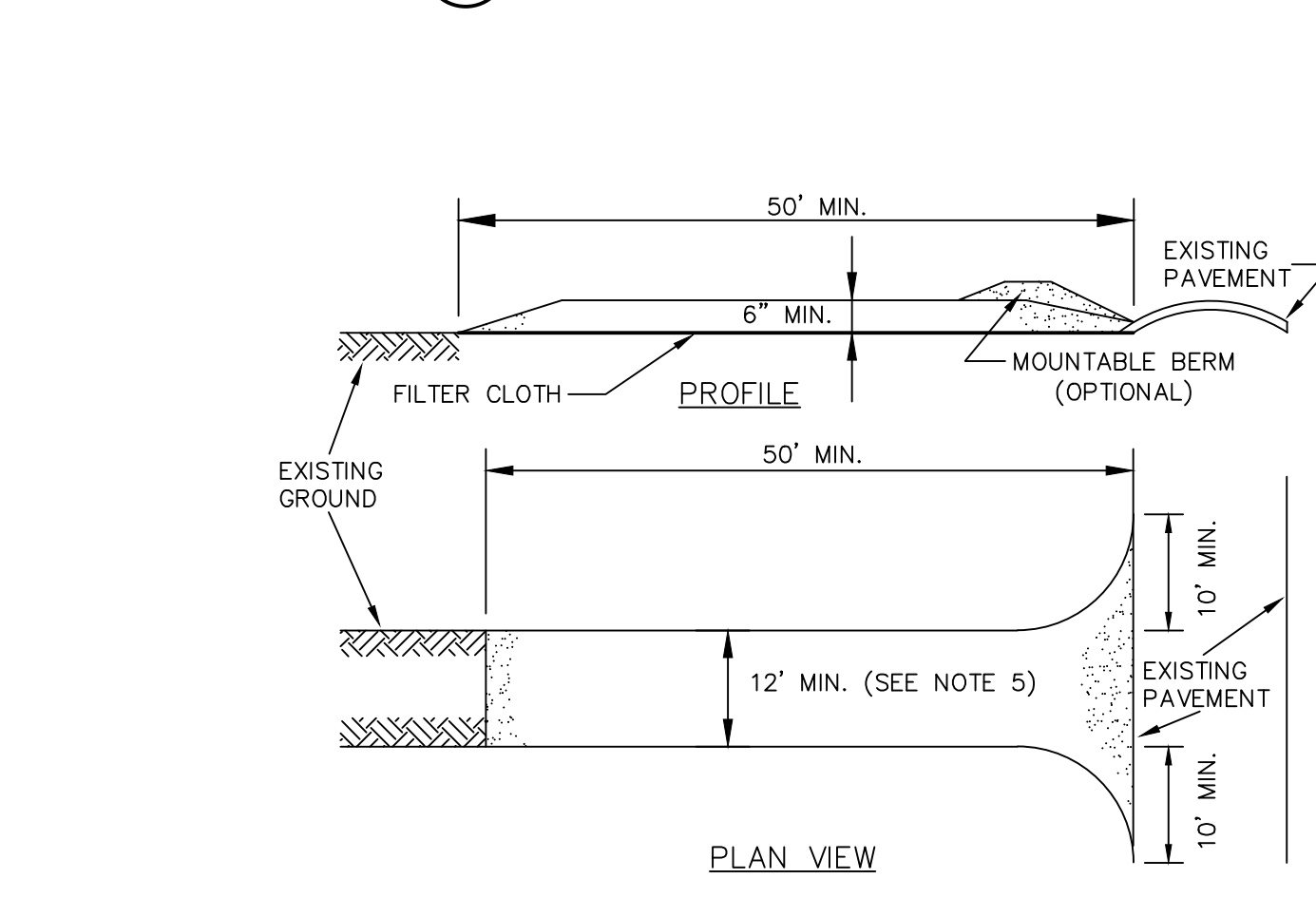


PLAN
EXCAVATED WASHOUT STRUCTURE



CONCRETE WASHOUT SIGN DETAIL
(OR EQUIVALENT) WASHOUT STRUCTURE WITH WOOD PLANKS

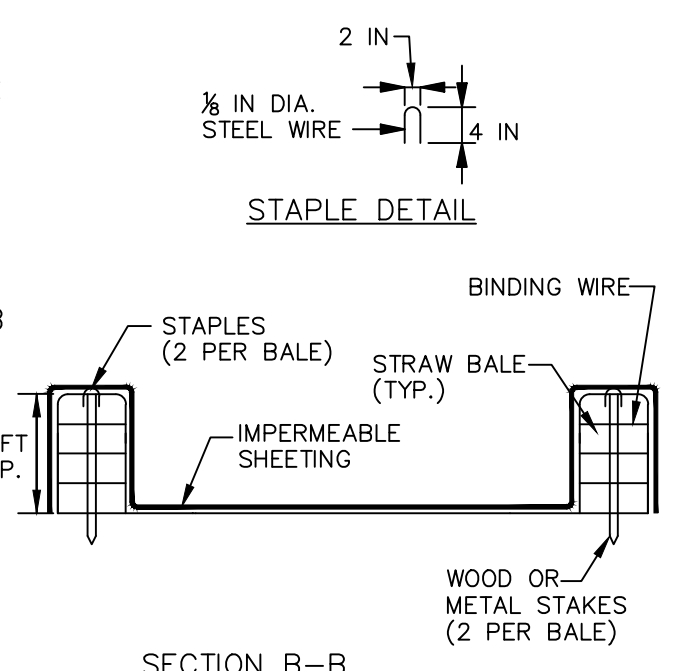
1
C5 ONSITE CONCRETE TRUCK WASHOUT STRUCTURE DETAIL



PLAN VIEW

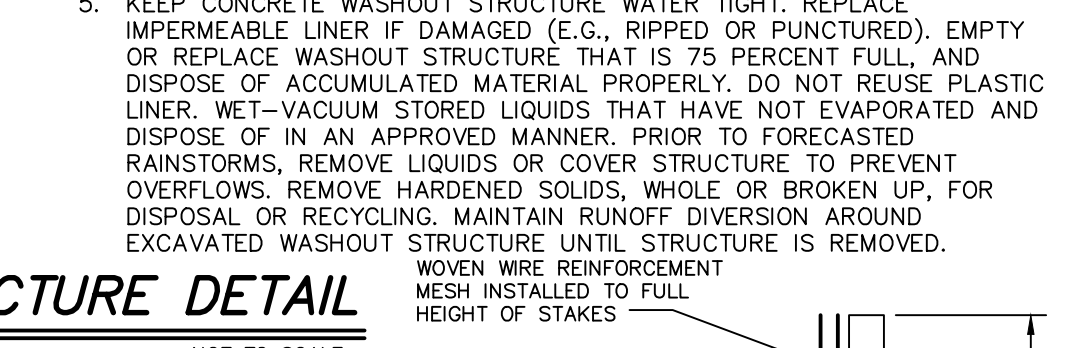
- CONSTRUCTION SPECIFICATIONS:**
- INSTALL CONSTRUCTION ACCESS IN ACCORDANCE WITH "NEW YORK STANDARDS AND SPECIFICATIONS FOR EROSION AND SEDIMENT CONTROL", SECTION 7A.
 - STONE SIZE - USE 2" STONE, OR RECLAIMED OR RECYCLED CONCRETE EQUIVALENT.
 - LENGTH - NOT LESS THAN 50 FEET (EXCEPT ON A SINGLE RESIDENCE LOT WHERE A 30 FOOT MINIMUM LENGTH WOULD APPLY).
 - THICKNESS- NOT LESS THAN (6) INCHES.
 - WIDTH - TWELVE (12) FOOT MINIMUM, BUT NOT LESS THAN THE FULL WIDTH AT POINTS WHERE INGRESS OR EGRESS OCCURS. IF CONSTRUCTED AS THE ONLY ENTRANCE TO THE SITE, WIDTH SHALL BE TWENTY-FOUR (24) FEET.
 - STABILIZATION FABRIC - WILL BE PLACED OVER THE ENTIRE AREA PRIOR TO PLACING OF STONE.
 - SURFACE WATER - ALL SURFACE WATER FLOWING OR DIVERTED TOWARD CONSTRUCTION ENTRANCES SHALL BE PIPED ACROSS THE ENTRANCE. IF PIPING IS IMPRACTICAL, A MOUNTABLE BERM WITH 5:1 SLOPES WILL BE PERMITTED.
 - MAINTENANCE - THE ACCESS SHALL BE MAINTAINED IN A CONDITION WHICH WILL PREVENT TRACKING OR FLOWING OF SEDIMENT ONTO PUBLIC RIGHTS-OF-WAY. ALL SEDIMENT SPILLED, DROPPED, WASHED OR TRACKED ONTO PUBLIC RIGHTS-OF-WAY MUST BE REMOVED IMMEDIATELY.
 - WHEN WASHING IS REQUIRED, IT SHALL BE DONE ON AN AREA STABILIZED WITH STONE AND WHICH DRAINS ONTO AN APPROVED SEDIMENT TRAPPING DEVICE.
 - PERIODIC INSPECTION AND NEEDED MAINTENANCE SHALL BE PROVIDED AFTER EACH RAIN.

2
C5 STABILIZED CONSTRUCTION ACCESS DETAIL

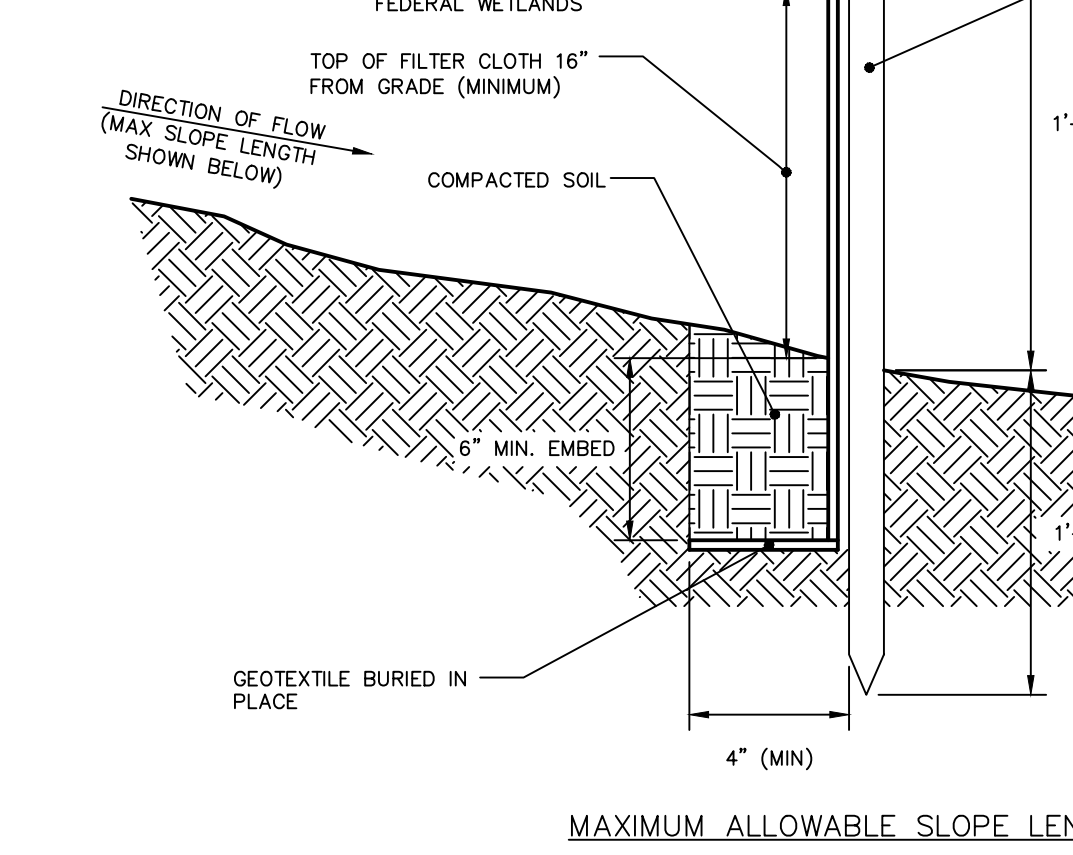


PLAN
SECTION B-B
WASHOUT STRUCTURE WITH STRAW BALES

- CONSTRUCTION SPECIFICATIONS**
- LOCATE WASHOUT STRUCTURE A MINIMUM OF 50 FEET AWAY FROM OPEN CHANNELS, STORM DRAIN INLETS, SENSITIVE AREAS, WETLANDS, BUFFERS AND WATER COURSES AND AWAY FROM CONSTRUCTION TRAFFIC.
 - SIZE WASHOUT STRUCTURE FOR VOLUME NECESSARY TO CONTAIN WASH WATER AND SOLIDS AND MAINTAIN AT LEAST 4 INCHES OF FREEBOARD. TYPICAL DIMENSIONS ARE 10 FEET X 10 FEET X 3 FEET DEEP.
 - PREPARE SOIL BASE FREE OF ROCKS OR OTHER DEBRIS THAT MAY CAUSE TEARS OR HOLES IN THE LINER. FOR LINER, USE 10 MIL OR THICKER VULCANIZING RESISTANT, IMPERMEABLE SHEETING, FREE OF HOLES AND TEARS OR OTHER DEFECTS THAT COMPROMISE IMPERMEABILITY OF THE MATERIAL.
 - PROVIDE A SIGN FOR THE WASHOUT IN CLOSE PROXIMITY TO THE FACILITY.
 - KEEP CONCRETE WASHOUT STRUCTURE WATER TIGHT. REPLACE IMPERMEABLE LINER IF DAMAGED (E.G., RIPPED OR PUNCTURED). EMPTY OR REPLACE WASHOUT STRUCTURE THAT IS 75 PERCENT FULL, AND DISPOSE OF ACCUMULATED MATERIAL PROPERLY. DO NOT REUSE PLASTIC LINER. WET-VACUUM STORED LIQUIDS THAT HAVE NOT EVAPORATED AND DISPOSE OF IN AN APPROVED MANNER. PRIOR TO FORECASTED RAINSTORMS, REMOVE LIQUIDS OR COVER STRUCTURE TO PREVENT OVERFLOWS. REMOVE HARDENED SOLIDS, WHOLE OR BROKEN UP, FOR DISPOSAL OR RECYCLING. MAINTAIN RUNOFF DIVERSION AROUND EXCAVATED WASHOUT STRUCTURE UNTIL STRUCTURE IS REMOVED.



3
C5 SILT FENCE DETAIL



MAXIMUM ALLOWABLE SLOPE LENGTH

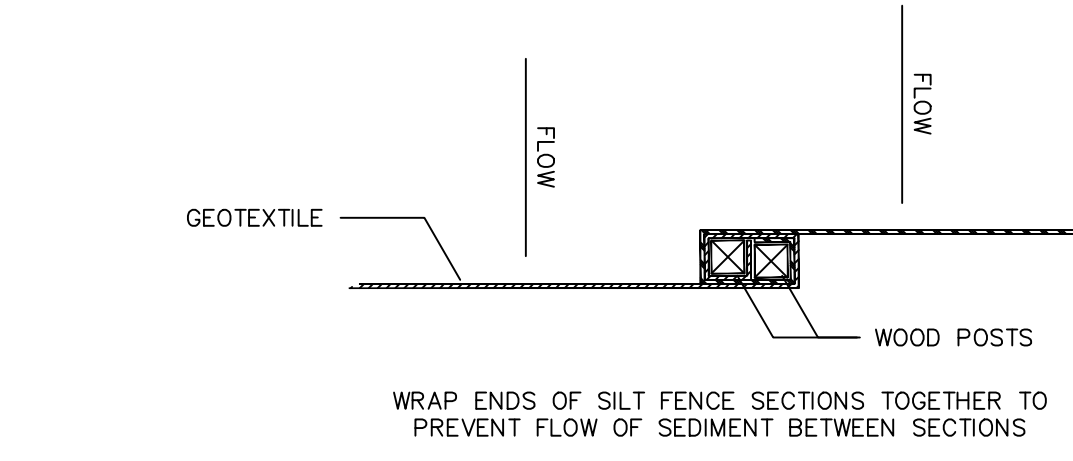
MAXIMUM ALLOWABLE SLOPE LENGTHS CONTRIBUTING RUNOFF TO A SECTION OF SILT FENCE SHALL BE AS FOLLOWS:

SLOPE STEEPNESS:	MAX. SLOPE LENGTH:
1:2	25 FT
1:3	50 FT
1:4	75 FT
1:5 OR FLATTER	100 FT

NOTE: MAXIMUM DRAINAGE AREA FOR OVERLAND FLOW TO SILT FENCE SECTION SHALL NOT EXCEED 1/4 ACRE PER 100 FT OF FENCE. CONCENTRATED DISCHARGE OF SEDIMENT LADEN WATER SHALL NOT BE ALLOWED TO FLOW DIRECTLY TO THE FENCING.

CONSTRUCTION NOTES FOR FABRICATED SILT FENCE

- INSTALL SILT FENCE IN ACCORDANCE WITH "THE NEW YORK STANDARDS AND SPECIFICATIONS FOR EROSION AND SEDIMENT CONTROL", SECTION 7A.
- WOVEN WIRE FENCE SHALL BE 12 1/2 GA., 6" MAXIMUM MESH OPENING, FASTENED SECURELY TO FENCE POSTS WITH WIRE TIES OR STAPLES.
- FILTER CLOTH TO BE TO BE FASTENED SECURELY TO WOVEN WIRE FENCE WITH TIES SPACED EVERY 24" AT TOP AND MID SECTION.
- WHEN TWO SECTIONS OF FILTER CLOTH ADJOIN EACH OTHER THEY SHALL BE WRAPPED TOGETHER PER SILT FENCE JOINT DETAIL ON THIS SHEET.
- MAINTENANCE SHALL BE PERFORMED AS NEEDED AND SEDIMENT REMOVED WHEN ACCUMULATION REACHES 1/2 OF DESIGN CAPACITY OF FENCE (1/2 HEIGHT OF FILTER FABRIC) OR WHEN "BULGES" DEVELOP IN FENCING.



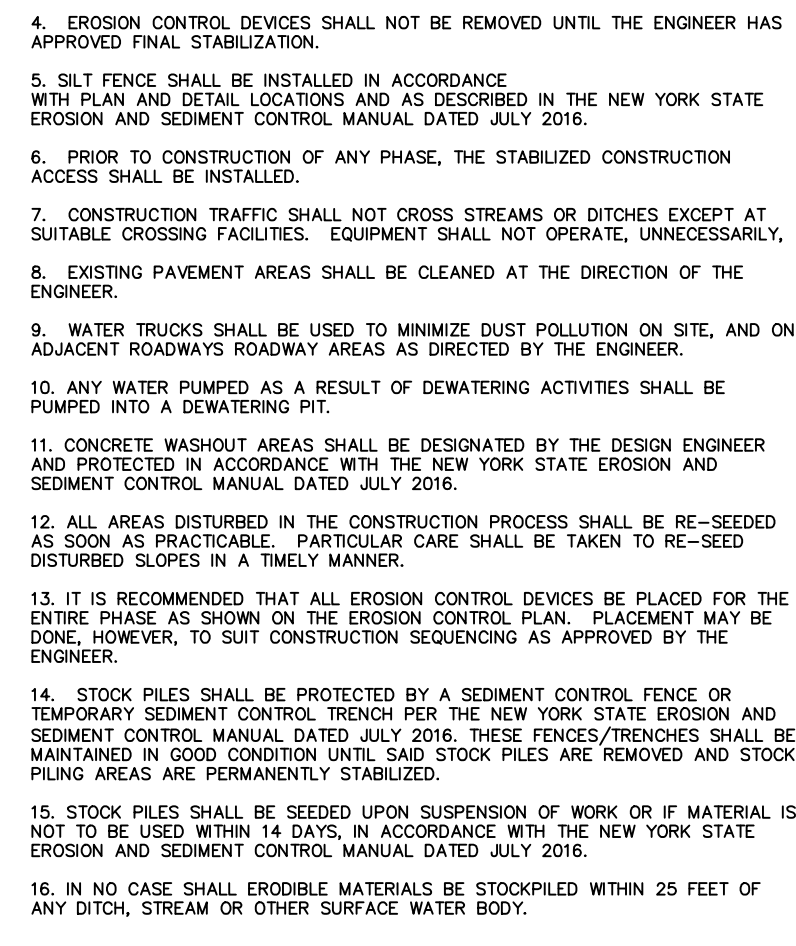
SILT FENCE JOINT DETAIL

3
C5 SILT FENCE DETAIL

NOT TO SCALE

TEMPORARY EROSION AND SEDIMENT CONTROL NOTES

- EROSION AND SEDIMENT CONTROL MEASURES SHALL BE IMPLEMENTED IN ACCORDANCE WITH THE JULY 2016 "NEW YORK STANDARDS AND SPECIFICATIONS FOR EROSION AND SEDIMENT CONTROL" (aka: THE BLUE BOOK) EROSION CONTROL DEVICES SHALL BE INSTALLED PRIOR TO ANY CONSTRUCTION ACTIVITIES.
- IT IS THE INTENT OF THESE PLANS AND NOTES TO BE USED AS A GUIDE BY THE CONTRACTOR TO ENSURE THAT NO ERODED MATERIAL MIGRATES FROM THE SITE OR ENTERS ANY WATER COURSE. IT IS THE CONTRACTOR'S RESPONSIBILITY TO ENSURE THAT THIS GOAL IS MET BY IMPLEMENTING THESE PLANS AND ANY ADDITIONAL MEASURES THAT MAY BE NECESSARY. THESE PLANS AND ANY ADDITIONAL MEASURES SHALL BE MAINTAINED IN GOOD CONDITION AND REINFORCED, EXTENDED, REPAIRED, RE-SEEDED AND PROTECTED FROM FURTHER EROSION UNTIL SEDIMENT ACCUMULATED SHALL BE REMOVED AND CONTAINED IN APPROPRIATE SPILL AREAS. WATER SHALL BE APPLIED TO NEWLY SEEDD AREAS AS NEEDED UNTIL GRASS COVER IS WELL ESTABLISHED. DURING THESE PERIODIC INSPECTIONS, THE FOLLOWING ITEMS SHOULD BE PAID PARTICULAR ATTENTION:
 - SILT FENCING SHALL BE INSPECTED REGULARLY FOR UNDERMINING AND DETERIORATION.
 - SEEDD/MULCHED AREAS SHALL BE INSPECTED REGULARLY TO SEE THAT A GOOD STAND IS MAINTAINED. AREAS SHALL BE REPAIRED AS NECESSARY.
- THE DEVELOPER/CONTRACTOR OR HIS BUILDER SHALL INSPECT AND MAINTAIN EROSION CONTROL MEASURES WEEKLY AND AFTER EACH RAINFALL EVENT THROUGH THE ENTIRE DEVELOPMENT PROCESS TO ASSURE THAT EROSION CONTROL BARRIERS SHALL BE MAINTAINED IN GOOD CONDITION AND REINFORCED, EXTENDED, REPAIRED, RE-SEEDED AND PROTECTED FROM FURTHER EROSION UNTIL SEDIMENT ACCUMULATED SHALL BE REMOVED AND CONTAINED IN APPROPRIATE SPILL AREAS. WATER SHALL BE APPLIED TO NEWLY SEEDD AREAS AS NEEDED UNTIL GRASS COVER IS WELL ESTABLISHED. DURING THESE PERIODIC INSPECTIONS, THE FOLLOWING ITEMS SHOULD BE PAID PARTICULAR ATTENTION:
 - SILT FENCING SHALL BE INSPECTED REGULARLY FOR UNDERMINING AND DETERIORATION.
 - SEEDD/MULCHED AREAS SHALL BE INSPECTED REGULARLY TO SEE THAT A GOOD STAND IS MAINTAINED. AREAS SHALL BE REPAIRED AS NECESSARY.
- EROSION CONTROL DEVICES SHALL NOT BE REMOVED UNTIL THE ENGINEER HAS APPROVED FINAL STABILIZATION.
- SILT FENCE SHALL BE INSTALLED IN ACCORDANCE WITH PLAN AND DETAIL LOCATIONS AND AS DESCRIBED IN THE NEW YORK STATE EROSION AND SEDIMENT CONTROL MANUAL DATED JULY 2016.
- PRIOR TO CONSTRUCTION OF ANY PHASE, THE STABILIZED CONSTRUCTION ACCESS SHALL BE INSTALLED.
- CONSTRUCTION TRAFFIC SHALL NOT CROSS STREAMS OR DITCHES EXCEPT AT SUITABLE CROSSING FACILITIES. EQUIPMENT SHALL NOT OPERATE UNNECESSARILY.
- EXISTING PAVEMENT AREAS SHALL BE CLEANED AT THE DIRECTION OF THE ENGINEER.
- WATER TRUCKS SHALL BE USED TO MINIMIZE DUST POLLUTION ON SITE, AND ON ADJACENT ROADWAYS ROADWAY AREAS AS DIRECTED BY THE ENGINEER.
- ANY WATER PUMPED AS A RESULT OF DEWATERING ACTIVITIES SHALL BE PUMPED INTO A DEWATERING PIT.
- CONCRETE WASHOUT AREAS SHALL BE DESIGNATED BY THE DESIGN ENGINEER AND PROTECTED IN ACCORDANCE WITH THE NEW YORK STATE EROSION AND SEDIMENT CONTROL MANUAL DATED JULY 2016.
- ALL AREAS DISTURBED IN THE CONSTRUCTION PROCESS SHALL BE RE-SEEDD AS SOON AS PRACTICABLE. PARTICULAR CARE SHALL BE TAKEN TO RE-SEED DISTURBED SLOPES IN A TIMELY MANNER.
- IT IS RECOMMENDED THAT ALL EROSION CONTROL DEVICES BE PLACED FOR THE ENTIRE PHASE AS SHOWN ON THE EROSION CONTROL PLAN. FENCING FOR THE ENTIRE PHASE AS SHOWN ON THE EROSION CONTROL PLAN. FENCING FOR THE ENTIRE PHASE AS SHOWN ON THE EROSION CONTROL PLAN.
- STOCK PILES SHALL BE PROTECTED BY A SEDIMENT CONTROL FENCE OR TEMPORARY SEDIMENT CONTROL TRENCH PER THE NEW YORK STATE EROSION AND SEDIMENT CONTROL MANUAL DATED JULY 2016. THESE FENCES/TRENCHES SHALL BE MAINTAINED IN GOOD CONDITION UNTIL SAID STOCK PILES ARE REMOVED AND STOCK PILING AREAS ARE PERMANENTLY STABILIZED.
- STOCK PILES SHALL BE SEEDD UPON SUSPENSION OF WORK OR IF MATERIAL IS NOT TO BE USED WITHIN 14 DAYS, IN ACCORDANCE WITH THE NEW YORK STATE EROSION AND SEDIMENT CONTROL MANUAL DATED JULY 2016.
- IN NO CASE SHALL ERODIBLE MATERIALS BE STOCKPILED WITHIN 25 FEET OF ANY DITCH, STREAM OR OTHER SURFACE WATER BODY.



STAPLE DETAIL



SECTION B-B

CONSTRUCTION SEQUENCING & SEDIMENTATION AND EROSION CONTROL DURING CONSTRUCTION

The construction sequence for this project will be governed by the erosion and sediment control plan. Approximate timing is indicated where applicable in red following steps:

- Prior to commencement of any work this SWPPP**
- Assure that copy of SWMR & SWPPP is on site. ON COMMENCEMENT
 - Establish Qualified individual who will be performing site inspection. ON COMMENCEMENT
 - SWPPP Inspections must be performed by the qualified professional must be submitted to the MSA Coordinator. From Commencement until filing the Notice of Termination. ON COMMENCEMENT
 - Establish Trained Contractor who will be on site. At least one Trained Contractor must be on site whenever ground disturbing activities are being undertaken. ON COMMENCEMENT
 - Establish contact person for Contractor/Subcontractor. ON COMMENCEMENT
 - IN CASE OF ANY SPILLS OF MATERIALS ON SITE, EXECUTE SPILL RESPONSE PLAN CONTAINED IN APPENDIX #9**

Construction Sequence

- Commence work on site. WITHIN 10 DAYS OF PRE-CONSTRUCTION MEETING
- Install silt fence or other controls as indicated on the plan. PRIOR TO COMMENCEMENT OF ANY GRADING - FENCE TO REMAIN IN PLACE UNTIL ALL AREAS ARE STABILIZED.
- Grade and prepare construction access. PRIOR TO COMMENCEMENT OF ANY GRADING - CONSTRUCTION ACCESS TO REMAIN IN PLACE UNTIL ALL AREAS ARE STABILIZED.
- Commence installation of the concrete washout tank and drop inlet protection. PRIOR TO BUILDING EXCAVATION.
- The existing pavement must be kept swept clean to avoid tracking materials onto any streets. CONTINUOUSLY FROM INCEPTION TO COMPLETION OF STABILIZATION OR FILING OF NOTICE OF TERMINATION.
- Maintain this area clean of debris and verify condition and safety of storage of materials listed below. Requires daily inspection. CONTINUOUSLY FROM INCEPTION TO FILING OF NOTICE OF TERMINATION.
- Any construction materials, chemicals or construction debris must be stored in sealed receptacles, trailers or buildings. Any storage piles of materials meant for installation (i.e., sand, etc) must be surrounded by sedimentation fence. The list of anticipated materials stored on site during construction is provided below and must be updated if any additional materials are utilized. CONTINUOUSLY FROM INCEPTION TO FILING OF NOTICE OF TERMINATION.
 - Select Fill
 - Rip-rip
 - Fencing Materials
 - Concrete Structures
 - Pipes
 - Solvents
 - Concrete for building
 - Roofing Materials for Building
 - Metal Materials for Building
 - Building Materials for Building
- MSDS sheets must be available on site for all materials used or imported to the site. CONTINUOUSLY FROM INCEPTION TO FILING OF NOTICE OF TERMINATION.
- Any chemical spills must be contained immediately on site and reported to NYSDEC. CONTINUOUSLY FROM INCEPTION TO FILING OF NOTICE OF TERMINATION.
- Oil and grease spills from equipment shall be treated immediately. CONTINUOUSLY FROM INCEPTION TO FILING OF NOTICE OF TERMINATION.
- Commence installation of the interception swale. PRIOR TO GRADING.
- Clean interception swale and as required. CONTINUOUSLY FROM INSTALLATION UNTIL FILING OF NOTICE OF TERMINATION.
- Install building, place pavement and prepare lawns and planters. PRIOR TO FILING OF NOTICE OF TERMINATION.
- Clean any downstream structures of any accumulated silt. PRIOR TO FILING OF NOTICE OF TERMINATION.
- Fine grade landscape beds. PRIOR TO FILING OF NOTICE OF TERMINATION.
- Place landscape materials. PRIOR TO FILING OF NOTICE OF TERMINATION.
- Seed and mulch. PRIOR TO FILING OF NOTICE OF TERMINATION.
- Obtain approval on Notice of Termination from MSA coordinator after site has achieved >80% grass cover. PRIOR TO FILING OF NOTICE OF TERMINATION.
- File NOTICE OF TERMINATION.

HOUSEKEEPING SECTION

- During construction any construction materials, chemicals or construction debris must be stored in sealed receptacles, trailers or buildings. Any storage piles of materials meant for installation (i.e., sand, etc) must be surrounded by sedimentation fence. The list of anticipated materials stored on site during construction is provided below and must be updated if any additional materials are utilized:
- Select Fill
 - Rip-rip
 - Fencing Materials
 - Concrete Structures
 - Pipes
 - Pipe Solvents
 - Concrete for building
 - Roofing Materials for Building
 - Building Materials for Building
- MSDS sheets must be available on site for all materials utilized for used or imported to the site. Any chemical spills must be contained immediately on site and reported to NYSDEC. Oil and grease spills from equipment shall be treated immediately.
- IN CASE OF ANY SPILLS OF MATERIALS ON SITE, EXECUTE SPILL RESPONSE PLAN CONTAINED IN APPENDIX #9**
- Oil and grease spills from equipment shall be treated immediately. Vehicle fueling must take place in designated area. Relocate designated fueling area when required. A concrete truck washout must be provided and used by all trucks washing out concrete. Pit must be maintained and pumped out regularly.
- After construction, materials and chemicals must be stored in sealed receptacles or in buildings. Daily inspection by trained individual shall be made by staff to ensure that materials listed below are properly stored. The list of anticipated materials stored on site after occupancy of the building and solar farm is provided below and must be updated if any additional materials are utilized:
- Cleaning Materials for Building

MSDS sheets must be available on site for all materials utilized for used or imported to the site. Any chemical spills must be contained immediately on site and reported to NYSDEC. Oil and grease spills from equipment shall be treated immediately.

EROSION AND SEDIMENT CONTROL NOTES

- ANY CONTRACTOR INVOLVED IN EARTHWORK ACTIVITIES, INCLUDING BUT NOT LIMITED TO: CLEARING, GRADING AND TRENCHING, SHALL REVIEW ALL PERMIT CONDITIONS AND CERTIFY UNDERSTANDING OF THESE CONDITIONS, IN WRITING. IT IS THE CONTRACTOR'S RESPONSIBILITY TO IMPLEMENT ALL EROSION CONTROLS DESCRIBED IN §9-01-15-002, AND IT IS NOT THE INTENT OF THESE DRAWINGS TO REPLACE OR DISMANTLE THE PERMIT REQUIREMENTS. THE CONTRACTOR SHALL REMAIN IN COMPLIANCE WITH THE PERMIT AT ALL TIMES.
- AT ALL TIMES SOIL DISTURBING ACTIVITIES SHALL REMAIN LESS THAN 1 ACRE. THE CONTRACTOR SHALL COORDINATE EARTHWORK ACTIVITIES AND IMPLEMENTATION OF SOIL STABILIZATION MEASURES TO ENSURE COMPLIANCE TO THIS PERMIT REQUIREMENT. THE SITE WILL BE MONITORED AT ALL TIMES TO ENSURE SOIL DISTURBANCE DOES NOT EXCEED 1 ACRE. IF THE SOIL DISTURBANCE EXCEEDS ONE ACRE AT ANY TIME, A STOP WORK ORDER WILL BE ISSUED UNTIL THE SITE RECEIVES COVERAGE UNDER SPDES GENERAL PERMIT FOR CONSTRUCTION ACTIVITY.
- THE CONTRACTOR SHALL MAINTAIN A CLEAN CONSTRUCTION AND EQUIPMENT ENTRANCE WHENEVER PRACTICABLE.
- DISTURBED AREAS SHALL BE STABILIZED WITHIN 14 DAYS OF COMPLETION OR SUSPENSION OF GRADING OPERATIONS.
- INSTALL TEMPORARY & PERMANENT SEEDING IN ACCORDANCE WITH THE NEW YORK GUIDELINES FOR URBAN EROSION AND SEDIMENT CONTROL. STANDARD AND SPECIFICATION FOR TEMPORARY CONSTRUCTION AREA SEEDING AND FOR MULCHING.

STANDARD AND SPECIFICATIONS FOR TEMPORARY CONSTRUCTION AREA PLANTING, PAGE 4.3B.

WATER MANAGEMENT PRACTICES MUST BE INSTALLED AS APPROPRIATE FOR SITE CONDITIONS. THE AREA MUST BE ROUGH GRADED AND SLOPES PHYSICALLY STABLE. LARGE DEBRIS AND ROCKS ARE USUALLY REMOVED. SEEDING MUST BE SEEDD WITHIN 24 HOURS OF DISTURBANCE OR SCARIFICATION OF THE SOIL SURFACE WILL BE NECESSARY PRIOR TO SEEDING.

FERTILIZER OR LIME ARE NOT TYPICALLY USED FOR TEMPORARY SEEDINGS.

 - SPRING OR SUMMER OR EARLY FALL, THEN SEED THE AREA WITH RYEGRASS (ANNUAL OR PERENNIAL) AT 30 LBS. PER ACRE. (APPROXIMATELY 0.7 LB./1000 SQ. FT. OR USE 1 LB./1000 SQ. FT.)
 - LATE FALL OR EARLY WINTER, THEN SEED CERTIFIED "ARODSTOCK" WINTER RYE (CEREAL RYE) AT 1000 LBS. PER ACRE (2.5 LBS./1000 SQ. FT.).

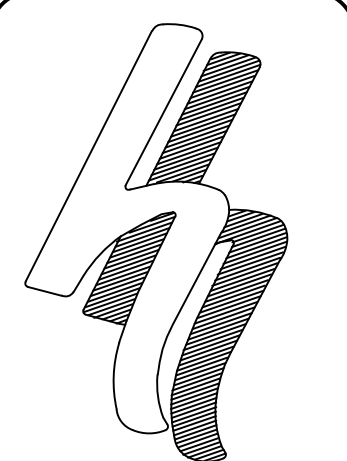
ANY SEEDING METHOD MAY BE USED THAT WILL PROVIDE UNIFORM APPLICATION OF SEED TO THE AREA AND RESULT IN RELATIVELY GOOD SOIL TO SEED CONTACT.

MULCH THE AREA WITH HAY OR STRAW AT 2 TONS/ACRE (APPROX. 90 LBS./1000 SQ. FT. OR 2 BALES). QUALITY OF HAY OR STRAW MULCH ALLOWABLE WILL BE DETERMINED BASED ON LONG TERM USE AND VISUAL CONCERNS. MULCH ANCHORING WILL BE REQUIRED WHERE WIND OR AREAS OF CONCENTRATED WATER ARE OF CONCERN. WOOD FIBER HYDROGEL OR OTHER SPRAYABLE PRODUCTS APPROVED FOR EROSION CONTROL (NYLON WEB OR MESH) MAY BE USED IF APPLIED ACCORDING TO MANUFACTURER'S SPECIFICATIONS. CAUTION IS ADVISED WHEN USING NYLON OR OTHER SYNTHETIC PRODUCTS. THEY MAY BE DIFFICULT TO REMOVE PRIOR TO FINAL SEEDING AND CAN BE A HAZARD TO YOUNG WILDLIFE SPECIES.

MULCH ANCHORING GUIDE - TABLE 4.3, PAGE 4.41:

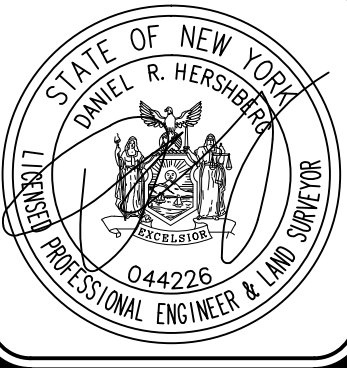
ANCHORING METHOD OR MATERIAL	KIND OF MULCH TO BE ANCHORED	HOW TO APPLY
PEG AND TWINE	HAY OR STRAW	AFTER MULCHING, DIVIDE AREAS INTO BLOCKS APPROXIMATELY 1 SQ. YD. IN SIZE. DRIVE 4-6 PEGS PER BLOCK TO WITHIN 2" TO 3" OF SOIL SURFACE. SECURE MULCH TO SURFACE BY STRETCHING TWINE BETWEEN PEGS IN CRISS-CROSS PATTERN ON SECURE TIME AROUND EACH PEG WITH 2 OR MORE TIGHT TURNS. DRIVE PEGS FLUSH WITH SOIL. DRIVING STAKES INTO GROUND TIGHTENS THE TWINE.
MULCH NETTING	HAY OR STRAW	STAPLE THE LIGHT-WEIGHT PAPER, JUTE, WOOD FIBER, OR PLASTIC NETTINGS TO SOIL SURFACE ACCORDING TO MANUFACTURER'S RECOMMENDATIONS. SHOULD BE BIODEGRADABLE. MOST PRODUCTS ARE NOT SUITABLE FOR FOOT TRAFFIC.
WOOD CELLULOSE FIBER	HAY OR STRAW	APPLY WITH HYDROSEEDER IMMEDIATELY AFTER MULCHING. USE 500 LBS. WOOD FIBER PER ACRE. SOME PRODUCTS CONTAIN AN ADHESIVE MATERIAL ("TACKIFIER"), POSSIBLY ADVANTAGEOUS.
MULCH ANCHORING TOOL	HAY OR STRAW	APPLY MULCH AND PULL A MULCH ANCHORING TOOL (BLUNT, STRAIGHT CROSS) OVER MULCH AS NEAR TO THE CONTOUR AS POSSIBLE. MULCH MATERIAL SHOULD BE "TUCKED" INTO SOIL SURFACE ABOUT 3".
TACKIFIER	HAY OR STRAW	MIX AND APPLY POLYMERIC AND GUM TACKIFIERS ACCORDING TO MANUFACTURER'S INSTRUCTIONS. AVOID APPLICATION DURING RAIN. A 24-HOUR CURING PERIOD AND A SOIL TEMPERATURE HIGHER THAN 40° FAHRENHEIT ARE REQUIRED.

- INSTALL PERMANENT RIP-RAP AT ALL PIPE END SECTIONS AT TIME OF INSTALLATION OF PIPE.
- SEE REMAINDER OF PLANS FOR PERMANENT IMPROVEMENTS. PERMANENT IMPROVEMENTS SHOWN ON THIS PLAN ARE FOR REFERENCE ONLY.
- PAVED AREAS ARE TO BE SWEEP DAILY TO REMOVE ANY SEDIMENT AND ALL NEWLY PAVED AREAS SHALL BE DIRECTED TO THE TEMPORARY OR FINAL SEDIMENT CONTROL BASINS.



HERSHBERG & HERSHBERG
Consulting Engineers and Land Surveyors
18 Locust Street
Albany, New York 12203

ALTERATION OF THIS DOCUMENT EXCEPT BY A LICENSED PROFESSIONAL ENGINEER OR LAND SURVEYOR, IS ILLEGAL.

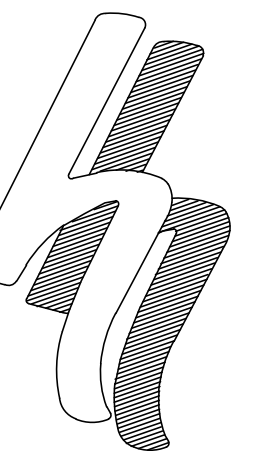
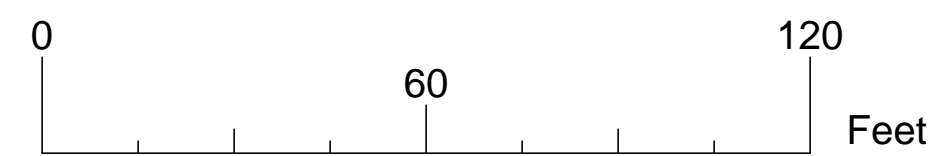


DATE	REVISIONS
10/4/19	COMMENT LETTERS
12/2/19	AND COMMENTS
12/19/19	GENERAL REVISIONS
4/7/20	ACCESS REVISED

EROSION AND SEDIMENT CONTROL DETAILS
PROPOSED APARTMENTS
#11 SPRING STREET
ALBANY, NEW YORK

SCALE: NYS
DATE: 9/20/19
CHK: DRH
BY: AS
FILE: 190219

C5



**HERSHBERG
&
HERSHBERG**
Consulting Engineers
and Land Surveyors

18 Locust Street
Albany, New York 12203

ALTERATION OF THIS DOCUMENT EXCEPT BY A LICENSED PROFESSIONAL ENGINEER OR LAND SURVEYOR, IS ILLEGAL.



REVISIONS	DATE	REMARKS
COMMENT LETTERS AND COMMENTS	10/4/19	
GENERAL REVISIONS	12/2/19	
ACCESS REVISION	12/19/19	
	4/7/20	

**MAINTENANCE AND PROTECTION OF TRAFFIC PLAN
PROPOSED APARTMENTS
#11 SPRING STREET
ALBANY, NEW YORK**

C6

FILE: 190218 SCALE: 1"=30' BY: AS CHK: DRH DATE: 9/20/19 190218-LDWG