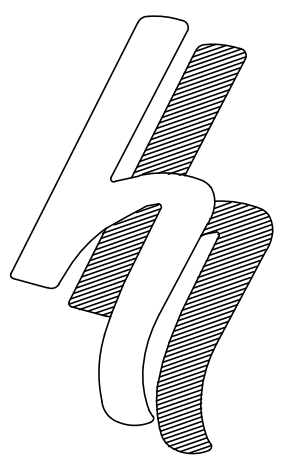
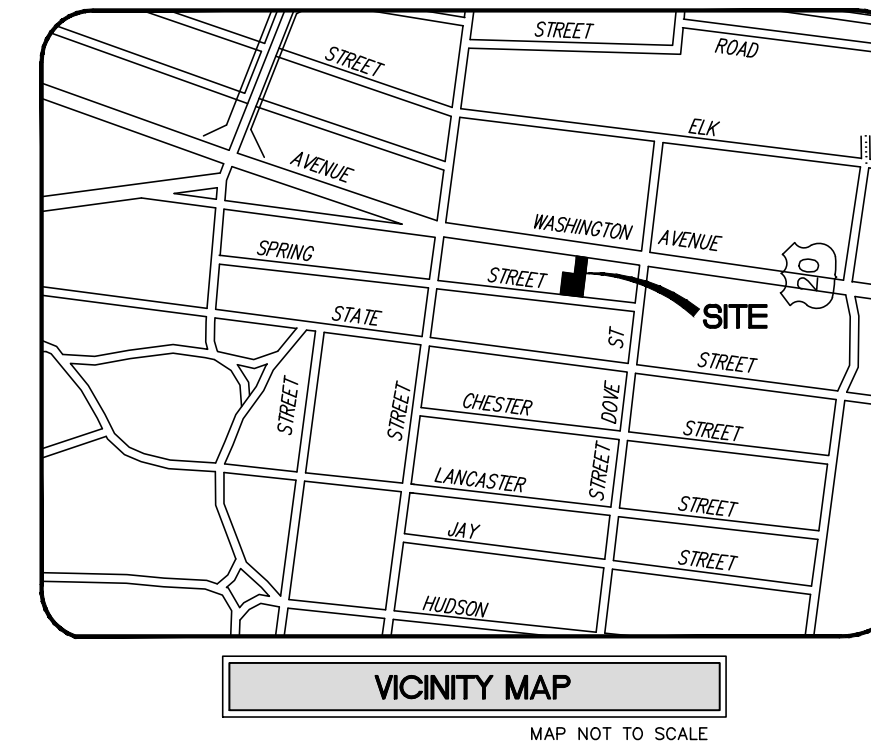
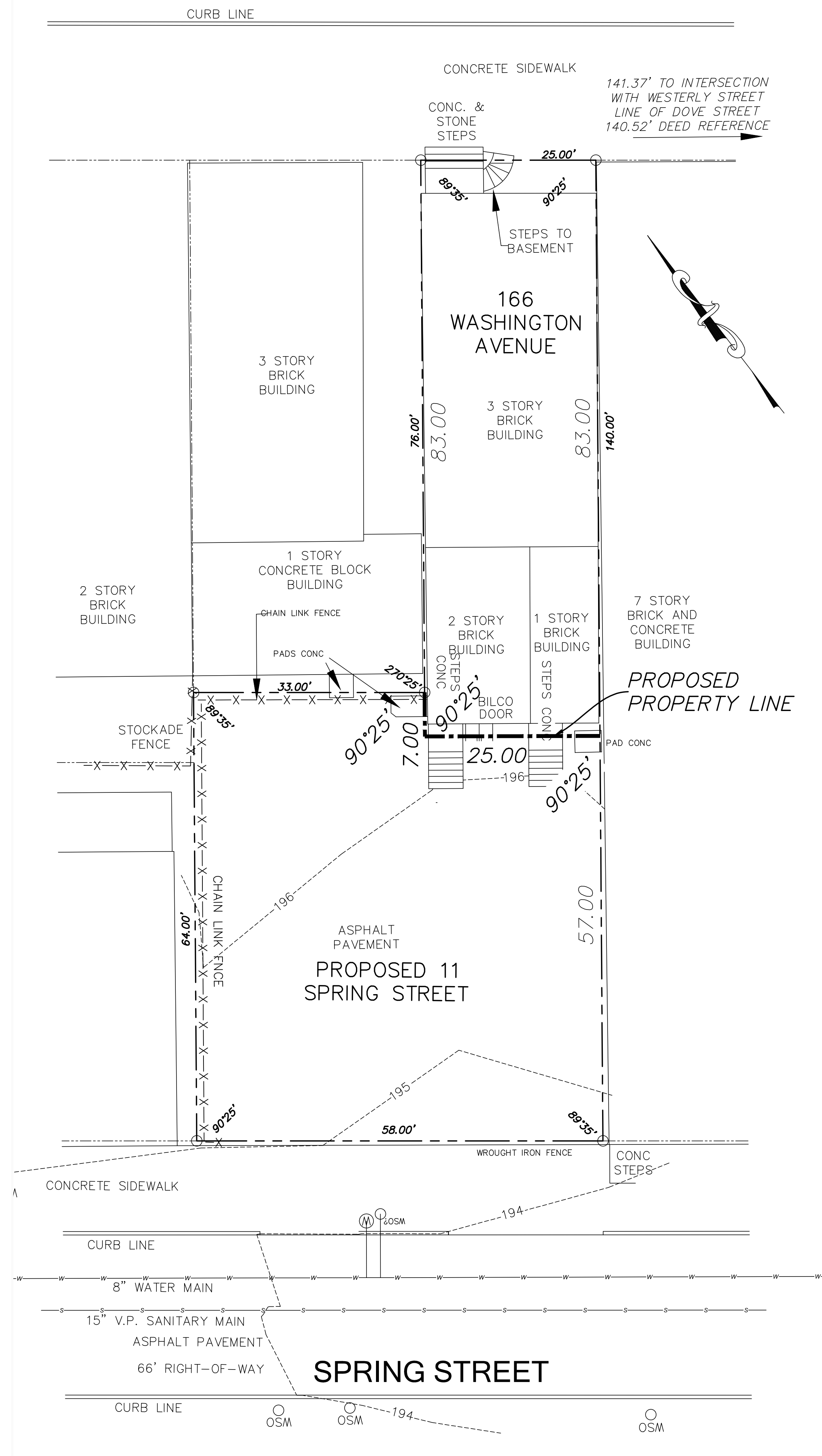


WASHINGTON AVENUE

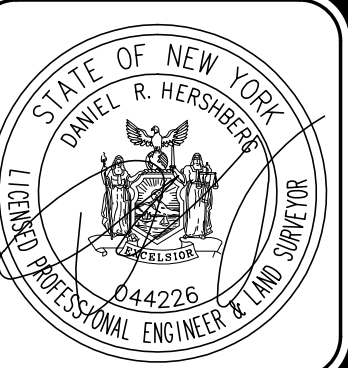


HERSHBERG & HERSHBERG

Consulting Engineers and Land Surveyors

18 Locust Street
Albany, New York 12203

ALTERATION OF THIS DOCUMENT EXCEPT BY A LICENSED PROFESSIONAL ENGINEER OR LAND SURVEYOR, IS ILLEGAL



DATE	REVISIONS

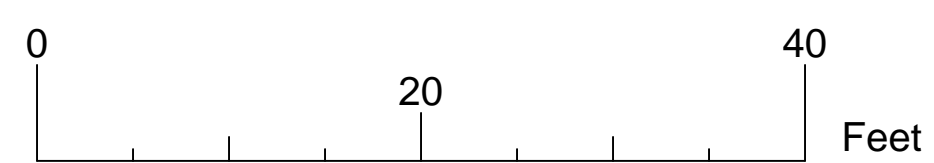
EXISTING CONDITIONS
PROPOSED APARTMENTS
#11 SPRING STREET
ALBANY, NEW YORK

FILE: 180218
SCALE: 1"=10'
DATE: 8/5/19
CHK: DBH
BY: JS
180218-1.DWG

FOR MUNICIPAL APPROVAL ONLY-NOT INTENDED FOR CONSTRUCTION

C1

WASHINGTON AVENUE



LEGEND

- UTILITY POLE
- WATER SHUTOFF
- HYDRANT
- WATER VALVE
- PROPOSED WATER SERVICE
- PROPOSED SANITARY SEWER
- PROPOSED ROOF DRAIN
- PROPOSED ROOF DRAIN LOCATION
- NEW PAVEMENT
- NEW CONCRETE WALK

NOTES

1. 48 HOURS NOTICE MUST BE GIVEN TO DEPARTMENT OF WATER FOR INSPECTIONS FOR THE SANITARY, WATER AND STORMWATER UTILITIES.
2. PRESSURE AND LEAKAGE TESTING OF THE WATER SERVICE SHALL BE WITNESSED BY DEPARTMENT STAFF AND ACCEPTABLE BACTERIOLOGICAL TEST MUST BE SUBMITTED AND ACCEPTED BY THE DEPARTMENT PRIOR TO FINAL OF THE NEW WATER SERVICE.
3. PRIOR TO USE, ALL WATER LINES MUST BE CHLORINATED AND HAVE A BACTERIOLOGICAL TEST PERFORMED IN ACCORDANCE WITH CITY OF ALBANY STANDARDS.
4. ALBANY WATER DEPARTMENT MUST TAP THEIR OWN MAINS.
5. FIRE SPRINKLER SYSTEM WILL BE DESIGNED UNDER NFPA 13R. THE FIRE SERVICE WILL BE A 4" SERVICE WITH WATTS LF709 DOUBLE CHECK VALVES. POTABLE WATER SERVICE WILL BE A 2" SERVICE WITH WATTS LF719 DOUBLE CHECK VALVES.

EXISTING SITE COVERAGE STATISTICS

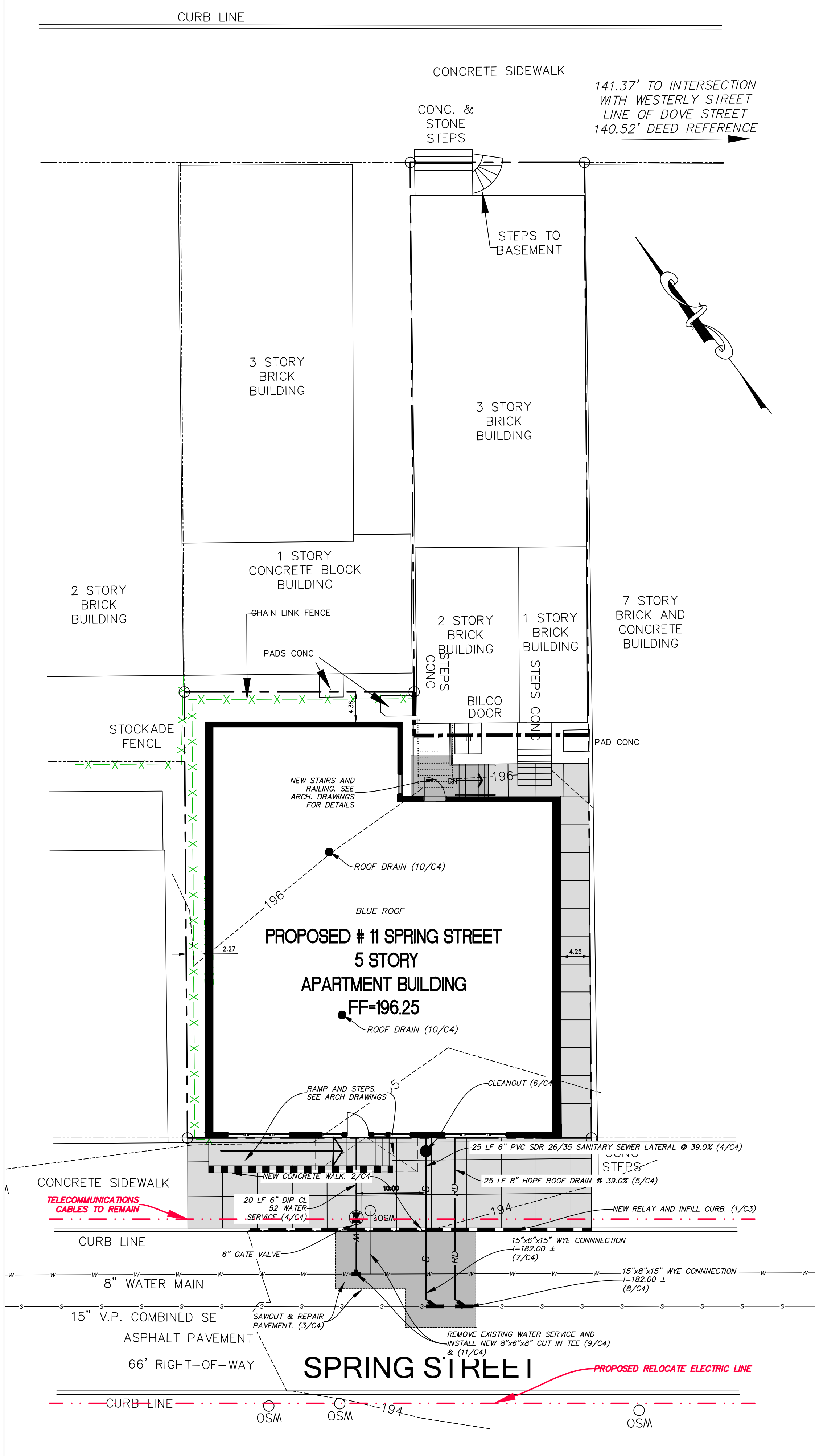
DESCRIPTION	S.F.	ACRES	%
GROSS SITE AREA	5,612	0.128	100.00%
IMPERVIOUS AREA	5,420	0.124	96.6
BUILDING COVERAGE	1,871	0.042	33.3
PAVEMENT/SIDEWALK COVERAGE	3,549	0.081	63.3
PERVIOUS AREA	192	0.004	3.4

PROPOSED SITE COVERAGE STATISTICS #166 WASHINGTON AVENUE

DESCRIPTION	S.F.	ACRES	%
GROSS SITE AREA	2,056	0.047	100.00%
IMPERVIOUS AREA	1,952	0.044	94.9
BUILDING COVERAGE	1,871	0.044	91.0
PAVEMENT/SIDEWALK COVERAGE	81	0.001	3.9
PERVIOUS AREA	104	0.002	5.1

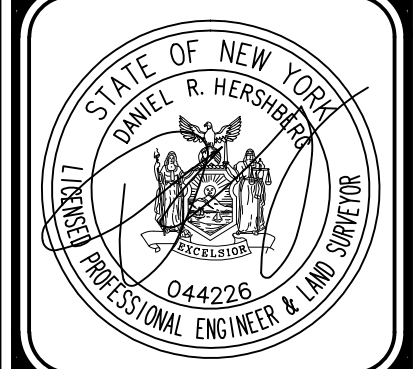
PROPOSED SITE COVERAGE STATISTICS #11 SPRING STREET

DESCRIPTION	S.F.	ACRES	%
GROSS SITE AREA	3,552	0.081	100.00%
IMPERVIOUS AREA	3,175	0.072	89.4
BUILDING COVERAGE	2,819	0.064	79.4
PAVEMENT/SIDEWALK COVERAGE	356	0.008	10.0
PERVIOUS AREA	377	0.009	10.6



HERSHBERG & HERSHBERG
Consulting Engineers and Land Surveyors
18 Locust Street
Albany, New York 12203

ALTERATION OF THIS DOCUMENT EXCEPT BY A LICENSED PROFESSIONAL ENGINEER OR LAND SURVEYOR, IS ILLEGAL



DATE	REVISIONS
10/4/19	COMMENT LETTERS
12/2/19	AND COMMENTS
12/19/19	GENERAL REVISIONS
4/7/20	ACCESS REVISION
4/29/20	ELECTRICAL LINE RELOCATION

SITE PLAN
 PROPOSED APARTMENTS
 #11 SPRING STREET
 ALBANY, NEW YORK
 FILE: 180218
 SCALE: 1"=10'
 DATE: 8/6/19
 CHK: DRH
 BY: AS
 180218-1.DWG

Concrete Washout System

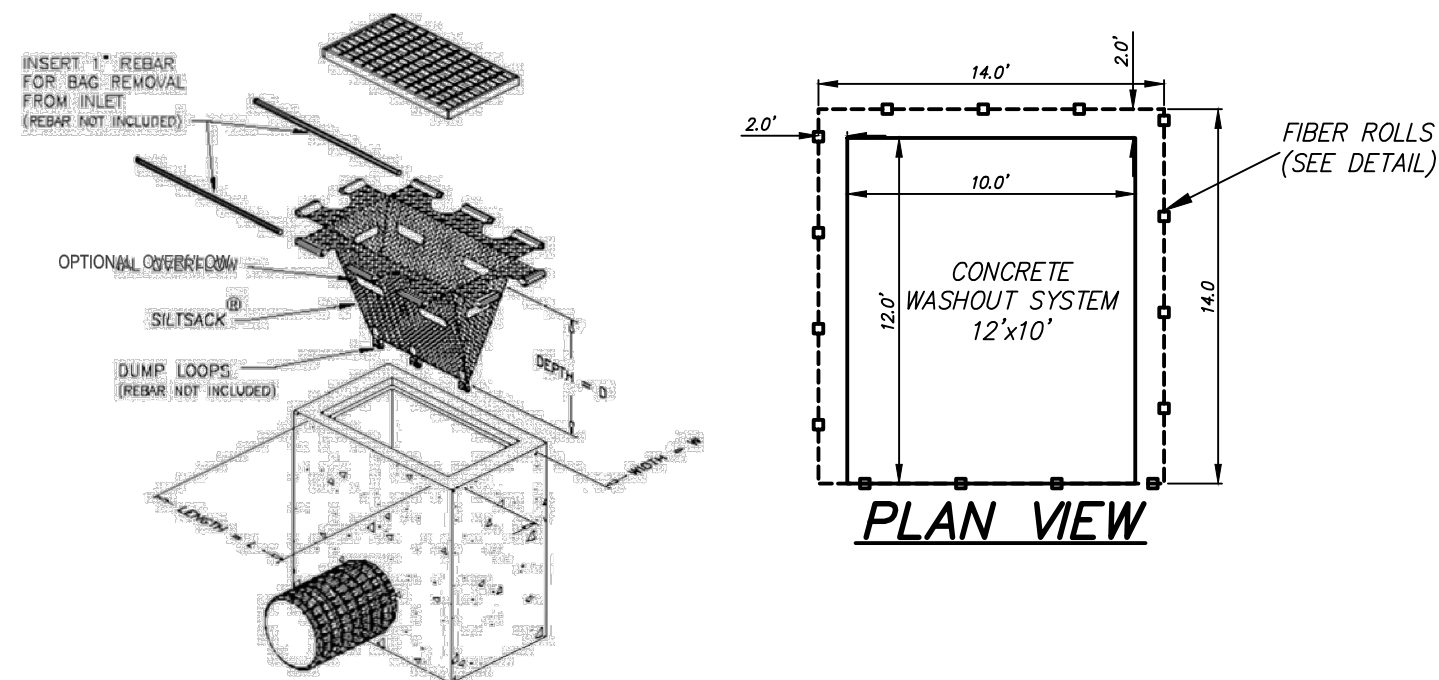


The Vinyl-Con Concrete Washout System is a vinyl container with a PVC framework and filter system for washing out concrete and pump trucks on the jobsite. The system is designed to hold 6 1/2 yds. of material, equivalent to washing out more than 30 concrete trucks. Manufactured by RTC Environmental Solutions. 530-589-2007.

Seam:

Surround with double layer of hay bales. Add the sign

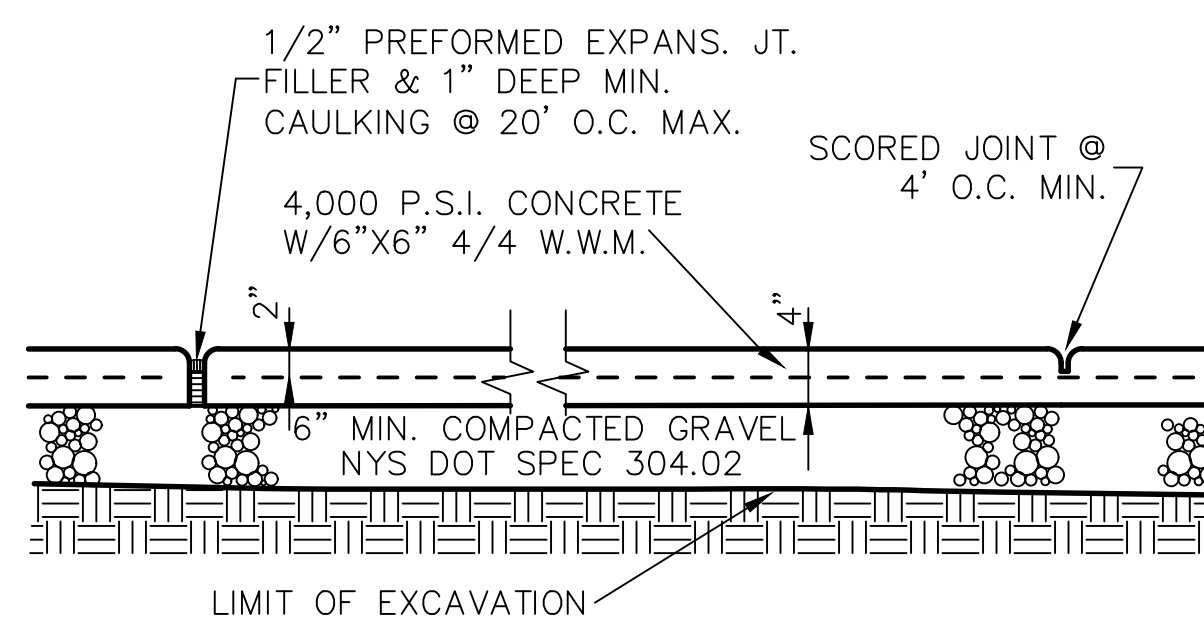
Silt Sack for CB



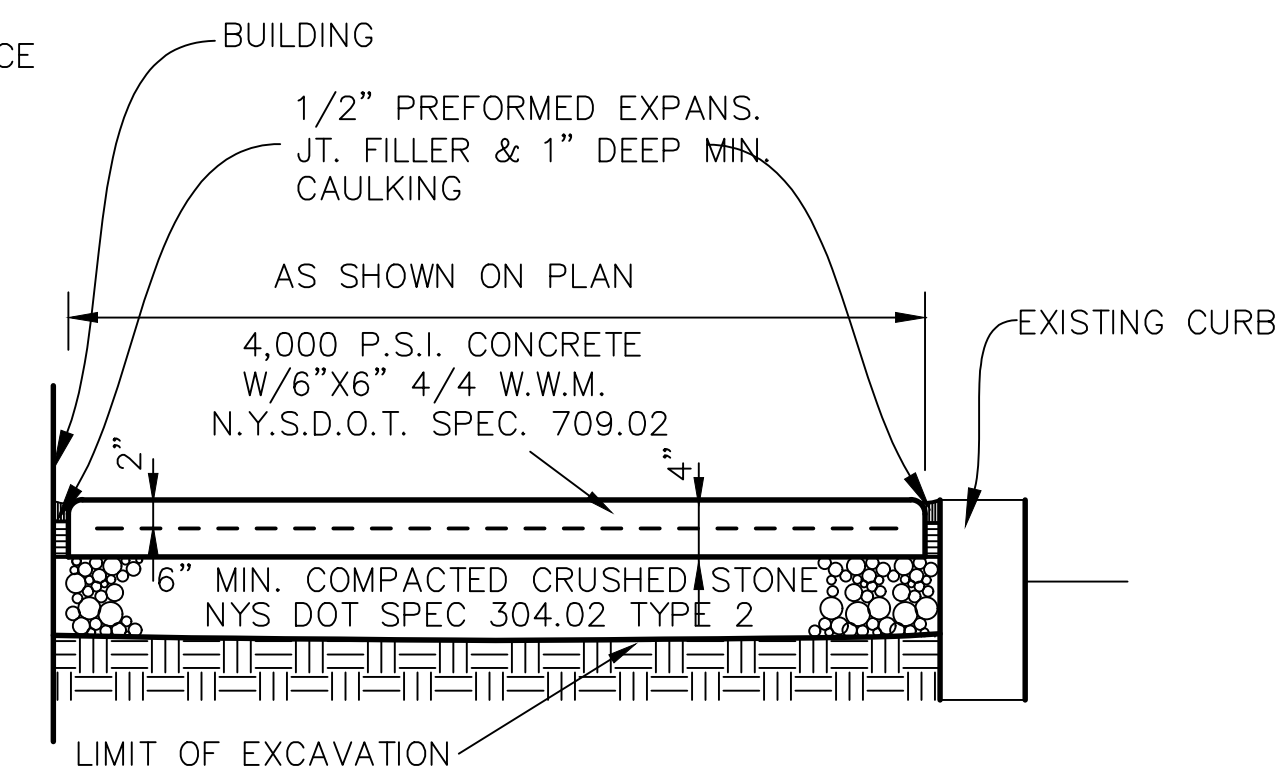
1/C3 CONCRETE WASHOUT SYSTEM DETAIL
NOT TO SCALE

NOTES:

1. SIDEWALK SLOPE FROM BUILDING WALL TO CURB TO BE 1/8" PER FOOT
2. SIDEWALK FINISH TO BE MAGNESIUM FLOAT FINISH
3. CONCRETE WALK TO CONFORM TO CITY OF ALBANY ENGINEERING SPECIFICATIONS
4. CONCRETE USED SHALL HAVE AN AIR CONTENT OF 5% MIN. TO 7% MAX., AND A SLUMP OF THREE INCHES MIN. TO FIVE INCHES MAX.
5. ALL CONCRETE SIDEWALK REPLACEMENT SHALL BE TO FULL PANEL LIMITS. PARTIAL REPLACEMENTS WILL NOT BE ALLOWED.
6. EXPANSION JOINTS TO BE PLACED BETWEEN ADJACENT SLABS, AT BUILDING LINE OR PENETRATING STRUCTURES.
7. ALL CURBING SHALL BE RESET OR REPLACED AS REQUIRED IN ACCORDANCE WITH CITY DETAILS.

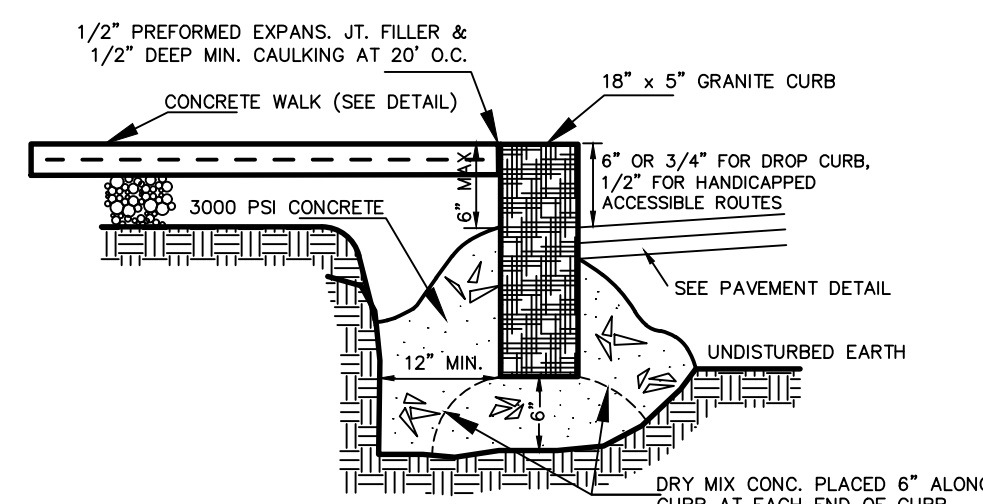


LONGITUDINAL SECTION

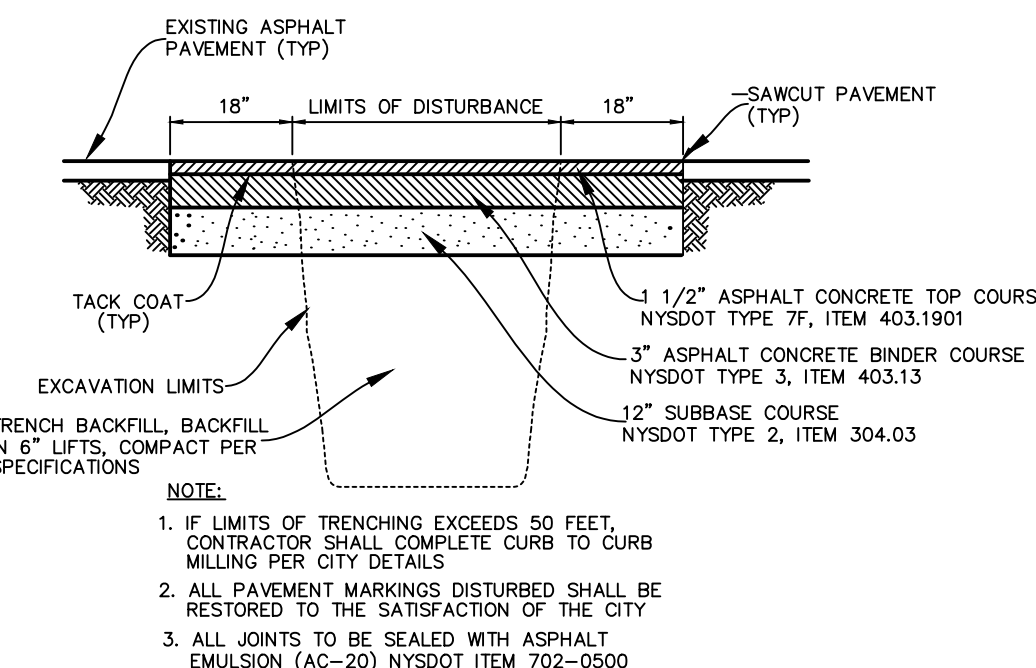


CROSS SECTION

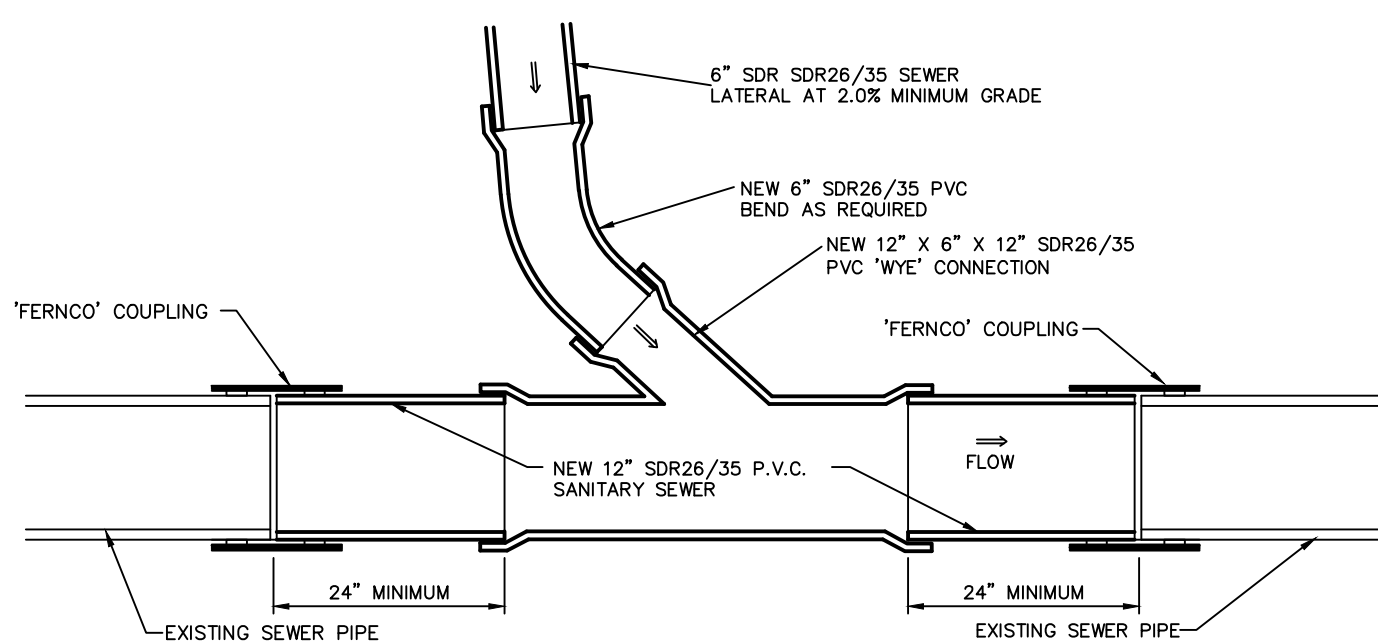
4/C3 CONCRETE WALK REPAIR DETAIL IN CITY R.O.W.
NOT TO SCALE



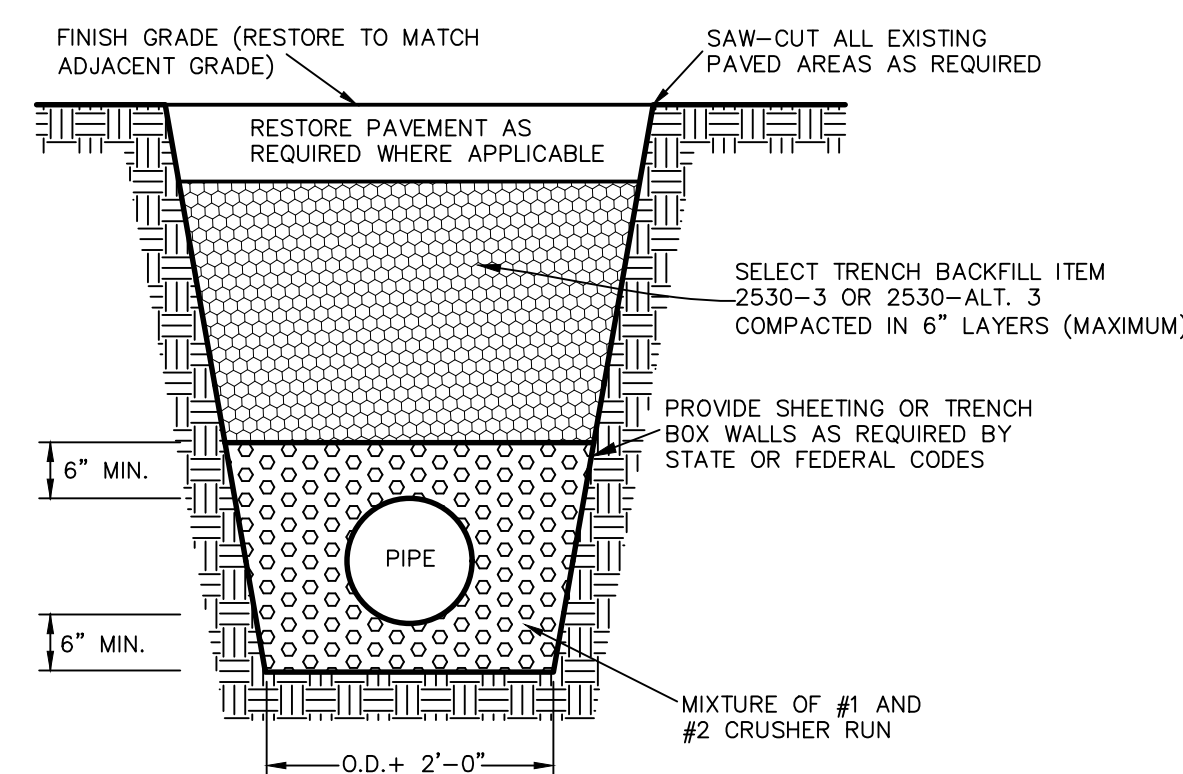
3/C3 NEW OR RELAY GRANITE CURB DETAIL
NOT TO SCALE



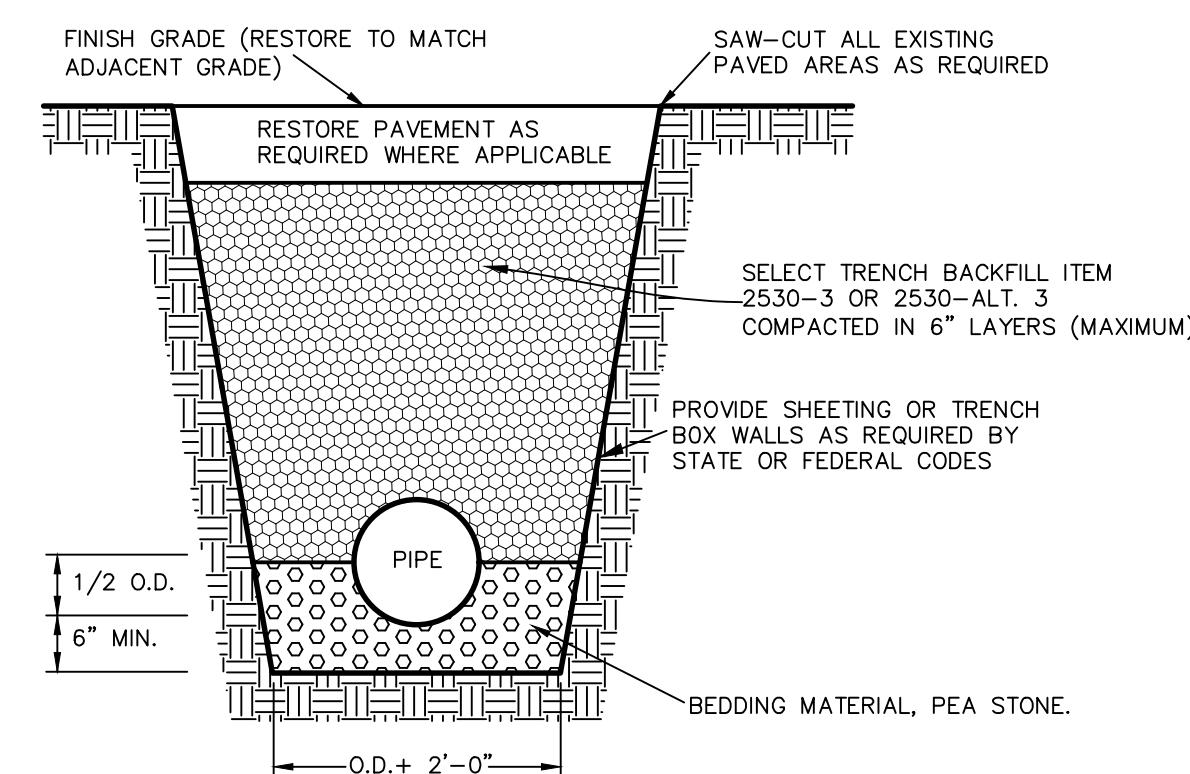
5/C3 STREET RESTORATION ASPHALT PAVEMENT DETAIL
NOT TO SCALE



2/C3 PLAN SECTION CUT IN WYE DETAIL
NOT TO SCALE

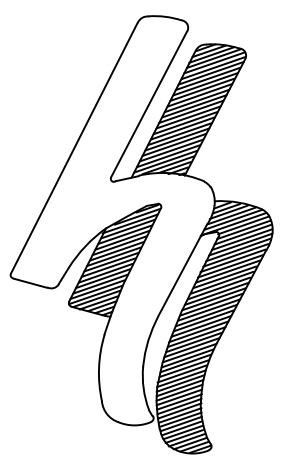


6/C3 TYPICAL SANITARY SEWER TRENCH DETAIL
NOT TO SCALE



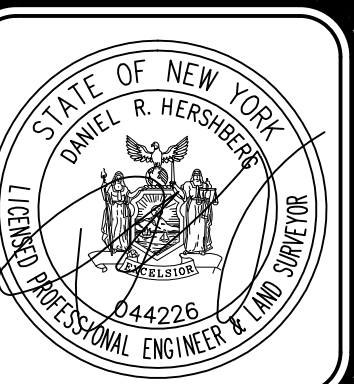
7/C3 TYPICAL STORM SEWER TRENCH DETAIL
NOT TO SCALE

FOR MUNICIPAL APPROVAL ONLY-NOT INTENDED FOR CONSTRUCTION



HERSHBERG & HERSHBERG
Consulting Engineers and Land Surveyors
18 Locust Street
Albany, New York 12203

ALTERATION OF THIS DOCUMENT EXCEPT BY A LICENSED PROFESSIONAL ENGINEER OR LAND SURVEYOR, IS ILLEGAL



DATE	REVISIONS

DETAILS
PROPOSED APARTMENTS
#11 SPRING STREET
ALBANY, NEW YORK

FILE: 180218 DATE: 8/6/19 CHK: DBH SCALE: NTS

C3