



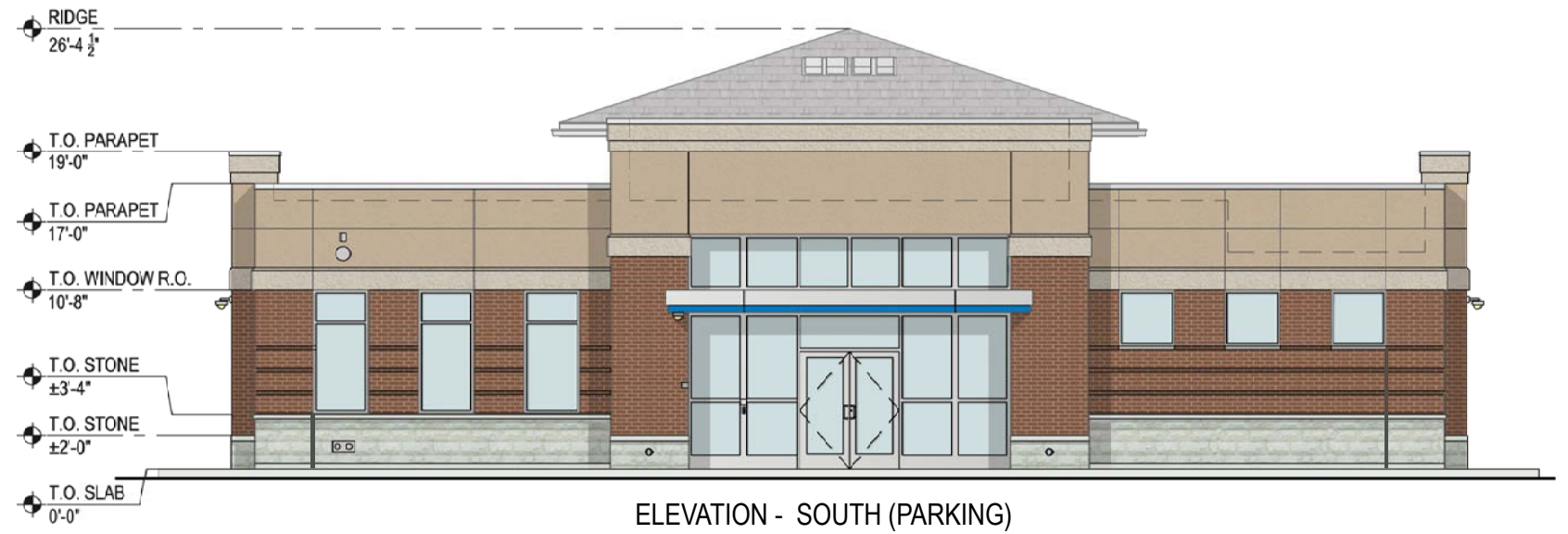
ELEVATION - EAST (PARKING)



ELEVATION - NORTH (WESTERN AVE)



ELEVATION - WEST (HOMESTEAD STREET)



ELEVATION - SOUTH (PARKING)



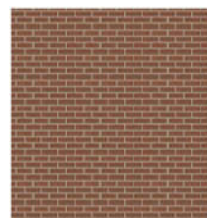
STONE - ST1

MANUFACTURED
STONE BASE



MULLIONS

ANODIZED
ALUMINUM
STOREFRONT



BRICK - BR2

BRICK FACADE



PAINT - EPT2

PAINTED EIFS



PAINT - EPT4

PAINTED EIFS



TPGArchitecture

TPG ARCHITECTURE, LLP
31 PENN PLAZA
132 WEST 31ST STREET, 5TH FLOOR, NEW YORK, NY 10001
212.753.0800 | TPGARCHITECTURE.COM

PROJECT
1170A Western Avenue

Albany, New York

PROJECT NO.
1617049-00

DRAWN BY
JMR

DATE
10/02/2018

DRAWING
COLORED ELEVATIONS - NO SIGNAGE

SCALE
N.T.S.

FLOOR

01

DRAWING

SK-1