

+ **Neighborhood Presentation**
May 2, 2019



MARIA
COLLEGE

Maria College
Comprehensive
Master Plan
Albany, New York
Presented to
Maria College


The LA GROUP
Language Architecture & Engineering PC

architecture+ 

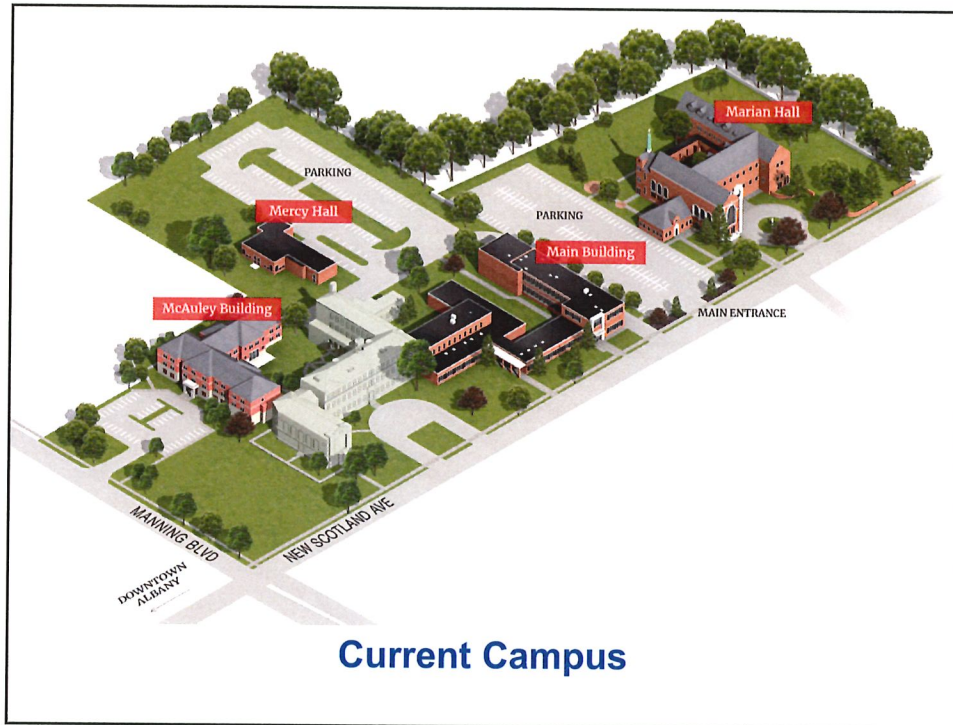
architecture+ | 297 River Street, Troy, New York 12180 | P 518-272-4481 | F 518-272-1605 | www.oplususa.com

+ **Campus Master Plan**

Agenda

- Introduction
 - Tom Gamble, Ph.D., President, Maria College
- Overview of Project
 - Joel Nudi, MBA, PMP, Maria College
 - Casey Crossley, AIA, LEED AP, architecture+
- Questions and Answers

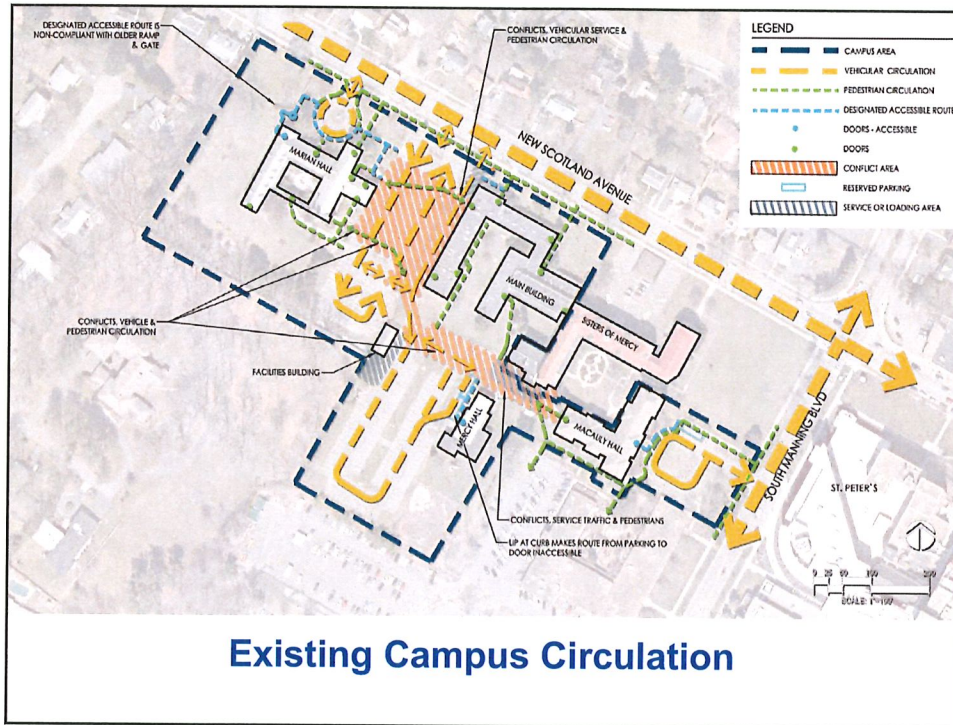
2



+ Campus Master Plan

Issues

- Safety concerns
 - Pedestrians move between Marian Hall and the Main Building and must traverse the upper parking lot.
 - Pedestrians moving between Marian Hall, the Main Building, and Mercy Hall have limited walkways and must walk in driveways and parking areas to move about the campus
- Objectives of this phase
 - Enhance beauty of campus to the neighborhood
 - Create pedestrian-friendly collegiate feel to campus.
 - Optimize parking at perimeter of campus
 - Create cohesive and visible presence along New Scotland Ave. & South Manning Blvd.
 - Improve entrances and accessibility throughout campus



+ Campus Master Plan

Planning

■ Project History

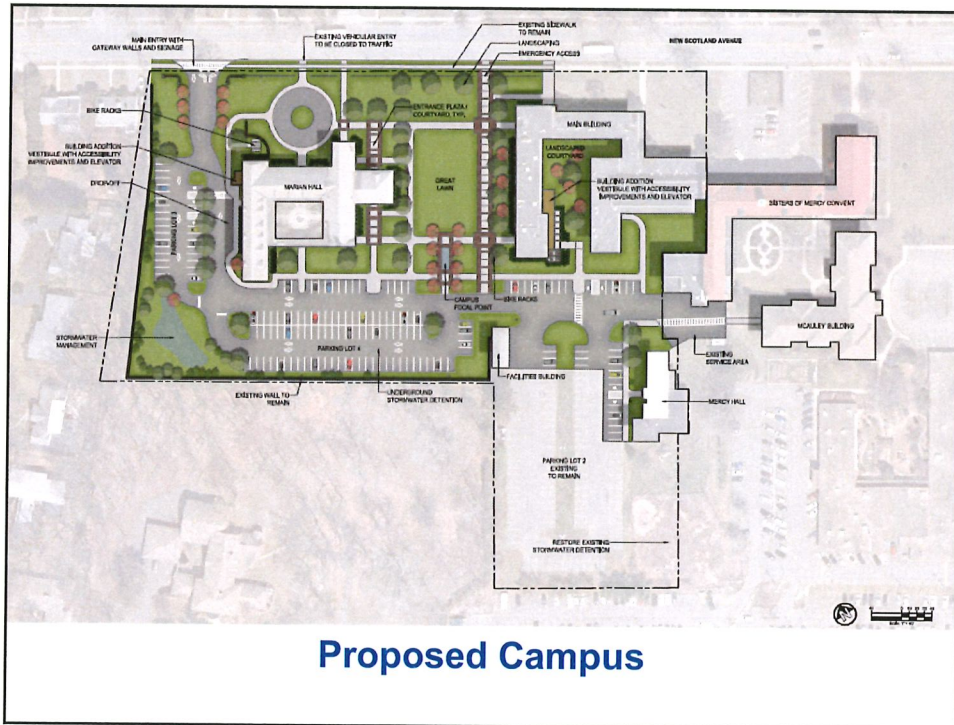
- Started Fall of 2017
- Meetings within the College
 - November & December 2017
- Approved by Board in April 2018
 - Initial work moved OT and Nursing programs to McAuley
- Approved by Northeast Chapter of Sisters of Mercy in February 2019
- Work since then on Campus Identity
 - Address safety concerns
 - Develop a cohesive concept for layout and aesthetic character of the campus
 - Maximize the utilization of the building stock through reorganization of college functions and programs.
 - Support Maria College's mission and embody its values.

+ Campus Master Plan

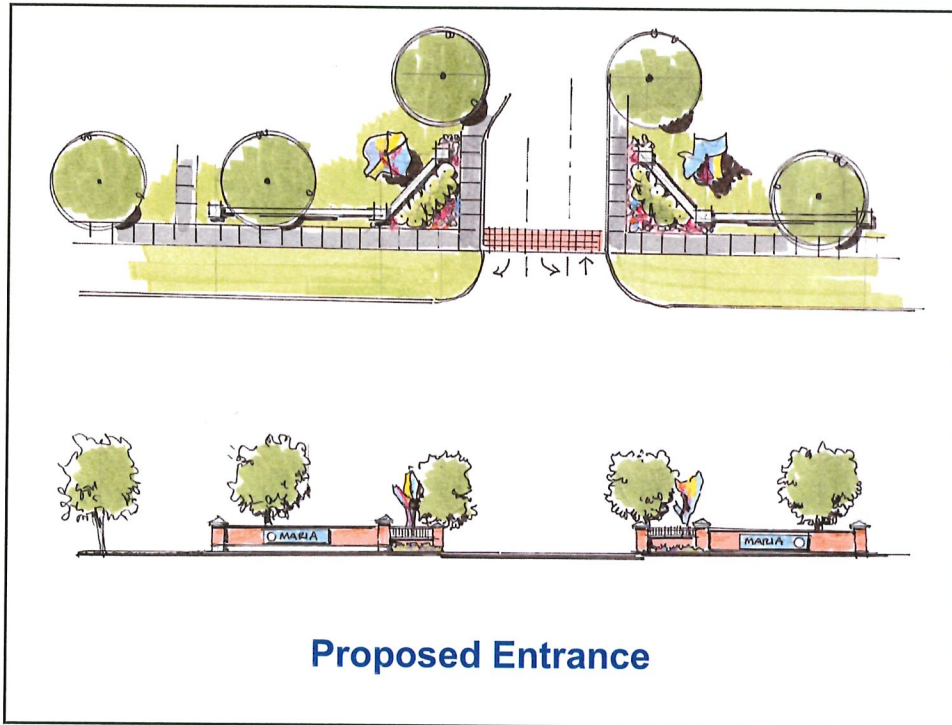
7

Major Objectives

- Enhance beauty of campus to the neighborhood
- Move vehicular traffic and parking to perimeter of campus
- Create Great Lawn for everyday and special event use
- Consolidate three New Scotland entrances to one
- Work in coordination with Albany Traffic Master Plan
- Create Café for students, employees and neighbors



Proposed Campus

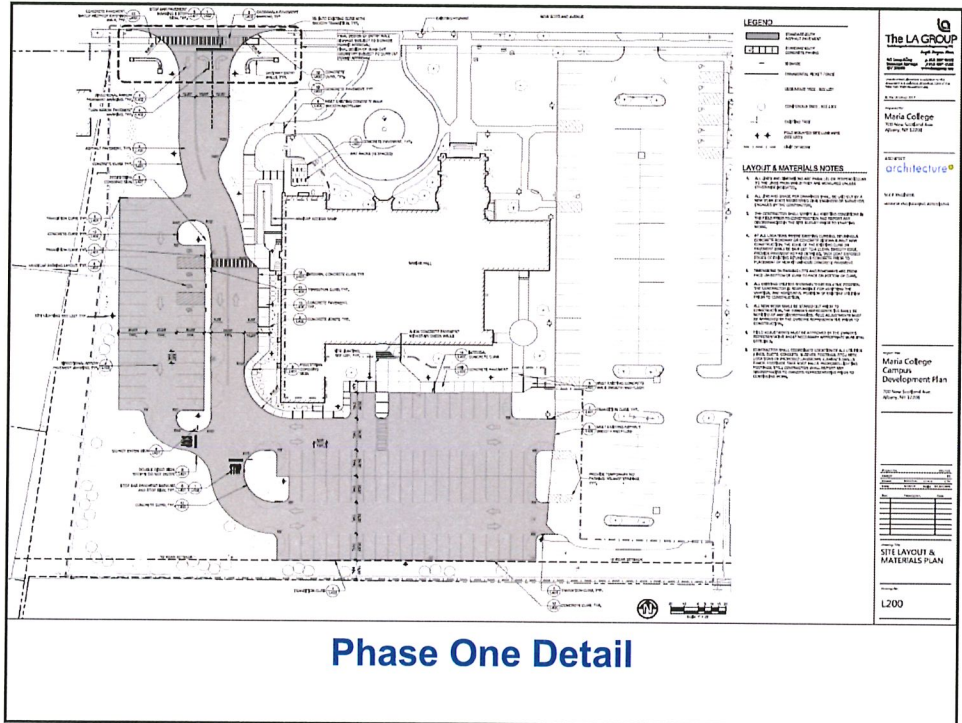
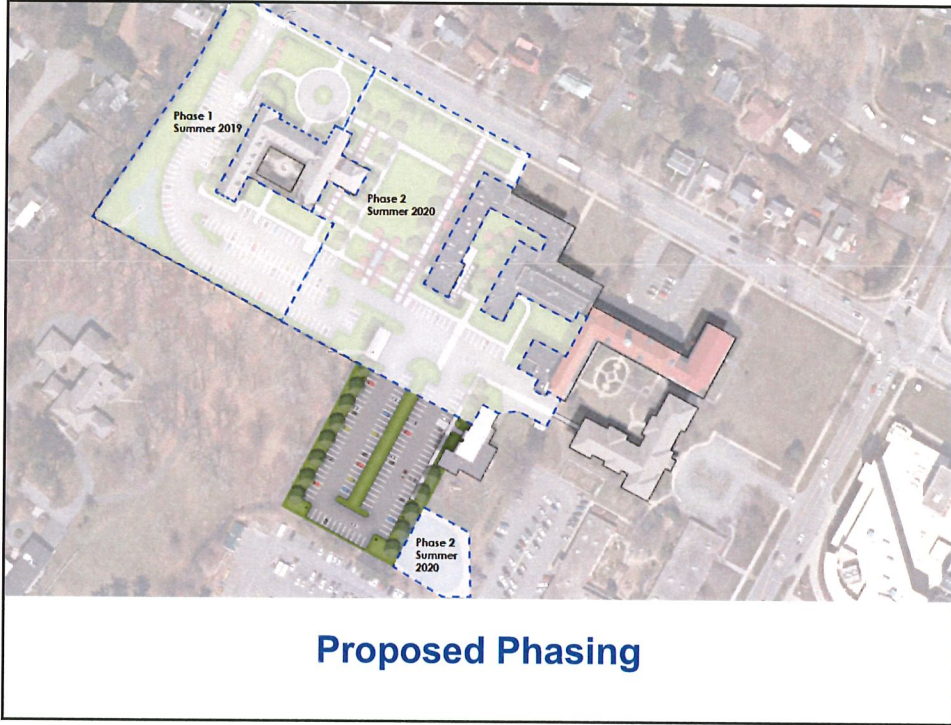


Proposed Entrance

+ Campus Master Plan

Schedule

- Planning
 - Neighborhood meeting set for May 2
 - Planning meeting with City set for May 23
- Construction
 - Plan to start new access and parking in June
 - Complete new entrance to campus in Fall 2019
 - Start new Great Yard work in March 2020
 - Complete new Main elevator and Café work by August 2020



+ Campus Master Plan

Questions and comments

13



SERVICE . SCHOLARSHIP . JUSTICE . HOSPITALITY . DIVERSITY