

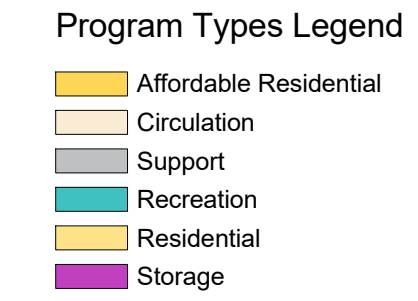
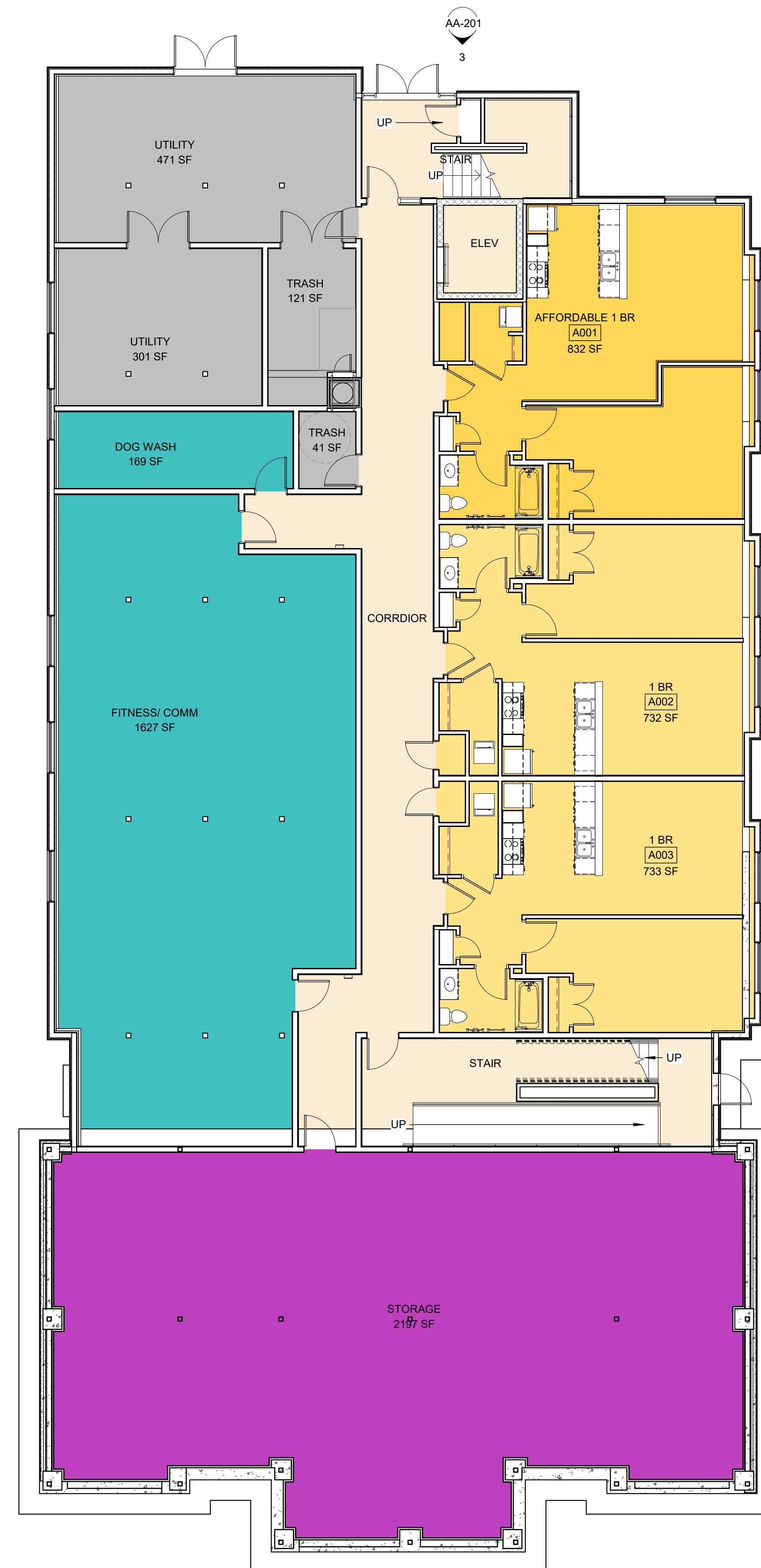
4 AA-201

AA-20 2

AA-20 2

2 First Floor Plan - Building A
1/8" = 1'-0"

1 AA-201



4 AA-201

AA-20 2

1 AA-201

1 Basement Floor Plan - Building A
1/8" = 1'-0"

N

Drawn By: BGD
 Checked By: ST
 Project Manager: CS

These documents and all the ideas, arrangements, designs and plans indicated thereon or presented thereby are owned by and remain the property of SWBR and no part thereof shall be utilized by any person, firm, or corporation for any purpose whatsoever except with the specific written permission of SWBR. All rights reserved. ©

Revisions

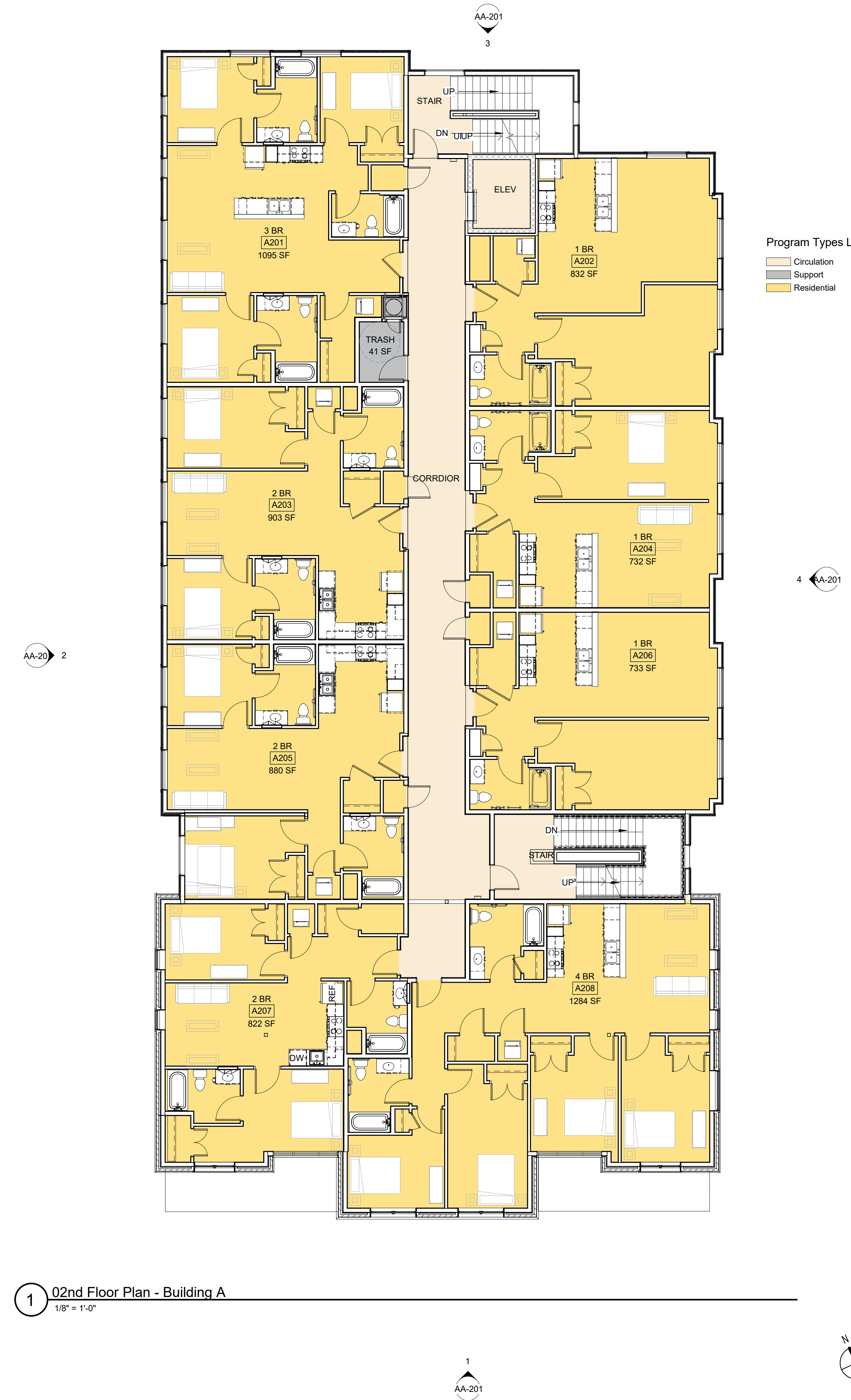
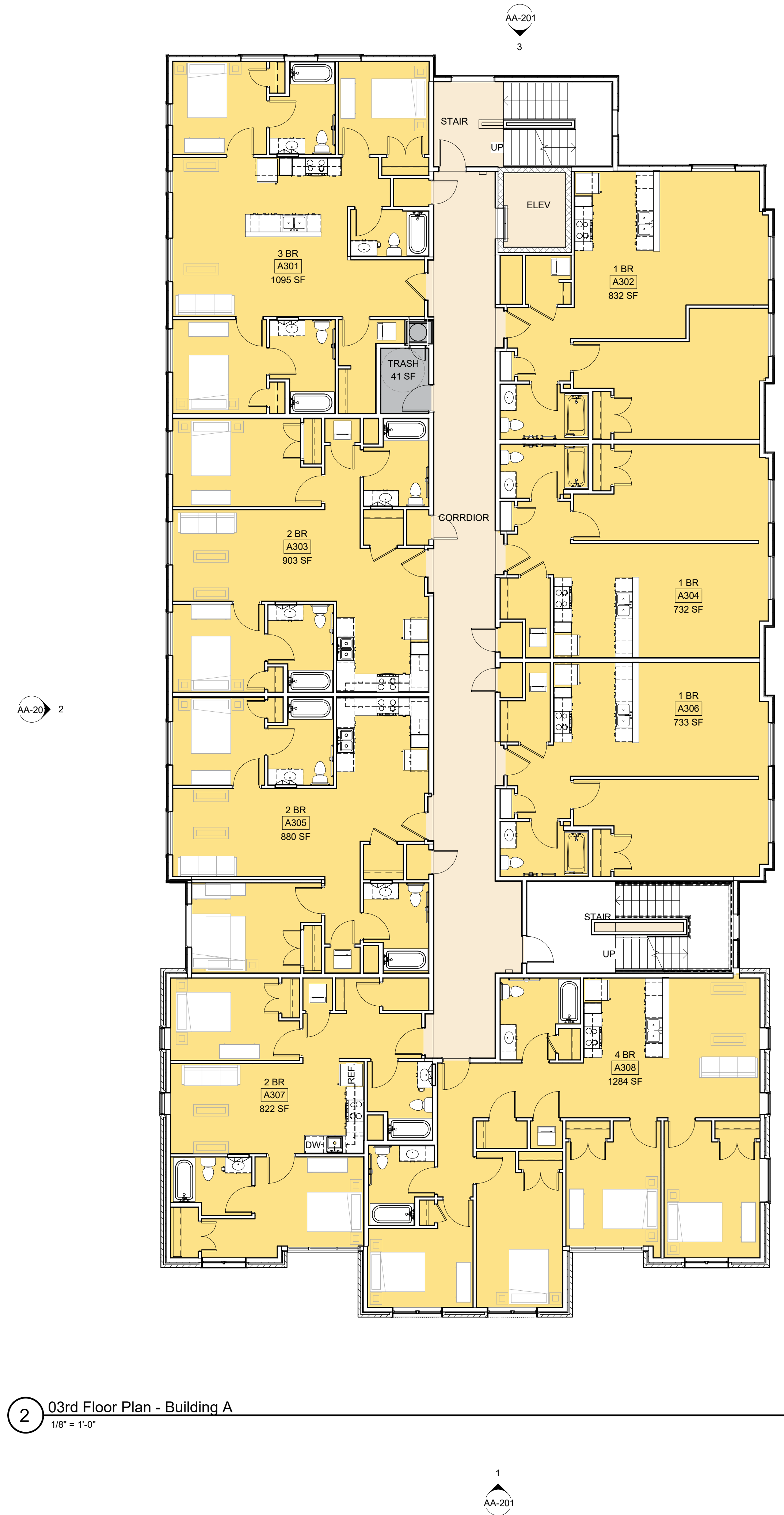
Lofts at Pine Hills
 SWBR Project Number 21140.00

Lofts at Pine Hills, LLC
 1 Noble Path
 Albany, NY 12205

AA-101

BUILDING A -
 BASEMENT & FIRST
 FLOOR PLANS

2/28/2022
 Design Development Set



Drawn By: BGD
 Checked By: ST
 Project Manager: CS

These documents and all the ideas, arrangements, designs and plans indicated thereon or presented thereby are owned by and remain the property of SWBR and no part thereof shall be utilized by any person, firm, or corporation for any purpose whatsoever except with the specific written permission of SWBR. All rights reserved. ©

Revisions

NO.	DESCRIPTION

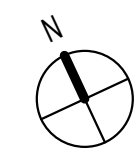
Lofts at Pine Hills
 SWBR Project Number 21140.00

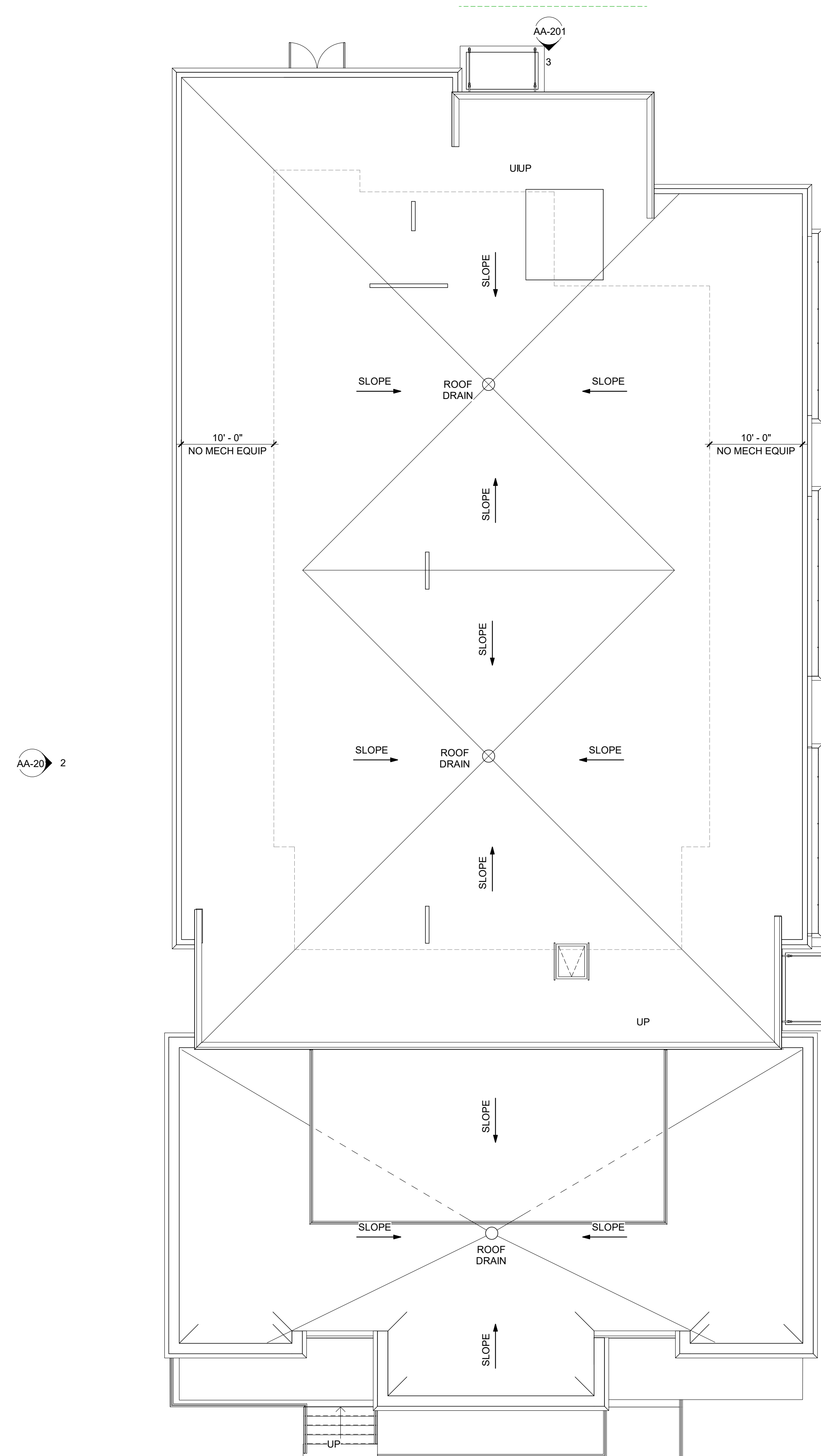
Lofts at Pine Hills, LLC
 1 Noble Path
 Albany, NY 12205

AA-102

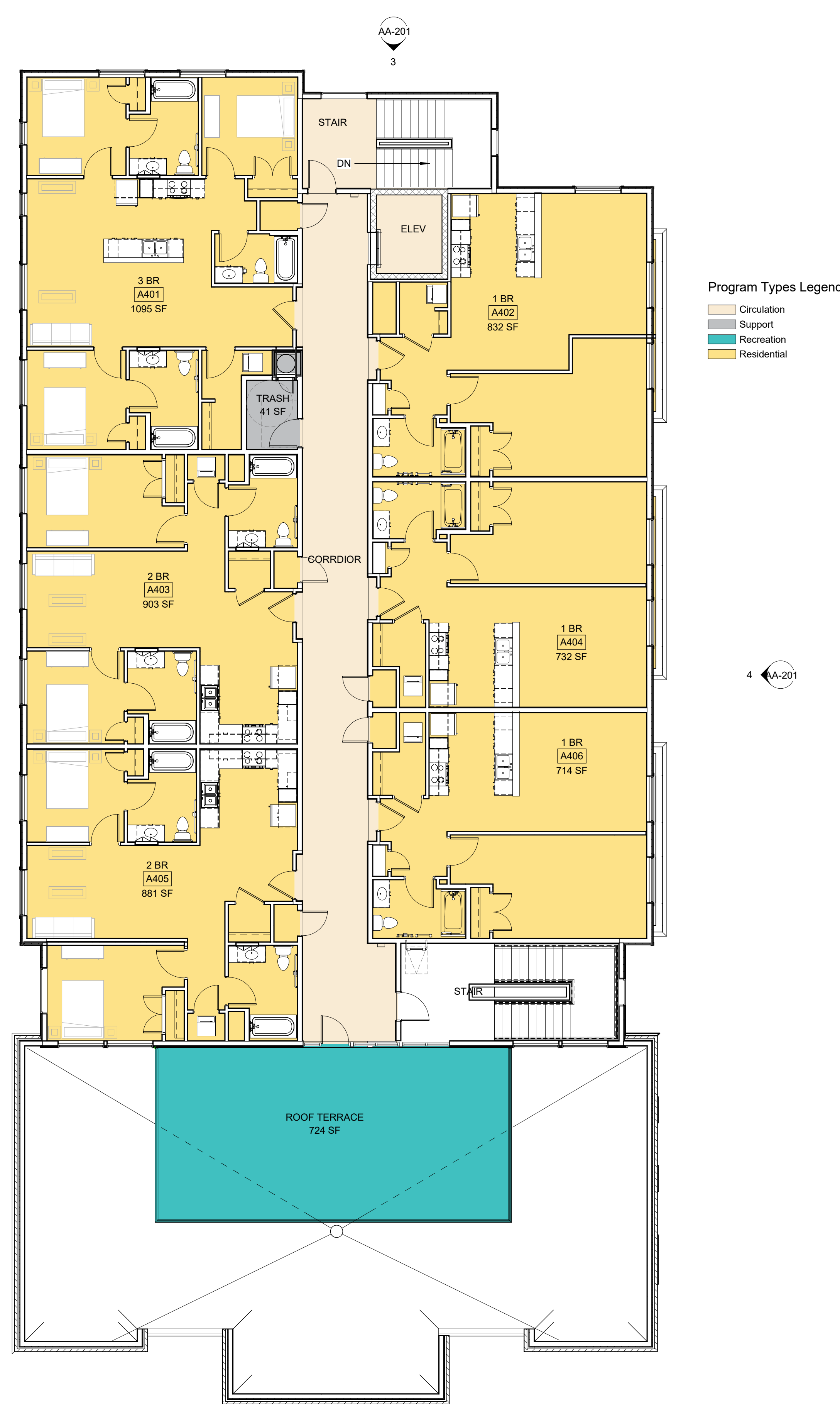
BUILDING A - SECOND & THIRD FLOOR PLANS

2/28/2022
 Design Development Set





2 Roof Plan - Building A
1/8" = 1'-0"



1 4th Floor Plan - Building A
1/8" = 1'-0"

Drawn By: BGD
Checked By: ST
Project Manager: CS

These documents and all the ideas, arrangements, designs and plans indicated thereon or presented thereby are owned by and remain the property of SWBR and no part thereof shall be utilized by any person, firm, or corporation for any purpose whatsoever except with the specific written permission of SWBR. All rights reserved. ©

Revisions

NO.	DESCRIPTION

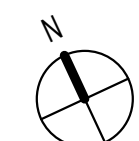
Lofts at Pine Hills
SWBR Project Number 21140.00

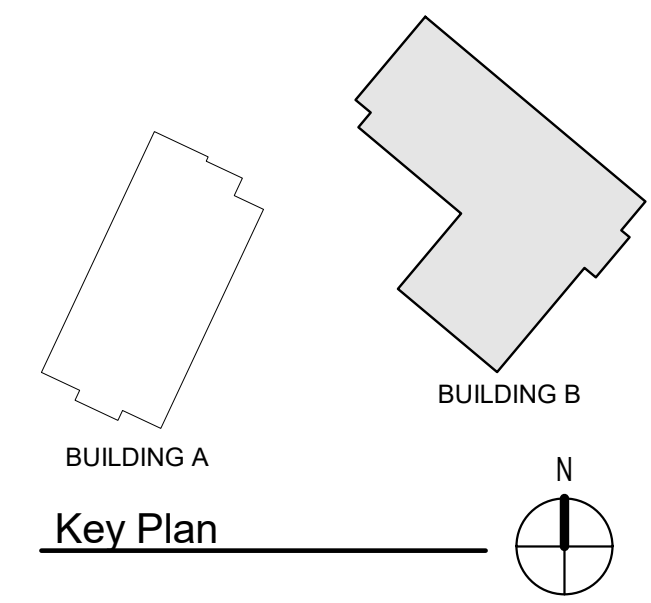
Lofts at Pine Hills, LLC
1 Noble Path
Albany, NY 12205

AA-103

BUILDING A -
FOURTH FLOOR &
ROOF PLANS

2/28/2022
Design Development Set





- Program Types Legend**
- Affordable Residential
 - Circulation
 - Offices
 - Support
 - Recreation
 - Residential
 - Storage

1 00 Basement Floor Plan - Building B
1/8" = 1'-0"

Drawn By: BGD
Checked By: ST
Project Manager: CS

These documents and all the ideas, arrangements, designs and plans indicated therein or presented thereby are owned by and remain the property of SWBR and no part thereof shall be utilized by any person, firm, or corporation for any purpose whatsoever except with the specific written permission of SWBR. All rights reserved. ©

Revisions

NO.	DESCRIPTION

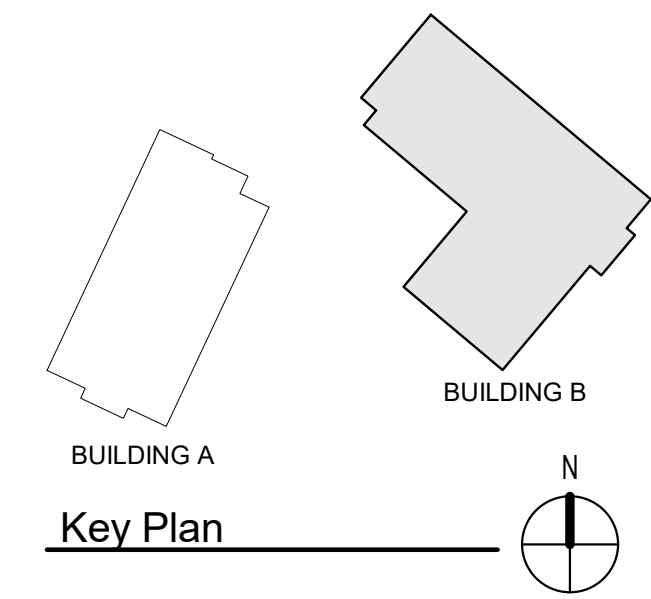
Lofts at Pine Hills
SWBR Project Number 21140.00

Lofts at Pine Hills, LLC
1 Noble Path
Albany, NY 12205

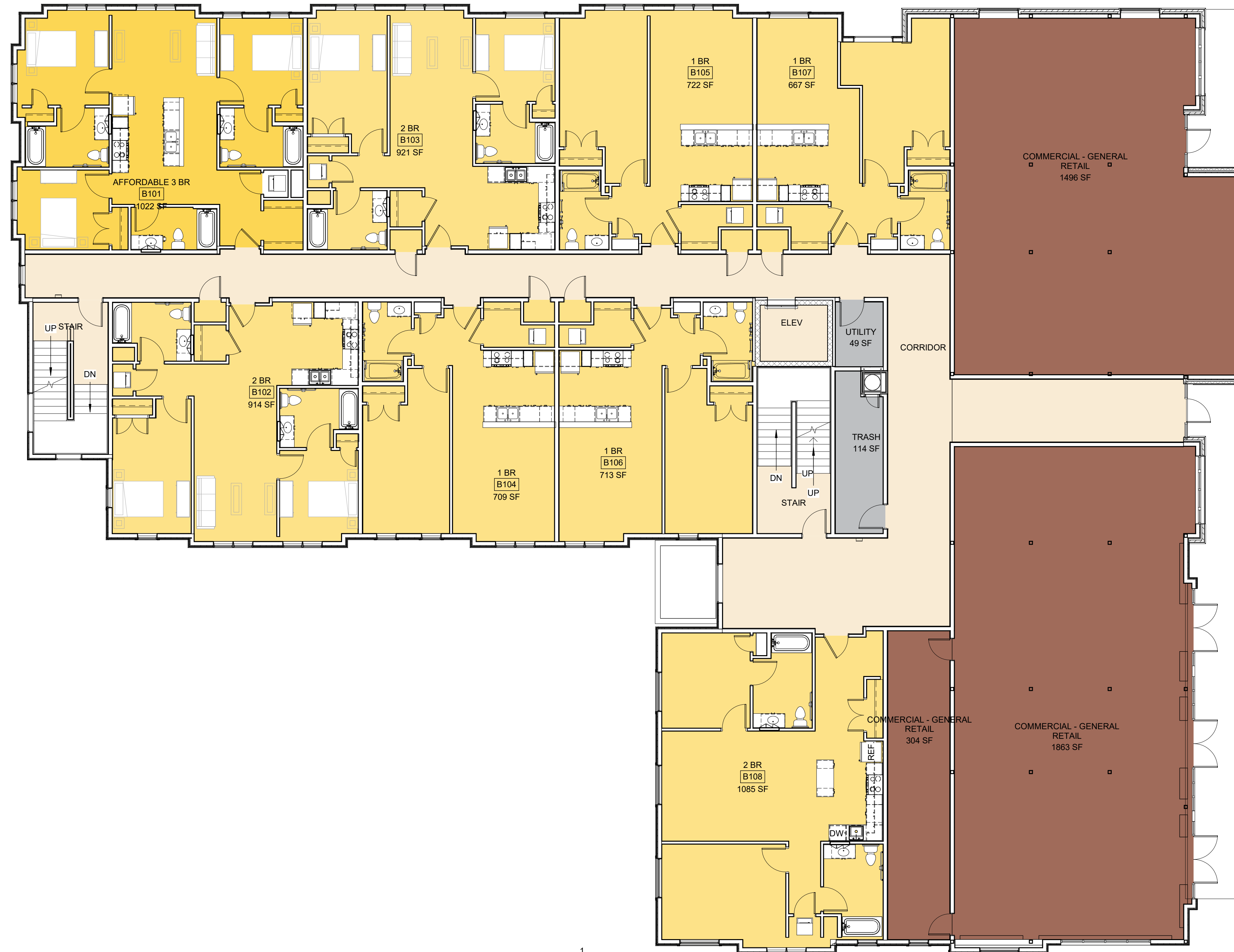
AB-101

BUILDING B - BASEMENT PLAN

2/28/2022
Design Development Set



AB-202
1



Program Types Legend

- Affordable Residential
- Circulation
- Support
- Residential
- Retail

AB-201
2

AB-201
2

AB-201
1

1 First Floor Plan - Building B

1/8" = 1'-0"

Drawn By: BGD
Checked By: ST
Project Manager: CS

These documents and all the ideas, arrangements, designs and plans indicated thereon or presented thereby are owned by and remain the property of SWBR and no part thereof shall be utilized by any person, firm, or corporation for any purpose whatsoever except with the specific written permission of SWBR. All rights reserved. ©

Revisions

Rev	Description

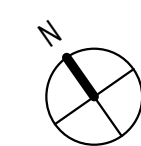
Lofts at Pine Hills
SWBR Project Number 21140.00

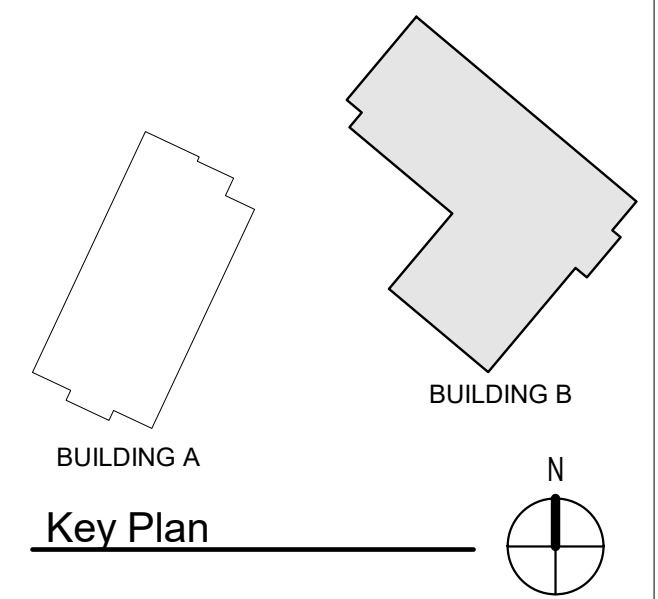
Lofts at Pine Hills, LLC
1 Noble Path
Albany, NY 12205

AB-102

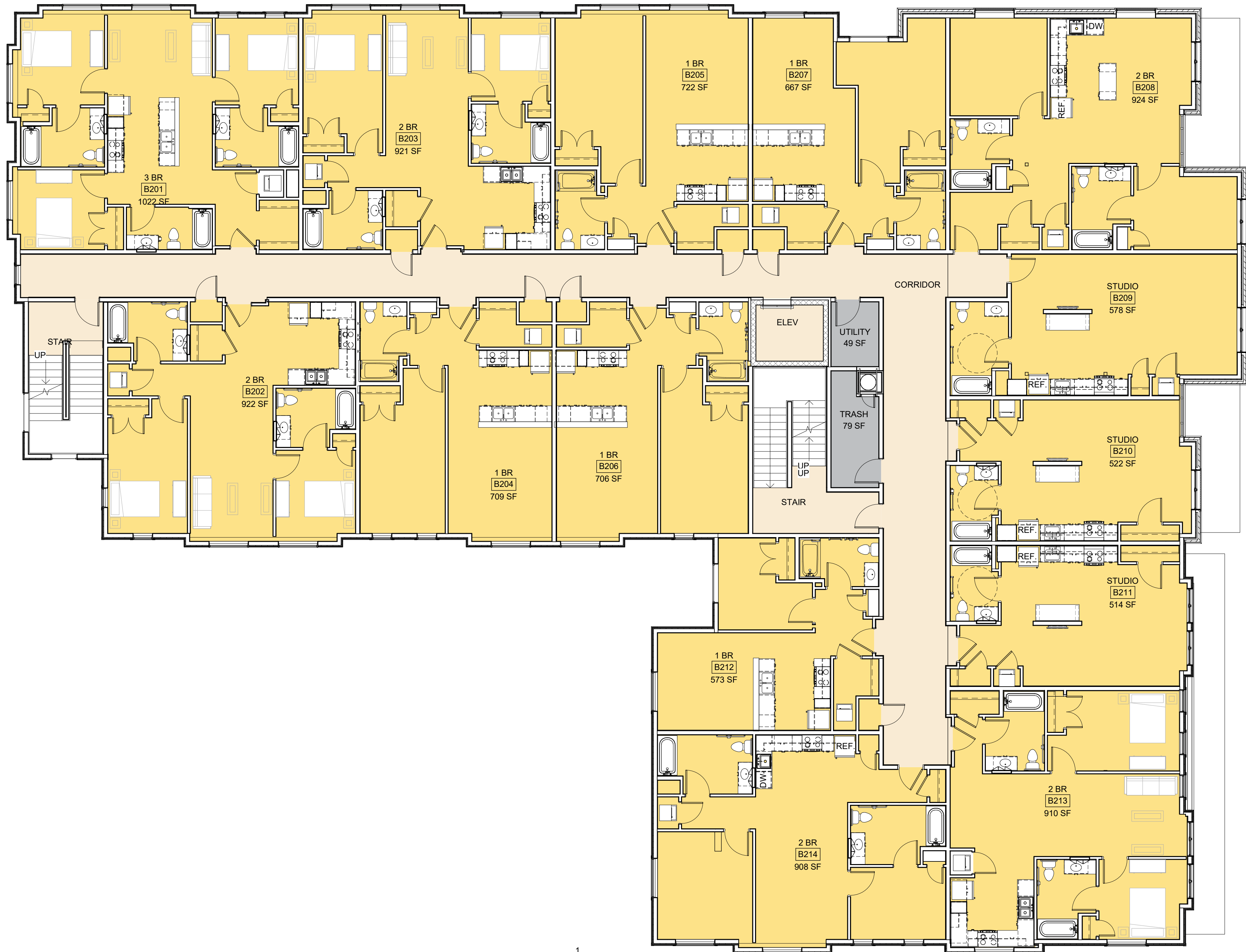
BUILDING B - FIRST FLOOR PLAN

2/28/2022
Design Development Set





AB-202
1



Program Types Legend
Circulation
Support
Residential

AB-201
2

AB-201
2

AB-201
1

1 02nd Floor Plan - Building B
1/8" = 1'-0"

Drawn By: BGD
Checked By: ST
Project Manager: CS

These documents and all the ideas, arrangements, designs and plans indicated thereon or presented thereby are owned by and remain the property of SWBR and no part thereof shall be utilized by any person, firm, or corporation for any purpose whatsoever except with the specific written permission of SWBR. All rights reserved. ©

Revisions

Rev	Description

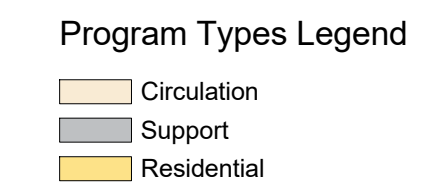
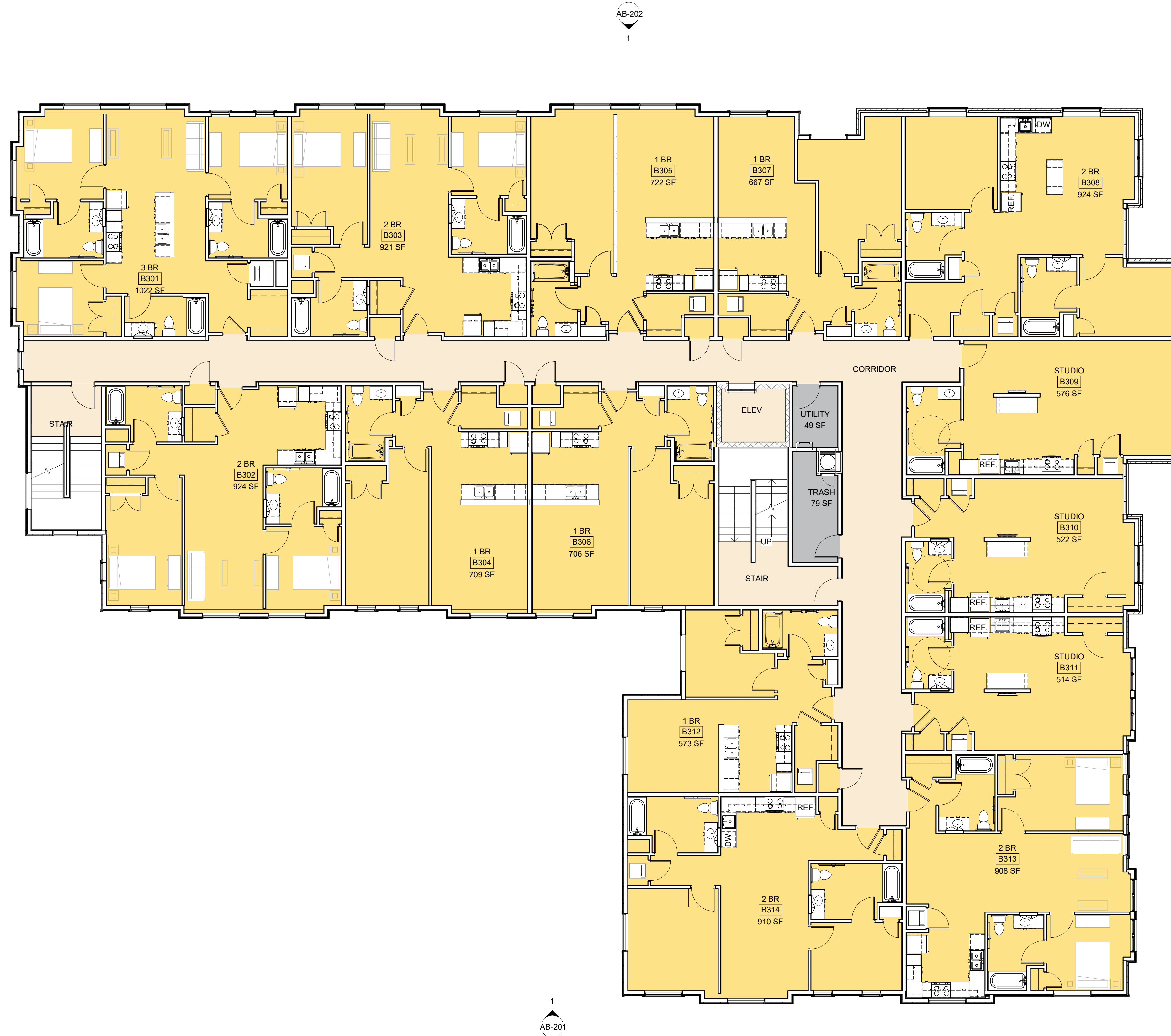
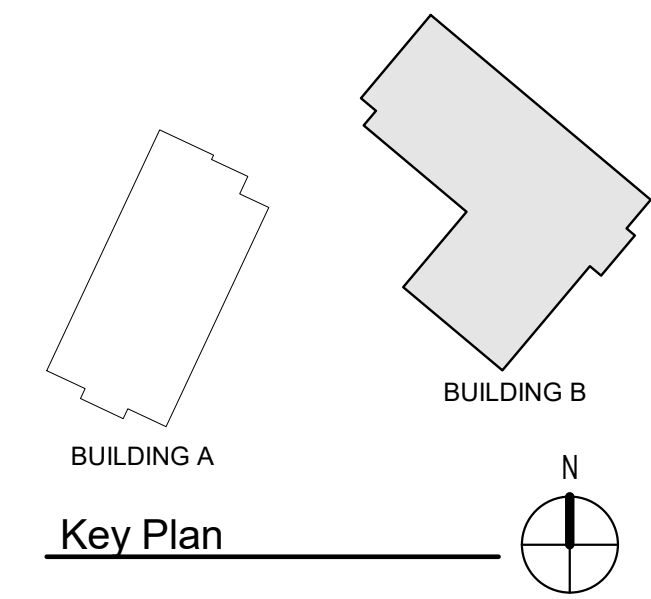
Lofts at Pine Hills
SWBR Project Number 21140.00

Lofts at Pine Hills, LLC
1 Noble Path
Albany, NY 12205

AB-103

BUILDING B - SECOND FLOOR PLAN

2/28/2022
Design Development Set



1 03rd Floor Plan - Building B
1/8" = 1'-0"

Drawn By: BGD
Checked By: ST
Project Manager: CS

These documents and all the ideas, arrangements, designs and plans indicated thereon or presented thereby are owned by and remain the property of SWBR and no part thereof shall be utilized by any person, firm, or corporation for any purpose whatsoever except with the specific written permission of SWBR. All rights reserved. ©

Revisions

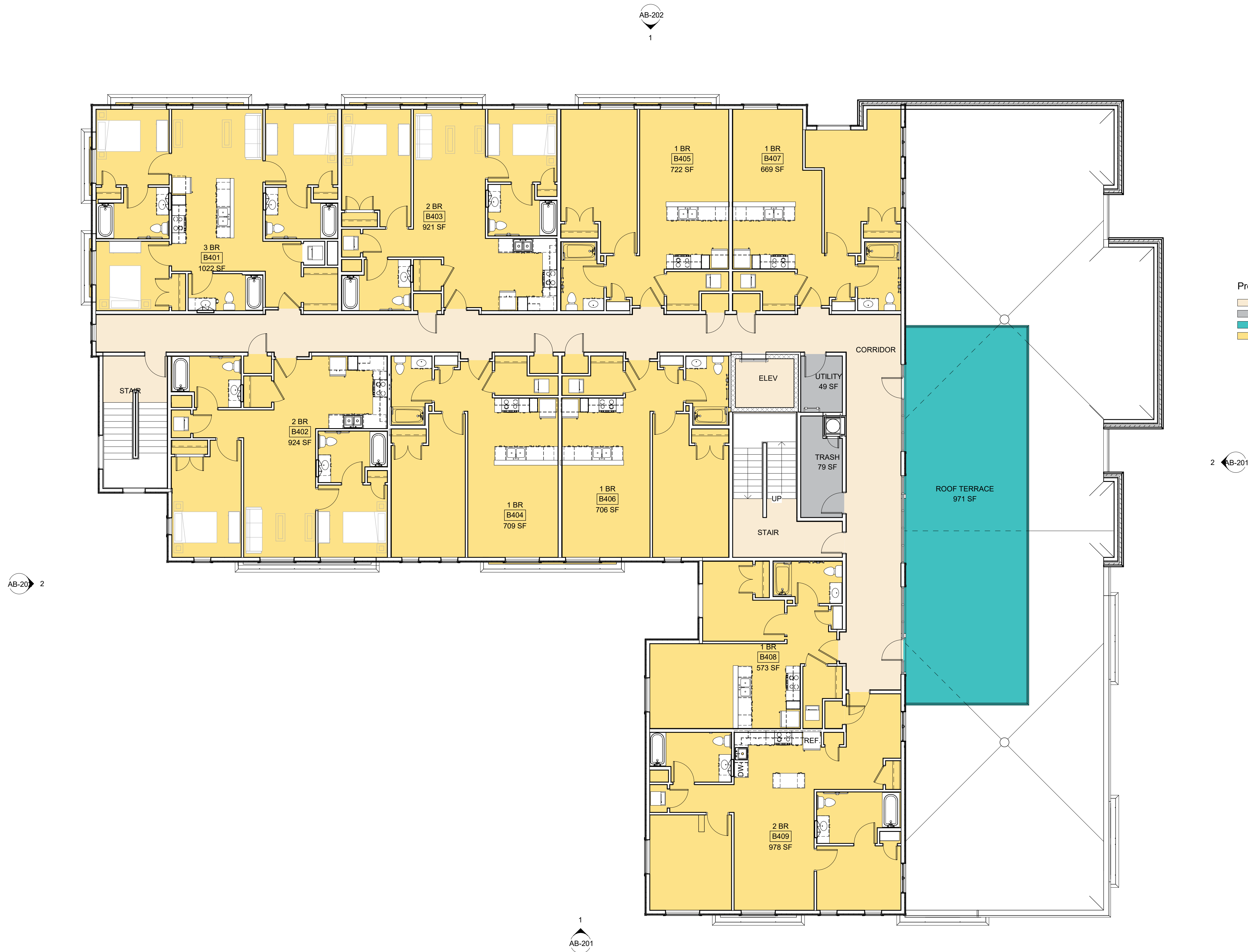
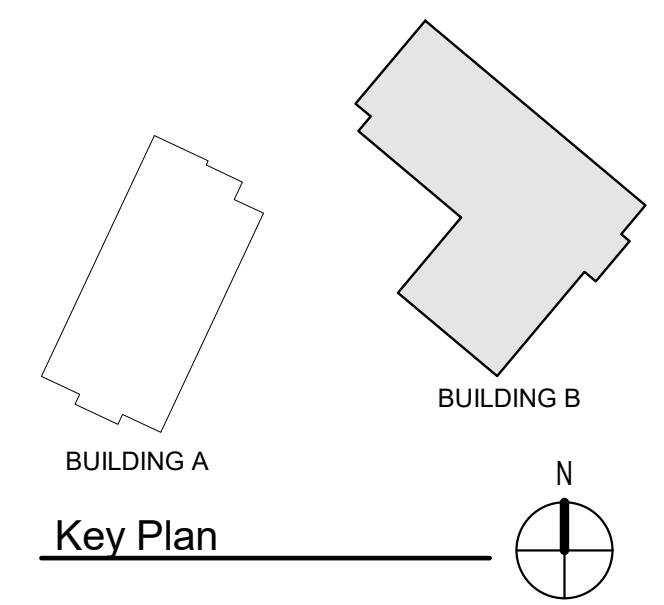
Lofts at Pine Hills
SWBR Project Number 21140.00

Lofts at Pine Hills, LLC
1 Noble Path
Albany, NY 12205

AB-104

BUILDING B - THIRD FLOOR PLAN

2/28/2022
Design Development Set



Program Types Legend

- Circulation
- Support
- Recreation
- Residential

1 04th Floor Plan - Building B
1/8" = 1'-0"

Drawn By: BGD
Checked By: ST
Project Manager: CS

These documents and all the ideas, arrangements, designs and plans indicated thereon or presented thereby are owned by and remain the property of SWBR and no part thereof shall be utilized by any person, firm, or corporation for any purpose whatsoever except with the specific written permission of SWBR. All rights reserved. ©

Revisions

NO.	DESCRIPTION	DATE

Lofts at Pine Hills
SWBR Project Number 21140.00

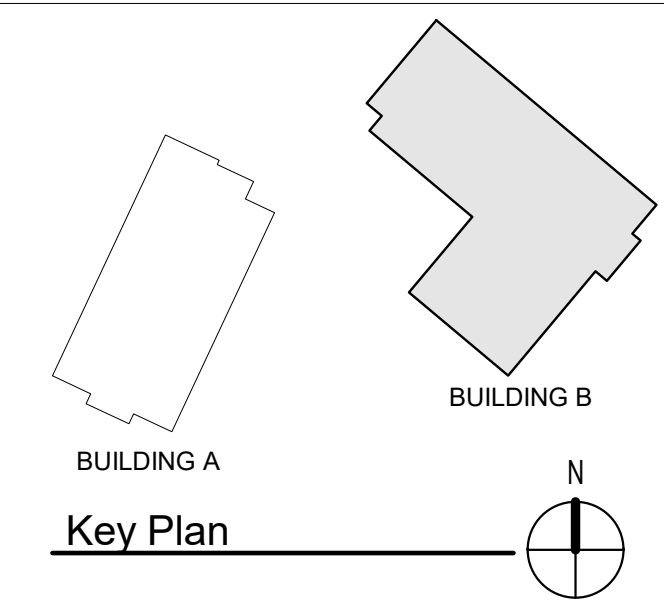
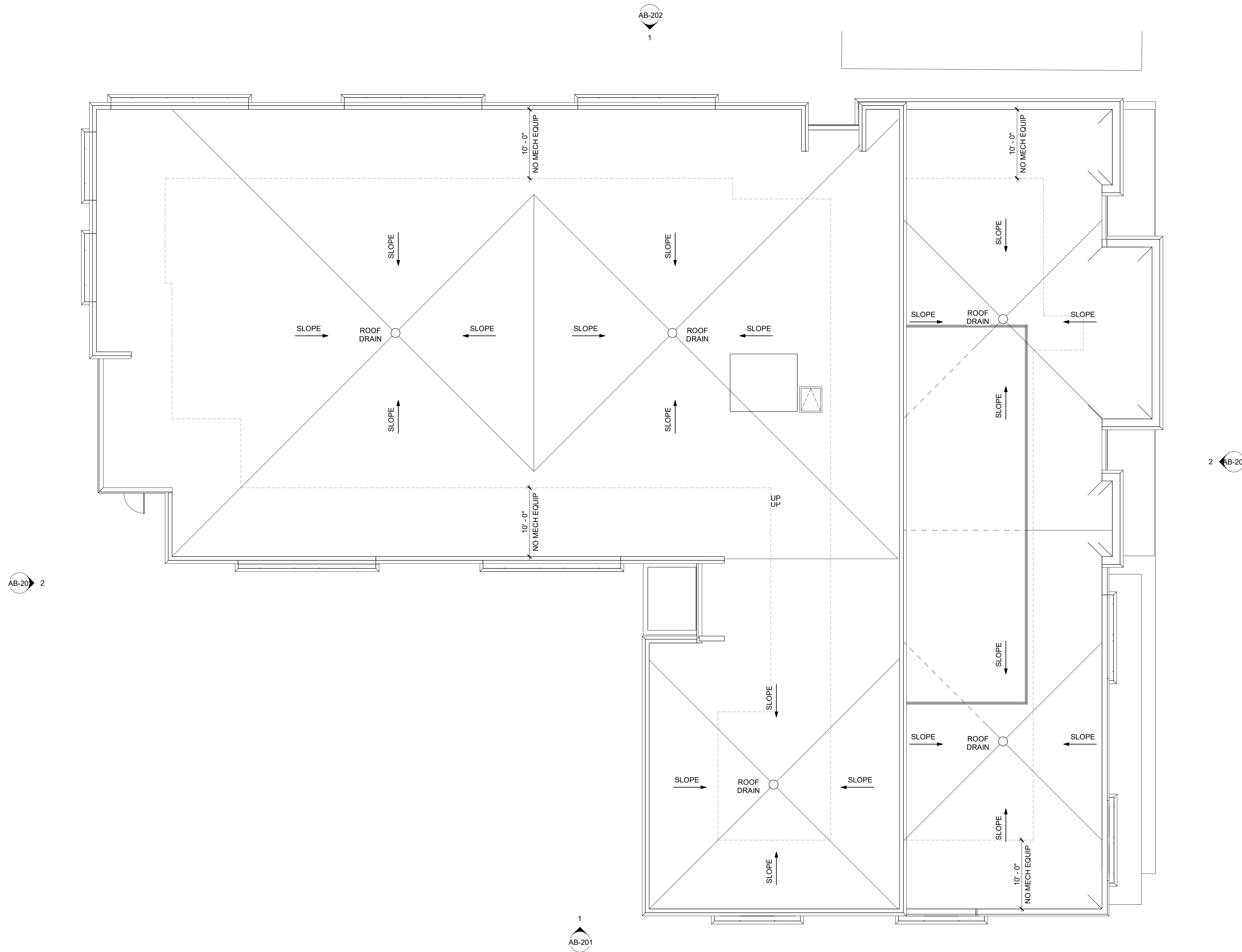
Lofts at Pine Hills, LLC
1 Noble Path
Albany, NY 12205

AB-105

BUILDING B -
FOURTH FLOOR
PLAN

2/28/2022
Design Development Set

1 Roof Plan - Building B
1/8" = 1'-0"



Drawn By: BGD
 Checked By: ST
 Project Manager: CS

These documents and all the ideas, arrangements, designs and plans indicated thereon or presented thereby are owned by and remain the property of SWBR and no part thereof shall be utilized by any person, firm, or corporation for any purpose whatsoever except with the specific written permission of SWBR. All rights reserved. ©

Revisions

Rev	Description

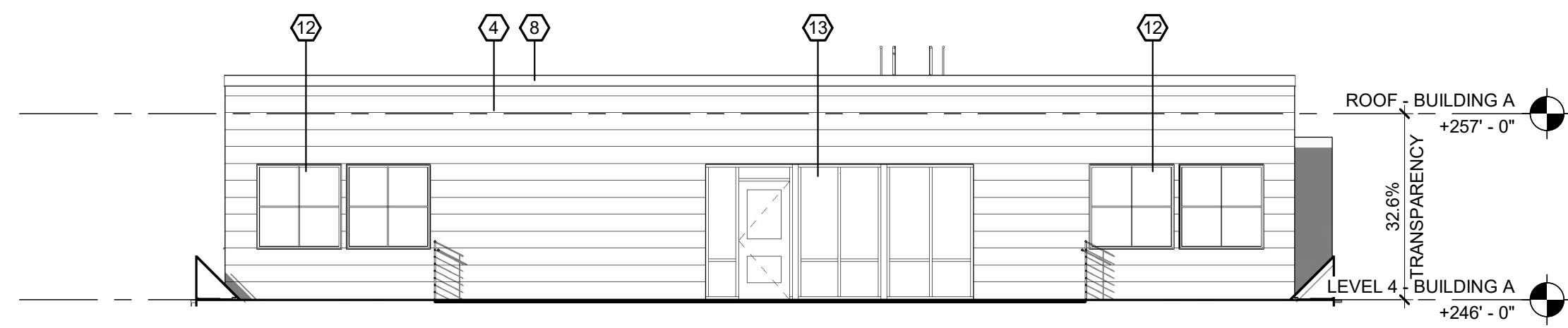
Lofts at Pine Hills
 SWBR Project Number 21140.00

Lofts at Pine Hills, LLC
 1 Noble Path
 Albany, NY 12205

AB-106

BUILDING B - ROOF PLAN

2/28/2022
 Design Development Set



5 South Elevation - Building A Fourth Floor
1/8" = 1'-0"

ELEVATION KEY NOTES		
NO.	DESCRIPTION	SHOWN AS:
1	ARCHITECTURAL CAST STONE MASONRY	
2	CAST STONE MASONRY TRIM	
3	FACE BRICK VENEER, BOD: GLEN GERY	
4	CORRUGATED METAL PANEL SIDING	
5	FIBER CEMENT LAP SIDING, BOD: HARDIE	
6	FIBER CEMENT PANEL SIDING W/ ALUM REVEAL SYSTEM, BOD: HARDIE	
7	FIBER CEMENT PANEL SIDING, BOD: NICHIIA	
8	METAL COPING	

ELEVATION KEY NOTES		
NO.	DESCRIPTION	SHOWN AS:
9	METAL GUARD RAIL	
10		
11	CAST STONE CORNICE	
12	VINYL DOUBLE HUNG WINDOW W/ CLEAR GLASS	
13	ALUM STOREFRONT FRAMING SYSTEM W/ CLEAR GLASS	
14	VINYL FIXED WINDOW W/ CLEAR GLASS	
15	COMPOSITE TRIM	
16	COMPOSITE CORNER TRIM	



4 East Elevation - Building A
1/8" = 1'-0"



3 North Elevation - Building A
1/8" = 1'-0"



2 West Elevation - Building A
1/8" = 1'-0"



1 South Elevation - Building A
1/8" = 1'-0"

Drawn By: BGD
Checked By: ST
Project Manager: CS

These documents and all the ideas, arrangements, designs and plans indicated thereon or presented thereby are owned by and remain the property of SWBR and no part thereof shall be utilized by any person, firm, or corporation for any purpose whatsoever except with the specific written permission of SWBR. All rights reserved. ©

Revisions

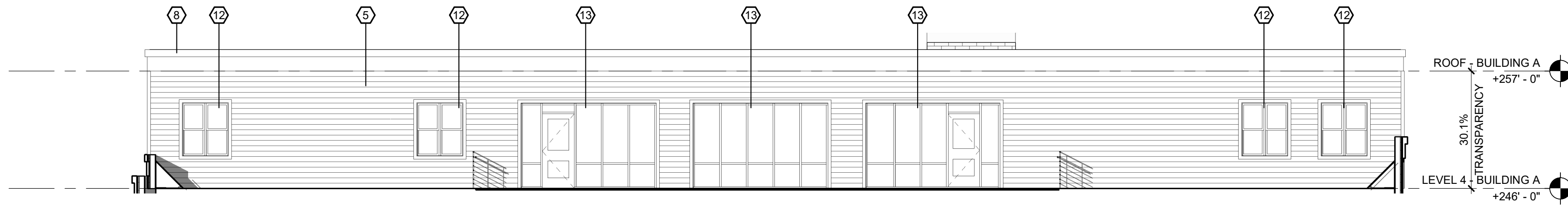
Lofts at Pine Hills
SWBR Project Number 21140.00

Lofts at Pine Hills, LLC
1 Noble Path
Albany, NY 12205

AA-201

BUILDING A -
EXTERIOR
ELEVATIONS

2/28/2022
Design Development Set



3 East Elevation - Building B 4th Floor
1/8" = 1'-0"

ELEVATION KEY NOTES		SHOWN AS:
NO.	DESCRIPTION	☒
1	ARCHITECTURAL CAST STONE MASONRY	
2	CAST STONE MASONRY TRIM	
3	FACE BRICK VENEER, BOD: GLEN GERY	
4	CORRUGATED METAL PANEL SIDING	
5	FIBER CEMENT LAP SIDING, BOD: HARDIE	
6	FIBER CEMENT PANEL SIDING W/ ALUM REVEAL SYSTEM, BOD: HARDIE	
7	FIBER CEMENT PANEL SIDING, BOD: NICHHA	
8	METAL COPING	

ELEVATION KEY NOTES		SHOWN AS:
NO.	DESCRIPTION	☒
9	METAL GUARD RAIL	
10		
11	CAST STONE CORNICE	
12	VINYL DOUBLE HUNG WINDOW W/ CLEAR GLASS	
13	ALUM STOREFRONT FRAMING SYSTEM W/ CLEAR GLASS	
14	VINYL FIXED WINDOW W/ CLEAR GLASS	
15	COMPOSITE TRIM	
16	COMPOSITE CORNER TRIM	



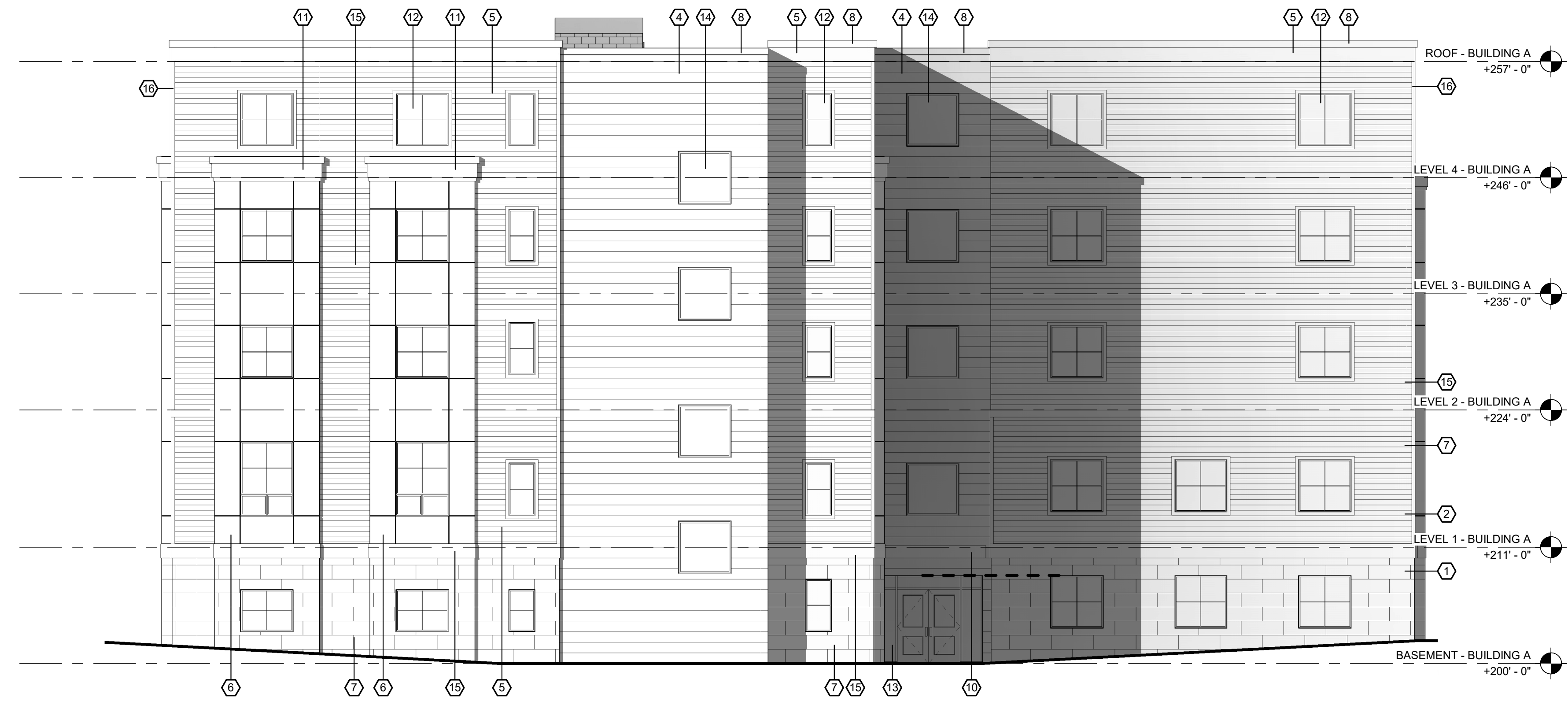
2 East Elevation - Building B
1/8" = 1'-0"



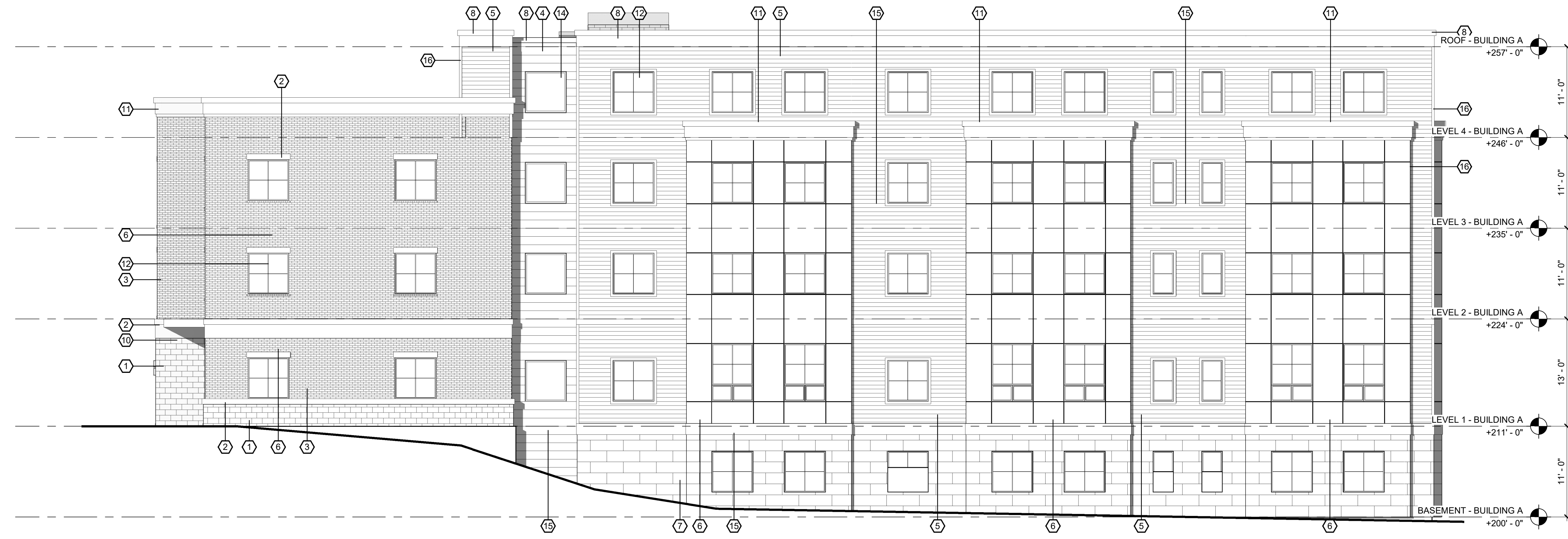
1 South Elevation - Building B
1/8" = 1'-0"

ELEVATION KEY NOTES		SHOWN AS:
NO.	DESCRIPTION	
1	ARCHITECTURAL CAST STONE MASONRY	
2	CAST STONE MASONRY TRIM	
3	FACE BRICK VENEER. BOD: GLEN GERY	
4	CORRUGATED METAL PANEL SIDING	
5	FIBER CEMENT LAP SIDING. BOD: HARDIE	
6	FIBER CEMENT PANEL SIDING W/ ALUM REVEAL SYSTEM. BOD: HARDIE	
7	FIBER CEMENT PANEL SIDING. BOD: NICHHA	
8	METAL COPING	

ELEVATION KEY NOTES		SHOWN AS:
NO.	DESCRIPTION	
9	METAL GUARD RAIL	
10		
11	CAST STONE CORNICE	
12	VINYL DOUBLE HUNG WINDOW W/ CLEAR GLASS	
13	ALUM STOREFRONT FRAMING SYSTEM W/ CLEAR GLASS	
14	VINYL FIXED WINDOW W/ CLEAR GLASS	
15	COMPOSITE TRIM	
16	COMPOSITE CORNER TRIM	



2 West Elevation - Building B
1/8" = 1'-0"



1 North Elevation - Building B
1/8" = 1'-0"

Drawn By: BGD
Checked By: ST
Project Manager: CS

These documents and all the ideas, arrangements, designs and plans indicated thereon or presented thereby are owned by and remain the property of SWBR and no part thereof shall be utilized by any person, firm, or corporation for any purpose whatsoever except with the specific written permission of SWBR. All rights reserved. ©

Revisions

NO.	DESCRIPTION

Lofts at Pine Hills
SWBR Project Number 21140.00

Lofts at Pine Hills, LLC
1 Noble Path
Albany, NY 12205

AB-202

BUILDING B -
EXTERIOR
ELEVATIONS

2/28/2022
Design Development Set