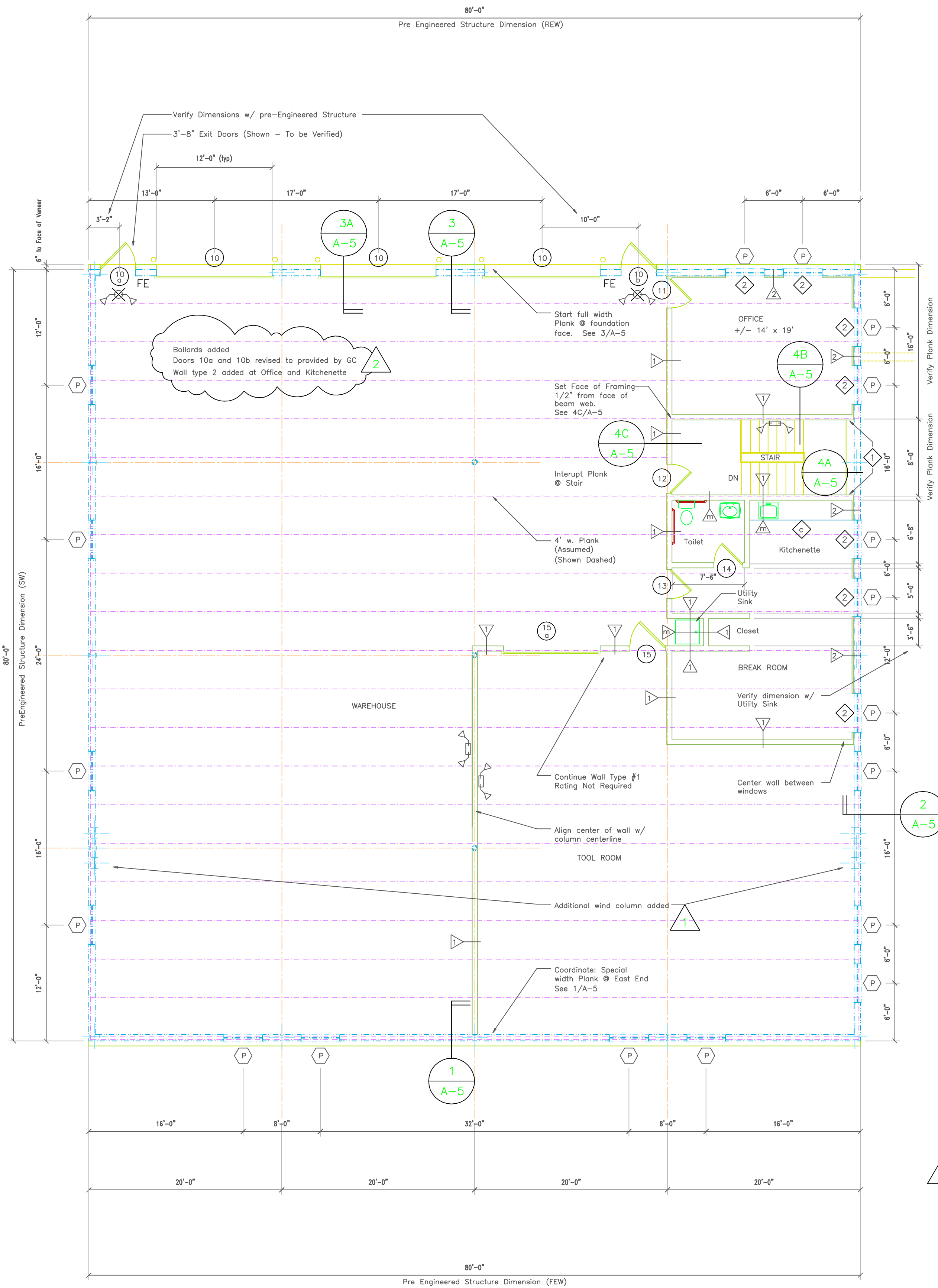


KEYNOTES

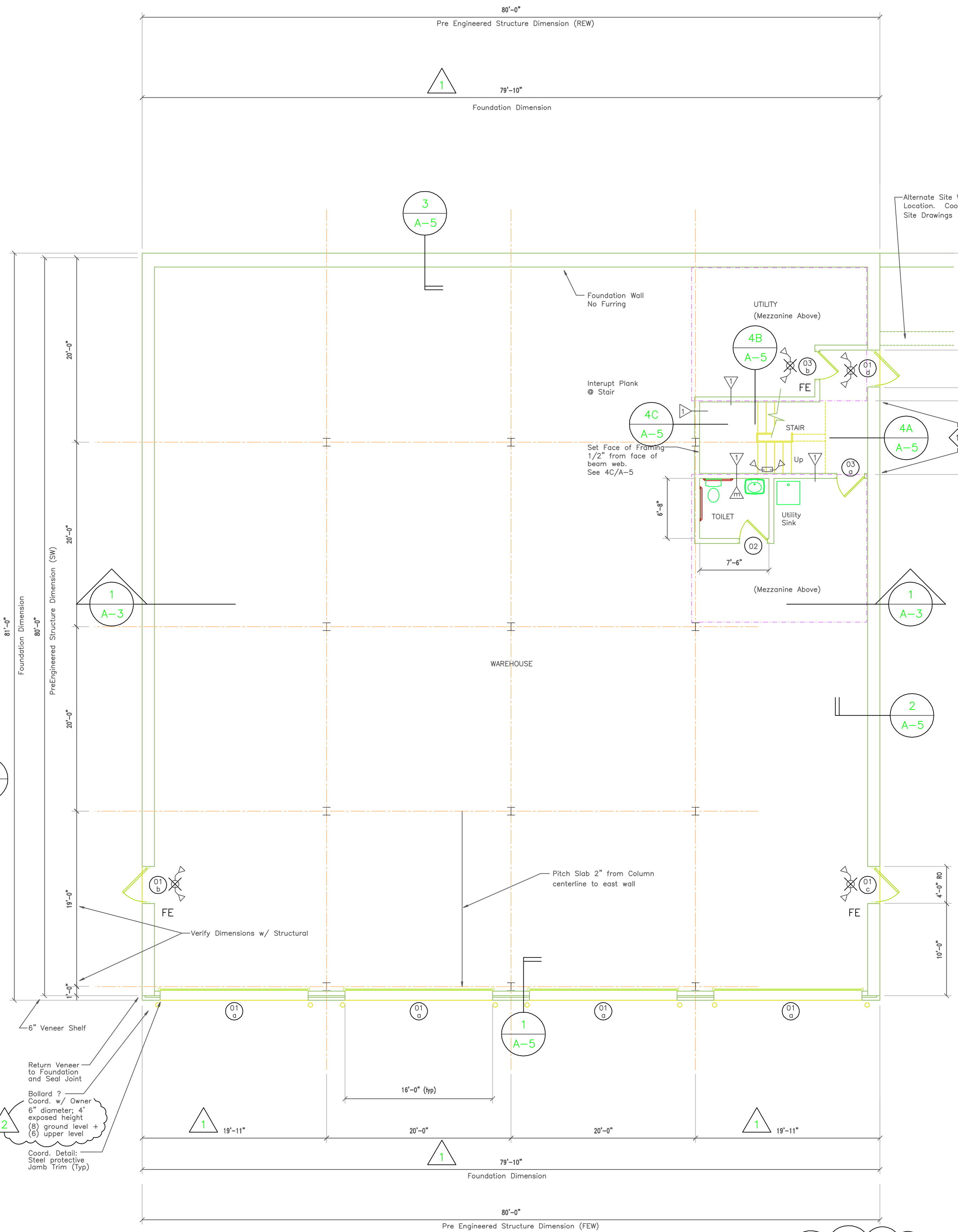
- ◻ Built-in casework. To be coordinated.
- ① Set face of stair wall framing 1/2" from plank edge. See SK-?
- ② See 5/A-5 for window sill detail at windows adjacent to wall type 2 walls.

NOTES

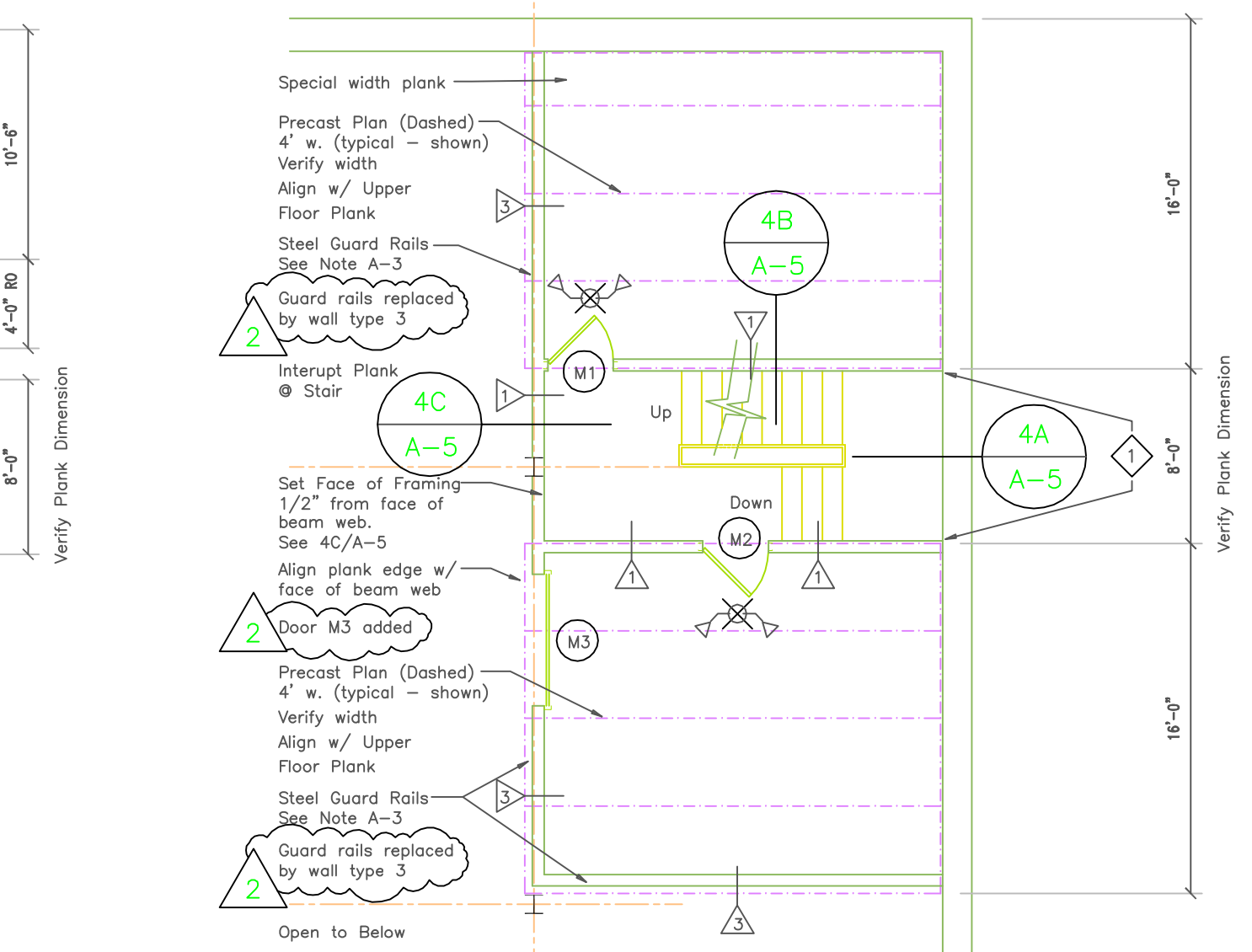
1. The work shown shall be in conformance with all applicable codes and the quality of workmanship shall meet or exceed generally accepted standards of construction.
2. The drawings do not include requirements for construction safety.
3. All dimensions are from finish face of construction to finish face. The Contractor is to verify all dimensions during layout and report any discrepancies to the Architect.
4. The Contractor shall notify the Architect of all proposed substitutions or deviations to the work shown on the drawings and make only those substitutions or deviations acceptable to the Architect.
5. All plumbing, heating, fire protection and electrical work shown is schematic. The Contractor(s) shall be responsible for engineering, all required inspections and compliance with all applicable codes for this work.



FIRST FLOOR PLAN
1/8" = 1'-0"



GROUND FLOOR PLAN
1/8" = 1'-0"



MEZZANINE PLAN
1/8" = 1'-0"

LEGEND

- Pre-Engineered Structure Exterior Wall Construction. See Pre-Engineered Structure Drawings.
- New wall construction:
- TYPICAL WALL - No Mark: 3 5/8" metal studs @ 16" oc. to 4" above adjacent ceiling w/ acoustic batt in cavity and 5/8" gypsum board each exposed side ready for scheduled finishes. Typical unless noted otherwise:
- WALL TYPE #1: 1 hour rated, UL# ???: 3 5/8" metal studs @ 16" oc. to underside of roof deck w/ expandable top track. Fire seal juncture to deck flutes and roof beams. Taped 5/8" type 'x' gypsum board each side. Thermal batt with vapor barrier in cavity.
- WALL TYPE *: Similar to typical except no acoustic batt in cavity.
- WALL TYPE m: Similar to typical except provide moisture resistant type gypsum board.
- WALL TYPE f: Furred wall on concrete foundation: 2" metal furring channels @ 16" oc. with metal siding on interior side, w/ rigid insulation and vapor barrier in cavity. FURRED WALLS ELIMINATED
- WALL TYPE 2: 2" metal studs @ 16" oc along inside face of pre-engineered wall to underside of roof deck w/ expandable top track and taped 5/8" gypsum board on room side.
- WALL TYPE 3: Similar to Wall Type 1 except no rating required. Partition from mezzanine plank to underside of plank or beam above.
- New door. See schedule for requirements.
- Align finish faces of indicated construction.
- FE Fire Extinguisher; Surface mounted or in wall cabinet. Coord w/ owner.
- Exit sign. Connect to battery back-up.
- Emergency light locations. Connect to battery backup.
- Combination Exit Sign and Emergency Light. Connect to battery back-up.

MICHAEL ARCHITECTURAL SERVICES, PC
Troy, New York 12180 (518) 273-5120
297 River Street - Suite 311

Services to: BCI Construction, Inc.
20 Loudonville Road
Albany, New York
518 - 426-3200

Expansion of: BCI Construction Inc.
20 Loudonville Road
Albany, New York

MA # 06-002 (?)

1/05/2007 - ISSUED FOR PERMIT

SHEET TITLE:
FLOOR PLANS

DATE:
January 5, 2007

REVISIONS:
① March 27, 2007
② April 17, 2007

SHEET:
A-1