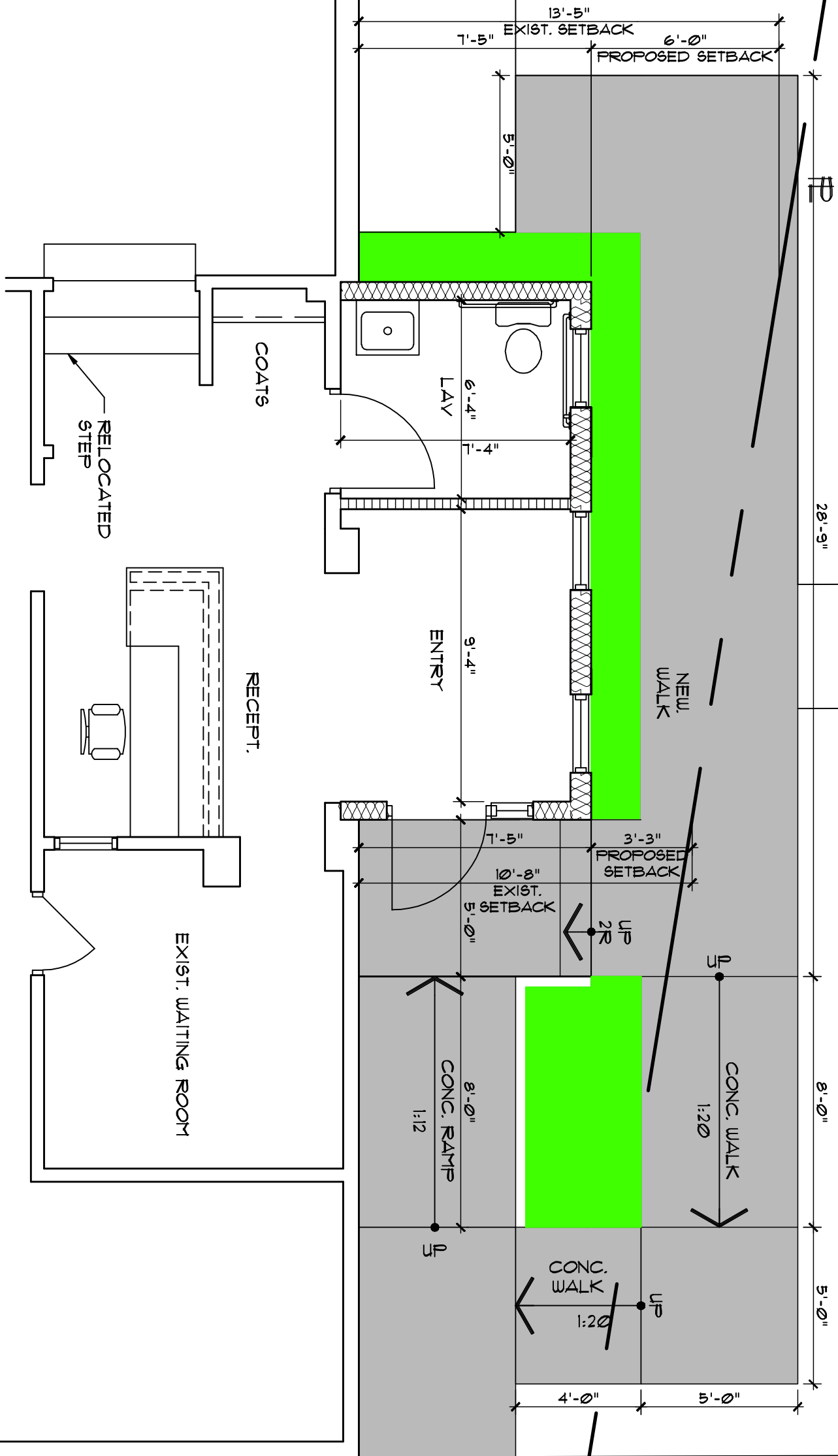


**PROPOSED ENTRY ADDITION**  
SCALE: 1/4" = 1'-0"



**HARRIS A. SANDERS ARCHITECTS, P.C.**  
252 WASHINGTON AVENUE, ALBANY, NEW YORK 12210

**DRS. LIPNICK & GIGLIO DENTAL OFFICE**  
822 NEW SCOTLAND AVENUE  
ALBANY, NEW YORK

**PROPOSED ENTRY ADDITION**

DATE: 05/24/18  
DESIGNED BY:  
DRAWN BY:  
CHECKED BY:  
SCALE: AS NOTED  
NOTES:

S1a

