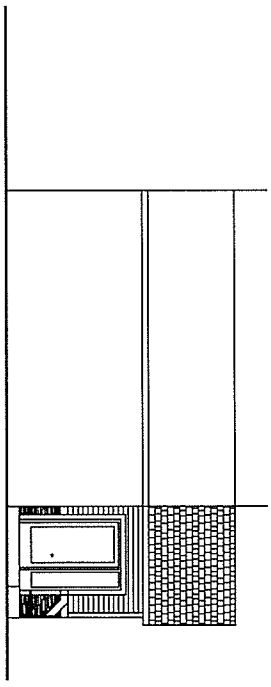


FRONT ELEVATION
SCALE: 1/8" = 1'-0"



SIDE ELEVATION
SCALE: 1/8" = 1'-0"

| | | | | |
|------------|--|---|------------------------------------|---|
| <p>S1a</p> | | <p>HARRIS A. SANDERS ARCHITECTS, P.C. 252 WASHINGTON AVENUE, ALBANY, NEW YORK 12210</p> | <p>PROPOSED ENTRY ADDITION</p> | <p>DATE: 05/24/18 DESIGNED BY: DRAWN BY: CHECKED BY: SCALE: AS NOTED NOTES:</p> |
| | | <p>DRS. LIPNICK & GIGLIO DENTAL OFFICE 822 NEW SCOTLAND AVENUE ALBANY, NEW YORK</p> | | |