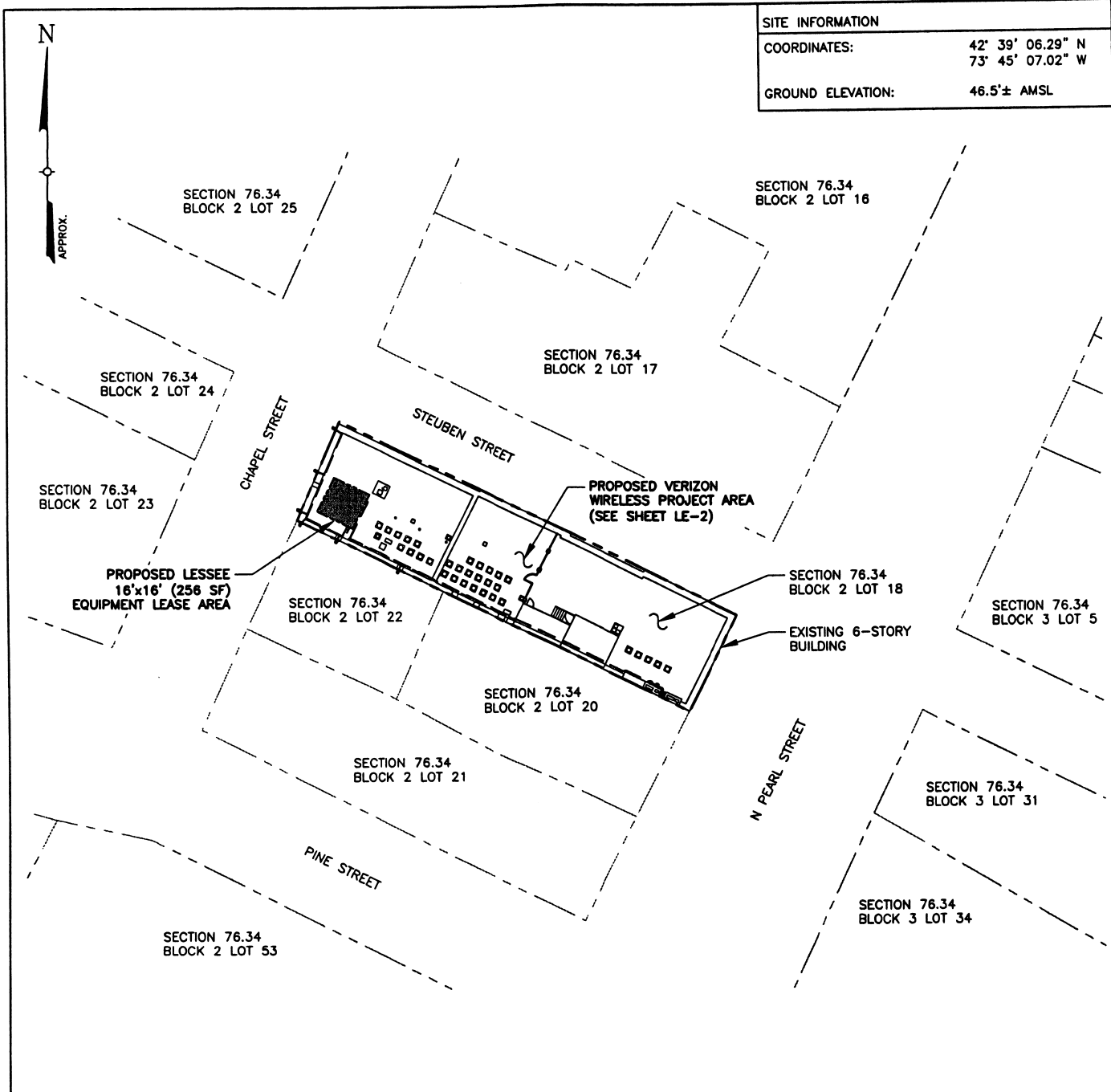


SITE INFORMATION	
COORDINATES:	42° 39' 06.29" N 73° 45' 07.02" W
GROUND ELEVATION:	46.5'± AMSL



**NOTE**

1. THIS DRAWING IS FOR OPTION, LEASE, LICENSE AND PERMITTING PURPOSES ONLY AND IS NOT TO BE USED FOR CONSTRUCTION.
2. FINAL UTILITY EASEMENT LOCATION WILL BE DETERMINED BY THE UTILITY COMPANY.

**1**  
LE-1 **OVERALL SITE PLAN**  
SCALE: 1" = 60'



**TECTONIC**

*Practical Solutions, Exceptional Service*  
TECTONIC Engineering & Surveying Consultants P.C.  
36 British American Blvd.  
Suite 101 Latham, NY 12110 Phone: (518) 783-1630  
(800) 829-6531  
www.tectonicengineering.com

ALBANY DT – LEASE EXHIBIT

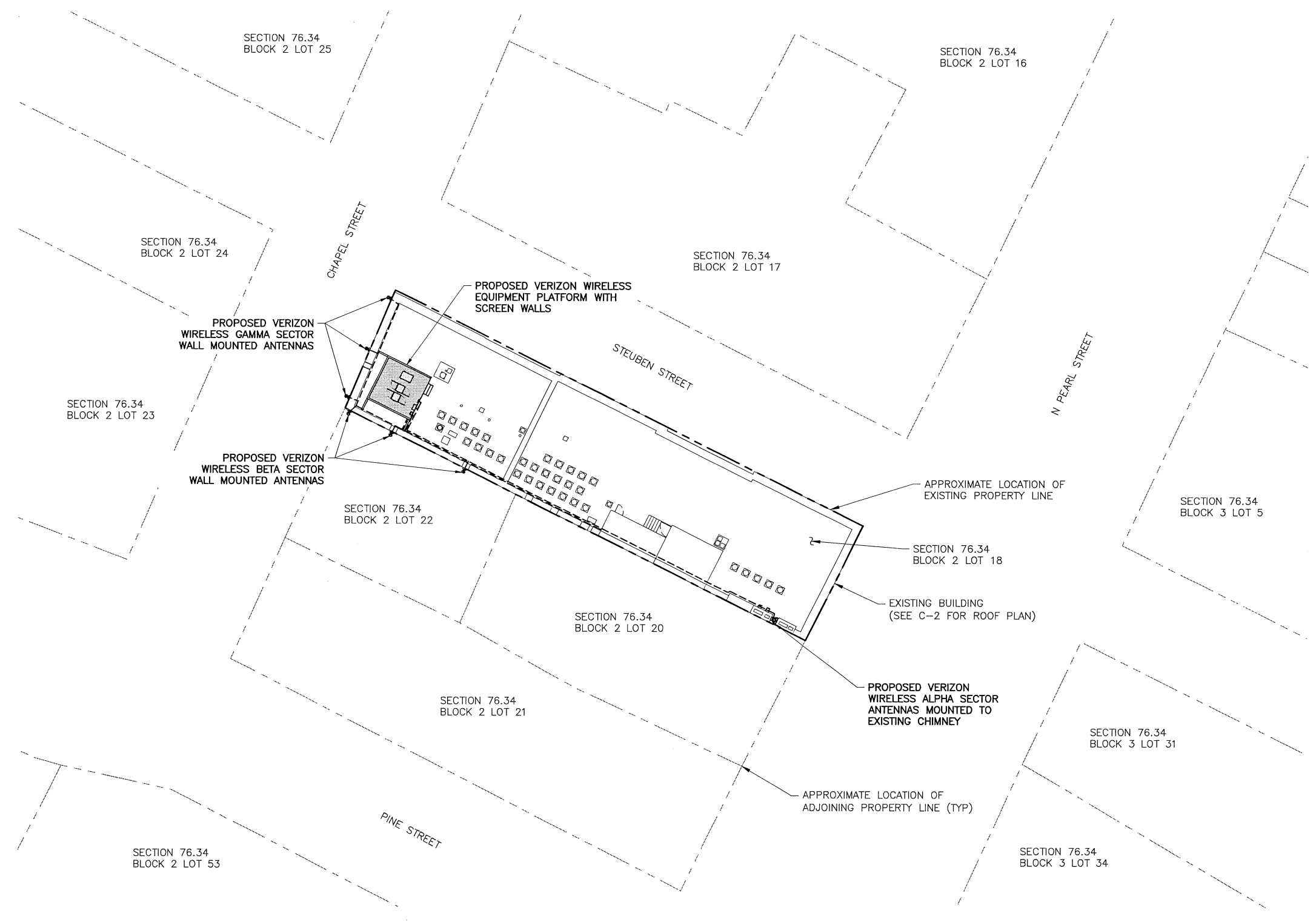
PROJECT # 20131016226 – LOCATION CODE # 287615

58 NORTH PEARL ST – CITY OF ALBANY – ALBANY COUNTY, NY 12207

CELLCO PARTNERSHIP  
(LESSEE)

1275 JOHN STREET, SUITE 100, WEST HENRIETTA, NY 14586

**NORTH ORIENTATION**  
 1. NORTH ORIENTATION ESTABLISHED BY COMPASS OBSERVATION.



**OVERALL SITE PLAN**  
 SCALE: 1" = 40' (11x17 SIZE)  
 1" = 20' (22x34 SIZE)

- CONTRACTOR SHALL NOTIFY UNDERGROUND FACILITIES PROTECTIVE ORGANIZATION AT TELEPHONE NUMBER 1-800-962-7962 PRIOR TO EXCAVATION AT SITE.
- CONTRACTOR TO LOCATE AND VERIFY ALL EXISTING UNDERGROUND UTILITIES PRIOR TO EXCAVATION.
- ALL EXCAVATION WORK WITHIN 36" OF EITHER SIDE OF UNDERGROUND UTILITIES MUST BE DONE BY HAND EXCAVATION METHODS.



1275 JOHN STREET, SUITE 100  
 WEST HENRIETTA, NY 14586

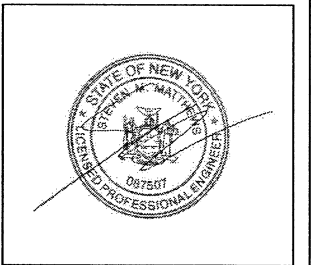


Practical Solutions, Exceptional Service  
 TECTONIC Engineering & Surveying Consultants P.C.  
 36 British American Blvd.  
 Suite 101 Latham, NY 12110 Phone: (518) 783-1830  
 (800) 829-8531  
 www.tectonicengineering.com

WORK ORDER NUMBER 7072.107 DRAWN BY TRR

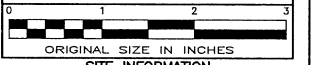
NO.	DATE	ISSUE
0	6/24/16	FOR COMMENT
1	6/28/16	FOR ZONING
2	10/20/16	REVISED ANTENNA DESIGN
3	2/6/17	PER COMMENTS
4	7/25/17	PER COMMENTS

RELEASED BY DATE



UNAUTHORIZED ALTERATION OR ADDITIONS TO A PLAN BEARING THE SEAL OF A LICENSED ENGINEER OR LAND SURVEYOR IS A VIOLATION OF SECTION 7209 SUBDIVISION 2 OF THE NEW YORK STATE EDUCATION LAW.

COPIES OF THIS DOCUMENT WITHOUT A FACSIMILE OF THE SIGNATURE AND AN ORIGINAL EMBOSSED SEAL OR ORIGINAL STAMP IN BLUE OR RED INK OF THE PROFESSIONAL ENGINEER OR LAND SURVEYOR SHALL NOT BE CONSIDERED VALID COPIES.



ORIGINAL SIZE IN INCHES

**SITE INFORMATION**  
 ALBANY DT  
 PN: 20131016226  
 LC: 287615  
 SITE ADDRESS

58 NORTH PEARL ST  
 CITY OF ALBANY  
 ALBANY COUNTY  
 NY 12207

**SHEET TITLE**  
 OVERALL SITE PLAN

**SHEET NUMBER**  
 C-1