

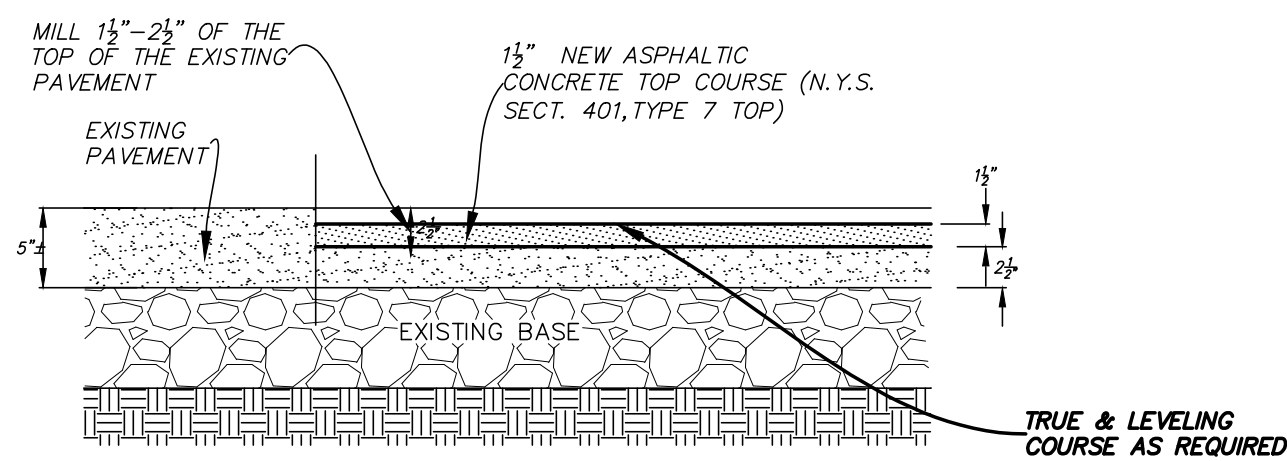
LEGEND

R.O.W.	RIGHT OF WAY	○	IRON ROD
No.	NUMBER	○	MANHOLE
enc.	ENCROACHMENT	▣	CATCHBASIN
		—	SIGN
P.O.B.	POINT OF BEGINNING	—	FENCE LINE
S.F.	SQUARE FEET	—	OVERHEAD WIRE, UTILITY POLE & GUY WIRE
N/F	NOW OR FORMERLY	—	TRAFFIC FLOW ACCESS AREA
N	NORTH	↔	WATER SHUT OFF
S	SOUTH	↕	WATER VALVE
E	EAST	↗	HYDRANT
W	WEST	↖	GAS VALVE
L	LIBER	☆	LIGHT POLE
P.	PAGE		
		▣	CONCRETE
		▣	PAVEMENT

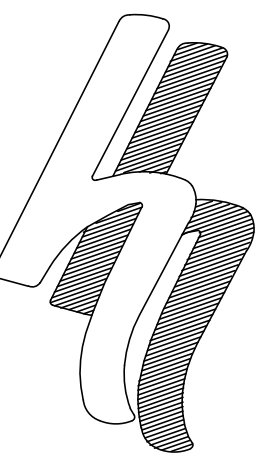
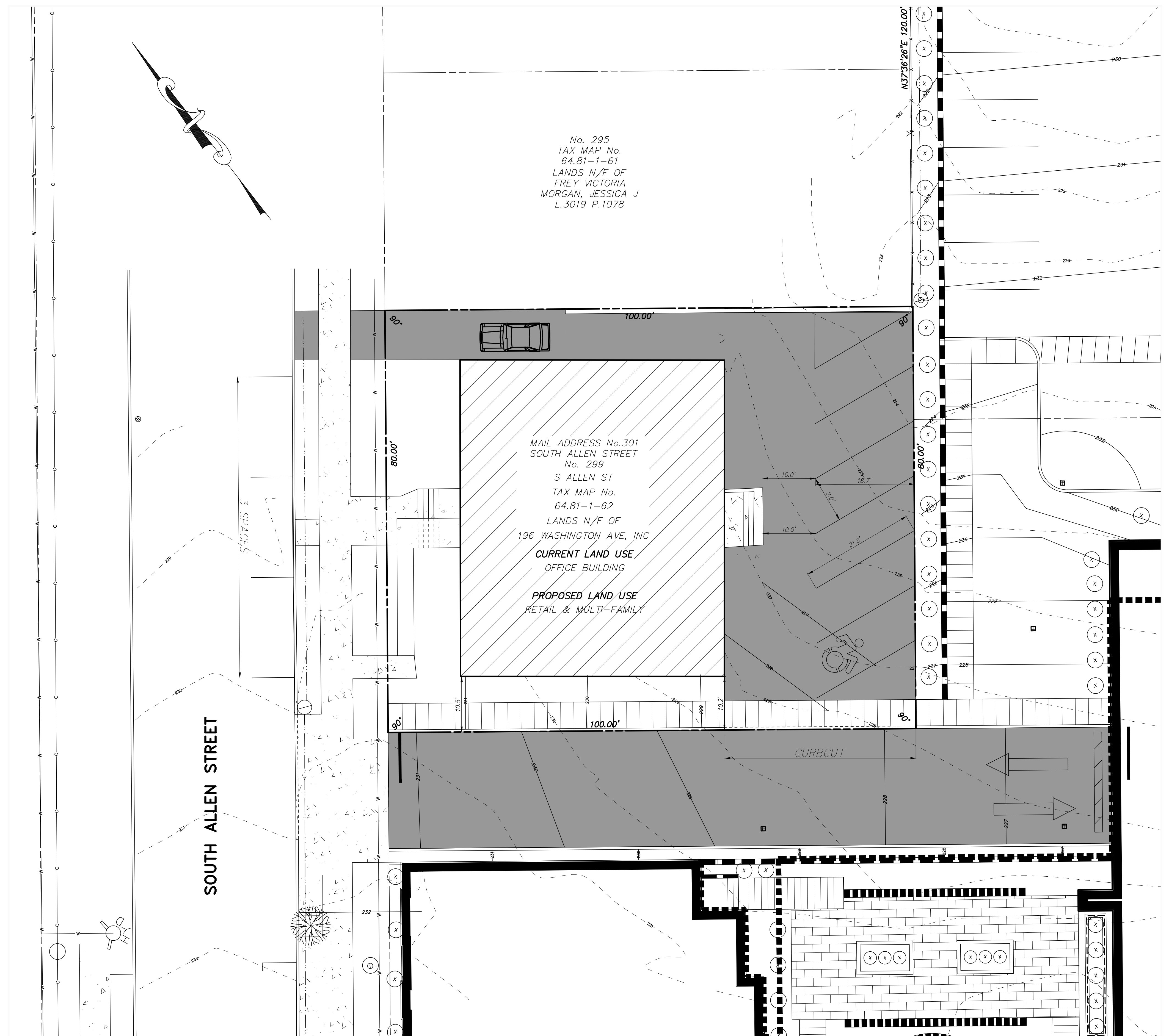
TOTAL SITE COVERAGE STATISTICS

description	s.f.	acres	%
building area	3,000	0.07	37.5
green area	1,401	0.03	17.5
paved/conc area	3,599	0.08	45.0
total area	8,000	0.18	100.00

ON STREET PARKING=3
 OFF STREET PARKING=7
 TOTAL PARKING SPACES=10

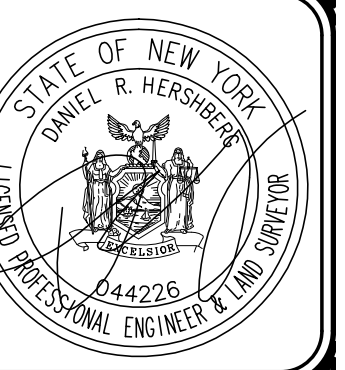


MILLING AND NEW TOP COURSE DETAIL
 NOT TO SCALE



HERSHBERG & HERSHBERG
 Consulting Engineers and Land Surveyors
 18 Locust Street
 Albany, New York 12203

ALTERATION OF THIS DOCUMENT EXCEPT BY A LICENSED PROFESSIONAL ENGINEER OR LAND SURVEYOR, IS ILLEGAL



DATE	REVISIONS
1-6-2020	PARKING REVISED
1-15-2020	PARKING REVISED

SITE PLAN
299 SOUTH ALLEN STREET
ALBANY NEW YORK

SCALE: 1"=10'
 FILE: 2018-0257
 DATE: 12-16-2019
 CHK: DRH
 BY: SMC
 180257-1.DWG